



## Legislation Details (With Text)

<b>File #:</b>	2021-0023		
<b>Type:</b>	Consent Calendar Item	<b>Status:</b>	Agenda Ready
<b>File created:</b>	1/11/2021	<b>In control:</b>	Agricultural Commissioner
<b>On agenda:</b>	3/2/2021	<b>Final action:</b>	
<b>Title:</b>	California Department of Food and Agriculture 2021 Noxious Weed Program		
<b>Sponsors:</b>	Agricultural Commissioner, Regional Parks		
<b>Indexes:</b>			
<b>Attachments:</b>	1. 2021-0023_CDFA 2021 Noxious Weed Program_Summary Report_ADA.pdf, 2. 2021-0023_CDFA 2021 Noxious Weed Program_Att 1_CDFA Contract_ADA.pdf		

Date	Ver.	Action By	Action	Result
------	------	-----------	--------	--------

**To:** Sonoma County Board of Supervisors

**Department or Agency Name(s):** Agriculture/Weights & Measures, Regional Parks

**Staff Name and Phone Number:** Sue Ostrom, 565-3836; Hattie Brown, 565-3220

**Vote Requirement:** Majority

**Supervisory District(s):** Countywide

**Title:**

California Department of Food and Agriculture 2021 Noxious Weed Program

**Recommended Action:**

Authorize the Agricultural Commissioner to execute an agreement with the California Department of Food and Agriculture to control and eradicate noxious and invasive weeds from being established in California and support local and regional eradication of high priority noxious and invasive weeds for the period of January 15, 2021 through June 30, 2022.

**Executive Summary:**

The recommended action will allow the County Agricultural Commissioner to execute the agreement with the California Department of Food and Agriculture (CDFA) and receive \$32,000 in funding from the State for the work performed on behalf of CDFA from January 15, 2021 through June 30, 2022. This work is to control noxious and invasive weeds from being established in California and supports local and regional eradication of high priority noxious and invasive weeds as defined in the Food and Agricultural Code Section 7271, 7272 through 7272.5.

**Discussion:**

In 2018, the Sonoma County Agricultural Commissioner in partnership with the Marin Sonoma Weed Management Area and Sonoma County Regional Parks launched an early detection and rapid response program to map and control invasive weeds throughout Sonoma County park lands. Parks staff established a priority list of 31 established invasive and 24 emergent invasive weeds, adopted mobile mapping technology developed by Calfora, and commenced mapping and treating priority weeds across 58 parks, trails, and facilities and over 12,000 acres of public land throughout Sonoma County.

Pre- and post- mapping of parklands that experienced catastrophic wildfire in 2017 and 2019 showed the tremendous need to rapidly respond to emerging invasives in recently burned lands. Parks staff will continue to map and treat priority weeds such as stinkwort, broom species, and tree of heaven and other priority emergent and invasive species using early detection rapid response survey methods. Staff will report on efforts through data published online by Calfora, an annual integrated vegetation management report, and in a public presentation to the Sonoma County Parks and Recreation Commission.

**Location(s):** Priority weed mapping and treatment will be limited to Sonoma County Regional Park lands with a focus on priority emergent and invasive weeds and lands that recently experienced fire including: Foothill, Sonoma Valley, Hood Mountain, Crane Creek, Schopflin Fields, Tolay Lake, Mark West, and Shiloh Ranch Regional Parks.

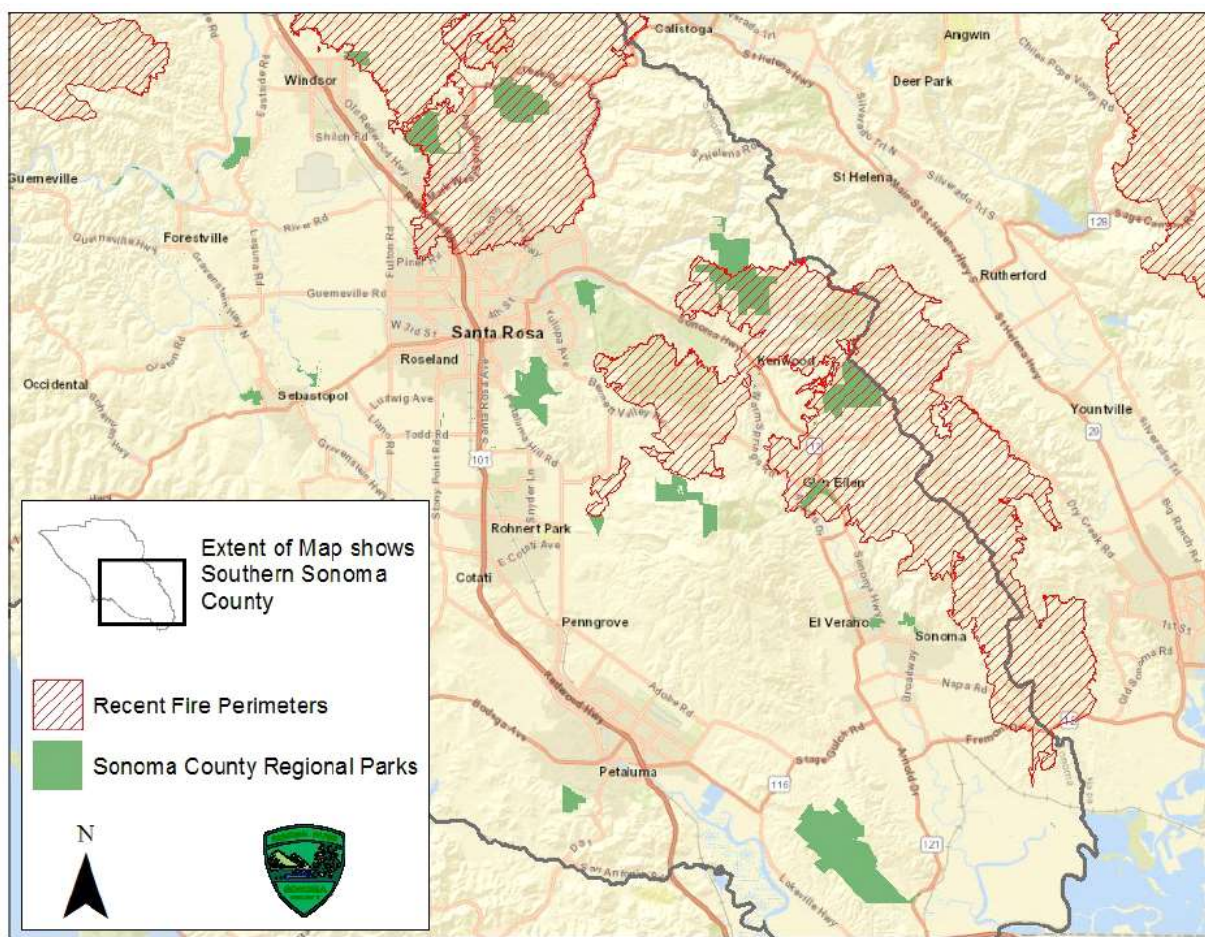


Figure 1. Map shows Sonoma County Regional Parks (green) including parks recently impacted by fire (red).

Project goals and objectives include increasing the profitability and value of crop land and rangeland; decreasing the costs of roadside, park, and waterway maintenance; reducing the fire hazard and fire control costs in the state; protecting the biodiversity of native ecosystems; maintaining the recreational and aesthetic value of open space, recreational, and public areas; and increasing water supply and flow.

**Weed Species to be Controlled:**

Stinkwort (*Dittrichia graveolens*) is currently one of the most rapidly spreading invasive plants throughout the state of California. While once thought to be primarily a roadside/parking lot weed, it is moving into wildlands and is a pernicious fire-follower.

Spanish (*Spartium junceum*), Scotch (*Cytisus scoparius*), and French (*Genista monspessulana*) broom species are problematic established invasives in Sonoma County. Landscapes that burned in the 2017 Tubbs and Nuns fires, the 2019 Kincadee fires, and the 2020 LNU Lightning Complex fires have or likely will have huge explosions of broom which are both the result of fire but will become ladder fuels for subsequent fires.

Tree of Heaven (*Ailanthus altissima*) is an established, high priority weed in Sonoma County because it serves as a host plant for spotted lanternfly - a pest with great potential to impact viticulture.

All of these species are on the § 4500 list of noxious weeds. All are listed as highly or moderately invasive by the California Invasive Plant Council meaning they have a severe or substantial impact on ecological processes.

**Weed Removal/Control Techniques(s):**

Stinkwort - Primarily hand removal.

Broom sp. - Primarily hand removal when small; mechanical removal when stem becomes woody.

Tree of Heaven - Primarily hand removal when small.

All control techniques will adhere to Sonoma County Resolution #19-0226 prohibiting pesticide use in sensitive areas and for routine maintenance. Chemical treatment may not be determined necessary. If needed, chemical treatment will strictly adhere to Regional Parks Integrated Pest Management (IPM) Plan. No synthetic chemicals will be used in or near playgrounds, campgrounds, parking lots, plazas, or other areas where people or pets gather. Use of synthetic herbicides by Regional Parks is at an historic low with most weed-control efforts achieved via hand crews and grazing. Any use will be reported to the Agricultural Commissioner and the State of California.

**Prior Board Actions:**

N/A

**FISCAL SUMMARY**

<b>Expenditures</b>	<b>FY 20-21 Adopted</b>	<b>FY21-22 Projected</b>	<b>FY 22-23 Projected</b>
Budgeted Expenses	\$10,000	\$22,000	
Additional Appropriation Requested			
<b>Total Expenditures</b>	<b>\$10,000</b>	<b>\$22,000</b>	
<b>Funding Sources</b>			
General Fund/WA GF			
State/Federal	\$10,000	\$22,000	
Fees/Other			

Use of Fund Balance			
Contingencies			
<b>Total Sources</b>	<b>\$10,000</b>	<b>\$22,000</b>	

**Narrative Explanation of Fiscal Impacts:**

Approximately 1/3 of the CDFA contract funding (\$10,000) will be used during the remainder of the current fiscal year, and the remaining \$22,000 will be billed in FY 21-22.

<b>Staffing Impacts:</b>			
<b>Position Title (Payroll Classification)</b>	<b>Monthly Salary Range (A-I Step)</b>	<b>Additions (Number)</b>	<b>Deletions (Number)</b>
N/A			

**Narrative Explanation of Staffing Impacts (If Required):**

N/A

**Attachments:**

California Department of Food and Agriculture Contract

**Related Items "On File" with the Clerk of the Board:**