



# COVID-19 Emergency Response Strategy Update

**October 19, 2021**

**Tina Rivera**

Interim Director

Sonoma County Department of Health Services

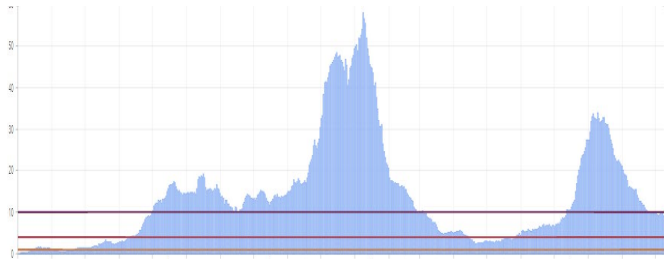
**Dr. Sundari Mase**

Sonoma County Health Officer

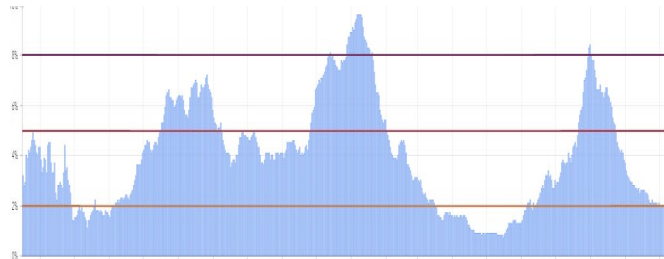


**sonoma county**  
DEPARTMENT OF HEALTH SERVICES

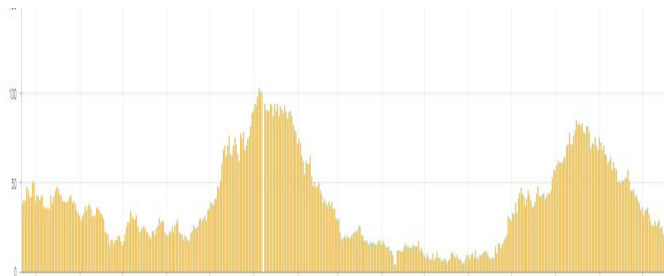
# Overall Countywide Trends



New cases per 100,000 residents per day



Overall test positivity



COVID-19 hospitalizations

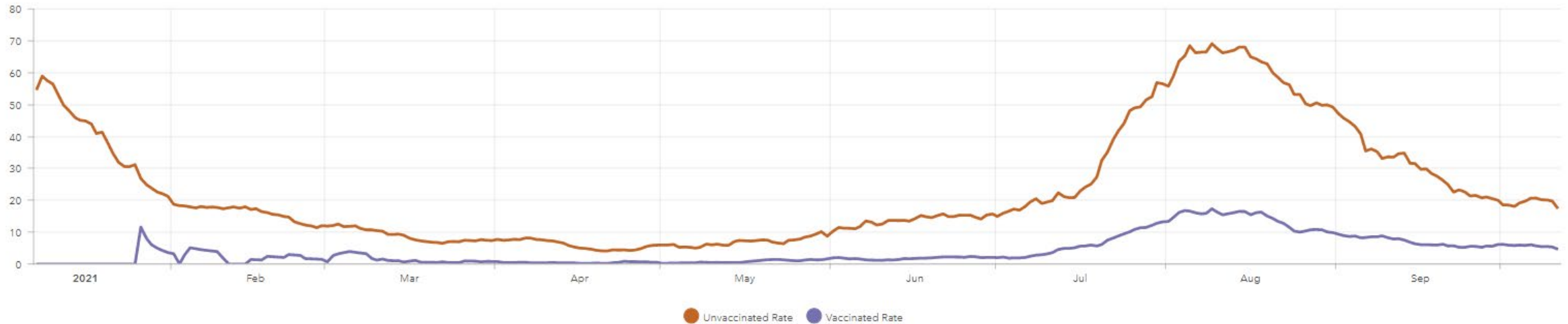


Lowest HPI test positivity

- **Metrics as of 10/18/21:**
  - **9** new cases per 100,000 residents per day
  - **2%** overall test positivity
  - **2%** test positivity in lowest HPI quartile
- COVID-19 hospitalizations starting to decline (**19** currently hospitalized)
- **83** people have died from COVID-19 since July 1st

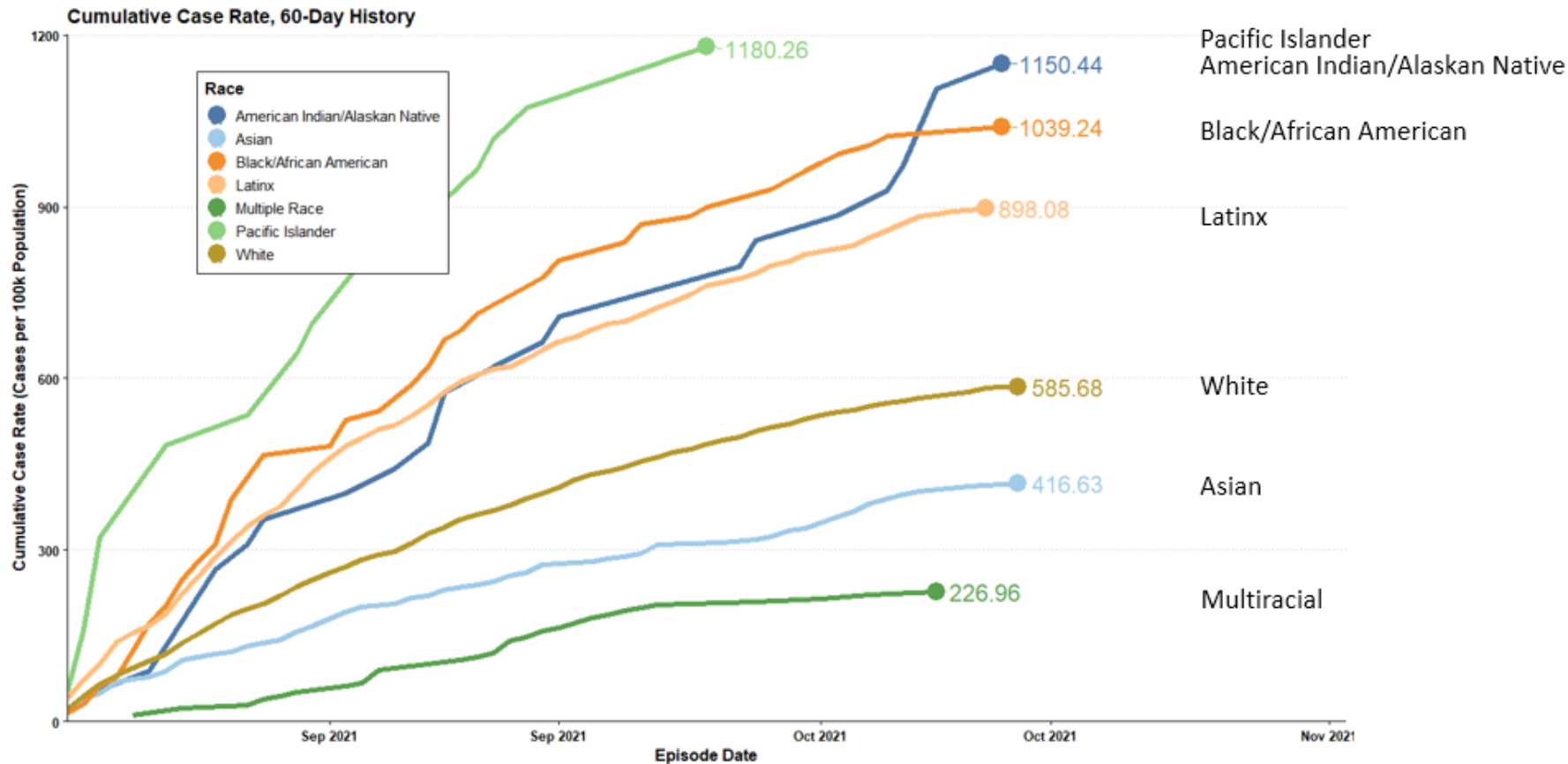
# Sonoma County Case Rate by Vaccination Status (10/18)

New Cases per Day per 100,000 Residents, by Vaccination Status (7 day average, 7 day lag)



- Unvaccinated population: **17.4** new cases per 100,000 per day
- Fully Vaccinated population: **4.6** new cases per 100,000 per day

# Case Rate Trends by Racial/Ethnic Group, Past 60 Days

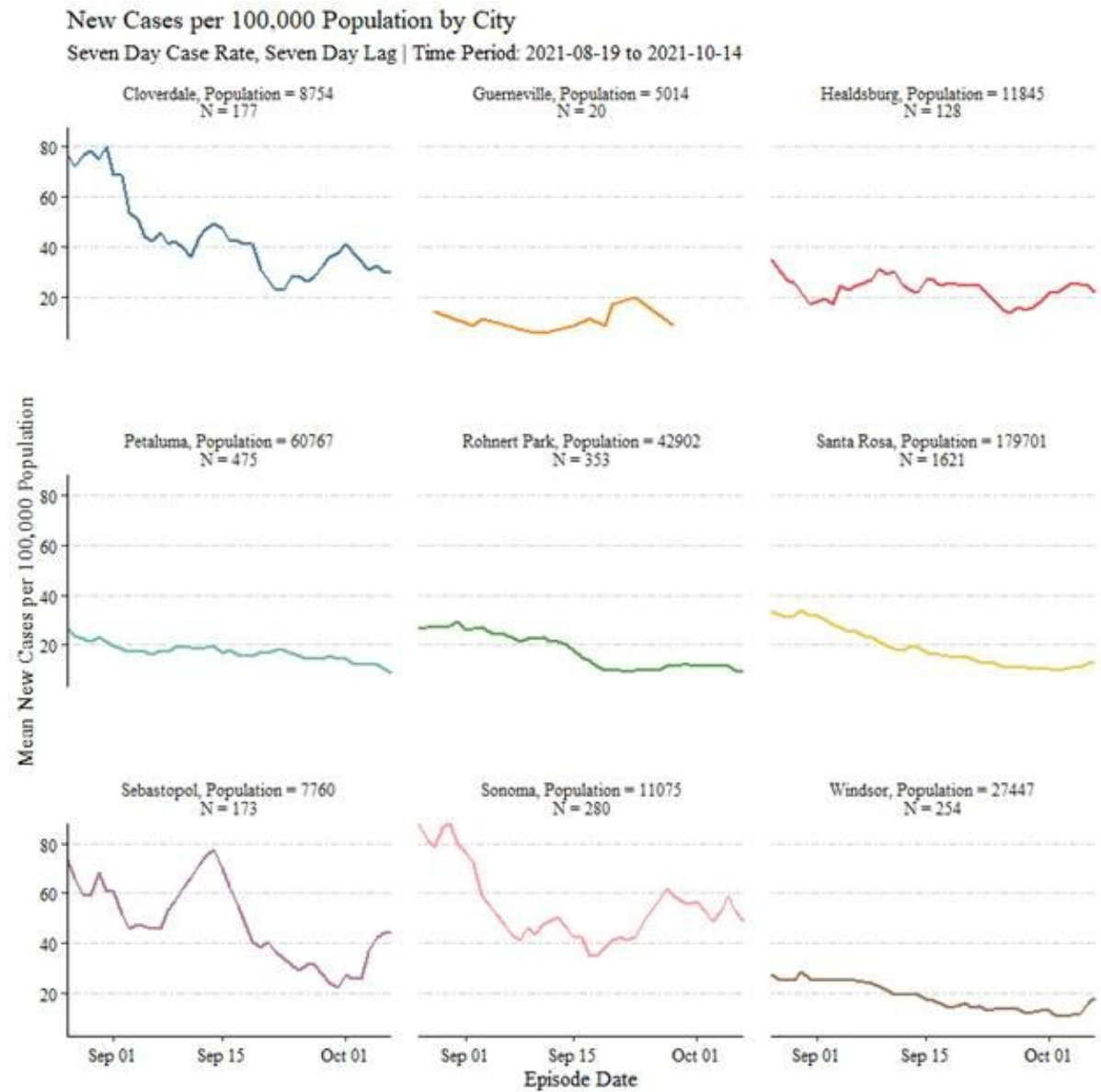


## Number of cases, Past 60 Days

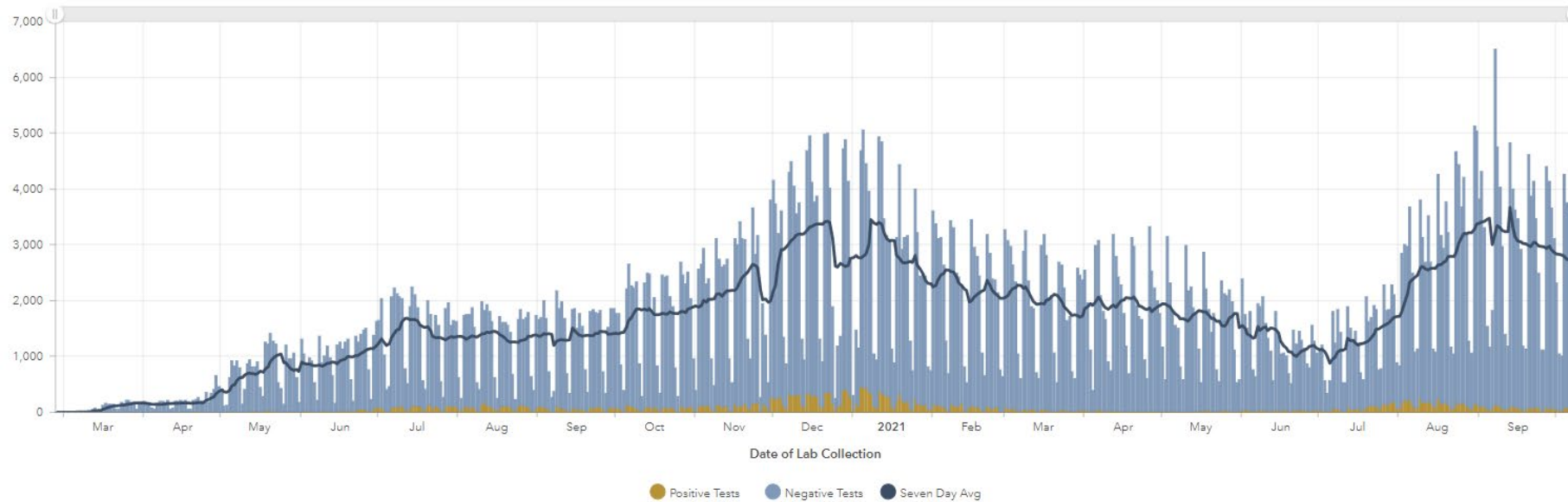
- White (1,816)
- Latinx (1,212)
- Asian (85)
- Black/African American (67)
- Multiracial (40)
- American Indian/Alaskan Native (26)
- Pacific Islander (22)

# Case Rate Trends by City, Past 60 Days

- The greatest number of cases are occurring in Santa Rosa, Petaluma, Rohnert Park, and Sonoma
- Relative to population size, the weekly rate of new cases per 100,000 population is highest in Sonoma, Sebastopol and Cloverdale

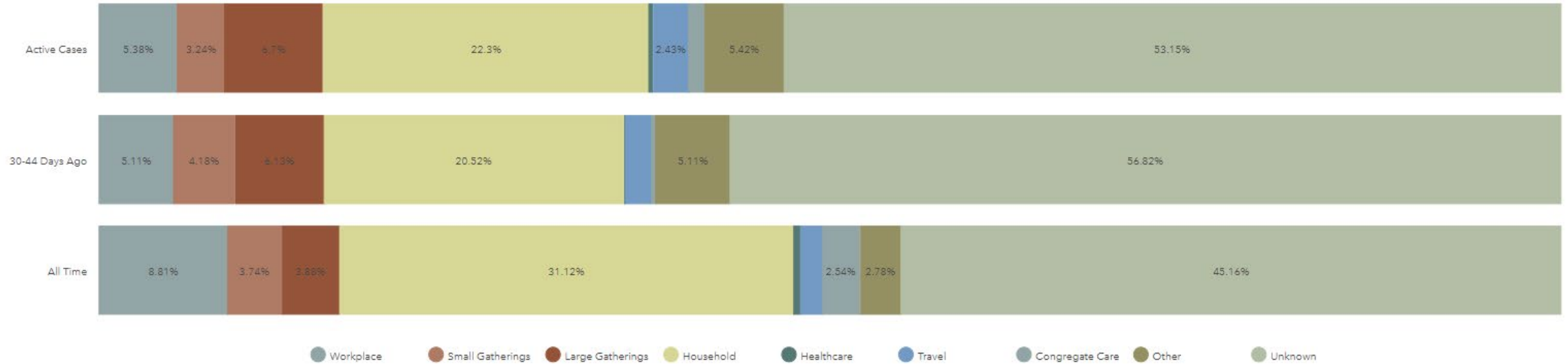


# Total Tests per Day



- **While still elevated, testing has decreased** among all race/ethnicities, age categories, and has stabilized or decreased across all geographies
- **Conducting 564 tests per 100,000 residents per day** (7 day average, 7 day lag)

# Source of Infection



- Household transmission remains most common source of transmission followed by gatherings and workplace transmission

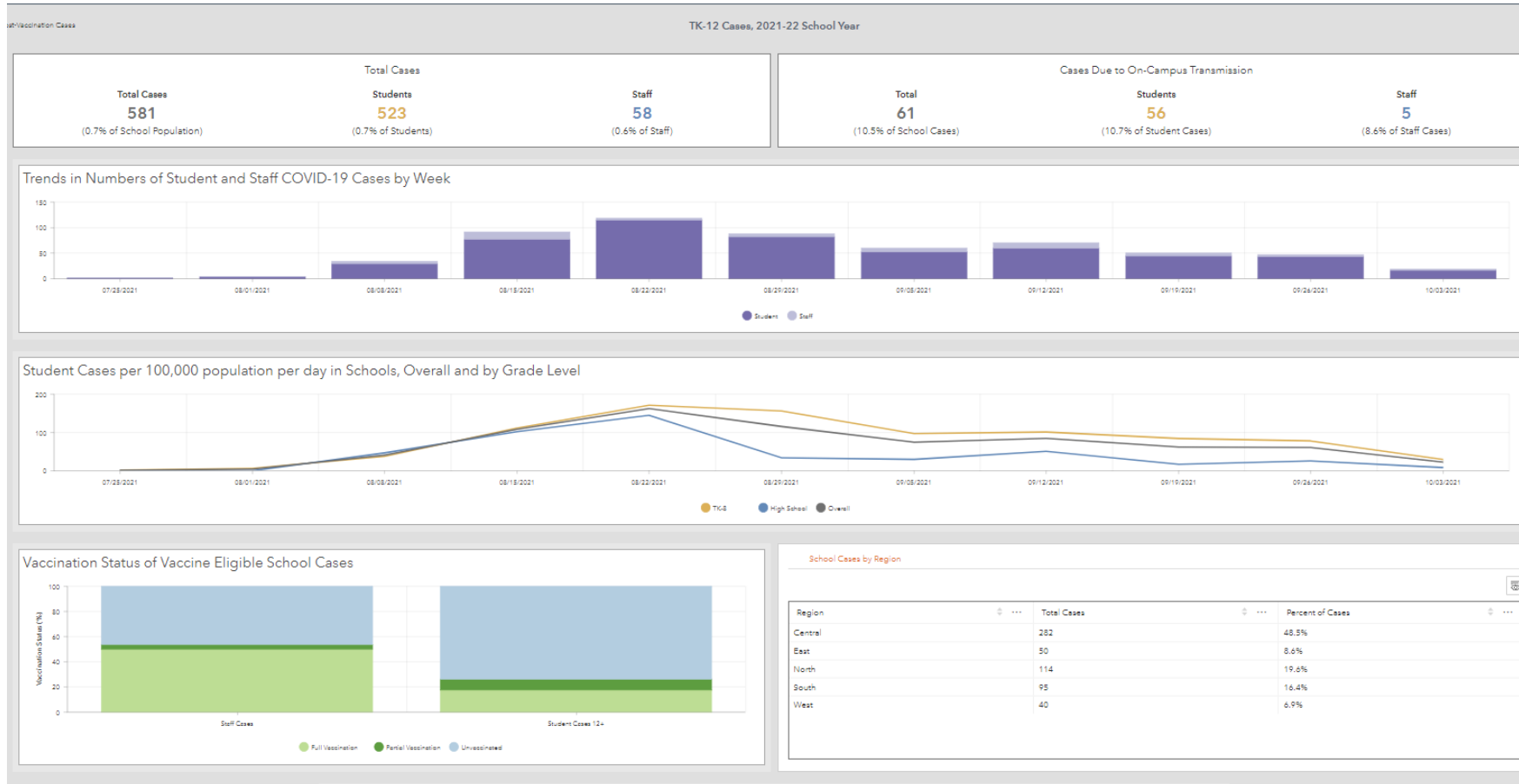


# Fall 2021 COVID-19 School Cases

- Since opening for fall instruction, there have been **632** school related cases
  - **366** elementary school cases
  - **147** high school cases
  - **118** middle school cases
  - **<5** cases in special education schools
- 569 student cases/63 staff cases
- 67 of the cases were confirmed to have occurred due to on-campus transmission



# New Dashboard Page

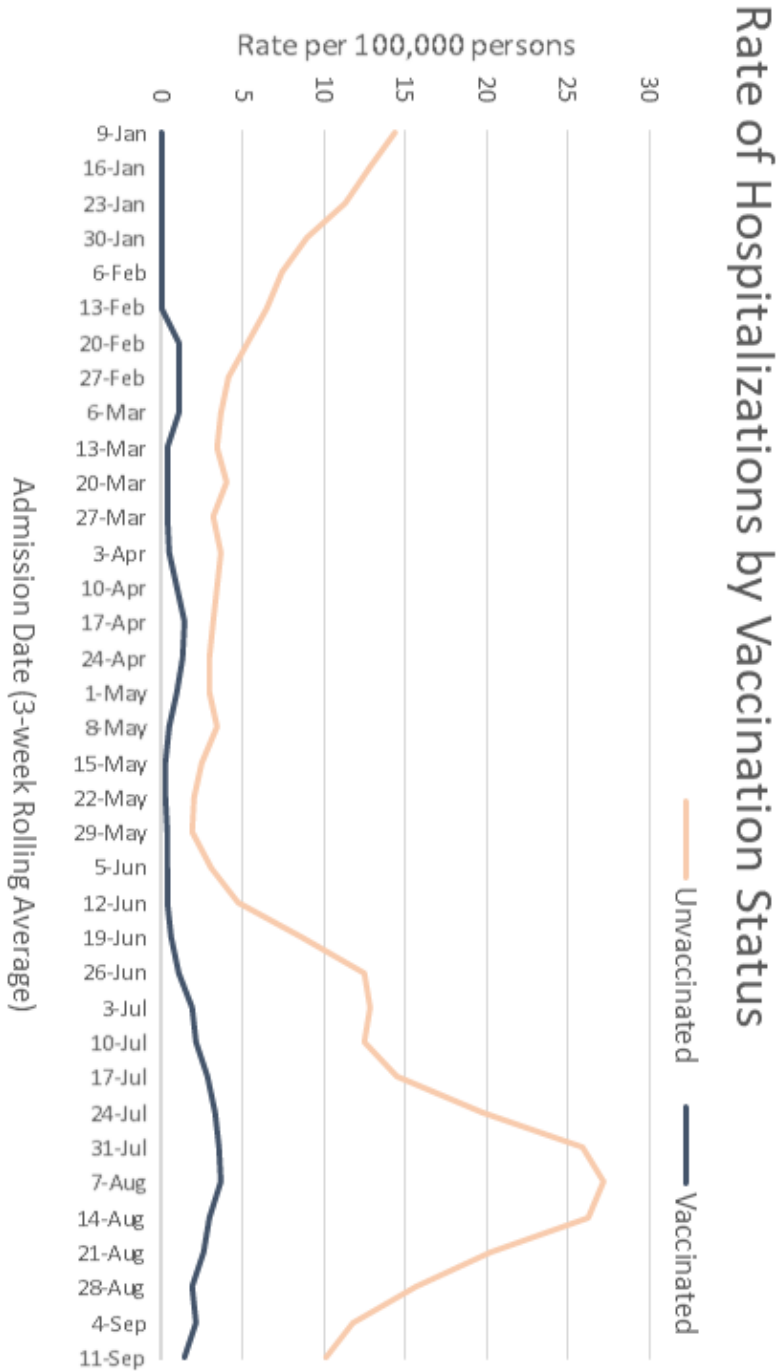


- A new page is now available on Sonoma County's COVID case data dashboard tracking **TK-12 student and staff cases**

# COVID-19 Hospitalization Rates by Vaccination Status

Unvaccinated persons are hospitalized at a much higher rate compared to those fully vaccinated

- 7x more frequently overall
- Up to 14x more frequently during the peak of the Delta surge



# COVID-19 Death Rates by Vaccination Status

(May-present)

	Vaccinated	Vaccinated	Rate per	Not	Unvaccinated	Rate per
	Vaccinated	population	100,000	vaccinated	population	100,000
16*-44	0	127862	0	10	33924	29.5
45-54	1	48850	2.0	11	8647	127.2
55-64	5	56914	8.8	16	9969	160.5
65+	20	90,830	22.0	23	4033	570.3
Total -unadjusted death rate	26	338144	7.7	60	124847	48.1
Age-adjusted death rate**			4.87			147.85

^Deaths from May 1, 2021 to date

\*\*Weighted to 2000 US standard population (for the population 15+)

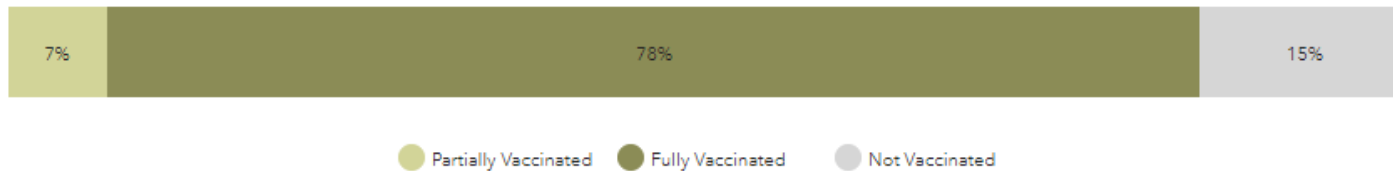
\*Std pop is 15-44

- **Local unvaccinated individuals are over 30 times more likely to die from COVID-19 than are vaccinated individuals, when adjusting for age**
- In the 16-44 year old age group, the unvaccinated death rate is 29.5 deaths per 100,000 as compared to 0 deaths per 100,000 among vaccinated individuals
- In the 65+ age group, this difference grows to a rate of over 570 deaths per 100,000 among unvaccinated individuals as compared to 22 deaths per 100,000 among the vaccinated

# Vaccine Administration

**715,937 doses administered (as of 10/18)**

Percent Population 12+ Vaccinated



**Residents partially  
vaccinated:**

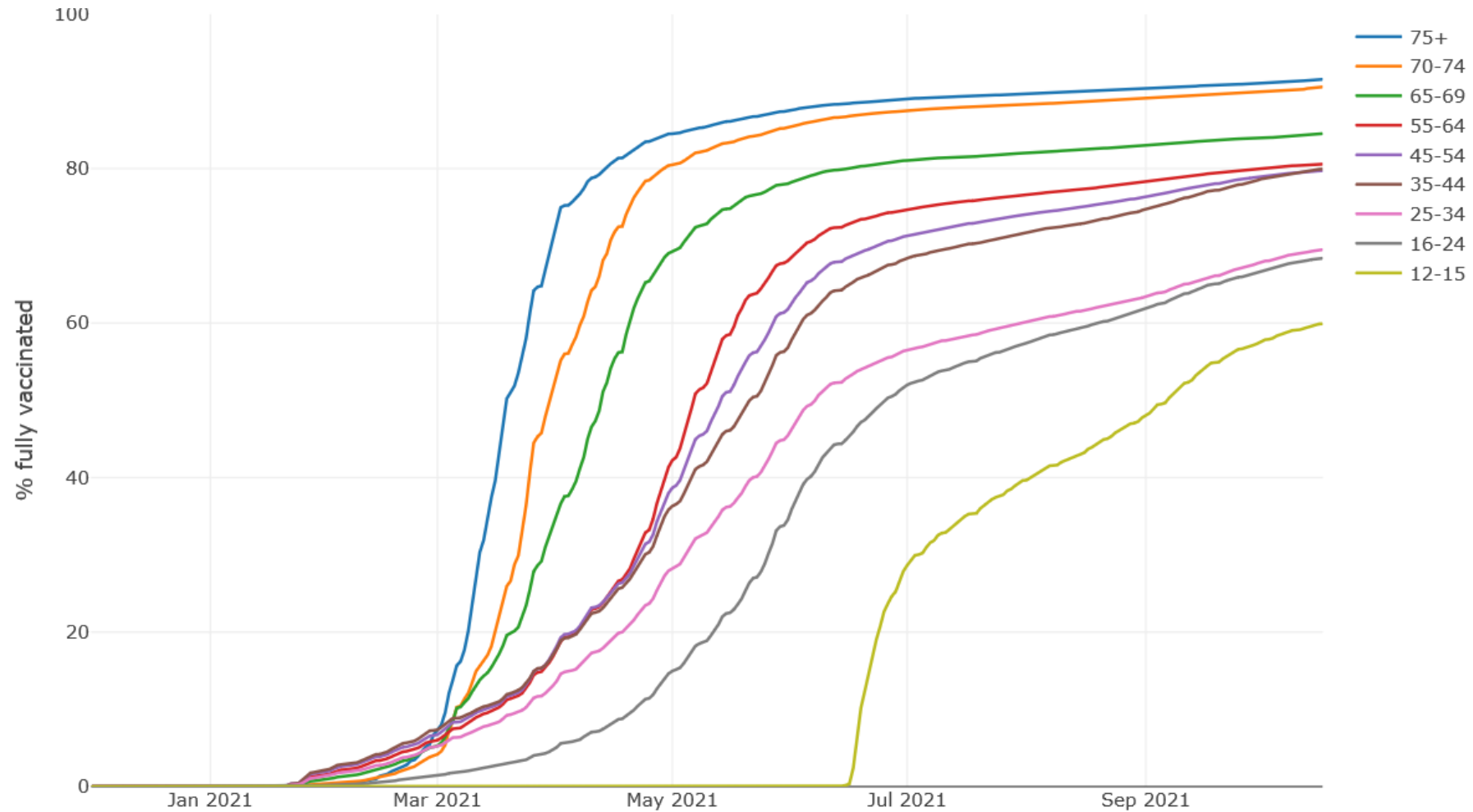
**30,956**

**Residents fully  
vaccinated:**

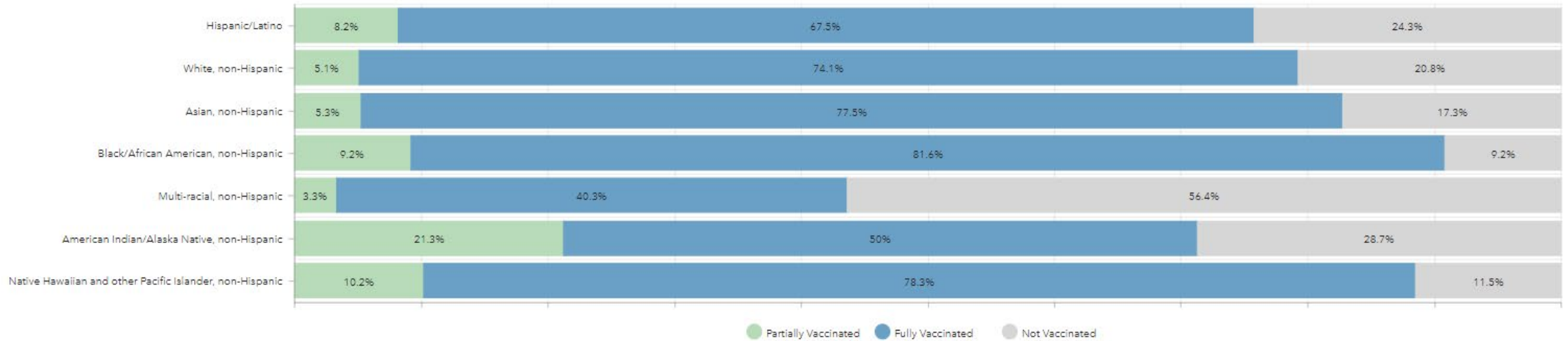
**338,984**

**85% of the Sonoma County population aged 12+ is at least partially vaccinated  
(78% fully vaccinated; 7% partially vaccinated)**

# Trends in Vaccination by Age Group

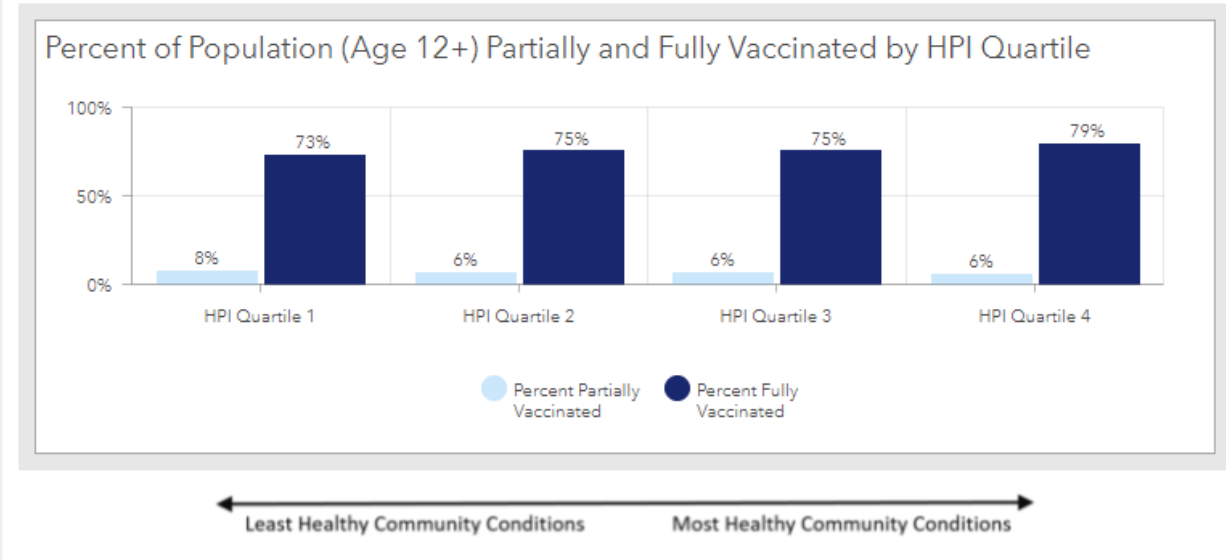
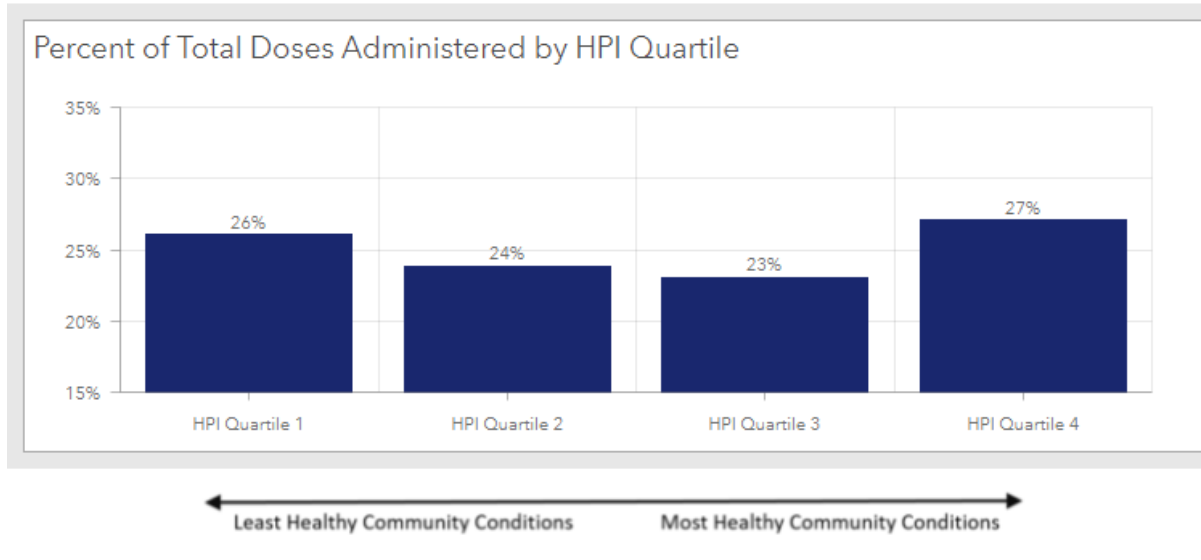


# Proportion Vaccinated Within Each Race/Ethnicity



- A smaller proportion of Latinx, American Indian/Alaskan Native, and multiracial residents are fully vaccinated as compared to residents of other racial/ethnic groups

# Vaccine Equity Measures



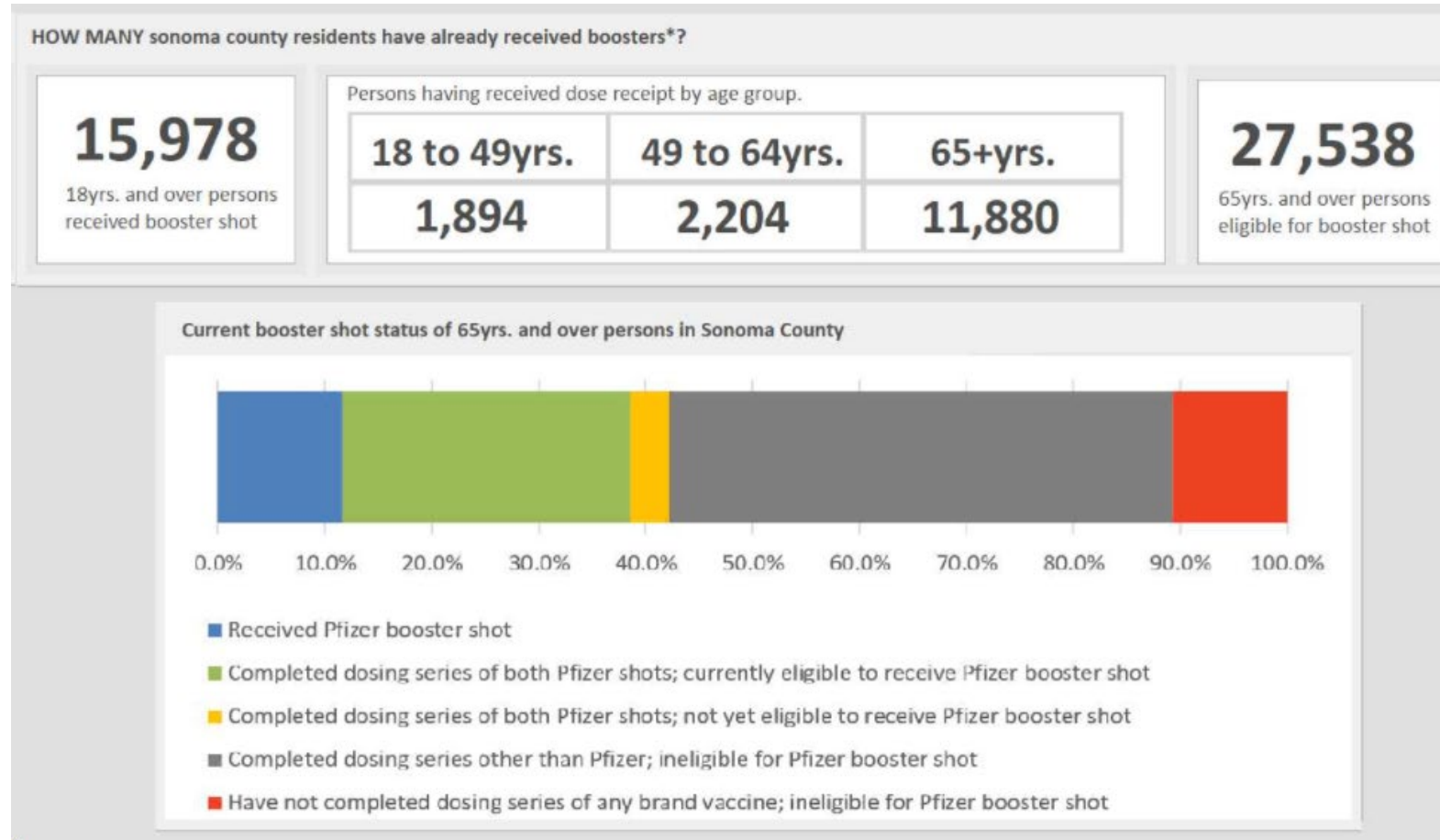
- Currently, 26% of vaccine doses have been administered to residents in the lowest quartile of the Healthy Places Index in which residents have access to the fewest resources
- 81% of residents in this quartile are at least partially vaccinated (8% partially vaccinated; 73% fully vaccinated)



# Vaccine Outreach and Booster Doses

- If individuals have not yet received their 1<sup>st</sup> or 2<sup>nd</sup> dose of vaccine, they are strongly encouraged to do so
  - Local unvaccinated residents are 7x more likely to be hospitalized and over 30 times more likely to die than are fully vaccinated residents with COVID-19
  - Since June, concerning increase in deaths among unvaccinated individuals under age 45
    - Average age of COVID-19 death of unvaccinated residents is 60 years as compared to 77 years among fully vaccinated
- Boosters are available and recommended for:
  - adults aged 65+
  - adults 50-64 years with chronic or comorbid conditions
  - younger adults with comorbid conditions (i.e., obesity, diabetes, heart conditions, etc.)


# Pfizer Booster Dose Administration (10/17)



# Proposed ABAHO Criteria for Lifting Mask Mandate

## CDC Level of Community Transmission in Yellow for at least 3 weeks

- CDC calculates a rolling *weekly* case rate per 100,000 population based on the number of cases reported in the prior seven days

				
	Low	Moderate	Substantial	High
New cases per 100,000 persons in the past 7 days*	<10	10-49.99	50-99.99	≥100
Percentage of positive NAATs tests during the past 7 days**	<5%	5-7.99%	8-9.99%	≥10.0%

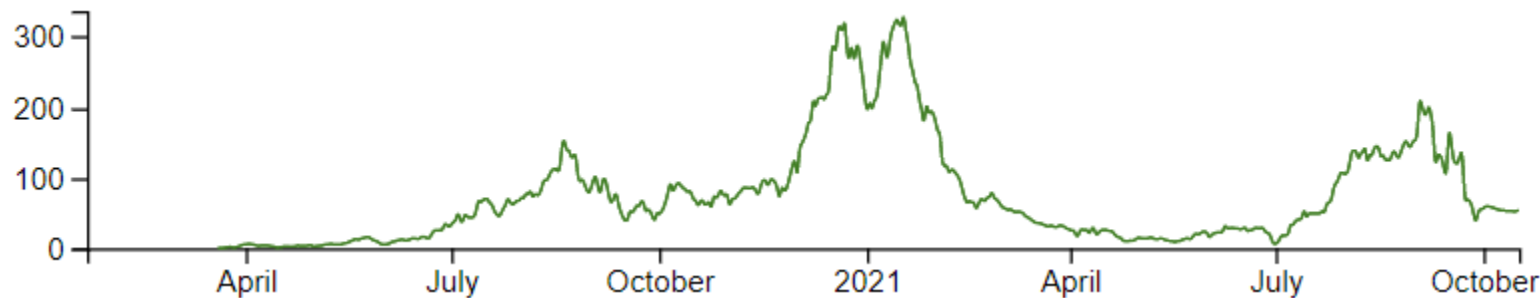
- To meet this criteria, Sonoma County must have **fewer than 50 cases per week per 100,000 population and test positivity lower than 8%** for at least 21 consecutive days

# What is Sonoma County's Current Standing?

- **Sonoma County currently does not meet this criteria**
  - We are at **71.81** cases per week per 100,000 population and 2.06% test positivity (Orange; Substantial Transmission)

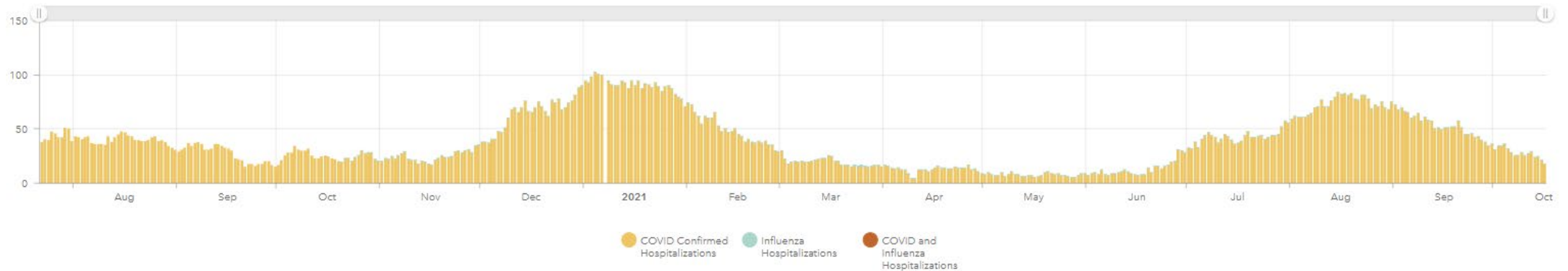
Data through Sun Oct 17 2021

Total Cases (last 7 days)	355
Case Rate (last 7 days)	71.81



# Low and Stable Hospitalizations, as Defined by Local Context

Hospitalizations

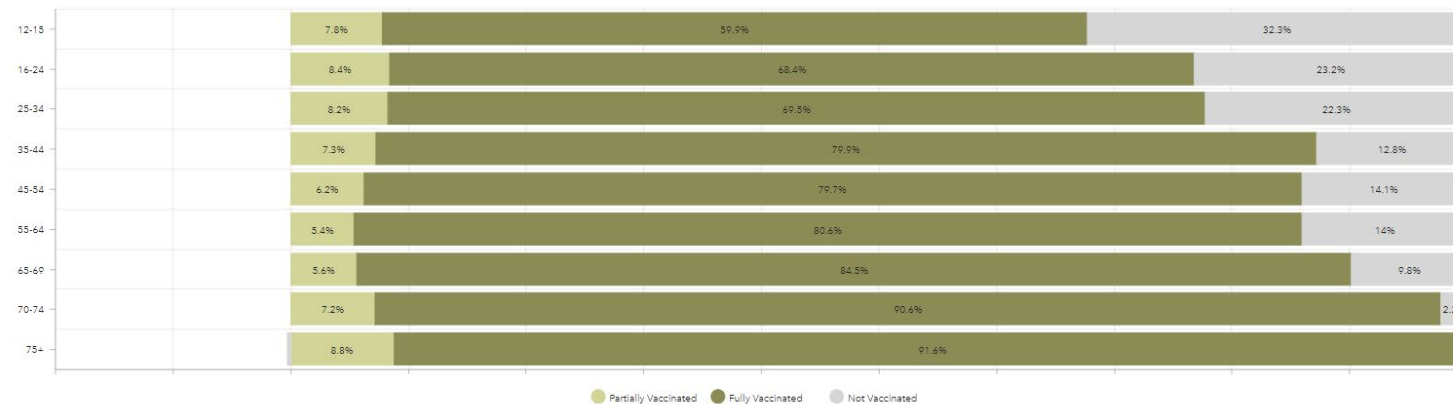


- As hospital resources and capacity vary by county, this criteria is being operationalized separately by each ABAHO county
- Sonoma County is still in the process of discussing this criteria with local hospitals and health partners

# Fully vaccinate at least 80% of total population, OR wait at least eight weeks after 5-11 year olds become vaccine eligible

- **Option A: Fully vaccinate at least 80% of total population**
  - Sonoma County has fully vaccinated **68.6%** of the total population aged 0+
  - We would need to vaccinate **56,552** more individuals to reach 80%
  - Our vaccine eligible population will increase by **37,185** once 5-11 year olds become eligible

Proportion of Each Age Group Vaccinated





Fully vaccinate at least 80% of total population, OR wait at least eight weeks after 5-11 year olds become vaccine eligible

- **Option B: Wait at least eight weeks after 5-11 year olds become eligible**
  - FDA/CDC/Western States Emergency Use Authorization for COVID-19 vaccine of 5–11-year-olds is expected at the end of October
  - Eight weeks after this time would be late December

# Proposed Masking Order Modification

- **Adds exemption to the face covering requirement in certain indoor settings with stable cohorts of fully vaccinated individuals**
  - Applies to workplaces, gyms, fitness centers, employee commuter vehicles, religious gatherings, college classes, and other organized gatherings of individuals who meet regularly.
  - Employer, host, or organizer may exempt fully vaccinated individuals from wearing face covering indoors if all individuals present are fully vaccinated, there are no more than 100 individuals, and the individuals gather on a regular basis.
  - In addition to verifying that all individuals present are fully vaccinated, the host/employer/organizer must maintain a list of all present, control access (no open access to general public permitted), and post signage warning individuals not to enter if they have symptoms consistent with COVID-19 or had a known exposure with COVID-19 case in the last 14 days.