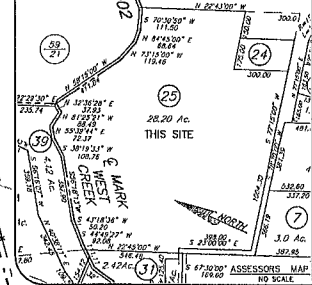
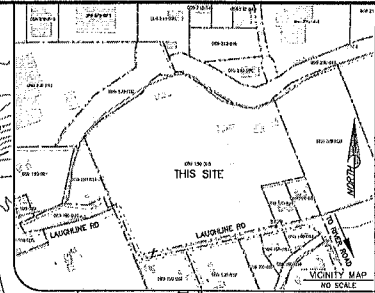
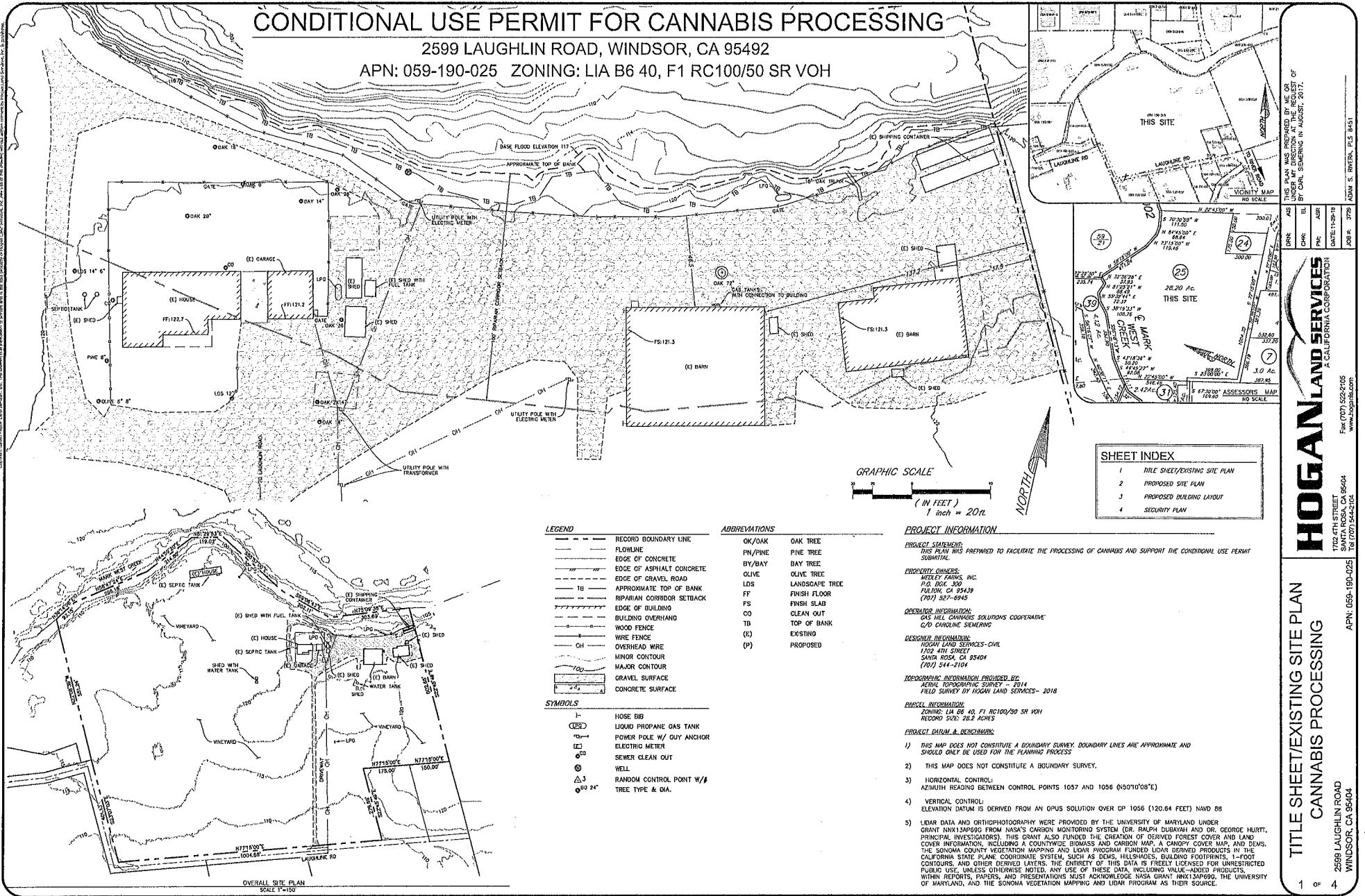


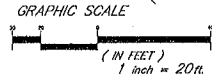
CONDITIONAL USE PERMIT FOR CANNABIS PROCESSING

2599 LAUGHLIN ROAD, WINDSOR, CA 95492

APN: 059-190-025 ZONING: LIA B6 40, F1 RC100/50 SR VOH



SHEET INDEX	
1	TITLE SHEET/EXISTING SITE PLAN
2	PROPOSED SITE PLAN
3	PROPOSED BUILDING LAYOUT
4	SECURITY PLAN



LEGEND

---	RECORD BOUNDARY LINE
---	FLOWLINE
---	EDGE OF CONCRETE
---	EDGE OF ASPHALT CONCRETE
---	EDGE OF GRAVEL ROAD
---	APPROXIMATE TOP OF BANK
---	RIPIARIAN CORRIDOR SETBACK
---	EDGE OF BUILDING
---	BUILDING OVERHANG
---	WOOD FENCE
---	WIRE FENCE
---	OVERHEAD WIRE
---	MINOR CONTOUR
---	MAJOR CONTOUR
---	GRAVEL SURFACE
---	CONCRETE SURFACE

SYMBOLS

---	HOSE BIB
---	LIQUID PROPANE GAS TANK
---	POWER POLE W/ GUY ANCHOR
---	ELECTRIC METER
---	SEWER CLEAN OUT
---	WELL
---	RANDOM CONTROL POINT W/ #
---	TREE TYPE & DIA.

ABBREVIATIONS

OK/OAK	OAK TREE
PN/PINE	PINE TREE
BY/BAY	BAY TREE
OLIVE	OLIVE TREE
LDS	LANDSCAPE TREE
FF	FINISH FLOOR
FS	FINISH SLAB
CO	CLEAN OUT
TB	TOP OF BANK
(E)	EXISTING
(P)	PROPOSED

PROJECT INFORMATION

PROJECT STATEMENT:
THIS PLAN WAS PREPARED TO FACILITATE THE PROCESSING OF CANNABIS AND SUPPORT THE CONDITIONAL USE PERMIT SUBMITTAL.

PROPERTY OWNERS:
WEEKLY FARMS, INC.
P.O. BOX 300
PULMON, CA 95439
(707) 527-6942

OPERATING INFORMATION:
GAS MEL CANNABIS SOLUTIONS COOPERATIVE
C/O CAROLINE SEMERINO

DESIGNER INFORMATION:
HOGAN LAND SERVICES-CIVIL
1702 4TH STREET
SANTA ROSA, CA 95404
(707) 544-1104

TOPOGRAPHIC INFORMATION PROVIDED BY:
AERIAL TOPOGRAPHIC SURVEY - 2014
FIELD SURVEY BY HOGAN LAND SERVICES - 2018

PARCEL INFORMATION:
ZONING: LIA B6 40, F1 RC100/50 SR VOH
RECORD 500.0 28.2 ACRES

PROJECT DATUM & BENCHMARK:

- THIS MAP DOES NOT CONSTITUTE A BOUNDARY SURVEY. BOUNDARY LINES ARE APPROXIMATE AND SHOULD ONLY BE USED FOR THE PLANNING PROCESS.
- THIS MAP DOES NOT CONSTITUTE A BOUNDARY SURVEY.
- HORIZONTAL CONTROL:
AZIMUTH READING BETWEEN CONTROL POINTS 1057 AND 1056 (N50°10'08"E)
- VERTICAL CONTROL:
ELEVATION DATUM IS DERIVED FROM AN OPUS SOLUTION OVER GP 1056 (120.64 FEET) NAD 83
- LIAR DATA AND ORTHOPHOTOGRAPHY WERE PROVIDED BY THE UNIVERSITY OF MARYLAND UNDER GRANT N0013AP99G FROM NASA'S CARBON MONITORING SYSTEM (DR. RALPH DUBAYAN AND DR. GEORGE HURTT, PRINCIPAL INVESTIGATORS). THIS GRANT ALSO FUNDED THE CREATION OF DERIVED FOREST COVER AND LAND COVER INFORMATION, INCLUDING A COUNTRYWIDE BIOMASS AND CARBON MAP, A CANOPY COVER MAP, AND DEMS. THE SONOMA COUNTY VEGETATION MAPPING AND LIAR PROGRAM FUNDED LIAR DERIVED PRODUCTS IN THE CALIFORNIA STATE PLANE COORDINATE SYSTEM, SUCH AS DEMS, HILLSHADES, BUILDING FOOTPRINTS, 1-FOOT CONTOURS, AND OTHER DERIVED LAYERS. THE ENTIRETY OF THIS DATA IS FREELY LICENSED FOR UNRESTRICTED PUBLIC USE, UNLESS OTHERWISE NOTED. ANY USE OF THESE DATA, INCLUDING VALUE-ADDED PRODUCTS, WHEN REPORTS, PAPERS, AND PRESENTATIONS MUST ACKNOWLEDGE NASA GRANT N0013AP99G, THE UNIVERSITY OF MARYLAND, AND THE SONOMA COUNTY VEGETATION MAPPING AND LIAR PROGRAM AS THEIR SOURCE.

TITLE SHEET/EXISTING SITE PLAN
CANNABIS PROCESSING

2599 LAUGHLIN ROAD
WINDSOR, CA 95404

HOGAN LAND SERVICES
A CALIFORNIA CORPORATION

1702 4TH STREET
SANTA ROSA, CA 95404
TEL (707) 544-1104

APN: 059-190-025

THIS PLAN WAS PREPARED BY ME OR UNDER MY DIRECTOR AT THE REQUEST OF BY CARL SEMERINO IN AUGUST, 2017.

DATE: 11-16-17
JOB #: 3799

ASR

BL

CHC

EL

FSR

PLC

PRC

SR

TRC

UDC

UDC

UDC

UDC

UDC

UDC

UDC

UDC

UDC

UDC

UDC

UDC

UDC

UDC

UDC

UDC

UDC

UDC

UDC

UDC

UDC

UDC

UDC

UDC

UDC

UDC

UDC

UDC

UDC

UDC

UDC

UDC

UDC

UDC

UDC

UDC

UDC

UDC

UDC

UDC

UDC

UDC

UDC

UDC

UDC

UDC

UDC

UDC

UDC

UDC

UDC

UDC

UDC

UDC

UDC

UDC

UDC

UDC

UDC

UDC

