

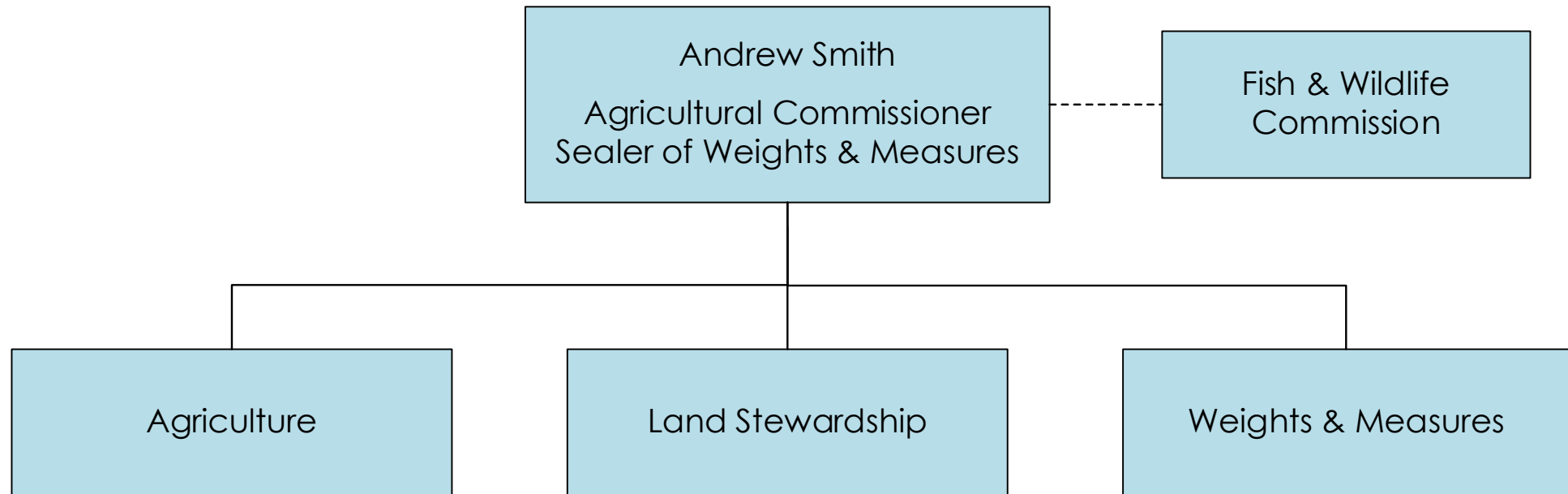


Agriculture/Weights & Measures FY 2021-22 Recommended Budget



Department Overview

	Budget	FTE
FY 2020-21 Adopted	\$7,799,376	38.5
FY 2021-22 Recommended	\$7,808,274	38.5
Net Change	\$8,898	0



Departmental Sources

FY 2021-22 Revenue Sources	
General Fund Contribution	\$2,217,063
State, Federal & Other Funds	\$3,175,700
Fees & Charges for Services	\$1,748,752
Other Departmental Revenue	\$241,100
Use of Fund Balance	\$22,930
Internal Reimbursements & Transfers	\$402,729
Total	\$7,808,274



Departmental Expenditures

FY 2021-22	Budget	FTE
Agriculture	\$5,831,203	29.5
Weights & Measures	\$1,074,594	6.0
Land Stewardship	\$902,477	3.0
Total	\$7,808,274	38.5



Key Operational Challenges and Opportunities

- Continue to move forward in aligning the department with the County's Equity, Diversity and Inclusion Initiative and apply an equity lens to public and stakeholder facing services.
- The Department is currently engaged in a study of its fees and charges. In FY 2021-22, Agriculture/Weights & Measures will need to implement the fee study recommendations that balance the Department's needs, the business climate, and County's financial and budget policies.
- Collaborate with other departments/agencies and stakeholders in the development of a County Agricultural Access program and policy for declared disasters. The program will protect agricultural workers, not interfere with emergency personnel, and allow agricultural practices to continue. Other departments include Animal Services, County Counsel, Emergency Services, Sheriff, Office of Equity, and the University of California Cooperative Extension. Stakeholders include those with agricultural properties, grape growers, wineries or other processing type of facilities, ranchers, and growers of other crops.

