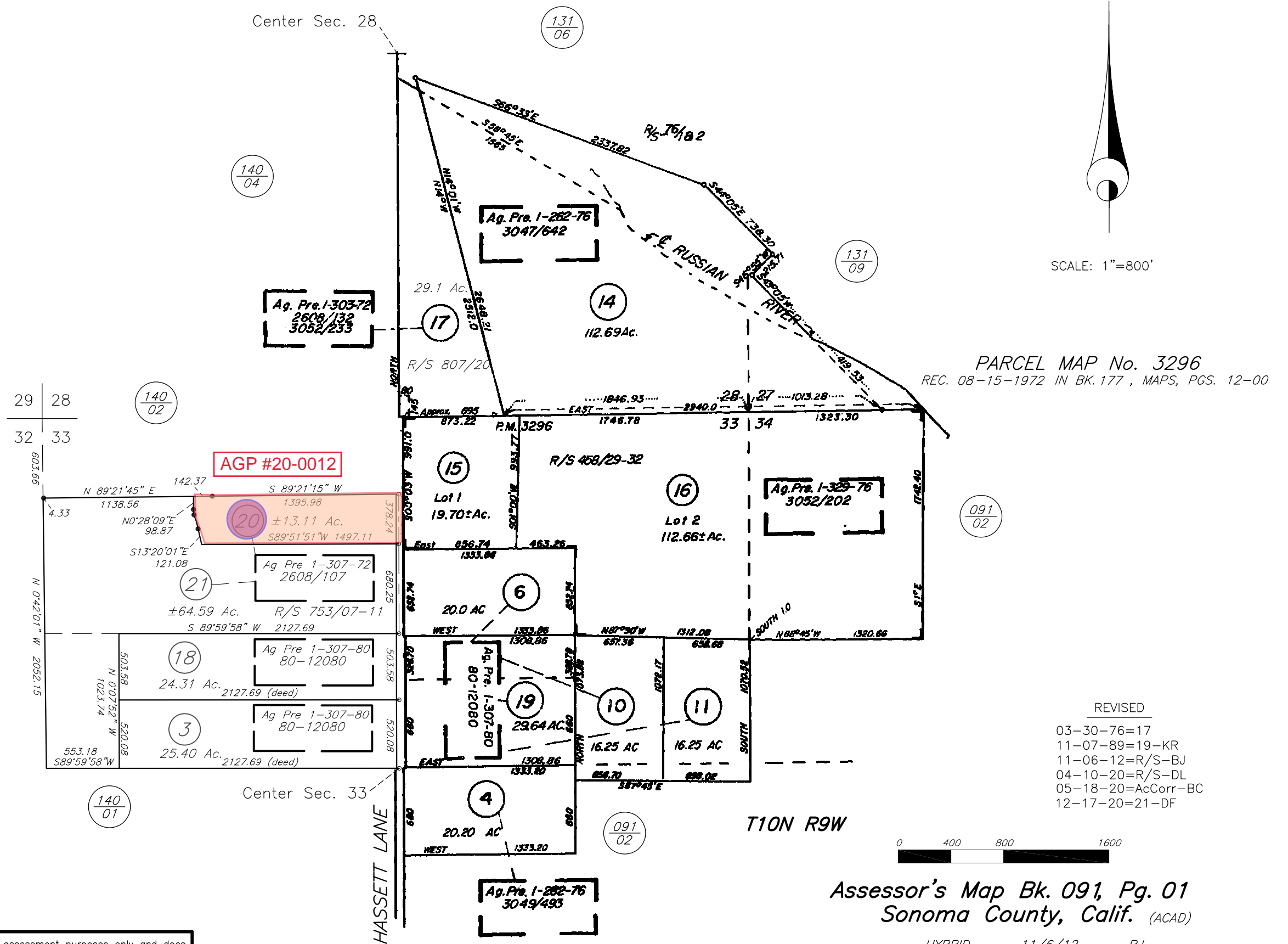


COUNTY ASSESSOR'S PARCEL MAP

TAX RATE AREA
097-016

091-01



NOTE: This map was prepared for the Sonoma County Assessor for assessment purposes only and does not indicate parcel legality or valid building sites. To verify legal parcel status check with your city or county development or planning division. No liability is assumed for the accuracy of the data delineated.