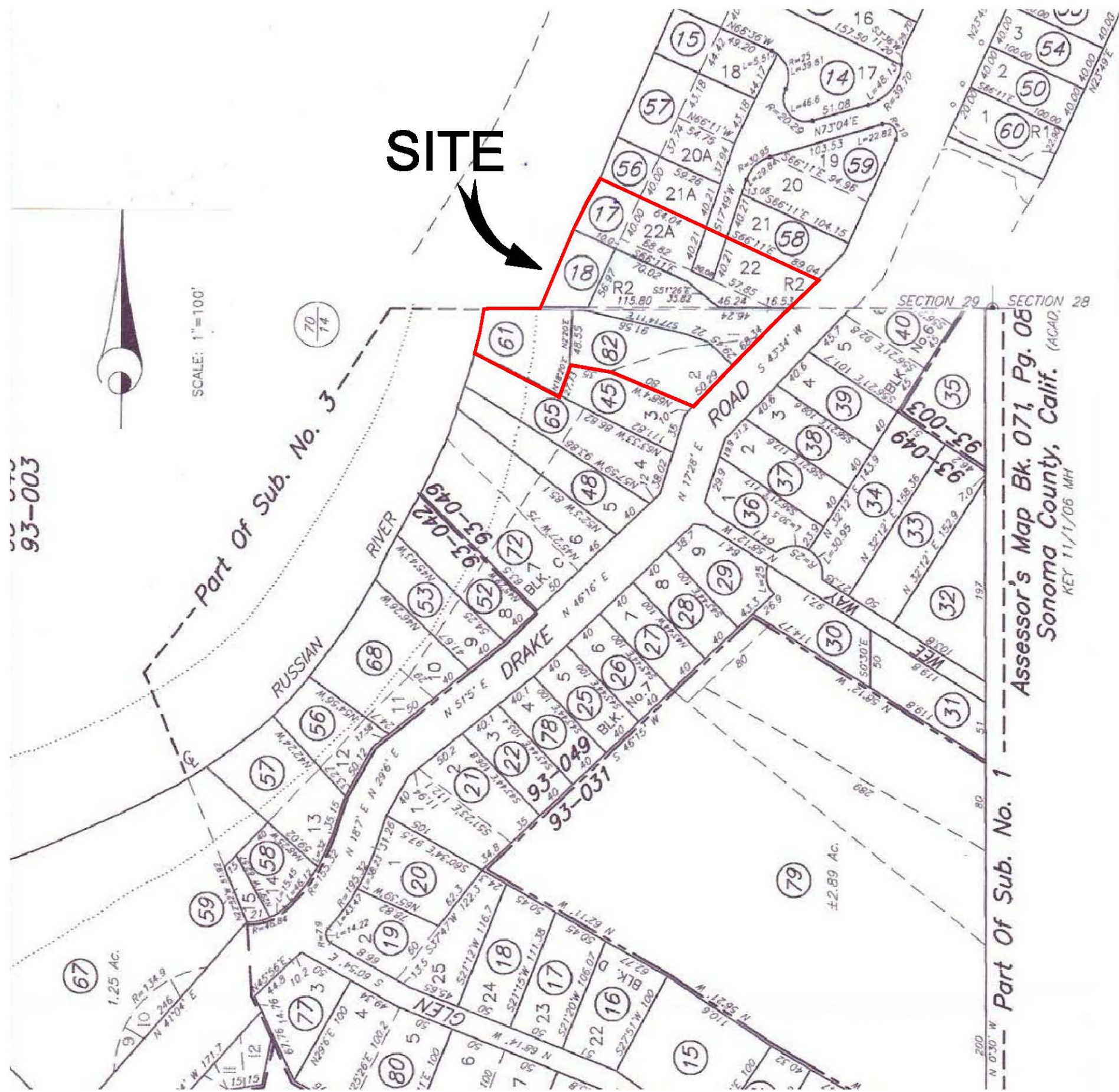
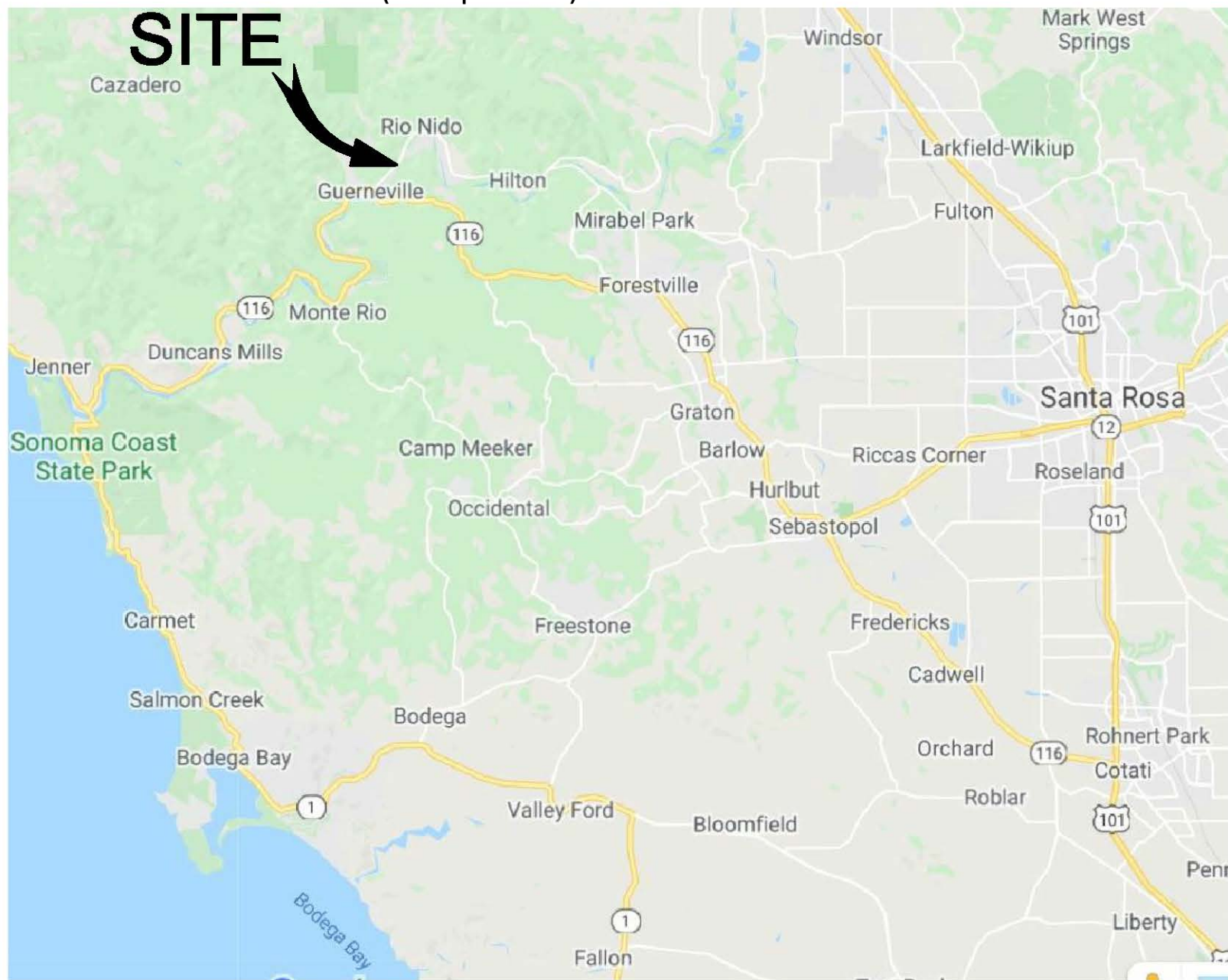


Site Map on USGS Topo "Guerneville"  
Scale 1"= 2,000'



County Assessor's Parcel Map  
Scale 1"= 100'



Vicinity Map on Google Maps  
Scale 1"= 3 miles

CONSTRUCTION QUANTITIES

Earthwork

soil cut for deflector keyways	210 Cu. Yds.
soil fill	140 cubic yards
soil offhaul	70 Cu. Yds.

Rock

Import Boulders 3 ton minus	550 cubic yards
6" minus rock to mix with soil	140 cubic yards

Remove 2 existing concrete piers	
concrete removal/ offhaul	3 Cu. Yds.

Erosion Control Materials

700 gram erosion control blanket	2,560 sq. ft.
weed free straw mulch	680 lbs.
native grass seed	15 lbs.

Riparian Planting

trees & shrubs	48 plants
sedge & rush	60 supercells

Offhaul Notes

All offhaul of vegetative matter and soil will be taken to Pacific Sanitation @ 590 Caletti Ave Windsor, for recycling.  
3 yards of concrete offhaul will be taken to Canyon Rock Quarry in Forestville for recycling.

PROJECT STATISTICS

total volume of fill  
550 yds boulders + 140 yds 6"– rock + 140 yds soil  
= 830 cu yds of rock and soil  
total volume soil cut= 210 Cu. Yds.

area of grading= 5,167 sq. ft. = 0.12 ac.  
(area of grading includes area of deflectors)

area of disturbance= 14,824 sq. ft. = 0.34 ac.  
(area of disturbance includes equipment and/or foot traffic)

Length of work along river bank= 135'

PURPOSE STATEMENT

This is a river bank stabilization project.  
The purpose of this project is to prevent future undermining of residence infrastructure on two properties, and historic redwood trees

For accessibility assistance with this document, please contact the Board of Supervisors at (707) 565-2241, Fax at (707) 565-3778, TDD at (707) 565-2241 or through the California Relay Service (by dialing 711).  
Para obtener ayuda con la accesibilidad de este documento, por favor, contacte la Junta de Supervisores de Sonoma al (707) 565-2241 o por fax al (707) 565-3778. Para el Aparato de Telecomunicaciones Para Personas con Problemas de la audición y sordera (TDD) llama a (707) 565-2241, o para el Servicio de Retransmisión de California (marque 711).

