



Glass Fire – Ratification of Proclamation of Local Emergency

Sonoma County Board of Supervisors

October 2, 2020

Summary

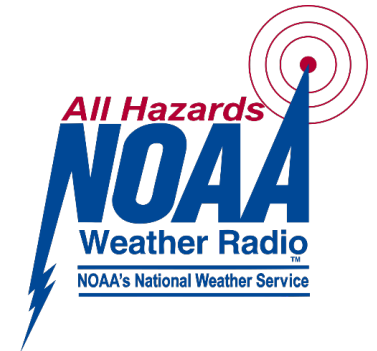
- Started in Napa County
- Cause under investigation
- As of 10/1:
 - 59,000 acres
 - 5% Containment
 - 2,100 Fire Personnel Assigned
- Red Flag thru 10/3





Alerts & Warnings

- Wireless Emergency Alerts
 - Kincade Fire: 15
- SoCoAlert
 - Kincade Fire: 26
- Emergency Alert System (EAS)
- NOAA Weather Radio
- Nixle
- Hi/Lo Sirens



Evacuations

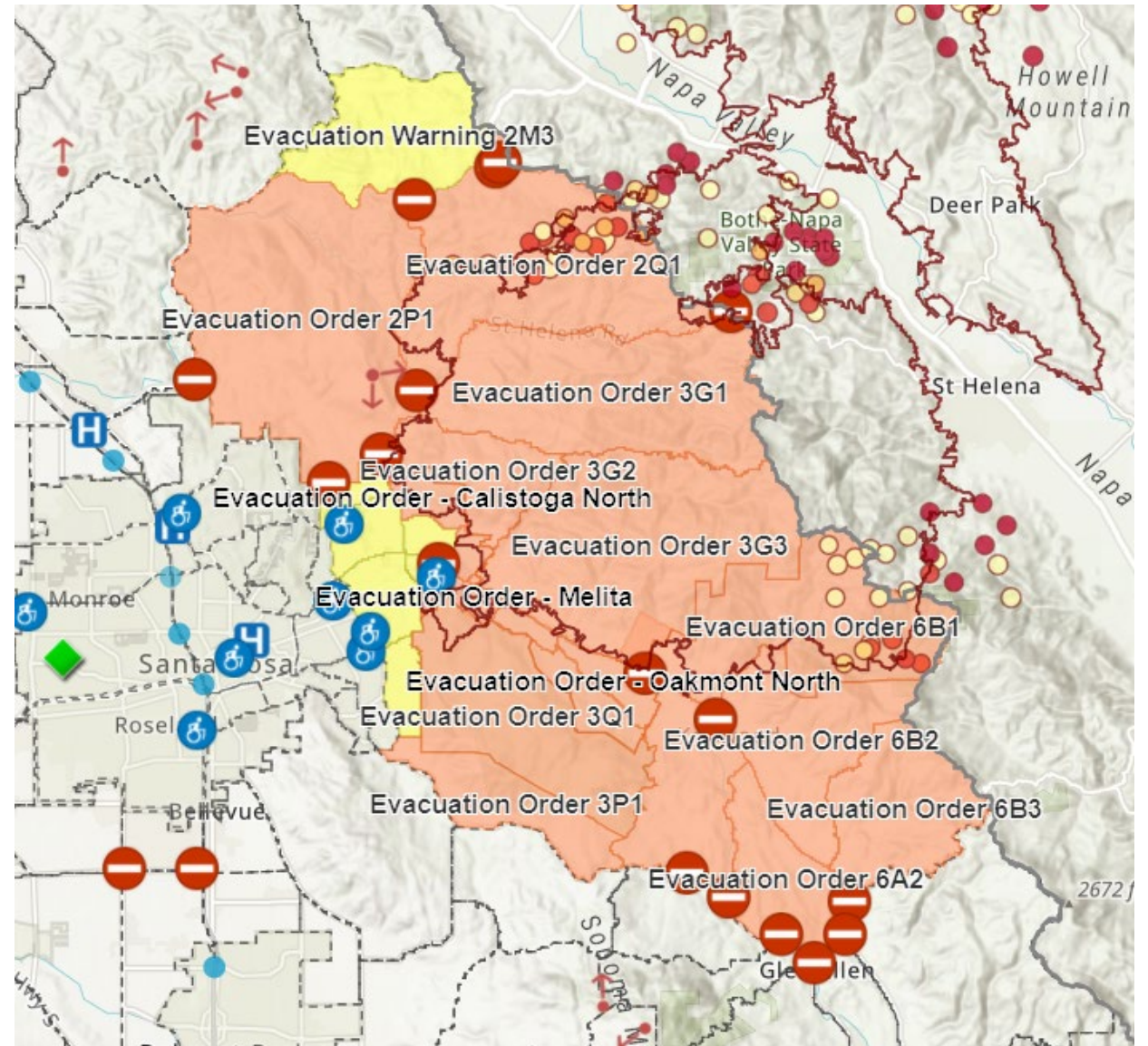
Used draft mapping project

13 County zones

14 Santa Rosa zones

48,500 residents

Glass Fire Incident Map



Care & Shelter

- 8 Shelters
- Shelter Capacity: 800
- Peak Shelter Count: 348
- As of Oct 1: 112



Public Information (9/27 – 10/1)

- **Facebook**

- 72 posts
- 57,806 engagements (likes, loves, etc)
- 11 videos (Average reach: 17,515 viewers / High: 32,700)
- 192,674 total viewers

- **Twitter:**

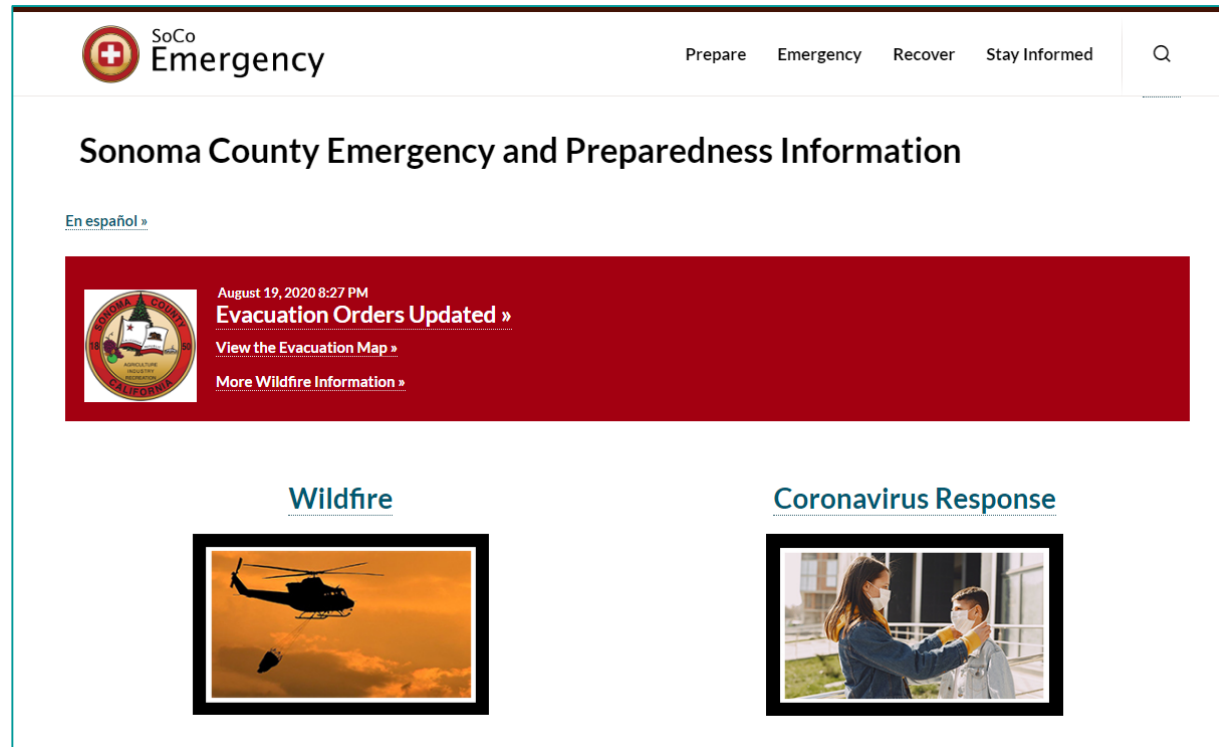
- 52 Tweets; Engagements: 8,839

- **SoCoEmergency.org**

- 191,000 users
- 330,000 sessions
- Most Popular Page: Evacuation Update



www.SoCoEmergency.org



The screenshot shows the homepage of the Sonoma County Emergency website. At the top, there is a navigation bar with the "SoCo Emergency" logo on the left and links for "Prepare", "Emergency", "Recover", and "Stay Informed" on the right. A search icon is also present. Below the navigation bar, the main heading reads "Sonoma County Emergency and Preparedness Information". A link for "En español »" is located below the heading. A prominent red banner features the Sonoma County seal, the date and time "August 19, 2020 8:27 PM", and the text "Evacuation Orders Updated »". Below this text are two links: "View the Evacuation Map »" and "More Wildfire Information »". Under the banner, there are two sections: "Wildfire" with an image of a helicopter dropping a fire retardant, and "Coronavirus Response" with an image of two people wearing masks.

SoCo
Emergency

Prepare Emergency Recover Stay Informed

Sonoma County Emergency and Preparedness Information

[En español »](#)

August 19, 2020 8:27 PM
Evacuation Orders Updated »
[View the Evacuation Map »](#)
[More Wildfire Information »](#)

[Wildfire](#)

[Coronavirus Response](#)



Initial Damage Estimate

- County Response Costs To-Date: \$2.3M
 - Labor \$1.5M
 - Mutual Aid \$277K
 - Supplies/Equip \$565K
- County Damages Estimate: \$15.9M

Fire Management Assistance Grant (FMAG) approved
Gubernatorial Proclamation received – no CDAA authorization yet
Major Presidential Disaster Declaration pending



Recovery

- Planning
 - Points of Distribution
 - Joint Local Assistance Center
 - Watershed Protection
 - Disaster Debris

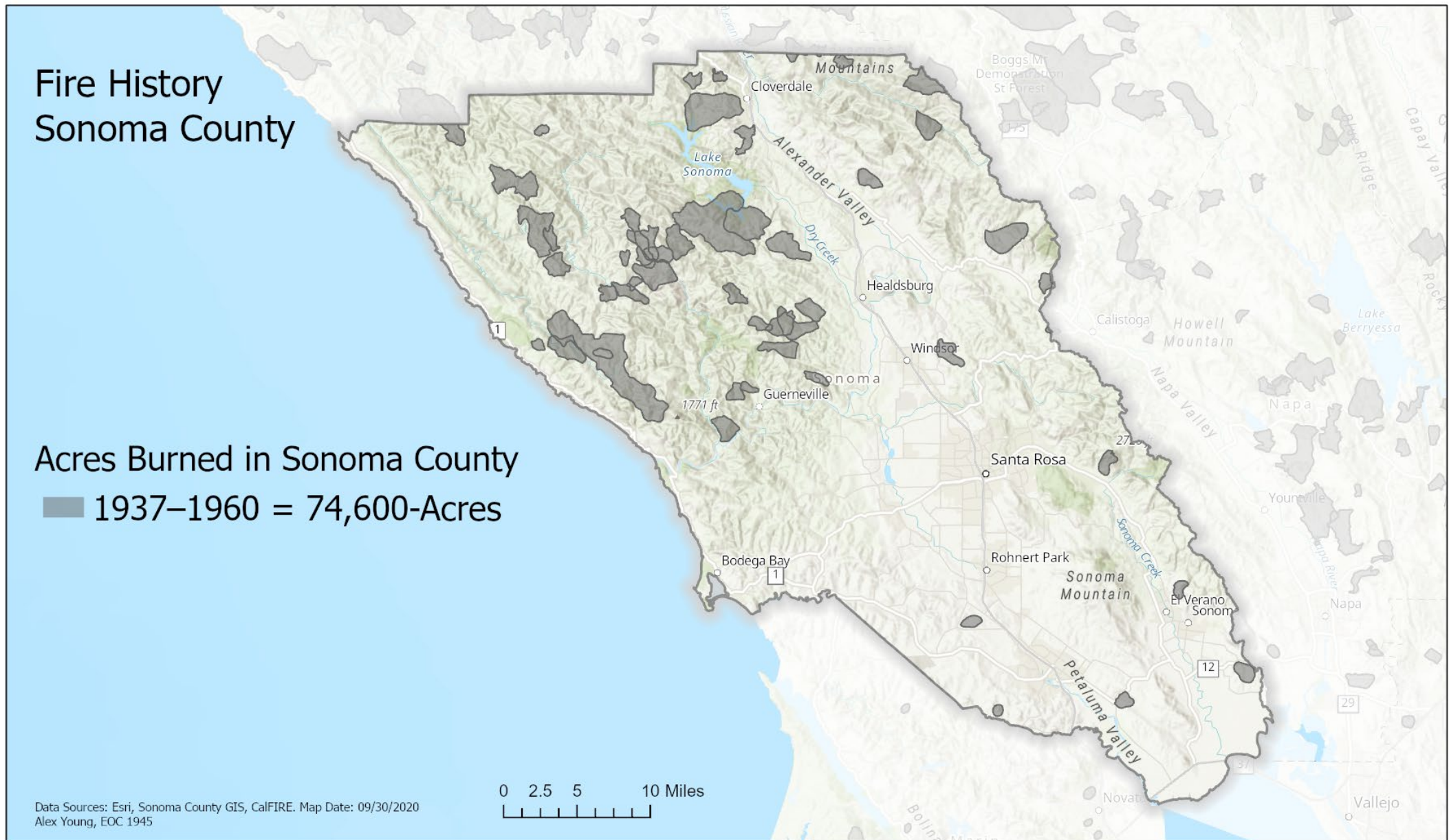


Questions



Fire History Sonoma County

Acres Burned in Sonoma County
■ 1937–1960 = 74,600-Acres

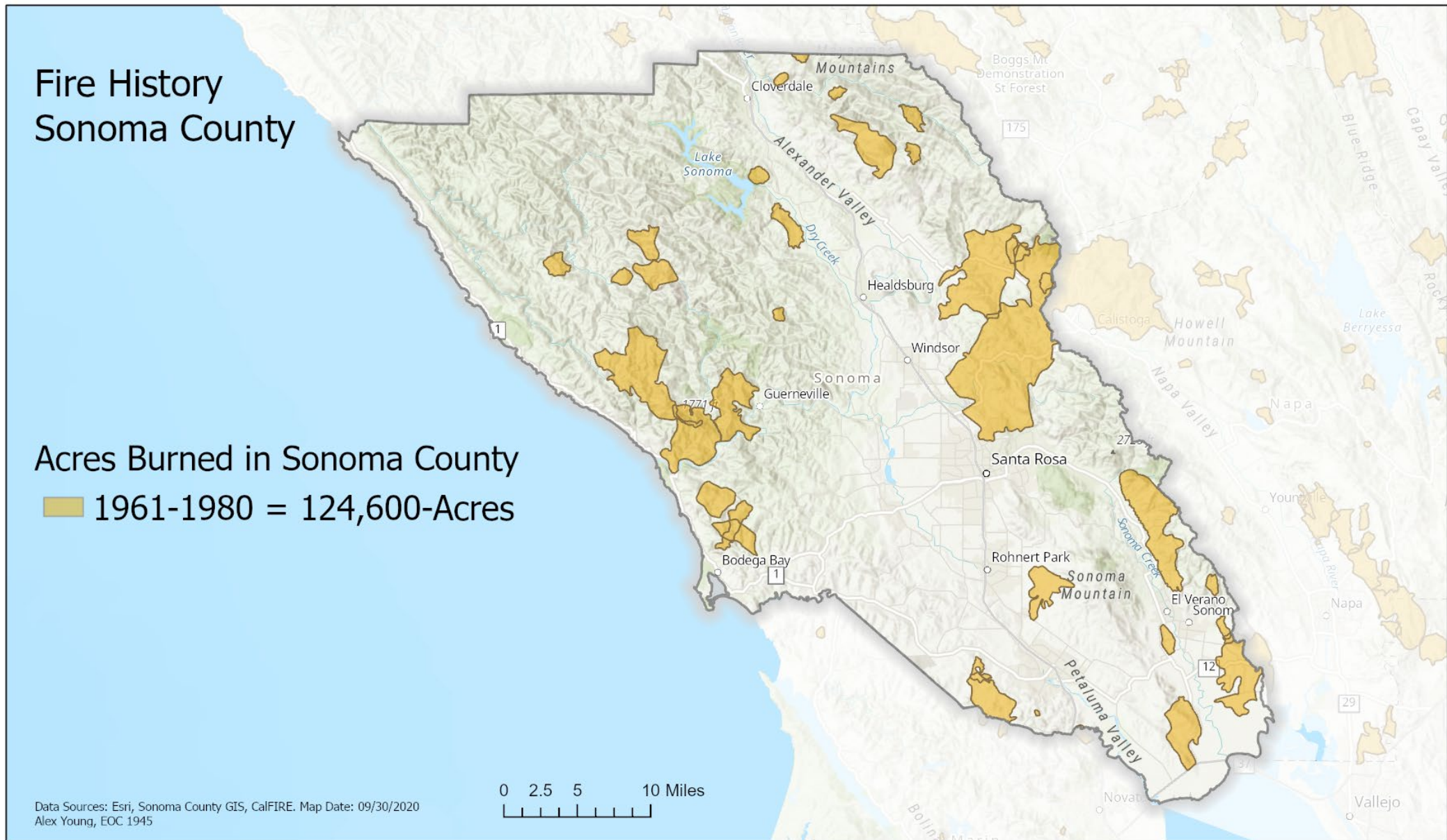


Data Sources: Esri, Sonoma County GIS, CalFIRE. Map Date: 09/30/2020
Alex Young, EOC 1945



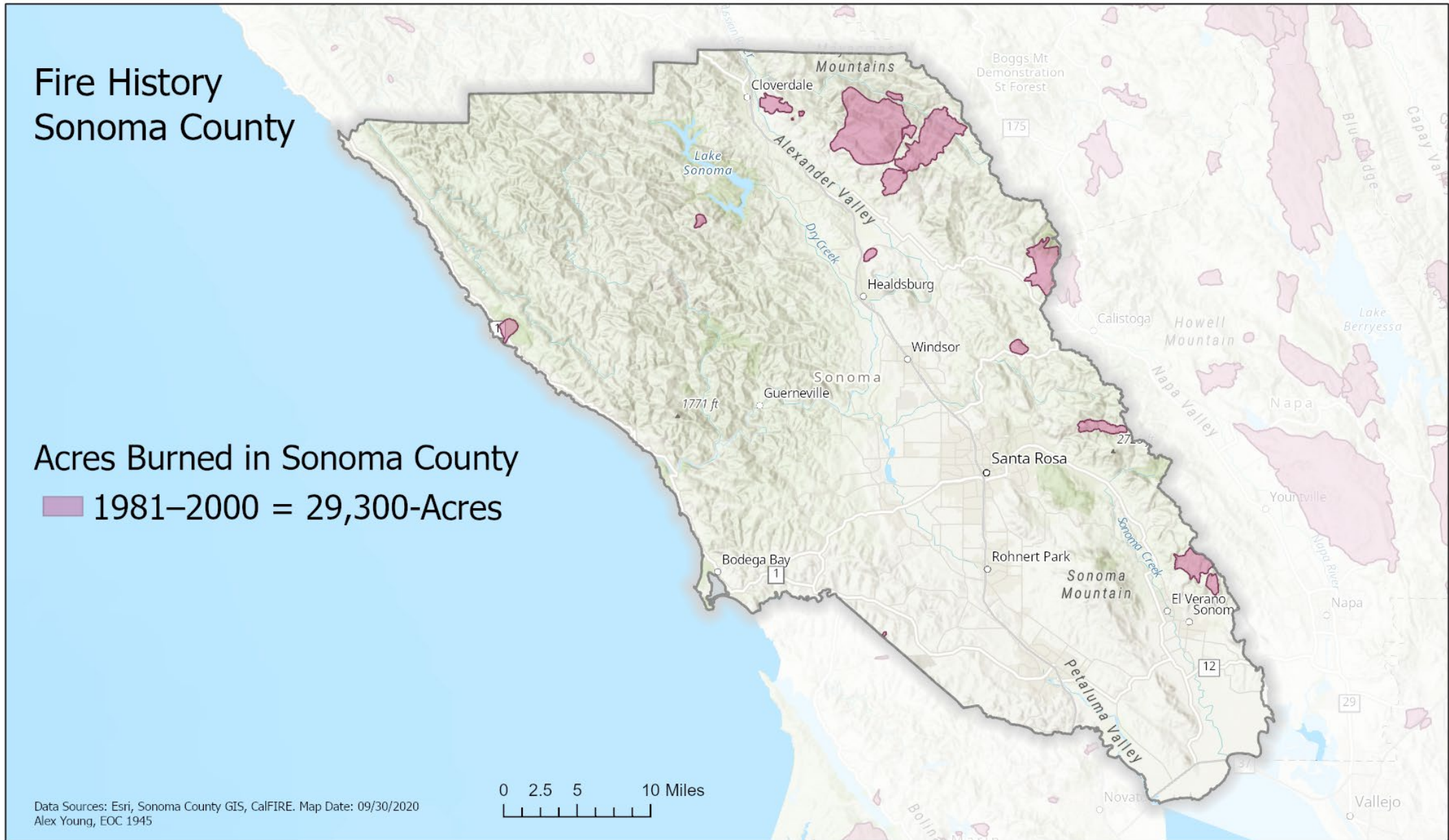
Fire History Sonoma County

Acres Burned in Sonoma County
■ 1961-1980 = 124,600-Acres



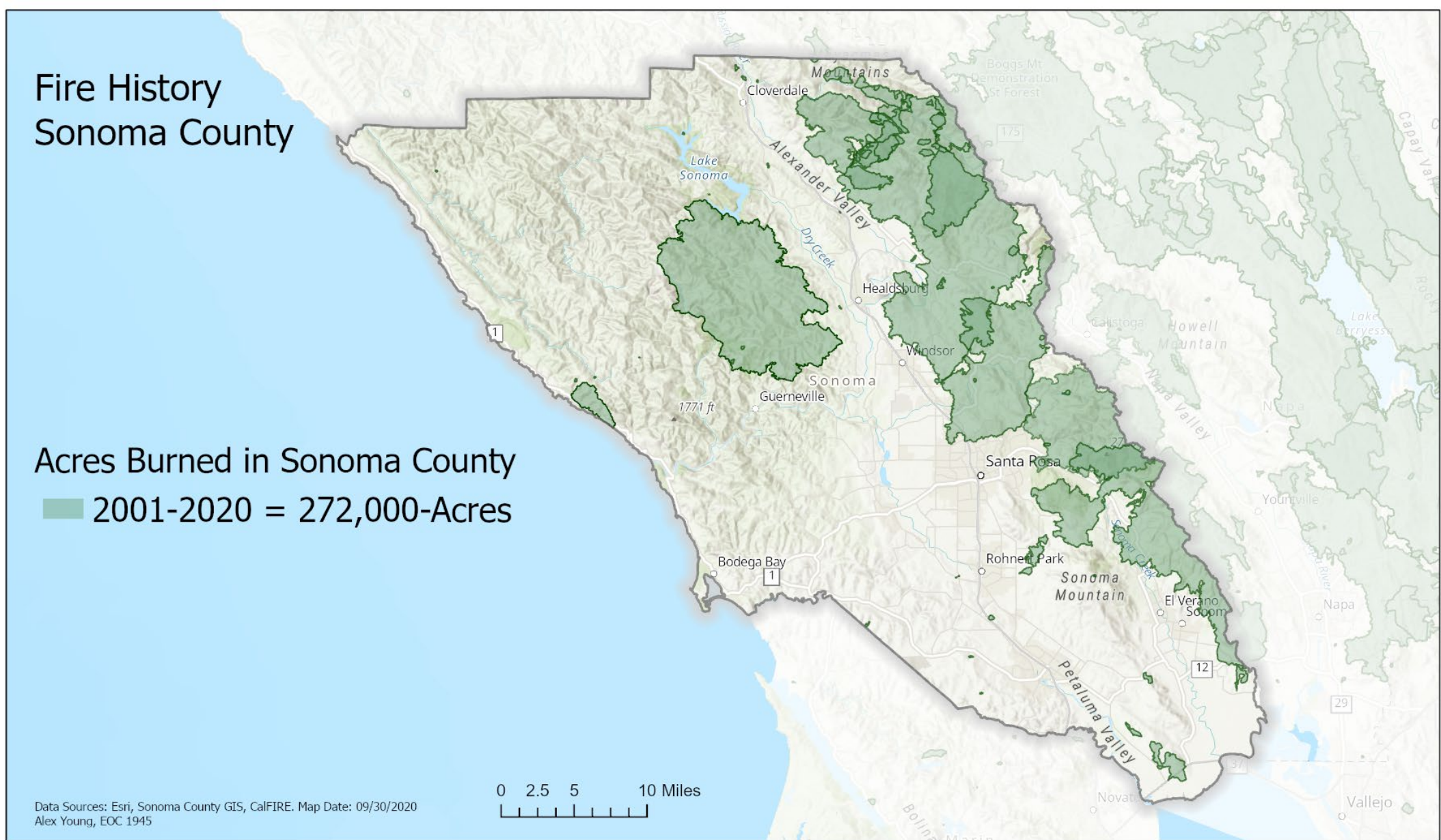
Fire History Sonoma County

Acres Burned in Sonoma County
■ 1981–2000 = 29,300-Acres



Fire History Sonoma County

Acres Burned in Sonoma County
■ 2001-2020 = 272,000-Acres



Data Sources: Esri, Sonoma County GIS, CalFIRE. Map Date: 09/30/2020
Alex Young, EOC 1945



Fire History Sonoma County

Acres Burned in Sonoma County

- 1937–1960 = 74,600-Acres
- 1961–1980 = 124,600-Acres
- 1981–2000 = 29,300-Acres
- 2001–2020 = 272,000-Acres

Data Sources: Esri, Sonoma County GIS, CalFIRE. Map Date: 09/30/2020
Alex Young, EOC 1945

0 2.5 5 10 Miles



Fire Information

