



FY 2020-21 Budget

Budget Workshops

Economic Development Board

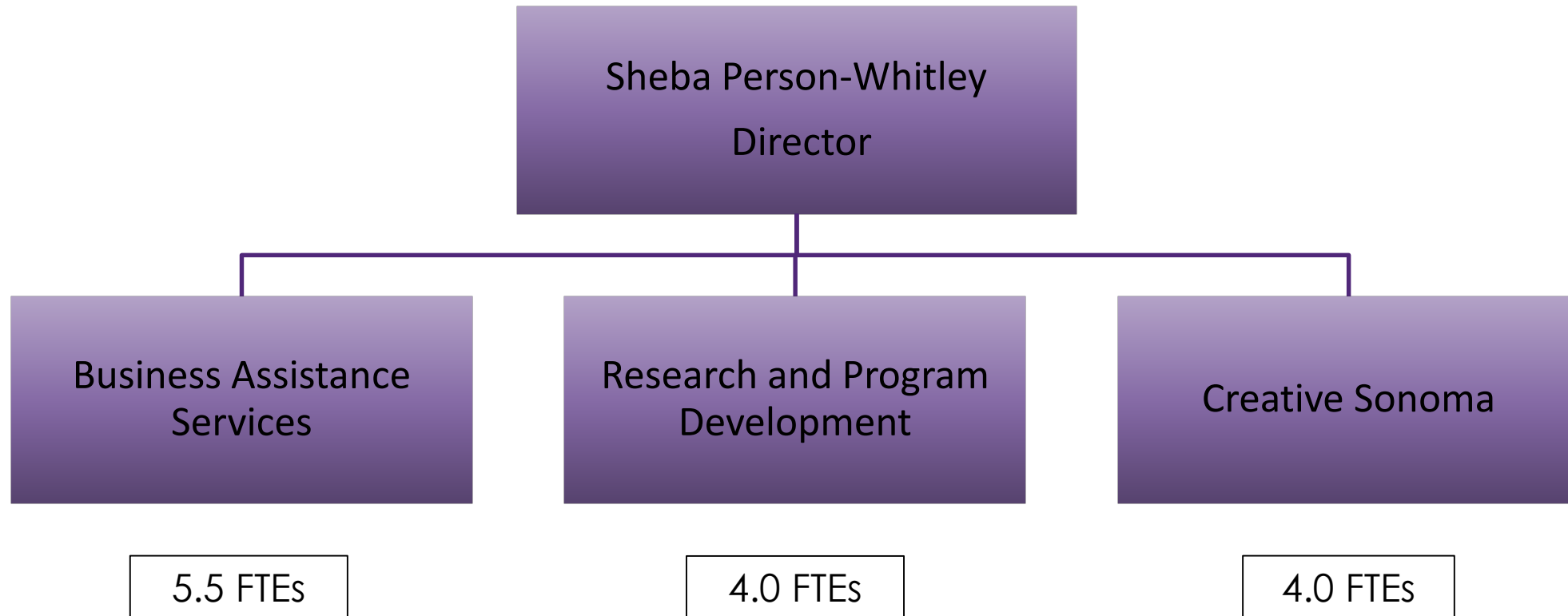
Department Overview

FY 2019-20 ADOPTED: \$7,109,086

FY 2020-21 RECOMMENDED + SUPP: \$6,227,904

NET CHANGE : -\$881,182

TOTAL FTE: 13.5



Departmental Funding Sources Impacts

Funding Source	Rcmd. Budget	Adjusted Amt.	% of Source
General Fund Contribution	\$0	-\$0	-%0
State, Federal & Other Funds	\$202,625	-\$0	-%0
Fees & Charges for Services	\$0	-\$0	-%0
Other Departmental Revenue	\$14,200	-\$0	-%0
Departmental Fund Balance	\$5,616,967	-\$967,000	-17.2%
Internal Reimbursements & Transfers	\$394,112	-\$0	-%0
Total Sources	\$6,227,904	-\$967,000	-15.5%



Summary of Proposed Adjustments Aligning to Reduced Estimated Sources

Description	Amount	FTE Allocation	Possible FTE Layoff
Administrative Aide	-\$94,198	1.0	1.0
Department Program Managers	-\$383,225	3.0	2.0
Contracted Services	-\$166,707		
Community Grants	-\$150,000		
Leased Office Space	-\$83,968		
Extra Help	-\$19,670		
Other Operating Costs	-\$69,732		
Total	-\$967,500	4.0	3.0



Summary of Impacts of Proposed Adjustments

Loss of any positions will greatly impact EDB's ability to deliver programs and services to the business community.

- Administrative Aide
 - Significantly reduces ability to update EDB's webpage, including COVID resources
 - Program marketing and events reduced and/or discontinued
- Program Managers
 - Inability to facilitate and ensure COVID-19 recovery, as well as related task forces, recovery plans, etc. Limited ongoing deliver technical assistance for regulatory requirements, permitting, access to capital, and workforce issues.
 - Significant impact to COVID recovery efforts, business retention and opportunities for expansion of existing businesses
 - Reduced ability to identify and respond to workforce needs



Summary of Impacts of Proposed Adjustments

- Reduced Contracted Services
 - Small business assistance
 - Detailed analysis of major events and disasters
 - Foster and implement new programs
- Elimination of Community Grants
 - Eliminates funding for Summer Arts Youth Program, Arts Education Innovation, and Pop Up Creativity grants
 - Negative impact to local community
- Leased Space
 - Office would remain open to the public but with limited staff presence, causing some services to be by appointment only
- Elimination of Travel & Training

