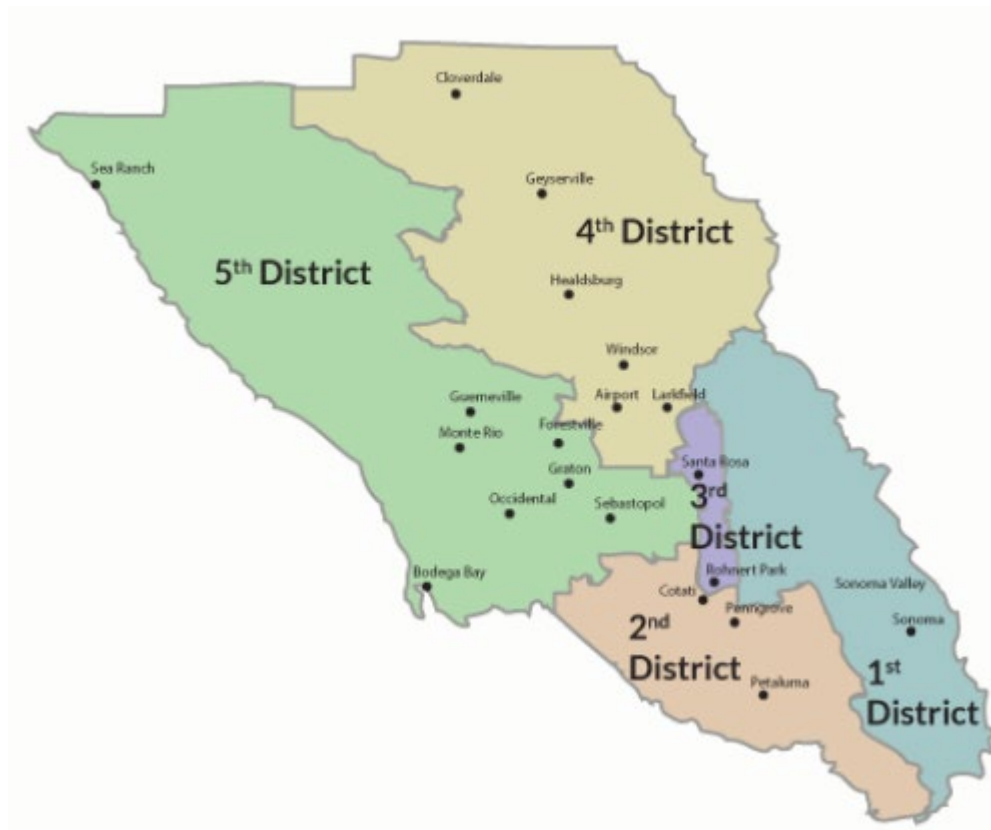


Small Water System Challenges in Sonoma County

Janice Oakley and Michelle Frederick

State Water Resources Control Board's
Division of Drinking Water



- Sonoma County has approximately 440 public water systems.
- 96% of these public water systems serve less than 500 connections. 78% serve less than 100 connections.
- Distributed throughout Sonoma

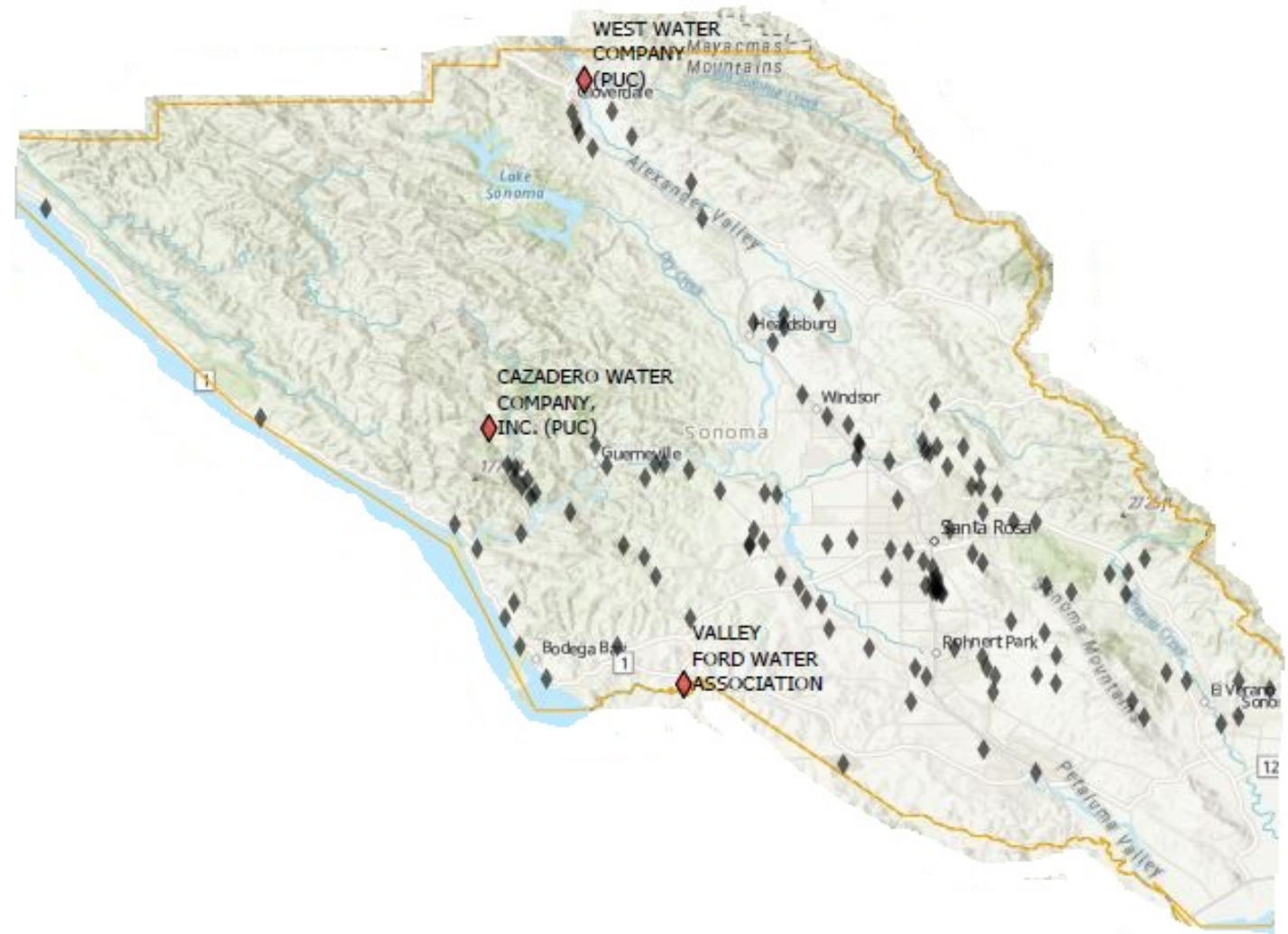
Human Right to Water – Sonoma County

Variations in Water Systems Across the State

County	Total Number of Public Water Systems*
Sonoma	431
Fresno	351
Kern	345
San Bernardino	332
Tulare	327
San Joaquin	317
Monterey	309
Los Angeles	298
Riverside	213
Madera	206
Alameda	27
Modoc	14
San Francisco	8

**90% of Violations Statewide Occur in Water
Systems Serving Less than 500 connections**

Community Water Systems in Sonoma County



West Water Company Deficiencies

- **Physical Condition/Deficiencies of the System**
 - Physical condition of well
 - Lack of adequate storage
 - Galvanized pipe has been in the ground going on 70 years
 - Metering?
 - Lack of Water Rights
- **Potentially serious water quality problem**
 - Coliform bacteria
 - E. coli positive result in Feb 2019
- **Current ownership limitations**
- **Violations**
 - Possible cross connections with unpermitted sources at homes.



Emergency
Funding



Administrator



Mandatory or
Voluntary
Consolidation



Enforcement

Tools for Achieving Compliance



Emergency
Funding



Administrator



Mandatory or
Voluntary
Consolidation



Enforcement

Tools for Achieving Compliance



Section 116686 of the California Health and Safety Code

Authority to appoint an Administrator



Services Provided

Administrative

Technical

Operational

Legal

Managerial

What is an Administrator Project?

Process to Designate a Public Water System

1. Notice water system
2. Public meeting
3. Share proposed administrator's qualifications with community
4. Administrator order



Conflicts of Interest



Compliance of Laws and Regulations



Post administrator drinking water service plan



Community Accountability and Engagement Plan



Public Access to Records

Full-scope administrator

Limited scope administrator

Obligations of Administrators

Minimum Qualifications

Administrators must have:

- Necessary licenses and certifications or the ability to contract out services
- Sufficient experience for scope of appointment
- Significant technical, managerial, and financial capacity

Costs

The State Water Board will fund:

- Salary and benefits of Administrator
- Physical working space costs, if needed
- Other appropriate expenses

The State Water Board may provide technical assistance and funding for construction and planning – Administrator applies on behalf of system

Water system is responsible for all ordinary costs





Emergency
Funding



Administrator



Mandatory or
Voluntary
Consolidation



Enforcement

Tools for Achieving Compliance



**Section 116682 of the California
Health and Safety Code**

Authority for Mandatory Consolidation



Applicable to Water Systems:

Disadvantaged Communities with

Failing Water Quality or Quantity

Starts with 6-month voluntary negotiation period

What is Mandatory Consolidation?

Liability Protection for Mandatory Consolidation

Health and Safety Code Section 116682 (g)

“...the consolidated water system shall not increase charges on existing customers of the receiving water system solely as a consequence of the consolidation or extension of service unless the customers receive a corresponding benefit.”

Health and Safety Code Section 116682 (e)

“Compensate the owners of a privately owned subsumed water system for the fair market value of the system”

Health and Safety Code Section 116684, titled “Consolidation Liability Exemptions”

Provides additional consolidation liability protection.

West Water Company Mandatory Consolidation

- Emergency Response
- Sonoma County, as administrator, would oversee project to replace the water system infrastructure via submittal of a funding application to the State Water Board
- State Water Board to fund administrator costs
- Consolidation with the County for long-term sustainability



Questions?