



Road Map to Reopening

May 18, 2020

Barbie Robinson,

Director, Sonoma County, Department of Health
Services & Interim Executive Director, Community
Development Commission

Dr. Sundari Mase

Sonoma County Health Officer



sonoma county
DEPARTMENT OF HEALTH SERVICES

Road to Reopening

- Governor's Reopening Phases and Health Crisis Accelerating Phase 2
- Sonoma County Plan for Accelerated Stage 2
- Containment Strategies
- Containment Plan
- Reopening Risks



California's Resilience Roadmap: Stage 2



STAGE 1: Safety and preparedness

Make workplaces
safe for our
essential workers.



STAGE 2: Lower-risk workplaces

Gradually reopen
retail (curbside
only),
manufacturing &
logistics. Later,
relax retail
restrictions,
adapt & reopen
schools, child
care, offices &
limited
hospitality,
personal services.



STAGE 3: Higher-risk workplaces

Adapt and reopen
movie theaters,
religious services,
& more
personal & hospit
ality services.



STAGE 4: End of Stay Home Order

Reopen areas of
highest risk: e.g.
Concerts,
conventions,
sports arenas.

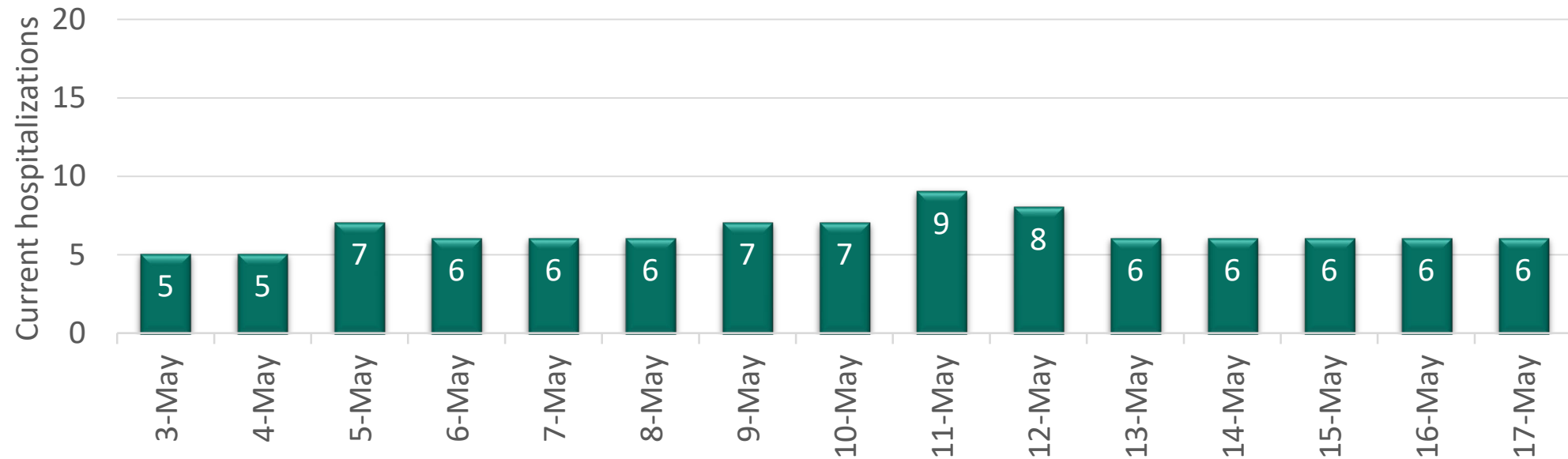
Stage 2 Reopening Variance Process

- Attestation by Public Health Officer of California Department of Public Health (CDPH) Criteria
- Letter of Support from Board of Supervisors and others
- Consultation with CDPH
- If approved, posted on CDPH Website

Governor's Readiness Criteria

Epidemiologic stability of COVID-19

-No more than 20 total confirmed COVID-19 patients hospitalized on any single day over the past 14 days.



Governor's Readiness Criteria

Epidemiologic stability of COVID-19

-Testing positivity over the past 7 days of <8%

Date	May 7	May 8	May 9	May 10	May 11	May 12	May 13
% Positive	2%	1%	1%	1%	2%	1%	6%
Number of positive tests	14	5	1	2	12	9	11
Number of tests conducted	875	754	117	381	555	678	175

Governor's Readiness Criteria

Protection of Stage 1 essential workers

- Guidance for employers and essential critical infrastructure workplaces on how to structure the physical environment to protect essential workers.
 - *Business Mitigation Plan available from Economic Development Board*
- Availability of supplies (disinfectant, essential protective gear) to protect essential workers.
 - *Under assessment*

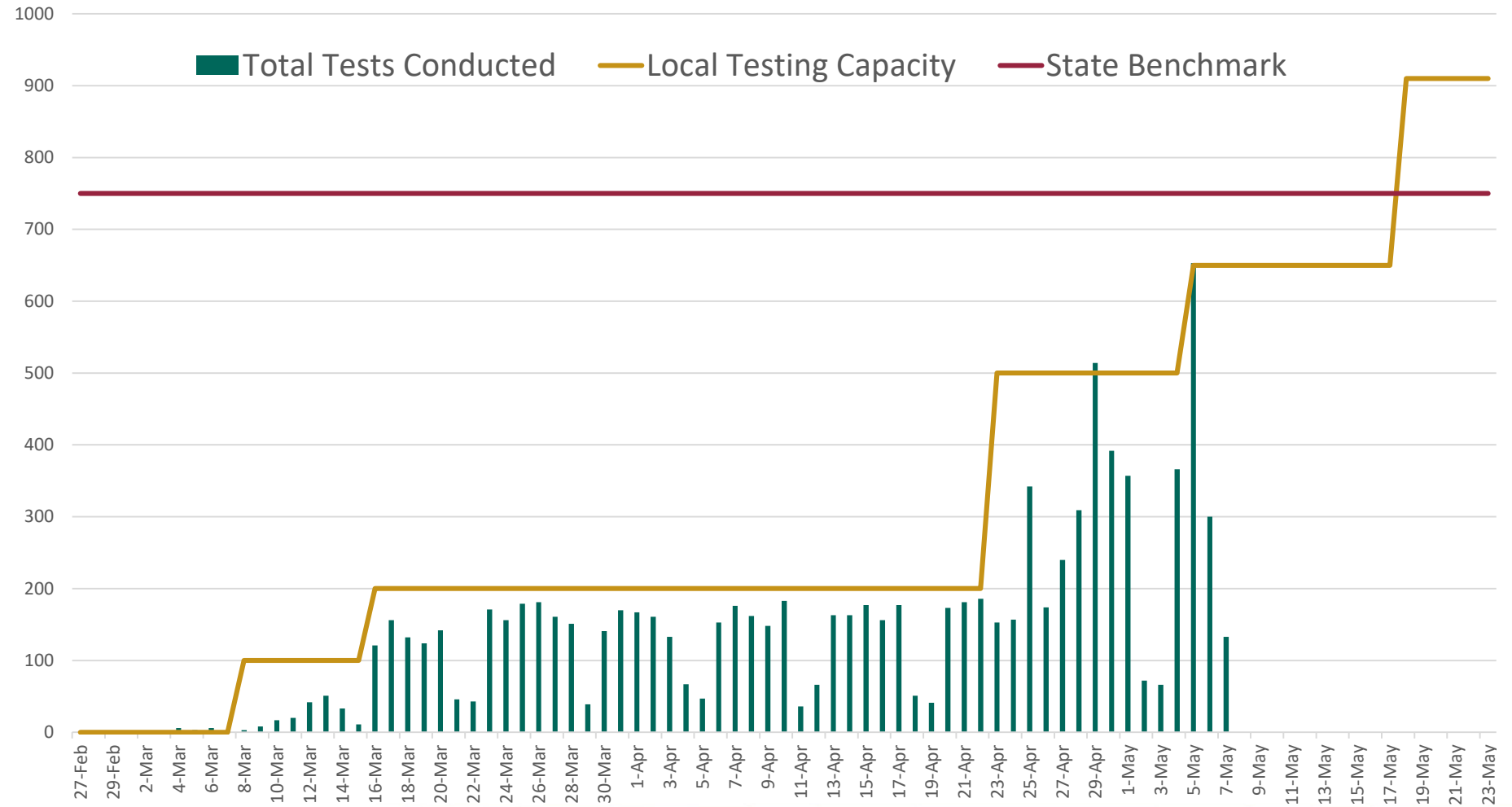
Governor's Readiness Criteria

Testing capacity

- Minimum daily testing volume to test 1.5 per 1,000 residents, which can be met through a combination of testing of symptomatic individuals and targeted surveillance.
- Testing availability for at least 75% of residents, as measured by a specimen collection site within 30 minutes driving time in urban areas, and 60 minutes in rural areas.

Governor's Readiness Criteria

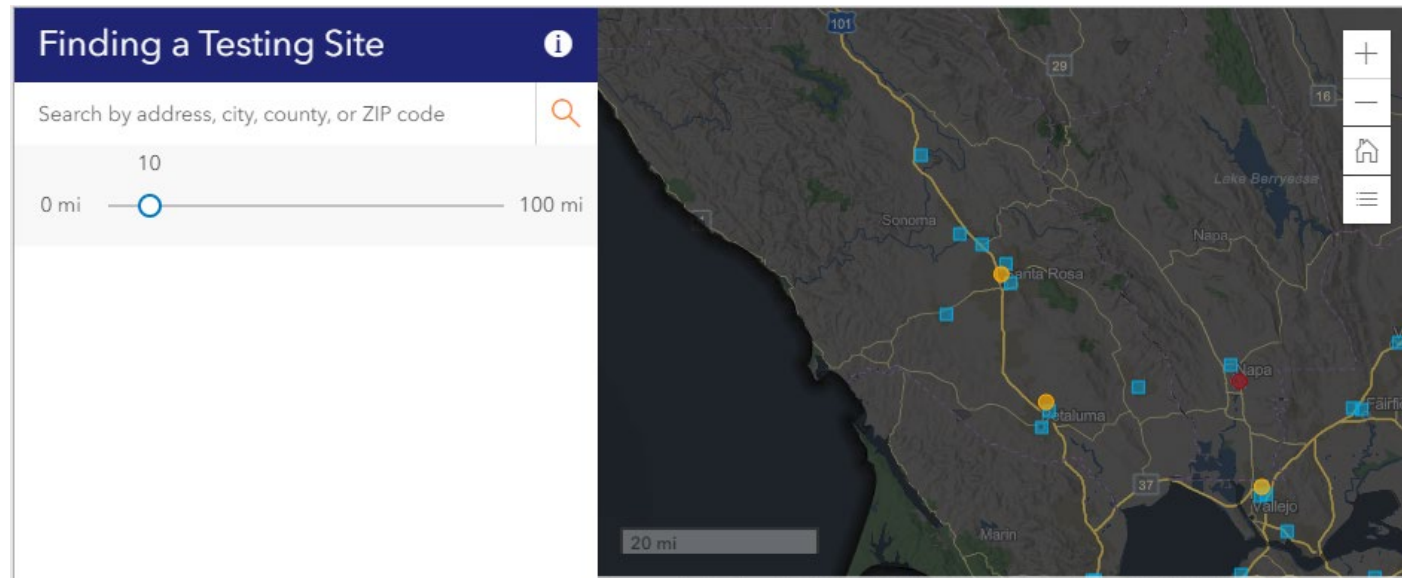
Testing capacity is expanding. On May 18th, OptumServe will double testing capacity, bringing the collective testing capacity to over 900 tests per day.



Governor's Readiness Criteria

Testing Availability

- New navigational site allows public to easily find closest testing site and eligibility information



Governor's Readiness Criteria

Containment capacity

- Sufficient contact tracing. Minimum of 15 staff per 100,000 county population trained and available for contact tracing;
- Availability of temporary housing units to shelter at least 15% of county residents experiencing homelessness in case of an outbreak among this population requiring isolation and quarantine of affected individuals.

Governor's Readiness Criteria

Sufficient Contact Tracing

- Sonoma County needs at least 75 contact tracers
- 70 County staff and volunteers are effectively managing current contact tracing needs, with 100 individuals trained to assist
- Through State training/resources, local non-profit organizations, and County staffing, the County will train up to 200 additional contact tracing personnel and 50 case interviewers as indicated by surge needs.

Governor's Readiness Criteria

Ability to isolate/quarantine 15% of homeless population in event of Outbreak

– Non-Congregate Care Site and Trailers

- 152 rooms for medically vulnerable unsheltered individuals. With single occupancy, these placements would represent 5% of the overall homeless population of 2,951 and 9% of the most medically vulnerable among this population.

– Alternate Care Sites offer Additional Capacity

- 256 isolation/quarantine rooms for individuals with COVID-19 tests pending and 90 placements for COVID 19 positive patients, with ability to surge to 474 beds.

Governor's Readiness Criteria

Hospital Capacity

- Hospital capacity to accommodate a minimum surge of 35% due to COVID-19 cases in addition to providing usual care for non COVID-19 patients.
- Hospital facilities have a robust plan to protect the hospital workforce, both clinical and nonclinical, with PPE.

Governor's Readiness Criteria

Hospital Surge Capacity of at least 35%

- Local hospitals have the internal capacity to expand staffed beds by 37.3%.
 - Sonoma County hospitals report 707 licensed beds (67 of which are licensed ICU beds) and the ability to add 264 beds through surge.
 - County Alternate Care Sites offer additional surge capacity of up to 474 beds (324 isolation/quarantine rooms for individuals with COVID-19 tests pending and 150 placements for COVID 19 positive patients)

Governor's Readiness Criteria

PPE Availability

County receives daily report of hospital PPE supplies and is monitoring PPE burn rates to inform PPE stock needs.

PPE Description	Total PPE Requested by Op Area	Total <u>Individual Units</u> Shipped
N95 Masks – Adult	101,814	111,456
N95 Masks – Small	16,670	21,960
Surgical / Procedure Masks	166,710	165,150
Safety Glasses	2,564	3,792
Safety Goggles	5,627	1,380
Face Shields	3,298	4,867
Surgical Gowns (All Sizes)	28,564	8,578
Tyvek Suits / Coveralls (All Sizes)	21,706	22,804
Nitrile Gloves (All Sizes)	456,048	281,236
Infrared Thermometers	268	98
Booties	-	2,900
Hand Sanitizer	712	4,535
TOTAL	803,981	628,856

Governor's Readiness Criteria

Vulnerable Populations

- Plan to prevent and mitigate COVID-19 infections in skilled nursing facilities
 - Under development
- Skilled nursing facilities (SNF) have >14 day supply of PPE on hand for staff, with established process for ongoing procurement from non-state supply chains.
 - Still under assessment



Governor's Readiness Criteria

Surveillance of Vulnerable Populations

- Enhanced surveillance testing, PH Disease Control as of 5.7.2

Population under surveillance	Tests Completed
Skilled Nursing Facility/Post Acute Hosp	579
Homeless	84
Jail/Juvenile Hall	129
Residential Care Facilities/Board and Care/ Group	146
Hospice	35
TOTAL	973

Governor's Readiness Criteria

Monitoring COVID-19 Among Older Adults

- Adults 65 years and older are currently under-represented in Sonoma County cases

Age_Category	Cases	% Cases	% Population
0-17 yrs	31	11.4%	19.7%
18-49 yrs	140	51.5%	39.7%
50-64 yrs	62	22.8%	21.0%
65+ yrs	39	14.3%	19.6%
Total	272	100%	100%

Governor's Readiness Criteria

Focused testing opportunities, health education, and access to resources for Latinx population (Four events in May)

All Cases associated with COVID-19 by Race and Ethnicity, as of 5.10.20

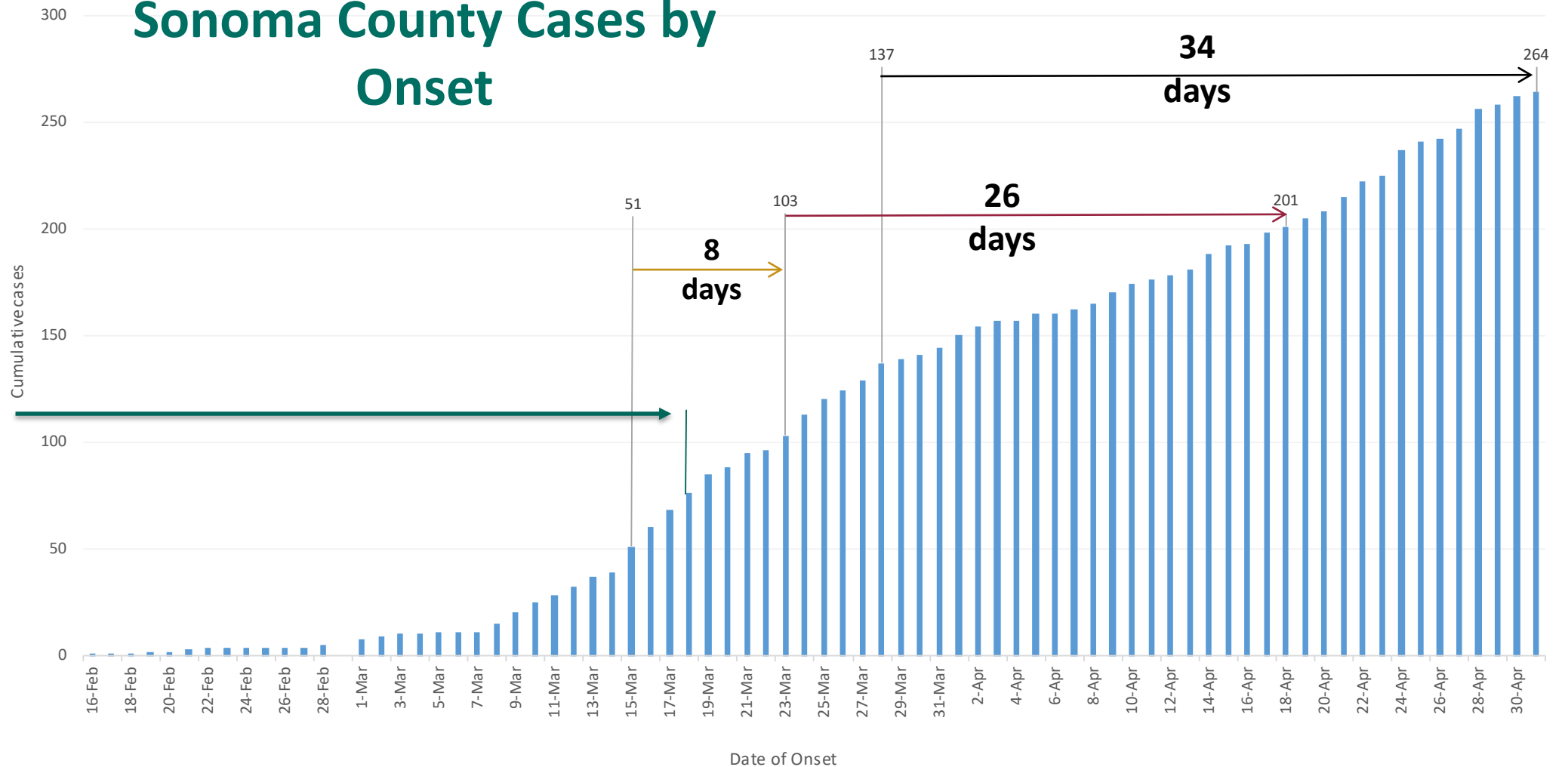
Race/ethnicity	Number of cases	Percent of cases	Percent of population
Hispanic/Latino	139	58.9%	27.2%
White, non-Hispanic	77	32.6%	64.7%
Asian/Pacific Islander, non-Hispanic	13	5.5%	5.1%
Other^, non-Hispanic	7	3.0%	3.0%

Cases: 309 total, 73 (24%) missing race/ethnicity

^Black/African American, American Indian/Alaska Native, and Other

Doubling Time of Sonoma County Cases by Onset

Shelter in Place Order



As of 5.10.2020; Missing 27 dates of onset – new cases identified in the last 3 days (likely onset date 4/28 or later)

Sonoma County Plan for Accelerated Stage 2 Opening

- If required approval is obtained from CDPH - proposed immediate openings:
 - Restaurants - outdoor seating only
 - Childcare expanded to include summer day camps
 - Drive-In/Drive-Through religious and ceremonial services
 - Wineries/Breweries/Tasting Rooms - Outdoor tastings only
- All must comply with state and local guidance

Sonoma County Plan for Accelerated Stage 2 Opening

Future openings when deemed appropriate by Public Health Officer:

- Dine-In Restaurants
- Destination Retail
- Schools with Modifications

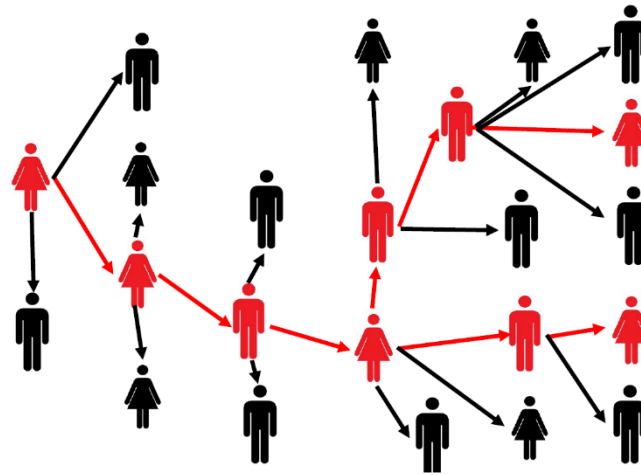


Containment Strategies

- Reopening business will cause additional virus spread
- Vulnerable populations at risk of serious outcomes
- On-going Assessment of Indicators for Corrective Action
 - Rate of cases for 10,000
 - Case fatality rate
 - Hospital Bed/ICU capacity
 - PPE availability

Containment Plan

- Aggressive contact tracing
- Widespread availability of testing
- Tightening of Shelter-In-Place if indicators/data dictate



Questions