



# COVID-19 Threat, Response, Reopening, and Recovery Update

## Sonoma County Board of Supervisors

May 18, 2020

# Discussion Points / Presenters

## Health Update

- Dr. Sundari Mase      Public Health Officer, Department of Health Services
- Barbie Robinson      Director, Department of Health Services & Interim Director, CDC

## Business Reopening and Economic Recovery Update

- Sheba Person-Whitley      Executive Director, Economic Development Board

## Emergency Management

- Chris Godley      Director, Department of Emergency Management
- Nancy Brown, PhD      Food Resources Task Force Co-Leader
- Melanie Dodson      Executive Director, Sonoma Community Child Care Council





# Road Map to Reopening

**May 18, 2020**

**Barbie Robinson,**

Director, Sonoma County, Department of Health  
Services & Interim Executive Director, Community  
Development Commission

**Dr. Sundari Mase**

Sonoma County Health Officer



**sonoma county**  
DEPARTMENT OF HEALTH SERVICES

# *Road to Reopening*

- Governor's Reopening Phases and Health Criteria for Accelerating Phase 2
- Sonoma County Plan for Accelerated Stage 2 Opening
- Containment Strategies
- Containment Plan
- Reopening Risks



# California's Resilience Roadmap: Stage 2



## **STAGE 1: Safety and preparedness**

Make workplaces  
safe for our  
essential workers.



## **STAGE 2: Lower-risk workplaces**

Gradually reopen  
retail (curbside  
only),  
manufacturing &  
logistics. Later,  
relax retail  
restrictions,  
adapt & reopen  
schools, child  
care, offices &  
limited  
hospitality,  
personal services.



## **STAGE 3: Higher-risk workplaces**

Adapt and reopen  
movie theaters,  
religious services,  
& more  
personal & hospit  
ality services.



## **STAGE 4: End of Stay Home Order**

Reopen areas of  
highest risk: e.g.  
Concerts,  
conventions,  
sports arenas.

## *Stage 2 Reopening Variance Process*

- Attestation by Public Health Officer of California Department of Public Health (CDPH) Criteria
- Letter of Support from Board of Supervisors and others
- Consultation with CDPH
- If approved, posted on CDPH Website

# *Governor's Readiness Criteria*

## Epidemiologic stability of COVID-19

- No more than 1 COVID-19 case per 10,000 in the past 14 days prior to attestation submission date.
  - *2.1 cases per 10,000 residents (76% among close contacts--rate of 0.4/10,000 among community transmissions)*
- No COVID-19 death in the past 14 days prior to attestation submission date
  - *Two deaths recorded in past 14 days*



# *Governor's Readiness Criteria*

## Protection of Stage 1 essential workers

- Guidance for employers and essential critical infrastructure workplaces on how to structure the physical environment to protect essential workers.
  - *Business Mitigation Plan available from Economic Development Board*
- Availability of supplies (disinfectant, essential protective gear) to protect essential workers.
  - *Under assessment*



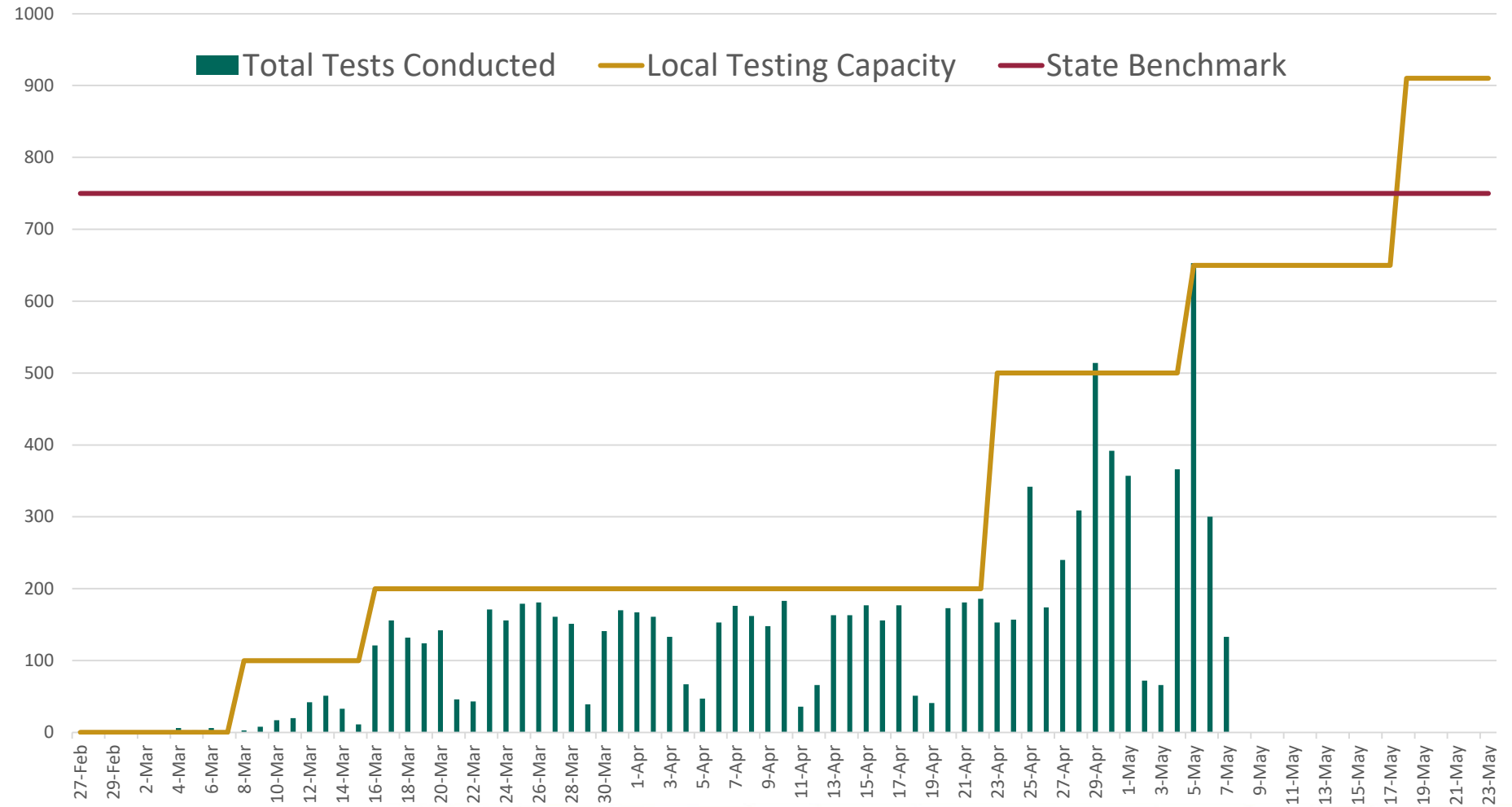
# *Governor's Readiness Criteria*

## Testing capacity

- Minimum daily testing volume to test 1.5 per 1,000 residents, which can be met through a combination of testing of symptomatic individuals and targeted surveillance.
- Testing availability for at least 75% of residents, as measured by a specimen collection site within 30 minutes driving time in urban areas, and 60 minutes in rural areas.

# Governor's Readiness Criteria

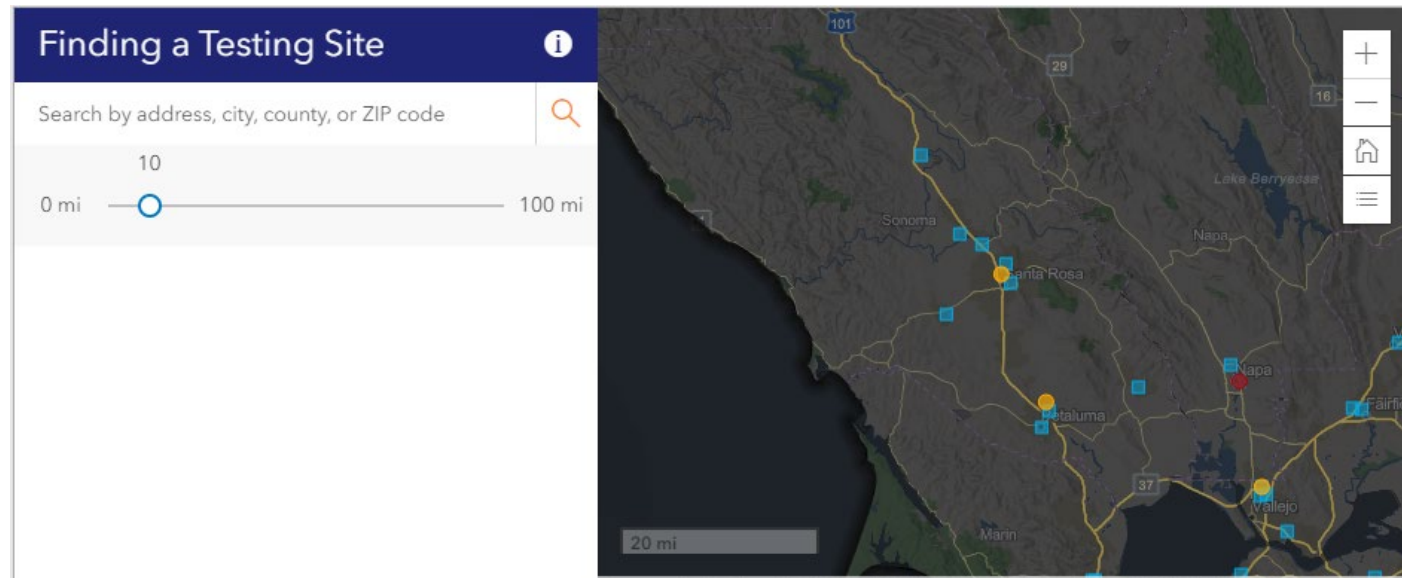
Testing capacity is expanding. On May 18<sup>th</sup>, OptumServe will double testing capacity, bringing the collective testing capacity to over 900 tests per day.



# *Governor's Readiness Criteria*

## Testing Availability

- New navigational site allows public to easily find closest testing site and eligibility information



# *Governor's Readiness Criteria*

## Containment capacity

- Sufficient contact tracing. Minimum of 15 staff per 100,000 county population trained and available for contact tracing;
- Availability of temporary housing units to shelter at least 15% of county residents experiencing homelessness in case of an outbreak among this population requiring isolation and quarantine of affected individuals.

# *Governor's Readiness Criteria*

## Sufficient Contact Tracing

- Sonoma County needs at least 75 contact tracers
- 70 County staff and volunteers are effectively managing current contact tracing needs, with 100 individuals trained to assist
- Through State training/resources, local non-profit organizations, and County staffing, the County will train up to 200 additional contact tracing personnel and 50 case interviewers as indicated by surge needs.

# *Governor's Readiness Criteria*

## Ability to isolate/quarantine 15% of homeless population in event of Outbreak

### – Non-Congregate Care Site and Trailers

- 152 rooms for medically vulnerable unsheltered individuals. With single occupancy, these placements would represent 5% of the overall homeless population of 2,951 and 9% of the most medically vulnerable among this population.

### – Alternate Care Sites offer Additional Capacity

- 256 isolation/quarantine rooms for individuals with COVID-19 tests pending and 90 placements for COVID 19 positive patients, with ability to surge to 474 beds.

# *Governor's Readiness Criteria*

## Hospital Capacity

- Hospital capacity to accommodate a minimum surge of 35% due to COVID-19 cases in addition to providing usual care for non COVID-19 patients.
- Hospital facilities have a robust plan to protect the hospital workforce, both clinical and nonclinical, with PPE.



# *Governor's Readiness Criteria*

## Hospital Surge Capacity of at least 35%

- Local hospitals have the internal capacity to expand staffed beds by 37.3%.
  - Sonoma County hospitals report 707 licensed beds (67 of which are licensed ICU beds) and the ability to add 264 beds through surge.
  - County Alternate Care Sites offer additional surge capacity of up to 474 beds (324 isolation/quarantine rooms for individuals with COVID-19 tests pending and 150 placements for COVID 19 positive patients)

# Governor's Readiness Criteria

## PPE Availability

County receives daily report of hospital PPE supplies and is monitoring PPE burn rates to inform PPE stock needs.

PPE Description	Total PPE Requested by Op Area	Total <u>Individual Units</u> Shipped
N95 Masks – Adult	101,814	111,456
N95 Masks – Small	16,670	21,960
Surgical / Procedure Masks	166,710	165,150
Safety Glasses	2,564	3,792
Safety Goggles	5,627	1,380
Face Shields	3,298	4,867
Surgical Gowns (All Sizes)	28,564	8,578
Tyvek Suits / Coveralls (All Sizes)	21,706	22,804
Nitrile Gloves (All Sizes)	456,048	281,236
Infrared Thermometers	268	98
Booties	-	2,900
Hand Sanitizer	712	4,535
TOTAL	803,981	628,856

# *Governor's Readiness Criteria*

## Vulnerable Populations

- Skilled nursing facilities (SNF) have >14 day supply of PPE on hand for staff, with established process for ongoing procurement from non-state supply chains.
- Still under assessment



# *Governor's Readiness Criteria*

## Surveillance of Vulnerable Populations

- Enhanced surveillance testing, PH Disease Control as of 5.7.2

Population under surveillance	Tests Completed
Skilled Nursing Facility/Post Acute Hosp	579
Homeless	84
Jail/Juvenile Hall	129
Residential Care Facilities/Board and Care/ Group	146
Hospice	35
<b>TOTAL</b>	<b>973</b>

# *Governor's Readiness Criteria*

## Monitoring COVID-19 Among Older Adults

- Adults 65 years and older are currently under-represented in Sonoma County cases

Age_Category	Cases	% Cases	% Population
0-17 yrs	31	11.4%	19.7%
18-49 yrs	140	51.5%	39.7%
50-64 yrs	62	22.8%	21.0%
65+ yrs	39	14.3%	19.6%
<b>Total</b>	<b>272</b>	<b>100%</b>	<b>100%</b>

# *Governor's Readiness Criteria*

Focused testing opportunities, health education, and access to resources for Latinx population (Four events in May)

All Cases associated with COVID-19 by Race and Ethnicity, as of 5.10.20

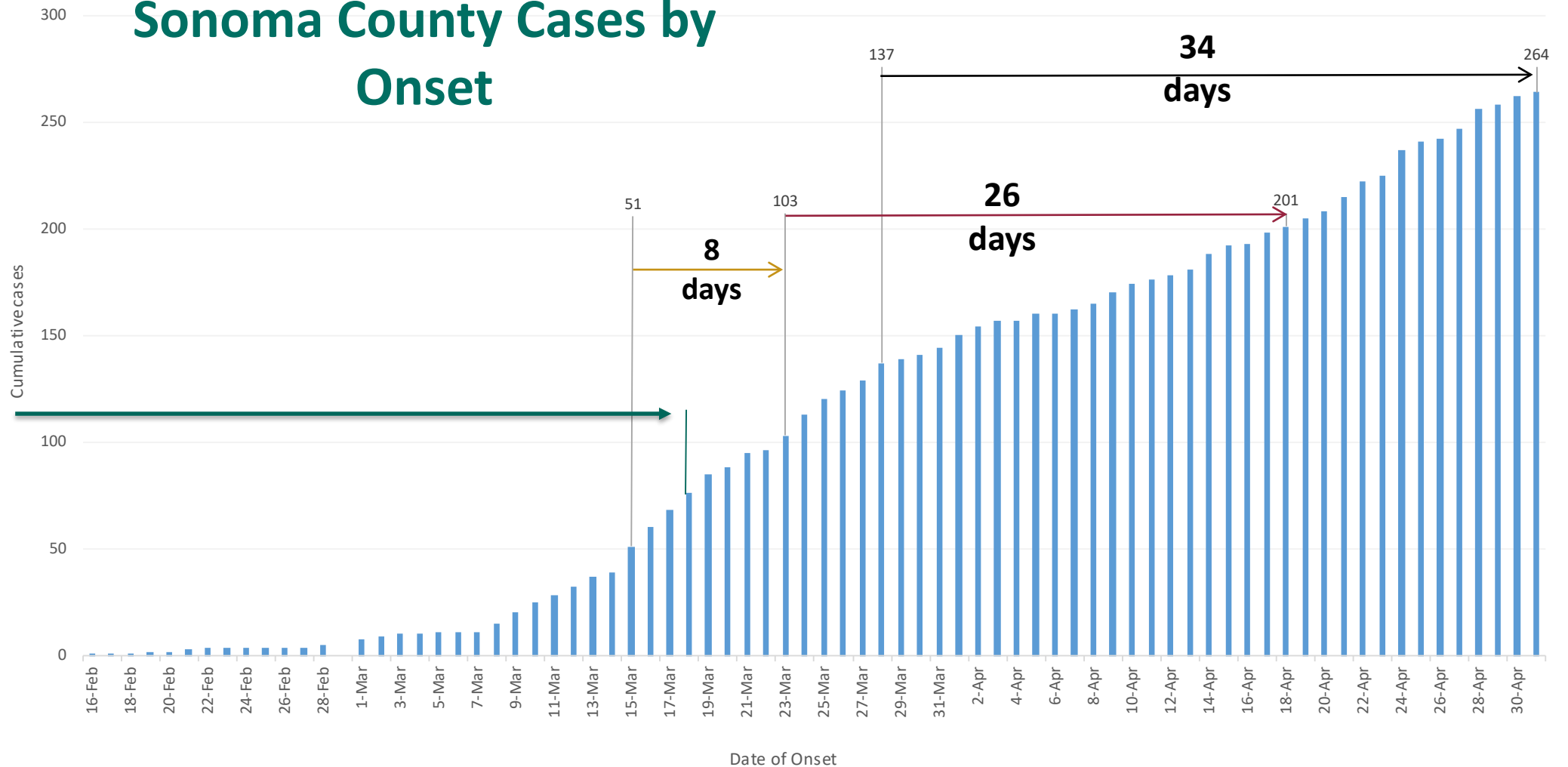
Race/ethnicity	Number of cases	Percent of cases	Percent of population
Hispanic/Latino	139	58.9%	27.2%
White, non-Hispanic	77	32.6%	64.7%
Asian/Pacific Islander, non-Hispanic	13	5.5%	5.1%
Other^, non-Hispanic	7	3.0%	3.0%

Cases: 309 total, 73 (24%) missing race/ethnicity

^Black/African American, American Indian/Alaska Native, and Other

# Doubling Time of Sonoma County Cases by Onset

Shelter in Place Order



As of 5.10.2020; Missing 27 dates of onset – new cases identified in the last 3 days (likely onset date 4/28 or later)



# *Sonoma County Plan for Accelerated Stage 2 Opening*

- If required approval is obtained from CDPH - proposed immediate openings:
  - Restaurants - outdoor seating only
  - Childcare expanded to include summer day camps
  - Drive-In/Drive-Through religious and ceremonial services
  - Wineries/Breweries/Tasting Rooms - Outdoor tastings only
- All must comply with state and local guidance

# *Sonoma County Plan for Accelerated Stage 2 Opening*

Future openings when deemed appropriate by Public Health Officer:

- Dine-In Restaurants
- Destination Retail
- Schools with Modifications

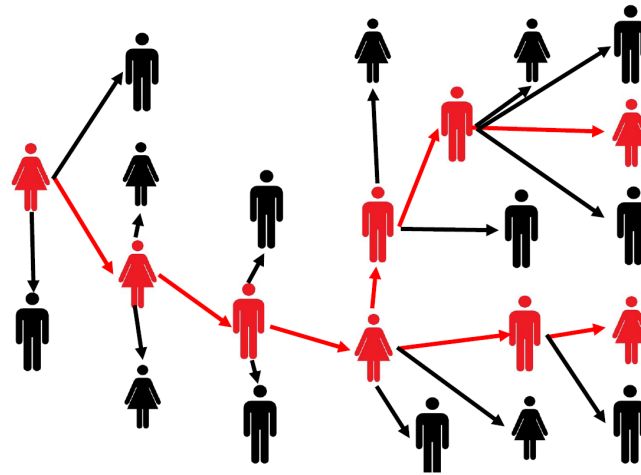


## *Containment Strategies*

- Reopening business will cause additional virus spread
- Vulnerable populations at risk of serious outcomes
- On-going Assessment of Indicators for Corrective Action
  - Rate of cases for 10,000
  - Case fatality rate
  - Hospital Bed/ICU capacity
  - PPE availability

# *Containment Plan*

- Aggressive contact tracing
- Widespread availability of testing
- Tightening of Shelter-In-Place if indicators/data dictate



# Questions

[May]  
-  
[18]  
-  
[2020]

YOUR BUSINESS  
PARTNER



# **EDB COVID-19 Update**

## **Business Reopening and**

## **Economic Recovery**



[www.SonomaEDB.org](http://www.SonomaEDB.org)

# EDB Update COVID-19 Business Reopening and Economic Recovery Update

YOUR BUSINESS  
PARTNER



- Additional Best Management Practices (BMPs) on SoCo Launch
- Additional economic activities allowed
- Long Term Strategic Planning Process



# EDB Update COVID-19 Business Reopening and Economic Recovery Update

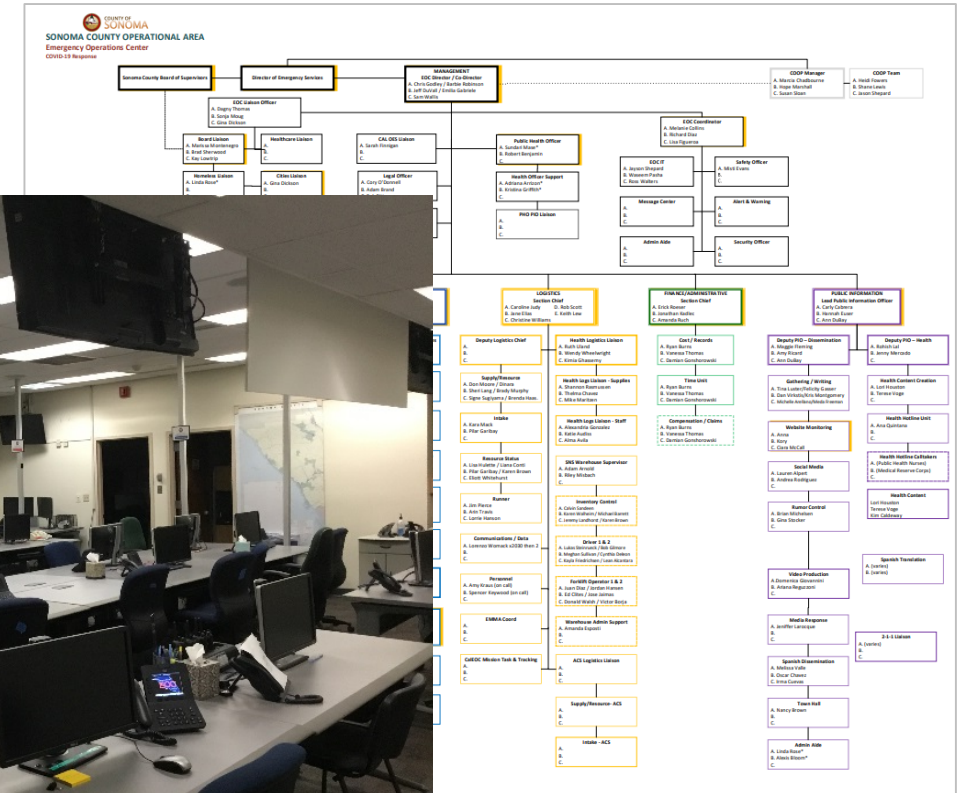
YOUR BUSINESS  
PARTNER



- COVID-19 Business Reopening and Economic Recovery Update
- Update on Business Recovery Task Force Workgroups
- [Development of Best Management Practices](#)
- 
- Full Roadmap to Reopening Plan
- 
- [Self-Certification Website](#)
- Update on Long Term Recovery Planning and Process
- 
- Remarks from Partners:
- Adam Peacock
- Chris Denny

# Emergency Management Update: EOC

- Emergency Operations Center (EOC)
- Transitioned to stand-by or “Warm” Mode
- Resetting
- Operations Review



# Emergency Management Update: Food Resources

- Community-based groups/organizations efforts  
Buy from Food Bank; some partner with restaurants
- Human Services Department - augmented Meals on Wheels:  
Expanded to anyone 65+  
2 months = 62,000 meals
- Food Resources Task Force  
Partnership with 9 non-profits  
Bulk food and prepared meals  
April thru May = \$1M for 287,304 meals



# Emergency Management Update: Food Resources

- Great Plates Delivered Program
  - Senior feeding program and economic stimulus
  - Seniors: 65+ and 60-64 at-risk
  - Delivery of restaurant meals
  - Income: between 200-600% of poverty level
  - Cannot duplicate food assistance benefits
  - Administered by local government
    - Eligibility screening, contracting, accounting
  - Paid for by local government
    - Eligible for FEMA and CDAA reimbursement
  - Very few counties participating



# Emergency Management Update: Childcare

- Childcare in the context of COVID-19
- County Childcare support project







Sonoma County Child Care Update  
May 18, 2020





# CHILD CARE AVAILABILITY DURING COVID-19



**There are 608 licensed child care providers  
in the 4Cs of Sonoma County service area**

\*3% of providers did not respond to status requests and are presumed closed, but not represented in the figure above. These numbers are based on what child care providers have self reported as of 5/14/20.



**834 spaces available for children of essential workers**

**4Cs Resource & Referral is helping to  
connect essential workers with available  
licensed child care options**



**4Cs has supported Sonoma County with more  
than 538 child care referrals since the shelter in  
place began on March 17, 2020.**

**IF YOU NEED HELP FINDING A LICENSED CHILD CARE PROVIDER FOR  
AN ESSENTIAL WORKER PLEASE CONTACT 4Cs OF SONOMA COUNTY**



**CALL US  
NOW**

**707.757.9872**



**ONLINE  
REFERRAL**

**[WWW.SONOMA4CS.ORG/FAMILIES](http://WWW.SONOMA4CS.ORG/FAMILIES)**







# Requirements for Child Care during COVID-19

	Sonoma County	Community Care Licensing
<b>Who can attend?</b>	Essential Workers (5/15/20: All Workers)	Follow Local Order
<b>Group Size</b>	12	10
<b>Group Structure</b>	Separate Rooms/Stable Groups/No Comingling	Separate and stable to the greatest extent possible
<b>Increased Health &amp; Safety</b>	Follow Community Care Licensing	Daily Health Screenings, Temperature Checks, Social Distancing As Possible, Sanitizing Requirements
<b>Masks</b>	Facial Coverings	Masks for older children when sick if they agree. (CAL-OSHA)
<b>Other</b>		Allows "pop up" child care & waivers for local flexibility

Child Care Providers are directed to follow the "stricter" order

Many questions remain for "non licensed programs" and summer camps

# Emergency Child Care for Health Care Workers

## Began Monday, March 23, 2020

<b>Phase 1:</b> March 23 – April 7 <sup>th</sup>	50 spaces	\$125/day	\$ 63,550*
<b>Phase 2:</b> April 8 <sup>th</sup> – May 1 <sup>st</sup>	87 spaces	\$ 95/day	\$137,000*
<b>Phase 3:</b> May 4 <sup>th</sup> – May 29 <sup>th</sup>	Waiting for direction		

\* Includes portions paid by First 5

**Costs to date: \$205,000** (including administration)

### **Employers:**

- Sutter Hospital & SPMF
- Kaiser Hospital & Kaiser Foundation
- St Josephs (Memorial)
- Aurora
- Santa Rosa Health Centers
- West County Health Centers
- Alliance Windsor & Healdsburg (own site)
- Sonoma Valley Health Center
- Petaluma Health Center
- Planned Parenthood

**Providers:** Selected based on location, ability to serve school age, open status/readiness and those that could serve multiple ages





# Sonoma County Emergency Child Care Program Success

March 23rd – May 1st

**80+** Children from High Risk Families served at  
**8** different Child Care Programs by  
**30** Teachers for over 30 days representing  
**366** Child days of enrollment

***0 Teacher Cases of COVID-19***  
***0 Child Cases of COVID-19***

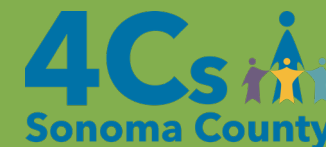
*Note: 214 additional Child Care Programs  
open in Sonoma County during this time  
period with no known cases of COVID-19*





## **Emergency Child Care – All Essential Workers** **4Cs Alternative Payment Program**

- Governor's Executive Order – 4/4/20 identified \$50M statewide for additional state child care vouchers through June 30, 2020
- CA Department of Education, Early Learning & Care Division, CA Alternative Payment Program (CAPP)
- Utilizing 4Cs existing CAPP funding & augmentation received 4/17/20
- Up to 200 spaces immediately available
- Possible additional 100 spaces (depending on funding)
- Families funded by County Emergency Child Care were rolled into CAPP as of May 4<sup>th</sup>



## 4Cs Emergency Child Care Stats

April 21st – May 15th

- 213 Applications Received
- 190 Approved/Pending (282 children)
- 538 Child Care Referrals (since 3/17)

### **Essential Workers:**

Critical Infrastructure (12%)

Manufacturing (1%)

Emergency Services (4%)

Food & Agriculture (10%)

Child Care/Education (2%)

Health Care (37%)

State/Government (5%)

Energy (1%)

Transportation (1%)



## **Ongoing Challenges (short- to longer term)**

- ☐ Supplies (no-touch thermometers, sanitizer, bleach)
- ☐ Workforce Availability
- ☐ Lower revenues due to part-time attendance
- ☐ Increased costs (janitorial, staff:child ratio )
- ☐ Safety – workforce/children
- ☐ School Closures/Summer Camp Closures
- ☐ Capacity Issues      (operating at 45%)
- ☐ School partial re-opening impacts
- ☐ Industry Sustainability (small groups, fixed costs)

## **Recommendations for Local & State Child Care Advocacy**

1. Consistent and Maximized Group sizes (County Order & CCL)
2. Modify County Order - ease separation restrictions
3. Support Local Essential Workforce Vouchers by Utilizing Existing County Child Care Contract to cover parent costs for 275 children (supporting parents and providers)

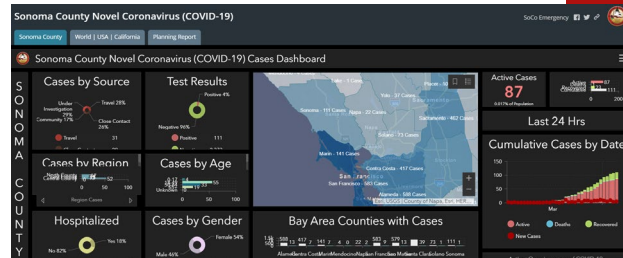




Melanie Dodson  
Executive Director  
[mdodson@sonoma4cs.org](mailto:mdodson@sonoma4cs.org)



# Emergency Management Update: Public Information



## STAY SAFE SONOMA COUNTY!

HELP US STOP THE SPREAD OF CORONAVIRUS

**STAY HOME**

Stay home unless you need to go out to complete essential activities like: live buying groceries, medical care, or if you are considered an essential worker.

If it is necessary to leave your home to perform an essential task, such as purchasing groceries, only OMC personnel should go.

**WASH YOUR HANDS OFTEN**

Wash hands frequently with soap and water for at least 20 seconds, or use a hand sanitizer that contains at least 60% alcohol.

Avoid touching your face with unwashed hands.

**AVOID CLOSE CONTACT**

Maintain a distance of at least 6 feet from yourself and others when away from home.

Avoid close contact with people who are sick.

**COVER AND CLEAN**

Cover your mouth and nose with a tissue when you cough or sneeze or use the inside of your elbow.

Clean and disinfect frequently touched objects.

**NEED ASSISTANCE?**

Call 2-4-1-1 or visit [www.SonomaCountyEmergency.org](http://www.SonomaCountyEmergency.org)

## SoCo Emergency

Prepare Emergency Recover Stay Informed

### Información acerca del nuevo coronavirus

[In English](#)

May 11, 2020 9:48 AM

#### Casos de coronavirus en el Condado de Sonoma a simple vista

	Totales	Activos	Recuperado	Muertes	Pruebas
Cuentos actual de casos	309	137	168	4	9,605
Cambio en las últimas 24 horas	0	-1	0	+1	+182

**Centro de asistencia local virtual (VLAC)**

Centro de asistencia local virtual (VLAC) según sus reglas en inglés. El centro de asistencia local virtual es una lista de recursos de agencias de gobierno y servicios de apoyo para ayudar a los residentes afectados por COVID-19.

**2-1-1: del condado de Sonoma: Conéctese, Consiga ayuda.**

Si tiene preguntas o algo le preocupa, puede comunicarse al 2-1-1 del condado de Sonoma llamando al 2-1-1 o enviando un mensaje de texto con su código postal al 800-211 para hablar con alguien o enviar mensajes de texto, disponible las 24 horas al día. También puede enviar un mensaje de texto con "COVID19" al 211211 para obtener información y recursos organizados.

**El condado de Sonoma responde al coronavirus**

El Condado de Sonoma ha declarado una emergencia local para responder al COVID-19, comúnmente conocido como coronavirus, en nuestra comunidad.

Hemos activado nuestro Centro de Operaciones de Emergencia y estamos trabajando estrechamente con socios locales, estatales y federales para proteger la salud pública y detener la propagación de este virus.

**Apoyo y asistencia**

**Línea de apoyo para la salud mental**

Lláme al (707) 545-2022 para recibir apoyo emocional y gratuito. Usted o alguien que conoce experimenta estrés emocional o ansiedad durante la pandemia de COVID-19. Esta línea de apoyo está disponible los 7 días de la semana de 9 am a 7 pm. La interpretación telefónica está disponible para otros idiomas.

**Manténgase informado. Regístrese para recibir alertas.**

En un desastre, nunca hay suficientes maneras de recibir una alerta que pueda salvar sus vidas. Escuche esas alertas. El Condado de Sonoma usará múltiples formas de comunicarse con usted si existe una amenaza para su vida o propiedad. Regístrese en SonomaAlerta. Haga clic para recibir más información.

## Q&A WITH BERT WHITAKER

**DIRECTOR OF SONOMA COUNTY REGIONAL PARKS**



# Questions / Discussion

