



# COVID-19 Threat, Response, Reopening, and Recovery Update

## Sonoma County Board of Supervisors

May 12, 2020

# Discussion Points / Presenters

## Road Map to Reopening

- Dr. Sundari Mase                      Public Health Officer, Department of Health Services
- Barbie Robinson                      Director, Department of Health Services & Interim Director, CDC

## Business Reopening and Economic Recovery Update

- Sheba Person-Whitley              Executive Director, Economic Development Board
- Adam Peacock                      Chair, Rebuilding Our Communities, Sonoma County
- Chris Denny                          Founder, Engine is Red
- Christel Querijero                  Interim Deputy County Administrator

## Parks Reopening Efforts

- Bert Whitaker                      Director, Regional Parks

## Emergency Management

- Chris Godley                      Director, Department of Emergency Management
- Nancy Brown, PhD                  Food Resources Task Force Co-Leader





# Road Map to Reopening

May 12, 2020

- Barbie Robinson, Director, Sonoma County, Department of Health Services & Interim Executive Director, Community Development Commission
- Dr. Sundari Mase, Sonoma County Health Officer



**sonoma county**  
DEPARTMENT OF HEALTH SERVICES

# *Road to Reopening*

- Governor's Reopening Phase 2 for Accelerating Phase 2
- Reopening Risks
- Data Regarding Impacts
- PHO Orders and Revisions
- Elective Procedures Guidance
- Testing / Contact tracing
- Alternate Care Site (ACS)/ Non-Congregate Site (NCS)



# *Governor's Roadmap to Modify the Stay-At-Home Order*



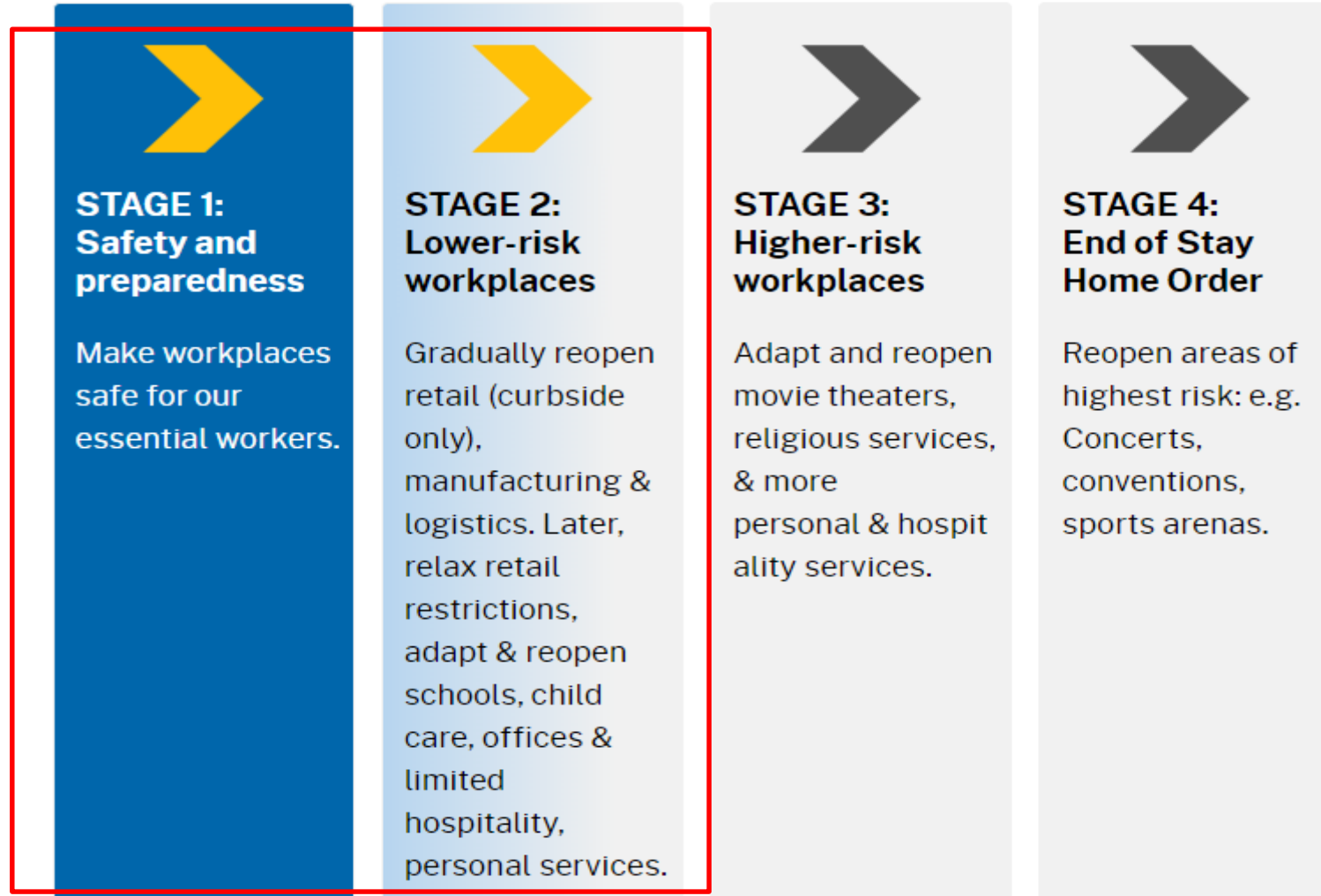
# *Governor's 6 Indicators*

## **6 Indicators for Modifying Stay-at-Home Order**

- Ability to test, contact trace, isolate, and support the exposed
- Ability to protect those at high risk for COVID-19
- Surge capacity for hospital and health systems
- Therapeutic development to meet the demand
- Ability of businesses, schools, and childcare facilities to support physical distancing
- Determination of when to reinstitute measures like Stay-At-Home



# CA's Resilience Roadmap: Stage 2



## *CA's Resilience Roadmap: Stage 2*

The State is setting up a process to allow counties to accelerate thru Stage 2 by allowing the Local Health Officer to provide an attestation that the County meets certain parameters.



## *Key State Indicators to Move to Stage 2*

- Hospitalization and ICU trends stable.
- Hospital surge capacity to meet demand.
- Sufficient PPE supply to meet demand.
- Sufficient testing capacity to meet demand.
- Contact tracing capacity statewide.

# *Governor's Readiness Criteria*

## **Epidemiologic stability of COVID-19**

- No more than 1 COVID-19 case per 10,000 in the past 14 days prior to attestation submission date.
- ● *1.5 cases per 10,000 residents (76 cases reported between 4/24/2020 and 5/7/2020)*
- No COVID-19 death in the past 14 days prior to attestation submission date
- ● *Two deaths recorded in past 14 days*

# *Governor's Readiness Criteria*

## **Protection of Stage 1 essential workers**

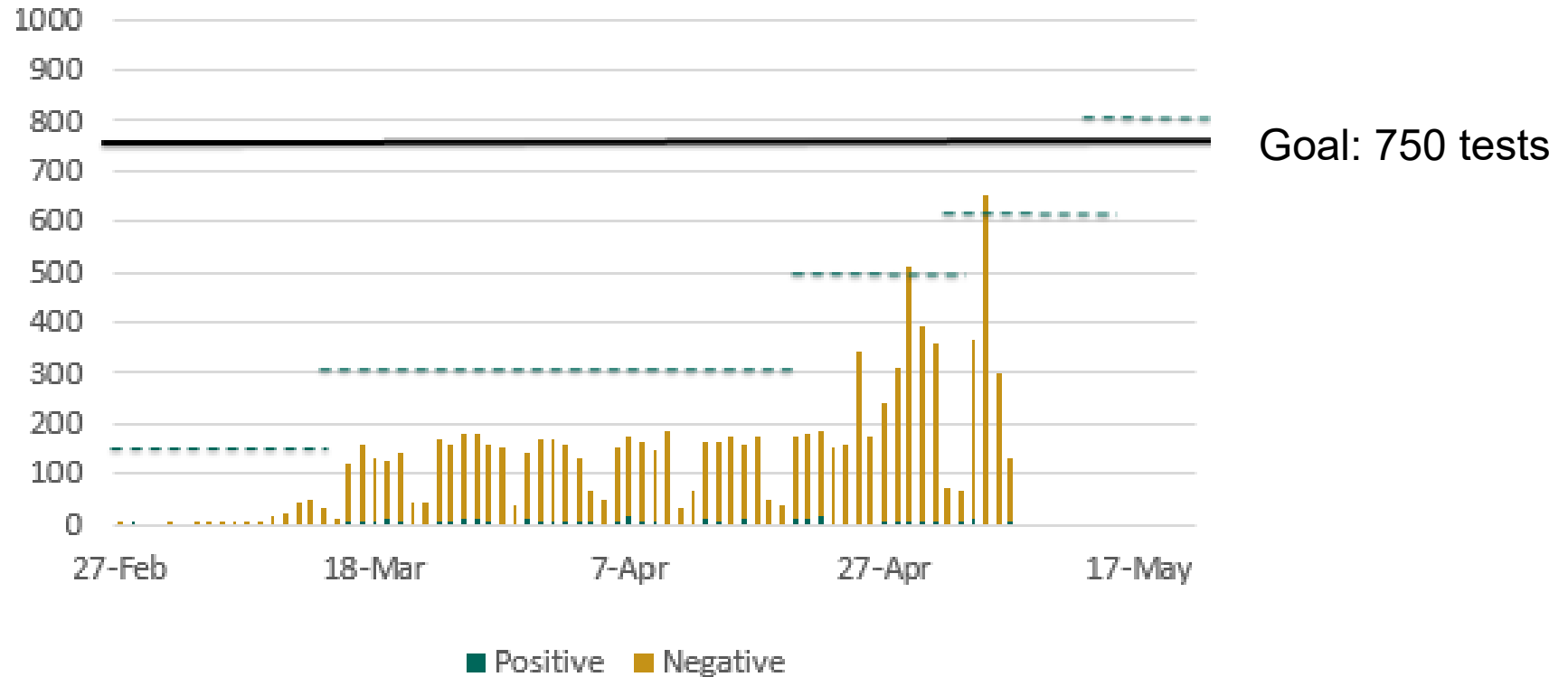
- Guidance for employers and essential critical infrastructure workplaces on how to structure the physical environment to protect essential workers.
  - *Business Mitigation Plan available from Economic Development Board*
- Availability of supplies (disinfectant, essential protective gear) to protect essential workers.
  - *Under assessment*

# *Governor's Readiness Criteria*

## **Testing capacity**

- Minimum daily testing volume to test 1.5 per 1,000 residents, which can be met through a combination of testing of symptomatic individuals and targeted surveillance.
- Testing availability for at least 75% of residents, as measured by a specimen collection site within 30 minutes driving time in urban areas, and 60 minutes in rural areas.

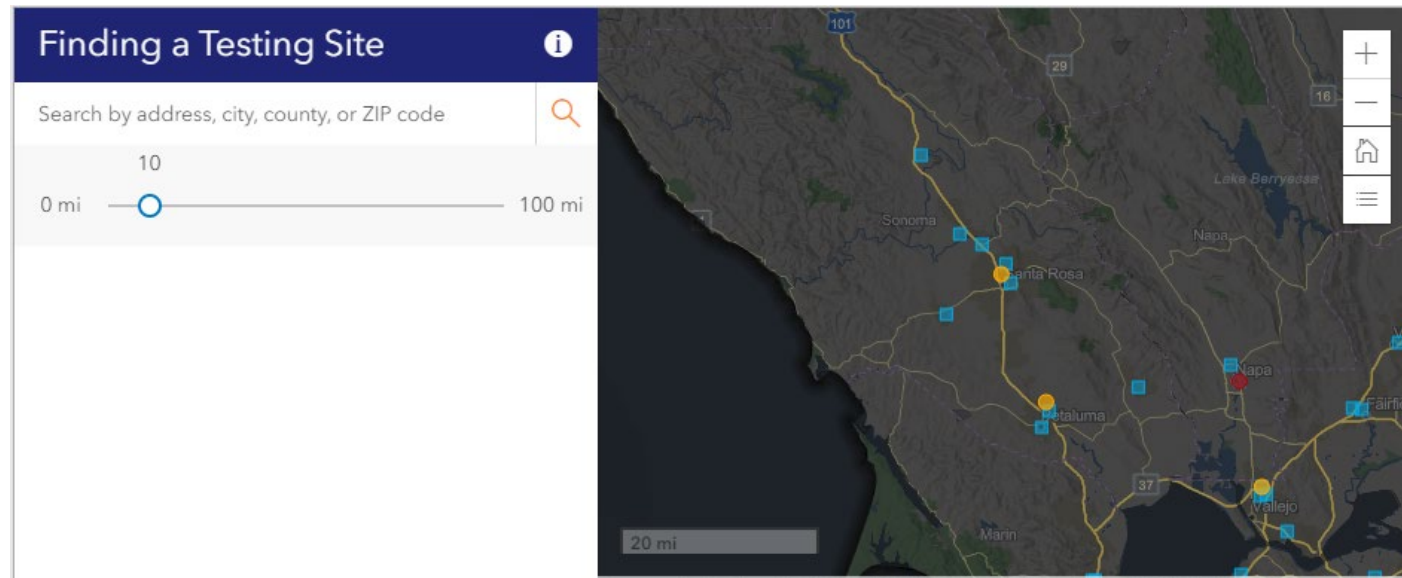
# Governor's Readiness Criteria



- Testing capacity is expanding. On May 18<sup>th</sup>, OptumServe will double testing capacity, bringing the collective testing capacity to over 800 tests per day.

# *Governor's Readiness Criteria*

- Testing Availability
  - New navigational site allows public to easily find closest testing site and eligibility information





# *Governor's Readiness Criteria*

## **Containment capacity**

- Sufficient contact tracing. Minimum of 15 staff per 100,000 county population trained and available for contact tracing;
- Availability of temporary housing units to shelter at least 15% of county residents experiencing homelessness in case of an outbreak among this population requiring isolation and quarantine of affected individuals.

# *Governor's Readiness Criteria*

- Sufficient Contact Tracing
  - Sonoma County needs at least 75 contact tracers
  - 50 County staff and volunteers are effectively managing current contact tracing needs, with 100 individuals trained to assist
  - Through State training/resources, local non-profit organizations, and County staffing, the County will train up to 200 additional contact tracing personnel and 50 case interviewers as indicated by surge needs.

# *Governor's Readiness Criteria*

- Ability to isolate/quarantine 15% of homeless population in event of Outbreak
  - Non-Congregate Care Site and Trailers
    - 152 rooms for medically vulnerable unsheltered individuals.  
With single occupancy, these placements would represent 5% of the overall homeless population of 2,951.
  - Alternate Care Sites
    - 256 isolation/quarantine rooms for individuals with COVID-19 tests pending and 90 placements for COVID 19 positive patients.

# *Governor's Readiness Criteria*

## **Hospital capacity**

- Hospital capacity to accommodate a minimum surge of 35% due to COVID-19 cases in addition to providing usual care for non-COVID-19 patients.
- Hospital facilities have a robust plan to protect the hospital workforce, both clinical and nonclinical, with PPE.

# *Governor's Readiness Criteria*

- Hospital Surge Capacity of at least 35%
  - Local hospitals have the internal capacity to expand staffed beds by 37.3%.
    - Sonoma County hospitals report 707 licensed beds (67 of which are licensed ICU beds) and the ability to add 264 beds through surge.
    - In addition, the County Alternate Care Sites offer additional capacity with 256 rooms for COVID-19 suspected individuals and 90 placements for COVID 19 positive patients.

# Governor's Readiness Criteria

## ● PPE Availability

- County receives daily report of hospital PPE supplies and is monitoring PPE burn rates to inform PPE stock needs.

PPE Description	Total PPE Requested by Health Care Partners	Total Shipped to Health Care Partners by County
N95 Masks – Adult	97,820	105,626
N95 Masks – Small	15,650	20,560
Surgical / Procedure Masks	164,210	162,700
Safety Glasses	2,564	3,792
Safety Goggles	5,627	1,380
Face Shields	2,944	4,513
Surgical Gowns	29,114	8,528
Tyvek Suits / Coveralls	20,947	20,511
Nitrile Gloves	463,060	279,836
Infrared Thermometers	267	57
Shoe/Boot Covers	-	0
Hand Sanitizer	701	6
TOTAL	802,904	615,869



# *Governor's Readiness Criteria*

## **Vulnerable populations**

- Skilled nursing facilities (SNF) have >14 day supply of PPE on hand for staff, with established process for ongoing procurement from non-state supply chains.

 *Still under assessment*

# *Governor's Readiness Criteria*

- Surveillance of Vulnerable Populations

Enhanced surveillance testing, PH Disease Control as of 5.7.20

Population under surveillance	Tests Comple
Skilled Nursing Facility/Post Acute Hosp	579
Homeless	84
Jail/Juvenile Hall	129
Residential Care Facilities/Board and Care/ Group	146
Hospice	35
<b>TOTAL</b>	<b>973</b>

## *Governor's Readiness Criteria*

- Monitoring COVID-19 Among Older Adults
  - Adults 65 years and older are currently under-represented in Sonoma County cases

Age_Category	Cases	% Cases	% Population
0-17 yrs	31	11.4%	19.7%
18-49 yrs	140	51.5%	39.7%
50-64 yrs	62	22.8%	21.0%
65+ yrs	39	14.3%	19.6%
<b>Total</b>	<b>272</b>	<b>100%</b>	<b>100%</b>

## *Governor's Readiness Criteria*

- Sectors and timelines
- Triggers for adjusting modifications
- Sonoma County's plan for moving through Stage 2
- COVID-19 Containment Plan

## *Reopening Risks*

Tighten or loosen orders based on reopening metrics

- Increase/decrease in infections
- Availability of testing
- ICU capacity
- Hospital bed surge

# *Public Health Officer Orders & Revisions to Date*

- March 13 (C19-01) Order Restricting Mass Gatherings
  - Prohibited all gatherings of 250 or more and gatherings of 10 or more of high risk individuals (except for family gatherings)
- March 13 (C19-02) Order to Restrict Visitation and Non-Essential Movement at Residential Care Facilities to Protect Facility Residents from COVID-19
  - Prohibited long term living facilities, including skilled nursing facilities, from allowing unauthorized visitors and non-essential personnel from visiting residents.



# *Public Health Officer Orders & Revisions to Date*

- March 17 Original Shelter In Place Order
  - Limits travel and business to only defined essential functions
- March 23 Closed Parks to Prevent COVID Spread
  - All Parks and Beaches Closed to pedestrian, bike and vehicular access
- March 31 Extends Shelter In Place from 4/7-5/3/20
  - Extends travel and business to slightly modified list of essential functions

# *Public Health Officer Orders & Revisions to Date*

- April 1 Order Rescinding Health Care Worker Flu Order
  - Rescinded standing order requiring healthcare workers who did not receive the seasonal flu shot to wear masks when treating patients in order to preserve critical supplies of PPE
- April 6 Health Officer Guidance on Surgical Masking for Healthcare Workers and First Responders
  - Recommended that all healthcare workers and first responders wear isolation medical grade masks when interacting with members of the public or patients.

# *Public Health Officer Orders & Revisions to Date*

- April 10 (C19-06-I & C19-06-Q) Order for Blanket Isolation and Blanket Quarantine
  - Requiring all persons “diagnosed or suspected of having COVID-19” to isolate, and healthcare providers and testing facilities are required to notify such individuals and serve them with a copy of the Order.
- April 13 (C19-07) Order for Public Facial Covering
  - Requiring all members of the public to wear facial coverings before going indoors or in an outdoor area where they cannot maintain social distancing at all times.

# *Public Health Officer Orders & Revisions to Date*

- April 16 Order for Symptom Screening and Masking for Staff at Congregate Living Facilities and First Responders
  - Requiring all staff at congregate living facilities, and first responders, to be temperature and symptom screened before going into their work facility, and requiring them to wear isolation medical grade masks when interacting with members of the public or residents.

# *Public Health Officer Orders & Revisions to Date*

- April 18 Amendment 1 to Order for Symptom Screening and Masking for Staff at Congregate Living Facilities and First Responders
  - Clarified the applicability of the masking order in certain congregate settings.
- April 28 Amended Parks Closure Order
  - “Soft Opening” of Parks to allow bike and walk in access to in-land parks
  - Coastal Parks and Beaches Remained Closed

# *Public Health Officer Orders & Revisions to Date*

- May 1 Extension and Loosening of Shelter In Place Order
  - All New Construction and Designated Remodels Allowed
  - Nurseries and Florists Permitted
  - Outdoor Landscaping Services
  - Golf
  - No end date to order/aligns with State approach



# *Public Health Officer Orders & Revisions to Date*

- May 7 Amended Shelter In Place Order - Stage 2
  - Aligns with Governor's Order initiating Stage 2 Recovery
  - Opens Retail Stores for Curbside Pickup/Delivery
  - Allows related manufacturing, supply chain and logistics
  - Moves from “essential business” to risk assessment model
- May 7 Park Closure Amendment - Boat Launch
  - Opens certain coastal boat launch facilities for recreational fishing

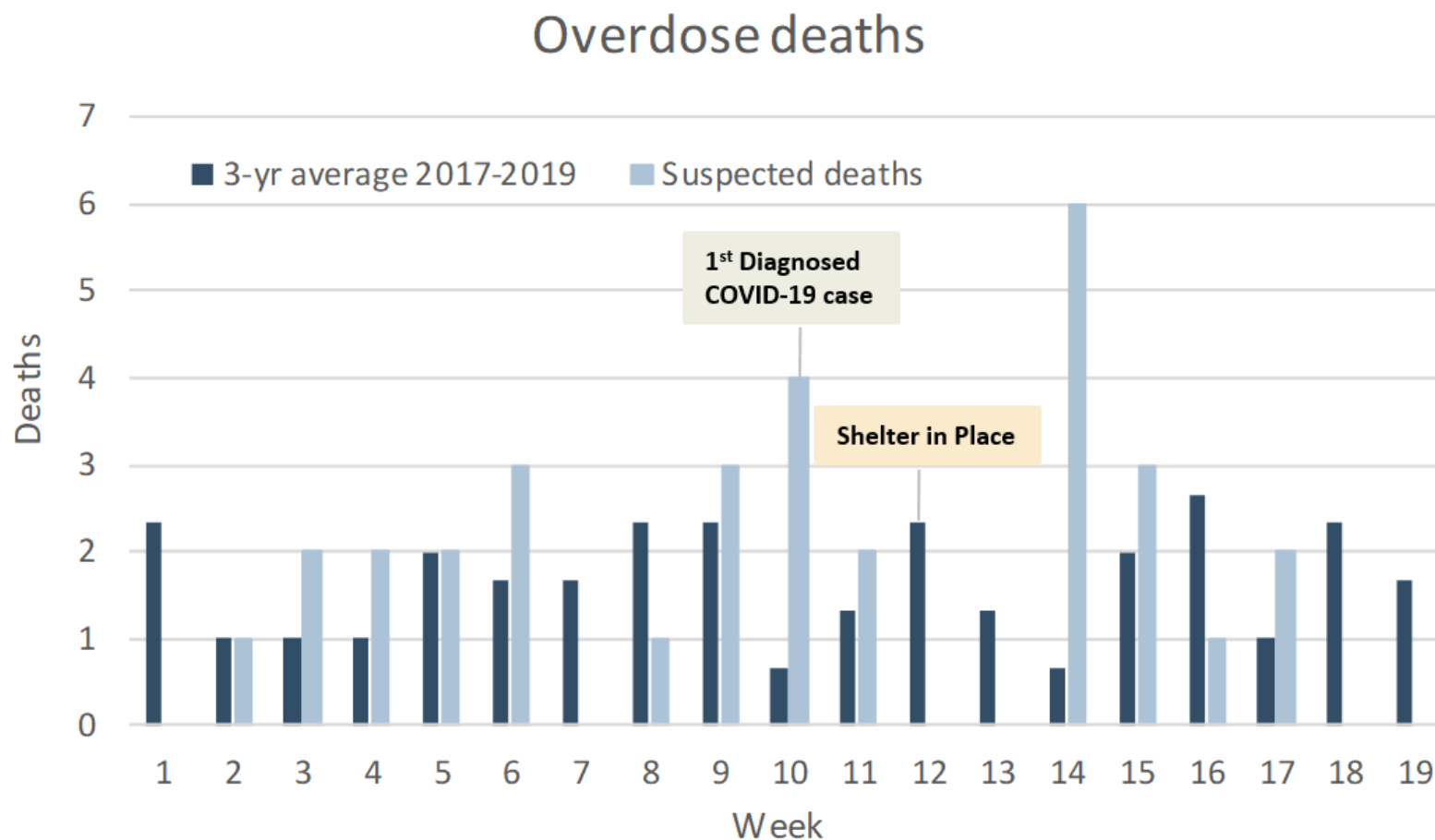
# *Public Health Officer Orders & Revisions to Date*

- May 11 Update to Blanket Isolation Order
  - Updated blanket isolation order to change the 7 day isolation period to 10 days to be consistent with new CDC guidance on length of isolation.

# *Elective Procedures Guidance*

- The Health Officer is working on two draft guidance for immediate release for hospital and nonhospital healthcare providers on how to resume elective and non-urgent procedures and surgeries with modifications to make them safer.
- The guidance applies to all healthcare setting, including dental offices.

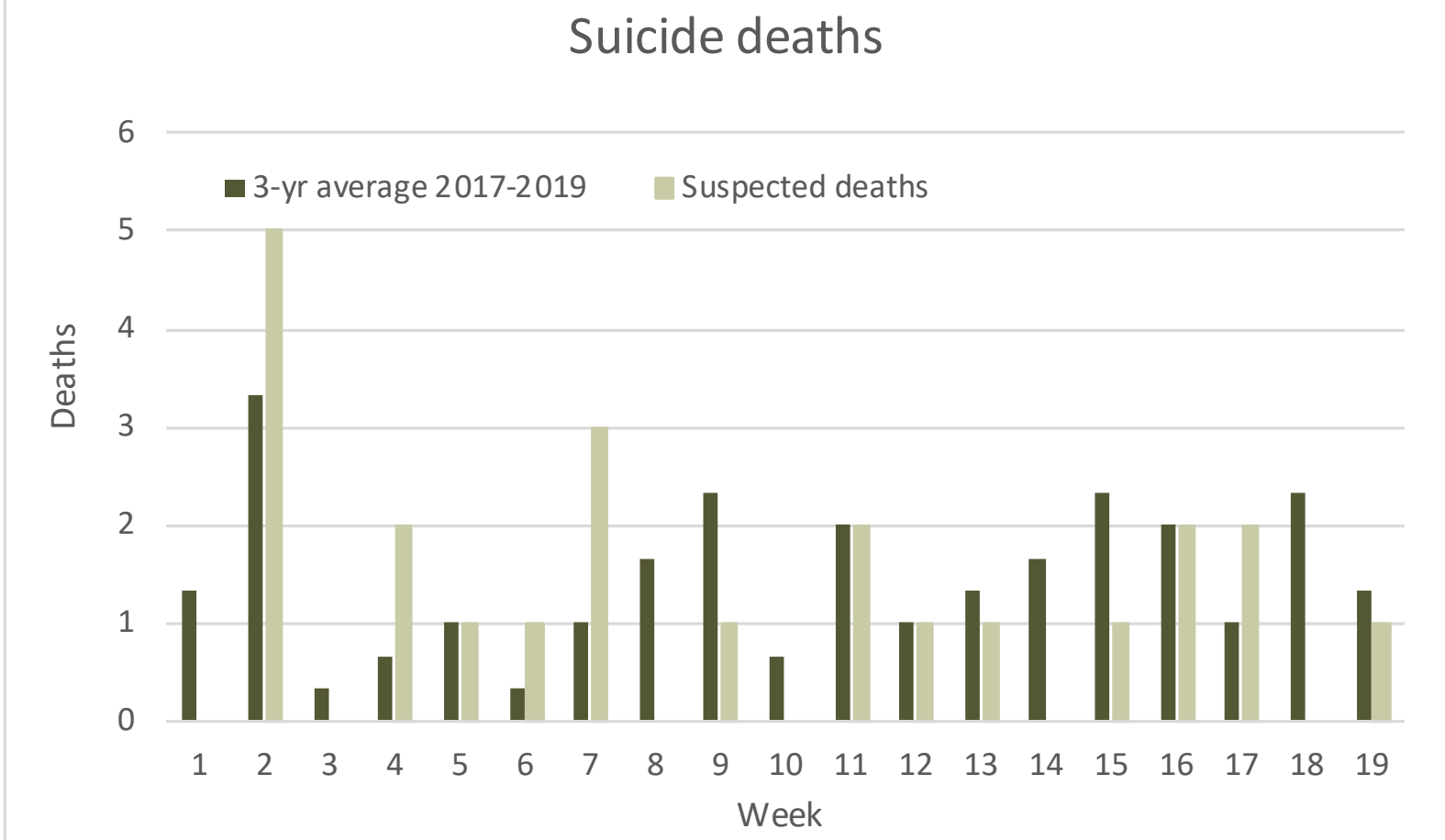
# Overdose deaths are similar to expected



Average deaths per week - Weeks 10-19: 2017-19 – 2  
2020 – 2

Source: Suspected overdose and suicide deaths - coroner surveillance; acute MI deaths – CA Comprehensive Death Files;  
Accessed 5.11.2020

# *Suicide deaths are slightly lower than expected*

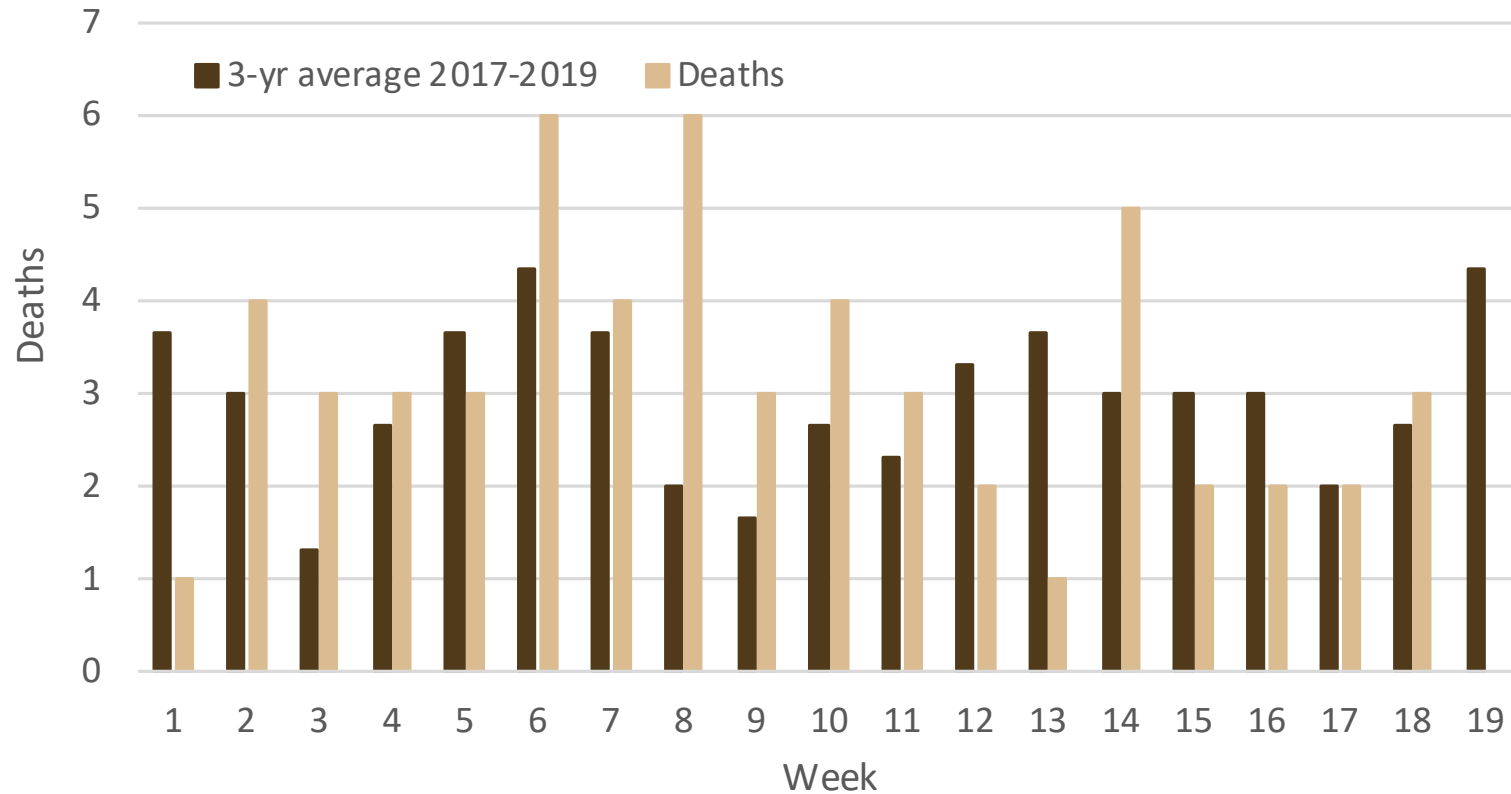


Average deaths per week - Weeks 10-19: 2017-19 – 2  
2020 – 1

Source: Suspected overdose and suicide deaths - coroner surveillance: acute MI deaths – CA Comprehensive Death Files;  
Accessed 5.11.2020

*Heart attack deaths are slightly lower than expected*

# Acute MI deaths

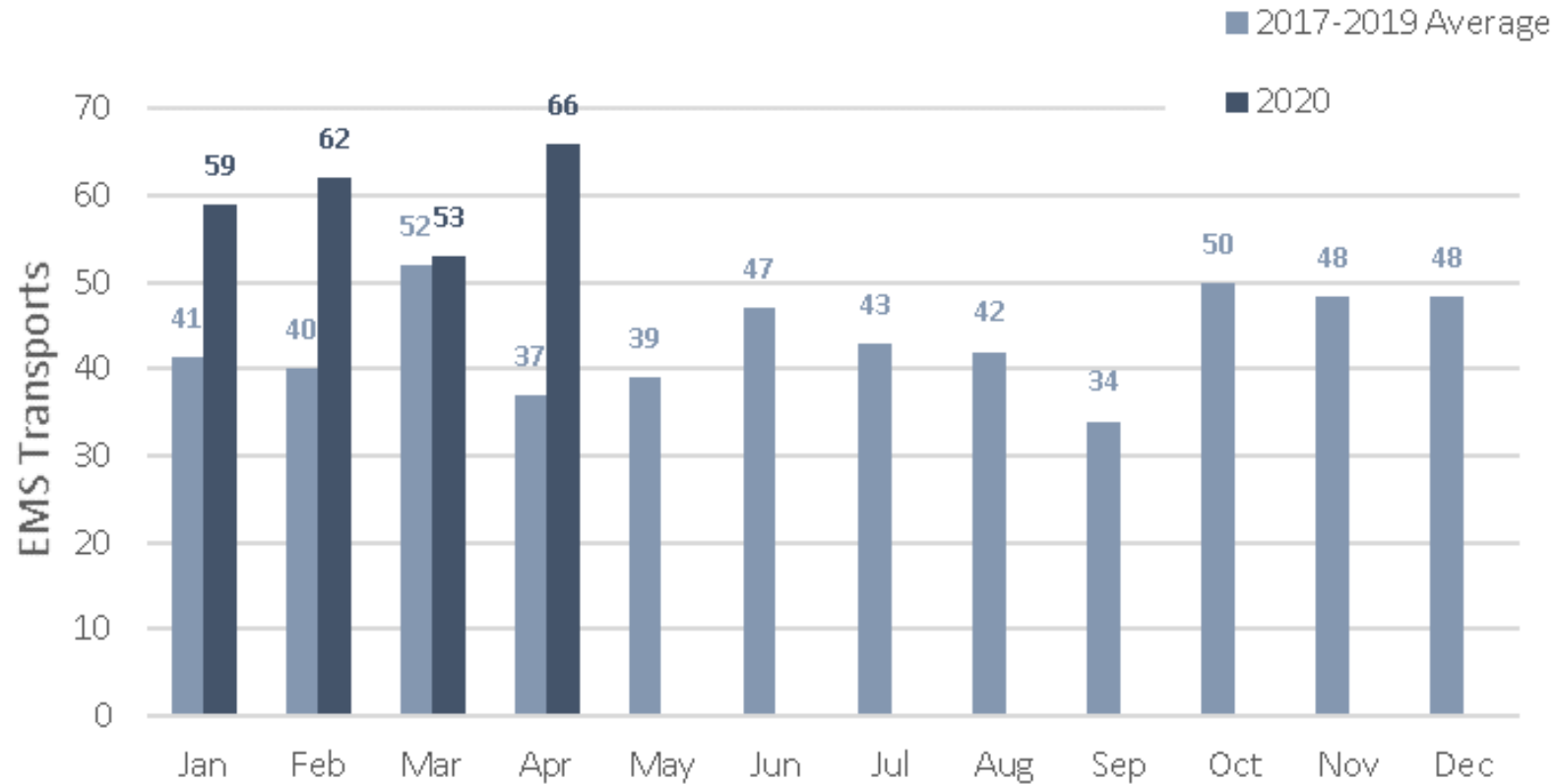


Average deaths per week - Weeks 10-19: 2017-19 – 3  
2020 – 2

Source: Suspected overdose and suicide deaths - coroner surveillance: acute MI deaths – CA Comprehensive Death Files; Accessed 5.11.2020

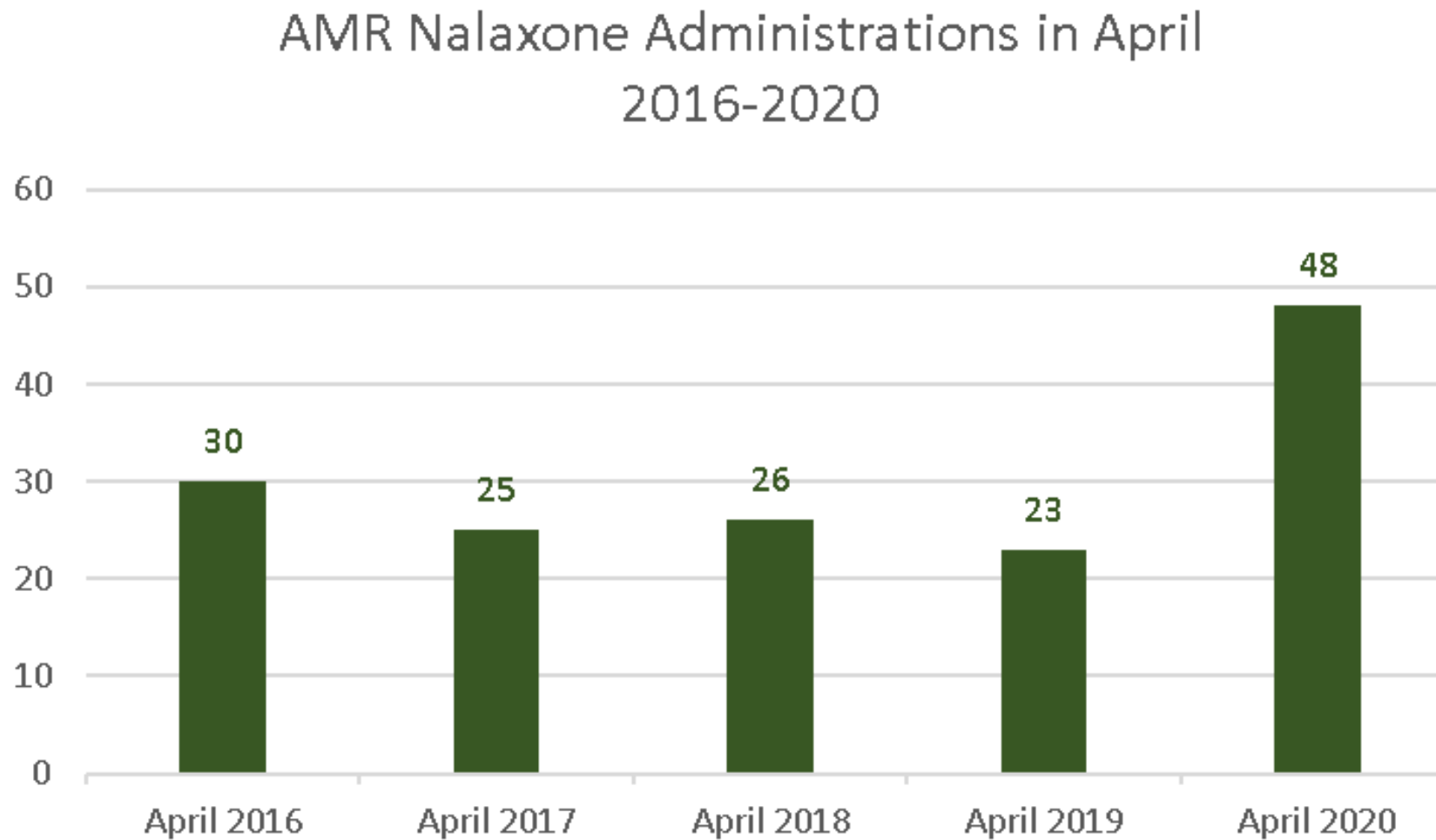
## *911 Response calls for Cardiac Arrest were elevated in April*

911 Response for Cardiac Arrest, Sonoma County



Source: Coastal Valleys EMS Agency ImageTrend System, Accessed 5.11.2020

## *AMR is reporting increased Naloxone Administrations*



Source: AMR MEDS Data System, personal communication



## **ALTERNATE CARE SITE APPROVED AT SSU**



## **SITIO DE ATENCIÓN ALTERNATIVO APROBADO EN SSU**

# *Alternate Care Site (ACS) & Non-Congregate Site (NCS)*

- Offset a possible surge of COVID-19 cases and enables the County health care system to remain functional
- Allow for isolation and quarantine for COVID-19 positive individuals and those awaiting test results
- Provide care for non-critical patients who are vulnerable to COVID-19 who are over the age of 65

# *Expectations For Site Residents*

- Follow Sonoma County's Shelter-in-Place (SIP) rules
- Restrictions on entering/exiting site
  - medical appointments unrelated to COVID-19 and job/work related reasons
- Individuals/Patients must be medically and psychiatrically stable
- The unsheltered will be enrolled in the County's ACCESS Initiative
- There are no visitors allowed
- Staff supervised walks & smoke breaks off campus

# *ACS/NCS Data at Sonoma State University Data*

## **Alternate Care Site (ACS) Data**

### **Hospital/Clinic Referrals to ACS**

- COVID-19 Positive - 8 (current as of 5/11)
- Cumulative Total to date– 10 (5/11)
  - COVID-19 Positive referrals began on 5/5/20
- COVID-19 Pending – 2 (current as of 5/11)
- Cumulative Total to date 17 – (5/11)
- Total number of COVID+ & Pending referrals to date: 27



# *ACS/NCS Data at Sonoma State University Data*

## **Non-Congregate Site Data**

- COVID Vulnerable (Homeless-Sheltering in Place) – 31
- Those considered vulnerable within the homeless population are individuals over the age of 65 and/or medically at risk
- **Total Served at the site as of 5/11 - 58**

# *Staffing, Security and Services Offered*

- On-site service providers see to the day-to-day needs of the residents.
- Minimum of 4 security members on site at the Verdote Village at all times augment the service teams on-site.
  - Health & social service teams
  - Volunteers
- The medical staff works with all residents to ensure that they receive the medical, mental health and addiction services necessary for their health and safety.



Verdote Village

## *What happens when the ACS/NCS Closes*

- Discharge criteria for those at the ACS
- The decontamination contract is being negotiated for closing the site
- For the unsheltered, a placement plan is in progress.

# Questions



[May]  
-  
[12]  
-  
[2020]

YOUR BUSINESS  
PARTNER



# **EDB Update COVID-19 Business Reopening and Economic Recovery Update**



[www.SonomaEDB.org](http://www.SonomaEDB.org)

# EDB Update COVID-19 Business Reopening and Economic Recovery Update

YOUR BUSINESS  
PARTNER



- COVID-19 Business Reopening and Economic Recovery Update
- Update on Business Recovery Task Force Workgroups
- [Development of Best Management Practices](#)
- 
- Full Roadmap to Reopening Plan
- 
- [Self-Certification Website](#)
- Update on Long Term Recovery Planning and Process
- 
- Remarks from Partners:
- Adam Peacock
- Chris Denny

May 12, 2020

[www.SonomaEDB.org](http://www.SonomaEDB.org)

# What Can the County do to Become more Business-Friendly and Support Businesses as they Reopen and Recover?

- Multi-department Committee
  - Permit Sonoma
  - Department of Health Services
  - Transportation and Public Works
  - County Counsel
  - County Administrator's Office
- Short-term and Long-term Approaches
- Outreach



# County Options to Support Businesses

## Permit Sonoma / Transportation and Public Works

- **Extend discretionary permits and maps for two years.** The County can grant individual extensions beyond the current three-year period for cause indefinitely.
- **Adopt policies to allow businesses to reconfigure physical spaces to meet health protocols.** Convert parking lots, sidewalks, park and ride lots and other public parking areas, and allow temporary road and/or lane closures for restaurant seating, merchandise display, and pick-up/take-out services.
- In public rights-of-way, **streamline encroachment permits for sidewalk and street use and consider waiving encroachment permit fees.** For encroachment into State rights-of-way, work with Caltrans and the California Coastal Commission to provide similar relief.



# County Options to Support Businesses

## Permit Sonoma / Transportation and Public Works

- **Evaluate conditional uses that could be converted to permitted uses (no use permit required)** to address essential needs such as our local food network, and infrastructure.
- **Expedite specific plans for the Airport, Springs and Sonoma Developmental Center** that foster economic development.
- Conduct environmental impact report on key housing sites that will **programmatically address environmental impacts of and reduce permitting times for new housing.**
- **Conduct all permitting on-line.**
- **Support Economic Development Board with general business and Spanish language issues** related to reopening and regulatory compliance.



# County Options to Support Businesses

## Environmental Health Division

- **Waive inspection requirements for reopening of facilities** closed due to the Shelter in Place Order.
- **Extend timeline for penalties** to allow for an additional 60 days and consider reducing penalty amounts.
- **Reduce enforcement for closure of facilities due to non-payment** and allow more time for facilities to enter into payment plans and recovery on a case by case basis.
- **Consider using \$750K from the fee stabilization fund to keep FY19-20 fees flat; approved FY 20-21 rates increased 11%.**





# County Options to Support Businesses

## County Environmental Health Division

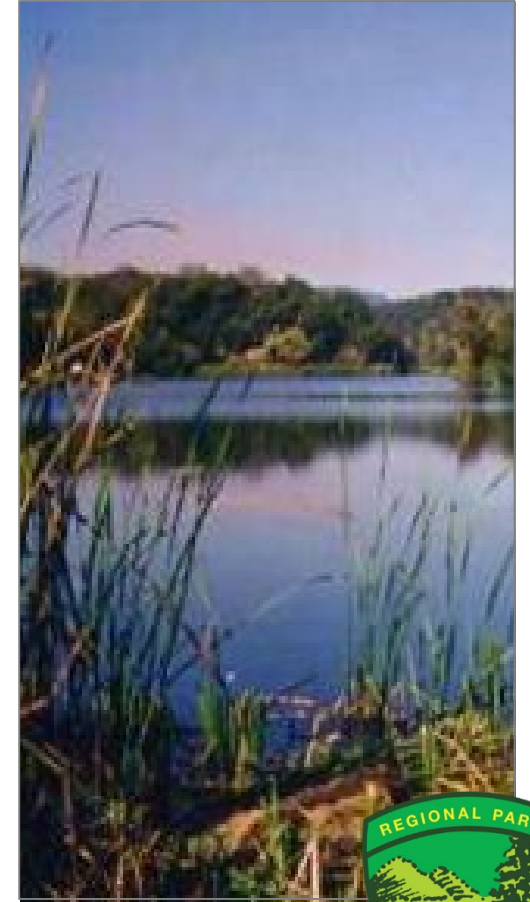
- **Defer permits for facilities closed under the Shelter in Place Order**, e.g. recreational pool permits.
- **Expedite change of ownership processes and extend timeline for compliance with current construction standards.** Environmental Health can extend the construction timeline for items that are not an immediate health hazard and allow up to 6 months for compliance.
- **Permanently extend timeline for facility construction after plan approval from one to two years without fees.** Environmental Health has recently granted extensions to approved plans for facility construction due to delays from recent disasters.
- **Defer completion deadline for debris cleanup from Kincade fire to August 1st.**



# Parks Update

## Current Amended Parks Health Order - April 28, 2020

- Inland Parks (local, city, county, state, federal, non profit)
  - Most facilities open for walk in / bike in access
  - No significant issues with overcrowded conditions
  - Nearly all individuals and households social distancing adequately
  - Some issues with neighborhood parking to access parks and trails
- Coastal Zone Parks (primarily county and state)
  - Recreational boat launch at Westside Park opened Friday, May 8th
  - Spud Point Marina and Masons Marina open for boaters with slips
  - No public access to parks, trails or beaches
  - Steady volume of visitors (majority non-residents)





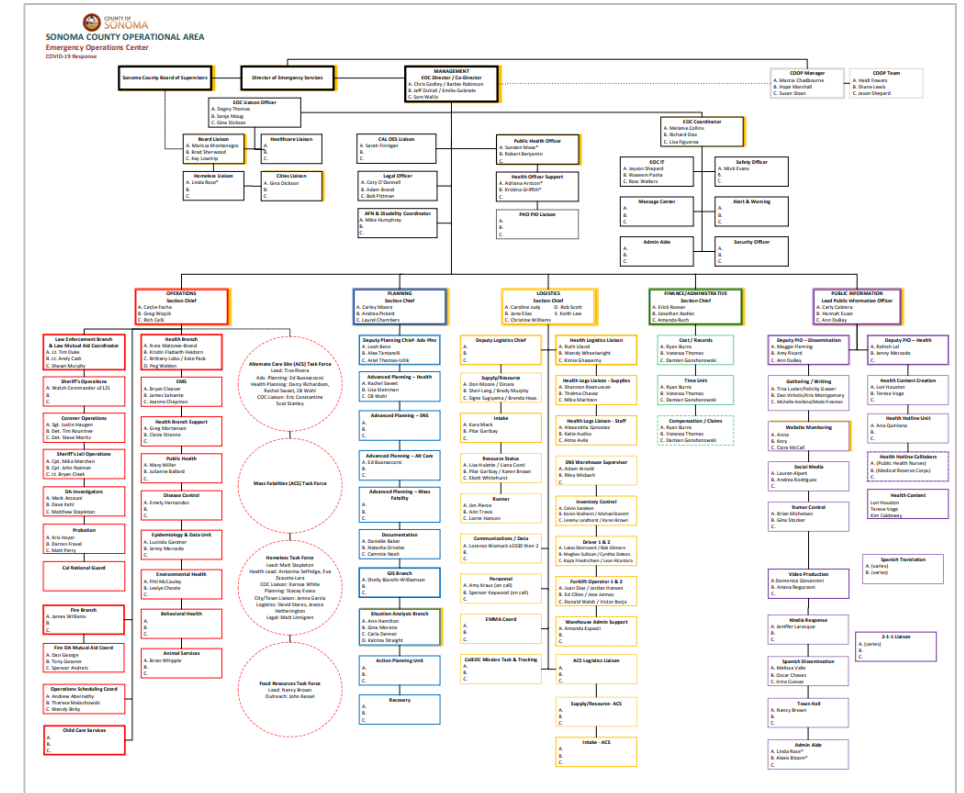
# Parks Update

## Discussion & Input: Additional Easing of Park Restrictions

- Inland Parks (local, city, county, state, federal, non profit)
  - Opening of parking areas
  - Low risk outdoor park facilities and amenities
  - Inland boat launch ramps
  - Restore park membership program and day use parking fees
- Coastal Zone Parks (primarily county and state)
  - Walk in / bike in access allowed from one's residence
  - No parking lots open or use of motor vehicle to travel to park
  - All coastal beaches closed from 11 am to 5 pm daily
  - Sedentary activities at beach not permitted



- Emergency Operations Center (EOC)



# Emergency Management Update

- Community-based groups/organizations efforts  
Buy from Food Bank; some partner with restaurants
- Human Services Department - augmented Meals on Wheels:  
Expanded to anyone 65+  
2 months = 62,000 meals
- Food Resources Task Force  
Partnership with 9 non-profits  
Bulk food and prepared meals  
April thru May = \$1M for 287,304 meals



# Emergency Management Update

- Great Plates Delivered Program



- Public Information



A still from a video interview. On the left, a man with glasses and a balding head, wearing a dark jacket over a light-colored shirt, is looking towards the right. On the right, a woman with long dark hair, wearing a black jacket over a black and white striped shirt, is looking towards the man and gesturing with her right hand. They are seated in front of a backdrop that shows a city skyline (San Francisco) and a large map of the United States. The text '© 2020 NBCUniversal' is visible in the bottom right corner.





# Emergency Management Update

- Concurrent Hazard Preparedness



# Questions / Discussion



