



Novel Coronavirus Update for BOS

MARCH 17, 2020

Dr. Sundari Mase, Public Health Officer, Sonoma County, Department of Health Services



sonoma county
DEPARTMENT OF HEALTH SERVICES

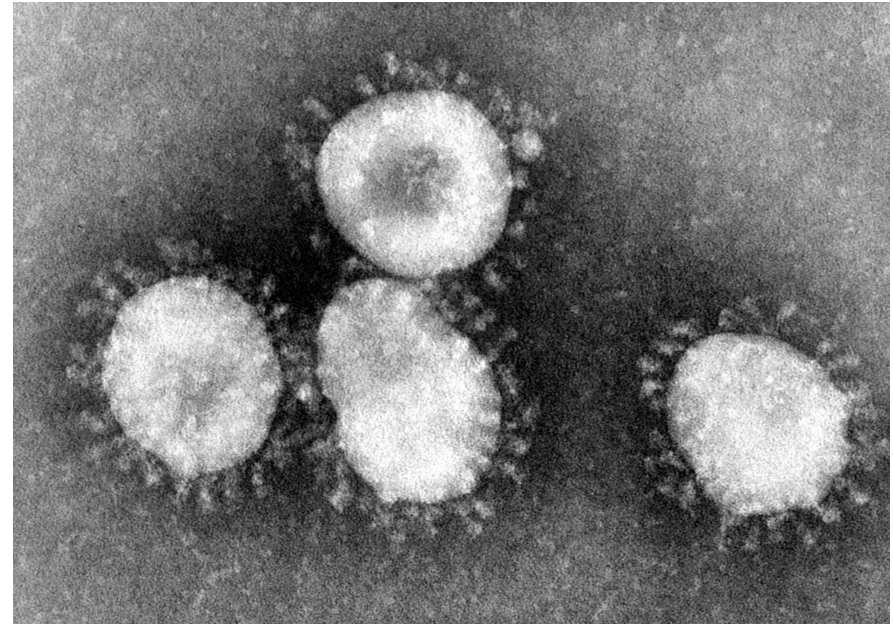
Background

- Novel coronavirus identified in December 2019 in Wuhan City, Hubei Province, China
- Initially detected as a cluster of pneumonia cases with exposure to a local open-air market



About Coronaviruses

- Enveloped, single-strand RNA virus infecting both animals and humans
- The four most common strains circulate worldwide
 - 229E
 - OC43
 - NL63
 - HKU1
- Significant contributor to the “common cold”



MERS-CoV and SARS-CoV-1

Coronaviruses have also caused epidemics in humans:

- **Severe Acute Respiratory Syndrome (SARS)**
 - 2002-2004 caused 8,093 cases with 774 deaths (9.5% CFR)
 - Cases identified in China, Hong Kong, Taiwan and Toronto, Canada
 - 8 cases identified in US residents, all with travel exposure
 - Bats identified as reservoir, likely transmitted via civets
- **Middle East Respiratory Syndrome (MERS)**
 - 2012-present caused 2,494 cases with 858 deaths (34% CFR)
 - Majority of cases in Saudi Arabia
 - 2 cases identified in US residents with travel to Saudi Arabia
 - Bats identified as reservoir, likely transmitted via camels

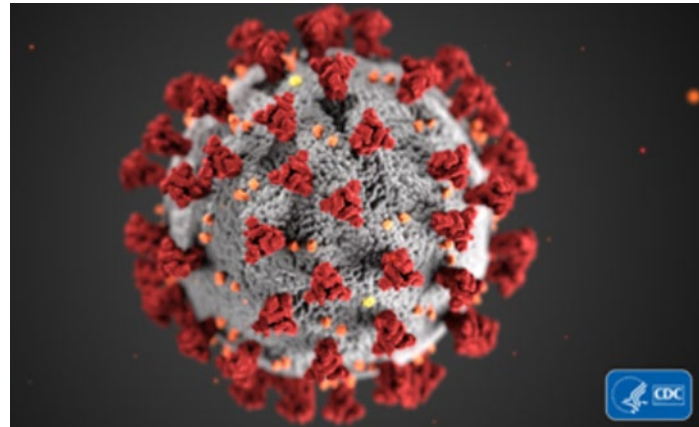
COVID-19 and SARS-CoV-2

COVID-19

- ‘CO’ stands for ‘corona,’ ‘VI’ for ‘virus,’ and ‘D’ for disease

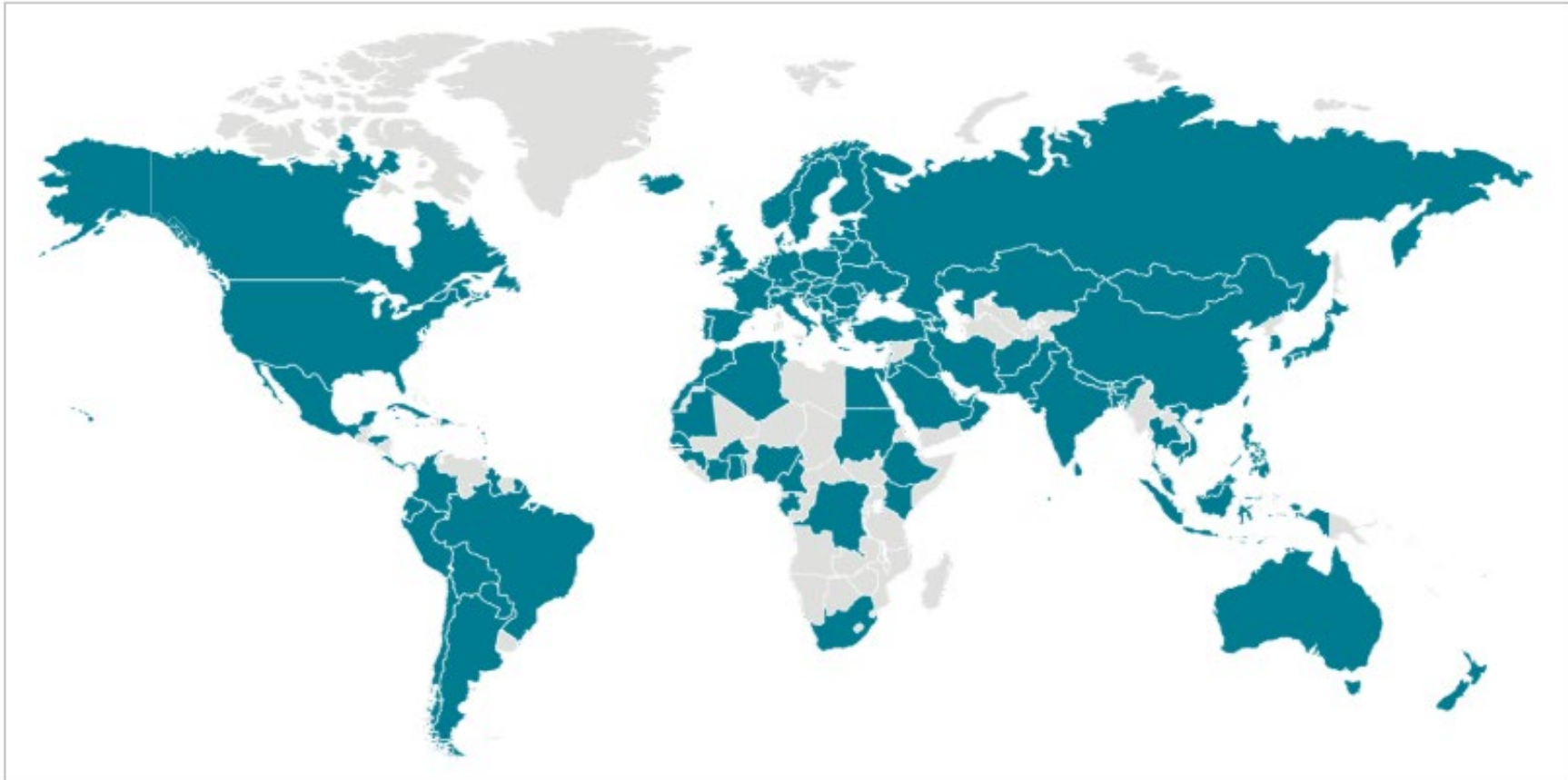
SARS-CoV-2

- The virus itself



Global Update

3.16.2020 8:00 AM



Source: CDC, WHO, Accessed 3.13.2020

Global Update

3.16.2020 8:00 AM

- Globally 153,517 confirmed (28,469 new)
- 5,735 deaths (1,122 new)
- China 81,048 confirmed (67 new)
 - 3,204 deaths (31 new)
- Outside of China 77,469 confirmed (33,402 new)
 - 2,531 deaths (1,091 new)
- 143 countries/territories/areas (26 new)
- Majority of countries/territories/areas reporting local transmission

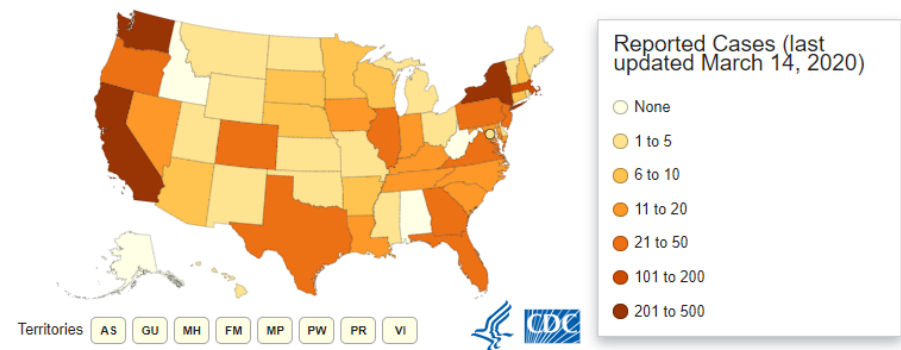
Source: WHO Situation Report - 55, Accessed 3.15.2020

National Update

3.14.2020 8:00 AM

- First case reported in a returning traveler in Snohomish County, WA on **January 21, 2020**
- First case of suspected community transmission reported in Solano County, CA on **February 26, 2020**
- First death reported in King County, WA on **February 29, 2020**
- An additional 49 persons repatriated from Wuhan City and the Diamond Princess cruise ship also tested positive, bringing the total number of US cases to 1,256.

States Reporting Cases of COVID-19 to CDC*



COVID-19: U.S. at a Glance*

- Total cases: 1,629
- Total deaths: 41
- Jurisdictions reporting cases: 47 (46 states and District of Columbia)

Cases of COVID-19 Reported in the US, by Source of Exposure*†

Travel-related	138
Close contact	129
Under investigation	1,362
Total cases	1,629

Sources: CDC, Washington State DOH, Solano County DPH, Accessed 3.13.2020

Updated CDC Travel Advisories

Widespread ongoing transmission with restrictions on entry to the United States

CDC recommends that travelers avoid all nonessential travel to the following destinations. Most foreign nationals who have been in one of these countries during the previous 14 days will not be allowed to enter the United States.

- [China](#)
- [Iran](#)
- [Most European Countries](#)
- [United Kingdom and Ireland](#)

Widespread ongoing transmission without restrictions on entry to the United States

CDC recommends that travelers avoid all nonessential travel to the following destinations:

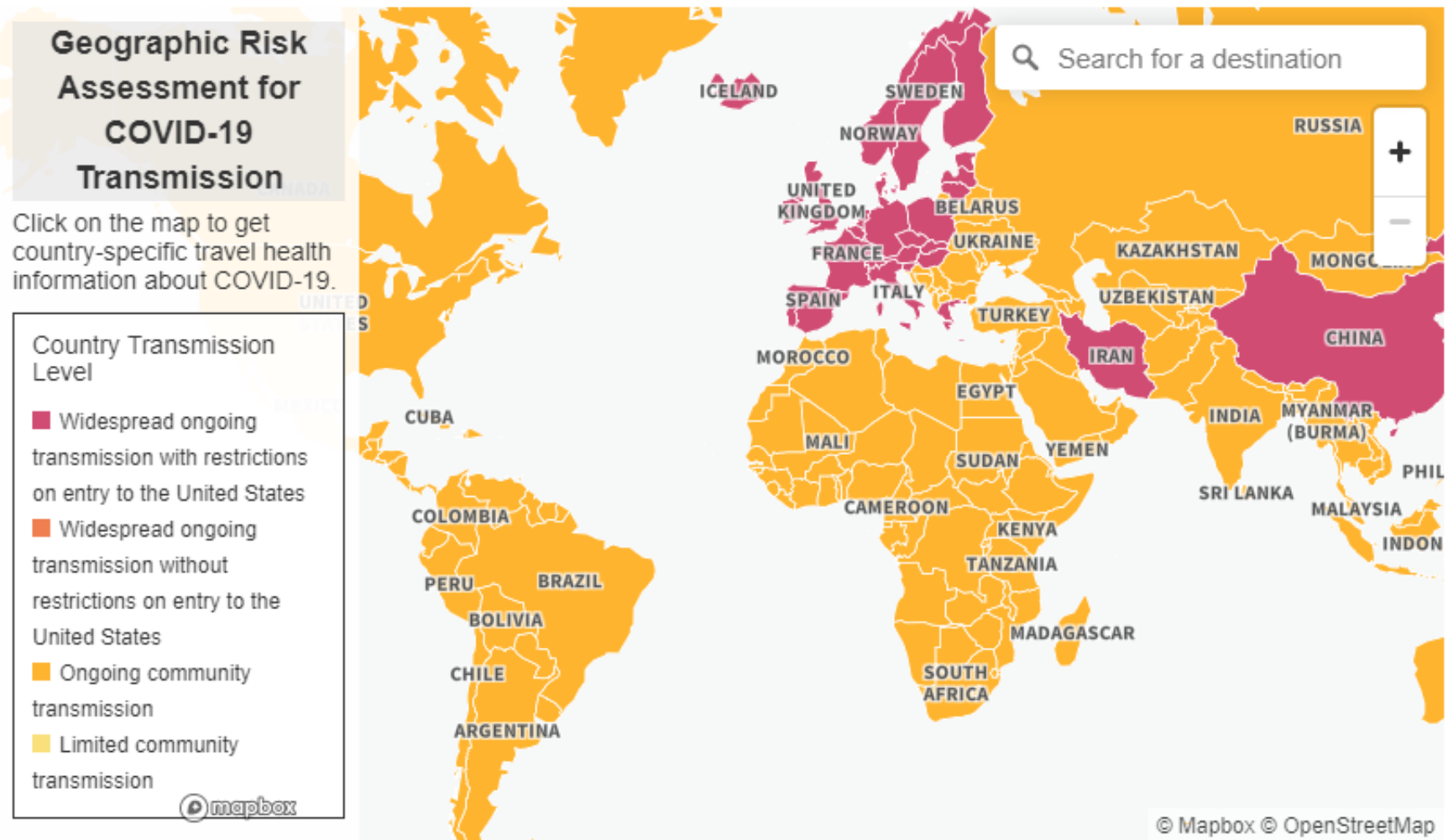
- [South Korea](#)

Ongoing community transmission

CDC recommends that older adults and people of any age with serious chronic medical conditions should consider postponing nonessential travel to most global destinations:

- [Global Outbreak Notice](#)

Search COVID-19 risk assessment by country.



<https://www.cdc.gov/coronavirus/2019-ncov/travelers/index.html>

California Update

3.16.2020 8:00 AM

- 392 positive cases
 - 24 from repatriation flights
 - 71 travel-related
 - 68 person-to-person
 - 80 community acquired
 - 138 under investigation
 - 8 unknown
- 6 deaths
 - 1 Placer
 - 2 Santa Clara
 - 1 Sacramento County
 - 1 Los Angeles County
 - 1 San Mateo County
- Age distribution
 - 0-17 years – 6 cases
 - 18-64 years – 210 cases
 - 65+ years – 116 cases
 - Unknown age – 3 cases



Sources: CDPH, Accessed 3.16.2020

Local/Regional Update

3.16.2020 8:00 AM

	Community/ Travel	Person- to- Person	Grand Princess	Unknown	Total
Sonoma	2/1		2	1	6
Mendocino					0
Lake					0
Marin	6	2	1		9
Napa					0

- Testing for residents has shifted from CDC to CPDH to our local public health laboratory.
- Sonoma County Public Health Laboratory began local testing on March 7, 2020 (includes testing for Mendocino and Lake).

Goals and Objectives

Key Goals for the U.S. healthcare system in response to the COVID-19 outbreak are to:

1. Reduce morbidity and mortality
2. Minimize disease transmission
3. Protect healthcare personnel
4. Preserve healthcare system functioning

Containment vs. Mitigation

Containment

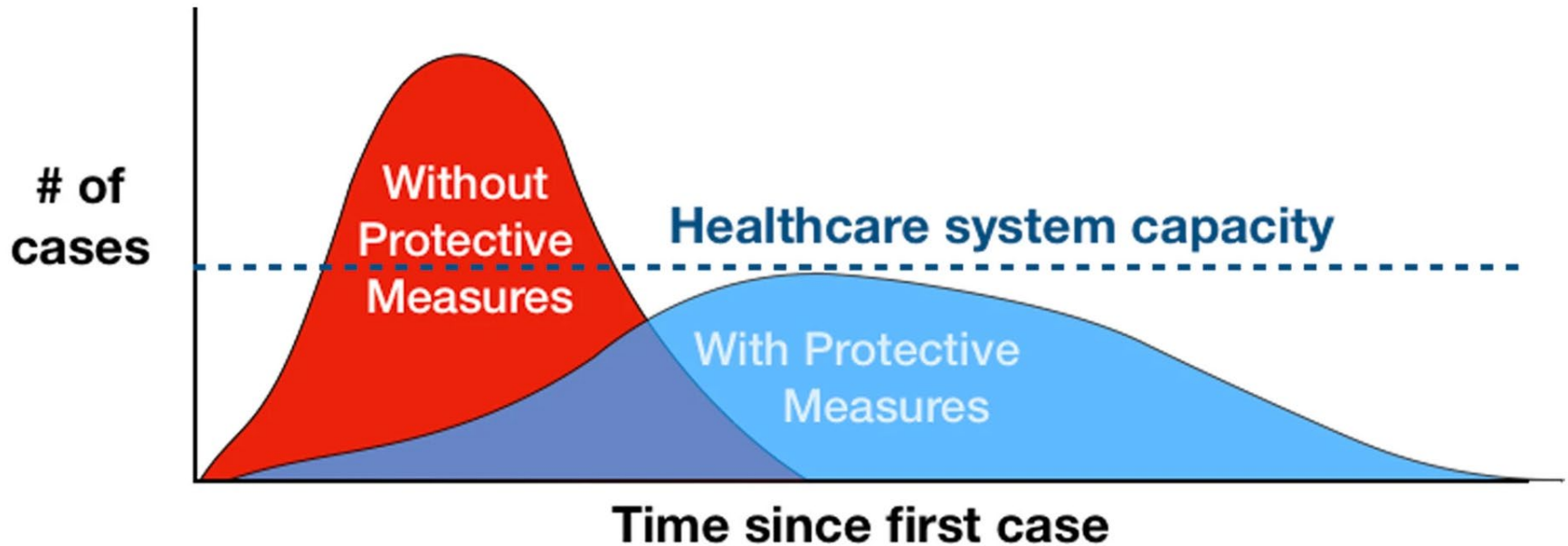
- Restrictions on movement
- Travel monitoring
- Isolation and quarantine
- Intensive case investigation

Mitigation

- Pharmaceutical Measures
- Non-pharmaceutical Interventions
 - Social distancing
 - Restrict public gatherings
 - School Closures

Community-based Interventions

1. Delay outbreak peak
2. Decompress peak burden on hospitals/infrastructure
3. Diminish overall cases and health impacts



Adapted from CDC / The Economist

Current Containment and Mitigation Strategies in Sonoma County

- Containment
 - Ongoing surveillance for COVID-19
 - Active case follow-up and 14 day monitoring of persons exposed to known cases
 - Quarantine and isolation
- Mitigation
 - Individual: hand and respiratory hygiene, self-shielding
 - Community: social distancing, restrict public gatherings

What is a Pandemic?

The WHO defines a pandemic as “an epidemic occurring worldwide, or over a very wide area, crossing international boundaries and usually affecting a large number of people.”

WHO declared COVID-19 a pandemic on March 12, 2020

Why is a pandemic different from other disasters?

- Every community will experience the pandemic as a local event
- Can happen in many places at the same time.
- A pandemic can continue to spread illnesses in waves that can last for a year or more.
- There will be limited assistance from Federal, state and other sources of mutual aid.
- The entire community will need to work together to respond effectively

CDC Training Available

Application and Integration of Nonpharmaceutical Interventions (NPI) into Pre-Pandemic Influenza Planning, Preparedness and Response

<https://www.train.org/california/course/1051645/>

Links to Guidance

- Guidance for gatherings:

https://www.cdph.ca.gov/Programs/CID/DCDC/CDPH%20Document%20Library/Gathering_Guidance_03.11.20.pdf

- Guidance for schools:

https://www.cdph.ca.gov/Programs/CID/DCDC/CDPH%20Document%20Library/School%20Guidance_ADA%20Compliant_FINAL.pdf

- Guidance for long term care facilities:

<https://www.cdph.ca.gov/Programs/CHCQ/LCP/Pages/AFL-20-22.aspx>

- Others:

<https://www.cdph.ca.gov/Programs/CID/DCDC/Pages/Guidance.aspx>