



# **Novel Coronavirus Threat Update & Sonoma County Pandemic Annex**

**MARCH 10, 2020**

**Chris Godley**, Director, Sonoma County Department of Emergency Management  
**Dr. Sundari Mase**, Public Health Officer, Sonoma County, Department of Health Services  
**Dr. Celeste Philip**, Public Health Officer, Sonoma County, Department of Health Services  
**Rohish Lal**, Public Information Officer, Sonoma County Department of Health Services  
**Carly Cabrera**, Communications Manager, Department of Emergency Management  
**Nicollette Weinzeveg**, Health Program Officer, United Way of the Wine Country

# Agenda

- **Situation Update**
- **Local Efforts**
- **Federal, State, Local Proclamations**
- **Public Information Update**
- **Recommended Actions**



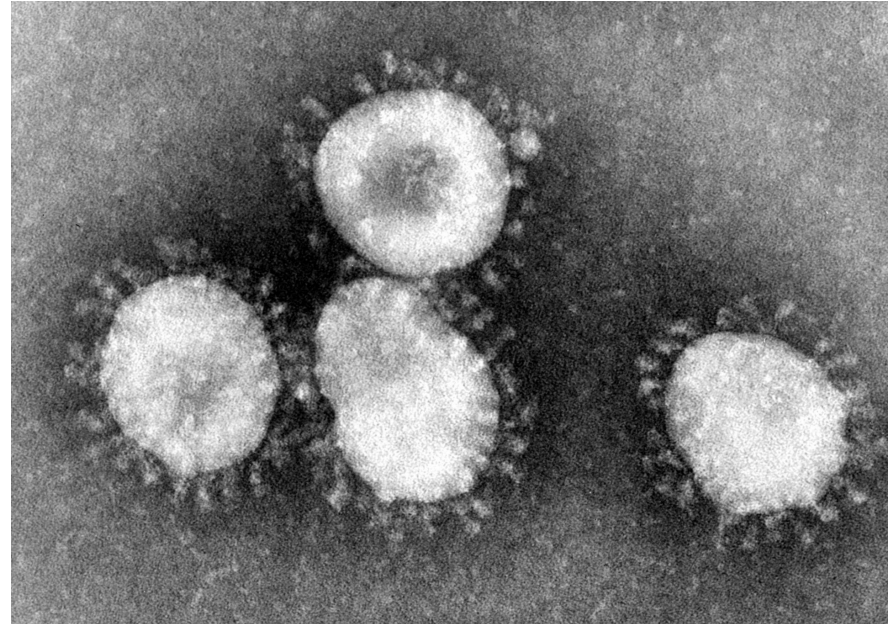
# Background

- Novel coronavirus identified in December 2019 in Wuhan City, Hubei Province, China
- Initially detected as a cluster of pneumonia cases with exposure to a local open-air market
- Thought to have originated from bats; civets and other animals possible



# About Coronaviruses

- Enveloped, single-strand RNA virus infecting both animals and humans
- The four most common strains circulate worldwide – significant contributor to the “common cold”



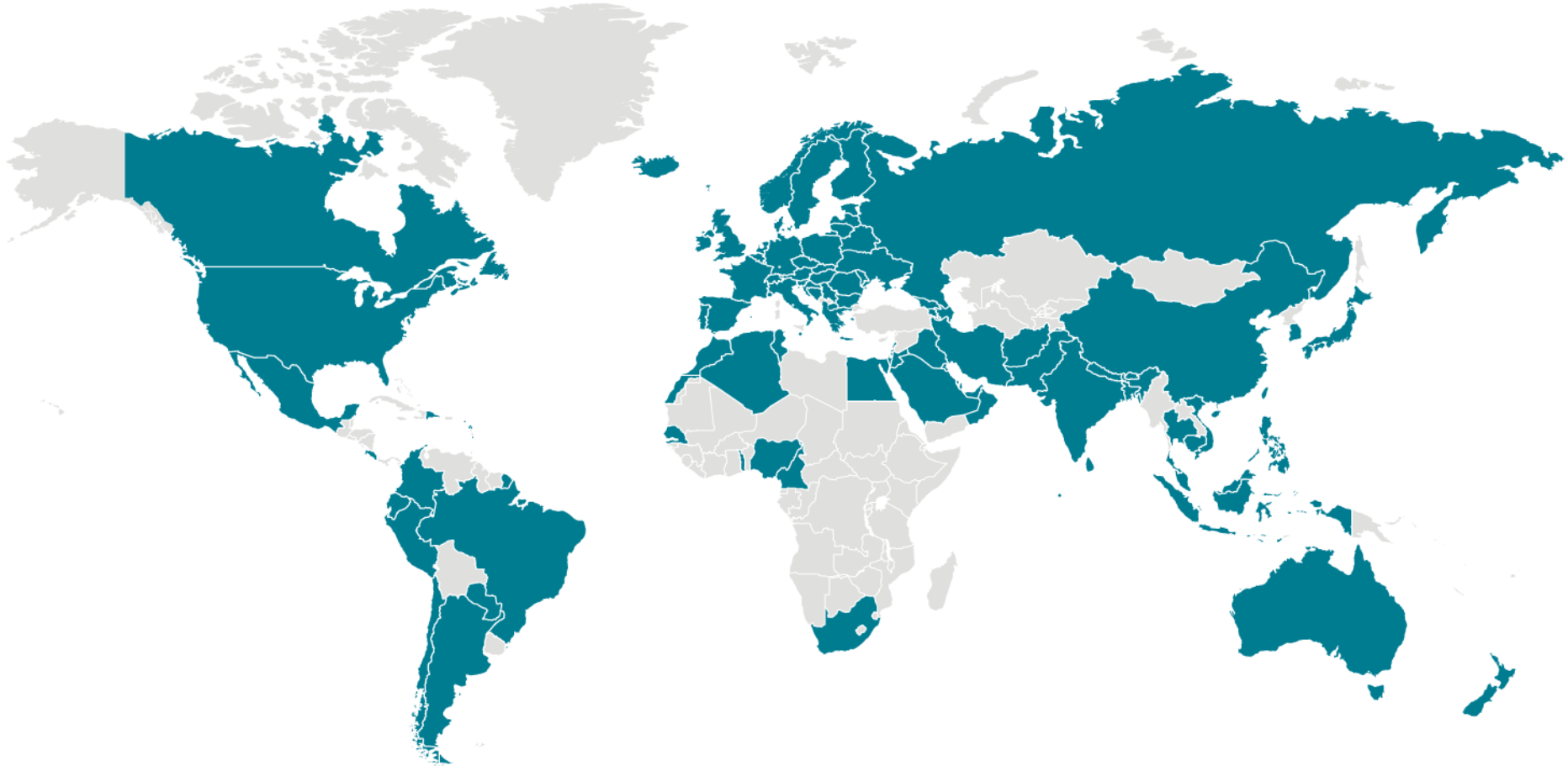
# MERS-CoV and SARS-CoV

Coronaviruses have also caused epidemics in humans:

- **Severe Acute Respiratory Syndrome (SARS)**
  - 2002-2004 caused 8,093 cases with 774 deaths (9.5% CFR)
  - Cases identified in China, Hong Kong, Taiwan and Toronto, Canada
  - 8 cases identified in US residents, all with travel exposure
  - Bats identified as reservoir, likely transmitted via civets
- **Middle East Respiratory Syndrome (MERS)**
  - 2012-present caused 2,494 cases with 858 deaths (34% CFR)
  - Majority of cases in Saudi Arabia
  - 2 cases identified in US residents with travel to Saudi Arabia
  - Bats identified as reservoir, likely transmitted via camels

# Global Update

*3.9.2020 8:00 AM*



Source: CDC, WHO, Accessed 3.9.2020

# Global Update

3.9.2020 8:00 AM

- Globally 109,577 confirmed (3993 new)
- 3,809 deaths (225 new)
- China 80,904 confirmed (45 new)
  - 3,123 deaths (23 new)
- Outside of China 28,673 confirmed (3948 new)
  - 686 deaths (202 new)
- 104 countries/territories/areas (3 new)
- Countries with widespread or sustained transmission include China, South Korea, Italy, Iran and Japan.

Source: WHO Situation Report - 49, Accessed 3.9.2020

# Updated CDC Travel Advisories

## Widespread sustained (ongoing) transmission and restrictions on entry to the United States

CDC recommends that travelers avoid all nonessential travel to the following destinations. Entry of foreign nationals from these destinations has been suspended.

- China ([Level 3 Travel Health Notice](#))
- Iran ([Level 3 Travel Health Notice](#))

## Widespread sustained (ongoing) transmission

CDC recommends that travelers avoid all nonessential travel to the following destinations:

- South Korea ([Level 3 Travel Health Notice](#))
- Italy ([Level 3 Travel Health Notice](#))

## Sustained (ongoing) community transmission

CDC recommends that older adults or those who have chronic medical conditions consider postponing travel to the following destinations:

- Japan ([Level 2 Travel Health Notice](#))

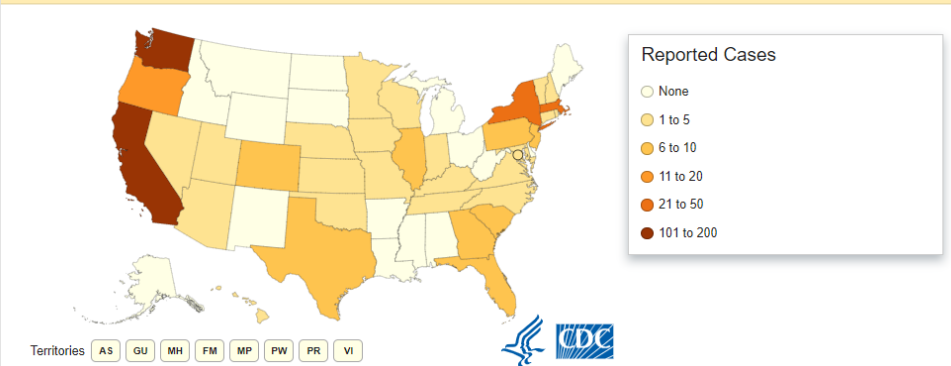


# National Update

3.9.2020 8:00 AM

- First case reported in a returning traveler in Snohomish County, WA on **January 21, 2020**
- First case of suspected community transmission reported in Solano County, CA on **February 26, 2020**
- First death reported in King County, WA on **February 29, 2020**
- An additional 49 persons repatriated from Wuhan City and the Diamond Princess cruise ship also tested positive, bringing the total number of US cases to **472**.
- **States with community transmission include WA, CA, NY, MA and possibly others.**

States Reporting Cases of COVID-19 to CDC\*



COVID-19: U.S. at a Glance\*

- Total cases: 423
- Total deaths: 19
- States reporting cases: 35 (includes District of Columbia)

COVID-19: Cases in the United States Reported to CDC\*†‡

Travel-related	72
Person-to-person spread	29
Under Investigation	322
Total cases	423

Sources: CDC, Washington State DOH, Solano County DPH, Accessed 3.9.2020

# California Update

3.9.2020 8:00 AM

- 133 positive cases
  - 24 from repatriation flights
  - 44 travel-related
  - 28 person-to-person
  - 19 community acquired
  - 18 unknown sources
- 2 deaths
  - Placer – Grand Princess Cruise passenger
  - Santa Clara – Community transmission
- Counties with cases include:
  - Alameda
  - Contra Costa
  - Fresno
  - Humboldt
  - Los Angeles
  - Madera
  - Orange
  - Placer
  - Sacramento
  - San Benito
  - San Bernardino
  - San Diego
  - San Francisco
  - San Mateo
  - Santa Clara
  - Shasta
  - Solano
  - Sonoma
  - Yolo



Sources: CDPH, Santa Clara County PHD, Placer County PHD, Johns Hopkins CSSE, Accessed 3.9.2020

# California Lab Testing

3.10.2020 8:00 AM

- 15 County Public Health Labs currently testing
  - 4 more validating the test
- New protocol - only one swab per patient necessary
- FDA approval for Quest and LabCorp to develop testing, validate with state and local labs (first 5 pos/neg)
- Positive lab results for 2019 novel coronavirus are reportable under Title 17 (as of 3.9.2020)

# Local Update

3.9.2020 8:00 AM

Presumptive Positive Patients (from Grand Princess Cruise)	Confirmed Positive Patient (from Travis AFB non County Resident)	Total in Sonoma County
2	1	3

- Testing for Sonoma County residents has shifted from CDC to CPDH to our local public health laboratory.
- Sonoma County Public Health Laboratory began local testing on March 7, 2020.
- Persons under investigation have included other symptomatic Grand Princess passengers, close contacts of cases, health care workers with medium to high risk exposures to cases, and persons hospitalized with pneumonia where the cause is unknown.

# **REDCOM**

- 1. Query callers to assess travel history and infectious disease symptoms based on criteria provided by Public Health**
- 2. REDCOM has access 24/7 to on-call Health Officer for identified needs related COVID-19**
- 3. First responders awareness**

# Health Care Worker referral

## **Criteria:**

- **History of travel or contact to impacted areas or persons suspect of having COVID infection/disease and symptoms compatible with COVID infection**

## **OR**

- **Fever 100.4 degrees or greater and cough/sore throat Shortness of breath**
- **CXR compatible with infectious etiology or pneumonia**
- **Negative FLU/ RSV and Respiratory panel**
- **High risk for illness due to underlying health complications**

# Guidance for mass gatherings and schools

- State has issued guidance for canceling mass gatherings and criteria for school closure
- No evidence of community transmission in Sonoma County
  - Planning to gather evidence for future recommendations
- Providing guidance for canceling mass gatherings specific to higher risk populations
- No confirmed cases or PUIs in schools at this time

# Next steps

1. Gather epidemiologic evidence to inform guidance and policy
2. Continue all precautionary measures that are already in place and expand as necessary
3. Heightened vigilance for potential additional PUIs in the County
4. Streamlining laboratory recording, reporting and coordination between labs
5. Continue communication with stakeholders (CDC, state and local) to provide latest data and guidance
6. Continue to engage with media partners to disseminate accurate, timely messaging



# Proclamations

**Federal**

**State**

**Local**



# Public Information Update

1. **Communications teams and platforms**
2. **211 as a community resource**
3. **Health care provider guidance**



# **Communications Teams & Dissemination Platforms**

## **Current PIO structures:**

- **Virtual JIC**
- **Internal PIO Team, including DHS PIO's**

## **Information channels:**

- **County Facebook, Twitter, Nextdoor**
- **SoCoEmergency.org**
- **Supporting HR Internal communication updates**
- **Virtual Town Halls**
- **2-1-1 Sonoma Information & Referral Hotline**
- **Press releases and media inquiry response**
- **Media availability and press conferences to be used for critical updates**
- **Working with COAD**

## **All public information available in both English and Spanish**

## **Next steps:**

- **All of the above throughout this emergency**
- **Expanding video production : updates and tips to ease anxiety**
- **Additional efforts through paid media campaign including radio**

# **2-1-1 Information and Referral Hotline**

- **How 2-1-1 works**
- **Resources and information**
- **Coronavirus calls to date**
- **Outreach**

**Call, text or [211sonoma.org](https://211sonoma.org)**



# Public Health Resources:

- Providing Guidelines
- Health alerts for providers
- Hotline



# Recommended Actions

## Approve Sonoma County Operational Area Emergency Operations Plan - Pandemic Annex

### Operational Area Pandemic Plan: General Overview

- Annex to the Sonoma County Emergency Operations Plan (EOP)
- Drafted with inputs and recommendations from Operational Area stakeholders
- A living document that will be maintained by the Department of Emergency Management
- Supported by various Sonoma County Departmental Response Plans
- Highlights likely impacts of a pandemic in Sonoma County and the importance of County Continuity of Operations
- Establishes the Operational Area preparedness and response structure for a potential pandemic, including for the current COVID-19 threat
- Focus on a *Phased-Response Approach* enabling targeted interventions based on global, national and local risk assessments
- Identifies the Key Focus Areas of response with guidance on mitigation measures to best prioritize and coordinate resources from within and outside the Operational Area
- Provides guidance on post-pandemic recovery actions



# **Recommended Actions**

**Receive update Novel Coronavirus threat and current response**



# Questions

