

Sonoma County Child Welfare System Improvement Plan 2019-2024

Improvement Priority Areas

- Children and youth are placed in settings that are suited to the child's needs and case plan goals (Placement Stability).
- Children exit to permanency as quickly as possible and where appropriate.



Strategy #1

Increase the number of Intensive Services Foster Care (ISFC) placements

Action Steps

- Implement one new targeted recruitment strategy each year
- Start media campaigns targeting new caregivers
- Establishing MOUs with all providers to recruit ISFC families
- Implement Binti
- Complete a feasibility study on county run Foster Family Agency

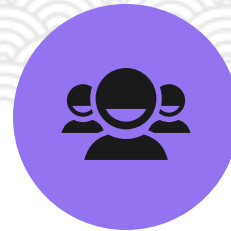


Strategy #2

Increase services and support to caregivers

Action Steps

- Conduct an evaluation of transportation services
- Increase/adjust transportation assistance based on evaluation of caregivers
- Create and implement outreach, recruitment, and retention plan for Spanish-bi-lingual service providers
- Increase the number of Spanish bi-lingual service providers
- Conduct an evaluation of local foster parent respite care
- Implement respite care plan



Strategy #3

Increase workforce capacity and CPS Social Worker retention

Action Steps

- Implement peer support group
- Develop staff training plan
- Create supervisors guide
- Develop staffing recommendations
- Finalize process map of administrative tasks and recommendations for streamlining
- Implement staffing model recommendations



Strategy #4

Implement the Core Practice Model (CPM)

Action Steps

- Finalize implementation plan
- Hold meetings at least every 6 months to ensure adoption readiness for children and families
- All Staff will attend CPM training
- All social workers will be trained on cultural humility practices

Sonoma County Child Welfare System Improvement Plan 2019-2024

Prevention Priority Areas

Children are free from abuse and neglect. Children remain in their own homes whenever possible.

- Improve low family and social worker engagement in referral and prevention services
- Align services with the Family First Prevention Services Act to access revenue for prevention services programming



Strategy#1

Improve family engagement in
Child Abuse
Prevention (CAPS) Services

Action Steps

- Implement a new program design for CAPS that focuses on engaging families quickly in prevention services
- Create and utilize a structured process to regularly review effective engagement in services.
- Create and utilize a structured process to regularly review effective engagement in services



Strategy #2

Support and develop Initial
Services Nursing Support

Action Steps

- Refine processes for nurses partnering with social workers on investigations, providing supports to families and caregivers on health issues, and working in partnership with social workers to identify Safety Plan goals that mitigate potential health and safety issues
- Work with the Family, Youth and Children's management team and Public Health Nursing team to define and build resources for the investigation of potential serious injury concerns
- Work with the Public Health Nursing team to develop written protocols for serious injury and chronic health concerns



Strategy #3

Prepare for Family First
Prevention Services Act (FFPSA)
funding

Action Steps

- Plan at least one forum for Substance Abuse providers to discuss local implementation of evidence-based practices related to Substance Abuse Treatment services
- Work with the Upstream team to review models of evidence-based prevention services that are offered locally
- Review contracted prevention services for effectiveness, quality and if they are evidence-based. Develop recommendations for future program design and capacity with a focus on alignment with evidence-based practices