



Disaster Finance Update

FEMA CLAIMS FOR 2017 FLOODS, 2017 FIRE, AND 2019 FLOODS

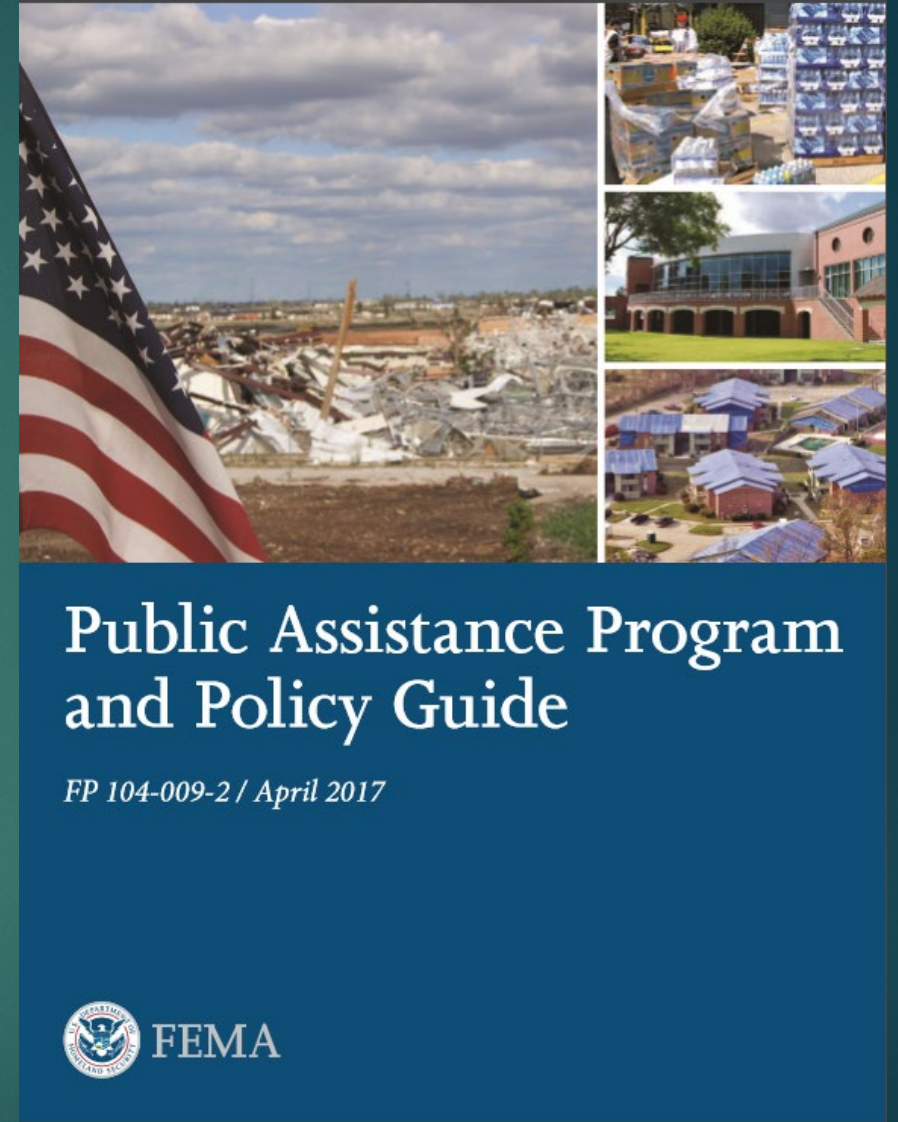
Response to Disasters



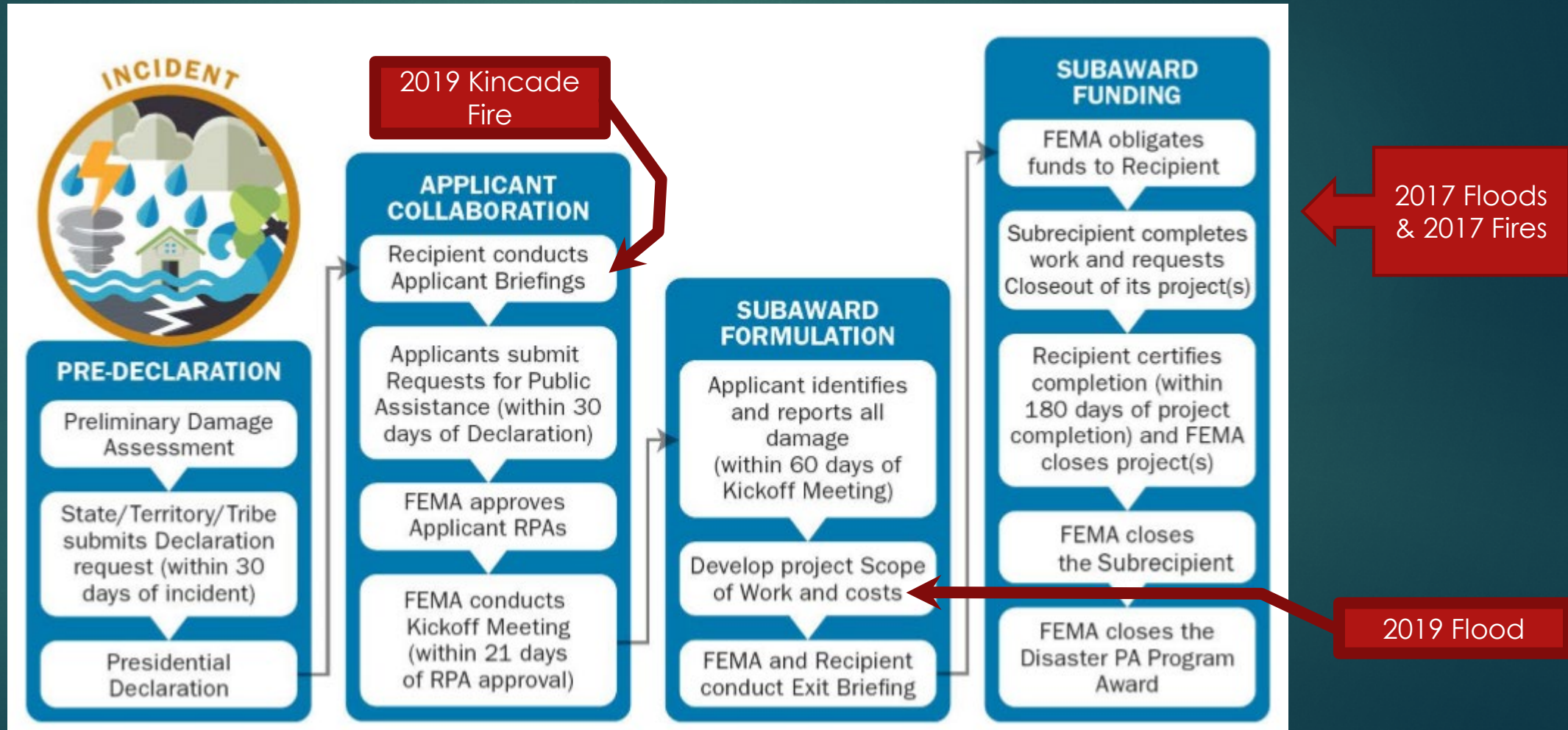
- Not covering recovery efforts, revenue loss, or economic recovery.
- Focus of this presentation is the response to 4 federally declared disasters from two 2017 Floods, 2017 Fire, and 2019 Flood.
- These costs are County (includes Water Agency and Open Space) only and do not include costs from other jurisdictions or private property.

FEMA Public Assistance Program and Policy Guide

- ▶ Great resource for information about:
 - Disaster grant claim process
 - FEMA categories
 - Procurement requirements
 - Cost eligibility
 - Documentation requirements



FEMA Public Assistance Program Process



FEMA Categories of Work

Emergency Work

Address an immediate threat:

- A** Debris removal
- B** Emergency protective measures

Permanent Work

Restoration of:

- C** Roads/bridges
- D** Water control facilities
- E** Buildings/equipment
- F** Utilities
- G** Parks, recreational, and other facilities

FEMA Reimbursement Rates

Federal Emergency Management Agency (FEMA)

Reimbursement

- Category A – Debris Removal, FEMA 75%, State 18.75%, Local 6.25%
 - 2017 Fires FEMA 90%, State 7.75%, Local 2.25%
 - Private Property Debris Removal FEMA 90%, State 10%
- Category B – Disaster Response, FEMA 75%, State 18.75%, Local 6.25%
 - First 30 days 100% approved for 2017 Fires
- Categories C – G permanent projects FEMA 75% / State 18.75%, Local 6.25%



FEMA Funding

FEMA projects are created as a Small or Large project based on annually adjusted project thresholds amounts (Threshold Approx. \$120k - \$128k)

▶ Small Projects

- ▶ Based on project estimated costs below annual threshold
- ▶ FEMA releases funding when project approved

▶ Large Projects

- ▶ Initial funding based on project estimated costs over annual threshold
- ▶ FEMA releases funding when project approved
- ▶ Final project costs based on Actual costs and additional fund could be approved at closeout

FEMA Funding

► Project Funding Distribution

- FEMA releases all approved funds based on project costs to State (Cal-OES) as the Recipient
- Cal-OES releases funds to County as the Sub-recipient
 - Small Projects:
 - Full funds released based on estimated amounts.
 - County prepares overrun/underrun analysis when all small projects completed. County may receive additional funds or be required to pay back funds
 - Large Projects:
 - Full funds released for projects 100% complete at time of project approval.
 - County must request funds from Cal-OES for projects less than 100% complete. Cal-OES will release up to 90% costs incurred of project funding received. Remaining 10% released at project close-out and final actual costs provided



Overview of the FEMA Claim Process Sonoma County Events

2017 January and February Floods County Costs:

- ▶ \$16.3M Damage to property/infrastructure
 - ▶ \$ 1.3M Response costs (EOC, DOC, Shelters, Mutual Aid)
 - ▶ \$ 1.4M Debris Removal costs (County Debris Removal)
-
- ▶ **\$19.0M Total County Costs**

Overview of the FEMA Claim Process Sonoma County Events

2017 January & February Costs Reimbursable:

- ▶ \$13.6M FEMA and State
 - ▶ \$ 2.1M received to date
 - ▶ \$11.5M expected
- ▶ \$3.2M Insurance and FHWA
 - ▶ \$0.4M Insurance expected
 - ▶ \$2.8M FHWA expected

▶ **\$16.8M Total Cost Reimbursable**

2017 January & February Costs Not Reimbursable:

- ▶ \$2.2M County Share

▶ **\$2.2M Total Costs Not Reimbursable**

\$19.0M Total Reimbursable and Not Reimbursable

Project Updates – Parks

- ▶ 2017 January and February Floods
 - ▶ **Cat. A Debris Removal:** 100% Complete – *Pending FEMA Approval, included in countywide claim*
 - ▶ **Cat. B Emergency Protective Measures:** 100% Complete – *Pending FEMA Approval; included in countywide claim*
 - ▶ **Cat. C Permanent Work:** 0 sites



Project Updates - Transportation and Public Works

- ▶ 2017 January and February Floods
 - ▶ **Cat. A Debris Removal:** 100% Complete – *Pending FEMA Approval and Funding*
 - ▶ **Cat. B Emergency Protective Measures:** 100% Complete – *Pending FEMA Approval and Funding*



Project Updates - Transportation and Public Works

- ▶ 2017 January and February Floods (cont'd.)
 - ▶ **Cat. C Permanent Work:**
 - ▶ Estimated at \$5.9M
 - ▶ 17 total sites.
 - ▶ All FEMA sites are in the design phase except King Ridge Road. FHWA sites and King Ridge Road are still pending design. - *Pending FEMA/FHWA Approval and Funding*



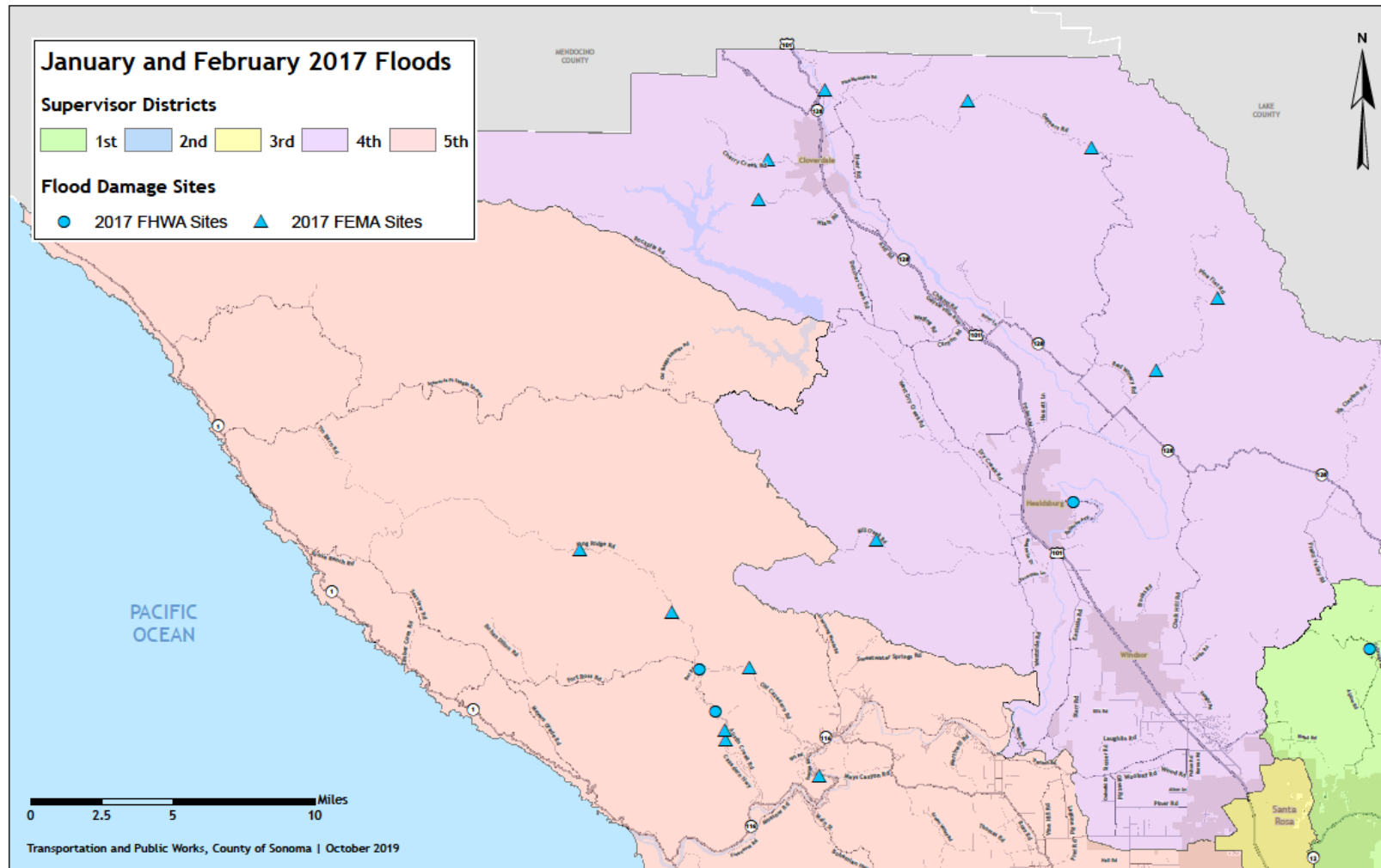
Project Updates - Transportation and Public Works

► 2017 January and February Floods (cont'd.)

► Cat. C Permanent Work:

Funding	Site	Design	Construction
FHWA	N. Fitch Mountain (2 sites)	Winter 2020	2021
FHWA	Calistoga Road	Winter 2020	2022
FHWA	Cazadero Hwy (2 sites)	Summer 2020	2022
FEMA	Old Monte Rio Rd.	Complete	2020
FEMA	Old Cazadero Rd.	Winter 2019	2020
FEMA	Geysers Rd. (3 sites)	Spring 2020	2020
FEMA	Cazadero Hwy (2 sites)	Spring 2020	2020/21
FEMA	Pine Flat Rd.	Spring 2020	2020/21
FEMA	Mill Creek Rd.	Spring 2020	2020/22
FEMA	Cherry Creek Rd.	Spring 2020	2020/23
FEMA	King Ridge Rd. (2 sites)	Spring 2020	2020/24

Project Updates - Transportation and Public Works – 2017 Flood Sites



Project Updates – Sonoma Water

Mirabel Rubber Dam Repair (CAT D)



- ▶ 2017 Floods – 4 Projects
 - ▶ CATEGORY A: debris removal (2)
 - ▶ CATEGORY C: road repair (1)
 - ▶ CATEGORY D: water control facility repair (1)
- ▶ All projects 100% complete
- ▶ \$400k eligible costs; \$250k received
- ▶ Next Steps:
 - ▶ Receive final reimbursements
 - ▶ Project Close-out

Green Valley Creek Debris Removal (CAT A)



Overview of the FEMA Claim Process Sonoma County Events

2017 Sonoma Complex Fires County Costs:

- ▶ \$25.9M Damage to property/infrastructure
- ▶ \$42.7M Response costs (EOC, DOC, LAC, Shelters, Mutual Aid)
- ▶ \$8.8M Debris Removal costs (Private Property Right of Entry Costs, County Debris Removal, Private Property Debris Removal Insurance Recovery Costs)

- ▶ **\$77.4M Total County Costs**

Overview of the FEMA Claim Process Sonoma County Events

2017 Fires Cost Reimbursable:

- ▶ \$34.3M FEMA and State
 - ▶ \$14.1 Received to Date
 - ▶ \$20.2 Expected
- ▶ \$4.7M Insurance
 - ▶ \$3.6M Received to Date
 - ▶ \$1.1M Expected

▶ **\$39.0M Total Cost Reimbursable**

2017 Fires Costs Not Reimbursable:

- ▶ \$800K County Share
- ▶ \$20M Unclaimable Labor (straight pay)
- ▶ \$1.6M Ineligible Costs (services/supplies)
- ▶ \$16M FEMA Under Appeal (PPDR damaged roads)

▶ **\$38.4M Total Costs Not Reimbursable**

\$77.4M Total Reimbursable and Not Reimbursable

Project Updates – Parks

► 2017 Fire

- **Cat. A Debris Removal:** 100% Complete – *Pending FEMA Approval; included in countywide claim*
- **Cat. B Emergency Protective Measures:** 100% Complete – *Pending FEMA Approval; included in countywide claim*
- **Cat. C Permanent Work:**
 - Insurance Claim for numerous projects at 6 Parks –
 - Crane Creek Regional Park, Hood Mountain Regional Park, Schopflin Fields, Sonoma Valley Regional Park, Tolay Lake Regional Park, Shiloh Ranch Regional Park
 - Repairs 98% Complete, minor trail work remaining for Spring 2020
 - Parks managing 1 FEMA Culvert Replacement Project for Ag + Open Space
 - At Mark West Creek Regional Park & Open Space Preserve
 - Engineering complete, permitting in progress, repair by Summer 2020

Hood Creek Bridge
Hood Mountain Regional Park



Project Updates - Transportation and Public Works

► 2017 Fire

- **Cat. A Debris Removal** – Tree removal: In progress. FEMA Approved – *Pending FEMA/Cal-OES funding*
 - \$1.3M Costs to date
 - Phase I: 560 trees – 100% Complete
 - Phase II: 2,794 trees – 50% Complete
 - Phase III: 2,100 trees – 0% Complete
- **Cat. B Emergency Protective Measures:** Push and clear efforts to provide emergency access to roadway immediately following the fires – \$172K total costs. 100% Complete – *Funding Received*



Project Updates - Transportation and Public Works

- ▶ 2017 Fire (cont'd.)
 - ▶ **Cat. C Permanent Work** – 7 Projects (4 small, 3 large)
 - ▶ Countywide Lighting - \$64K costs to date. 72% Complete
Funding Released at Project Completion
 - ▶ Culvert Replacement (2) – \$17K total costs. 100% Complete
Funding Received
 - ▶ Guardrail Replacement (Countywide) – \$234K total costs. 100% Complete
Funding Received
 - ▶ Retaining Wall Replacement – \$5K total costs. 100% Complete
Funding Received
 - ▶ Replacement of burned signs and posts (Countywide): \$85K total costs. 100% Complete
Funding Received
 - ▶ Sidewalks, Curbs, Gutter, Retaining Wall, and PPDR damaged Roads: \$49K costs to date. 5% Complete
Pending FEMA Approval and Funding



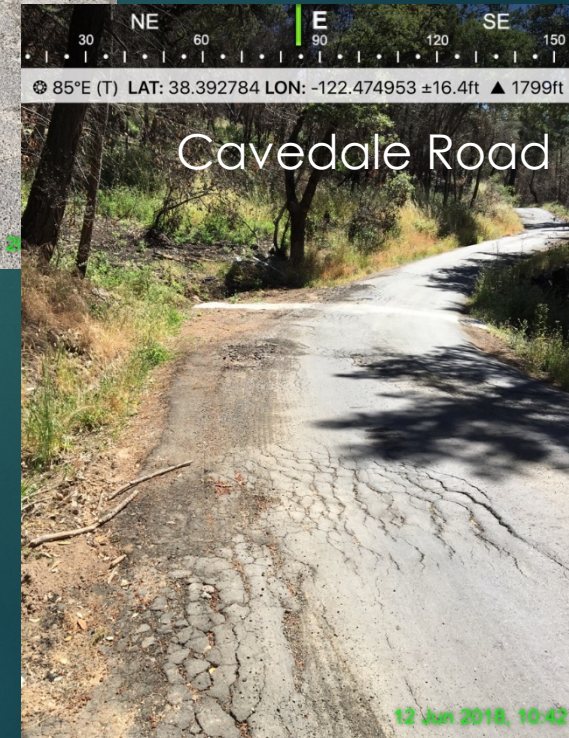
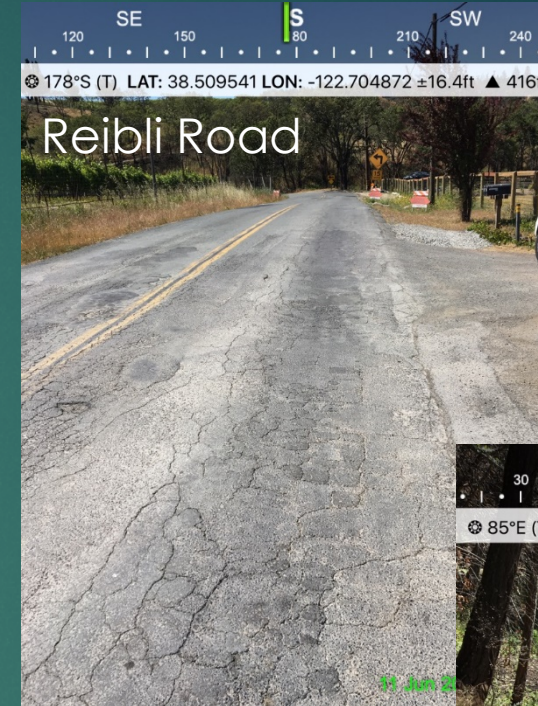
Project Updates - Transportation and Public Works

- ▶ 2017 Fire (cont'd.)

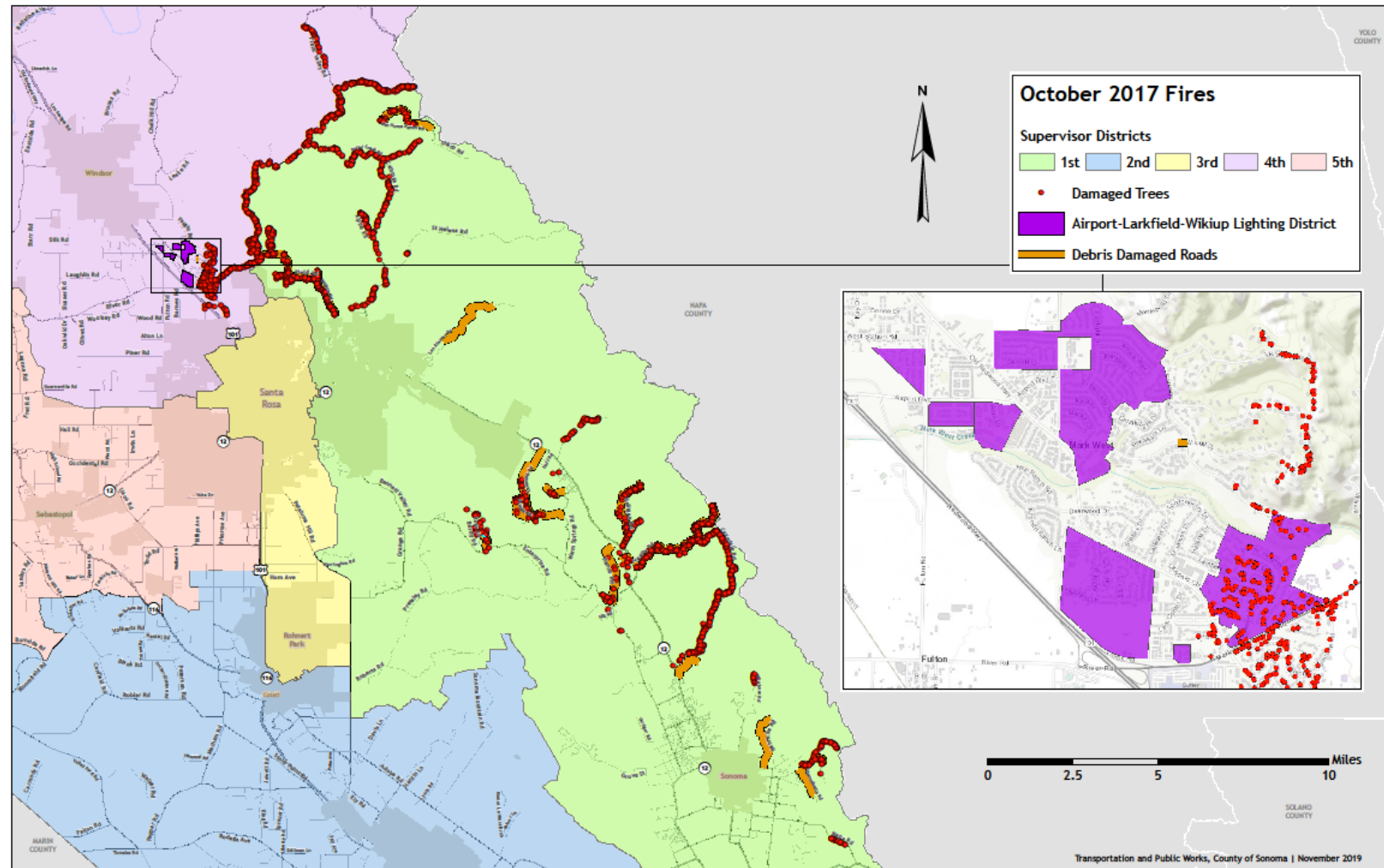
- ▶ **Cat. C Permanent Work**

- Private Property Debris Removal Damaged Roads**

- ▶ 32 sites approx. \$16M – 21M in estimated damaged to County Roads due to the Private Property Debris Removal Program
 - ▶ FEMA issuing a Determination Memo stating damaged roads are ineligible. County appealing decision



Project Updates - Transportation and Public Works - 2017 Fire



Overview of the FEMA Claim Process Sonoma County Events

2019 Late February Storms:

- ▶ \$47.8M Damage to property/infrastructure
- ▶ \$24.4M Response costs (EOC, DOC, LAC, Shelters, Mutual Aid)
- ▶ \$5.7M Debris Removal costs (County Debris Removal)

- ▶ **\$77.9M Total County Costs**

Overview of the FEMA Claim Process Sonoma County Events

2019 Late February Storms Reimbursable:

- ▶ \$58.1M FEMA and State
 - ▶ \$58.1M Expected
- ▶ \$1.6M Insurance
 - ▶ \$1.6M Expected
- ▶ \$12.9M FHWA Roads
 - ▶ \$12.9M Expected

▶ **\$72.6M Total Cost Reimbursable**

2019 Late February Storms Not Reimbursable:

- ▶ \$3.7M County Share
- ▶ \$900K Unclaimable Labor (straight pay)
- ▶ \$760K Ineligible Costs

▶ **\$5.3M Total Costs Not Reimbursable**

\$77.9M Total Reimbursable and Not Reimbursable

Project Updates – Parks

► 2019 Floods

- **Cat. A Debris Removal:** 100% Complete – *Pending FEMA Approval – included in countywide claim*
- **Cat. B Emergency Protective Measures:** 100% Complete – *Pending FEMA Approval – included in countywide claim*
- **Cat. G Permanent Work:**
 - 1 site. Engineering complete, and completion is anticipated in early 2020 - summer 2020. - *Pending FEMA Approval and Funding*



Project Updates - Transportation and Public Works



Mays Canyon Road

► 2019 Floods

► Cat. A Debris Removal:

- **Solid Waste:** \$2.5M Actual costs. 100% Complete **Pending FEMA review**

► Vegetative/Road Debris:

- Estimated at \$3M
- 83% Complete – Two remaining sites at Skaggs Springs Stewarts Point Road and Bohemian Highway.

Pending TPW review and permitting for debris removal sites

► Cat. B Emergency Protective Measures:

- Costs to perform emergency Transit evacuations \$6.4K total costs – 100% Complete **Funding Received**
- Emergency roadway assessment, barricading, closure, and re-opening - \$876K actual costs. 100% Complete **Pending FEMA review**
- Emergency protective measures to prevent further failure of 7 sites and 3 roads during the next winter season – Estimated at \$6M. 5% Complete **Pending FEMA review**

Project Updates - Transportation and Public Works

- ▶ 2019 Floods (cont'd)
 - ▶ **Cat. C Permanent Work** – Estimated at \$40M. 45 FEMA sites that include slip outs, culvert replacement, stabilization, and washouts on various roads – 10% Complete *Pending FEMA review*
 - ▶ **Cat. C Permanent Work** – Skaggs Springs Road. No current estimates - debris must be removed before technical work can be performed- 0% Complete *Pending FHWA review*

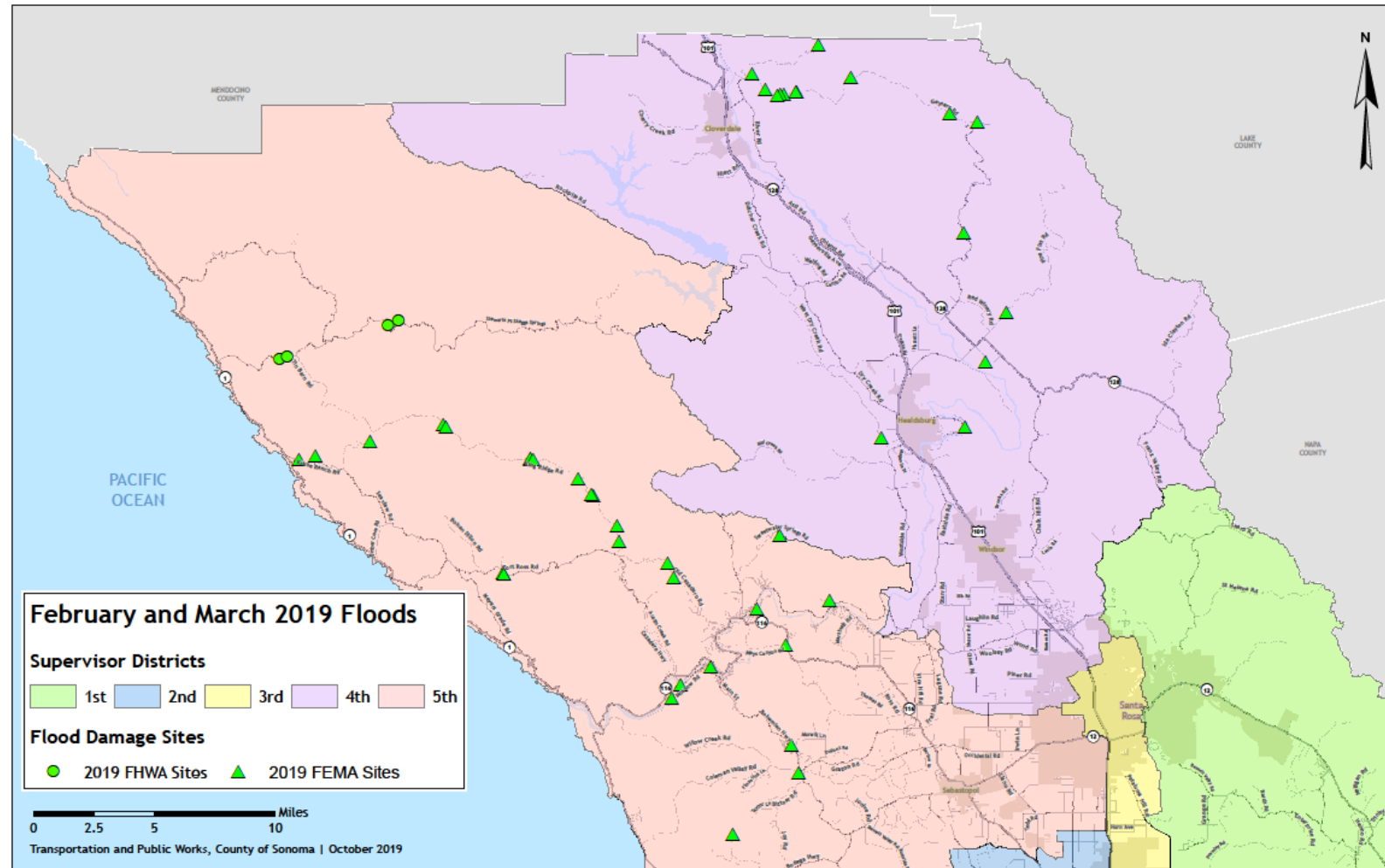


Skaggs Springs Stewarts Point Rd.



Guerneville

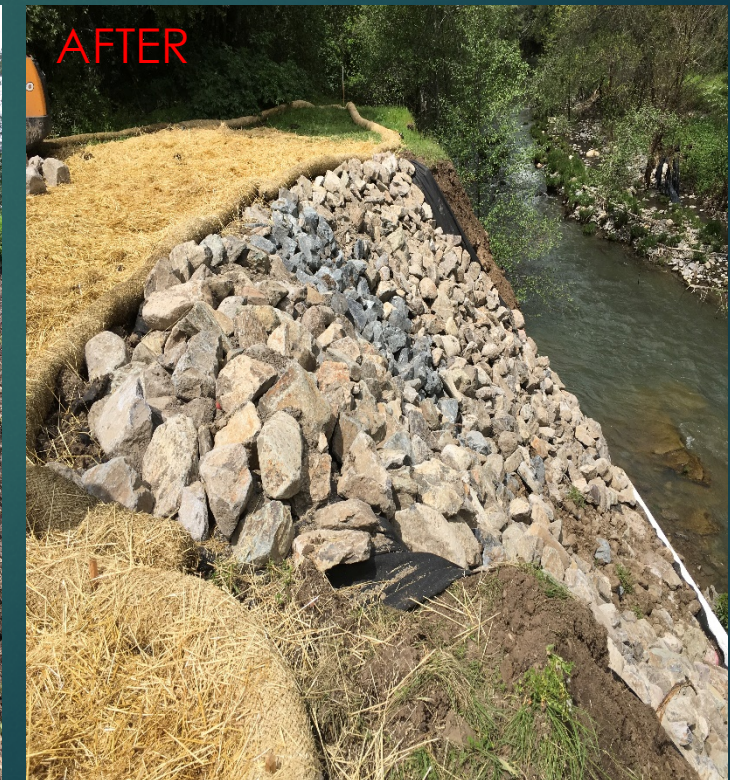
Project Updates - Transportation and Public Works – 2019 Flood Sites



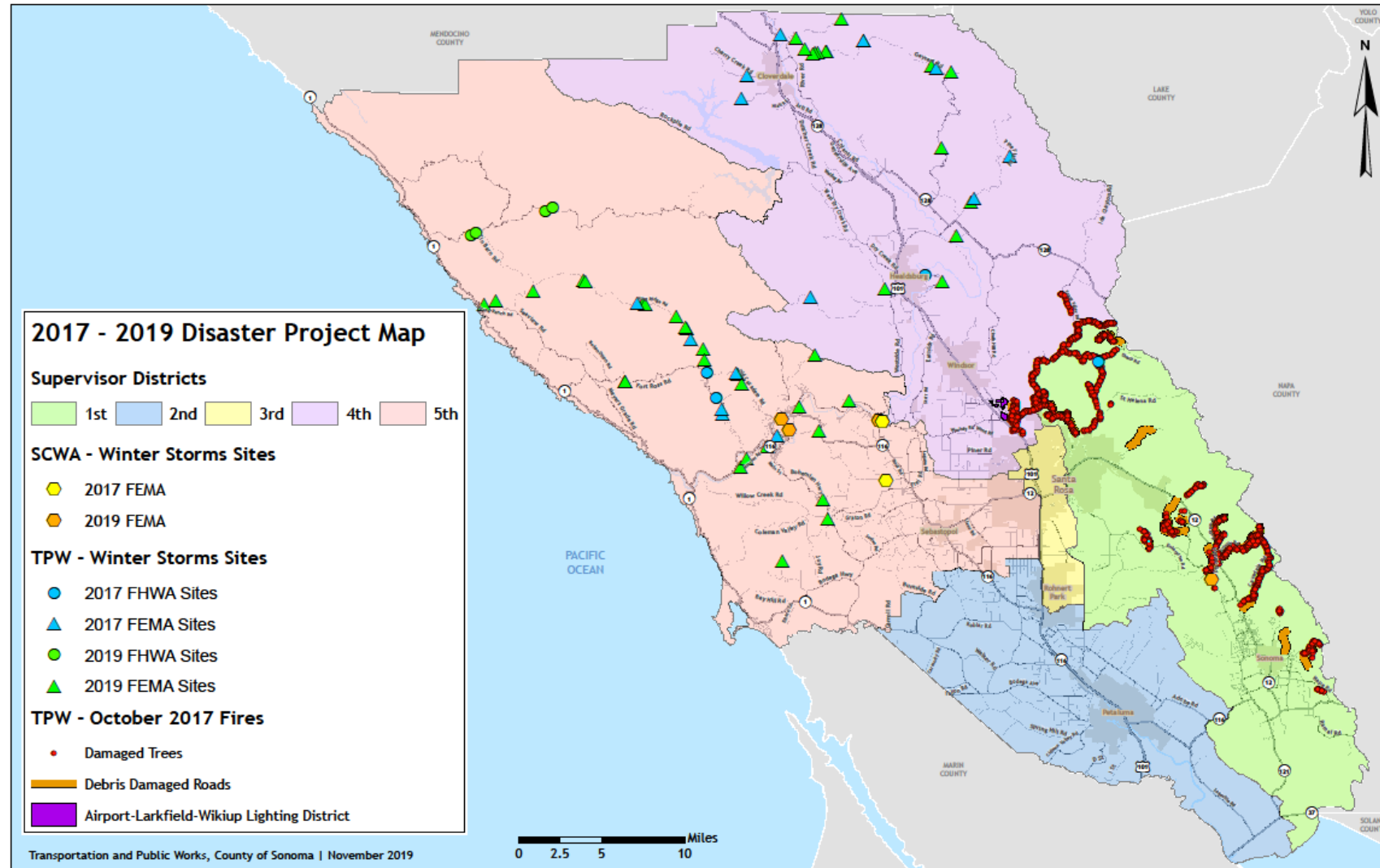
Project Updates – Sonoma Water

- ▶ 2019 Floods – 5 Projects
 - ▶ CATEGORY B: emergency protective measure (1)
 - ▶ CATEGORY C: road repair (2)
 - ▶ CATEGORY E: equipment repair/replacement (1)
 - ▶ CATEGORY F: utility repair (1)
- ▶ 4 projects 100% complete
- ▶ Remaining Project:
 - ▶ Large slide at Mays Canyon access road to Russian River Treatment Plant = \$2M project
- ▶ \$3M eligible costs; \$0 received
- ▶ Next Steps:
 - ▶ Complete remaining project
 - ▶ Complete documentation for FEMA
 - ▶ Receive Reimbursements
 - ▶ Project Close-out

Sonoma Valley County Sanitation
District, Emergency Protective
Measure (CAT B)



2017 Flood, 2017 Fires and 2019 Flood Disaster Sites



Summary of Sonoma County Events FEMA Claims

Sonoma County Active Public Assistance Claims

Event Name:	Estimated Costs:	Expected Reimbursements:	Reimbursements Received: (To Date)	Remaining Reimbursement to be Recieved:	County Costs Not Reimbursable:
2017 Floods	\$19.0M	\$16.8M	\$2.1M	\$14.7M	2.2M
2017 Sonoma Complex Fires	\$77.4M	\$39.0M	\$14.1M	\$24.9M	38.4M
2019 Late February Storms	\$77.9M	\$72.6M	-	\$72.6M	5.3M
<u>Totals:</u>	<u>\$174.3M</u>	<u>\$128.4M</u>	<u>\$16.2M</u>	<u>\$112.2M</u>	<u>\$45.9M</u>

Combined Totals from Sonoma County, Sonoma County Water Agency, and
Sonoma County Agricultural Preserve and Open Space

Disaster Financial Management

“Effective disaster financial management is critical for successful response and recovery. It helps jurisdictions obtain the resources needed to support their community, increases the efficiency of recovery efforts, and reduces the likelihood of audits and financial penalties for the jurisdiction. Fiscal and grant regulations are strict and apply to all jurisdictions, regardless of size, so it is imperative that all jurisdictions have robust scalable, flexible, and adaptable disaster financial management plans and 7 processes in place pre-disaster for all types of incidents.”

-FEMA Disaster Financial Management Guide

- ▶ 4 Open Public Assistance Programs in Process
 - ▶ Over \$174M in Disaster Related Costs since January 2017
(Not including new Kincade Fire event)

Disaster Financial Management

- ▶ Emergency Operations Center (EOC)
 - ▶ Finance Section Chief Responsibilities
 - ▶ Coordinate and Work with County Departments and Operational Area Jurisdictions to Development and Report Initial Damage Estimates (IDE) to Applicable Parties
- ▶ Cost Recovery
 - ▶ Work with FEMA and Cal-OES to identify reimbursement opportunities
 - ▶ Work with County Department partners to develop Project costs and scope
 - ▶ Review documentation for compliance to ensure eligibility requirements are met
 - ▶ Manage Multiple Disaster Funds

Disaster Financial Management

- ▶ Project Management

- ▶ Work with Multiple County and Non-County Agencies to manage projects, timelines, and public assistance claims

- ▶ Federal and State Reporting and Audits

- ▶ Ensure County compliance to minimize Disallowance

- ▶ Training

- ▶ Develop training tools to better prepare County Departments and County Jurisdictions
 - ▶ Review Federal and State regulations and policies/procedures to ensure County is current in compliance

Disaster Finance Update

Questions?