



Kincadee Fire Update

Sonoma County Board of Supervisors

October 31, 2019

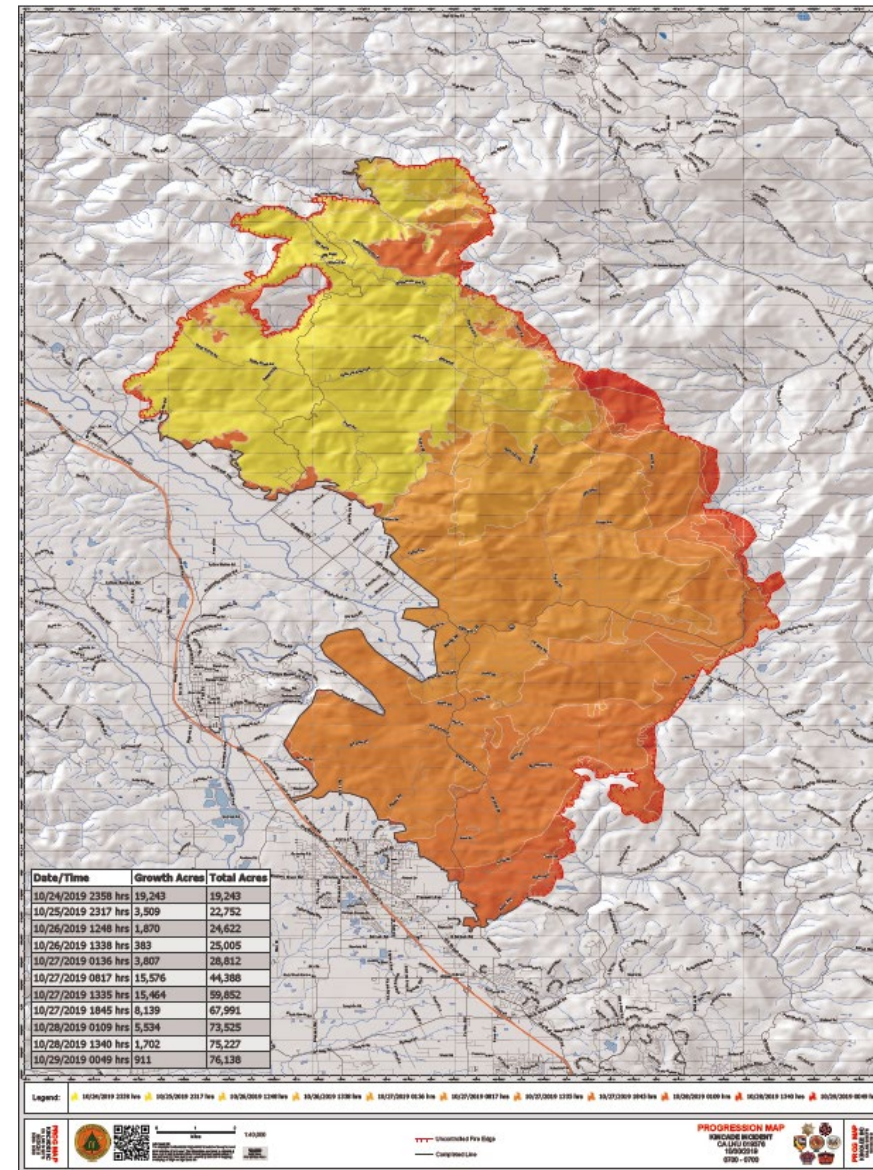
Kincade Fire Information



- 76,825 Acres
- 266 Structures Burned
- 133 Residential
- 45% Containment as of 10/30
- 5,245 Personnel Assigned
- Hurricane Force Winds
 - 103 mph gust, Pine Flat Rd, 10/27

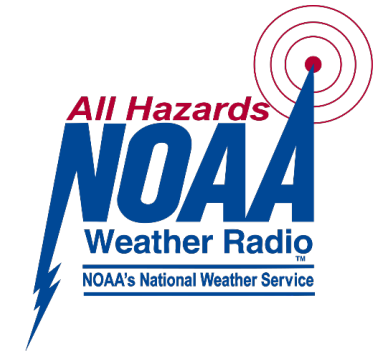


Fire Information



Alert & Warning System

- Wireless Emergency Alerts
 - Kincade Fire: 15
- SoCoAlert
 - Kincade Fire: 26
 - PG&E Power Shutoff: 5
- Emergency Alert System (EAS)
- NOAA Weather Radio
 - Kincade Fire: 2
- Nixle
- Hi/Lo Sirens

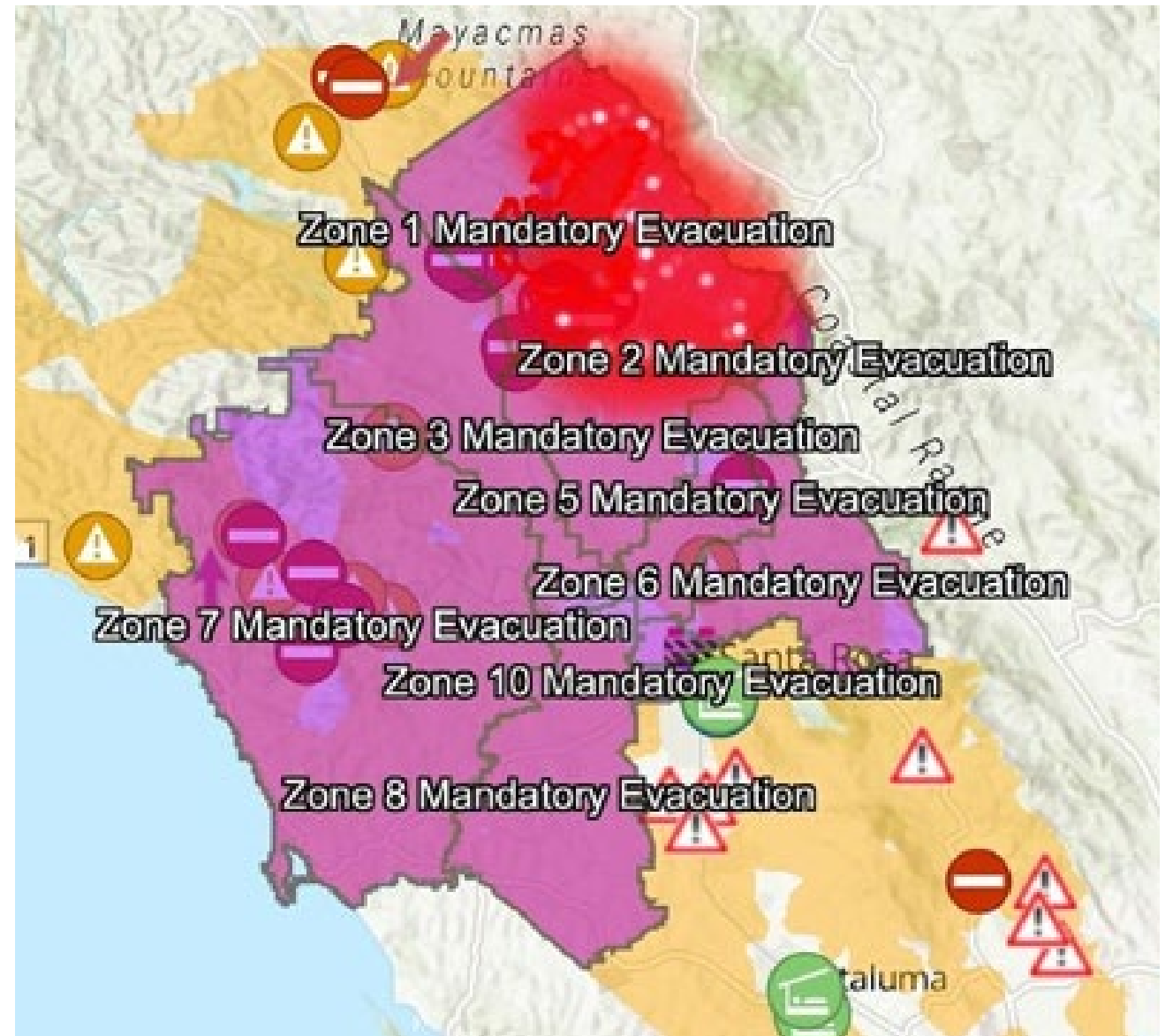


Evacuation Zones

County Evacuation Planning

Kincade Fire Incident Map

- 9M Views



Shelters

- 20 Shelters
- Shelter Capacity: 4,850
- Peak Shelter Count: 3,092
 - Animal-friendly
 - Petaluma and Santa Rosa Fairgrounds
 - Over 700 Large Animals



| | 10/26 | 10/27 | 10/28 | 10/29 | 10/30 |
|----------------|-------|-------|-------|-------|-------|
| Shelter Counts | 1168 | 2190 | 3092 | 2552 | 2229 |



Public Information

- **237** Twitter posts
- **212** Facebook posts
- **22** Nextdoor posts
- **35** videos
- **22** Nextdoor posts
- **2,193** calls and 358 texts to 2-1-1
- **107** media interviews with local and national news
- **SoCoEmergency.org** - side-by-side bilingual information

The Westphal Family will be carving pumpkins in their Coffey park home tonight(dad Jonathan with Jackson and Hudson; mom Christine is not pictured)



Pacific Gas and Electric

- PSPS Restoration Status
- Gas Restoration Status
- PG&E Incident Team Response
- Burn Area Damage Assessment
 - Make Safe Status
 - Repairs Status



Continuity of Operations (COOP) Team

- Ensure critical services continue during disaster
 - Early voting, critical child support services, homeless outreach and placement, Health and Human Services Support
- Set up alternate work sites for 128 critical staff outside of the evacuation zone
- Prepare buildings for re-entry - estimated 1 1/4
- County Disaster Service Workers - over 50%



Human Resources

- Approx. 55% of County workforce (1,800) supporting emergency operations and Continuity of Operations Essential Public Services
- Approx. 27% of County workforce (875) live within evacuation zones
 - Many are emergency responders and providing public services
- Appears some County workforce are within fire perimeter and/or very close.



Finance

- PG&E PSPS Events
 - Labor and other Expenses: Approx. \$1M
- Kincade Fire Response: Approx. \$5M
 - Labor: \$2.1M
 - Mutual Aid: \$2.5M
 - Expenses: \$425K
 - Estimated Claimable Emergency Response Costs: Approx. \$3.6M
 - CDAA 75%: \$2.7M
 - County Share 25%: \$900K



Recovery

- Planning for Recovery Began on Day 1!
 - Management
 - Watershed Protection
 - Local Assistance Center
 - Public Facilities
 - Business Recovery and Continuity



Questions

