

AGP16-0019

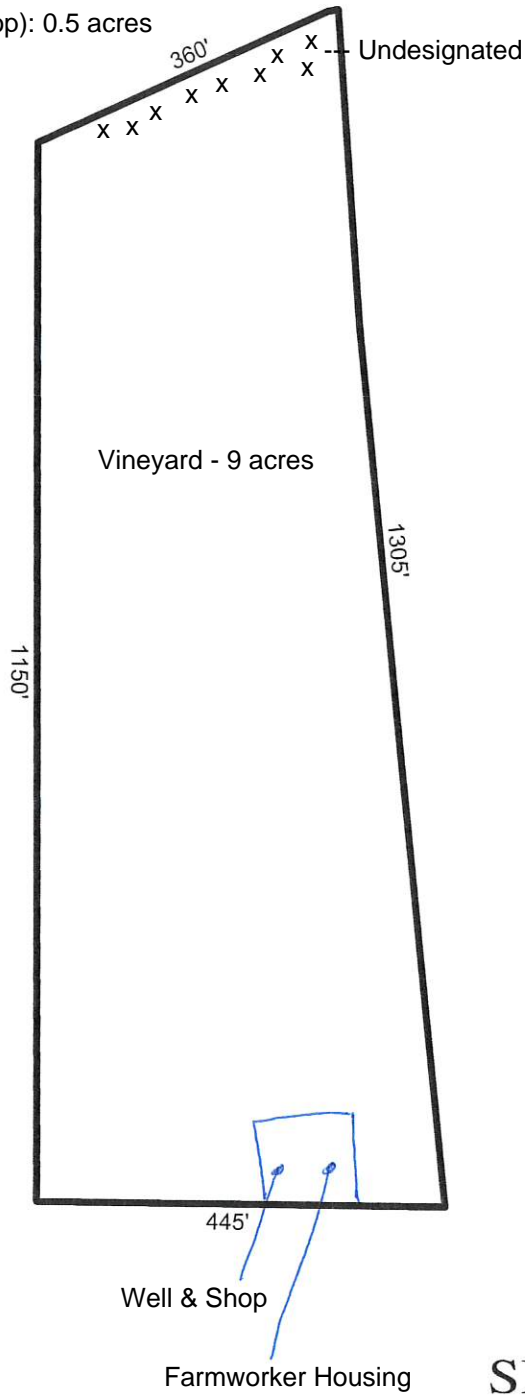
22425 Geyserville Ave., Geyserville

10.46 Acres Total

Prime Agriculture (vineyard): 9 acres

Compatible Uses (well, ag housing, shop): 0.5 acres

Undesignated Land: 0.96 acres



**MAPPING NOTE**

PROPERTY LINES ARE APPROXIMATE (PROTRACTED FROM ASSESSOR DATA).

**SITE PLAN**

APN 140-210-005

22425 Old Redwood Highway, Geyserville



**LAND SURVEYORS**

632 PETALUMA AVE. SEBASTOPOL, CALIFORNIA 95472 / (707) 829-0400

12/08/2016