

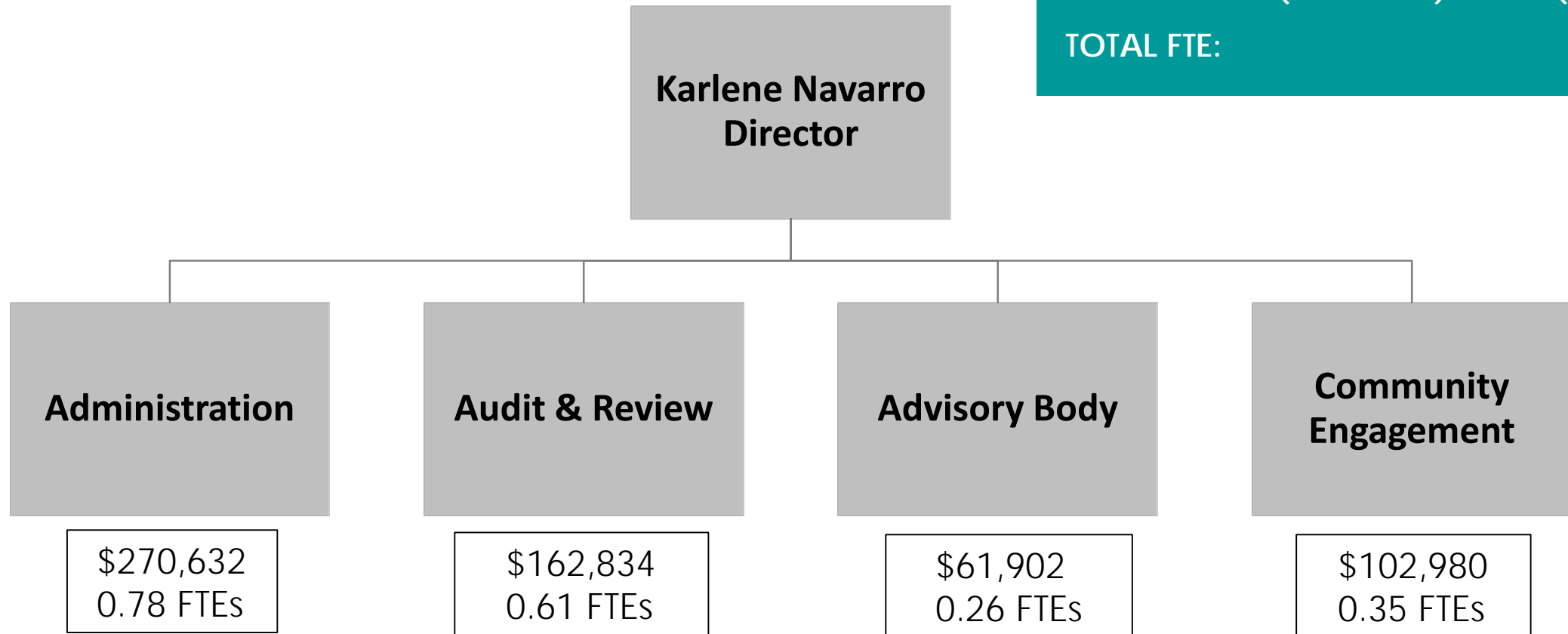
Independent Office of Law Enforcement Review and Outreach (IOLERO)



Administrative Support and Fiscal Services

Department Overview

FY 2018-19 ADOPTED:	\$562,322
FY 2018-19 REVISED:	\$575,152
FY 2019-20 PRELIMINARY:	\$549,793
NET CHANGE (PRE – REV):	(\$12,529)
TOTAL FTE:	2.0



Department

Key Operational Challenges and Opportunities

- Transition from IOLERO's previous FTE's to the new FTE's without any overlap in employment or transition memoranda about day to day operations of the office.
- Establish a relationship of trust and communication between the new IOLERO director and stakeholders such as the Sheriff's Office and Community Advisory Council.
- Design an electronic case management system to track IOLERO case files including client name, contact information, summary and status of case.



Department

Key Operational Challenges and Opportunities, Continued

- Consult with a professional survey agency to design an effective, neutral, statistically reliable survey in order to gather the opinions and viewpoints of the Sonoma County community-at-large regarding ongoing relations with the Sheriff's Office (SO) and IOLERO since the establishment of IOLERO, recent policy changes by the SO, the implementation of body worn cameras by the SO, and other outreach efforts by the SO and IOLERO.
- Identify sources of outside funding for ongoing operations.
- Identify opportunities to collaborate between departments, non-profits and other jurisdictions to improve productivity and service levels that are consistent with the mission of IOLERO.



Department Reduction Impacts

- Reduced IOLERO services and supplies by \$48,663, or 31% from the prior year adopted budget. The majority of this reduction will impact IOLERO's "Other Contract Services."
- The most significant impact of the reduction is IOLERO's contract with Restorative Resources. Restorative Resources provides services to at-risk middle school students in Sonoma County to prevent future negative contacts with law enforcement and the criminal justice system by developing skills in the areas of accountability, empathy and conflict-resolution.
- Collaboration with Restorative Resources will be significantly reduced and the contract will likely terminate early resulting in IOLERO no longer participating in this proactive, youth-focused community outreach program.
- Current departmental objectives such as the development of a case management system, county-wide survey and new youth-focused outreach may also be impacted by the reduction.

