

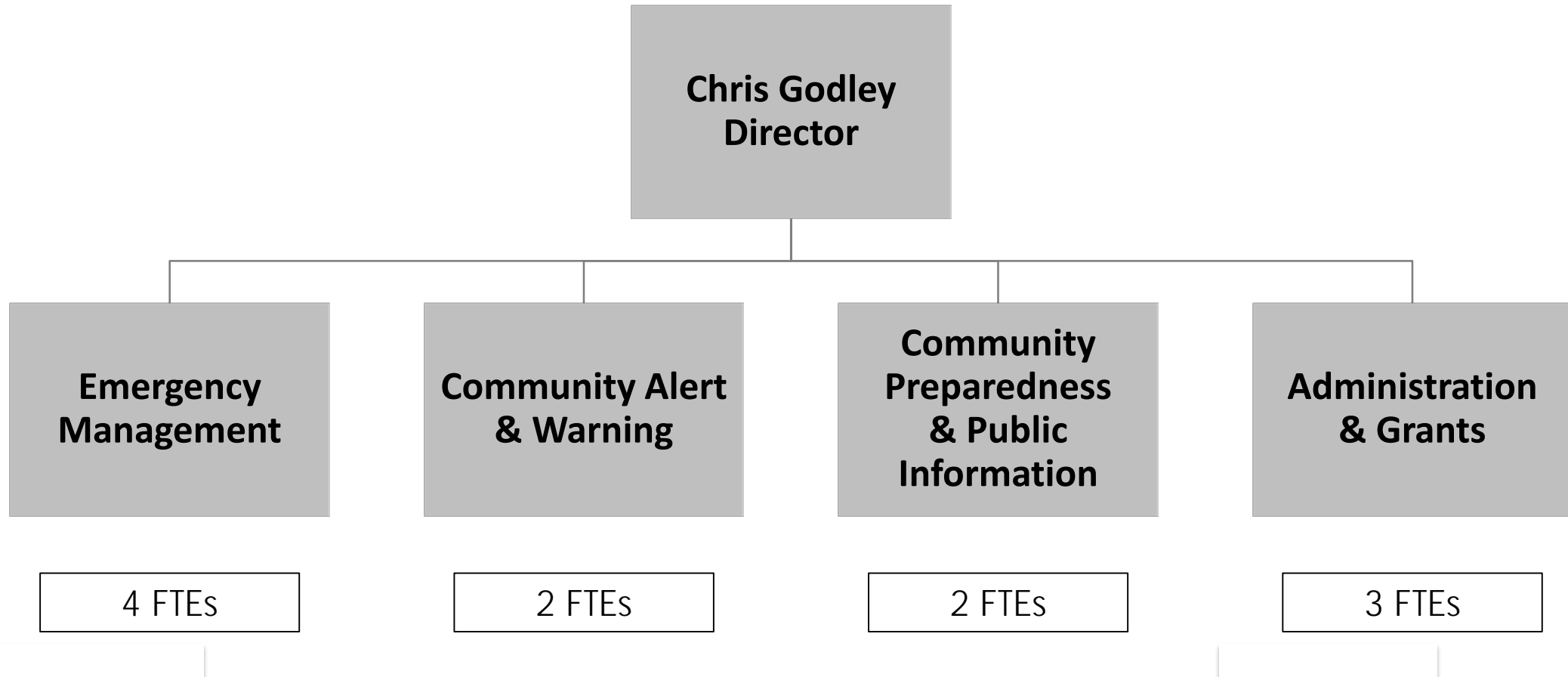


# Department of Emergency Management



# Department Overview

FY 2019-20 RECOMMENDED: \$2,575,000  
TOTAL POSITIONS: 12      TOTAL FTE: 12



# Department

## Key Operational Challenges and Opportunities

- Implementation of Board Identified Priority Programs:
  - Community Alert & Warning
  - Community Preparedness
  - Community Evacuation Planning
  - County Emergency Staff Development
  - Continuity of Operations Plan (COOP)



# Department

## Key Operational Challenges and Opportunities, Continued

- Actual costs will not be fully realized until the end of FY 2019-20
- Administrative staff is assisting with the wind down of the Fire and Emergency Services Department
- Potential state and federal grant funding opportunities
- Opportunity to partner with smaller departments to provide administrative and fiscal support services
- Potential collaboration/funding with cities via shared services delivery model



# Recovery and Resiliency Framework Efforts

- CP1.1 Develop a warning system that communicates alerts over many communication systems and to individuals and others with access & functional needs**
- CP1.2 Establish an on-line portal that consolidates critical first responders' and community partner information
- CP1.3 Develop protocols and partnerships for communicating critical information to elected officials, government and community leaders, and the public
- CP2.1 Assess and update overall County emergency procedures, programs, organization, authorities, infrastructure, staffing, equipping, and processes
- CP2.2 Assess and review administrative and functional placement of the Emergency Management Program
- CP2.3 Expand trainings and drills for countywide emergency managers, mutual aid partners, elected officials, and County staff



# Recovery and Resiliency Framework Efforts

CP2.5 Review Sonoma County Operational Area Emergency Council

CP3.1 Collaborate with volunteer, non-profit and private organizations to establish community working groups

**CP3.2 Work with community/neighborhood liaisons to identify hazards, risks, mitigation strategies, including evacuation routes**

CP3.3 Develop community response team programs

CP4.1 Identify essential infrastructure, services and resources necessary during a disaster and have agreements in place

CP4.6 Work with private utility providers for solutions to hardening infrastructure and coping with destroyed utilities

