



# FY 2019-20 Preliminary Budget

## Justice Services

# District Attorney



Justice Services

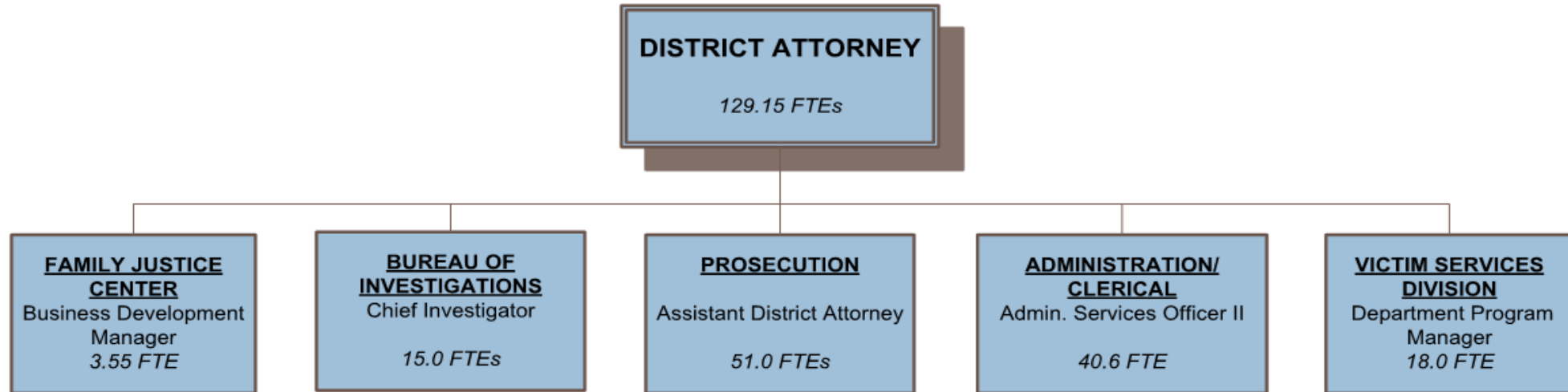


# Department Overview

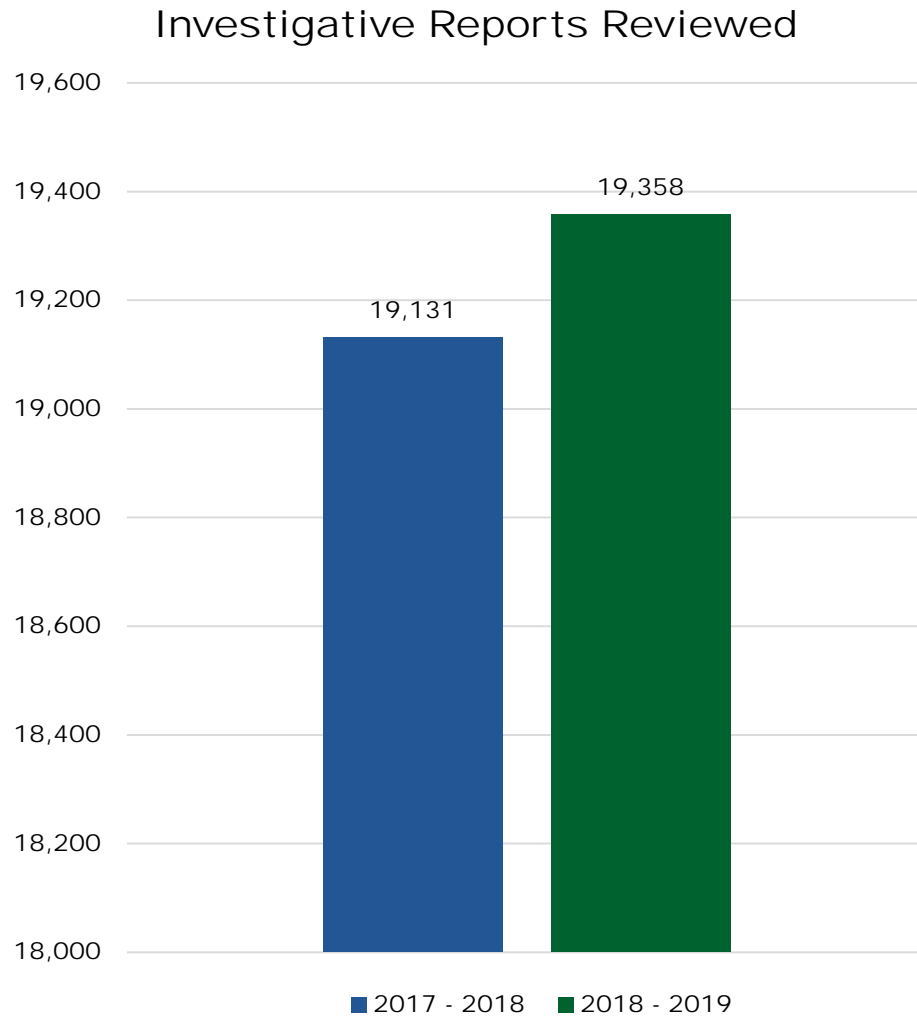


COUNTY OF SONOMA  
**OFFICE OF THE DISTRICT ATTORNEY**  
*ORGANIZATION CHART*

FY 2018-19 ADOPTED: \$28,913,673  
FY 2018-19 REVISED: \$29,320,673  
FY 2019-20 PRELIMINARY: \$28,828,063  
NET CHANGE (PRE – REV): (\$85,610)  
TOTAL POSITIONS: 129.15



# Investigative Reports Reviewed



## Increase in Cases Received

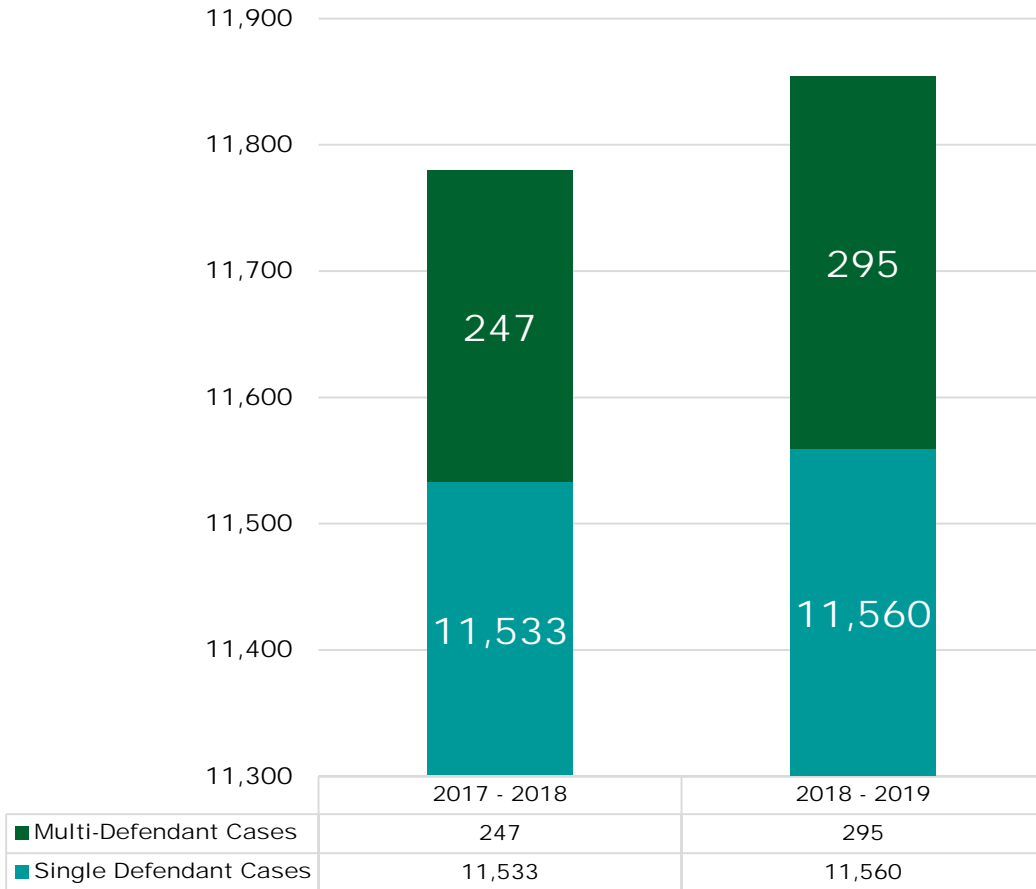
- Crime not going down
- Marijuana

## More Complicated Cases

- 25% increase in Multi-Defendant Cases



# Cases Filed in Court



- Increase in Felony Cases
- Increase in Multiple Defendant Cases
- 164,888 Court Appearances

## Notable Changes in Charges Filed with the Courts:

- 21.1% increase in Assault an Battery Charges
- 18.8% increase in Domestic Violence Charges
- 22.7% increase in Sexual Assault Charges
- 15.9 % increase in Elder/Adult Dependent Abuse Charges



# Sonoma County Driving Under the Influence

2,241 DUI Cases  
FY18-19 - projected



How Safe are Sonoma County Roads?

Average of 43 weekly reports of  
Citizens Driving Under the Influence

\*Alcohol   \*   Drugs   \* Both

DUI drivers are equal opportunity offenders.

Everyone who travels on Sonoma County  
roads is at risk.





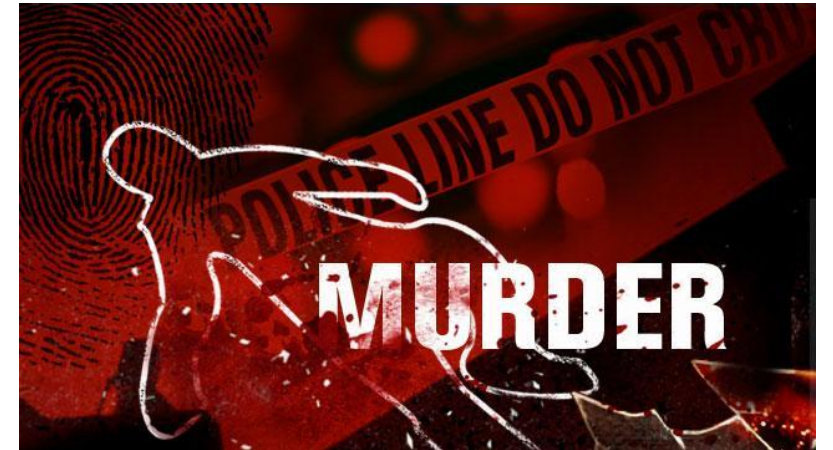
# Violent Crime

## 45 Active Homicide Cases

Multi-defendant: 10

Murder: 5

Attempted Murder: 5



- Call outs past 12 months: 40+
- Lifer hearings: 33
- 1,437 Petitions, Clemency Requests, 2<sup>nd</sup> Strikers



# Environmental and Consumer Fraud Division

Price Gouging  
327 Complaints &  
150+ Investigations

CSLB Sweeps  
130 Site Visits  
23 CSLB Cases  
10 DA Referrals

\$29,757,572 Statewide Consumer Fraud  
Task Judgements

\$328,237 Environmental BP 17200

- o Raley's - \$350,000
- o GoSmith.com - \$300,000
- o Harman Management - \$195,000
- o Midas - \$200,000
- o Sonoma Materials - \$50,000
- o Admiral Callaghan Professional Center - \$60,000
- o Petaluma Septic Service - \$32,000
- o Goop, Inc. - \$145,000
- o Amazon - \$1,512,400 statewide; Sonoma County \$131,818

**Raley's**



Harman Management Corporation



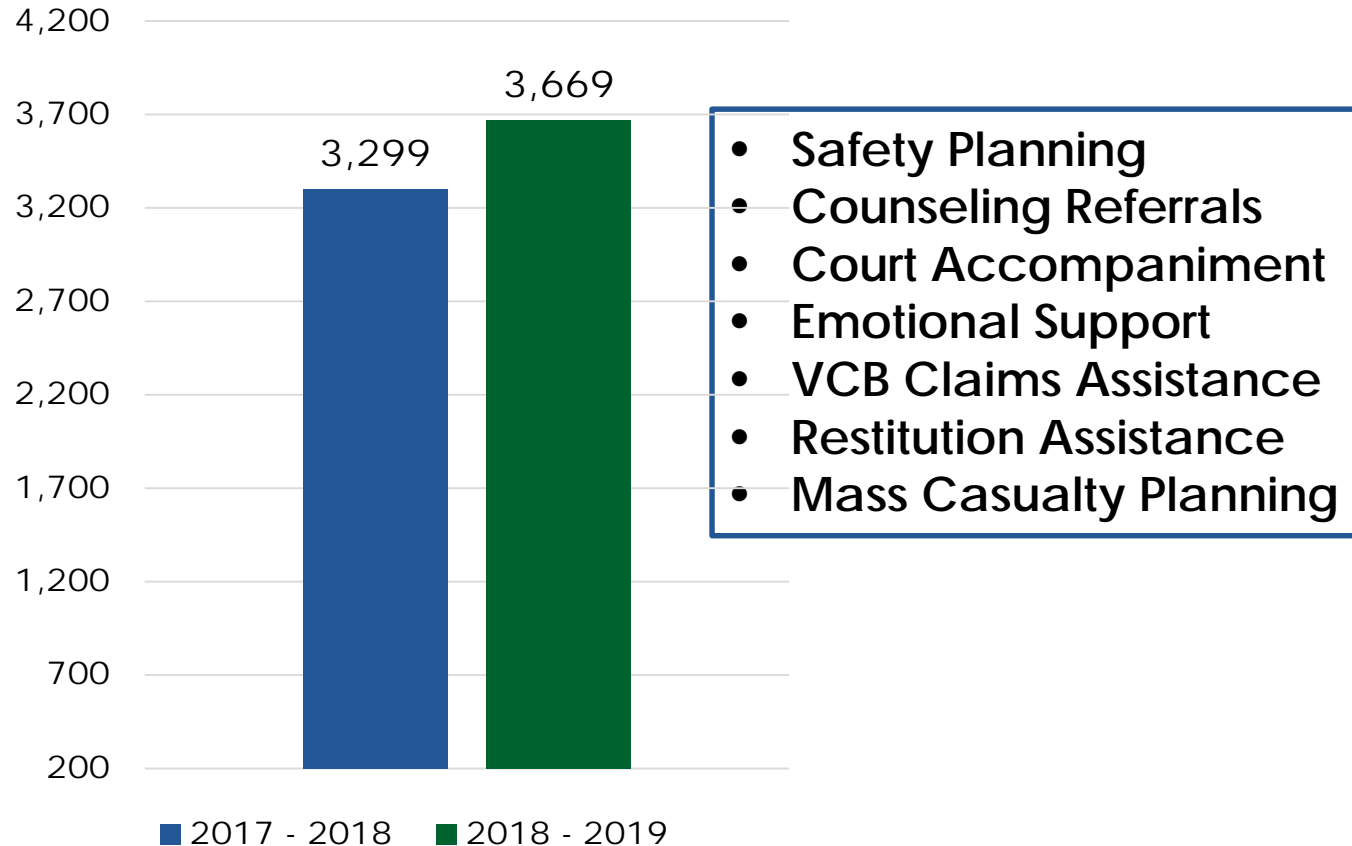
**amazon**



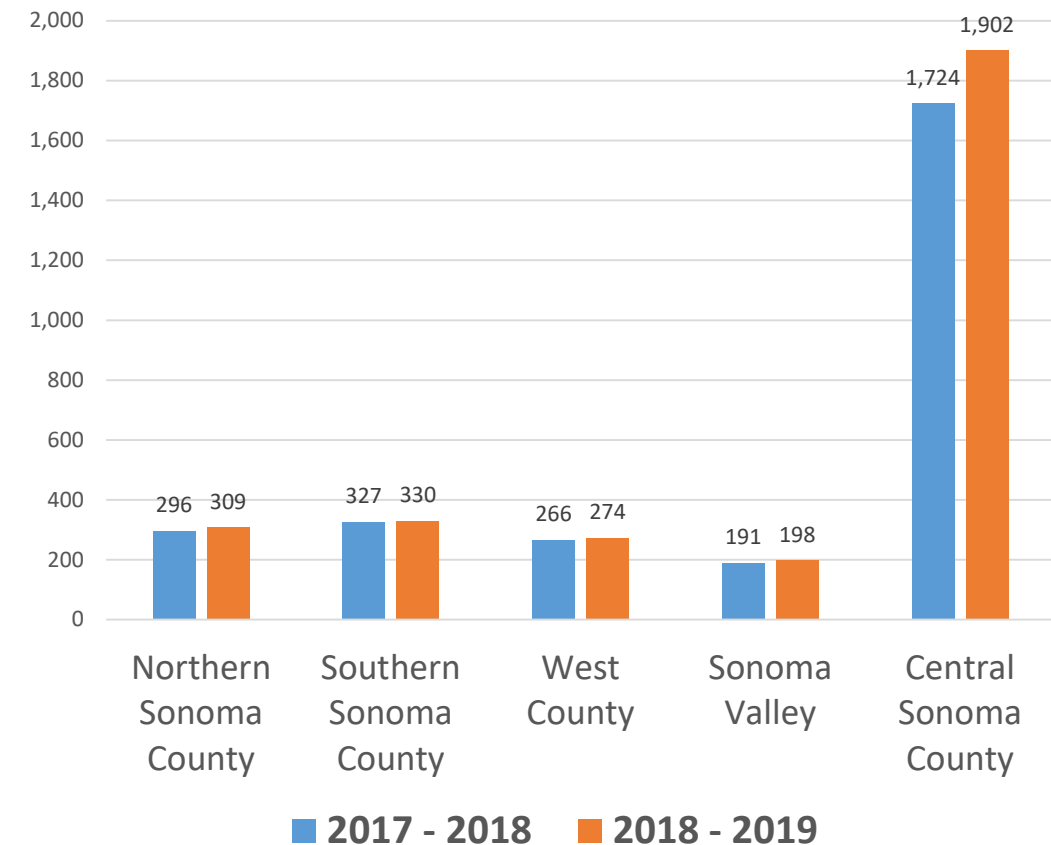


# Victim Services

Number of Victims Served



Sonoma County Victims Served  
By Area



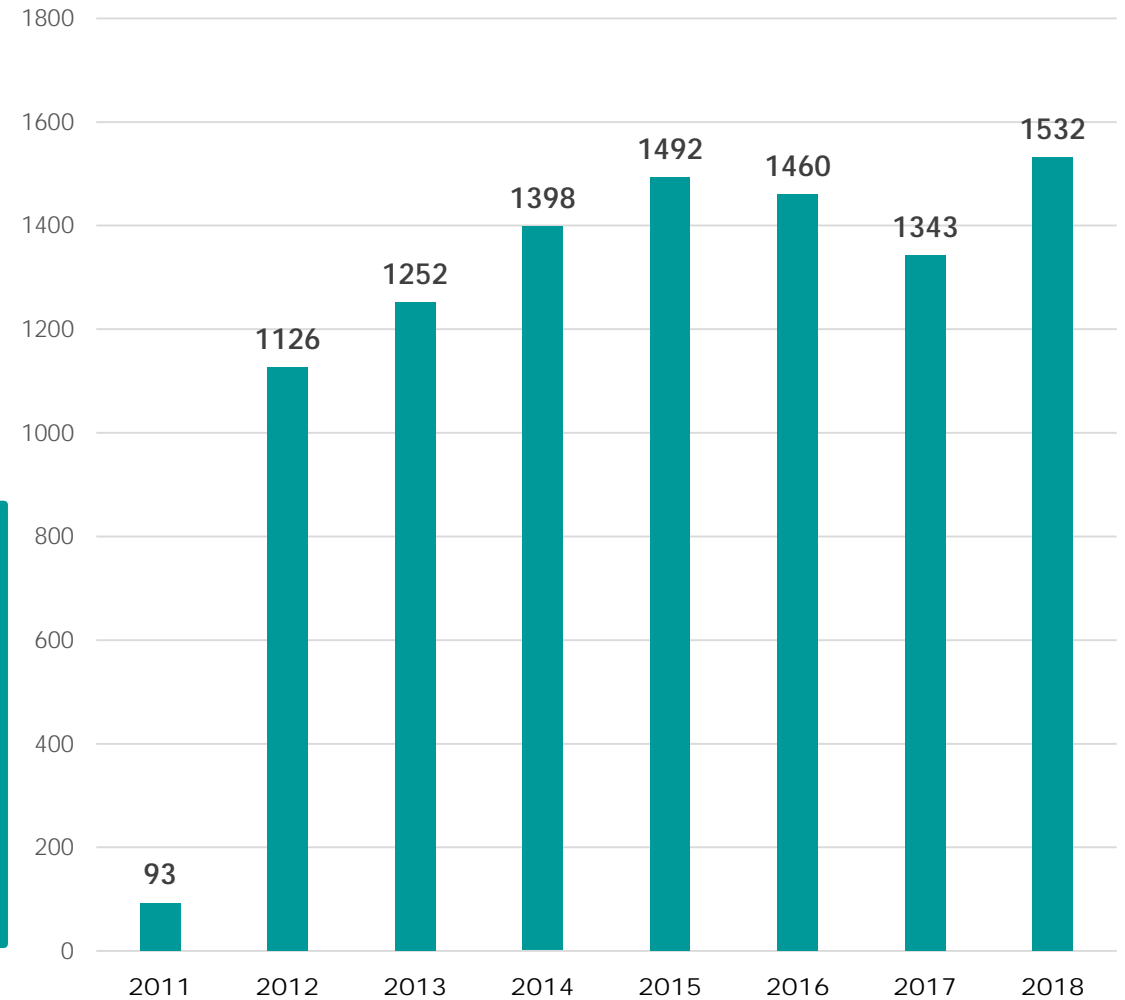


Number of clients served 2011 – 2018: 9,696

#### Services added in 2018:

- Increase in on-site counseling hours
- Partnership with Grateful Garment to make center more comfortable for clients and offer a more welcome, warm, and secure environment

## Clients Served

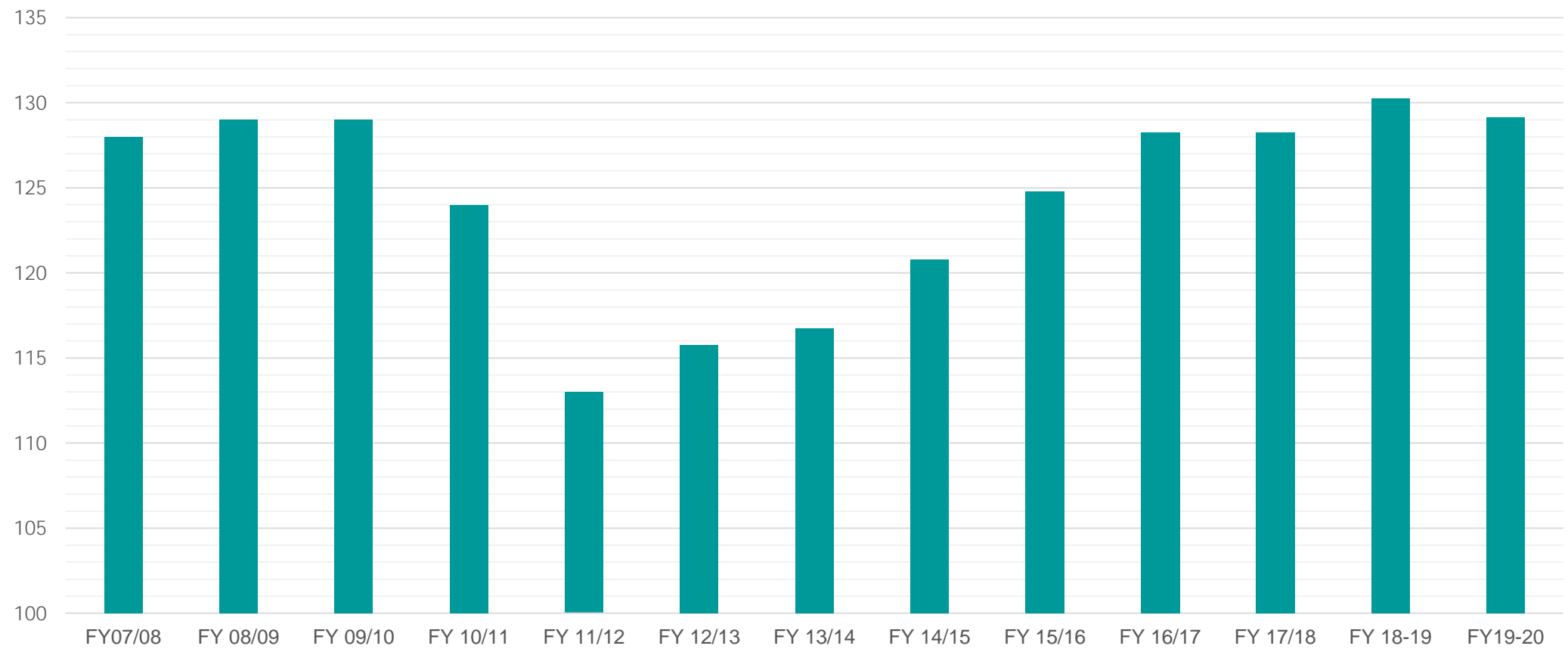


# Key Operational Challenges

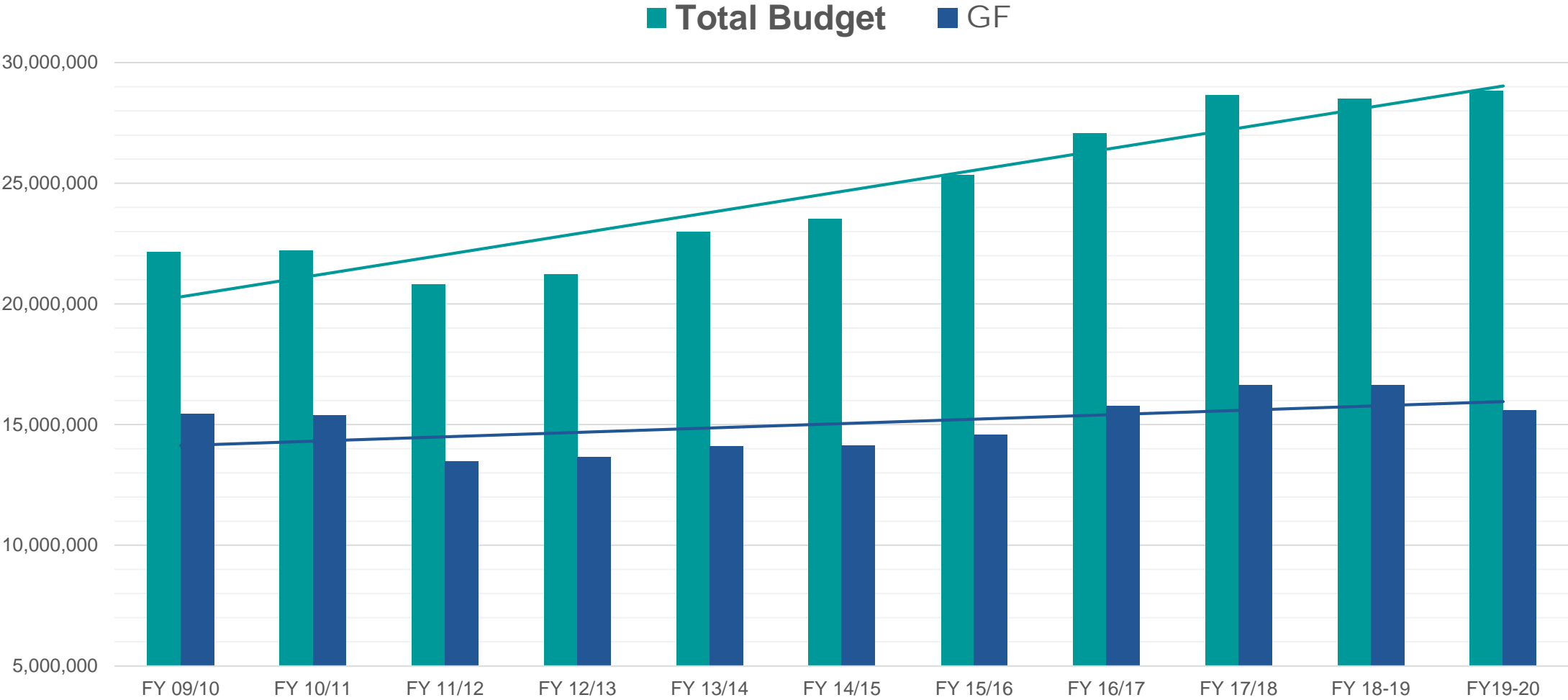
- Increasing case load & increasing case complexity
- Additional work load from legislative changes
- Reduction in funding and increase in employee costs
- Increase in employee leaves & holidays - *Criminals do not take time off*
- Compassion Fatigue
- Budget uncertainty = Reduced morale and work performance



# District Attorney Staffing History



# Total Budget to GF History



# Budget Impacts

## Key Operational Challenges

### GF Reduction:

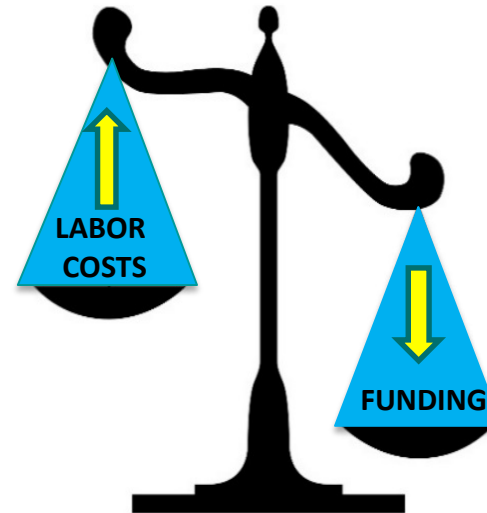
**\$1.03M – 6% Reduction**

- \$671K Funding Cut
- \$358K Add'l 2.2% GF Reduction

### Labor Cost Increases - Projected

**\$1.53M Increase for GF Positions**

- 60% Raises-Equity & COLAs
- 40% Health Benefits/Retirement/Other



**Total Fiscal Impact** → **\$2.56M**

### Potential Net Impact:

\$2.56M – Underfunding

### Reduction in Essential Staff Positions:

Manager  
Attorneys  
Investigators  
Advocates  
Support Staff



# Department Reduction Impacts

***JUSTICE DELAYED IS JUSTICE DENIED***  
***\* TO VICTIMS***  
***\* TO OUR COMMUNITY***

- Reduction in staff = Increased Public Safety Risk
- Other Potential Reductions:
  - ☐ Special Prosecution Units
  - ☐ Family Justice Center
  - ☐ Victim Claims Unit
  - ☐ Law Clerk Internship Program





