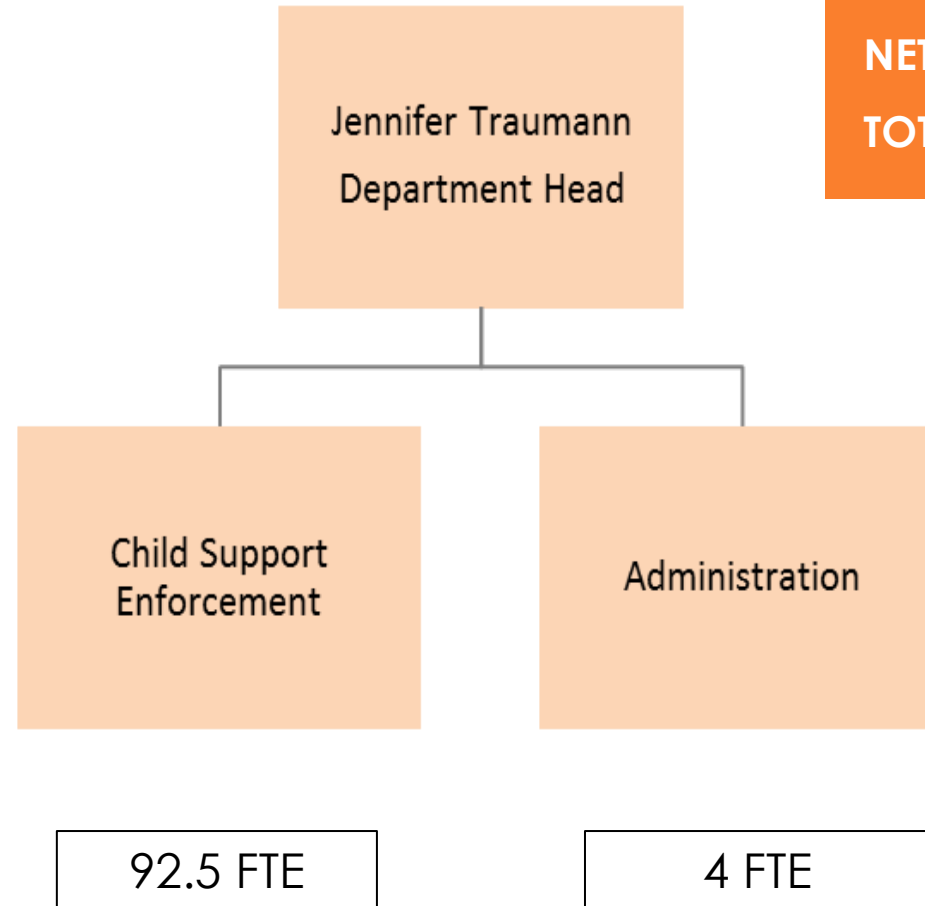


Department of Child Support Services



Child Support Services

FY 2018-19 ADOPTED: \$14,725,904
FY 2018-19 REVISED: \$14,728,317
FY 2019-20 RECOMMENDED: \$14,728,317
NET CHANGE (ADO – REC): \$2,413
TOTAL POSITIONS: 97 TOTAL FTE: 96.5



Child Support Services

Key Operational Challenges and Opportunities

Distributed Collections of \$35.2 million

- #1 in State for highest increase in distributed collections
 - Growth over 5 years – 22.7%
- #1 in State for agreements between parents

Total Collections:

- 17-18: \$34.2 million
- 18-19: \$35.2 million
- 19-20 Goal: \$35.9 million



Child Support Services

Key Operational Challenges and Opportunities

Sonoma caseload stability despite statewide decline

- Expand case opening by 5%
- Business outreach
- Community outreach



- Reduce case closures by 13%
- Rebranding services



Child Support Services

Key Operational Challenges and Opportunities

Outreach Programs

- Business & Partner
 - Hospitals and Birth Centers
 - Family Law Attorneys
 - Workforce Development
- Community
 - Festivals and local events
 - High school outreach



Child Support Services

Key Operational Challenges and Opportunities



Support all Safety Net Initiatives

- Participate in ACCESS Sonoma Phase 3 of the Multi-disciplinary Team
- Expand services to additional locations to reach more families in their neighborhoods
- Work with Safety Net partners to advance programs through coordination meetings and Upstream efforts

