



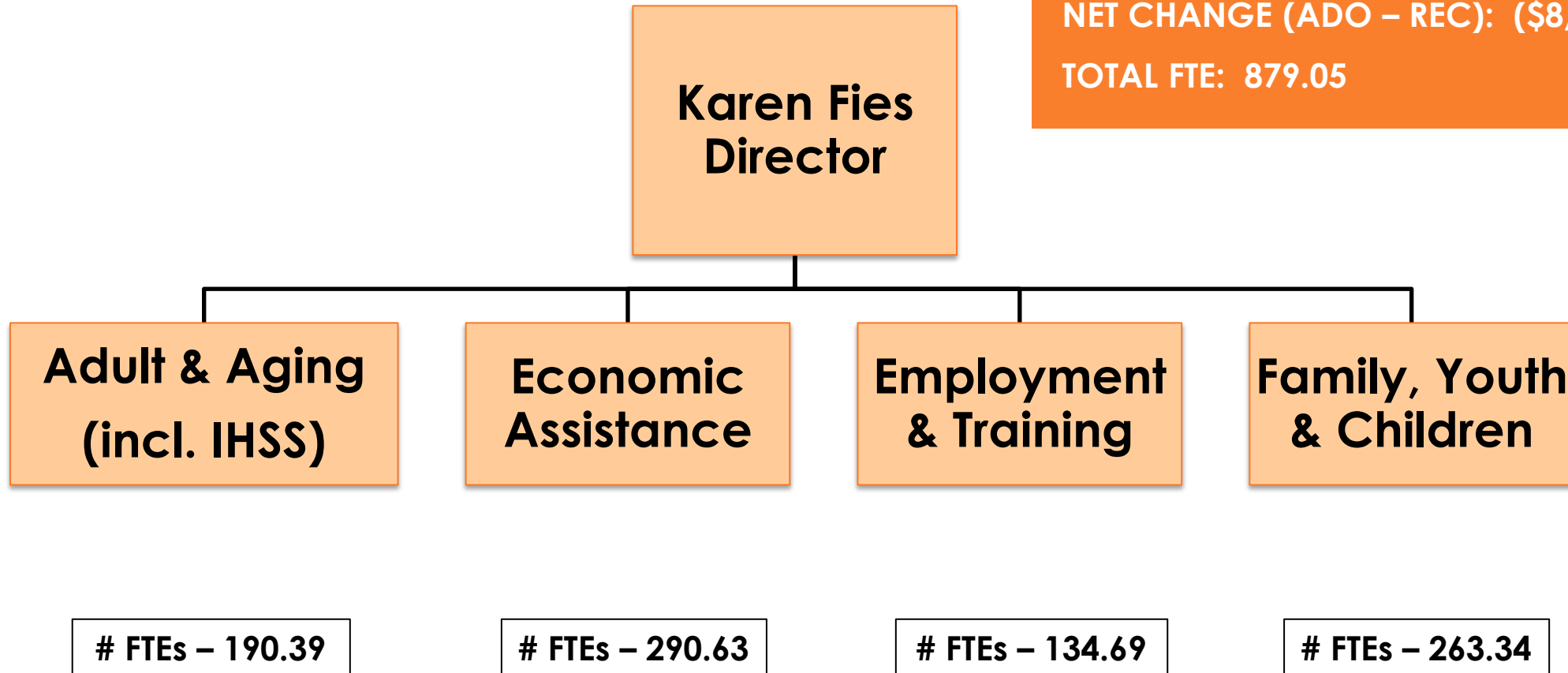
Human Services Department



Health & Human

Human Services & IHSS Department Overview

FY 2018-19 ADOPTED: \$343,037,856
FY 2018-19 REVISED: \$343,491,973
FY 2019-20 PRELIMINARY: \$334,662,847
NET CHANGE (ADO – REC): (\$8,375,009)
TOTAL FTE: 879.05



Human Services Department

Key Operational Challenges and Opportunities

Our Vision:

Protecting vulnerable children and adults and promoting maximum independence and well-being for individuals and families and striving to meet the needs of our community as well as empower clients through accessible and responsive services.

Top 3 Operational Challenges for FY 2019-20:

- **Reduced revenues**
- **Increased expenditures**
- **Increased need for services**



Human Services Department

Key Operational Challenges and Opportunities, Continued

Operational Opportunities

- New grants
- Increased collaboration



Human Services Department Reduction Impacts

Total General Fund reduction – (\$594,108)

- **Non-general fund impact – (\$3,564,648)**



Human Services Department Reduction Impacts

Veterans Services Program–General Fund (\$87,157.83)

- Reduced 2 Veteran's Service Specialists (of 7)
- Longer veteran client wait times

Non-General Fund Impacts

- State Match Funding Loss (\$143,000)
- Cut in Federal Benefits to clients (\$6,798,310)



Human Services Department Reduction Impacts

Valley of the Moon Children's Center – General Fund (\$367,240.17)

- Reduce employment of chef (1.0 FTE to .75 FTE)
- Reduce Overtime and Extra-Help labor costs



Human Services Department Reduction Impacts

Plan, Research, Eval & Engage (Upstream) Program –General Fund (\$114,000)

- **Reduce 1.0 FTE – Program Planning & Evaluation Analyst**
- **Reduced ability to provide technical assistance & evaluation**
- **Reduced ability to measure outcomes**



Human Services Department Reduction Impacts

Top Priorities for Add-Backs

1. 1st Veterans Services Specialist
2. 2nd Veterans Services Specialist
3. .25 Chef
4. Program Planning & Evaluation Analyst
5. Extra Help & Overtime for Valley of the Moon Children's Center



Human Services Department Recovery and Resiliency Framework Efforts Program Change Requests

