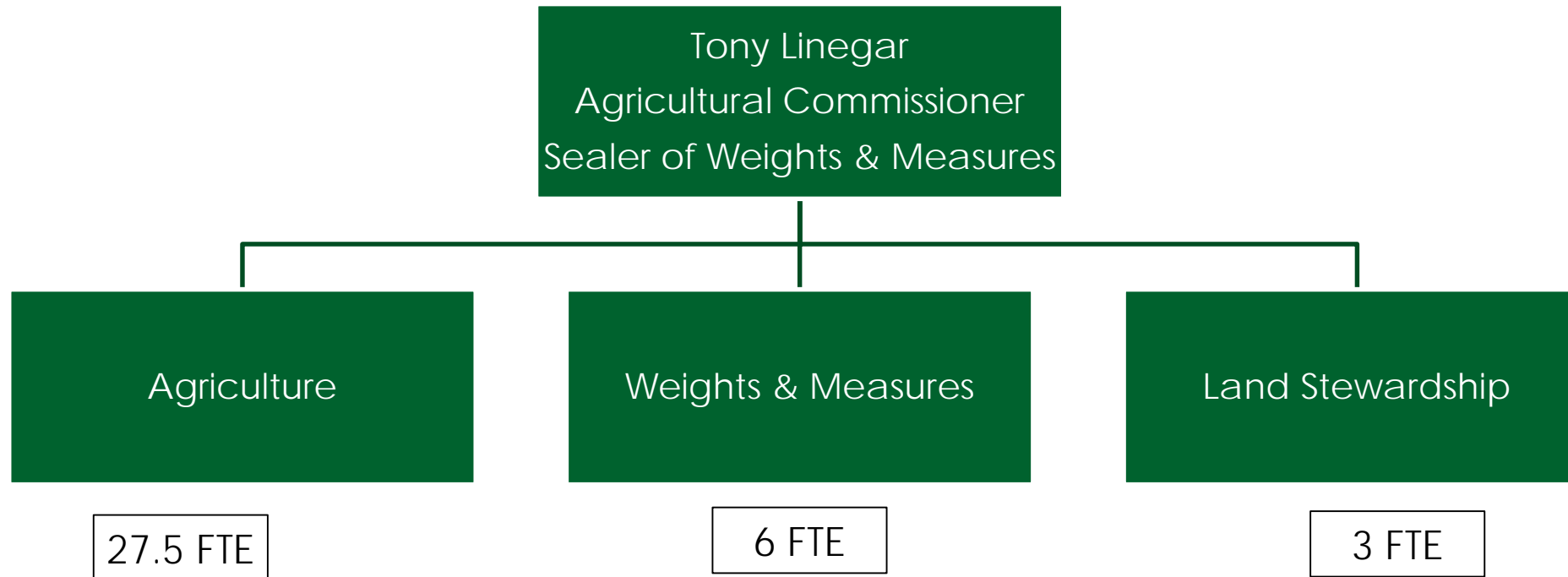


Agriculture/Weights & Measures



Agriculture/Weights & Measures (AWM) Overview

FY 2018-19 ADOPTED: \$6,616,654
FY 2018-19 REVISED: \$6,616,654
FY 2019-20 PRELIMINARY: \$6,898,257
NET CHANGE (PRELIM – ADO): \$281,603
TOTAL FTE: 36.5



Agriculture/Weights & Measures

Key Operational Challenges and Opportunities

Budget at a Glance	FY 2018-2019	FY 2019-2020
Total Expenditures	\$6,713,170	\$6,898,257
Total Revenues/Use of Fund Balance	\$4,705,785	\$5,035,642
Total General Fund Contribution	\$1,907,446	\$1,860,613
% Funded by General Fund	28.83%	26.97%

Increase in Revenue by \$329,857 (2.76%)

- Unclaimed Gas Tax / SB1
- Increased Funding at the State Level

Decrease in General Fund by \$46,833 (1.86%)

- Decrease in maintenance of effort



Agriculture/Weights & Measures

Key Operational Challenges and Opportunities, Continued

- Maintain service levels, especially to mandated programs while absorbing increased costs and reductions in general fund support
- Responding to new initiatives with limited staff and resources
- Recruitment and retention of staff



Agriculture/Weights & Measures

Key Operational Challenges and Opportunities, Continued

- Due to the fact that AWM is a regulatory agency there are limited opportunities to collaborate with other agencies. This also limits our ability to obtain outside funding sources with the exception of our State partners
- Continue streamlining operations by piggybacking our state and local level inspection responsibilities (examples include cannabis, nursery, Light Brown Apple Moth, Glassy-Winged Sharpshooter, Hazmat, etc.)



Agriculture/Weights & Measures Reduction Impacts

General Fund:

- The estimated 1.86% cut for FY 2019/20 will result in a continued deterioration of general fund supported programs such as pesticide use enforcement, VESCO, and weights and measures among others
- Reduced general fund in package inspection program has resulted in missed opportunities to collaborate with the District Attorney's office resulting in reduced civil case settlements, funding for the county and consumer protection
- Pesticide use enforcement is primarily funded through general fund dollars. Continued reduction in the oversight of commercial pesticide use will result in a continued increase in non-compliances putting the public, farm workers, and the environment at risk



Agriculture/Weights & Measures Program Improvement Requests for FY 2019-20

Additional FTE:

- **Agricultural Biologist/Standards Specialist**
 - Needed to leverage general fund support required to meet a state mandated maintenance of effort, which will result in additional state funding
- **Deputy Agricultural Commissioner**
 - Needed to develop local hemp ordinance within the timeframe set by the Board of Supervisors and ongoing administration of a state and local program



Agriculture/Weights & Measures

Recovery and Resiliency Framework Efforts

Efforts the department is taking to address action items in the Recovery and Resiliency Framework in FY 2019/20

- Inspecting incoming plants for invasive pests to prevent their introduction in landscaping during rebuilding of fire damaged areas
- Making the *Land Stewards Guide to Vineyard and Orchard Erosion Control* available to all land owners dealing with erosion issues on their property

