



Community
Development
Commission
April 9, 2019

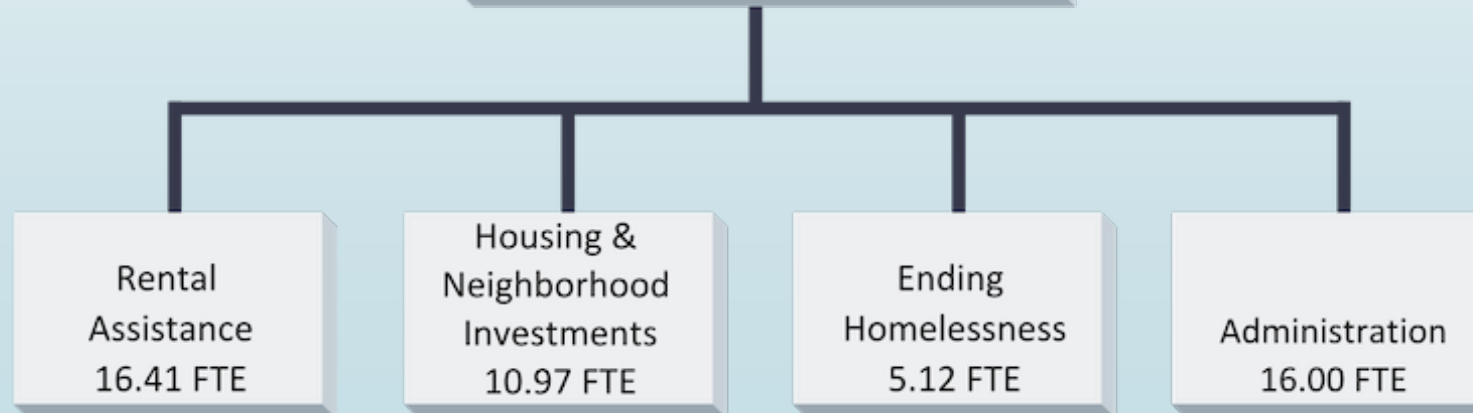
FY 2019-20 Preliminary Budget

Community Development Commission

FY 2018-19 ADOPTED:	\$68,760,244
FY 2018-19 REVISED:	\$73,465,262
FY 2019-20 PRELIMINARY:	\$97,091,064
NET CHANGE (ADO – PRE):	\$28,330,820

TOTAL FTE: 48.5

Margaret Van Vliet
Executive Director





FY 2018-19 Accomplishments

New Resources Enable Expanded Reach and Impact

- Home Sonoma County - Redesigned homeless system
- More rental assistance vouchers
- Key development projects advanced
- Financing to facilitate more affordable development
- Renewal Enterprise District
- Strengthened internal systems

FY 2018-19 Projects



Renewal Enterprise District (RED)

County of Sonoma | City of Santa Rosa



HOME
SONOMA COUNTY

Roseland Village Development Project



West College Development Project



Core Services Funding Brings Mandates

US Department of Housing and Urban Development (HUD)

- Housing Choice Vouchers
- CDBG
- HOME
- Continuum of Care
- Emergency Solutions Grant
- FEMA Flood Elevation
- CDBG-DR (FY 19-20)

California Department of Housing and Community Development (HCD)

- State Emergency Solutions Grant
- Homeless Emergency Aid Program
- Redevelopment Successor Agency
- CalHOME
- No Place Like Home (FY 19-20)



Mandates – Federal, State, Local

Fair Housing and Civil Rights, including Americans with Disabilities Act

Davis Bacon Prevailing Wages

National Environmental Protection Act

California Environmental Quality Act

Employment and Economic Opportunity

Redevelopment Successor Agency

Housing: Affordability in Sonoma County

- Real wages in Sonoma County are up 6% since 2011;
- Rents are up 32% and home prices are up 58%;
- 78,567 households spend more than 30% of their income on housing costs, or 40.6% of households.

% of Households Cost-Burdened

Bay Area Counties	
Sonoma	41%
Contra Costa	38%
Marin	38%
Napa	38%
Solano	38%
Alameda	37%
San Mateo	36%
Santa Clara	36%
San Francisco	33%
Bay Area	37%

Source: American Community Survey, one-year estimates 2017

Key Challenges and Opportunities

Continue current path – grow both resources and capacity to serve greater numbers of low-income residents more effectively

- Incorporate housing equity lens to address long-standing disparities
- Strengthen collaboration in all program areas
 - Cities and unincorporated communities– Renewal Enterprise District (RED), Home Sonoma County, Housing Choice Vouchers
 - Safety net departments
 - Private sector and philanthropic funding
- Complete data and technology upgrades for transparency
- Ensure full compliance with all federal and state mandates and laws

Strategic Plan Framework



Vision

Homes for all in and inclusive neighborhoods

Values

Stewardship, social equity, cooperation, ingenuity, dignity

Mission

Opening doors to permanent housing and opportunity

Goals

- Create pathways to housing and community resources
- Build trust through proactive engagement
- Foster a strong team

Equity in Housing

Race/Ethnicity		
	Share of all households	Share cost burdened
White	64%	31%
<u>Latinx</u>	27%	41%
Asian	5%	22%
Other	3%	36%
African American	2%	34%

- Social Vulnerability Index analyzed post-fire by disaster consultant
- Other existing disparities well-documented
 - 15% of HCV households are Latino – far less than actual representation
- Analysis of Impediments to Fair Housing



Position Change Requests

Core Services Compliance (504)

*HEAP Administration

*Housing Authority Intake Specialist

*Housing Authority Intake Support

CDC Analyst

Ombudsman

**Positions fully funded by CDC.*

**Remaining positions 20% funded by CDC*