

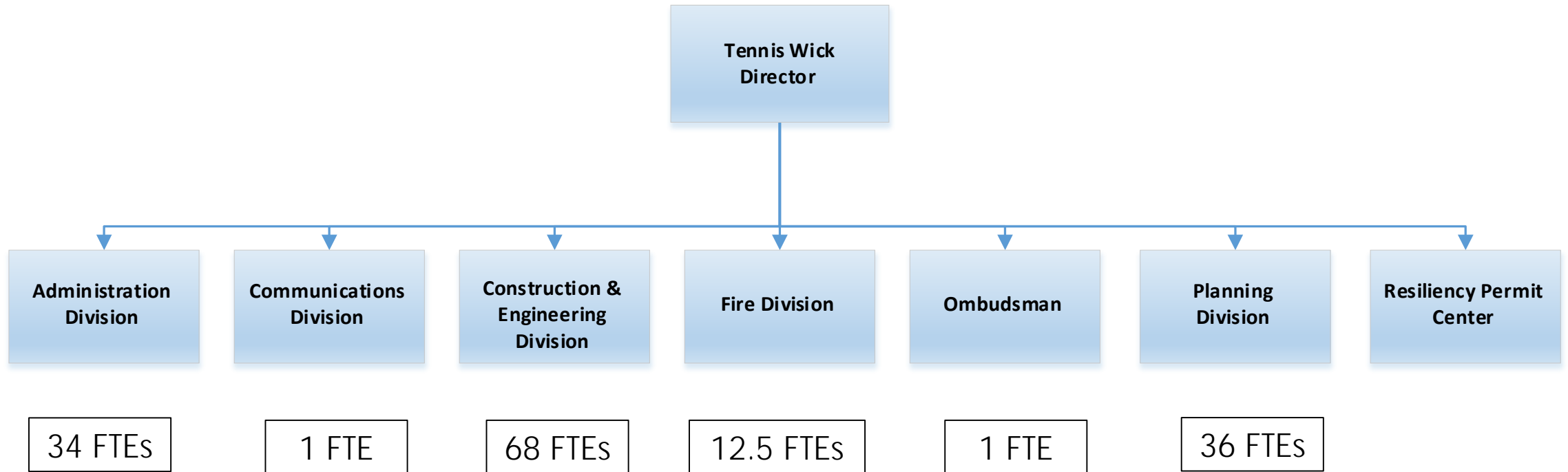
Permit Sonoma



Development Services

Department Overview

FY 2018-19 ADOPTED:	\$34,180,144
FY 2018-19 REVISED:	\$37,371,303
FY 2019-20 PRELIMINARY:	\$42,864,760
NET CHANGE (PRE – REV):	\$ 5,493,457
TOTAL FTE: 152.50	



Department

Key Operational Challenges and Opportunities

General Plan. Permit Sonoma collects General Plan fees by way of the Plan Admin Fee (15% of building permit fee value). At this level, revenue was never intended to cover plan implementation and new plan preparation. Comprehensive updating of the general plan will most likely require several millions dollars, far less that the \$1.4M (using approximately \$600,000 for FY18/19) in the account, thus requiring an additional allocation. Future fees/increases could be used to refund additional allocations.

Operational Challenge. The department has been able to respond to the immediate and sometimes dire needs of the community in various situations where full cost recovery is not always possible, practical, or consistent with policy. Permit and fees revenue levels have been comparable to prior years, with only a slight decline. The goal has been to maintain expedited process and reduced rates for fire rebuilds, as well as serve our regular business development community. Contract expenses have increased due to overall backlog and fire and flood recovery.



Department Recovery and Resiliency Framework Efforts

Program Change Requests

- **Service Reductions:** Permit Sonoma has been able to maintain full service capacity to the public and has been able to prioritize residential rebuild and safety efforts through the Fire Resiliency Center and the centralized Emergency Operations Center.
- **Resiliency Efforts:** Implement and administer the Expanded Fuels Reduction and Landscape Resiliency Campaign, including: small parcel, vegetation management, inspection and enforcement program.

Program change requests:

- Engineering Technician to assist in at cost work for fire recovery and regular business compliance inspections.
- Senior Office Assistant to assist Land Survey.
- Two Registered Environmental Health Specialist to assist Well & Septic.

