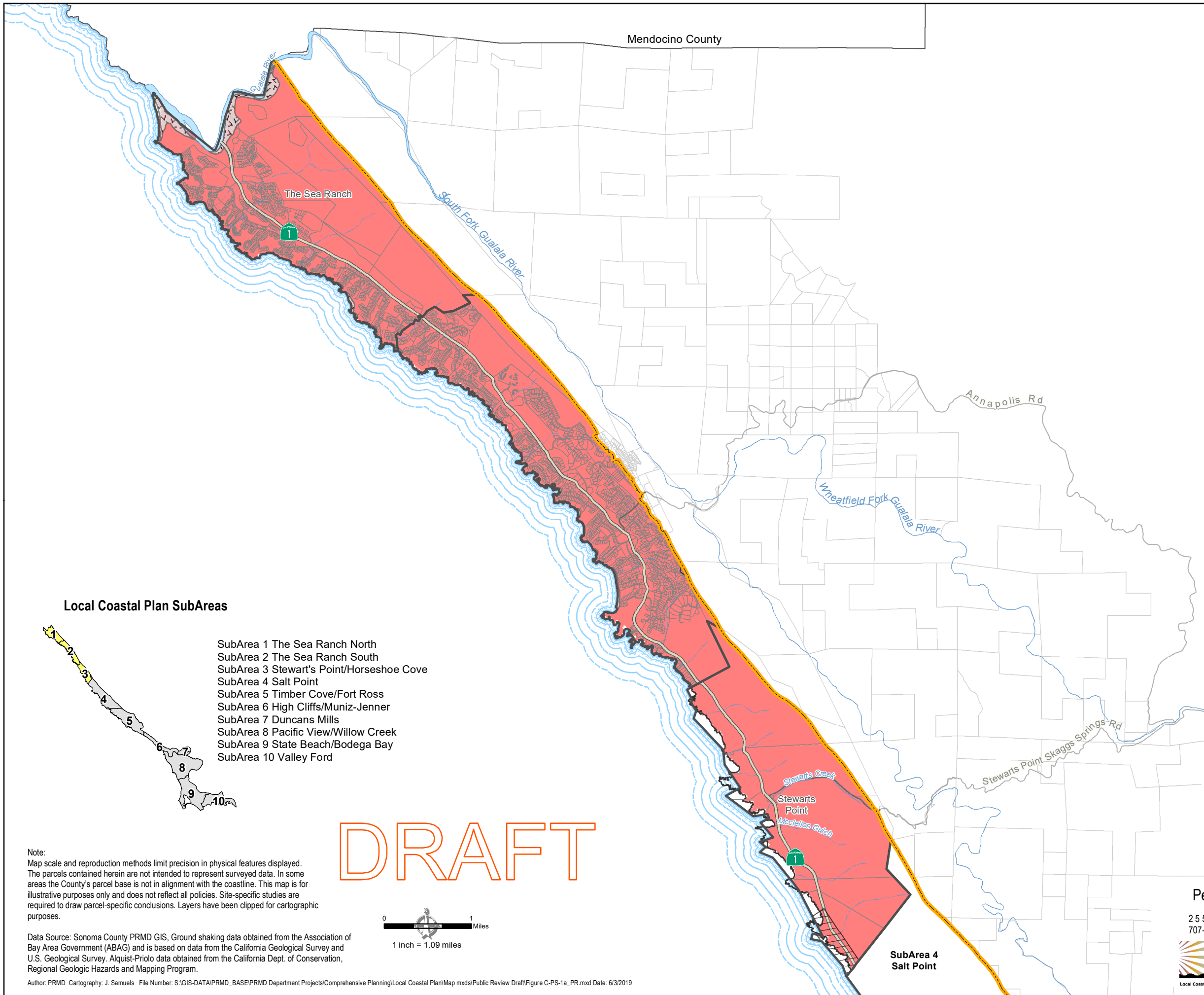


Sonoma County Local Coastal Plan Seismic Geologic Hazards



Modified Mercalli Index - MMI

IX - Violent ■

Liquefaction Potential

Very High ■

Earthquake Fault Zone ■

Base Map Layers

Coastal SubArea ■

Parcel ■

Coastal Zone Boundary

Natural Coastline

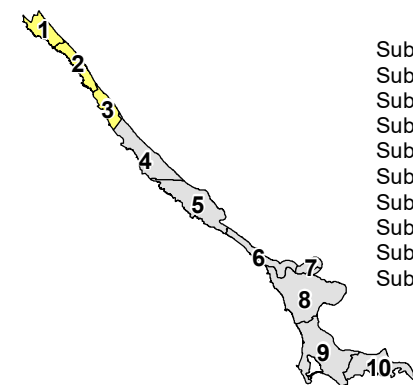
Highway

Road

Perennial Stream

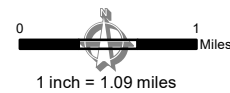
Intermittent Stream

Local Coastal Plan SubAreas



- SubArea 1 The Sea Ranch North
- SubArea 2 The Sea Ranch South
- SubArea 3 Stewart's Point/Horseshoe Cove
- SubArea 4 Salt Point
- SubArea 5 Timber Cove/Fort Ross
- SubArea 6 High Cliffs/Muniz-Jenner
- SubArea 7 Duncans Mills
- SubArea 8 Pacific View/Willow Creek
- SubArea 9 State Beach/Bodega Bay
- SubArea 10 Valley Ford

DRAFT



**FIGURE C-PS-1a
Seismic Geologic Hazards
SubAreas 1 - 3**

Note:
Map scale and reproduction methods limit precision in physical features displayed. The parcels contained herein are not intended to represent surveyed data. In some areas the County's parcel base is not in alignment with the coastline. This map is for illustrative purposes only and does not reflect all policies. Site-specific studies are required to draw parcel-specific conclusions. Layers have been clipped for cartographic purposes.

Data Source: Sonoma County PRMD GIS, Ground shaking data obtained from the Association of Bay Area Government (ABAG) and is based on data from the California Geological Survey and U.S. Geological Survey. Alquist-Priolo data obtained from the California Dept. of Conservation, Regional Geologic Hazards and Mapping Program.

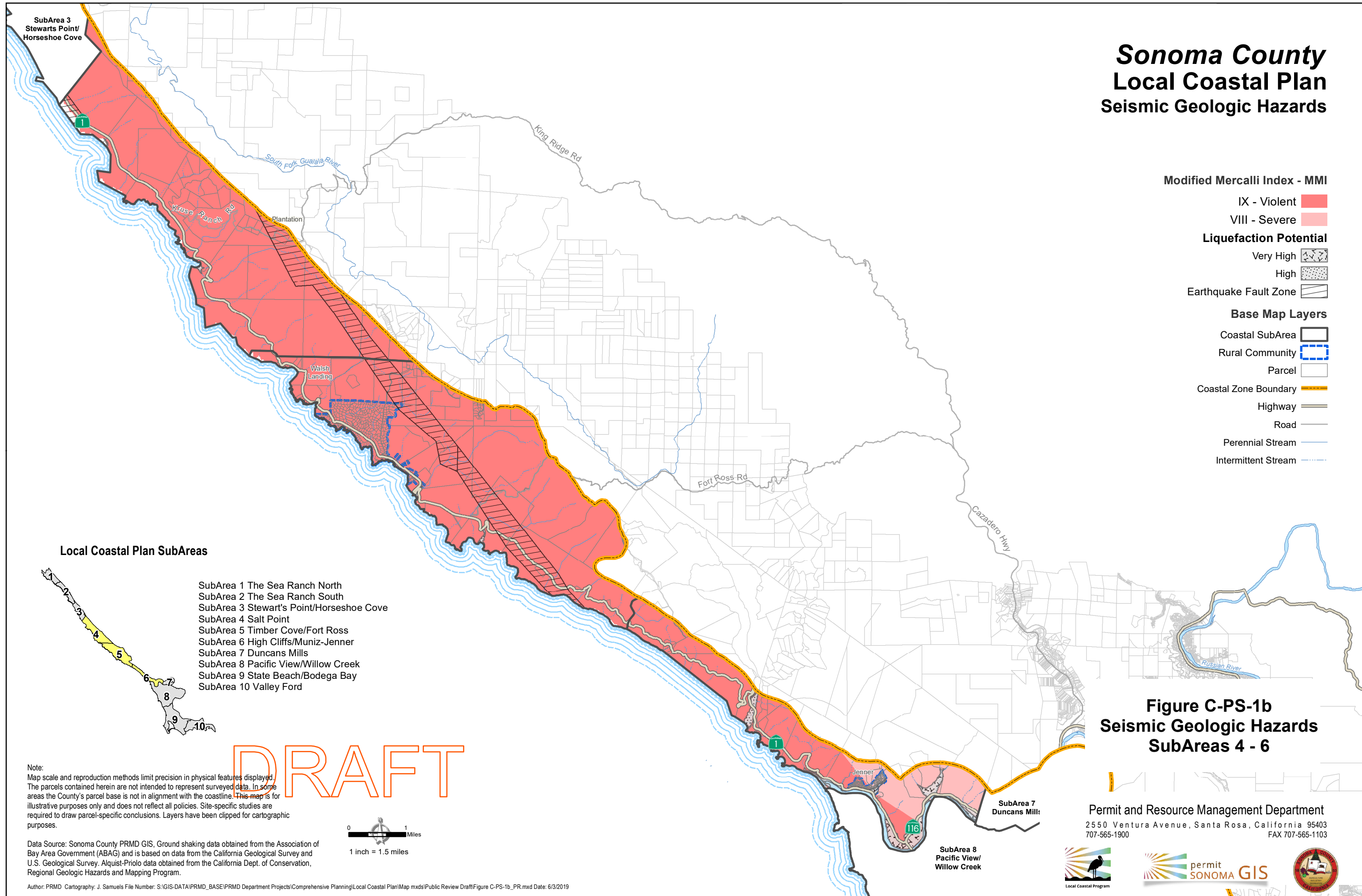
Author: PRMD Cartography: J. Samuels File Number: S:\GIS-DATA\PRMD_BASE\PRMD Department Projects\Comprehensive Planning\Local Coastal Plan\Map mxd\Public Review Draft\Figure C-PS-1a_PR.mxd Date: 6/3/2019

Permit and Resource Management Department

2550 Ventura Avenue, Santa Rosa, California 95403
707-565-1900 FAX 707-565-1103



Sonoma County Local Coastal Plan Seismic Geologic Hazards



Modified Mercalli Index - MMI

- IX - Violent ■
- VIII - Severe ■

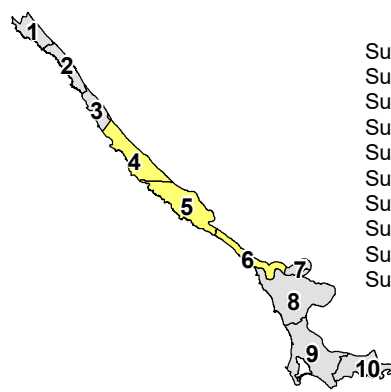
Liquefaction Potential

- Very High
- High
- Earthquake Fault Zone

Base Map Layers

- Coastal SubArea
- Rural Community
- Parcel
- Coastal Zone Boundary
- Highway
- Road
- Perennial Stream
- Intermittent Stream

Local Coastal Plan SubAreas

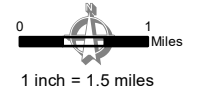


- SubArea 1 The Sea Ranch North
- SubArea 2 The Sea Ranch South
- SubArea 3 Stewart's Point/Horseshoe Cove
- SubArea 4 Salt Point
- SubArea 5 Timber Cove/Fort Ross
- SubArea 6 High Cliffs/Muniz-Jenner
- SubArea 7 Duncans Mills
- SubArea 8 Pacific View/Willow Creek
- SubArea 9 State Beach/Bodega Bay
- SubArea 10 Valley Ford

**Figure C-PS-1b
Seismic Geologic Hazards
SubAreas 4 - 6**

Note:
Map scale and reproduction methods limit precision in physical features displayed. The parcels contained herein are not intended to represent surveyed data. In some areas the County's parcel base is not in alignment with the coastline. This map is for illustrative purposes only and does not reflect all policies. Site-specific studies are required to draw parcel-specific conclusions. Layers have been clipped for cartographic purposes.

DRAFT



Data Source: Sonoma County PRMD GIS, Ground shaking data obtained from the Association of Bay Area Government (ABAG) and is based on data from the California Geological Survey and U.S. Geological Survey. Alquist-Priolo data obtained from the California Dept. of Conservation, Regional Geologic Hazards and Mapping Program.

Author: PRMD Cartography; J. Samuels File Number: S:\GIS-DATA\PRMD_BASE\PRMD Department Projects\Comprehensive Planning\Local Coastal Plan\Map mxd\Public Review Draft\Figure C-PS-1b_PR.mxd Date: 6/3/2019

Permit and Resource Management Department
2550 Ventura Avenue, Santa Rosa, California 95403
707-565-1900 FAX 707-565-1103



Sonoma County Local Coastal Plan Seismic Geologic Hazards

Modified Mercalli Index - MMI

IX - Violent

VIII - Severe

Liquefaction Potential

Very High

High

Earthquake Fault Zone

Base Map Layers

County

Parcel

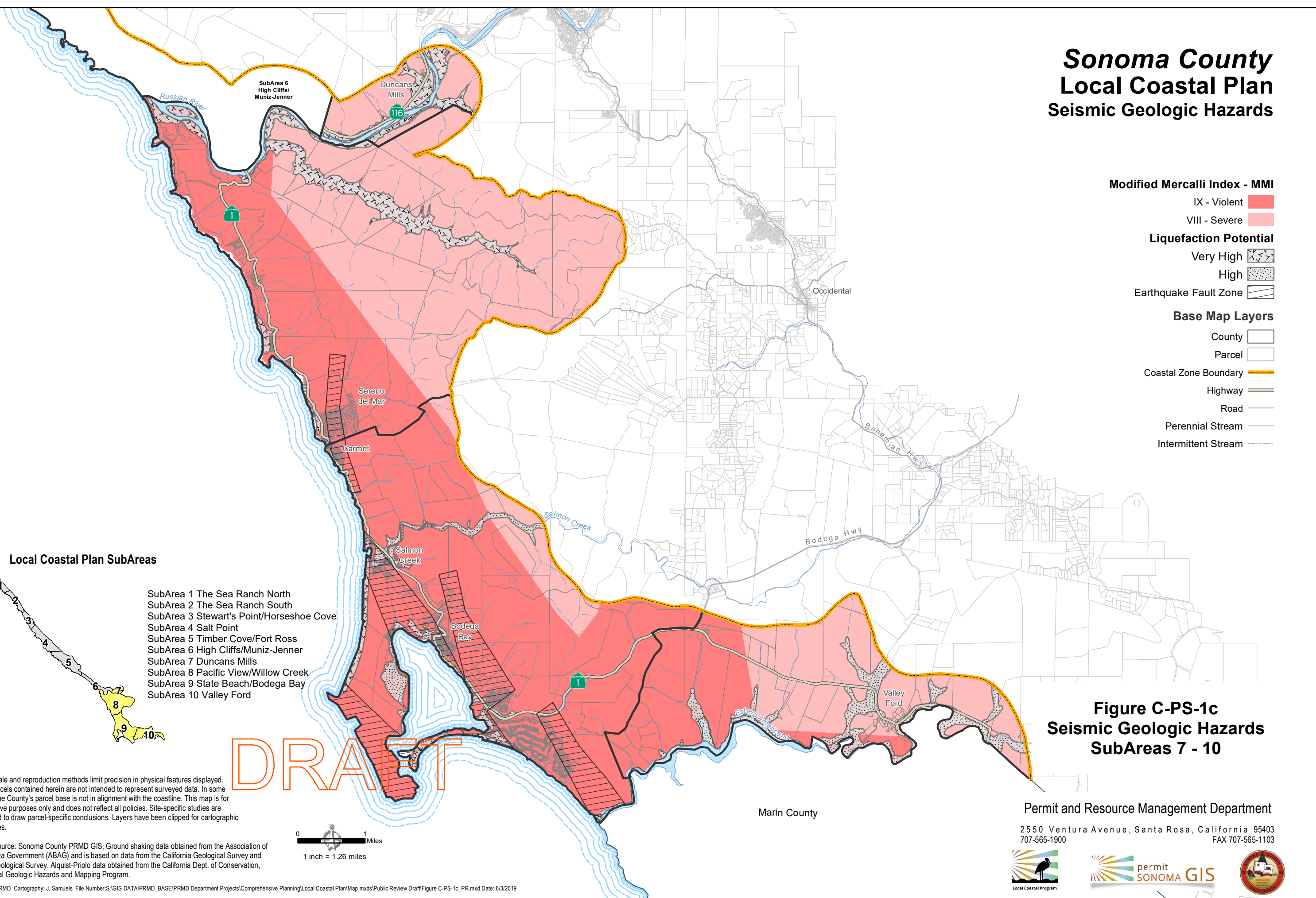
Coastal Zone Boundary

Highway

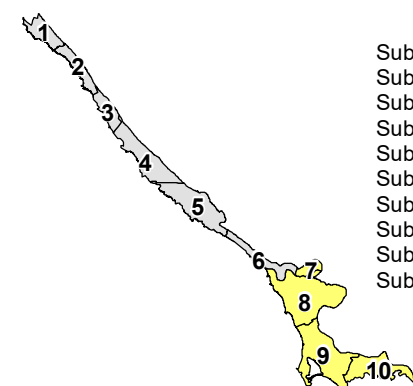
Road

Perennial Stream

Intermittent Stream



Local Coastal Plan SubAreas



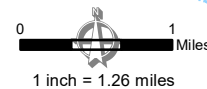
- SubArea 1 The Sea Ranch North
- SubArea 2 The Sea Ranch South
- SubArea 3 Stewart's Point/Horseshoe Cove
- SubArea 4 Salt Point
- SubArea 5 Timber Cove/Fort Ross
- SubArea 6 High Cliffs/Muniz-Jenner
- SubArea 7 Duncans Mills
- SubArea 8 Pacific View/Willow Creek
- SubArea 9 State Beach/Bodega Bay
- SubArea 10 Valley Ford

**Figure C-PS-1c
Seismic Geologic Hazards
SubAreas 7 - 10**

Note:
Map scale and reproduction methods limit precision in physical features displayed. The parcels contained herein are not intended to represent surveyed data. In some areas the County's parcel base is not in alignment with the coastline. This map is for illustrative purposes only and does not reflect all policies. Site-specific studies are required to draw parcel-specific conclusions. Layers have been clipped for cartographic purposes.

Data Source: Sonoma County PRMD GIS, Ground shaking data obtained from the Association of Bay Area Government (ABAG) and is based on data from the California Geological Survey and U.S. Geological Survey. Alquist-Priolo data obtained from the California Dept. of Conservation, Regional Geologic Hazards and Mapping Program.

Author: PRMD Cartography: J. Samuels File Number: S:\GIS-DATA\PRMD_BASE\PRMD Department Projects\Comprehensive Planning\Local Coastal Plan\Map mxds\Public Review Draft\Figure C-PS-1c_PR.mxd Date: 6/3/2019



Marin County

Permit and Resource Management Department

2550 Ventura Avenue, Santa Rosa, California 95403
707-565-1900 FAX 707-565-1103

