



COVID-19 Emergency Response Update

May 10, 2022

Tina Rivera

Director

Sonoma County Department of Health Services

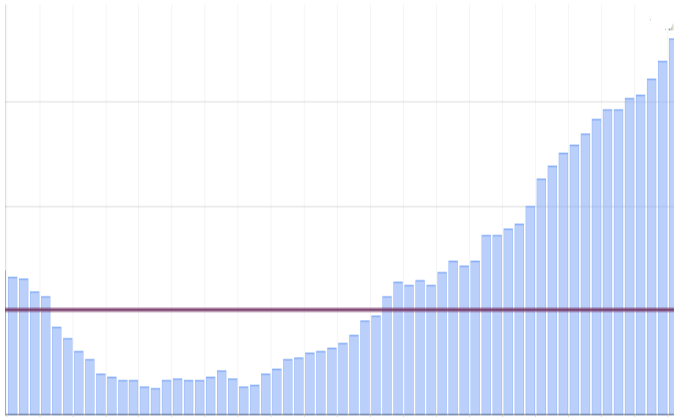
Dr. Sundari Mase

Sonoma County Health Officer

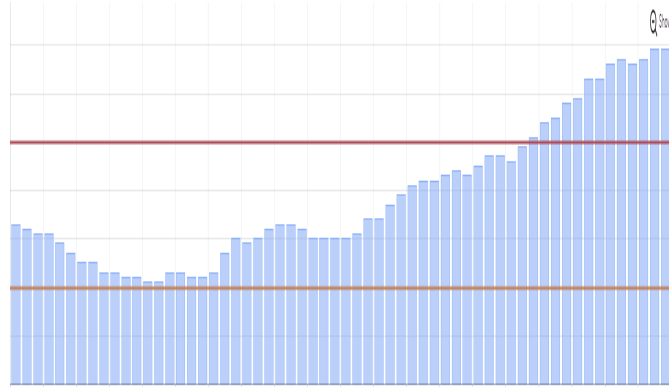


sonoma county
DEPARTMENT OF HEALTH SERVICES

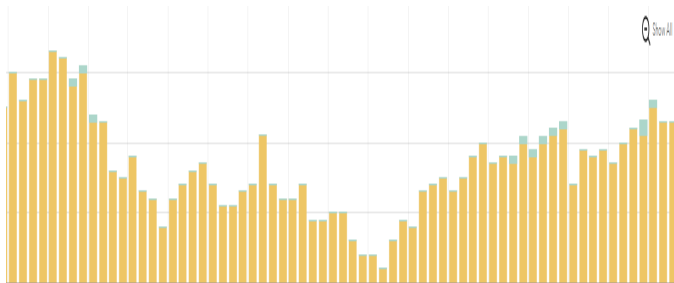
COUNTYWIDE TRENDS | MARCH 1, 2022 – PRESENT



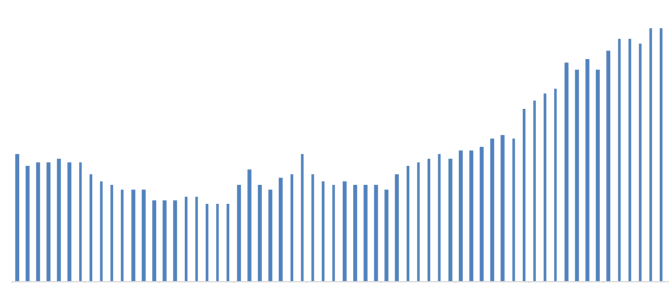
New cases per 100,000 residents, per day



Overall test positivity



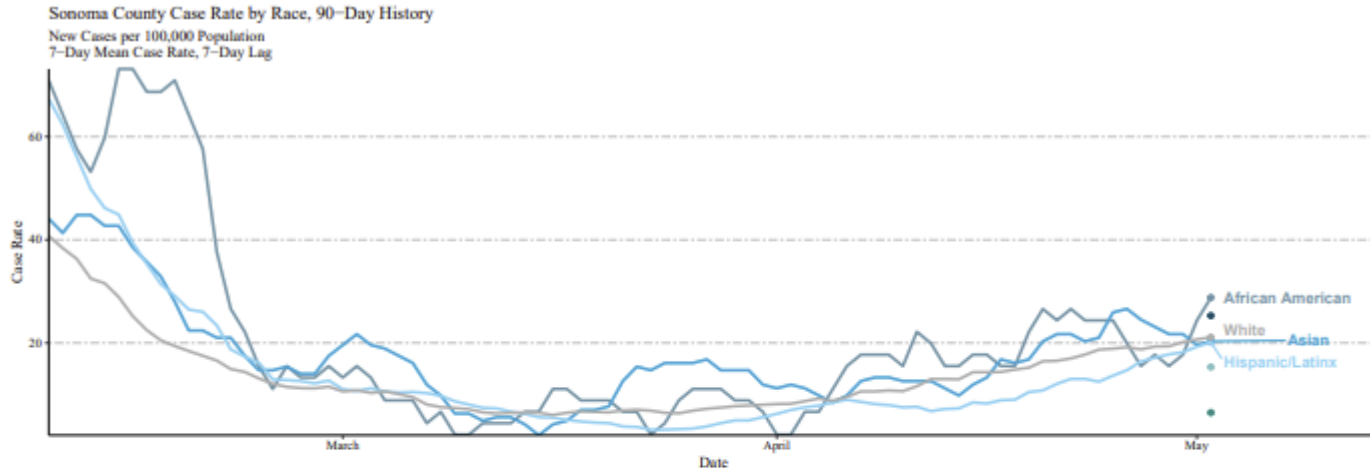
COVID-19 hospitalizations



Lowest HPI test positivity

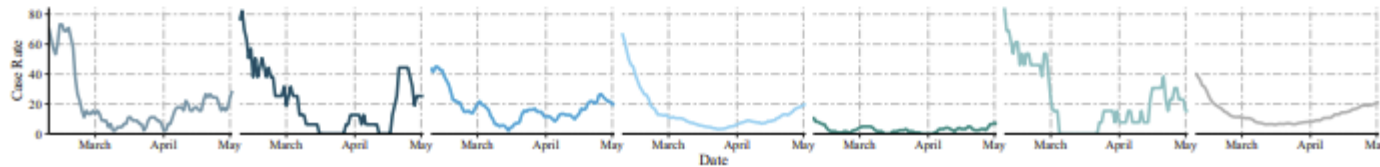
- **Metrics as of May 9, 2022:**
 - **23** new cases per 100,000 residents per day
 - **7.2%** overall test positivity
 - **7%** test positivity in lowest HPI quartile
- **23** people are currently hospitalized with COVID
- **66** people have died from COVID since Jan. 1, 2022

CASE RATES BY RACE/ETHNICITY



Current Case Rate:

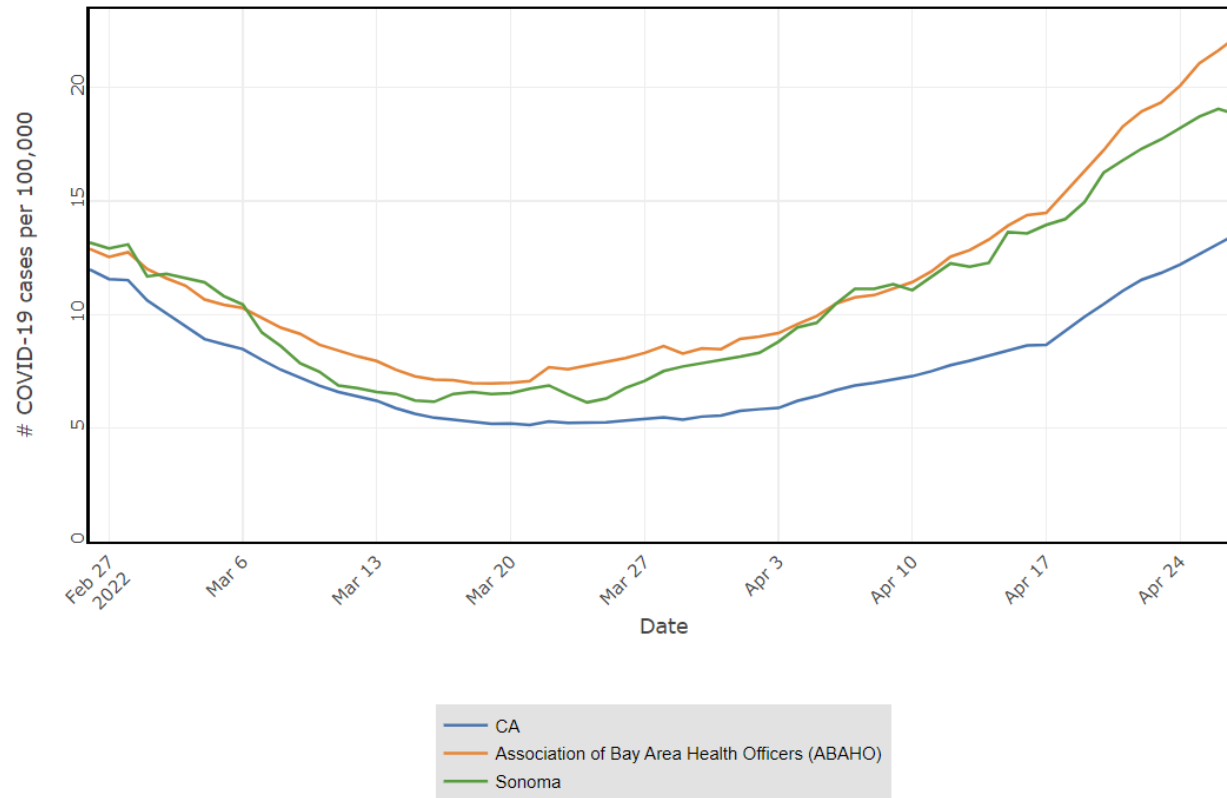
African American	American Indian / Alaskan Native	Asian	Hispanic/Latinx	Multiple Race	Pacific Islander	White
28.81	25.28	20.31	20.11	6.48	15.33	21.1



Black residents are currently experiencing the highest case rates at **29** new cases per 100,000 residents per day, followed by **American Indian/Alaskan Native** residents at **26** new cases per 100,000 residents per day.

INCREASE IN COVID-19 CASES

Case rate per 100,000, excl prisoners (7 day avg w/ 7 day lag) for Multiple Locations

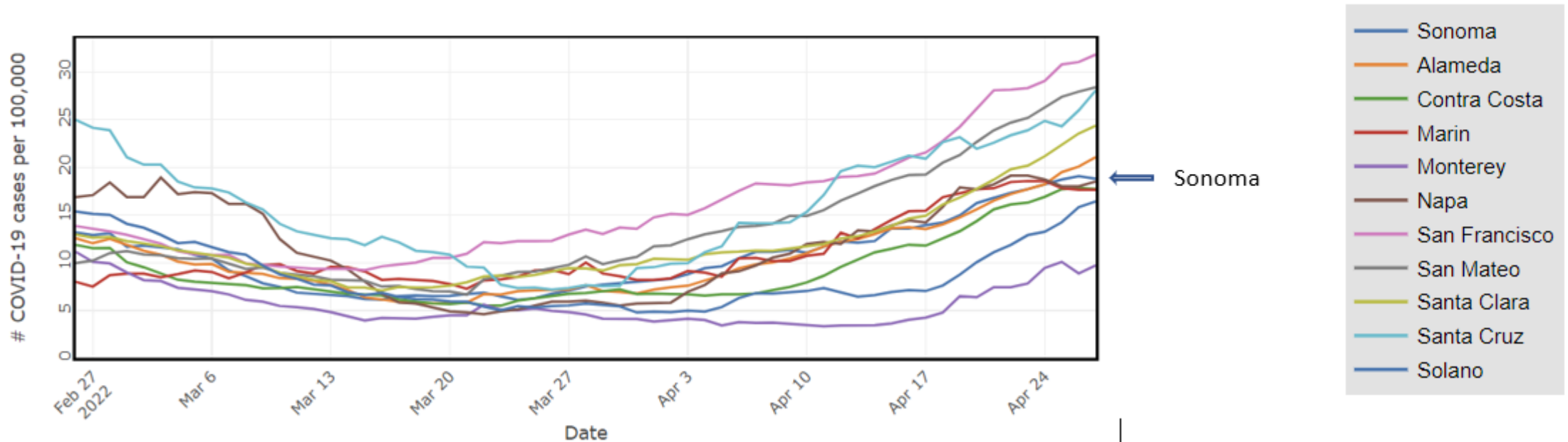


Currently, Bay Area and Sonoma County case rates are trending higher than California.

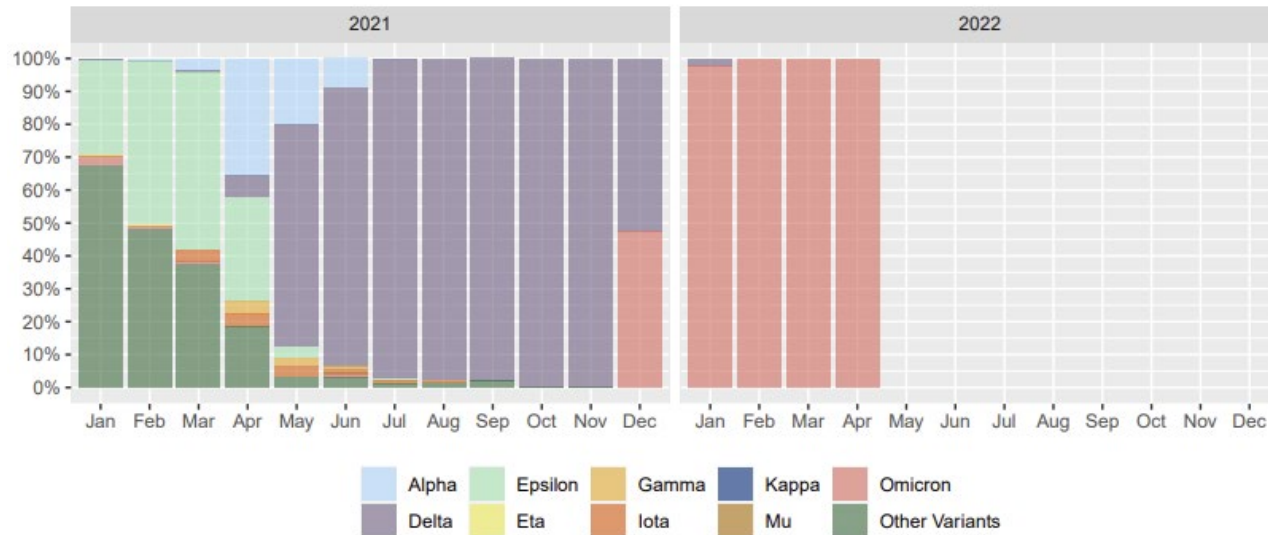
State modeling predicts this wave will peak in mid-May.

CASE RATES OF BAY AREA COUNTIES

Case rate per 100,000, excl prisoners (7 day avg w/ 7 day lag) for Multiple Locations



COVID-19 VARIANTS



- New subvariants of Omicron continue to emerge
 - BA.2 is most dominant subvariant in U.S. and accounts for 6% (116) of the 1,806 Omicron samples sequenced to date in Sonoma County.
 - BA.4 and BA.5 are responsible for a new case surge in South Africa and have been detected in the U.S.. No instances of BA.4 or BA.5 have yet been detected in Sonoma County.
- Initial research suggests that while these new Omicron subvariants are more transmissible, they are not associated with greater disease severity

OUTCOMES BY VACCINATION STATUS

Last Updated: 5/8/2022

[Data Notes](#)

Cases

Hospitalizations

Deaths

Case & Hospitalization Time Period: Past 90 days

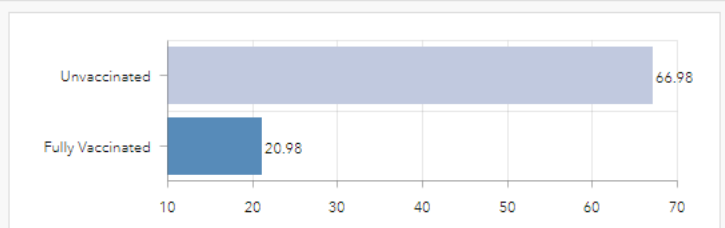
Death Time Period: Since January 1, 2021

People who are unvaccinated are
3.2X
more likely to be infected with COVID-19

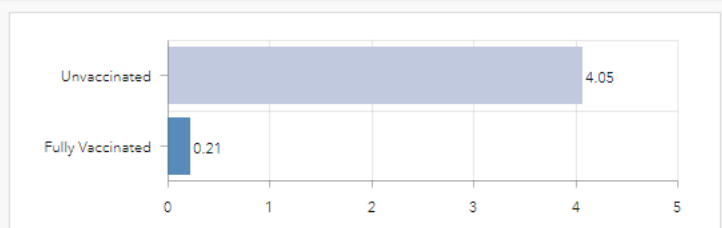
People who are unvaccinated are:
18.8X
more likely to be hospitalized for COVID-19

People who are unvaccinated are:
12.8X
more likely to die of COVID-19 related illness

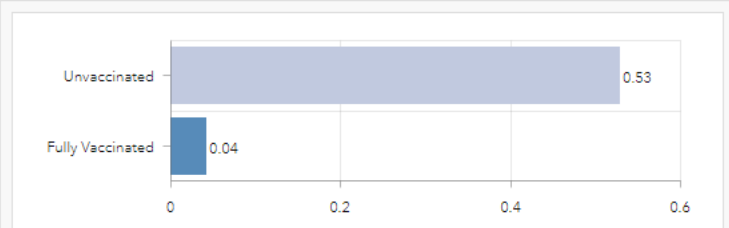
Past 90 days: new cases per 100,000 residents by vaccination status (age-adjusted case rate)



Past 90 days: new hospitalizations per 100,000 residents by vaccination status (age-adjusted hospitalization rate)



Since January 1, 2021: new deaths per 100,000 residents by vaccination status (age-adjusted death rate)



COUNTY VACCINATION PROGRESS IN CONTEXT

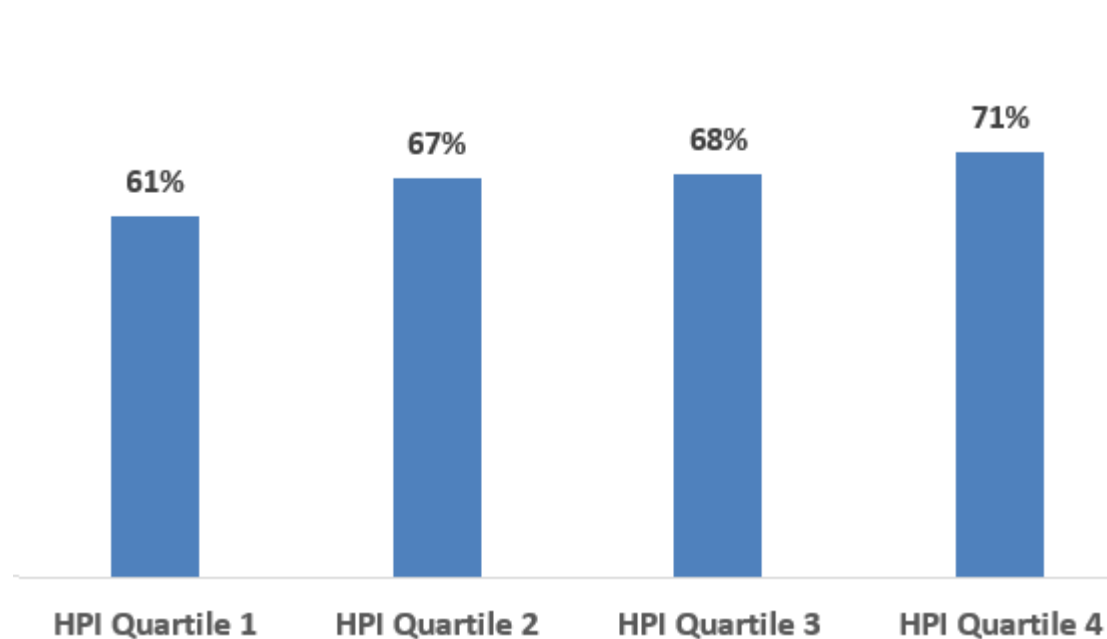
Sonoma County currently has the **10th highest vaccination rate** of the 58 counties in California:

- Population that is fully vaccinated: 78.6% (388,455 fully vaccinated)
 - **9% higher vaccination rate** than California
- Cumulative deaths per 100k: 99 (488 total deaths)
 - **56.4% less deaths** per 100k residents than California
- Cumulative cases per 100k: 17,903 (88,499 total cases)
 - **23.5% less cases** per 100k residents than California

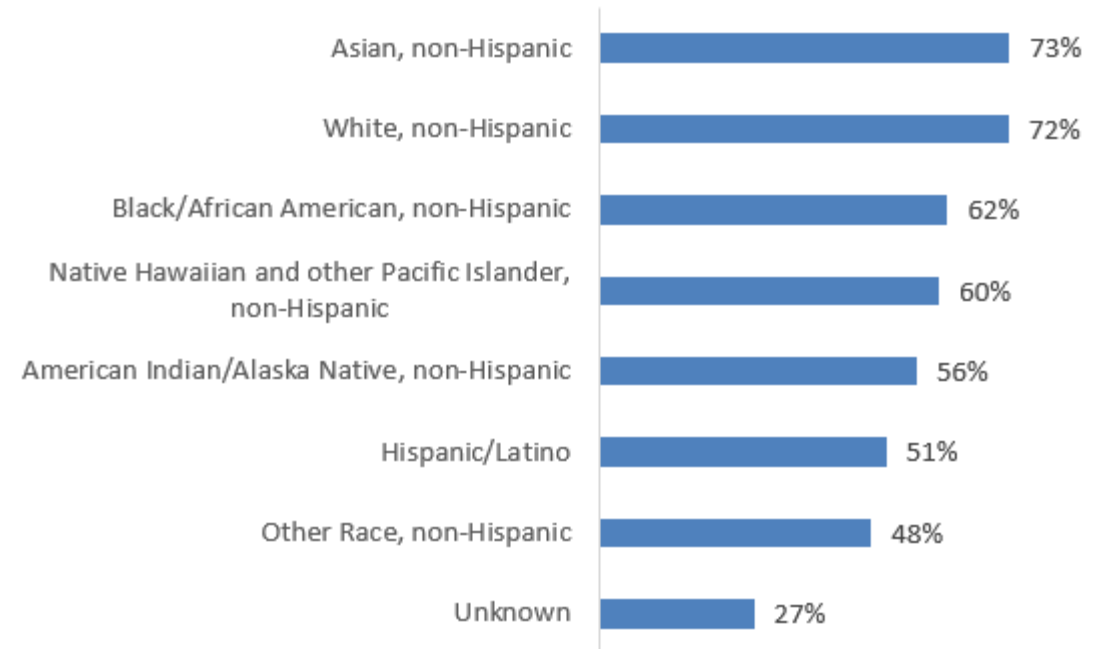
Source: Stacker.com; May 08, 2022

VACCINE BOOSTER DOSE ADMINISTRATION

Proportion of eligible 12+ year-olds with booster dose, by HPI Quartile



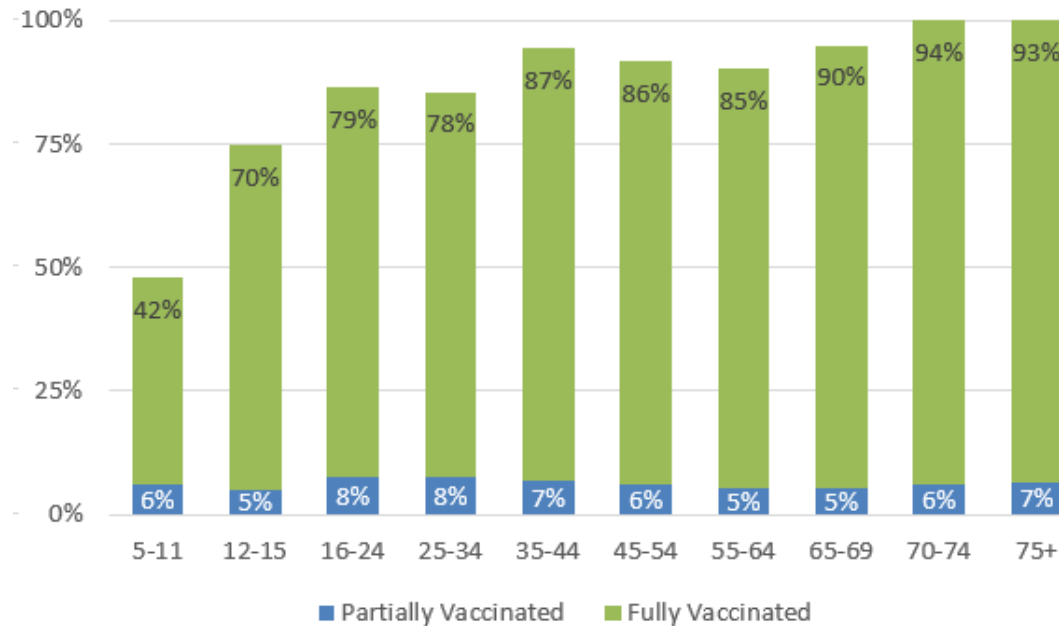
Proportion of eligible 12+ year-olds with booster dose, by Race/Ethnicity



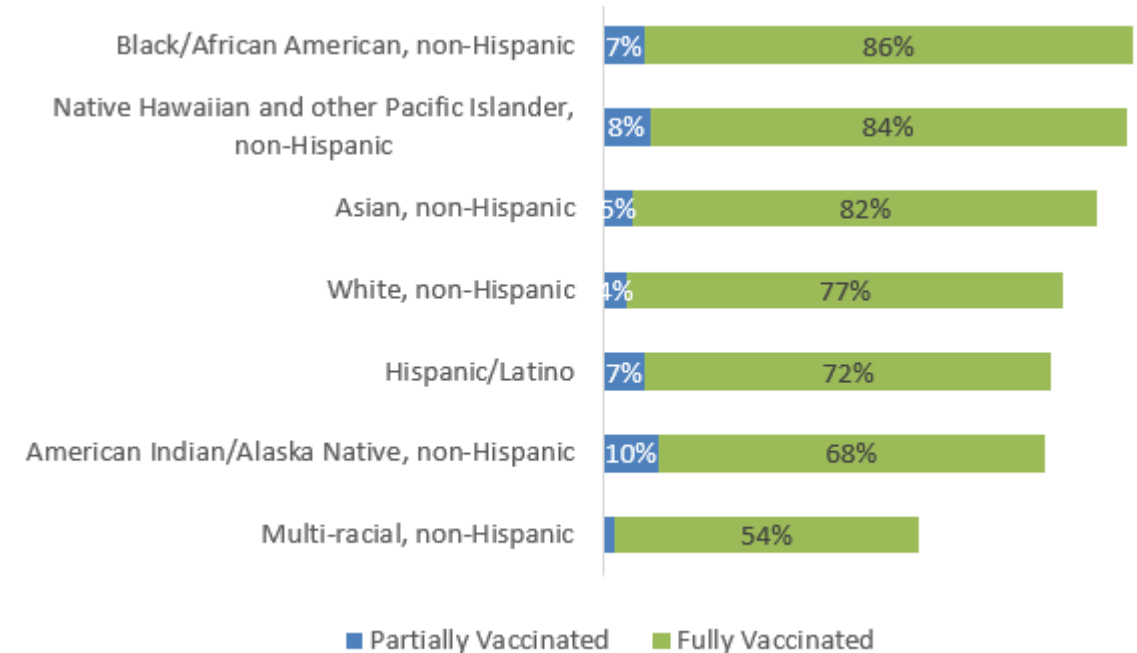
- 65.5% of currently eligible 12+ year-olds have received their booster doses
- 76.5% of eligible adults aged 50+ have received their booster dose

OVERALL VACCINE ADMINISTRATION

Vaccination Status, by Age Group

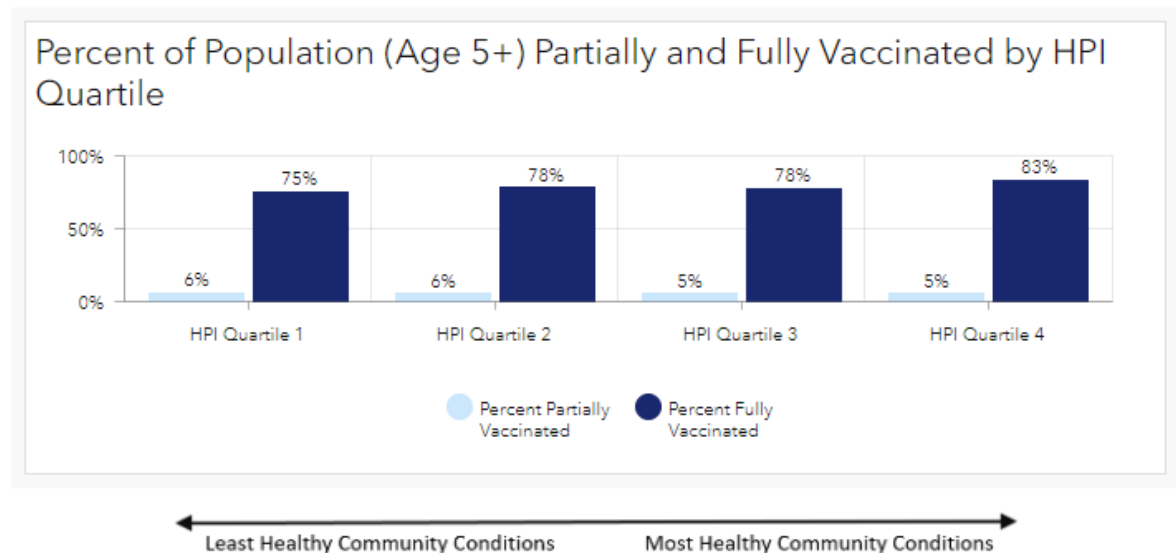
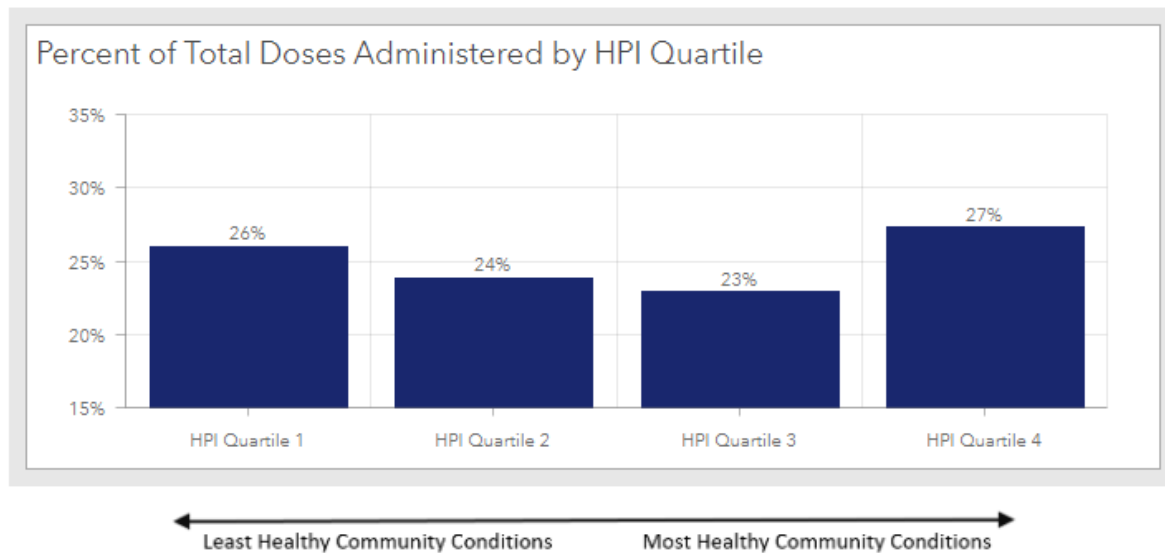


Vaccination Status, by Race/Ethnicity



89% of the Sonoma County population aged 5+ is at least partially vaccinated (**82%** fully; **7%** partially).

VACCINE EQUITY MEASURES



Currently, 26% of vaccine doses have been administered to residents in the lowest quartile of the Healthy Places Index in which residents have access to the fewest resources.

- 81% of residents aged 5+ in this quartile are at least partially vaccinated (6% partially; 75% fully)