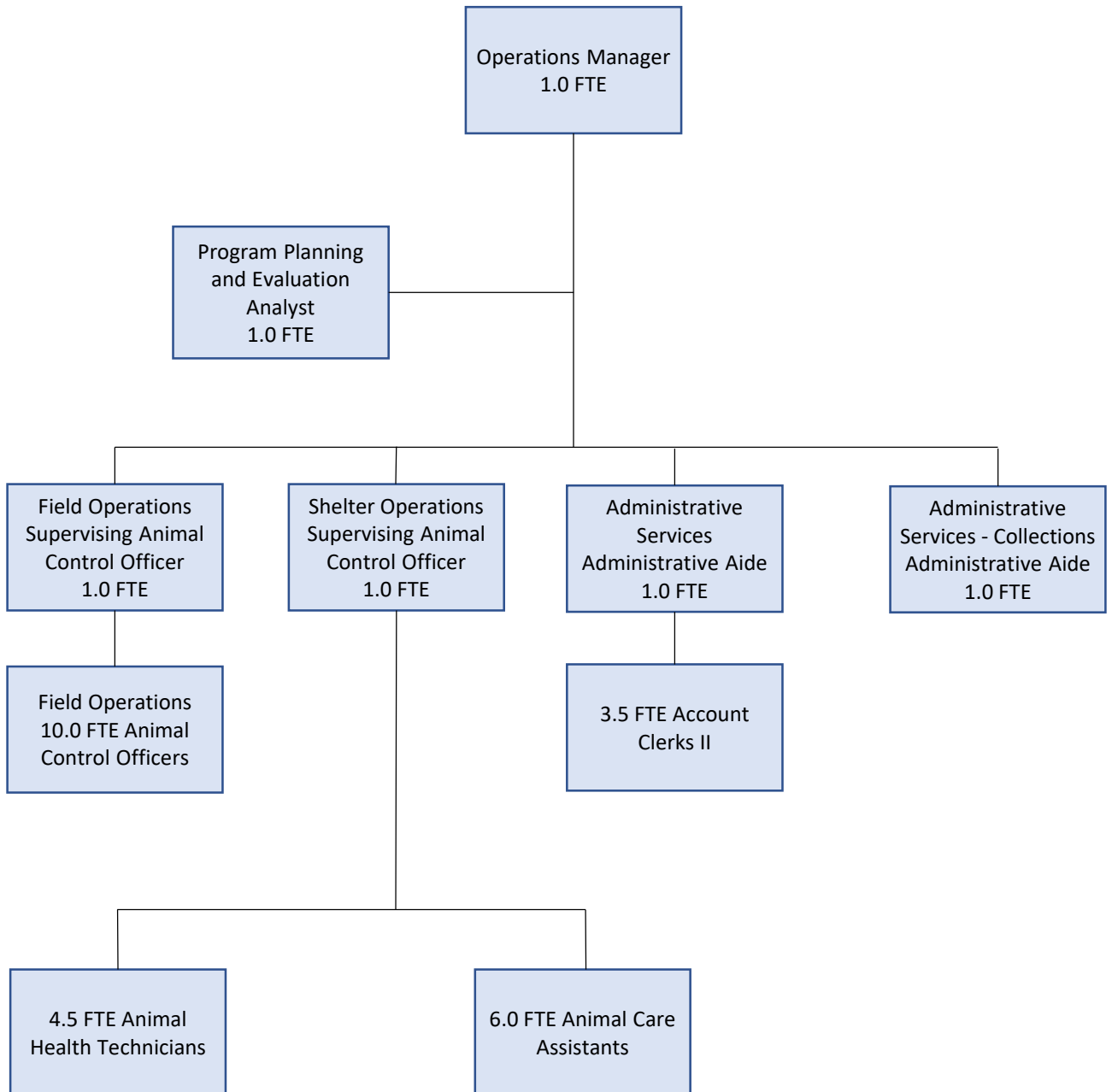
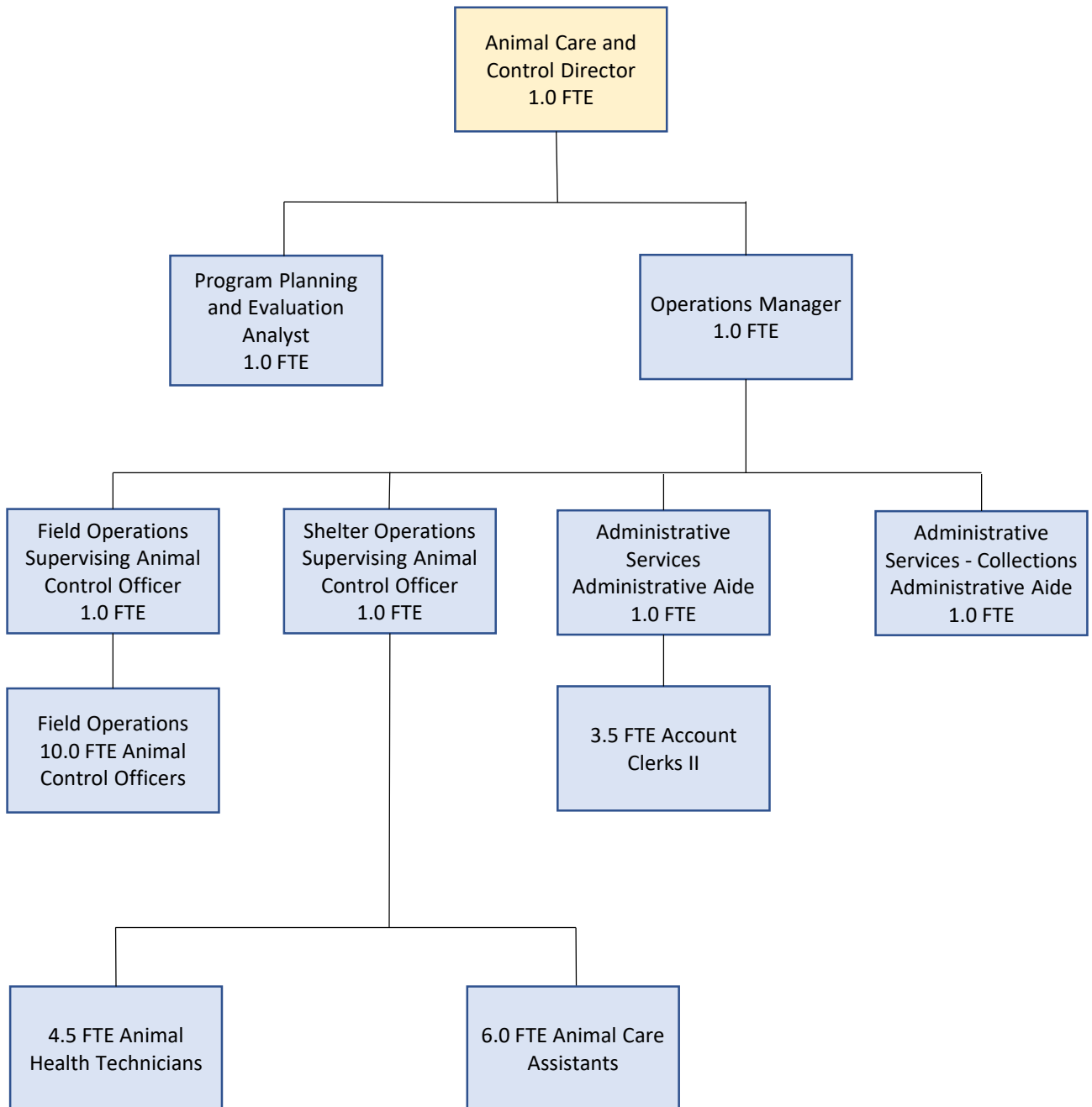


**Current Organizational Chart**  
**DEPARTMENT OF HEALTH SERVICES**  
**ANIMAL SERVICES, 30.0 FTE**



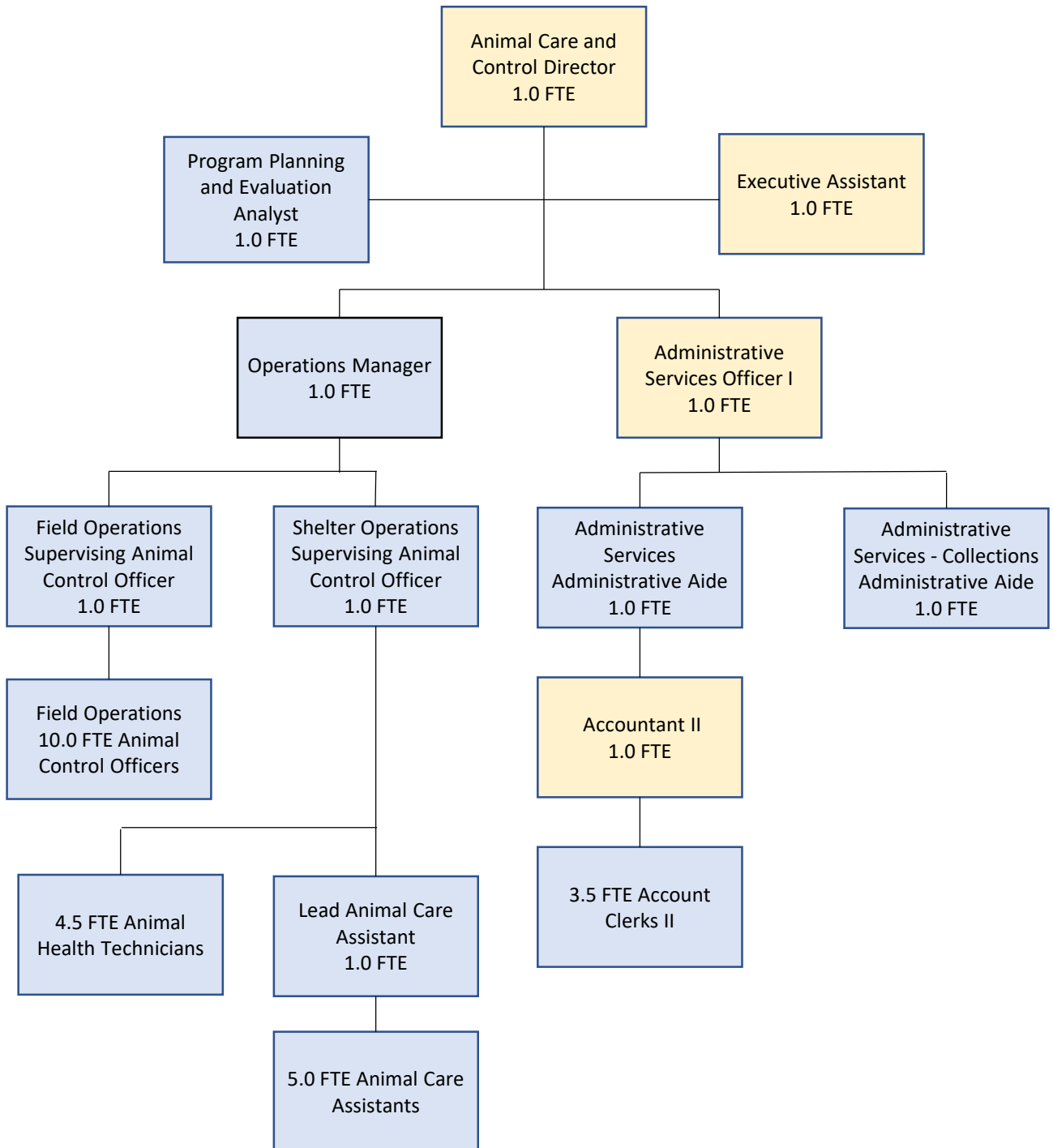
**Proposed Organizational Chart  
REMAIN IN DEPARTMENT OF HEALTH  
SERVICES WITH ADJUSTMENTS  
ANIMAL SERVICES, 31.0 FTE**



**Proposed change:** re-allocate Animal Care and Control Director, which was deleted in 2019

# Proposed Organizational Chart

## STANDALONE DEPARTMENT, 34.0 FTE



**Proposed changes:** re-allocate Animal Care and Control Director, add Executive Assistant, add ASO I, and add Accountant II, convert 1 Animal Care Assistant to Lead Animal Care Assistant