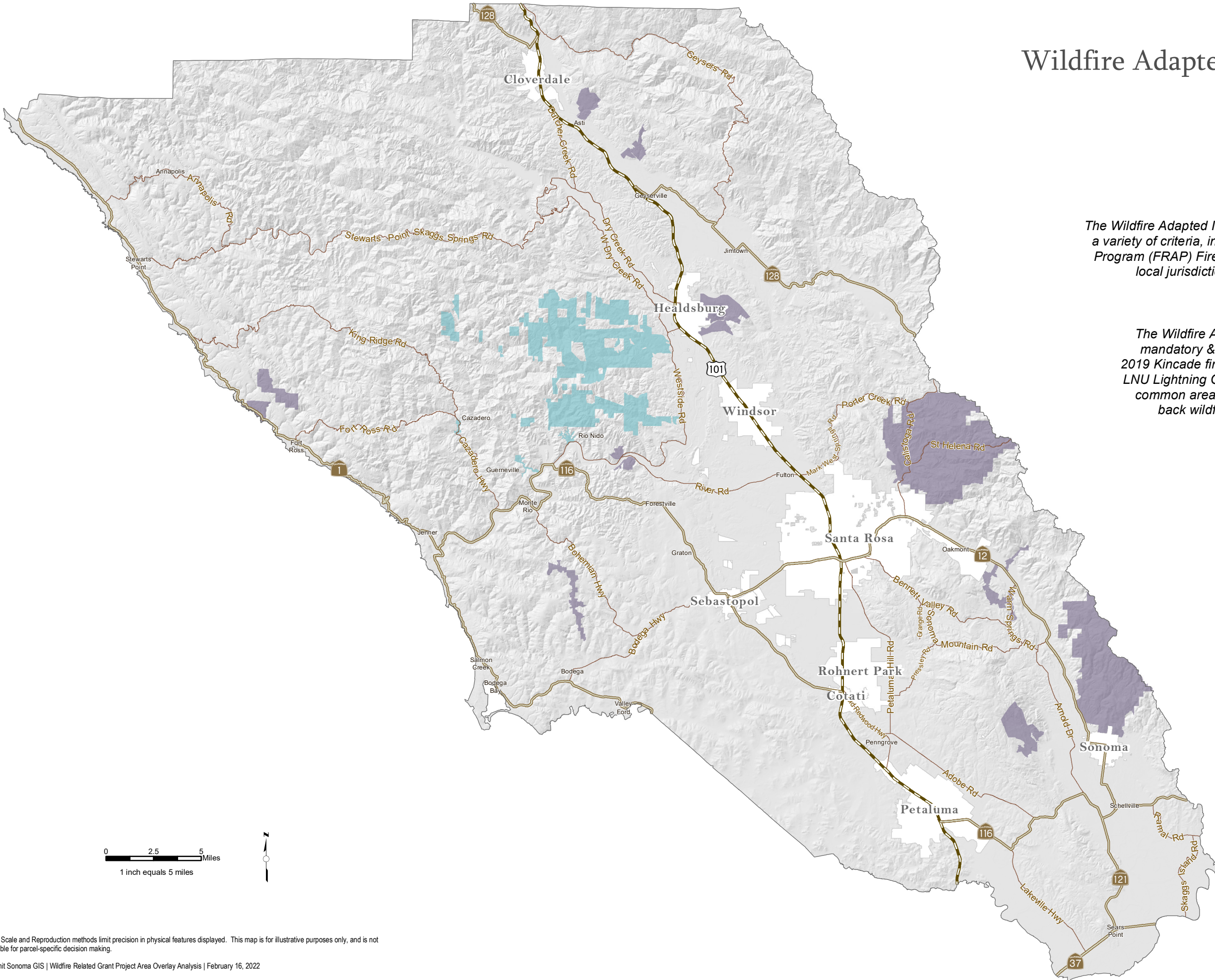


Wildfire Adapted I & II Sonoma County Overlay Analysis



Grant Project Area

Wildfire Adapted I Project Area | 37,326.31 ac

The Wildfire Adapted I Sonoma County Project Area were selected using a variety of criteria, including CAL FIRE Fire Resource and Assessment Program (FRAP) Fire Hazard Severity Zone data, and consultation with local jurisdiction chiefs to determine and address highest needs.

Wildfire Adapted II Project Area | 19,417.26 ac

The Wildfire Adapted II Sonoma County Project Area represents mandatory & warning evacuation common areas, outside of the 2019 Kincadee fire perimeter as well as within & outside of the 2020 LNU Lightning Complex | Walbridge & Meyers fire perimeters. The common areas are impacted communities experiencing back-to-back wildfire incidents within a time space of eleven months.

WA I overlap WA II = 0%

Basemap Data

- City Limit
- Federal Highway
- State Highway
- Road