

## Attachment E

### Immigrant Data

#### **MTC/ABAG (Metropolitan Transportation Commission / Association of Bay Area Governments):**

1. MTC provides access to various datasets related to demographics, transportation, and regional planning, which can offer insights into immigrant communities' mobility patterns and access to services.
2. Equity Priority Communities (EPCs), formerly known as Communities of Concern, are census tracts with significant concentrations of underserved populations, including households with low incomes and people of color. These designations help direct funding toward projects that promote equitable access to transportation, housing, and other services. A map of Bay Area EPCs can be found as **Attachment X**. Using data from the US Census, the Plan Bay Area 2050+ identified 16 EPC census tracts in Sonoma County.

#### **SCTA/RCPA (Sonoma County Transportation Authority / Regional Climate Protection Authority):**

1. SCTA has developed an online map to identify disadvantaged communities in Sonoma County using various criteria. This map includes designations such as MTC-adopted Communities of Concern and SCTA-defined Communities of Concern, which consider factors like ethnicity, income, English proficiency, and more.
2. RCPA data, though not explicitly focused on immigrant communities, could help identify climate vulnerabilities affecting them, such as disproportionate exposure to extreme heat, wildfires, and other hazards. This data can also inform the need for targeted resilience initiatives and equitable disaster response planning.

#### **USC CA Immigrant Data Portal**

1. **Demographic Insights** – Total immigrant population, country of origin breakdown, age distribution, and language proficiency (including Limited English Proficiency rates).
2. **Economic & Workforce Trends** – Employment rates by industry and occupation, contributions to key economic sectors, median household income, and poverty rates.
3. **Immigration Status & Legal Pathways** – Estimates of lawful permanent residents (LPRs), undocumented population size, DACA-eligible individuals, and naturalization rates.
4. **Educational Attainment** – Levels of education completed, higher education enrollment, and disparities in educational access.
5. **Public Benefits & Social Services** – Participation in public assistance programs (e.g., SNAP, Medi-Cal), barriers to access, and health insurance coverage.
6. **Civic Engagement & Integration** – Voter registration among naturalized citizens, naturalization trends, and community participation.
7. **Housing & Living Conditions** – Homeownership vs. rental rates, housing cost burden, and geographic distribution of immigrant populations.

#### **UC Merced Community and Labor Center**

The UC Merced Community and Labor Center's Farmworker Health Study Data Dashboard provides comprehensive data on the health and well-being of California's agricultural workers. This resource

## **Attachment G**

is based on a study conducted between July 2021 and April 2022, involving 1,242 farmworkers across five California regions (including Sonoma/Napa), with surveys administered in six languages.

### **Key Data Categories Available:**

#### **1. Demographic Information:**

- Age, gender, and ethnicity of farmworkers.
- Primary languages spoken, including Indigenous languages.

#### **2. Employment and Working Conditions:**

- Employment status and type (e.g., direct hire vs. labor contractor).
- Compliance with labor laws, including rest breaks and wage payments.
- Exposure to occupational hazards such as heat, wildfire smoke, and pesticide use.

#### **3. Health Status:**

- Prevalence of chronic conditions like diabetes and hypertension.
- Mental health indicators, including anxiety and depression rates.
- Women's health data, including rates of preterm births and low birthweight infants.

#### **4. Healthcare Access:**

- Health insurance coverage status.
- Utilization of healthcare services and barriers to access.
- Use of preventive health services and health behaviors.

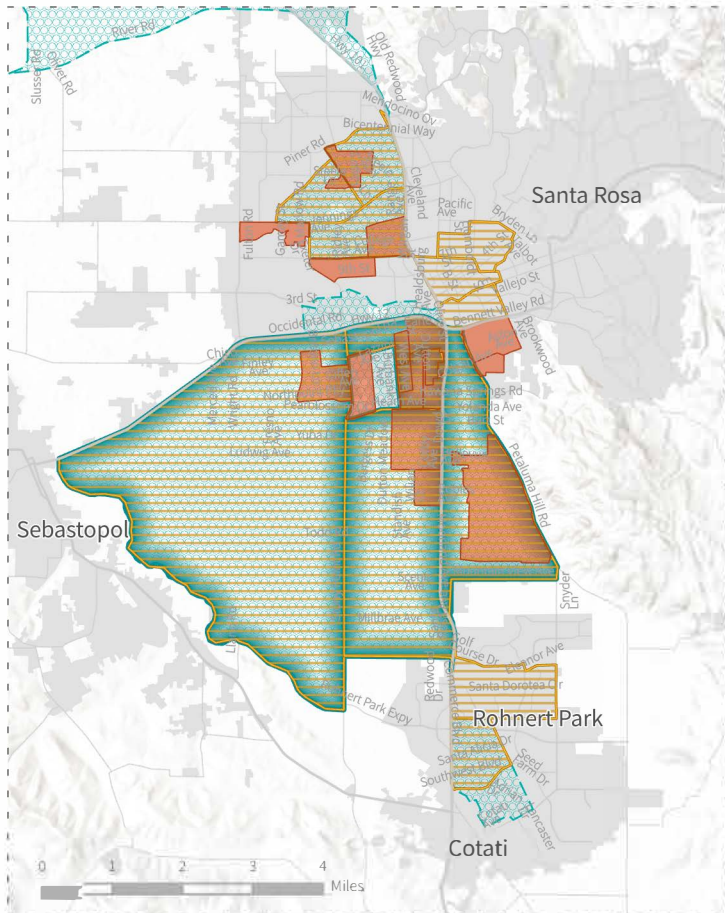
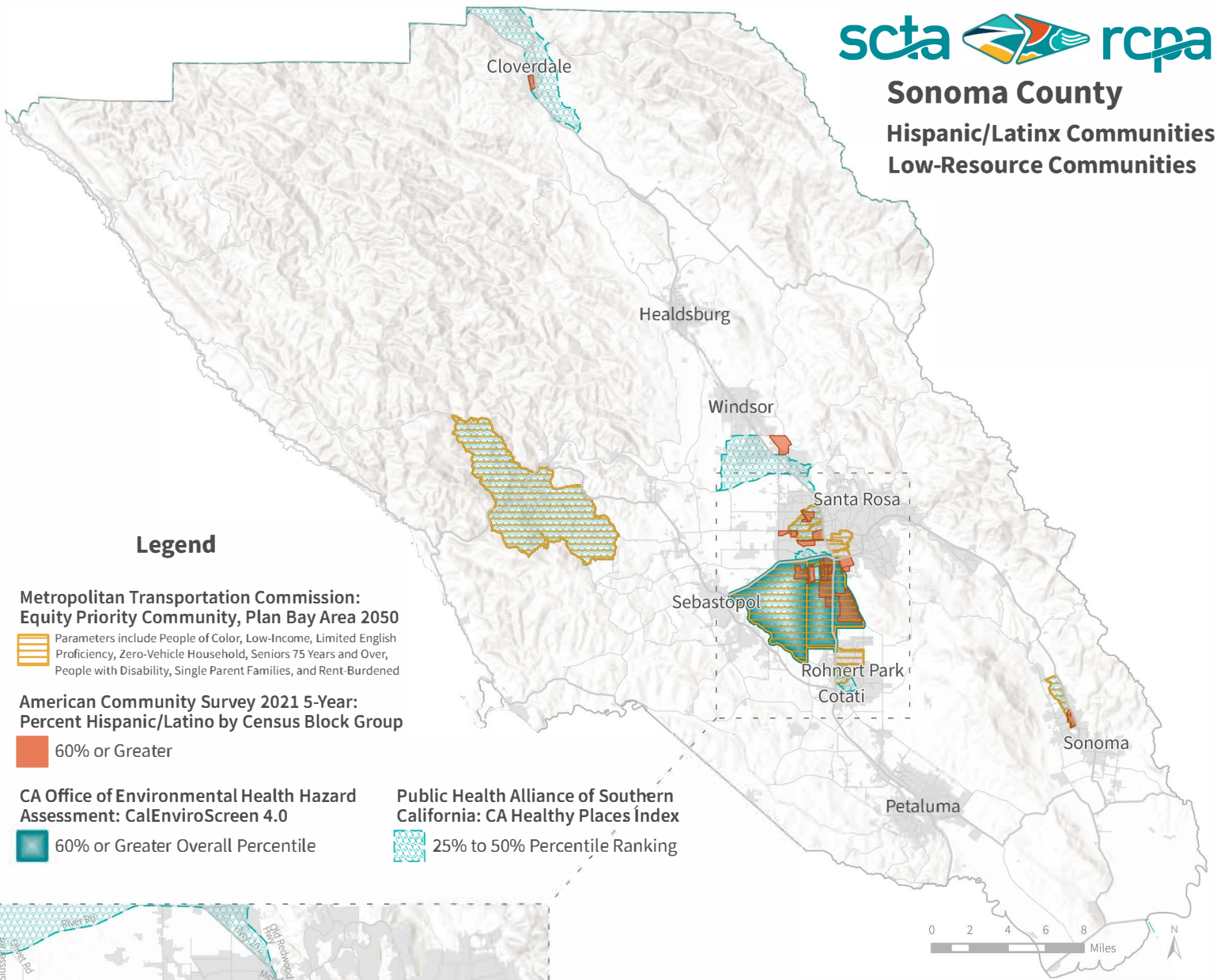
#### **5. Socioeconomic Factors:**

- Food security levels and housing conditions.
- Economic challenges, including difficulties in paying for necessities.

# Sonoma County

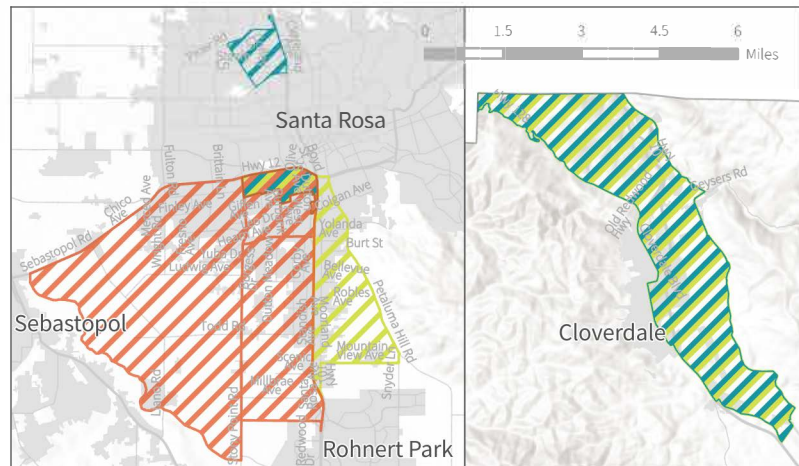
## Hispanic/Latinx Communities

## Low-Resource Communities



### CalEnviroScreen Population Characteristics

The following maps show areas in Sonoma County with the highest burden from Asthma, Linguistic Isolation, and Poverty.



### Legend

**CA Office of Environmental Health Hazard Assessment: CalEnviroScreen 4.0**

- 75% or Greater Asthma Percentile
- 75% or Greater Linguistic Isolation Percentile
- 75% or Greater Poverty Percentile



# EQUITY PRIORITY COMMUNITIES

## AMERICAN COMMUNITY SURVEY 2014-2018

### TRACTS WITHIN URBANIZED AREA

- Equity Priority Communities
- Census Designated Urbanized Area

The Equity Priority Communities (tract geography) dataset is based upon eight demographic variables:

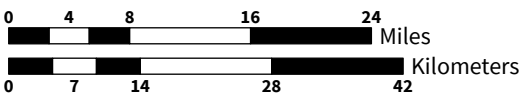
1. People of Color (70% threshold)
2. Low-Income (28% threshold)
3. Limited English Proficiency (12% threshold)
4. Seniors 75 Years and Over (8% threshold)
5. Zero-Vehicle Households (15% threshold)
6. Single Parent Families (18% threshold)
7. People with a Disability (12% threshold)
8. Rent-Burdened Households (14% threshold)

If a tract exceeds both threshold values for Low-Income and People of Color shares OR exceeds the threshold value for Low-Income AND also exceeds the threshold values for three or more variables (#3 to #8), it is an Equity Priority Community.

#### REGIONAL TRANSPORTATION

- Rail
- Major Road
- Highway and Interstate

Oakland	> 350,000
Novato	50,000 - 350,000
Pacifica	<50,000



Source: TomTom North America (2019);  
Census, American Community Survey 5 Year Estimates (2018);  
Map Author: JC, March 2021

