

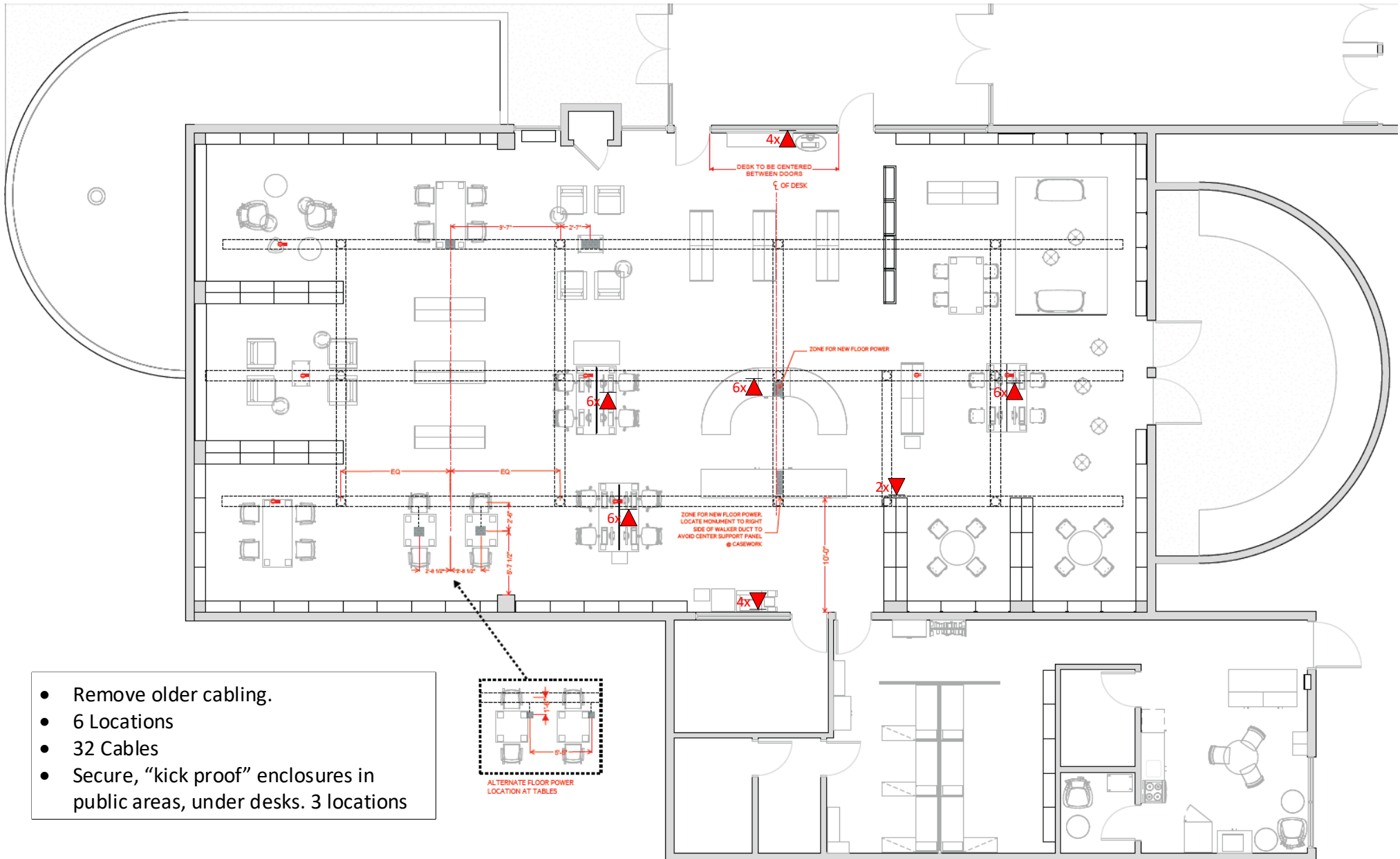
- CHAIR
- TABLE
- LOUNGE
- WORKSTATION/STORAGE
- ACCESSORIES
- LIBRARY FIXTURES



**LIBRARY FIXTURES - ITEMIZED LIST**

- (8) MOBILE SHELVING - DOUBLE WIDE
- (1) PERIODICAL SHELVING WITH SLATWALL ABOVE @ ADULT AREA
- (1) BOOKSHELVES WITH SLATWALL ABOVE @ TEEN AREA
- (2) SLATWALL END PANEL - FULL HEIGHT @ ADULT AREA
- (1) SLATWALL END PANEL - HALF HEIGHT AT CHILDREN'S AREA
- (1) CIRC DESK
- (1) HOLDS SHELVING - NEW CANTILEVER SHELVING TO MATCH EXISTING LIBRARY STANDARDS WITH END PANELS AND CANOPY TOP, 40"H MAX
- \*ACRYLIC SLATWALL ACCESSORIES TO BE SEPARATE ORDER AFTER INSTALLATION

\*SCOPE SHOWN IN GREY ON PLAN



- Remove older cabling.
- 6 Locations
- 32 Cables
- Secure, "kick proof" enclosures in public areas, under desks. 3 locations

# Guerneville Regional Library

