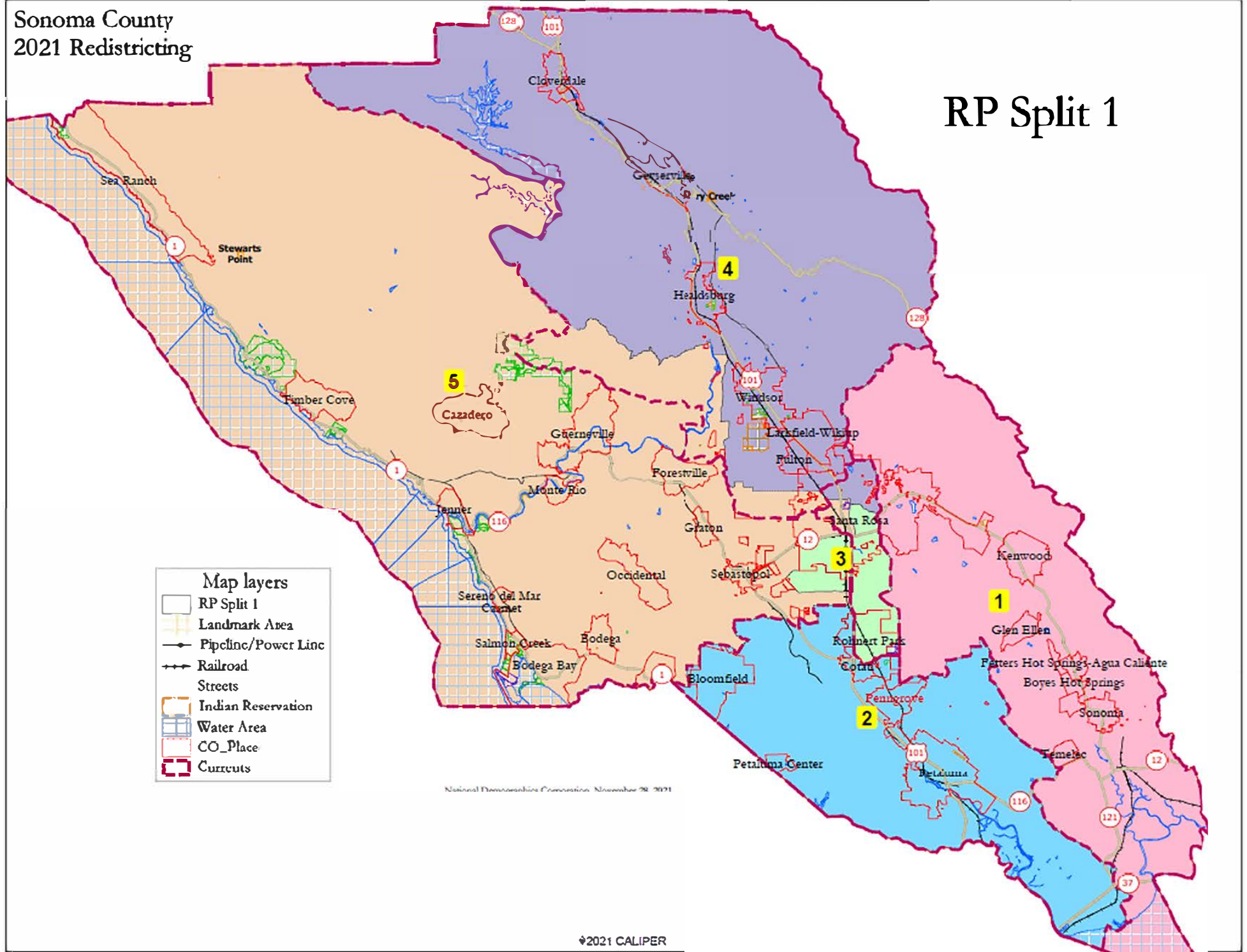


Sonoma County
2021 Redistricting

RP Split 1



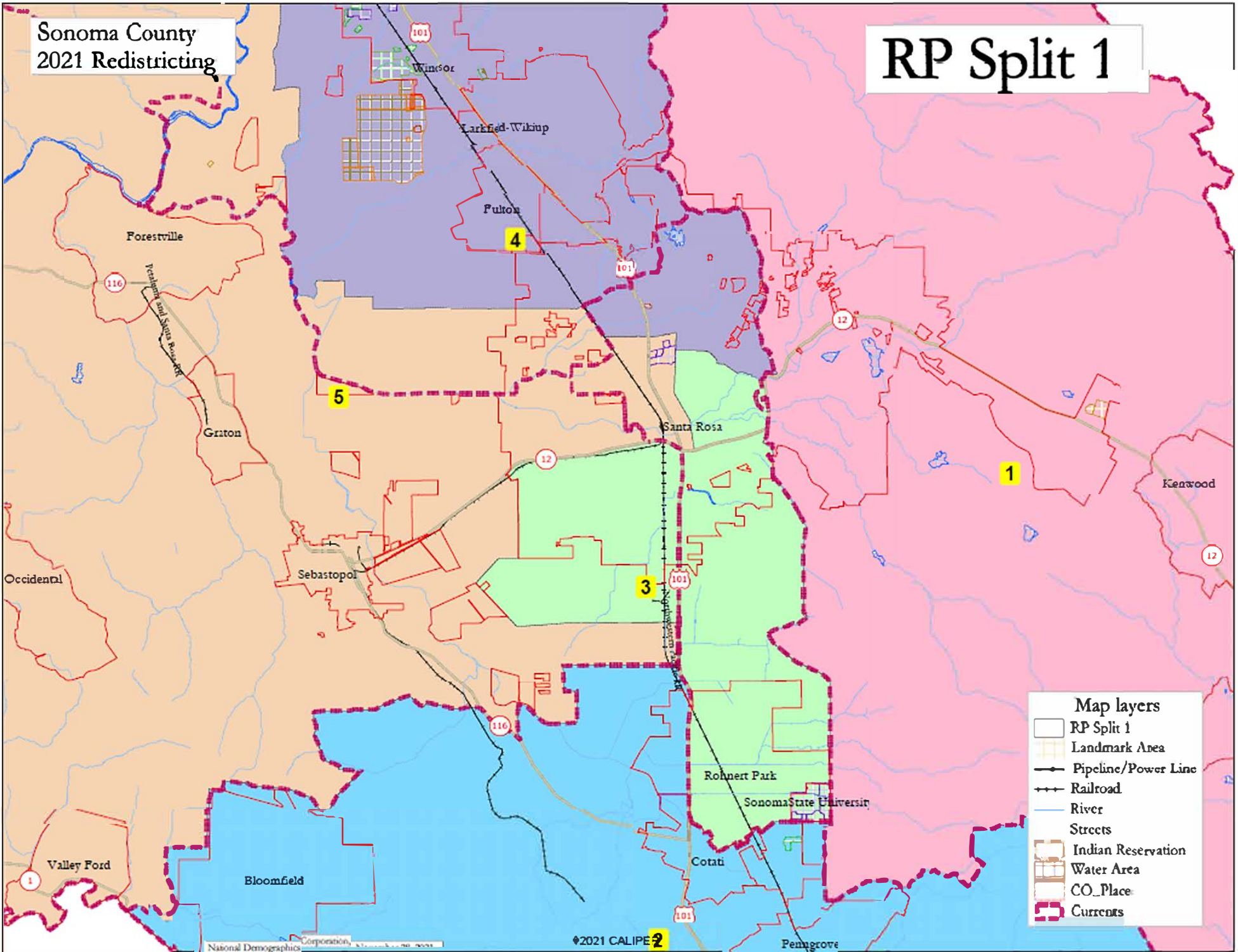
Map layers

- RP Split 1
- Landmark Area
- Pipeline/Power Line
- Railroad
- Streets
- Indian Reservation
- Water Area
- CO_Place
- Currcuts

National Democratic Convention, November 28, 2021

Sonoma County 2021 Redistricting

RP Split 1



Map layers

- RP Split 1
- Landmark Area
- Pipeline/Power Line
- Railroad
- River
- Streets
- Indian Reservation
- Water Area
- CO_Place
- Currents

RP Split 1							
District		1	2	3	4	5	Total
	Total Pop	93,661	100,240	100,740	97,383	97,686	489,710
	Deviation from ideal	-4,281	2,298	2,798	-559	-256	7,079
	% Deviation	-4.37%	2.35%	2.86%	-0.57%	-0.26%	7.23%
Total Pop	% Hisp	21.4%	23%	42%	31%	27%	29%
	% NH White	68%	65%	42%	58%	60%	58%
	% NH Black	1%	2%	3%	2%	2%	2%
	% Asian-American	5%	6%	9%	5%	5%	6%
Citizen Voting Age Pop	Total	72,668	73,364	64,612	71,766	74,081	356,490
	% Hisp	11%	13%	25%	20%	14%	16%
	% NH White	83%	79%	63%	72%	78%	75%
	% NH Black	1%	2%	3%	2%	1%	2%
	% Asian/Pac.Isl.	4%	5%	7%	4%	4%	5%
Voter Registration (Nov 2020)	Total	64,185	65,208	49,102	61,722	62,330	302,547
	% Latino est.	10%	12%	25%	17%	14%	15%
	% Spanish-Surnamed	9%	11%	23%	16%	13%	14%
	% Asian-Surnamed	2%	2%	3%	2%	2%	2%
	% Filipino-Surnamed	1%	1%	1%	1%	1%	1%
	% NH White est.	86%	84%	69%	79%	82%	81%
Voter Turnout (Nov 2020)	Total	58,229	58,720	41,473	55,111	55,036	268,569
	% Latino est.	9%	11%	23%	16%	12%	14%
	% Spanish-Surnamed	9%	10%	21%	15%	11%	13%
	% Asian-Surnamed	2%	2%	3%	2%	2%	2%
	% Filipino-Surnamed	1%	1%	1%	1%	1%	1%
	% NH White est.	87%	84%	70%	80%	84%	82%
Voter Turnout (Nov 2018)	Total	48,199	45,853	29,318	42,279	43,609	209,258
	% Latino est.	7%	9%	18%	13%	9%	10%
	% Spanish-Surnamed	7%	8%	17%	12%	9%	10%
	% Asian-Surnamed	2%	2%	2%	2%	1%	2%
	% Filipino-Surnamed	1%	1%	1%	1%	1%	1%
	% NH White est.	90%	87%	76%	84%	87%	85%
ACS Pop. Est.	Total	96,057	100,387	99,959	100,686	102,684	499,772
	% NH Black est.	1%	1%	3%	1%	1%	1%
Age	age0-19	19%	22%	26%	23%	20%	22%
	age20-60	45%	53%	56%	50%	52%	51%
	age60plus	36%	25%	18%	26%	28%	26%
Immigration	immigrants	14%	14%	22%	15%	17%	16%
	naturalized	48%	48%	41%	46%	40%	44%
Language spoken at home	english	81%	79%	62%	74%	76%	74%
	spanish	13%	15%	31%	21%	19%	20%
	asian-lang	3%	2%	4%	2%	2%	3%
	other lang	4%	3%	3%	3%	3%	3%
Language Fluency	Speaks Eng. "Less than Very Well"	7%	9%	17%	12%	11%	11%
Education (among those age 25+)	hs-grad	39%	44%	48%	43%	45%	44%
	bachelor	26%	25%	17%	22%	21%	22%
	graduatedegree	18%	13%	8%	12%	14%	13%
Child in Household	child-under18	22%	29%	34%	30%	24%	28%
Pct of Pop. Age 16+	employed	59%	66%	69%	65%	66%	65%
Household Income	income 0-25k	12%	11%	15%	11%	15%	13%
	income 25-50k	16%	15%	20%	15%	18%	17%
	income 50-75k	16%	16%	20%	15%	17%	17%
	income 75-200k	42%	45%	40%	46%	41%	43%
	income 200k-plus	15%	13%	5%	12%	10%	11%
Housing Stats	single family	84%	82%	68%	82%	83%	80%
	multi-family	16%	18%	32%	18%	17%	20%
	rented	34%	36%	51%	35%	38%	39%
	owned	66%	64%	49%	65%	62%	61%

Total population data from the 2020 Decennial Census.

Surname-based Voter Registration and Turnout data from the California Statewide Database.

Latino voter registration and turnout data are Spanish-surname counts adjusted using Census Population Department undercount estimates. NH White and NH Black registration and turnout counts estimated by NDC. Citizen Voting Age Pop., Age, Immigration, and other demographics from the 2015-2019 American Community Survey and Special Tabulation 5-year data.