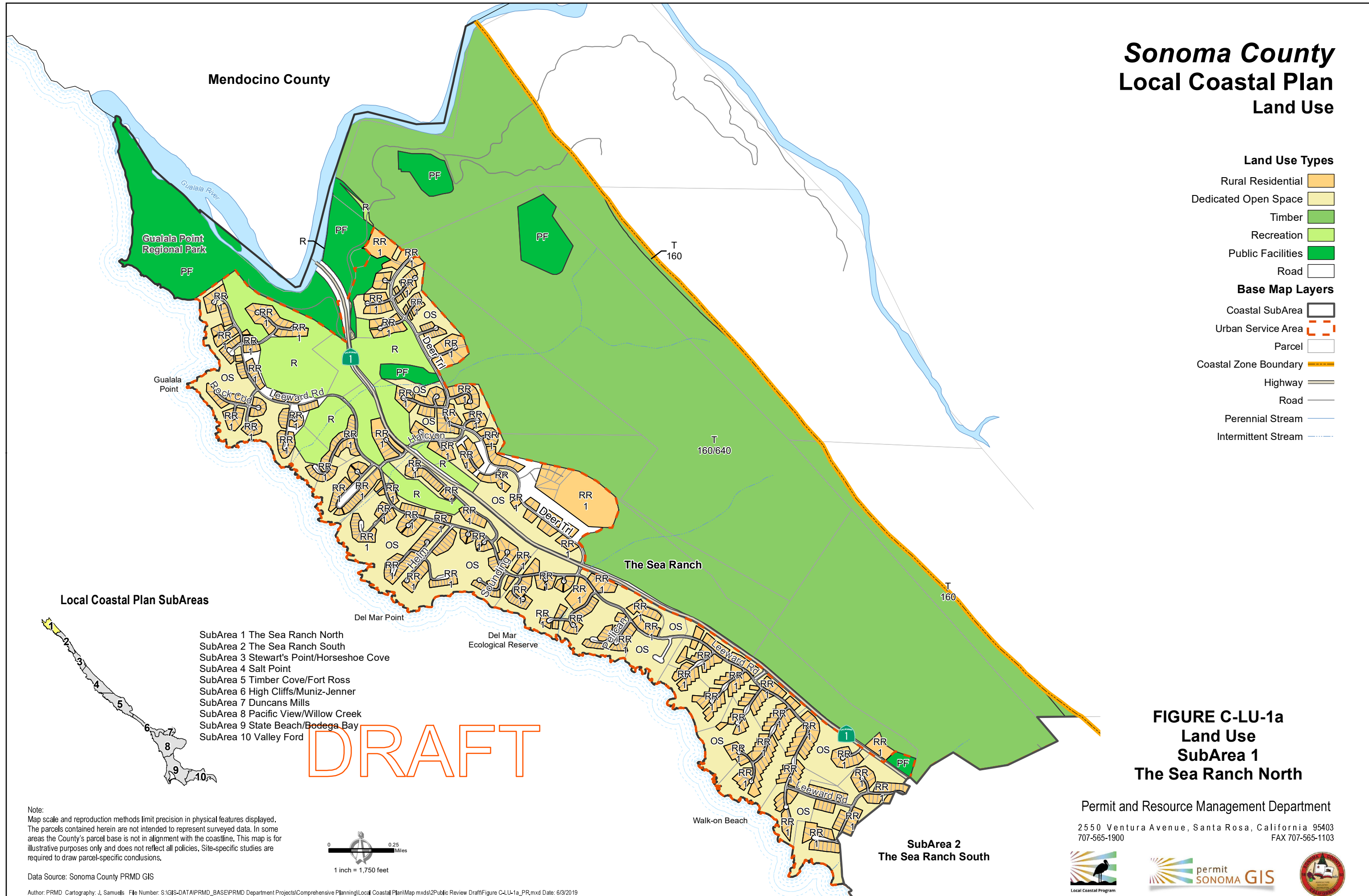


Sonoma County Local Coastal Plan Land Use



- Land Use Types**
- Rural Residential
 - Dedicated Open Space
 - Timber
 - Recreation
 - Public Facilities
 - Road
- Base Map Layers**
- Coastal SubArea
 - Urban Service Area
 - Parcel
 - Coastal Zone Boundary
 - Highway
 - Road
 - Perennial Stream
 - Intermittent Stream

Local Coastal Plan SubAreas

- SubArea 1 The Sea Ranch North
- SubArea 2 The Sea Ranch South
- SubArea 3 Stewart's Point/Horseshoe Cove
- SubArea 4 Salt Point
- SubArea 5 Timber Cove/Fort Ross
- SubArea 6 High Cliffs/Muniz-Jenner
- SubArea 7 Duncans Mills
- SubArea 8 Pacific View/Willow Creek
- SubArea 9 State Beach/Bodega Bay
- SubArea 10 Valley Ford

DRAFT

Note:
Map scale and reproduction methods limit precision in physical features displayed. The parcels contained herein are not intended to represent surveyed data. In some areas the County's parcel base is not in alignment with the coastline. This map is for illustrative purposes only and does not reflect all policies. Site-specific studies are required to draw parcel-specific conclusions.



Data Source: Sonoma County PRMD GIS

Author: PRMD Cartography: J. Samuels File Number: S:\GIS-DATA\PRMD_BASE\PRMD Department Projects\Comprehensive Planning\Local Coastal Plan\Map mxd\2Public Review Draft\Figure C-LU-1a_PR.mxd Date: 6/3/2019

**FIGURE C-LU-1a
Land Use
SubArea 1
The Sea Ranch North**

Permit and Resource Management Department
2550 Ventura Avenue, Santa Rosa, California 95403
707-565-1900 FAX 707-565-1103










Sonoma County Local Coastal Plan Land Use









SubArea 1
The Sea Ranch North

The Sea Ranch

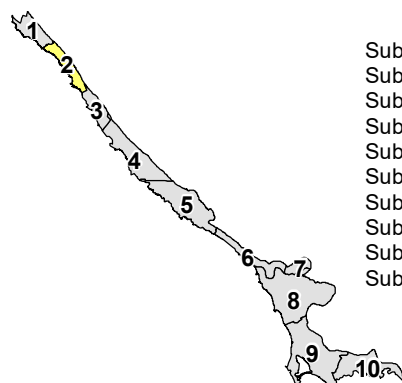
Land Use Types

- Rural Residential 
- Commercial Services 
- Commercial Tourist 
- Dedicated Open Space 
- Timber 
- Public Facilities 
- Road 

Base Map Layers

- Coastal SubArea 
- Urban Service Area 
- Parcel 
- Coastal Zone Boundary 
- Highway 
- Road 
- Perennial Stream 
- Intermittent Stream 

Local Coastal Plan SubAreas



- SubArea 1 The Sea Ranch North
- SubArea 2 The Sea Ranch South
- SubArea 3 Stewart's Point/Horseshoe Cove
- SubArea 4 Salt Point
- SubArea 5 Timber Cove/Fort Ross
- SubArea 6 High Cliffs/Muniz-Jenner
- SubArea 7 Duncans Mills
- SubArea 8 Pacific View/Willow Creek
- SubArea 9 State Beach/Bodega Bay
- SubArea 10 Valley Ford

DRAFT

**FIGURE C-LU-1b
Land Use
SubArea 2
The Sea Ranch South**

Note:
Map scale and reproduction methods limit precision in physical features displayed.
The parcels contained herein are not intended to represent surveyed data. In some areas the County's parcel base is not in alignment with the coastline. This map is for illustrative purposes only and does not reflect all policies. Site-specific studies are required to draw parcel-specific conclusions.



Data Source: Sonoma County PRMD GIS

Author: PRMD Cartography: J. Samuels File Number: S:\GIS-DATA\PRMD_BASE\PRMD Department Projects\Comprehensive Planning\Local Coastal Plan\Map mxd\Public Review Draft\Figure C-LU-1b_PR.mxd Date: 6/3/2019

Permit and Resource Management Department

2550 Ventura Avenue, Santa Rosa, California 95403
707-565-1900 FAX 707-565-1103

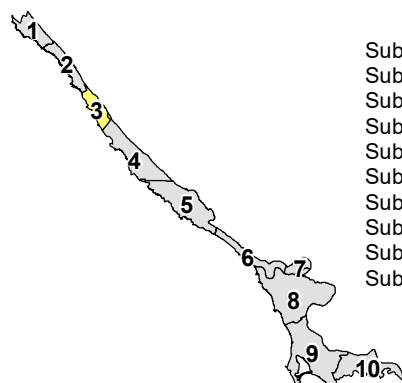


SubArea 3
Stewart's Point/Horseshoe Cove

Sonoma County Local Coastal Plan Land Use

- Land Use Types**
- Commercial Services ■
 - Land Extensive Agriculture ■
 - Timber ■
- Base Map Layers**
- Coastal SubArea
 - Parcel
 - Coastal Zone Boundary
 - Natural Coastline
 - Highway
 - Road
 - Perennial Stream
 - Intermittent Stream

Local Coastal Plan SubAreas



- SubArea 1 The Sea Ranch North
- SubArea 2 The Sea Ranch South
- SubArea 3 Stewart's Point/Horseshoe Cove
- SubArea 4 Salt Point
- SubArea 5 Timber Cove/Fort Ross
- SubArea 6 High Cliffs/Muniz-Jenner
- SubArea 7 Duncans Mills
- SubArea 8 Pacific View/Willow Creek
- SubArea 9 State Beach/Bodega Bay
- SubArea 10 Valley Ford

DRAFT

Note:
Map scale and reproduction methods limit precision in physical features displayed.
The parcels contained herein are not intended to represent surveyed data. In some areas the County's parcel base is not in alignment with the coastline. This map is for illustrative purposes only and does not reflect all policies. Site-specific studies are required to draw parcel-specific conclusions.

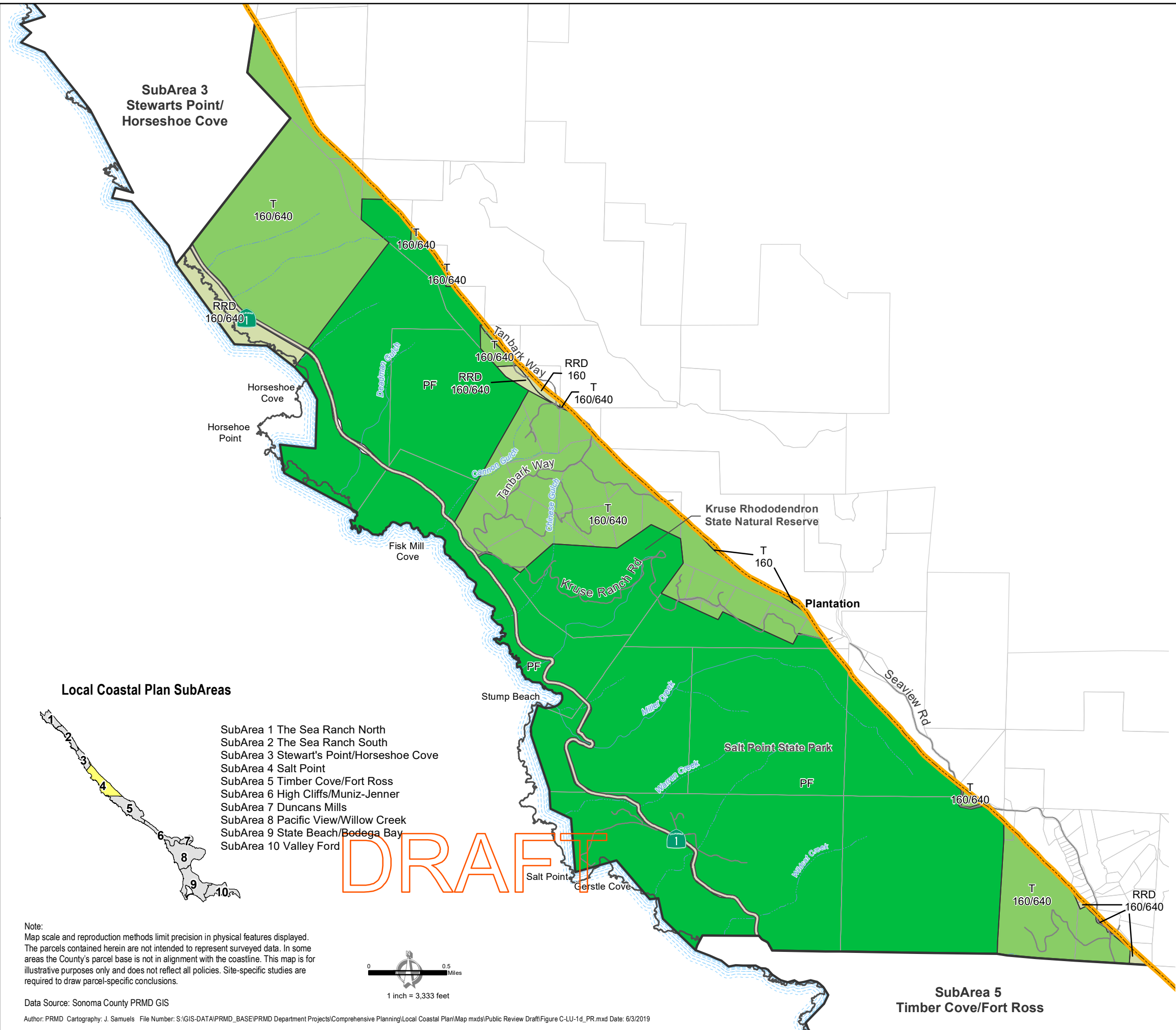


Data Source: Sonoma County PRMD GIS

Author: PRMD Cartography: J. Samuels File Number: S:\GIS-DATA\PRMD_BASE\PRMD Department Projects\Comprehensive Planning\Local Coastal Plan\Map mxd\Public Review Draft\Figure C-LU-1c_PR.mxd Date: 6/3/2019



Sonoma County Local Coastal Plan Land Use



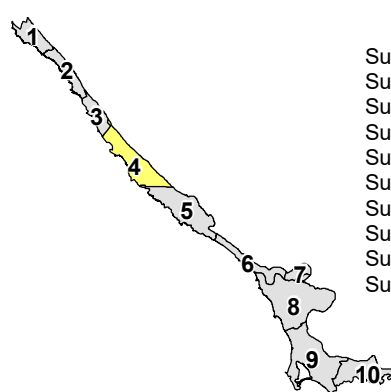
Land Use Types

- Resources and Rural Development
- Timber
- Public Facilities

Base Map Layers

- Coastal SubArea
- Parcel
- Coastal Zone Boundary
- Natural Coastline
- Highway
- Road
- Perennial Stream
- Intermittent Stream

Local Coastal Plan SubAreas



- SubArea 1 The Sea Ranch North
- SubArea 2 The Sea Ranch South
- SubArea 3 Stewart's Point/Horseshoe Cove
- SubArea 4 Salt Point
- SubArea 5 Timber Cove/Fort Ross
- SubArea 6 High Cliffs/Muniz-Jenner
- SubArea 7 Duncans Mills
- SubArea 8 Pacific View/Willow Creek
- SubArea 9 State Beach/Bodega Bay
- SubArea 10 Valley Ford

DRAFT

**FIGURE C-LU-1d
Land Use
SubArea 4
Salt Point**

Note:
Map scale and reproduction methods limit precision in physical features displayed. The parcels contained herein are not intended to represent surveyed data. In some areas the County's parcel base is not in alignment with the coastline. This map is for illustrative purposes only and does not reflect all policies. Site-specific studies are required to draw parcel-specific conclusions.



Data Source: Sonoma County PRMD GIS

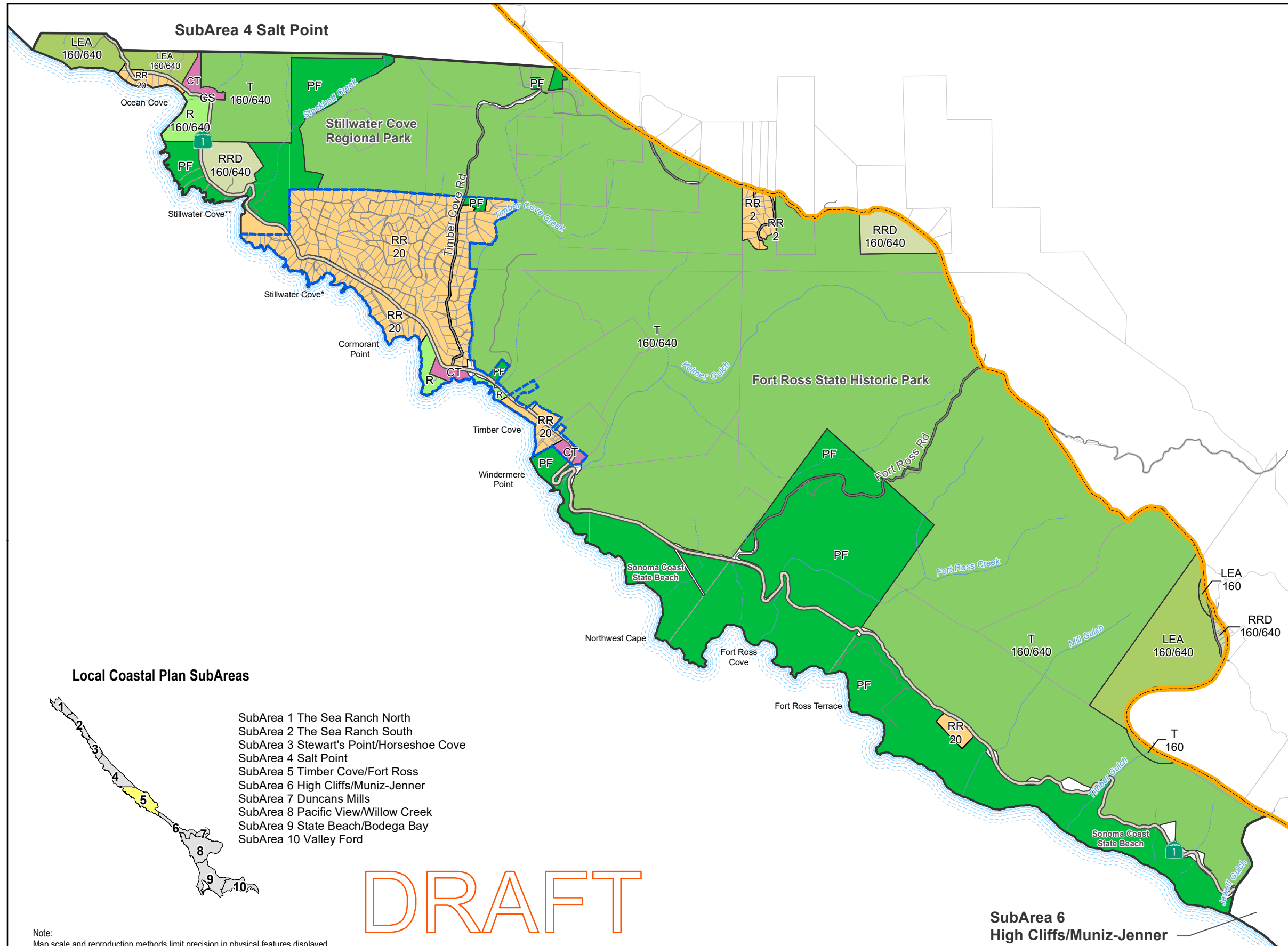
Author: PRMD Cartography: J. Samuels File Number: S:\GIS-DATA\PRMD_BASE\PRMD Department Projects\Comprehensive Planning\Local Coastal Plan\Map mxd\Public Review Draft\Figure C-LU-1d_PR.mxd Date: 6/3/2019

Permit and Resource Management Department
2550 Ventura Avenue, Santa Rosa, California 95403
707-565-1900 FAX 707-565-1103



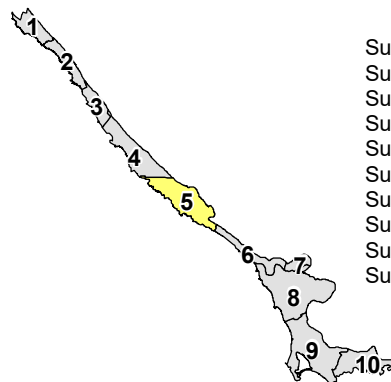
**SubArea 5
Timber Cove/Fort Ross**

Sonoma County Local Coastal Plan Land Use



- Land Use Types**
- Rural Residential
 - Commercial Tourist
 - Resources and Rural Development
 - Land Extensive Agriculture
 - Timber
 - Recreation
 - Public Facilities
- Base Map Layers**
- Coastal SubArea
 - Rural Community
 - Parcel
 - Coastal Zone Boundary
 - Highway
 - Road
 - Perennial Stream
 - Intermittent Stream

Local Coastal Plan SubAreas



- SubArea 1 The Sea Ranch North
- SubArea 2 The Sea Ranch South
- SubArea 3 Stewart's Point/Horseshoe Cove
- SubArea 4 Salt Point
- SubArea 5 Timber Cove/Fort Ross
- SubArea 6 High Cliffs/Muniz-Jenner
- SubArea 7 Duncans Mills
- SubArea 8 Pacific View/Willow Creek
- SubArea 9 State Beach/Bodega Bay
- SubArea 10 Valley Ford

DRAFT



Note:
Map scale and reproduction methods limit precision in physical features displayed. The parcels contained herein are not intended to represent surveyed data. In some areas the County's parcel base is not in alignment with the coastline. This map is for illustrative purposes only and does not reflect all policies. Site-specific studies are required to draw parcel-specific conclusions.

Stillwater Cove* = location according to County of Sonoma
Stillwater Cove** = location according to U.S. Geological Survey Map

Data Source: Sonoma County PRMD GIS

Author: PRMD Cartography: J. Samuels File Number: S:\GIS-DATA\PRMD_BASE\PRMD Department Projects\Comprehensive Planning\Local Coastal Plan\Map mxds\Public Review Draft\Figure C-LU-1e_PR.mxd Date: 6/3/2019

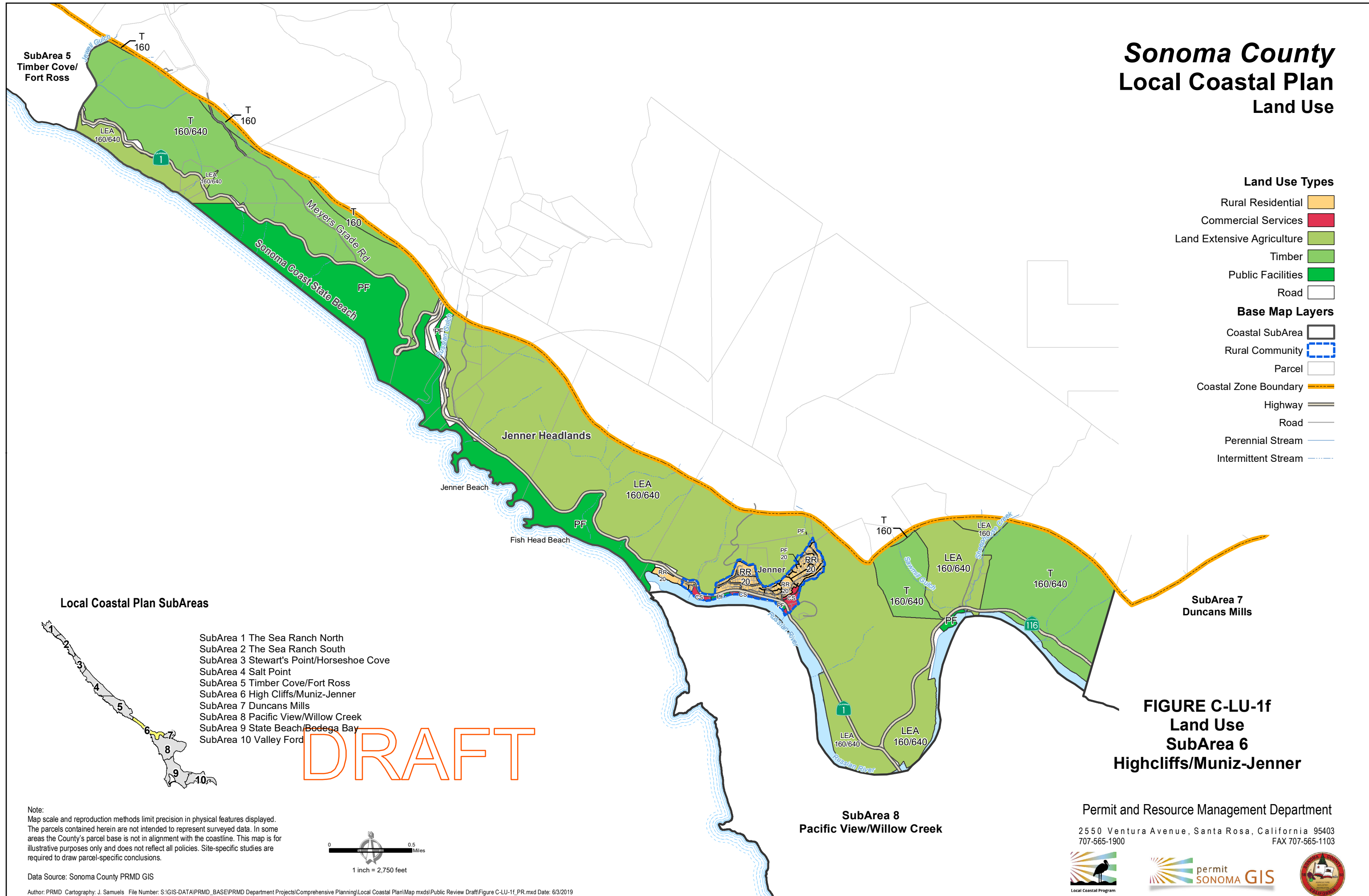
**FIGURE C-LU-1e
Land Use
SubArea 5
Timber Cove/Fort Ross**

Permit and Resource Management Department

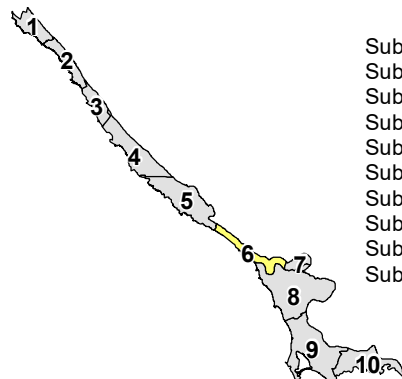
2550 Ventura Avenue, Santa Rosa, California 95403
707-565-1900 FAX 707-565-1103



Sonoma County Local Coastal Plan Land Use



Local Coastal Plan SubAreas



- SubArea 1 The Sea Ranch North
- SubArea 2 The Sea Ranch South
- SubArea 3 Stewart's Point/Horseshoe Cove
- SubArea 4 Salt Point
- SubArea 5 Timber Cove/Fort Ross
- SubArea 6 High Cliffs/Muniz-Jenner
- SubArea 7 Duncans Mills
- SubArea 8 Pacific View/Willow Creek
- SubArea 9 State Beach/Bodega Bay
- SubArea 10 Valley Ford

DRAFT

Note:
Map scale and reproduction methods limit precision in physical features displayed.
The parcels contained herein are not intended to represent surveyed data. In some areas the County's parcel base is not in alignment with the coastline. This map is for illustrative purposes only and does not reflect all policies. Site-specific studies are required to draw parcel-specific conclusions.



Data Source: Sonoma County PRMD GIS

Author: PRMD Cartography: J. Samuels File Number: S:\GIS-DATA\PRMD_BASE\PRMD Department Projects\Comprehensive Planning\Local Coastal Plan\Map mxds\Public Review Draft\Figure C-LU-1f_PR.mxd Date: 6/3/2019

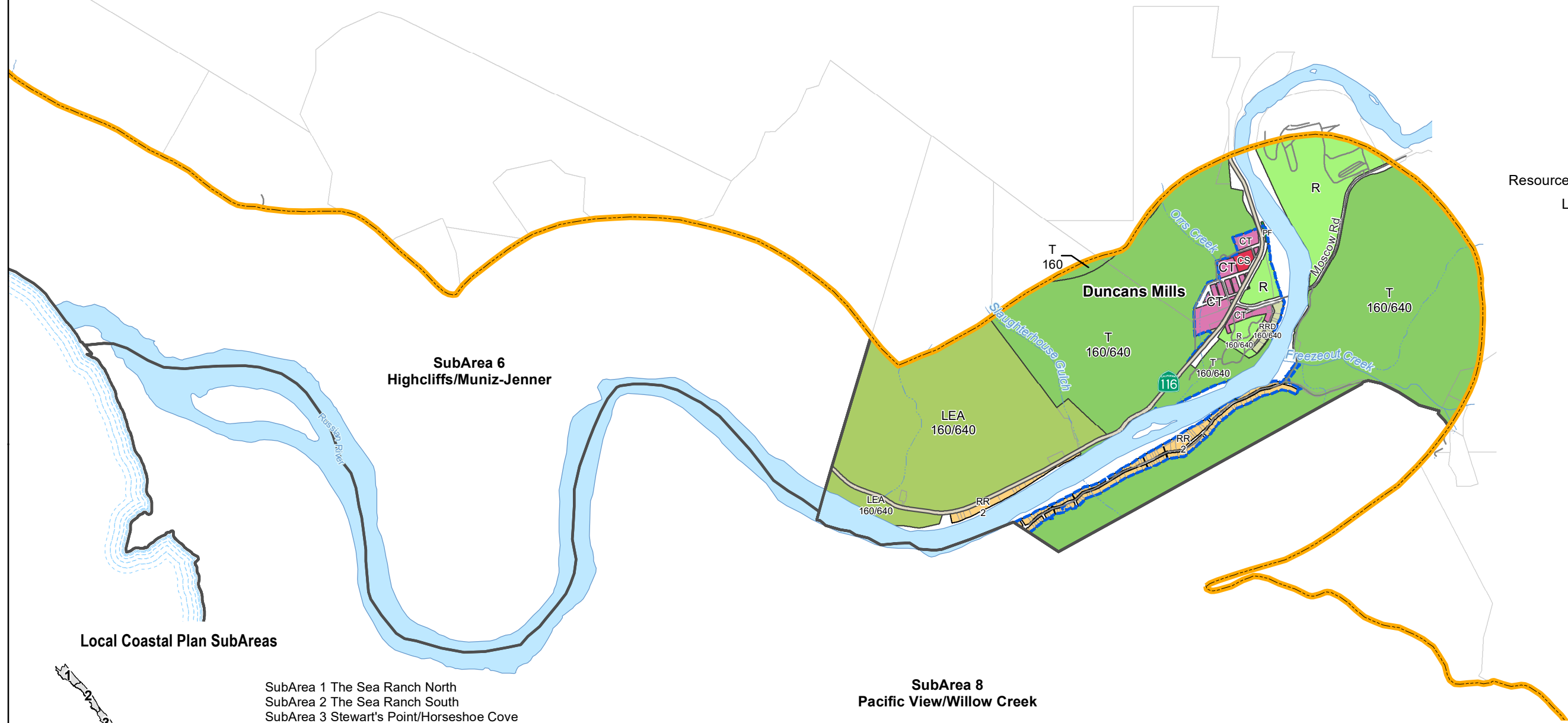
**FIGURE C-LU-1f
Land Use
SubArea 6
Highcliffs/Muniz-Jenner**

Permit and Resource Management Department

2550 Ventura Avenue, Santa Rosa, California 95403
707-565-1900 FAX 707-565-1103

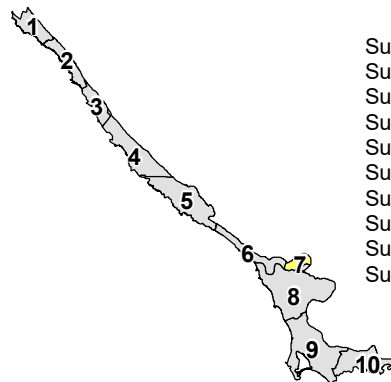


Sonoma County Local Coastal Plan Land Use



- Land Use Types**
- Rural Residential
 - Commercial Services
 - Commercial Tourist
 - Resources and Rural Development
 - Land Extensive Agriculture
 - Timber
 - Recreation
 - Public Facilities
 - Road
- Base Map Layers**
- Coastal SubArea
 - Rural Community
 - Parcel
 - Coastal Zone Boundary
 - Highway
 - Road
 - Perennial Stream
 - Intermittent Stream

Local Coastal Plan SubAreas



- SubArea 1 The Sea Ranch North
- SubArea 2 The Sea Ranch South
- SubArea 3 Stewart's Point/Horseshoe Cove
- SubArea 4 Salt Point
- SubArea 5 Timber Cove/Fort Ross
- SubArea 6 High Cliffs/Muniz-Jenner
- SubArea 7 Duncans Mills
- SubArea 8 Pacific View/Willow Creek
- SubArea 9 State Beach/Bodega Bay
- SubArea 10 Valley Ford

DRAFT

**SubArea 8
Pacific View/Willow Creek**

**FIGURE C-LU-1g
Land Use
SubArea 7
Duncans Mills**

Note:
Map scale and reproduction methods limit precision in physical features displayed.
The parcels contained herein are not intended to represent surveyed data. In some areas the County's parcel base is not in alignment with the coastline. This map is for illustrative purposes only and does not reflect all policies. Site-specific studies are required to draw parcel-specific conclusions.



Data Source: Sonoma County PRMD GIS

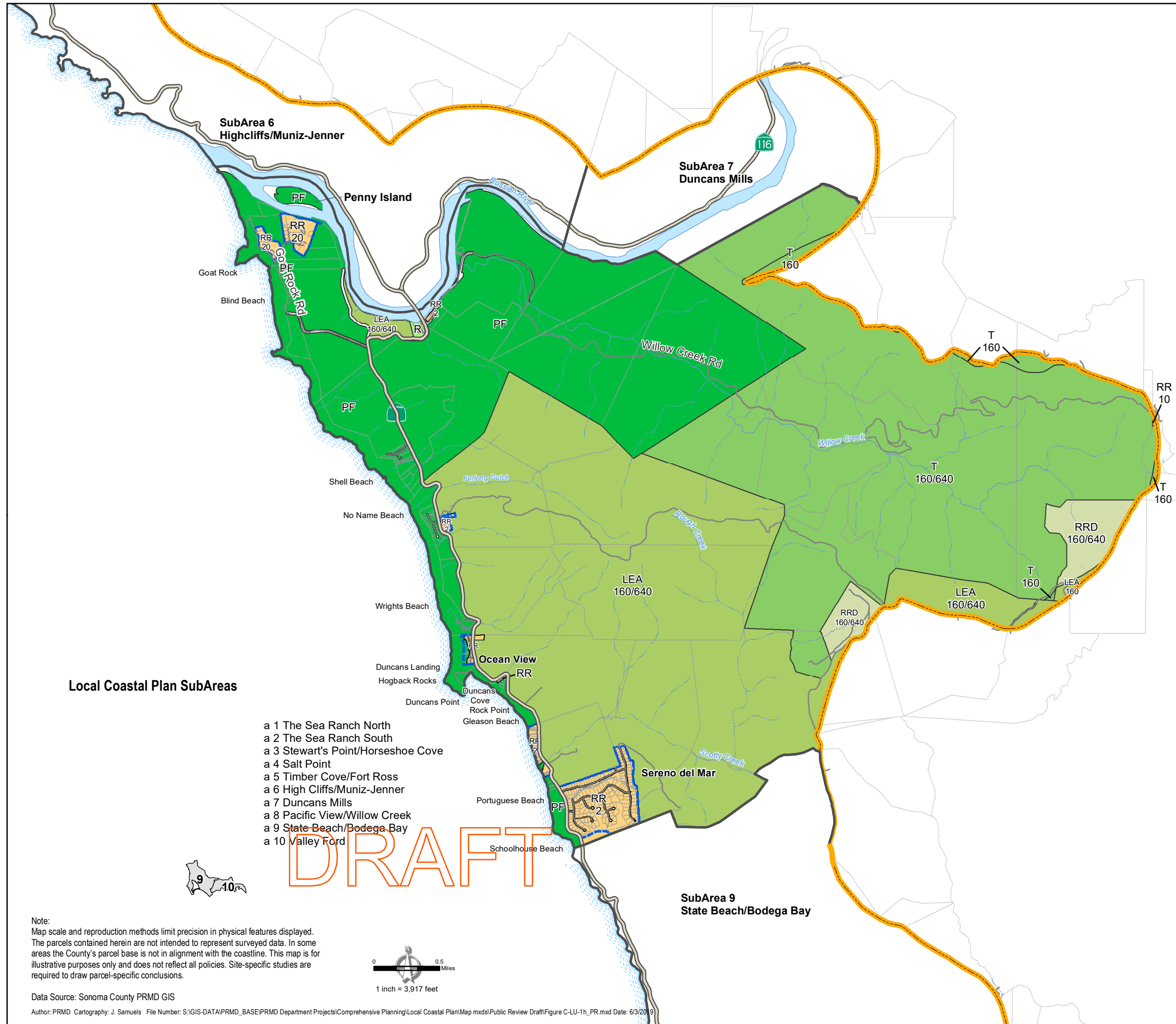
Author: PRMD Cartography: J. Samuels File Number: S:\GIS-DATA\PRMD_BASE\PRMD Department Projects\Comprehensive Planning\Local Coastal Plan\Map mxd\Public Review Draft\Figure C-LU-1g_PR.mxd Date: 6/3/2019

Permit and Resource Management Department

2550 Ventura Avenue, Santa Rosa, California 95403
707-565-1900 FAX 707-565-1103



Sonoma County Local Coastal Plan Land Use

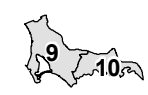


- Land Use Types**
- Rural Residential
 - Commercial Tourist
 - Resources and Rural Development
 - Land Extensive Agriculture
 - Timber
 - Recreation
 - Public Facilities
- Base Map Layers**
- Coastal SubArea
 - Rural Community
 - Parcel
 - Coastal Zone Boundary
 - Highway
 - Road
 - Perennial Stream
 - Intermittent Stream

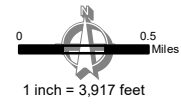
Local Coastal Plan SubAreas

- a 1 The Sea Ranch North
- a 2 The Sea Ranch South
- a 3 Stewart's Point/Horseshoe Cove
- a 4 Salt Point
- a 5 Timber Cove/Fort Ross
- a 6 High Cliffs/Muniz-Jenner
- a 7 Duncans Mills
- a 8 Pacific View/Willow Creek
- a 9 State Beach/Bodega Bay
- a 10 Valley Ford

DRAFT



Note:
Map scale and reproduction methods limit precision in physical features displayed.
The parcels contained herein are not intended to represent surveyed data. In some areas the County's parcel base is not in alignment with the coastline. This map is for illustrative purposes only and does not reflect all policies. Site-specific studies are required to draw parcel-specific conclusions.



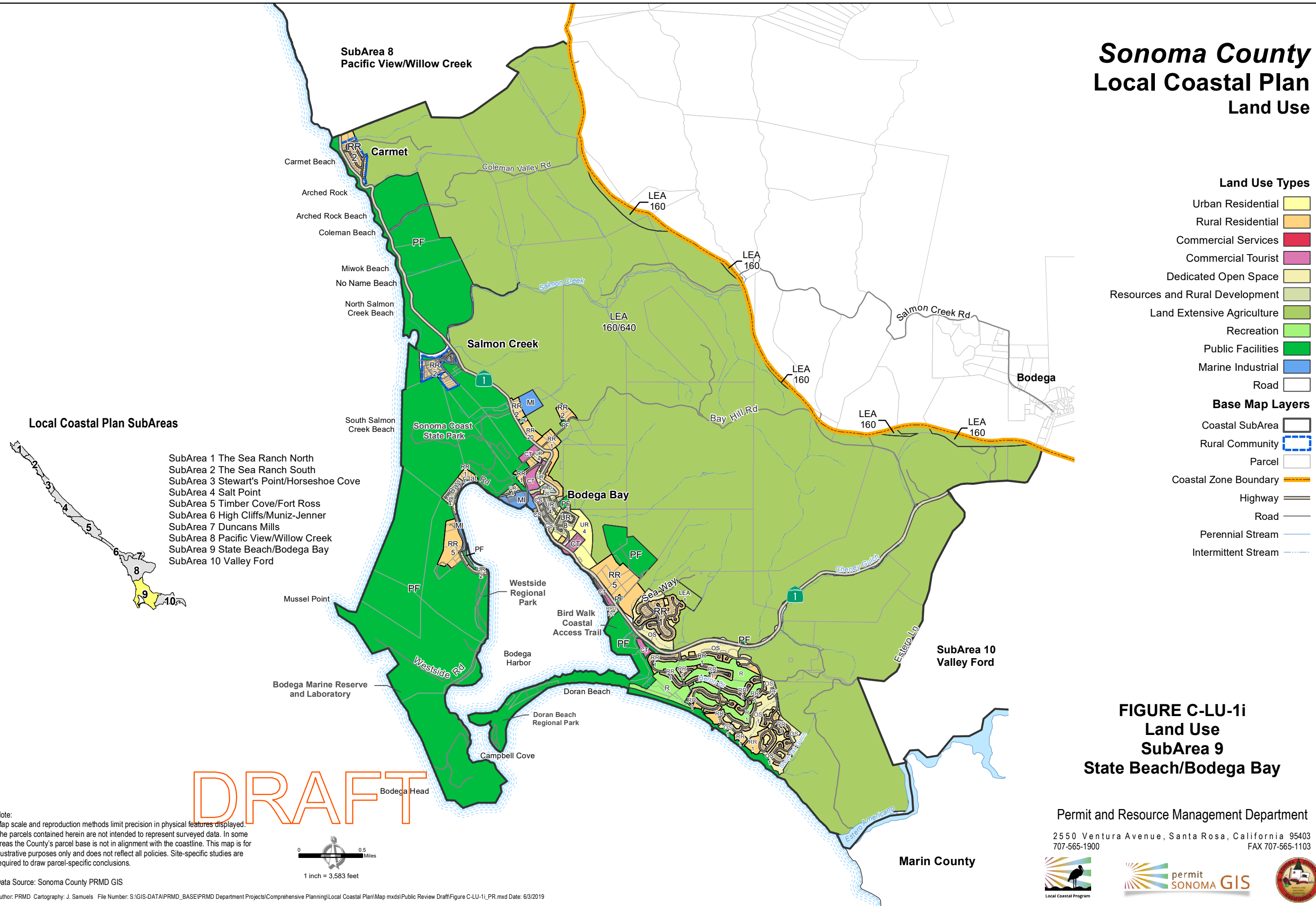
**FIGURE C-LU-1h
Land Use**

Pacific View/Willow Creek

Permit and Resource Management Department
2550 Ventura Avenue, Santa Rosa, California 95403
707-565-1900 FAX 707-565-1103



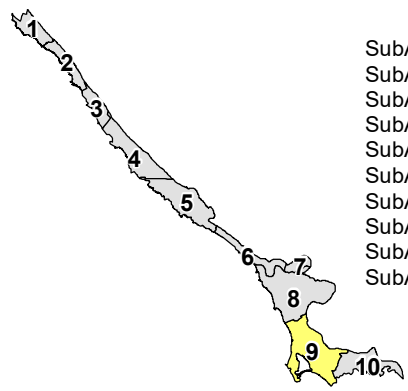
Sonoma County Local Coastal Plan Land Use



- Land Use Types**
- Urban Residential
 - Rural Residential
 - Commercial Services
 - Commercial Tourist
 - Dedicated Open Space
 - Resources and Rural Development
 - Land Extensive Agriculture
 - Recreation
 - Public Facilities
 - Marine Industrial
 - Road
- Base Map Layers**
- Coastal SubArea
 - Rural Community
 - Parcel
 - Coastal Zone Boundary
 - Highway
 - Road
 - Perennial Stream
 - Intermittent Stream

Local Coastal Plan SubAreas

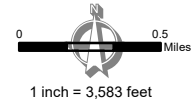
- SubArea 1 The Sea Ranch North
- SubArea 2 The Sea Ranch South
- SubArea 3 Stewart's Point/Horseshoe Cove
- SubArea 4 Salt Point
- SubArea 5 Timber Cove/Fort Ross
- SubArea 6 High Cliffs/Muniz-Jenner
- SubArea 7 Duncans Mills
- SubArea 8 Pacific View/Willow Creek
- SubArea 9 State Beach/Bodega Bay
- SubArea 10 Valley Ford



**FIGURE C-LU-1i
Land Use
SubArea 9
State Beach/Bodega Bay**

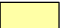
















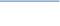
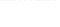
Note:
Map scale and reproduction methods limit precision in physical features displayed.
The parcels contained herein are not intended to represent surveyed data. In some areas the County's parcel base is not in alignment with the coastline. This map is for illustrative purposes only and does not reflect all policies. Site-specific studies are required to draw parcel-specific conclusions.

DRAFT



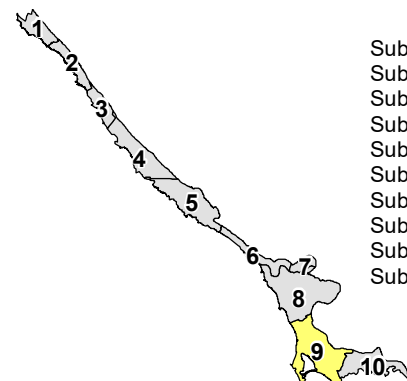
Marin County

Sonoma County Local Coastal Plan Land Use

- Land Use Types**
- Urban Residential 
 - Rural Residential 
 - Commercial Services 
 - Commercial Tourist 
 - Dedicated Open Space 
 - Resources and Rural Development 
 - Land Extensive Agriculture 
 - Recreation 
 - Public Facilities 
 - Marine Industrial 
 - Road 
- Base Map Layers**
- Coastal SubArea 
 - Rural Community 
 - Parcel 
 - Coastal Zone Boundary 
 - Highway 
 - Road 
 - Perennial Stream 
 - Intermittent Stream 

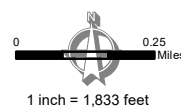
Local Coastal Plan SubAreas

- SubArea 1 The Sea Ranch North
- SubArea 2 The Sea Ranch South
- SubArea 3 Stewart's Point/Horseshoe Cove
- SubArea 4 Salt Point
- SubArea 5 Timber Cove/Fort Ross
- SubArea 6 High Cliffs/Muniz-Jenner
- SubArea 7 Duncans Mills
- SubArea 8 Pacific View/Willow Creek
- SubArea 9 State Beach/Bodega Bay
- SubArea 10 Valley Ford



DRAFT

Note:
Map scale and reproduction methods limit precision in physical features displayed.
The parcels contained herein are not intended to represent surveyed data. In some areas the County's parcel base is not in alignment with the coastline. This map is for illustrative purposes only and does not reflect all policies. Site-specific studies are required to draw parcel-specific conclusions.



Data Source: Sonoma County PRMD GIS

Author: PRMD Cartography: J. Samuels File Number: S:\GIS-DATA\PRMD_BASE\PRMD Department Projects\Comprehensive Planning\Local Coastal Plan\Map mxd\Public Review Draft\Figure C-LU-1j_PR.mxd Date: 6/3/2019

**FIGURE C-LU-1j
Land Use
SubArea 9
Bodega Bay Vicinity**

Permit and Resource Management Department

2550 Ventura Avenue, Santa Rosa, California 95403
707-565-1900 FAX 707-565-1103



Sonoma County Local Coastal Plan Land Use

Local Coastal Plan SubAreas



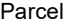

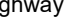
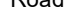
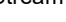

- SubArea 1 The Sea Ranch North
- SubArea 2 The Sea Ranch South
- SubArea 3 Stewart's Point/Horseshoe Cove
- SubArea 4 Salt Point
- SubArea 5 Timber Cove/Fort Ross
- SubArea 6 High Cliffs/Muniz-Jenner
- SubArea 7 Duncans Mills
- SubArea 8 Pacific View/Willow Creek
- SubArea 9 State Beach/Bodega Bay
- SubArea 10 Valley Ford

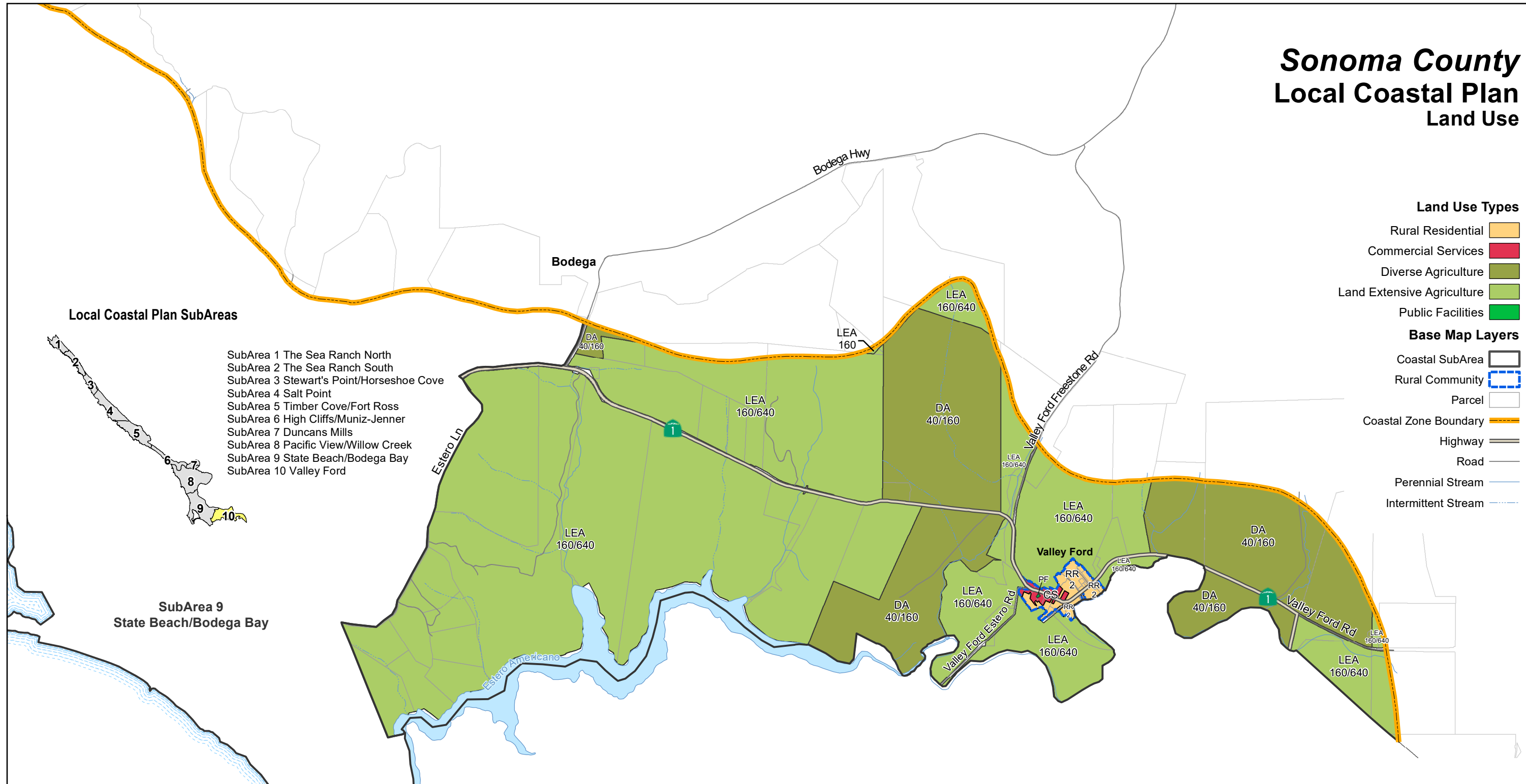
SubArea 9 State Beach/Bodega Bay

Land Use Types

- Rural Residential 
- Commercial Services 
- Diverse Agriculture 
- Land Extensive Agriculture 
- Public Facilities 

Base Map Layers

- Coastal SubArea 
- Rural Community 
- Parcel 
- Coastal Zone Boundary 
- Highway 
- Road 
- Perennial Stream 
- Intermittent Stream 



Marin County

**FIGURE C-LU-1k
Land Use
SubArea 10
Valley Ford**

DRAFT

Note:
Map scale and reproduction methods limit precision in physical features displayed.
The parcels contained herein are not intended to represent surveyed data. In some areas the County's parcel base is not in alignment with the coastline. This map is for illustrative purposes only and does not reflect all policies. Site-specific studies are required to draw parcel-specific conclusions.



Data Source: Sonoma County PRMD GIS

Author: PRMD Cartography, J. Samuels File Number: S:\GIS-DATA\PRMD_BASE\PRMD Department Projects\Comprehensive Planning\Local Coastal Plan\Map mxd\Public Review Draft\Figure C-LU-1k_PR.mxd Date: 6/3/2019

Permit and Resource Management Department

2550 Ventura Avenue, Santa Rosa, California 95403
707-565-1900 FAX 707-565-1103

