

1

Right-Of-Way Vacation for A Portion Of Old Maple Avenue; RWV21-0003

Sonoma County

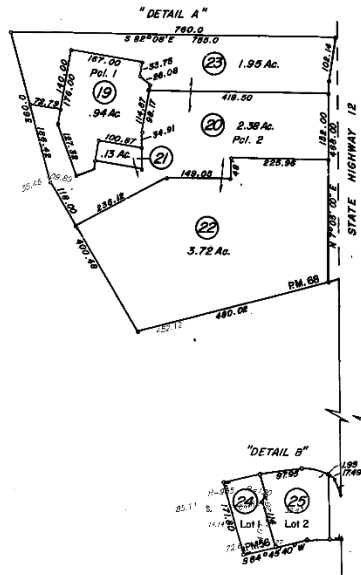


Assessor Parcel Map

COUNTY ASSESSOR'S PARCEL MAP

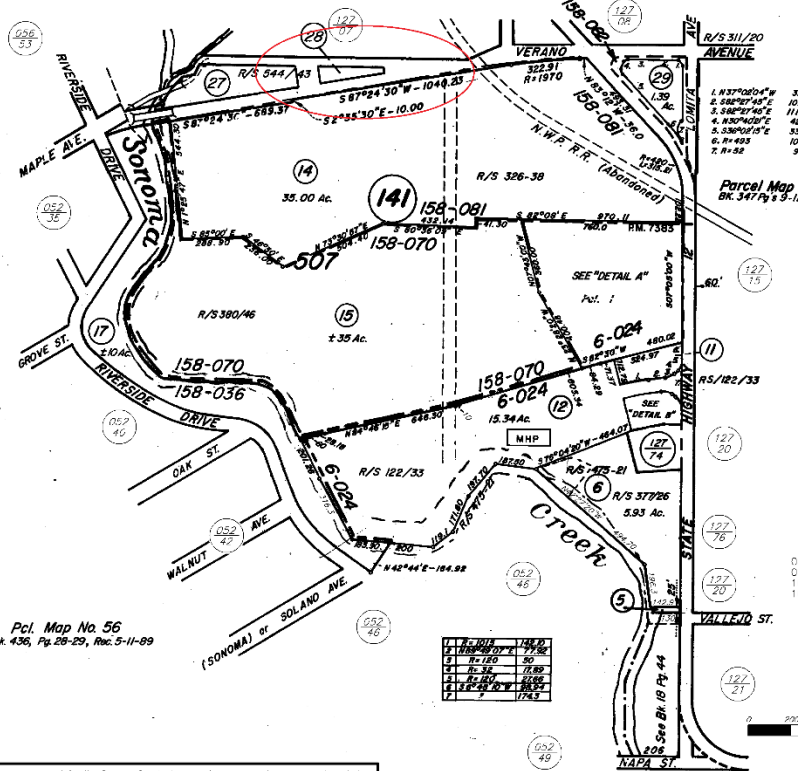
127-14

Parcel Map No. 68
Rec. 5-17-90, Bk. 456, Pgs. 36-37



Parcel Map No. 56
Bk. 436, Pgs. 28-29, Rec. 5-11-89

NOTE: This map was prepared for the Sonoma County Assessor for assessment purposes only and does not indicate parcel legality or valid building sites. To verify legal parcel status check with your city or county development or planning division. No liability is assumed for the accuracy of the data collected.



TAX RATE AREA
 158-070
 158-081
 158-082
 006-024

Parcel Map 7383
Bk. 347 Pgs 9-11, Rec. 06/30/98

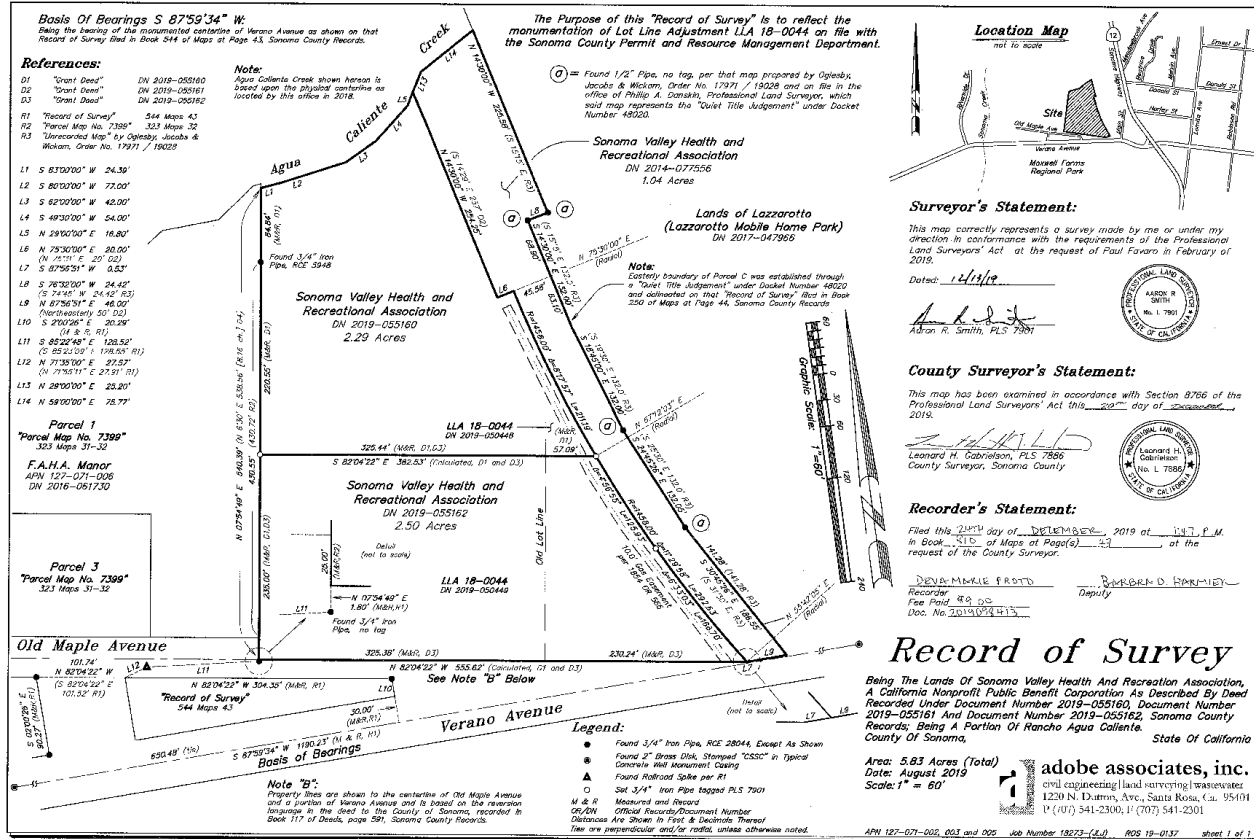
SCALE: 1"=400'

REVISED
 09-10-02=PR RF
 05-18-95=29 KT
 10-28-01= 3 KB
 10-25-06=Adj. PG KB

1	158-070	158-070
2	158-081	158-081
3	158-082	158-082
4	006-024	006-024
5	158-070	158-070
6	158-070	158-070
7	158-070	158-070
8	158-070	158-070
9	158-070	158-070
10	158-070	158-070
11	158-070	158-070
12	158-070	158-070
13	158-070	158-070
14	158-070	158-070
15	158-070	158-070
16	158-070	158-070
17	158-070	158-070
18	158-070	158-070
19	158-070	158-070
20	158-070	158-070
21	158-070	158-070
22	158-070	158-070
23	158-070	158-070
24	158-070	158-070
25	158-070	158-070
26	158-070	158-070
27	158-070	158-070
28	158-070	158-070
29	158-070	158-070
30	158-070	158-070
31	158-070	158-070
32	158-070	158-070
33	158-070	158-070
34	158-070	158-070
35	158-070	158-070
36	158-070	158-070
37	158-070	158-070
38	158-070	158-070
39	158-070	158-070
40	158-070	158-070
41	158-070	158-070
42	158-070	158-070
43	158-070	158-070
44	158-070	158-070
45	158-070	158-070
46	158-070	158-070
47	158-070	158-070
48	158-070	158-070
49	158-070	158-070
50	158-070	158-070
51	158-070	158-070
52	158-070	158-070
53	158-070	158-070
54	158-070	158-070
55	158-070	158-070
56	158-070	158-070
57	158-070	158-070
58	158-070	158-070
59	158-070	158-070
60	158-070	158-070
61	158-070	158-070
62	158-070	158-070
63	158-070	158-070
64	158-070	158-070
65	158-070	158-070
66	158-070	158-070
67	158-070	158-070
68	158-070	158-070
69	158-070	158-070
70	158-070	158-070
71	158-070	158-070
72	158-070	158-070
73	158-070	158-070
74	158-070	158-070
75	158-070	158-070
76	158-070	158-070
77	158-070	158-070
78	158-070	158-070
79	158-070	158-070
80	158-070	158-070
81	158-070	158-070
82	158-070	158-070
83	158-070	158-070
84	158-070	158-070
85	158-070	158-070
86	158-070	158-070
87	158-070	158-070
88	158-070	158-070
89	158-070	158-070
90	158-070	158-070
91	158-070	158-070
92	158-070	158-070
93	158-070	158-070
94	158-070	158-070
95	158-070	158-070
96	158-070	158-070
97	158-070	158-070
98	158-070	158-070
99	158-070	158-070
100	158-070	158-070

Assessor's Map Bk. 127, Pg. 14
 Sonoma County, Calif. (1/010)

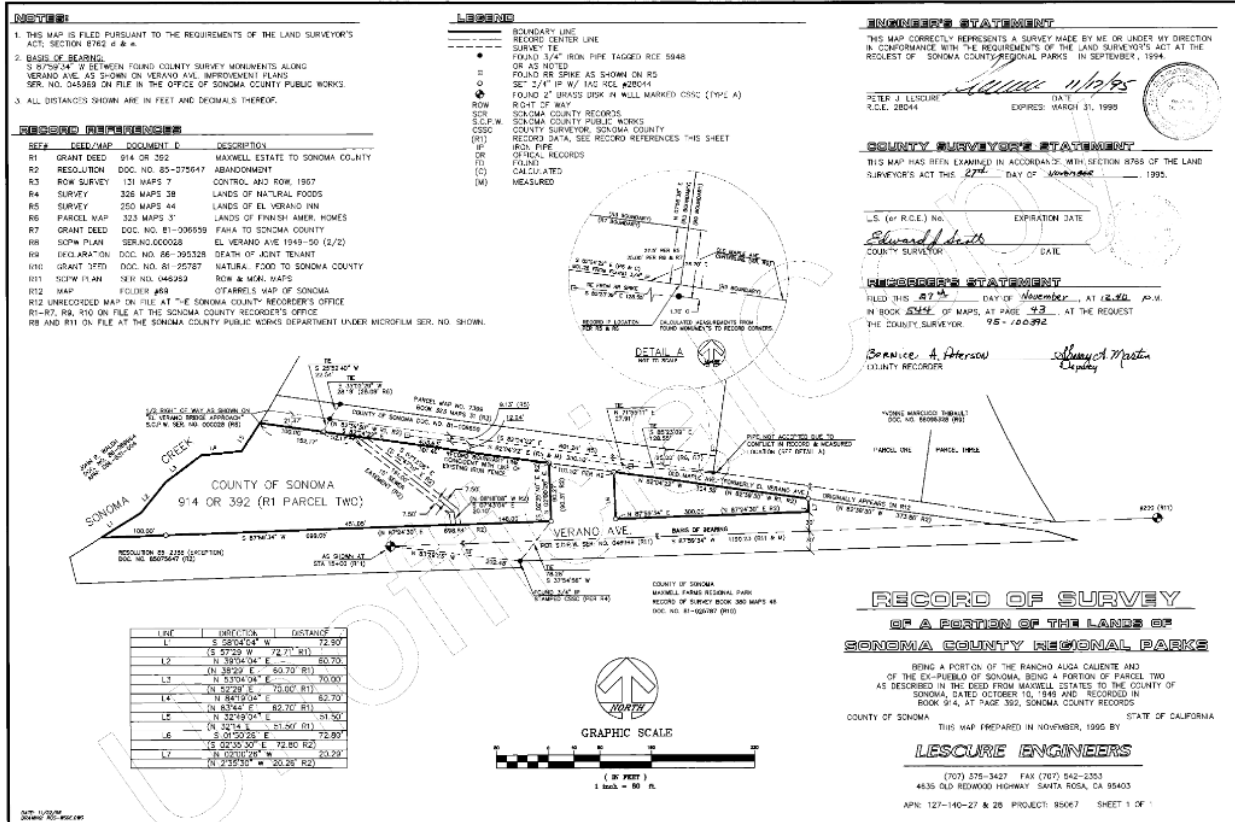
Record of Survey



Record of Survey

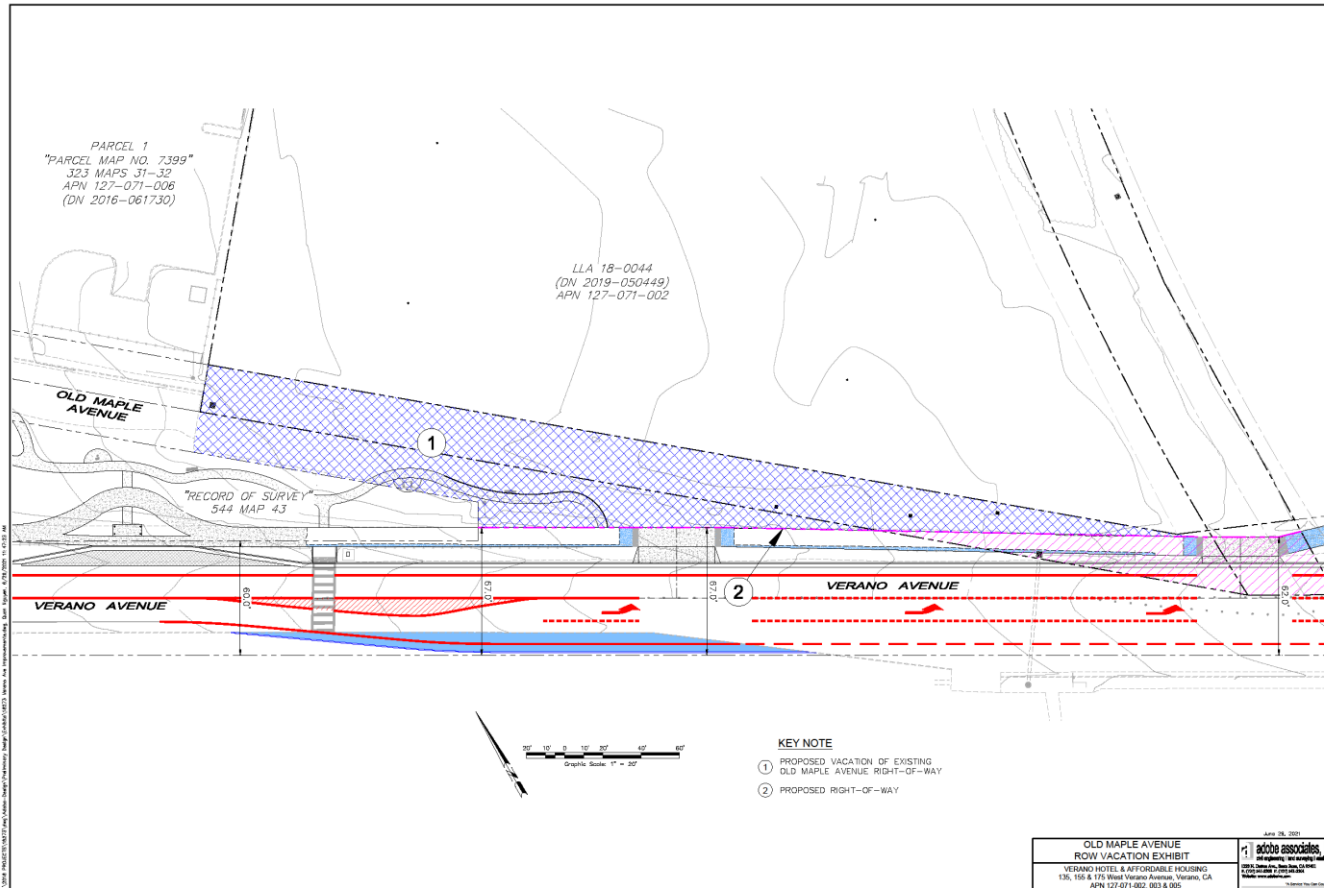
544

43



Area of abandonment

5



Current access to Old Maple Avenue

6



Looking east along abandonment

7



Informal access at Verano Avenue

8



9

Questions?

