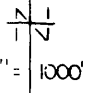


COUNTY ASSESSOR'S PARCEL MAP

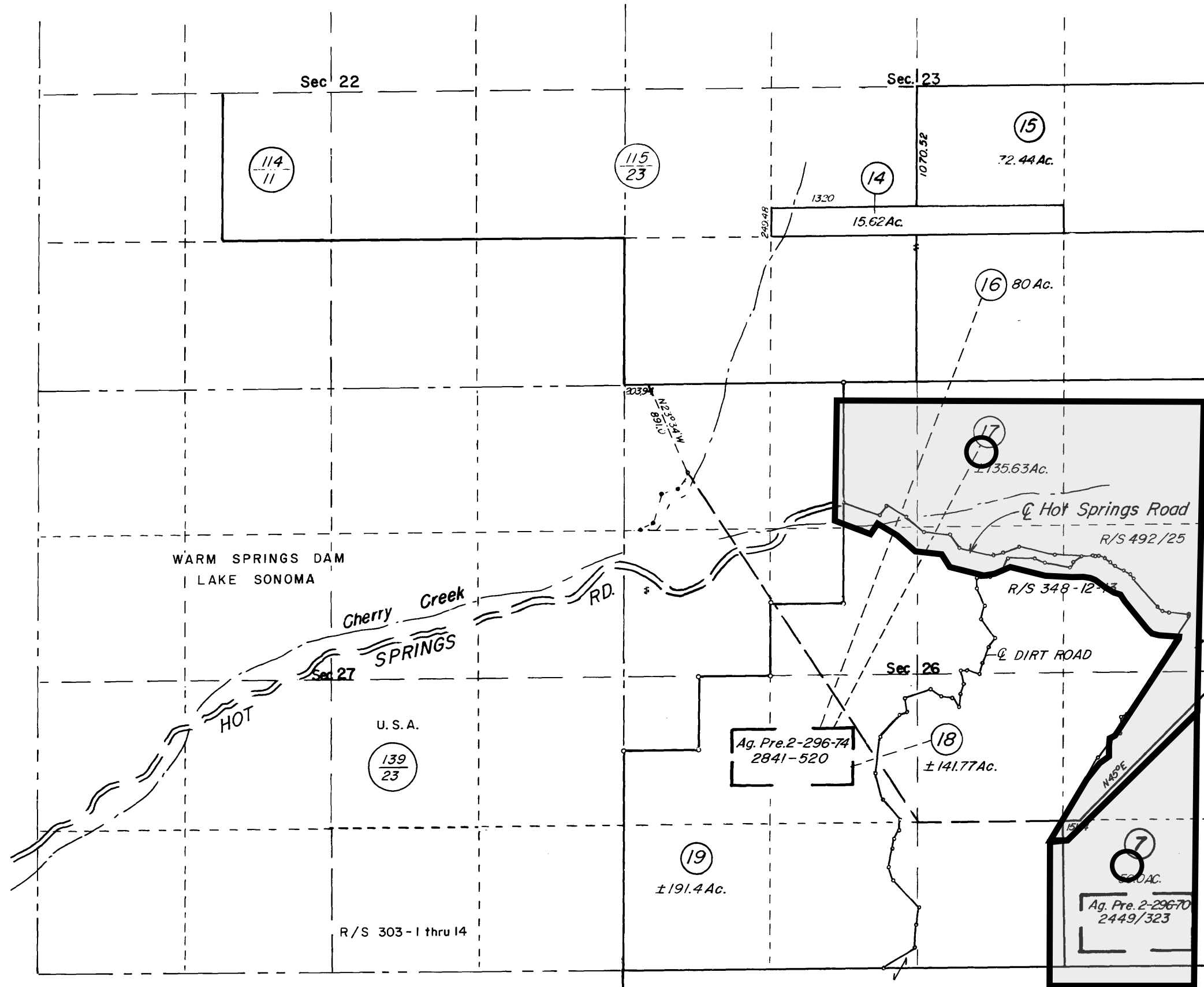
TAX RATE AREA
87-010

139-01

REVISED	
12-4-73	=
1-14-74	=
2-28-77	= 15
11-20-81	=
4-25-83	=
4-16-92	= 19 LSL



1" = 1000'



139/23

115/23

115/25

139/23

139/02

NOTE: THIS MAP WAS PREPARED FOR ASSESSMENT PURPOSES ONLY. NO LIABILITY IS ASSUMED FOR THE ACCURACY OF THE DATA DELINEATED HEREON.

Assessor's Map Bk. 139 pg. 01
Sonoma County, Calif.

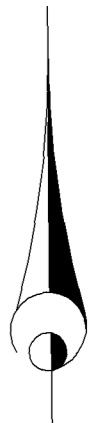
COUNTY ASSESSOR'S PARCEL MAP

TAX RATE AREA
65-009

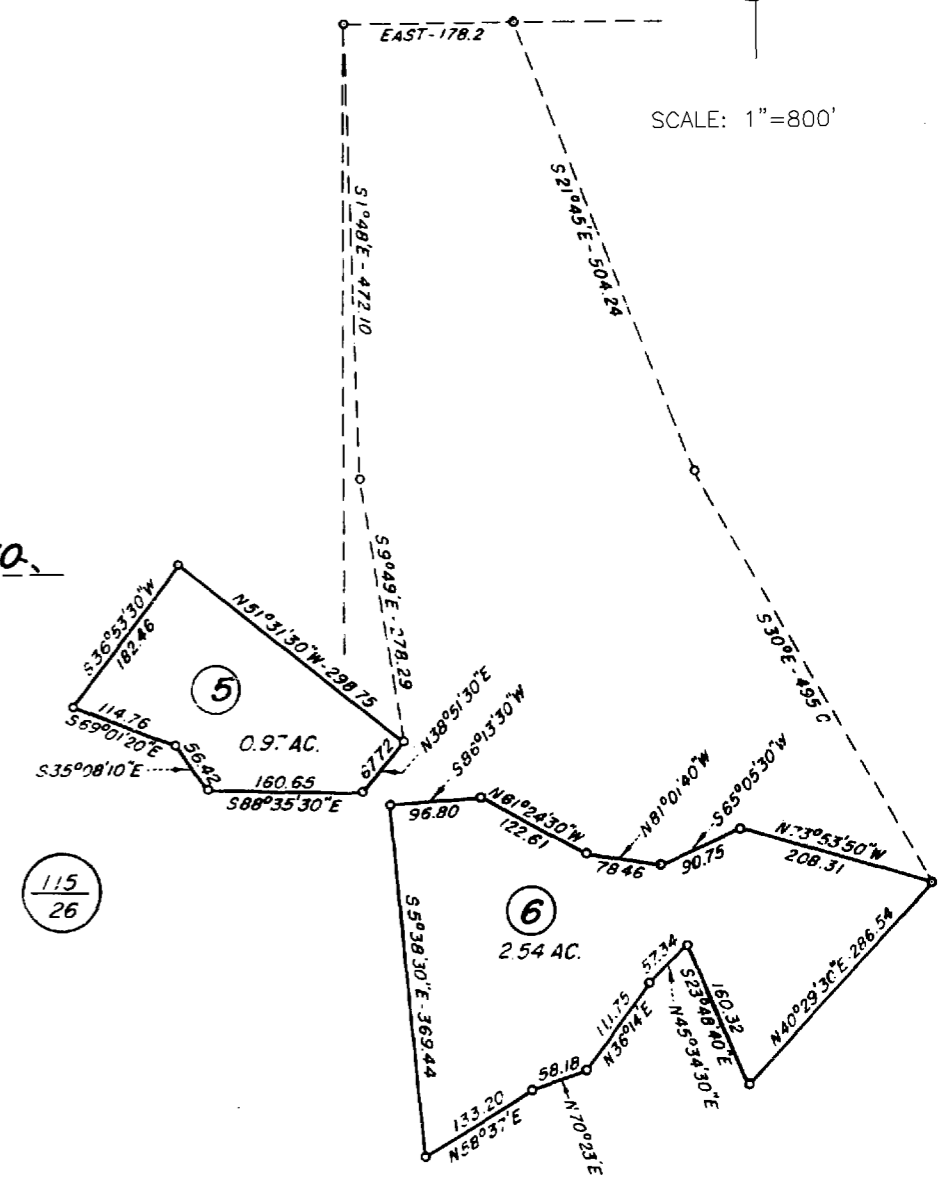
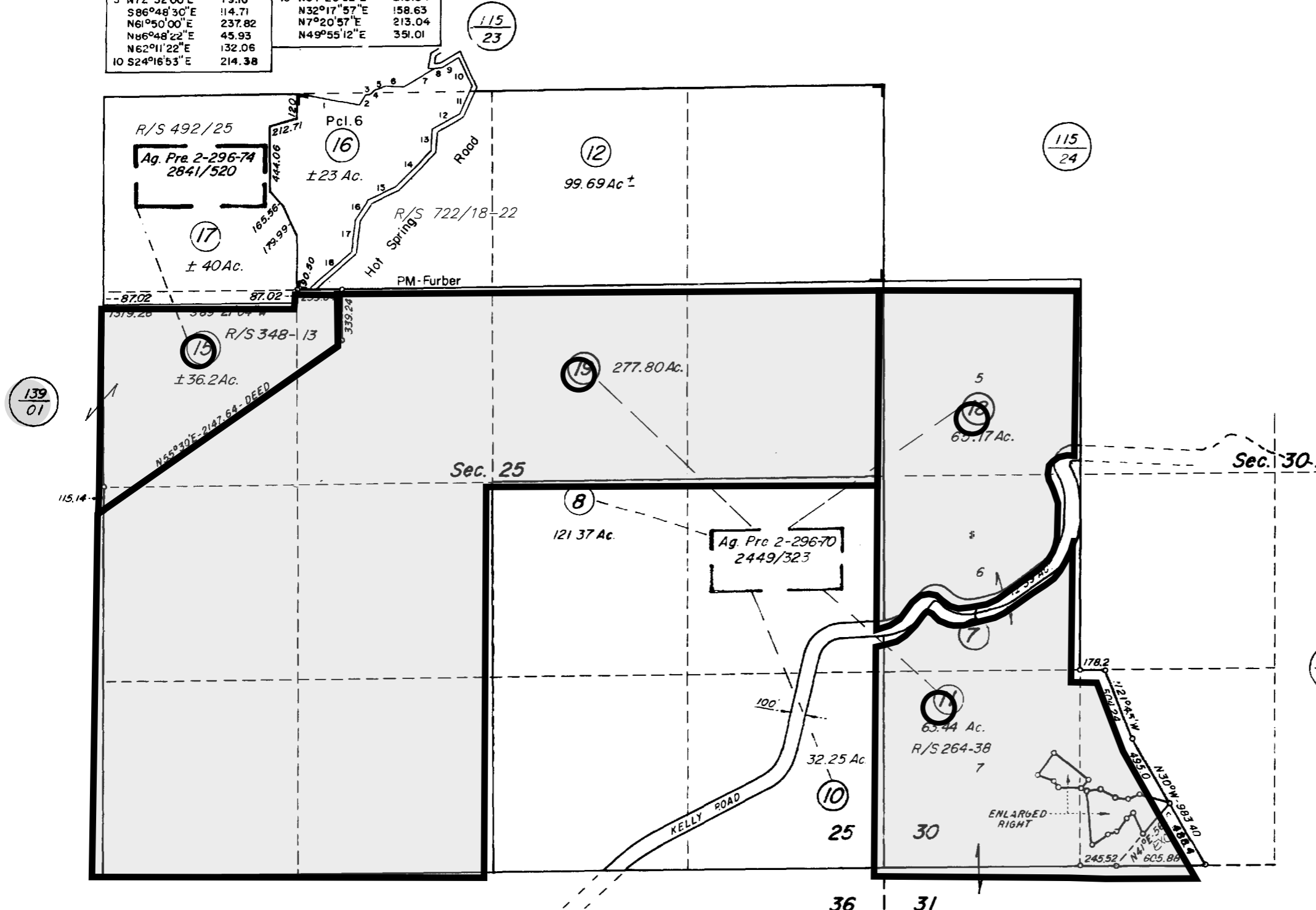
115-25

1	S81°24'15"E	423.31	N23°02'07"E	201.14	
	N24°57'30"E	75.06	N60°42'37"E	222.58	
	N81°57'30"E	37.12	N2°55'37"E	148.41	
	N39°52'00"E	40.97	N44°42'37"E	330.89	
5	N72°32'00"E	79.16	15	N64°26'52"E	215.54
	S86°48'30"E	114.71		N32°17'57"E	158.63
	N61°50'00"E	237.82		N7°20'57"E	213.04
	N86°48'22"E	45.93		N49°55'12"E	351.01
	N62°11'22"E	132.06			
10	S24°16'53"E	214.38			

REVISED
04-16-92=16 LSL
04-01-93=17 Cor LSL
10-15-01=19 KT
04-07-09=R/S RL



SCALE: 1"=800'



Furber Parcel Map
Bk. 166 Pg. 32 Rec. 1-21-72

NOTE: This map was prepared for Assessment purposes only and does not indicate either parcel legality or a valid building site. No liability is assumed for the accuracy of the data delineated. The acreages are based on the information supplied to the Assessor (i.e. recorded survey maps, recorded deeds, prior assessment maps, etc.)

NOTE: Assessor's parcels do not necessarily constitute legal lots. To verify legal parcel status, check with the appropriate city or county community development or planning division.

T.I.I.N.R.I.I.W.
T.I.I.N.R.I.O.W.

Assessor's Map Bk. 115, Pg. 25
Sonoma County, Calif. (ACAD)

HYBRID 4/7/09 RL