

SONOMA COUNTY

DIST.	COUNTY	ROUTE	TOTAL MAPPING AREA	
			POST MILE	KILOMETER POST
04	SON	101	25.6	41.2-43.3

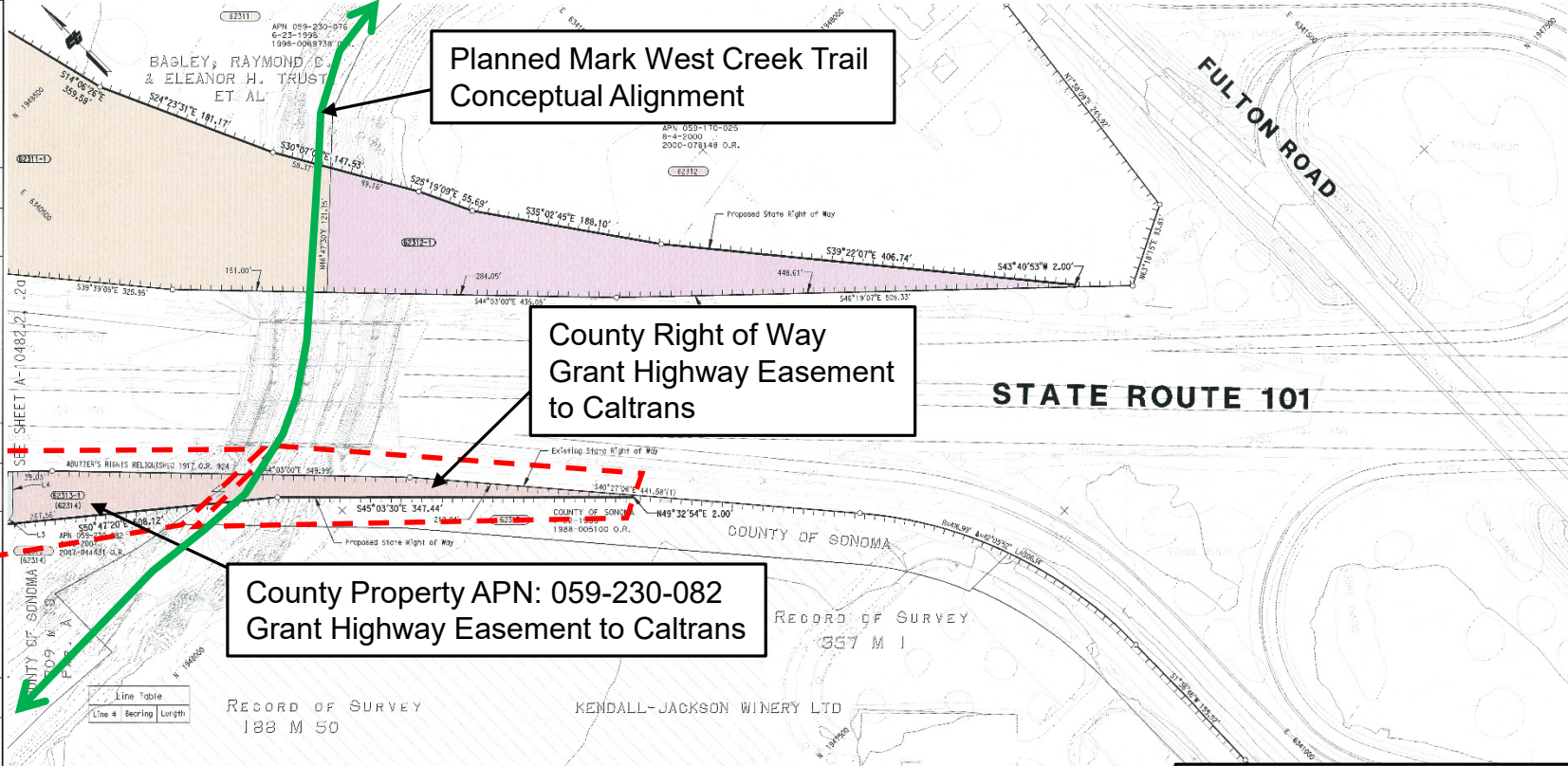
DISTANCES SHOWN ARE ON THE CALIFORNIA COORDINATE SYSTEM OF 1983, ZONE 10. MULTIPLE DISTANCES SHOWN BY 1:0000375 TO OBTAIN GROUND LEVEL DISTANCES.

Planned Mark West Creek Trail Conceptual Alignment

County Right of Way Grant Highway Easement to Caltrans

County Property APN: 059-230-082 Grant Highway Easement to Caltrans

Airport Interchange Project Easement Location Map
 Not to Scale
 Date: 3-27-2020



NOTE: ALL THE TOTAL OWNERSHIP AREA FIGURES ARE OBTAINED FROM LANDVISION

PARCEL #S	ACR. CODE	GRANTOR	AREAS (square feet) (±acres)			REMARKS	RECORDATION			
			TOTAL	S/W	REM. EXCESS		INST.	DATE	DOCUMENT REF.	FA
62311-1	F	BAGLEY, Raymond C. & ELEANOR H. TRUST, et al	290,545	121,637	168,908	Including 78412 Existing Easement, 2006-192549	X	02/06/2009	X	362301
62312-1	F	5185 Fu Tan Road, LLC	282,464	57,963	244,496		X	03/20/2009	X	362301
021151-10194	F	County of Sonoma	5,37AC	14,679	5,25AC		X	03/26/2009	X	362301

LEGEND

- DIMENSION POINT
- ACCESS PROHIBITED
- COMMON OWNERSHIP
- O.R. OFFICIAL RECORDS
- (T) TOTAL
- APN ASSESSOR'S PARCEL NUMBER

Supplementary information may be obtained from the District Office, Office of A/E Engineering, Surveying and Mapping Services, 11 Grove Avenue, Sebastia, California.



F.A. 362301	HARD COPY	APPRaisal	W.A.P. REFERENCES	RECORD	WORKSHEET	DRAWING DATE	COUNTY	ROUTE	POST MILE	KILOMETER POST	SHEET 6 OF 6
R/W P.S. MAL	H-119.7 H-119.10	X	R-1199			9/8/2010	SON	101	26.0	41.6	