

1

Right-Of-Way Vacation for A Portion Of Old Maple Avenue; RWV21-0003

Sonoma County

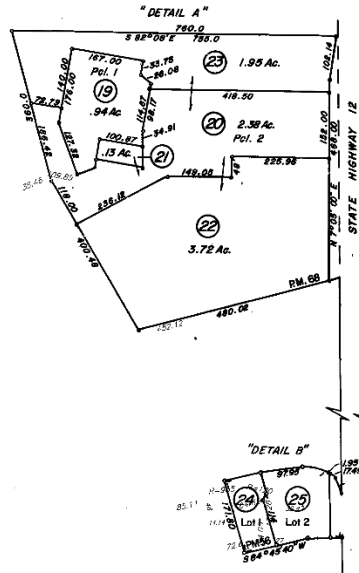


Assessor Parcel Map

COUNTY ASSESSOR'S PARCEL MAP

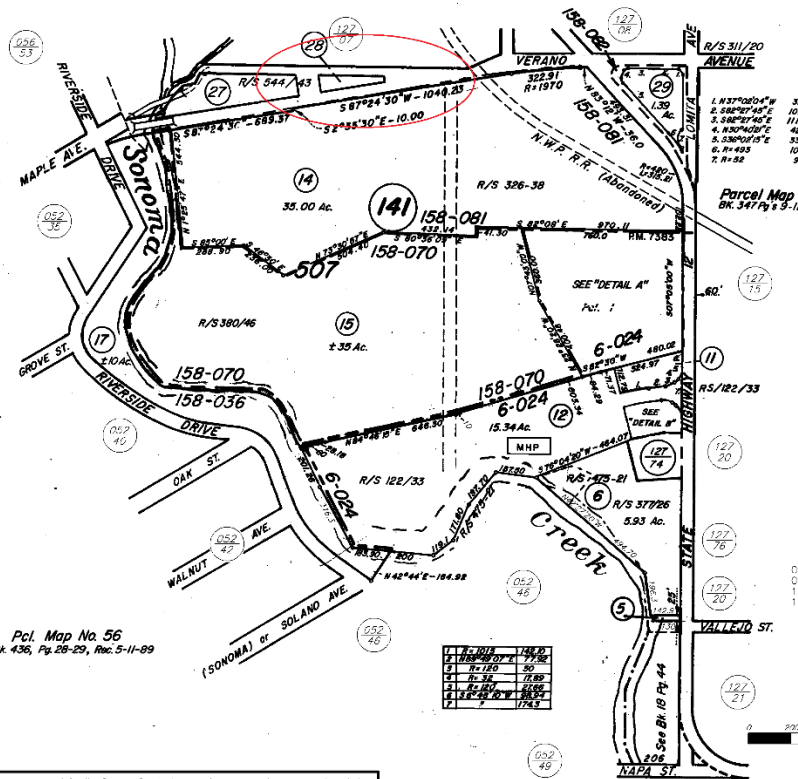
127-14

Parcel Map No. 68
Rec. 5-17-90, Bk. 456, Pgs. 36-37



Pcl. Map No. 56
Bk. 436, Pg. 28-29, Rec. 5-11-89

NOTE: This map was prepared for the Sonoma County Assessor for assessment purposes only and does not indicate parcel legality or valid building sites. To verify legal parcel status check with your city or county development or planning director. No liability is assumed for the accuracy of the data collected.



TAX RATE AREA
 158-070
 158-081
 158-082
 006-024

Parcel Map 7383
Bk. 347 Pg. 9-11, Rec. 06/30/98

SCALE: 1"=400'

REVISED
 08-10-92=28 RF
 05-18-95=29 KT
 10-28-01= 3 KB
 10-25-06=Adj. Pg. KB

1	158-070	158.00
2	158-070	158.00
3	158-070	158.00
4	158-070	158.00
5	158-070	158.00
6	158-070	158.00
7	158-070	158.00
8	158-070	158.00
9	158-070	158.00
10	158-070	158.00
11	158-070	158.00
12	158-070	158.00
13	158-070	158.00
14	158-070	158.00
15	158-070	158.00
16	158-070	158.00
17	158-070	158.00
18	158-070	158.00
19	158-070	158.00
20	158-070	158.00
21	158-070	158.00
22	158-070	158.00
23	158-070	158.00
24	158-070	158.00
25	158-070	158.00
26	158-070	158.00
27	158-070	158.00
28	158-070	158.00
29	158-070	158.00
30	158-070	158.00
31	158-070	158.00
32	158-070	158.00
33	158-070	158.00
34	158-070	158.00
35	158-070	158.00
36	158-070	158.00
37	158-070	158.00
38	158-070	158.00
39	158-070	158.00
40	158-070	158.00
41	158-070	158.00
42	158-070	158.00
43	158-070	158.00
44	158-070	158.00
45	158-070	158.00
46	158-070	158.00
47	158-070	158.00
48	158-070	158.00
49	158-070	158.00
50	158-070	158.00

Assessor's Map Bk. 127, Pg. 14
 Sonoma County, Calif. (1/010)

Current access to Old Maple Avenue

3



Looking east along abandonment

4



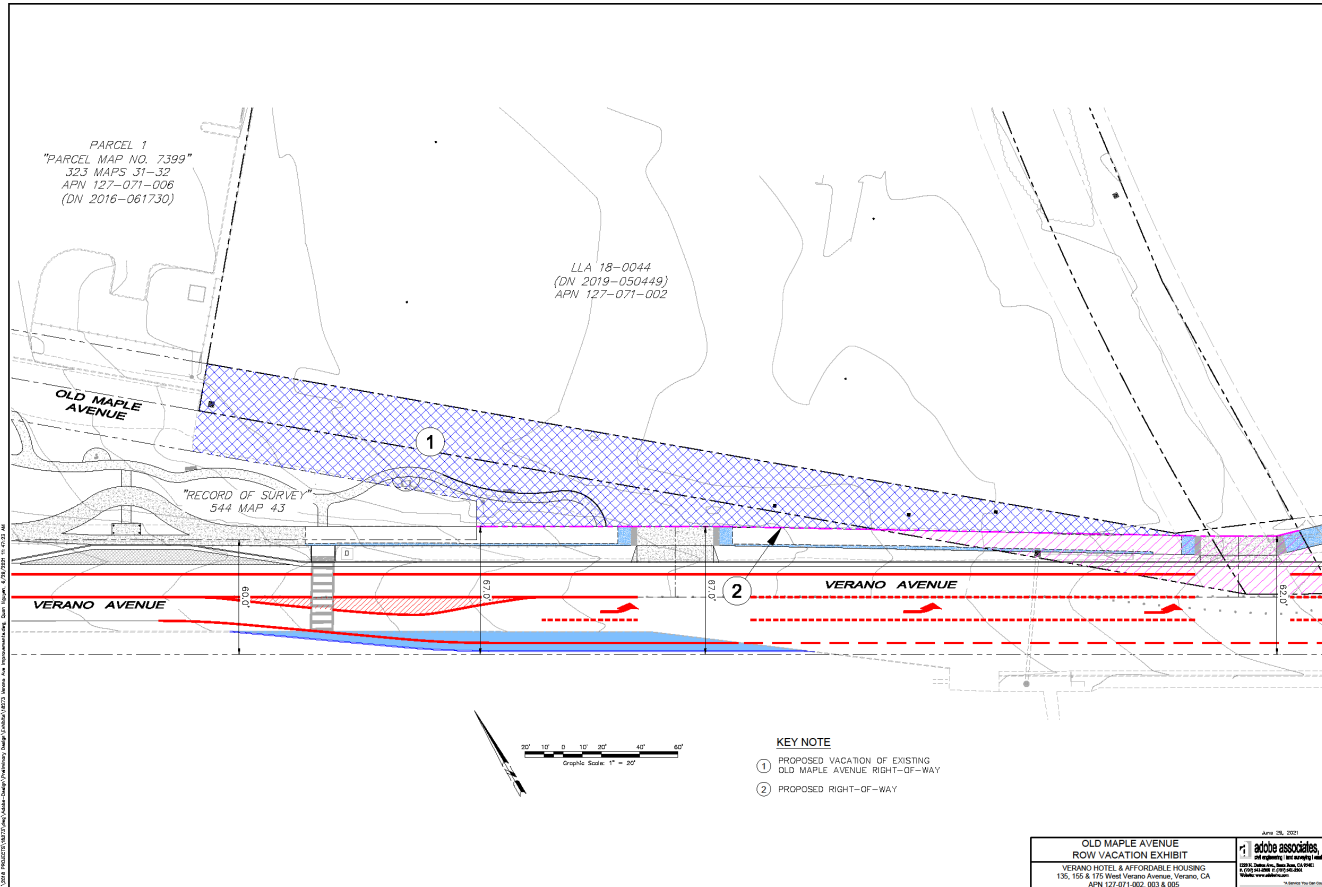
Informal access at Verano Avenue

5



Area of abandonment

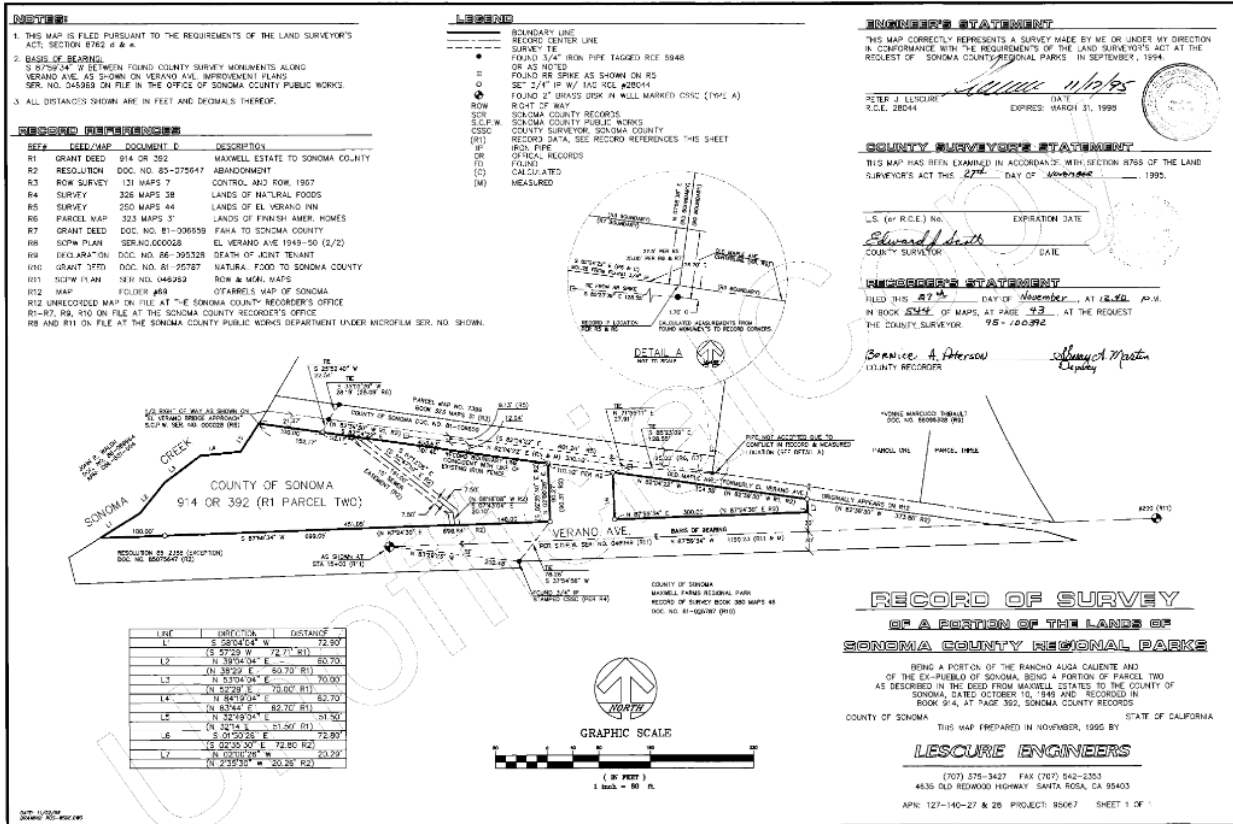
6



Record of Survey

544

43



9

Questions?

