

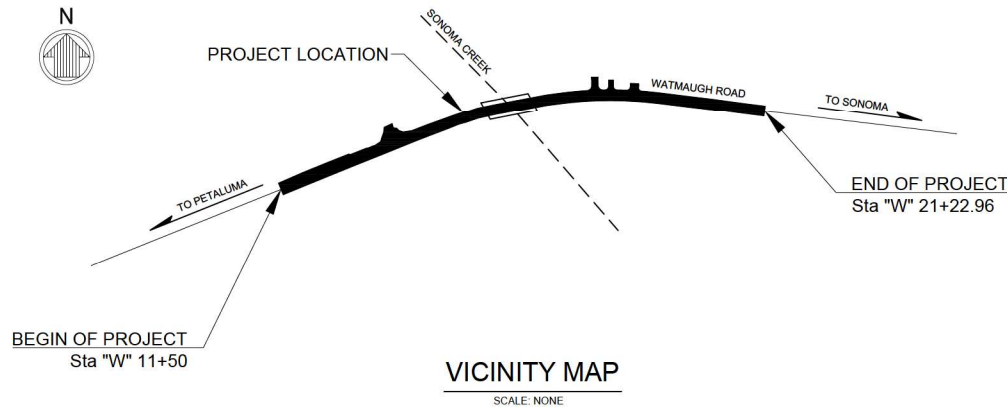
SONOMA COUNTY
PUBLIC INFRASTRUCTURE

PROJECT PLANS FOR CONSTRUCTION ON
WATMAUGH ROAD
(COUNTY ROAD NO. 5504)
FROM
0.10 MILES WEST OF SONOMA CREEK
TO
0.08 MILES EAST OF SONOMA CREEK
PM 11.77 TO PM 11.95
FEDERAL AID PROJECT NO. BRLS 5920(092)

TO BE SUPPLEMENTED BY CALIFORNIA DEPARTMENT OF TRANSPORTATION STANDARD PLANS AND STANDARD SPECIFICATIONS, DATED 2024, AND COUNTY OF SONOMA DEPARTMENT OF TRANSPORTATION AND PUBLIC WORKS CONSTRUCTION STANDARDS DATED, NOVEMBER 2009.



INDEX OF PLAN SHEETS		
SHEET NO.	SHEET NAME	SHEET TITLE
1	T-1	TITLE SHEET
2	DD-1	DEMOLITION & DISPOSITION PLAN
3	X-1	TYPICAL CROSS SECTIONS
4-6	L-1 - L-3	LAYOUTS
7	P-1	PROFILE AND SUPERELEVATION
8	C-1	CONSTRUCTION DETAILS
9	C-2	CONSTRUCTION DETAILS
10	EC-1	EROSION CONTROL PLAN
11	SP-1	ROCK SLOPE PROTECTION PLAN
12-14	D-1 - D-3	GRADING AND DRAINAGE PLANS
15	CS-1	CONSTRUCTION AREA SIGNS AND DETOUR PLAN
16	PD-1	PAVEMENT DELINEATION AND SIGN PLAN
17	SD-1	SIGN DETAILS
18-39	S-1 TO S-22	BRIDGE PLANS



APPROVED FOR CONSTRUCTION BY:

Johannes J. Hoevertsz Jan 21, 2026
JOHANNES J. HOEVERTSZ, PE 67468 DIRECTOR DATE
DEPARTMENT OF PUBLIC INFRASTRUCTURE

SUBMITTED BY:

Garrett Dekker 12-08-2025
GARRETT DEKKER, PE 77718 DATE
PROJECT ENGINEER - DESIGN
MOFFATT & NICHOL

NOTE:
The Contractor shall verify all controlling field dimensions before ordering or fabricating any material.

DESIGN BY	-	<i>Garrett Dekker</i>
DRAWING BY	NV	REGISTERED CIVIL ENGINEER
CHECKED BY	GD	12-08-2025 PLANS APPROVAL DATE



"RECORD DRAWING" INFORMATION TO BE COMPLETED AFTER CONSTRUCTION		CONSTRUCTION COMPLETED:	
DATE	REVISION	BY	APPROVED

moffatt & nichol
2165 NORTH CALIFORNIA BLVD., SUITE 500
WALNUT CREEK, CALIFORNIA 94596
(925) 944-5411



SONOMA COUNTY
PUBLIC INFRASTRUCTURE
JOHANNES J. HOEVERTSZ, P.E., DIRECTOR






TITLE SHEET		ROAD NUMBER	09018
WATMAUGH ROAD BRIDGE REPLACEMENT OVER SONOMA CREEK		BUDGET NUMBER	C11002
		FISCAL YFAR	2025-2026
		SHEET NUMBER	1
TOTAL SHEETS		39	

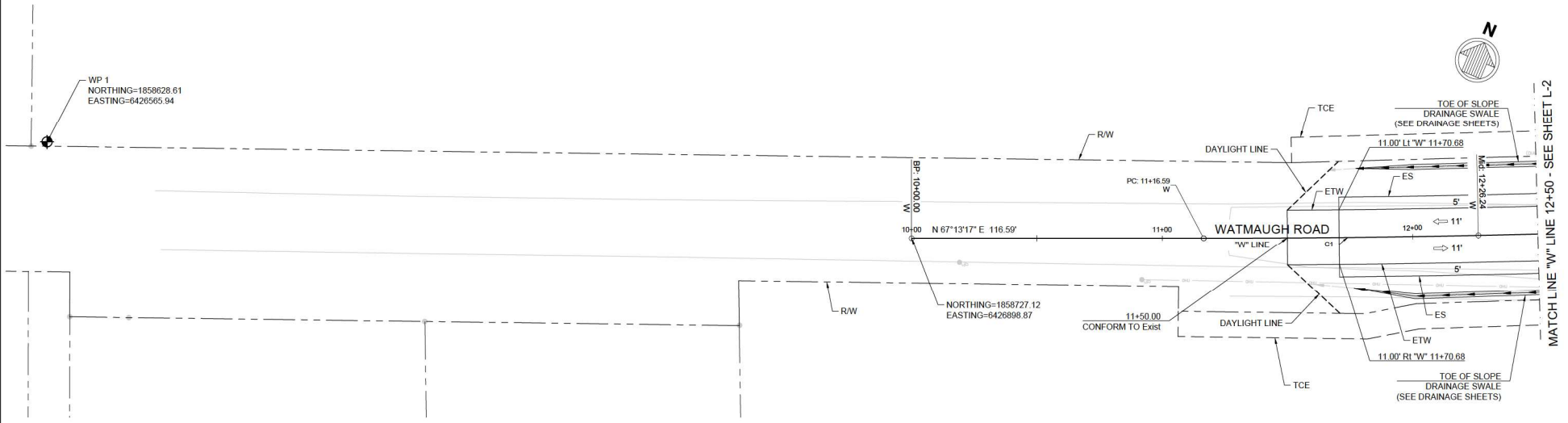
T-1

NOTE:

1. ALL CALLOUTS REFERENCE "W" LINE UNLESS OTHERWISE NOTED.
2. FOR ADDITIONAL DETAILS, SEE CONSTRUCTION DETAILS SHEETS.
3. UNLESS OTHERWISE NOTED ON PLANS, SEE CALTRANS STANDARD PLAN A10A AND REVISED STANDARD PLAN A10B FOR ABBREVIATIONS.
4. DAYLIGHT LINE OCCURS AT RIGHT OF WAY UNLESS OTHERWISE INDICATED ON PLAN.

LEGEND:

-  CONST DETAIL REFERENCE
-  CREEK FLOWLINE
-  WORK POINT
-  FLOWLINE (SEE DRAINAGE PLANS)
-  DRAINAGE SWALE (SEE DRAINAGE PLANS)



SURVEY CONTROL NOTES:

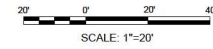
CINQUINI & PASSARINO CONTROL POINT No. 1, BEING A FOUND No. 5 REBAR WITH CAP STAMPED DOTPW ELEVATION = 42.53' (NAVD 88).

THE ORTHOMETRIC ELEVATIONS SHOWN HEREON ARE BASED ON THE NORTH AMERICAN VERTICAL DATUM OF 1988 (NAVD 1988) AND WERE DETERMINED BY STATIC GPS TIES TO CGPS STATIONS P199, P200 & P264 WITH PUBLISHED ELLIPSOIDAL HEIGHTS OF (P199 = 184.285'), (P200 = -80.675') AND (P267 = 759.703'), IN ADDITION TO APPLYING THE NGS GEOID HEIGHT MODEL "GEOID2012A".

BASIS OF BEARINGS:

THE BASIS OF BEARINGS FOR THIS SURVEY IS THE CALIFORNIA COORDINATE SYSTEM, ZONE 2, NAD 83, EPOCH 2011.00 AS DETERMINED LOCALLY BY A LINE BETWEEN CONTINUOUS GLOBAL POSITIONING SYSTEMS (CGPS) STATIONS P199 AND STATION P200, BEING SOUTH 59°22'38" EAST AS DERIVED FROM GEODETIC VALUES PUBLISHED BY THE CALIFORNIA SPATIAL REFERENCE CENTER (CSRC).

CURVE DATA				
No.	R	Δ	T	L
C1	5230.00'	2° 24' 09"	109.67'	219.31'



NOTE:
The Contractor shall verify all controlling field dimensions before ordering or fabricating any material.

DESIGN BY: NV
 DRAWING BY: MC
 CHECKED BY: JL

Nicholas G. Velazquez
 REGISTERED CIVIL ENGINEER
 12-05-2023
 PLANS APPROVAL DATE



"RECORD DRAWING" INFORMATION TO BE COMPLETED AFTER CONSTRUCTION		CONSTRUCTION COMPLETED:	
RESIDENT ENGINEER AS BUILT DRAWINGS BY:		RESIDENT ENGINEER AS BUILT DRAWINGS BY:	
DATE	REVISION	BY	APPROVED

moffatt & nichol
 2165 NORTH CALIFORNIA BLVD., SUITE 500
 WALNUT CREEK, CALIFORNIA 94596
 (925) 944-5411

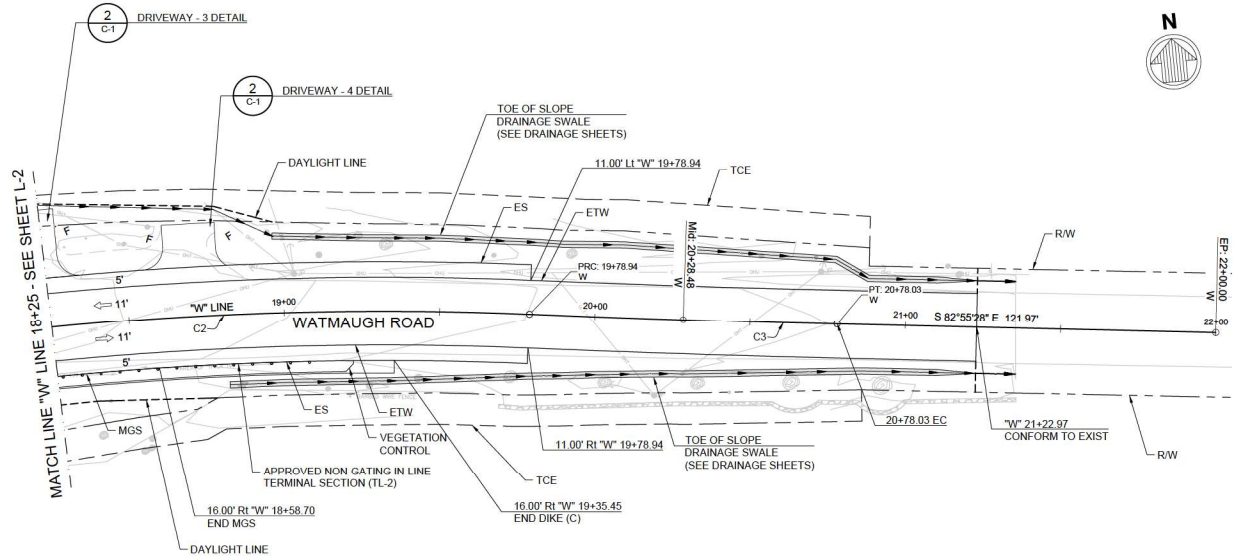
SONOMA COUNTY PUBLIC INFRASTRUCTURE
 JOHANNES J. HOEVERTZ, P.E., DIRECTOR

LAYOUT WATMAUGH ROAD BRIDGE REPLACEMENT OVER SONOMA CREEK	ROAD NUMBER	09018
	BUDGET NUMBER	C11002
	FISCAL YEAR	2025-2026
SHEET NUMBER	4	
TOTAL SHEETS	39	

DATE: 12/05/23 BY: MC CHECKED BY: JL PROJECT: WATMAUGH ROAD BRIDGE REPLACEMENT OVER SONOMA CREEK SHEET: L-1 OF 39
 FILE: S:\2023\12\05\23\WATMAUGH ROAD BRIDGE REPLACEMENT OVER SONOMA CREEK\DWG\WATMAUGH ROAD BRIDGE REPLACEMENT OVER SONOMA CREEK L-1.dwg
 PLOT: 12/05/23 10:00 AM

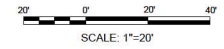
NOTE:

- FOR OTHER CIVIL NOTES AND LEGEND, SEE SHEET L-1.
- DAYLIGHT LINE OCCURS AT RIGHT OF WAY UNLESS OTHERWISE INDICATED ON PLAN.



CURVE DATA				
No.	R	Δ	T	L
C2	1105.00'	33° 20' 32"	330.91'	643.04'
C3	5230.00'	1° 05' 08"	49.55'	99.09'

NOTE:
The Contractor shall verify all controlling field dimensions before ordering or fabricating any material.



DESIGN BY: NV
 DRAWING BY: MC
 CHECKED BY: JL

REGISTERED CIVIL ENGINEER
 12-08-2023
 PLANS APPROVAL DATE



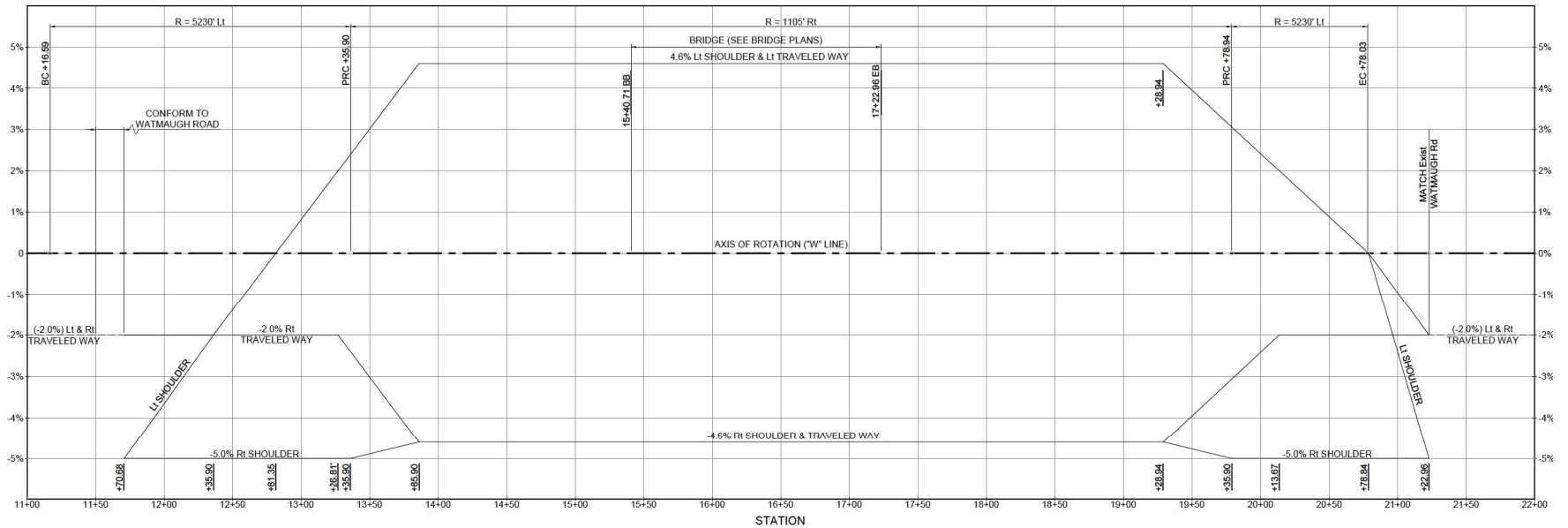
"RECORD DRAWING" INFORMATION TO BE COMPLETED AFTER CONSTRUCTION		CONSTRUCTION COMPLETED:	
RESIDENT ENGINEER AS BUILT DRAWINGS BY:		DATE	
DATE	REVISION	BY	APPROVED

moffatt & nichol
 2165 NORTH CALIFORNIA BLVD, SUITE 500
 WALNUT CREEK, CALIFORNIA 94596
 (925) 944-5411

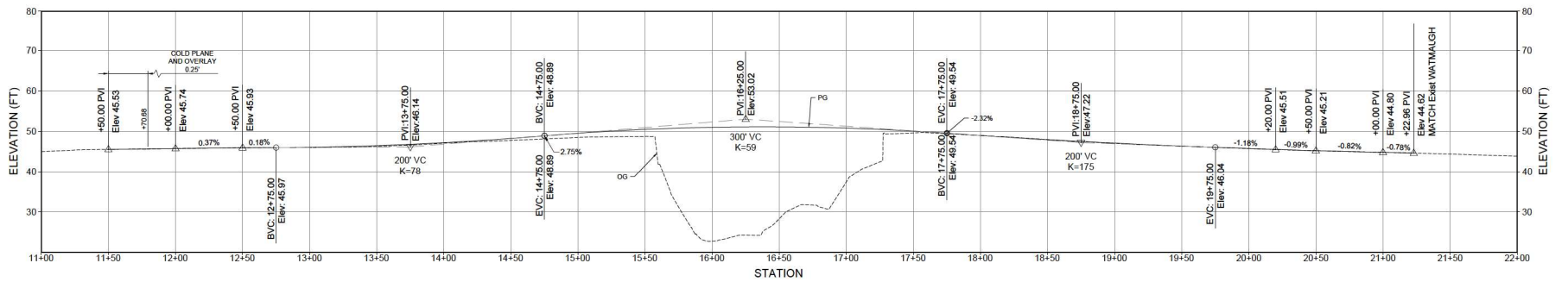
SONOMA COUNTY
 PUBLIC INFRASTRUCTURE
 JOHANNES J. HOEVERTZ, P.E., DIRECTOR

LAYOUT
WATMAUGH ROAD BRIDGE REPLACEMENT OVER SONOMA CREEK

ROAD NUMBER:	09018
BUDGET NUMBER:	C11002
FISCAL YEAR:	2025-2026
SHEET NUMBER:	6
TOTAL SHEETS:	39



SUPERELEVATION DIAGRAM



PROFILE

"W" LINE
SCALE: HORIZ 1" = 30'
VERT 1" = 10'

NOTE:
The Contractor shall verify all controlling field dimensions before ordering or fabricating any material.

DESIGN BY	NV
DRAWING BY	MC
CHECKED BY	JL

N. V. [Signature]
REGISTERED CIVIL ENGINEER
12-05-2023
PLANS APPROVAL DATE



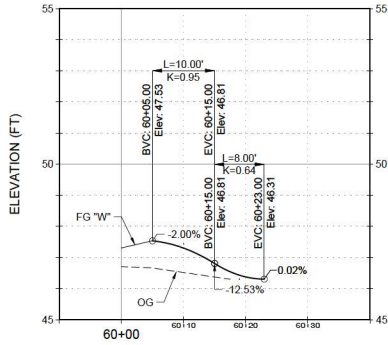
"RECORD DRAWING" INFORMATION TO BE COMPLETED AFTER CONSTRUCTION		CONSTRUCTION COMPLETED:	
DATE	REVISION	BY	APPROVED

moffatt & nichol
2165 NORTH CALIFORNIA BLVD, SUITE 500
WALNUT CREEK, CALIFORNIA 94596
(925) 944-5411

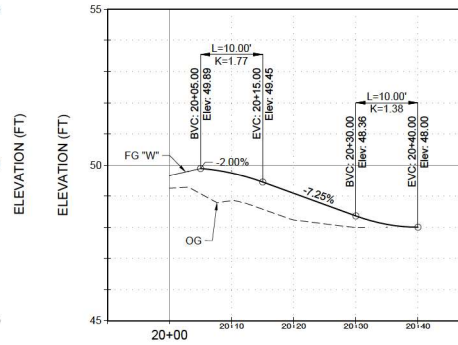


SONOMA COUNTY
PUBLIC INFRASTRUCTURE
JOHANNES J. HOEVERTZ, P.E., DIRECTOR

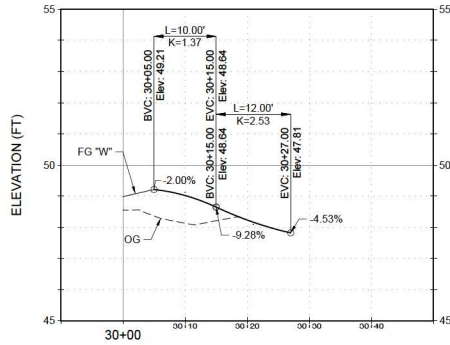
PROFILE & SUPERELEVATION WATMAUGH ROAD BRIDGE REPLACEMENT OVER SONOMA CREEK	ROAD NUMBER	09018
	BUDGET NUMBER	C111002
	FISCAL YEAR	2025-2028
	SHEET NUMBER	7
TOTAL SHEETS		39



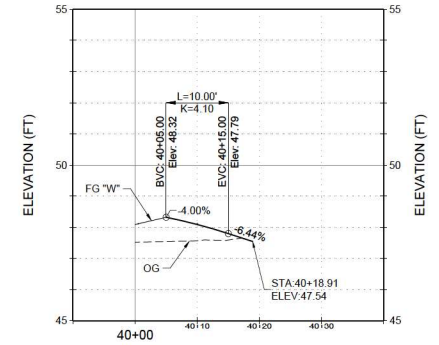
DRIVEWAY 1 PROFILE



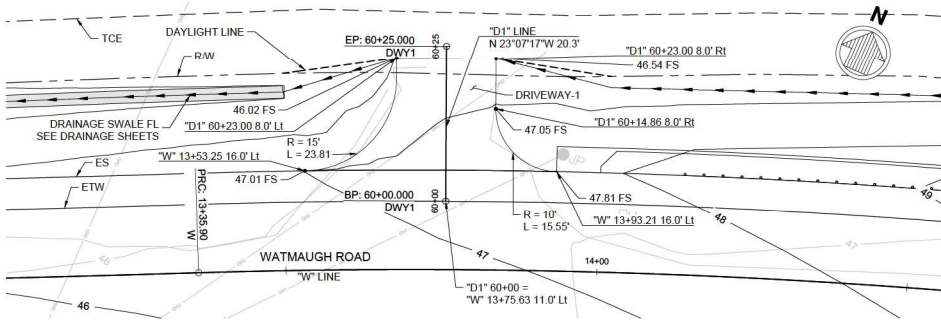
DRIVEWAY 2 PROFILE



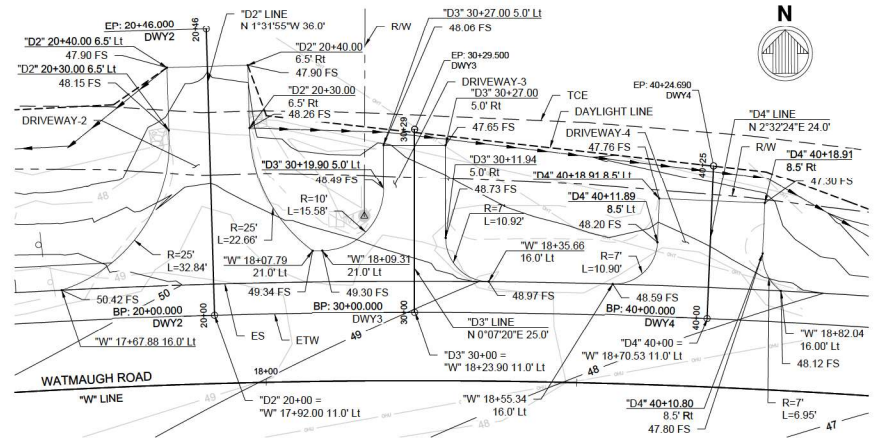
DRIVEWAY 3 PROFILE



DRIVEWAY 4 PROFILE



1 DRIVEWAY 1 DETAIL
SCALE: 1"=10'



2 DRIVEWAYS 2-4 DETAIL
SCALE: 1"=10'

NOTE:
The Contractor shall verify all controlling field dimensions before ordering or fabricating any material.

DESIGN BY	NV	<i>Nick V. Veltrop</i>
DRAWING BY	MC	REGISTERED CIVIL ENGINEER
CHECKED BY	JL	PLANS APPROVAL DATE



"RECORD DRAWING" INFORMATION TO BE COMPLETED AFTER CONSTRUCTION		CONSTRUCTION COMPLETED:	
DATE	REVISION	RESIDENT ENGINEER AS BUILT DRAWINGS BY:	DATE

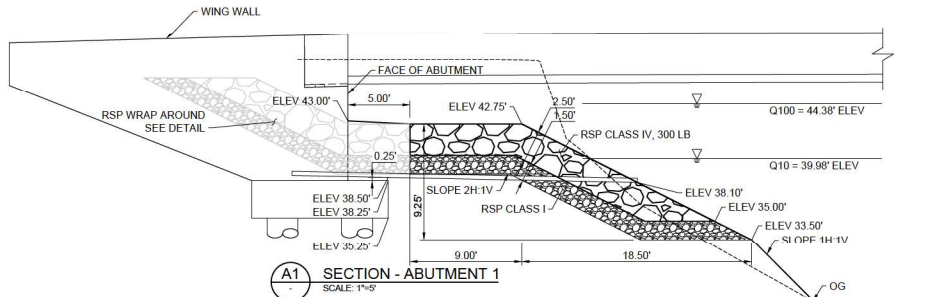
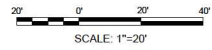
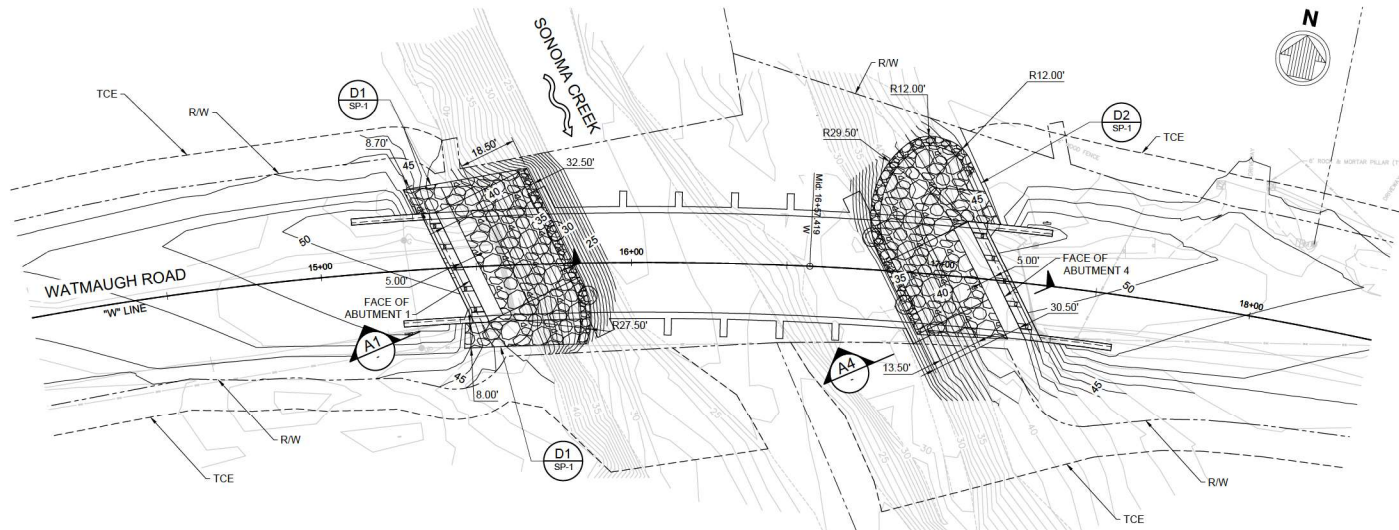
moffatt & nichol
2165 NORTH CALIFORNIA BLVD, SUITE 500
WALNUT CREEK, CALIFORNIA 94596
(925) 944-5411



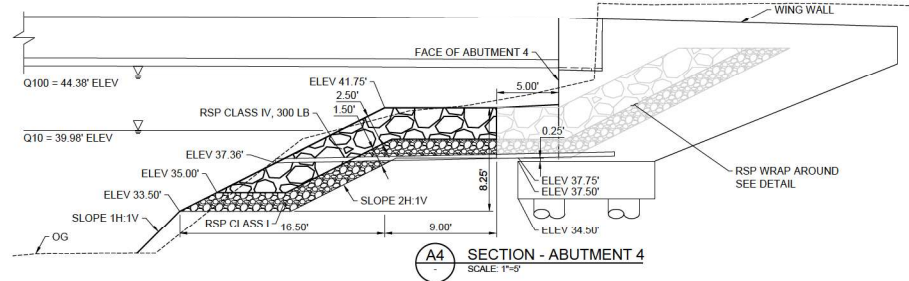
SONOMA COUNTY
PUBLIC INFRASTRUCTURE
JOHANNES J. HOEVERTZ, P.E., DIRECTOR

CONSTRUCTION DETAILS WATMAUGH ROAD BRIDGE REPLACEMENT OVER SONOMA CREEK	ROAD NUMBER	09018
	BUDGET NUMBER	C111002
	FISCAL YEAR	2025-2028
SHEET NUMBER	8	
TOTAL SHEETS	39	

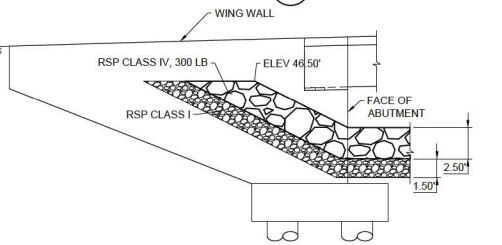
C-1



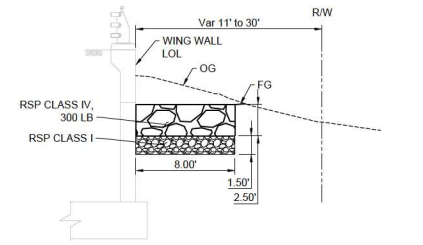
A1 SECTION - ABUTMENT 1
SCALE: 1"=5'



A4 SECTION - ABUTMENT 4
SCALE: 1"=5'



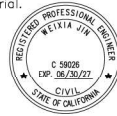
D1 TYPICAL DETAIL: RSP WRAP AROUND
SCALE: 1"=5'



D2 TYP SECTION - RSP WRAP
SCALE: 1"=5'

NOTE:
The Contractor shall verify all controlling field dimensions before ordering or fabricating any material.

DESIGN BY	NV	<i>U. N. V.</i>
DRAWING BY	DP	12-08-2023
CHECKED BY	WJ	PLANS APPROVAL DATE



"RECORD DRAWING" INFORMATION TO BE COMPLETED AFTER CONSTRUCTION		CONSTRUCTION COMPLETED:	
DATE	REVISION	BY	APPROVED

moffatt & nichol
2165 NORTH CALIFORNIA BLVD, SUITE 500
WALNUT CREEK, CALIFORNIA 94596
(925) 944-5411



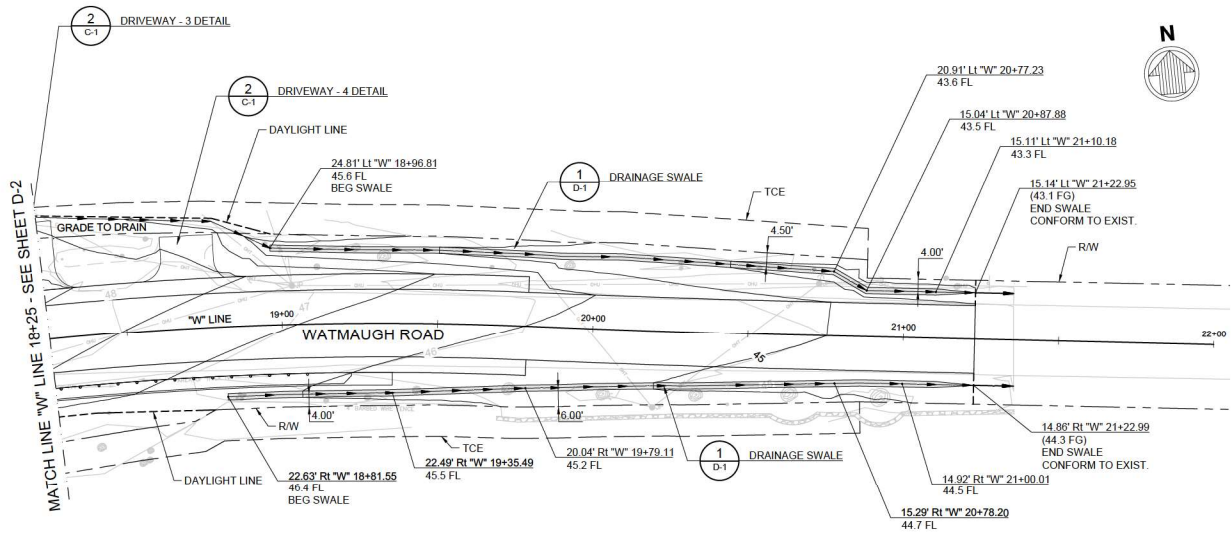
SONOMA COUNTY
PUBLIC INFRASTRUCTURE
JOHANNES J. HOEVERTZ, P.E., DIRECTOR

ROCK SLOPE PROTECTION PLAN		ROAD NUMBER	09018
		BUDGET NUMBER	C111002
WATMAUGH ROAD BRIDGE REPLACEMENT OVER SONOMA CREEK		FISCAL YEAR	2025-2028
		SHEET NUMBER	11
TOTAL SHEETS		39	

SP-1

NOTE:

- FOR LEGEND, SEE SHEET D-1.
- DAYLIGHT LINE OCCURS AT RIGHT OF WAY UNLESS OTHERWISE INDICATED ON PLAN.



NOTE:
The Contractor shall verify all controlling field dimensions before ordering or fabricating any material.

DESIGN BY	DP	<i>Jimmy Palacios</i>
DRAWING BY	DP	12-08-2023
CHECKED BY	JP	



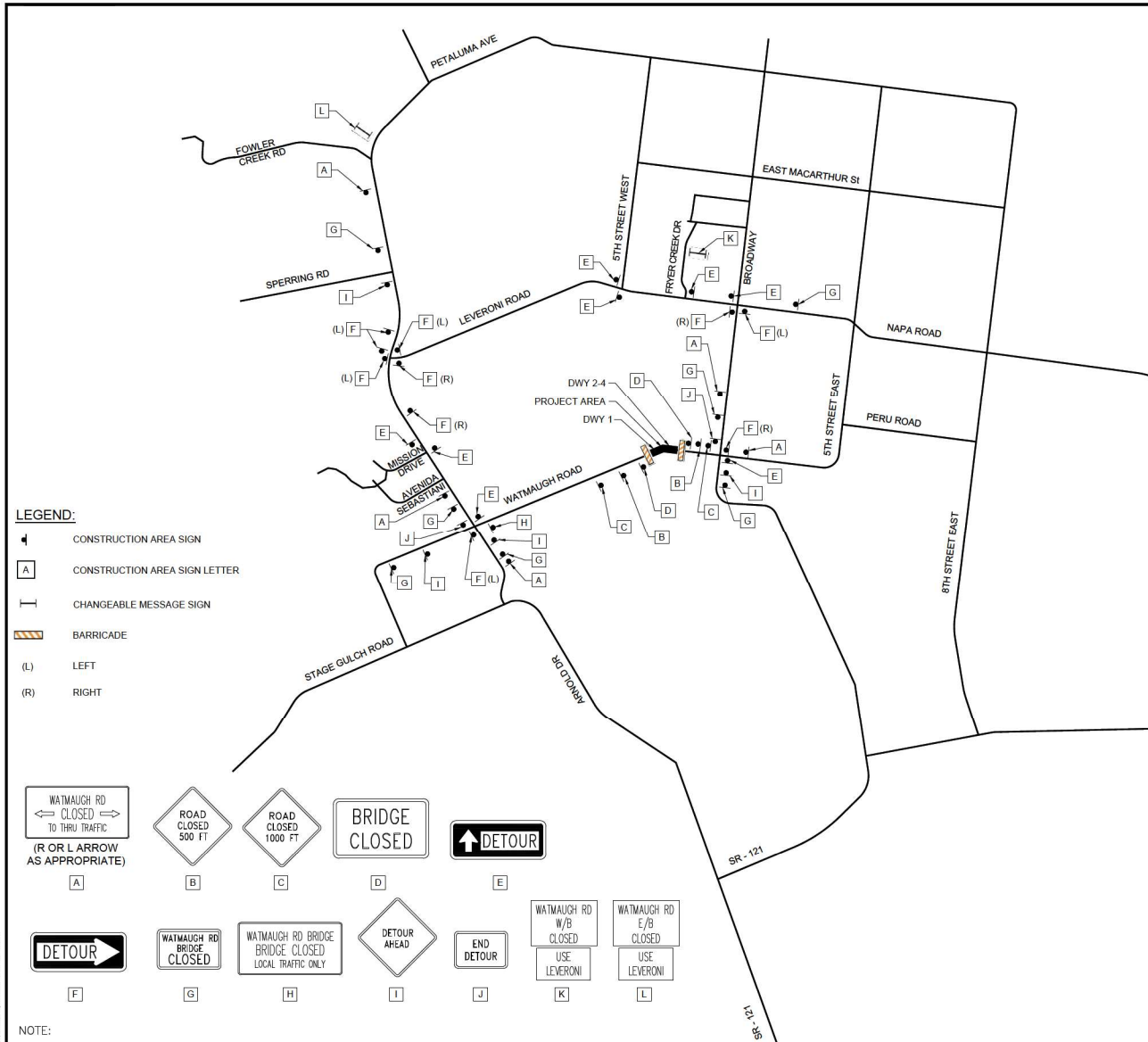
"RECORD DRAWING" INFORMATION TO BE COMPLETED AFTER CONSTRUCTION		CONSTRUCTION COMPLETED:	
DATE	REVISION	BY	APPROVED

moffatt & nichol
2165 NORTH CALIFORNIA BLVD, SUITE 500
WALNUT CREEK, CALIFORNIA 94596
(925) 944-5411

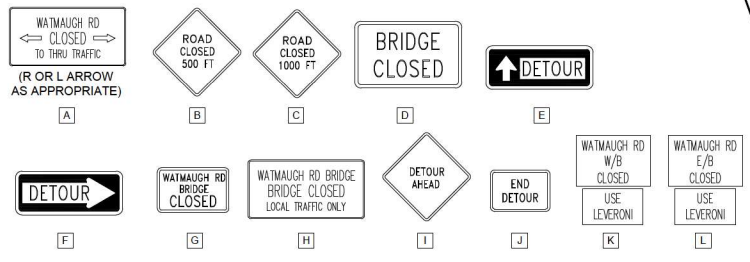


SONOMA COUNTY
PUBLIC INFRASTRUCTURE
JOHANNES J. HOEVERTZS, P.E., DIRECTOR

GRADING AND DRAINAGE PLAN		ROAD NUMBER	09018
WATMAUGH ROAD BRIDGE REPLACEMENT OVER SONOMA CREEK		BUDGET NUMBER	C11002
		FISCAL YEAR	2025-2028
		SHEET NUMBER	14
		TOTAL SHEETS	39



- LEGEND:**
- ◀ CONSTRUCTION AREA SIGN
 - A CONSTRUCTION AREA SIGN LETTER
 - ↔ CHANGEABLE MESSAGE SIGN
 - ▬ BARRICADE
 - (L) LEFT
 - (R) RIGHT



- NOTES:**
1. LOCATIONS OF CONSTRUCTION AREA SIGNS ARE APPROXIMATE. EXACT LOCATIONS WILL BE DETERMINED BY THE ENGINEER.
 2. ALL SIGNS SHALL BE STATIONARY MOUNTED AND REMAIN IN PLACE FOR THE ENTIRE COURSE OF CONSTRUCTION.
 3. ALL TEMPORARY CONSTRUCTION AREA SIGNS ARE BASED ON 2012 CALIFORNIA MUTCD.
 4. MAINTAIN 24 HOUR ACCESS TO DRIVEWAYS DURING CONSTRUCTION. Dwy-1 FROM WEST OF CREEK AND Dwy-2 - Dwy-5 FROM EAST OF CREEK.
 5. FINAL LOCATIONS OF DETOUR SIGNS AND MESSAGE BOARDS MUST BE APPROVED IN THE FIELD.

CONSTRUCTION AREA SIGNS

SIGN	SIGN CODE	PANEL SIZE	SIGN MESSAGE	No. OF POSTS AND SIZE	No. OF SIGNS
A	R11-4 (MODIFIED)	60" x 30"	WATMAUGH RD CLOSED TO THRU TRAFFIC (LT/RT ARROW)	1-4 in x 6 in	5
B	W20-3	36" x 36"	ROAD CLOSED 500 FT	1-4 in x 6 in	2
C	W20-3	36" x 36"	ROAD CLOSED 1000 FT	1-4 in x 6 in	2
D	R11-2	48" x 30"	BRIDGE CLOSED	1-4 in x 4 in	2
E	SC3 (CA)	48" x 18"	DETOUR (STRAIGHT ARROW)	1-4 in x 4 in	7
F	M4-10	48" x 18"	DETOUR (LEFT/RIGHT ARROW)	1-4 in x 4 in	11
G	R11-2 (MODIFIED)	48" x 30"	WATMAUGH RD BRIDGE CLOSED	1-4 in x 6 in	6
H	R11-3A (MODIFIED)	60" x 30"	WATMAUGH RD BRIDGE CLOSED LOCAL TRAFFIC ONLY	1-4 in x 6 in	1
I	W20-2	36" x 36"	DETOUR AHEAD	1-4 in x 6 in	4
J	M4-8A	24" x 18"	END DETOUR	1-4 in x 4 in	2

CHANGEABLE MESSAGE SIGN	SIGN MESSAGE 1ST FRAME	SIGN MESSAGE 2ND FRAME	NUMBER OF SIGNS
K	WATMAUGH RD W/B CLOSED	USE LEVERONI	1
L	WATMAUGH RD E/B CLOSED	USE LEVERONI	1

NOTE:
The Contractor shall verify all controlling field dimensions before ordering or fabricating any material.

DESIGN BY: NV
DRAWING BY: MC
CHECKED BY: NV

REGISTERED CIVIL ENGINEER
12-08-2025
PLANS APPROVAL DATE

CONSTRUCTION COMPLETED:

DATE	REVISION	BY	APPROVED

moffatt & nichol
2165 NORTH CALIFORNIA BLVD, SUITE 500
WALNUT CREEK, CALIFORNIA 94596
(925) 944-5411

SONOMA COUNTY
PUBLIC INFRASTRUCTURE
JOHANNES J. HOEVERTSZ, P.E., DIRECTOR

CONSTRUCTION AREA SIGNS & DETOUR PLAN

WATMAUGH ROAD BRIDGE REPLACEMENT OVER SONOMA CREEK

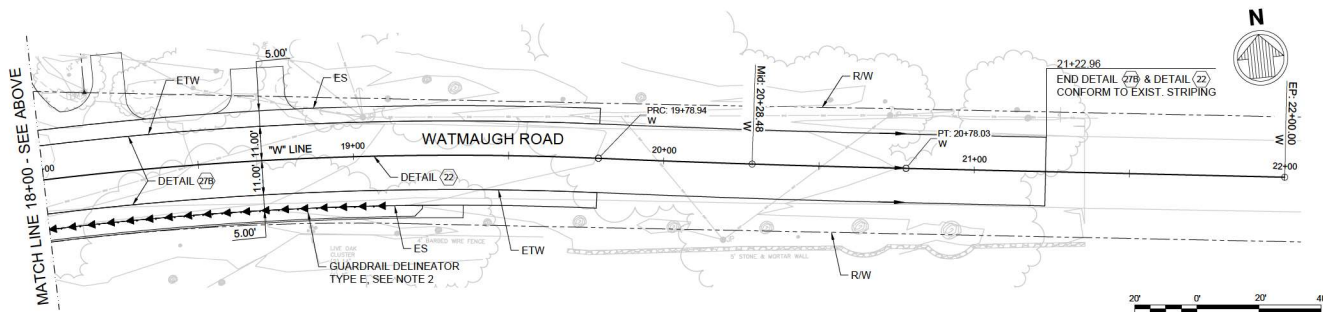
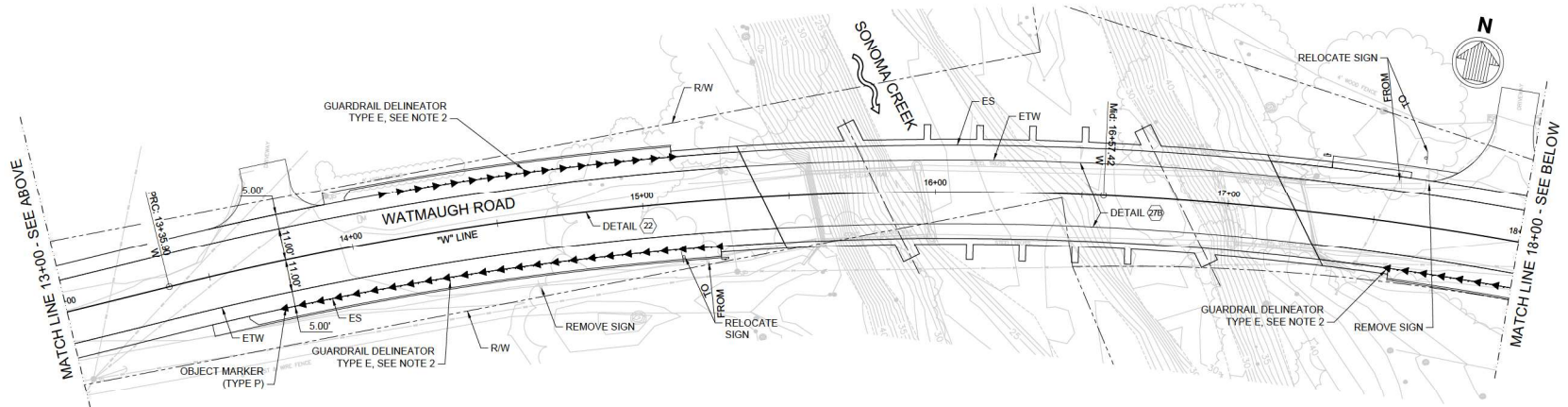
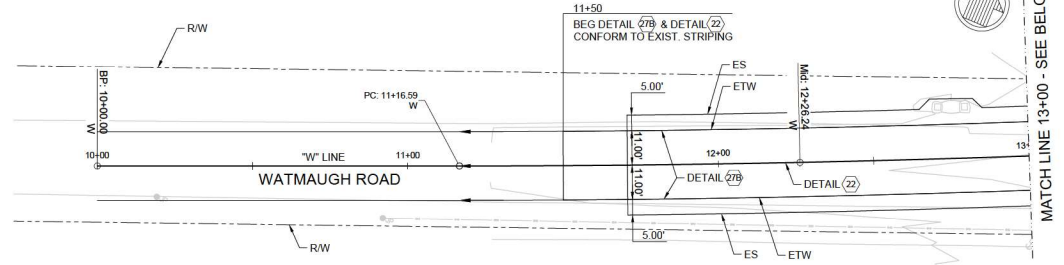
ROAD NUMBER	09018
BUDGET NUMBER	C11002
FISCAL YEAR	2025-2026
SHEET NUMBER	15
TOTAL SHEETS	39

NOTES:

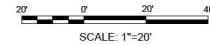
- FOR PAVEMENT DELINEATION DETAILS, SEE CALTRANS STANDARD PLANS A20A AND A20B.
- PLACE GUARDRAIL DELINEATOR ON EACH GUARDRAIL POST

LEGEND

⑥ CALTRANS DETAIL NO.



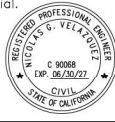
NOTE:
The Contractor shall verify all controlling field dimensions before ordering or fabricating any material.



MAP: 2/20/2019 10:40 AM 2/20/2019 10:40 AM 2/20/2019 10:40 AM 2/20/2019 10:40 AM 2/20/2019 10:40 AM 2/20/2019 10:40 AM 2/20/2019 10:40 AM 2/20/2019 10:40 AM 2/20/2019 10:40 AM 2/20/2019 10:40 AM
 PLOT: 1/15/2020 10:40 AM 1/15/2020 10:40 AM 1/15/2020 10:40 AM 1/15/2020 10:40 AM 1/15/2020 10:40 AM 1/15/2020 10:40 AM 1/15/2020 10:40 AM 1/15/2020 10:40 AM 1/15/2020 10:40 AM 1/15/2020 10:40 AM

DESIGN BY	NV
DRAWING BY	MC
CHECKED BY	NV


 REGISTERED CIVIL ENGINEER
 12-08-2023
 PLANS APPROVAL DATE



"RECORD DRAWING" INFORMATION TO BE COMPLETED AFTER CONSTRUCTION		CONSTRUCTION COMPLETED:	
DATE	REVISION	RESIDENT ENGINEER AS BUILT DRAWINGS BY:	BT

 **moffatt & nichol**
 2165 NORTH CALIFORNIA BLVD, SUITE 500
 WALNUT CREEK, CALIFORNIA 94596
 (925) 944-5411

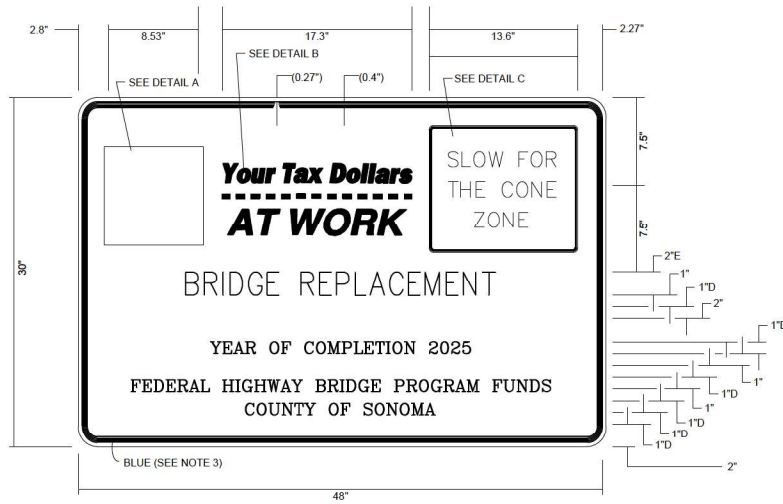


SONOMA COUNTY
 PUBLIC INFRASTRUCTURE
 JOHANNES J. HOEVERTZ, P.E., DIRECTOR

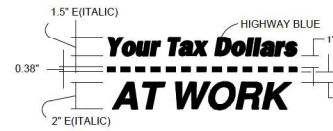
PAVEMENT DELINEATION & SIGN PLAN WATMAUGH ROAD BRIDGE REPLACEMENT OVER SONOMA CREEK	ROAD NUMBER	09018
	BUDGET NUMBER	C111002
	FISCAL YEAR	2025-2028
	SHEET NUMBER	16
	TOTAL SHEETS	39

PD-1

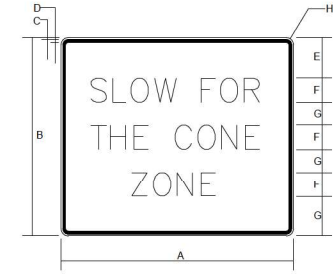
- EXCEPT AS OTHERWISE SHOWN, THE LEGEND OF SIGN SHALL BE BLACK ON A WHITE BACKGROUND (NON-REFLECTIVE).
- THE BORDER OF THE SIGN AND DETAIL "B", SHALL BE BLUE (NON-REFLECTIVE).
- THE RECTANGLE IN DETAIL "C", SHALL BE ORANGE (NON-REFLECTIVE). THE BORDER AND LEGEND SHALL BE BLACK. ENGLISH UNITS SHOWN.



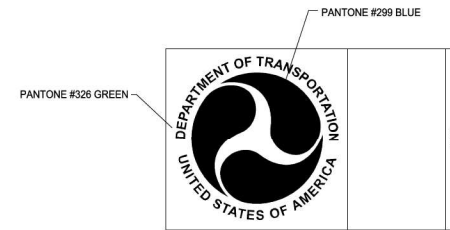
CONSTRUCTION PROJECT
INFORMATION SIGN
NO SCALE



DETAIL B
(SEE NOTE 2)
NO SCALE



DETAIL C
(SEE NOTE 3)
NO SCALE



DETAIL A
NO SCALE

NOTE:
The Contractor shall verify all controlling field dimensions before ordering or fabricating any material.

DESIGN BY	NV	<i>N. V. [Signature]</i>
DRAWING BY	MC	REGISTERED CIVIL ENGINEER
CHECKED BY	NV	12-08-2023 PLANS APPROVAL DATE



"RECORD DRAWING" INFORMATION TO BE COMPLETED AFTER CONSTRUCTION		CONSTRUCTION COMPLETED:	
DATE	REVISION	BY	APPROVED

moffatt & nichol
2165 NORTH CALIFORNIA BLVD, SUITE 500
WALNUT CREEK, CALIFORNIA 94596
(925) 944-5411



SONOMA COUNTY
PUBLIC INFRASTRUCTURE
JOHANNES J. HOEVERTSZ, P.E., DIRECTOR

SIGN DETAILS WATMAUGH ROAD BRIDGE REPLACEMENT OVER SONOMA CREEK	ROAD NUMBER	09018
	BUDGET NUMBER	C11002
	FISCAL YEAR	2025-2028
	SHEET NUMBER	17
TOTAL SHEETS		39

SD-1






Watmaugh Roadway Plans - Signed FINAL

Final Audit Report

2026-01-21

Created:	2026-01-21
By:	Samuel Baumgardner-Kranz (Samuel.Baumgardner-Kranz@sonomacounty.gov)
Status:	Signed
Transaction ID:	CBJCHBCAABAAlidGmjbH1ldpqnHp3KAFBHgrkHV6Jw

"Watmaugh Roadway Plans - Signed FINAL" History

-  Document created by Samuel Baumgardner-Kranz (Samuel.Baumgardner-Kranz@sonomacounty.gov)
2026-01-21 - 7:11:41 PM GMT - IP address: 209.77.204.154
-  Document emailed to Johannes Hoevertsz (Johannes.Hoevertsz@sonomacounty.gov) for signature
2026-01-21 - 7:13:40 PM GMT
-  Email viewed by Johannes Hoevertsz (Johannes.Hoevertsz@sonomacounty.gov)
2026-01-21 - 9:06:12 PM GMT - IP address: 209.77.204.154
-  Document e-signed by Johannes Hoevertsz (Johannes.Hoevertsz@sonomacounty.gov)
Signature Date: 2026-01-21 - 9:06:42 PM GMT - Time Source: server- IP address: 209.77.204.154
-  Agreement completed.
2026-01-21 - 9:06:42 PM GMT