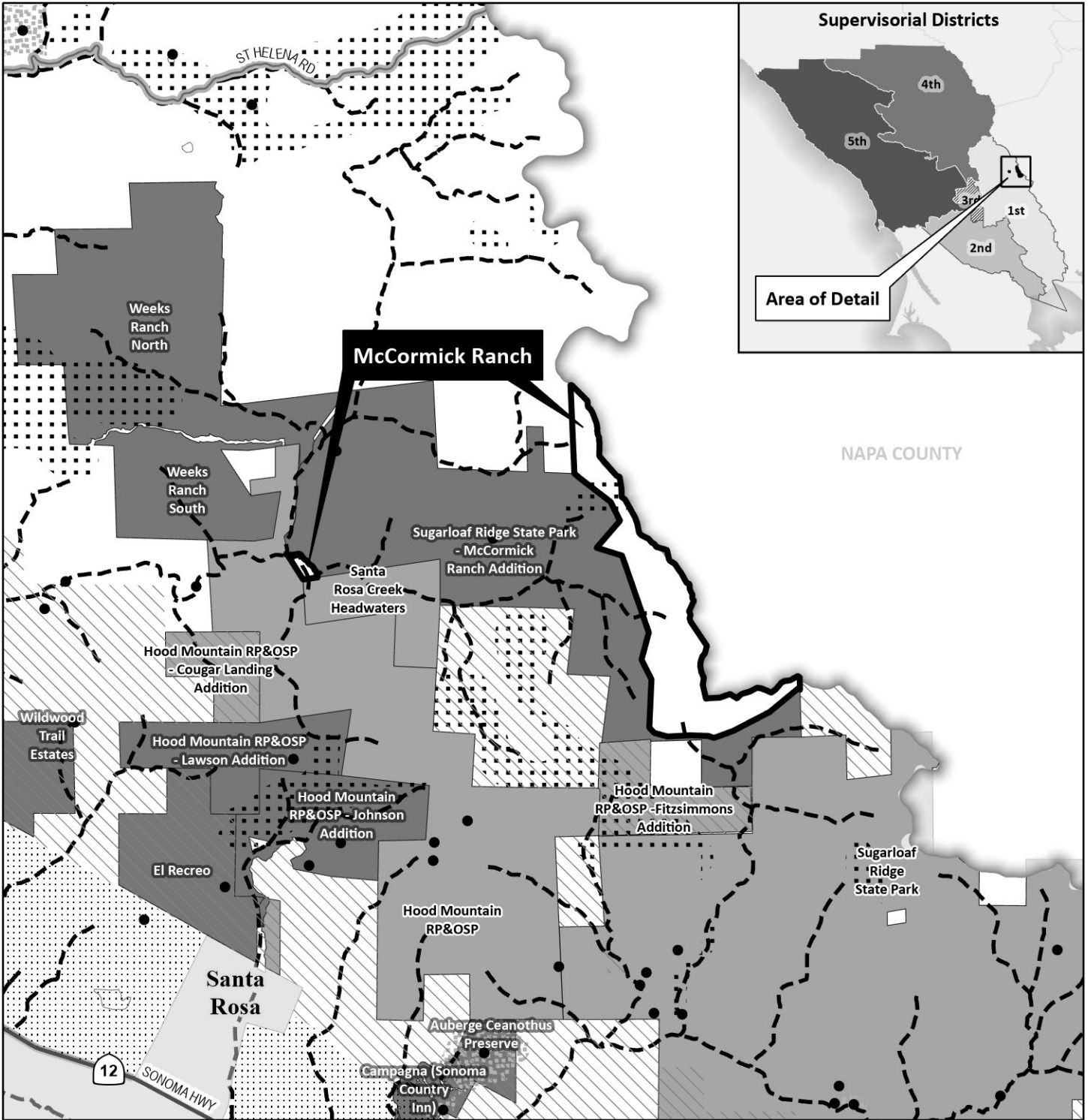
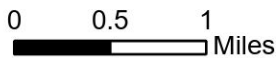


ATTACHMENT 1



**McCormick Ranch - Regional Parks**  
**LOCATION / GENERAL PLAN MAP**



Map Date: 11/17/2023  
Sources: Sonoma County GIS Group;  
Sonoma County General Plan 2020,  
Open Space and Resource  
Conservation Element.  
This map displays GIS data for illustrative  
purposes only and is not intended to  
depict definitive property boundaries or  
feature locations.



**Open Space and Resource Conservation Element**

- Easement Boundary
- Incorporated City Land
- District Holdings
- Protected Public Land
- SCENIC RESOURCES**
- Community Separator
- Scenic Landscape Unit
- Scenic Corridor
- OUTDOOR RECREATION**
- General Plan Future Park

**BIOTIC RESOURCES**

- Special Status Species Occurrences
- Special Status Species Habitat
- Potential Range of California Tiger Salamander
- Marshes and Wetlands
- Sensitive Natural Communities
- Habitat Connectivity Corridor
- Riparian Corridor