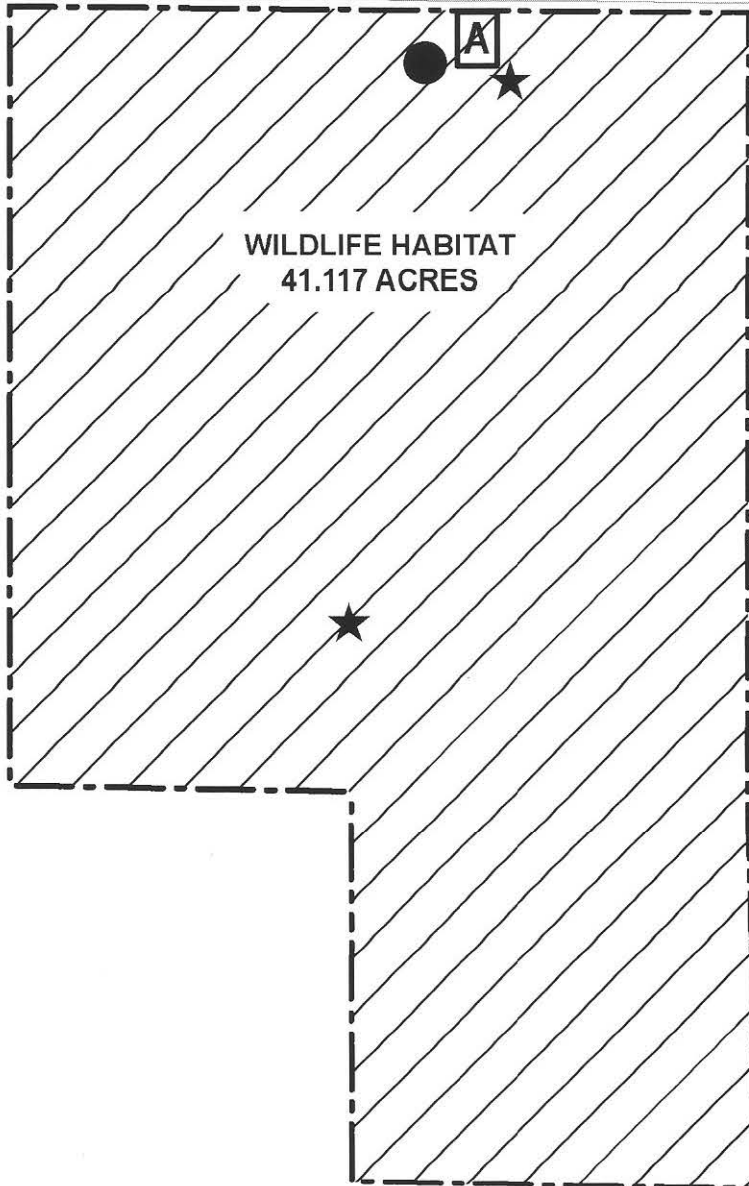


ALTON

LANE



LEGEND

-- Property Boundary

ALTON PRESERVE LLC

034-042-081

DN 2020 - 043559

41.12 AC.

Alton Lane Conservation Bank

41.117 AC.

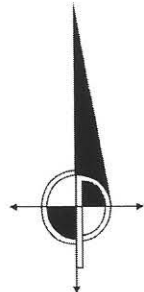
Livestock Corral

Water Trough

Pump House and Solar Panel

Total Compatible Uses

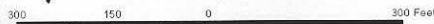
0.003 AC.



Note: Conservation area to be converted from Agricultural to Open Space Contract.



CINQUINI & PASSARINO, INC.
GEOSPATIAL SOLUTIONS
1360 N. Dutton Ave., Ste. 150 Phone: (707) 542-6268
Santa Rosa, CA. 95401 Fax: (707) 542-2106
www.cinquinipassarino.com



Job Name: **ALTON LANE AGRICULTURAL
CONSERVATION EASEMENTS**

Description: **Land Conservation Site Plan -
Conversion to Open Space Contract**

Drawn By: JS

Checked By: JMD

Scale: 1 in = 300 ft

Date: 7/9/2021

Job Number: 5872-07

Sheet: 1 OF 1