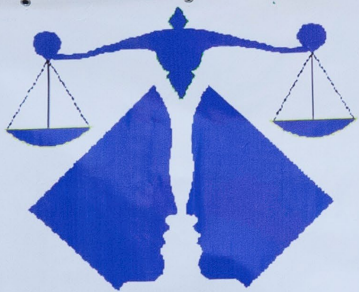


Public Defender's Office

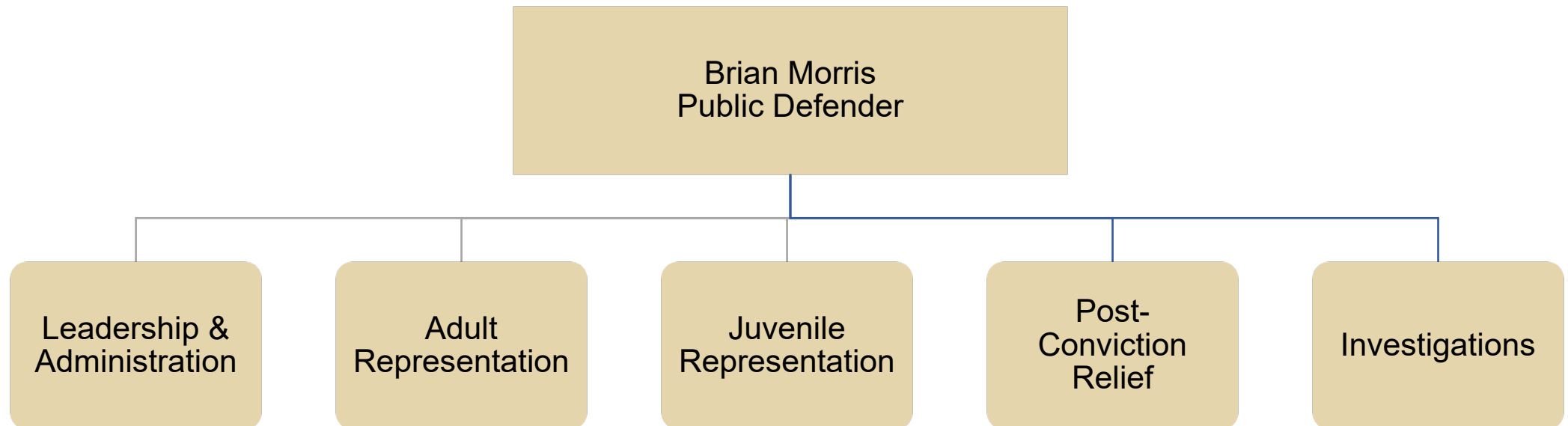
FY 2026-27 Preliminary Budget



**Sonoma County
Public Defender**

Department Overview

	Operating Expenditures	FTE
FY 2025-26 Adopted	\$19,849,900	63
FY 2026-27 Preliminary	\$19,532,006*	64
Net Change	(\$317,894)	1

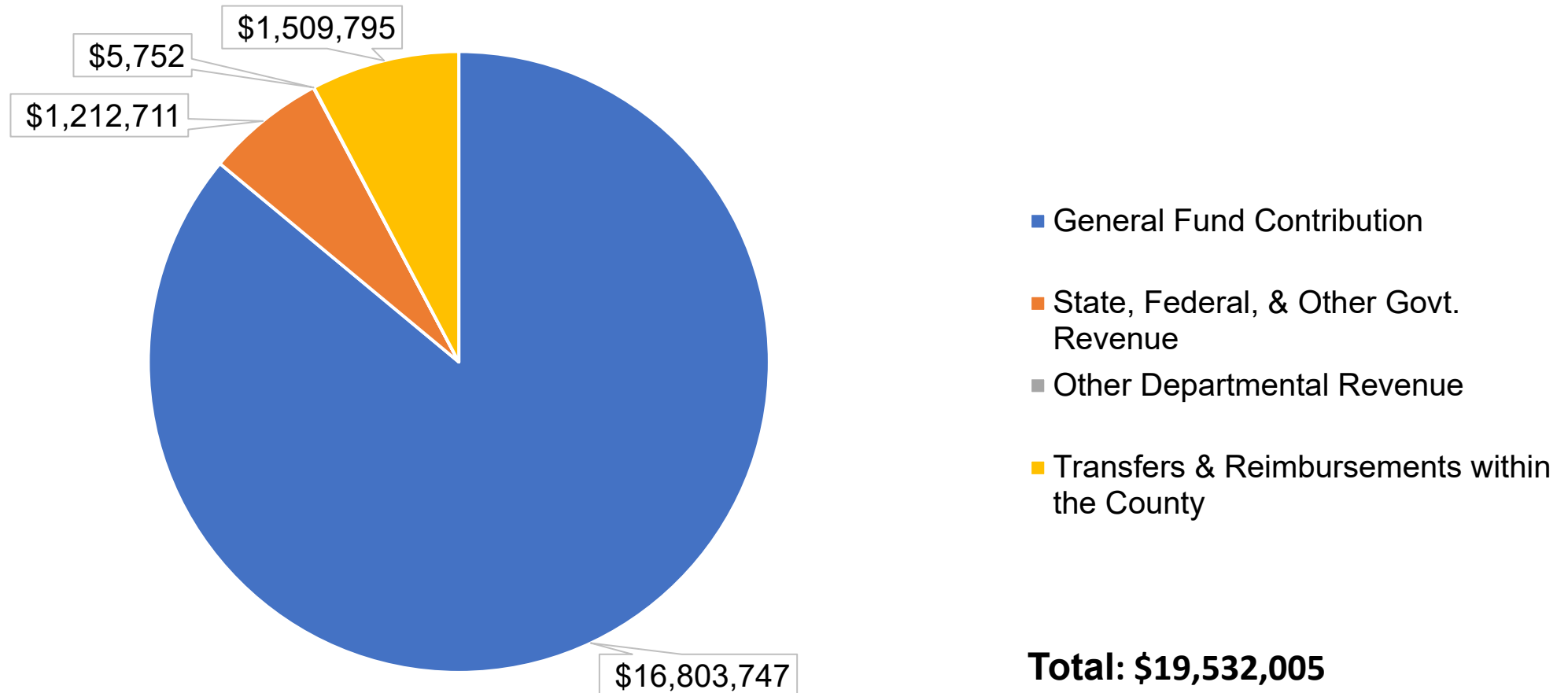


*The decrease in Preliminary Operating Expenditures for FY 26-27 is due to the expiration of two grants and the corresponding decrease in expenditures supported by those grants in FY 2025-26

Departmental Expenditures

FY 2026-27 Service Area Expenditures	Preliminary Budget	FTE
Leadership & Administration	\$3,562,181	7
Adult Representation	\$13,317,426	47
Juvenile Representation	\$708,198	2
Post-Conviction Relief	\$15,527	0
Investigations	\$1,928,674	8
Gross Departmental Expenditures	\$19,532,006	64
Less Internal Departmental Transfers	\$0	n/a
Departmental Operating Expenditures	\$19,532,006	64

Departmental Funding Sources



*Interest earned on fund balance \$5,752

Key Accomplishments FY 2025-26

- Established an Early Representation Unit to provide pre-arraignment client contact and services, supported through dedicated grant funding from the Office of the State Public Defender from March 2, 2026 through May 15, 2028.
- Established a felony incompetent to stand trial attorney position, supported through dedicated funding from the Department of Health Services through a grant from the California Department of State Hospitals through June 30, 2029.

State and Federal Budget/Policy Implications

- No anticipated impacts at time of workshops

Key Challenges / Objectives

- Technology
 - New department case management system
 - New Justice Hub to replace existing system
 - New court case management system
- New courthouse opening June 2026 will require a complete overhaul of attorney courtroom coverage plan.

Program Change Requests

- Convert 1.0 FTE Time-Limited Deputy Public Defender to Permanent to support the Adult Representation Unit (\$376,628 ongoing General Fund)
- Extend 1.0 FTE Time-Limited Deputy Public Defender for 1 year to support both the Post Conviction Relief and Adult Representation units (\$351,750 one-time General Fund)
- Extend Extra-Help Removal Defense Attorney for 1 year (\$123,895 one-time General Fund)