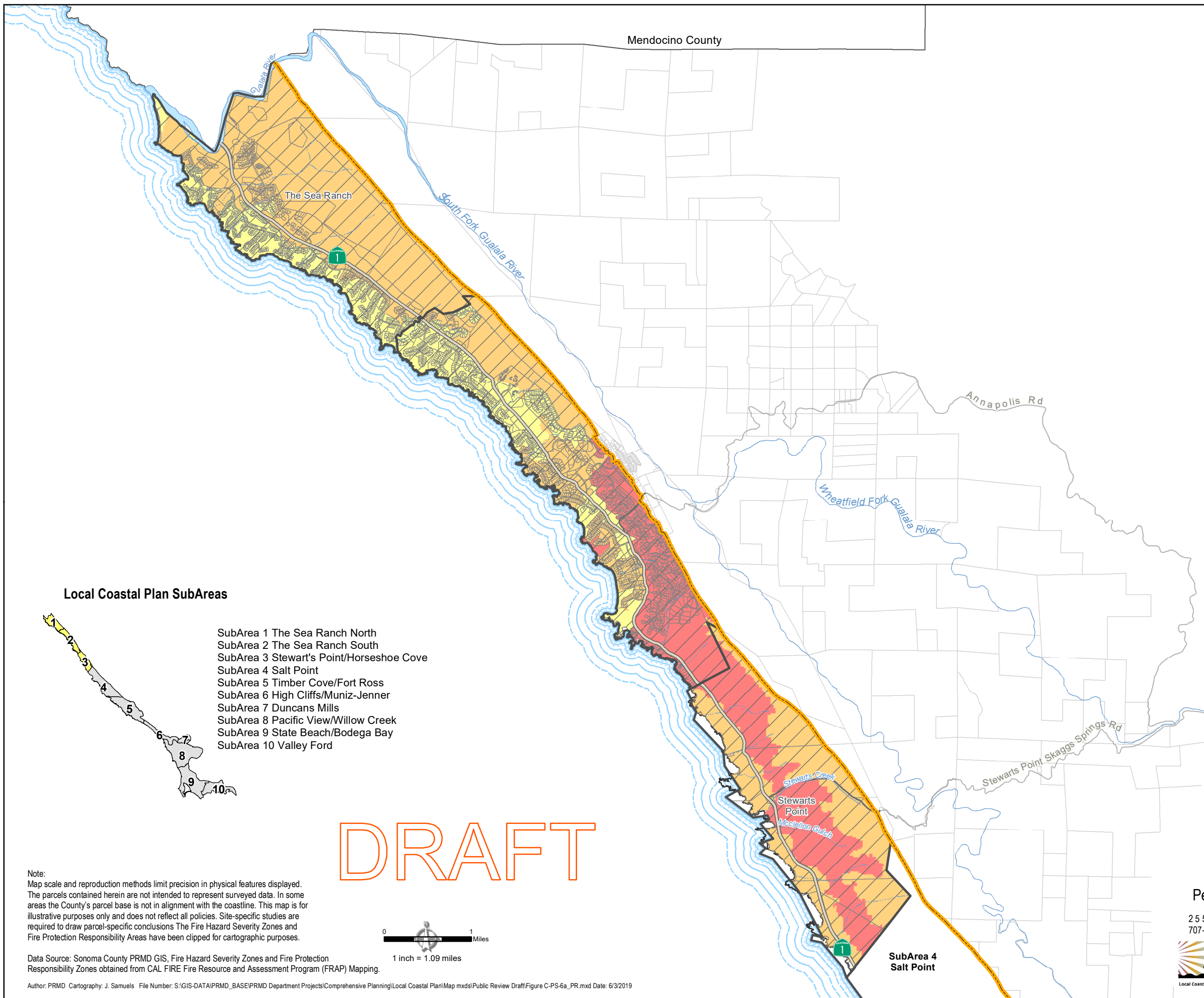


Sonoma County Local Coastal Plan Wildland Fire Threat



Fire Hazard Severity Zones

- Very High ■
- High ■
- Moderate ■

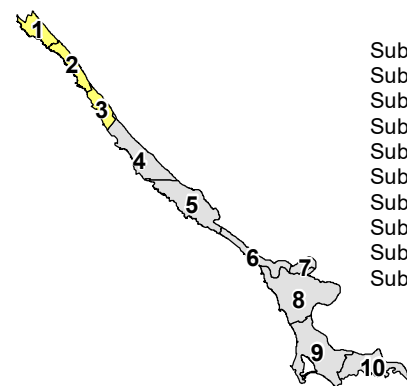
Fire Protection Responsibility Areas

- SRA

Base Map Layers

- Coastal SubArea
- Parcel
- Coastal Zone Boundary
- Natural Coastline
- Highway
- Road
- Perennial Stream
- Intermittent Stream

Local Coastal Plan SubAreas



- SubArea 1 The Sea Ranch North
- SubArea 2 The Sea Ranch South
- SubArea 3 Stewart's Point/Horseshoe Cove
- SubArea 4 Salt Point
- SubArea 5 Timber Cove/Fort Ross
- SubArea 6 High Cliffs/Muniz-Jenner
- SubArea 7 Duncans Mills
- SubArea 8 Pacific View/Willow Creek
- SubArea 9 State Beach/Bodega Bay
- SubArea 10 Valley Ford

DRAFT

Note:
Map scale and reproduction methods limit precision in physical features displayed. The parcels contained herein are not intended to represent surveyed data. In some areas the County's parcel base is not in alignment with the coastline. This map is for illustrative purposes only and does not reflect all policies. Site-specific studies are required to draw parcel-specific conclusions. The Fire Hazard Severity Zones and Fire Protection Responsibility Areas have been clipped for cartographic purposes.



Data Source: Sonoma County PRMD GIS, Fire Hazard Severity Zones and Fire Protection Responsibility Zones obtained from CAL FIRE Fire Resource and Assessment Program (FRAP) Mapping.

Author: PRMD Cartography: J. Samuels File Number: S:\GIS-DATA\PRMD_BASE\PRMD Department Projects\Comprehensive Planning\Local Coastal Plan\Map mxd\Public Review Draft\Figure C-PS-6a_PR.mxd Date: 6/3/2019

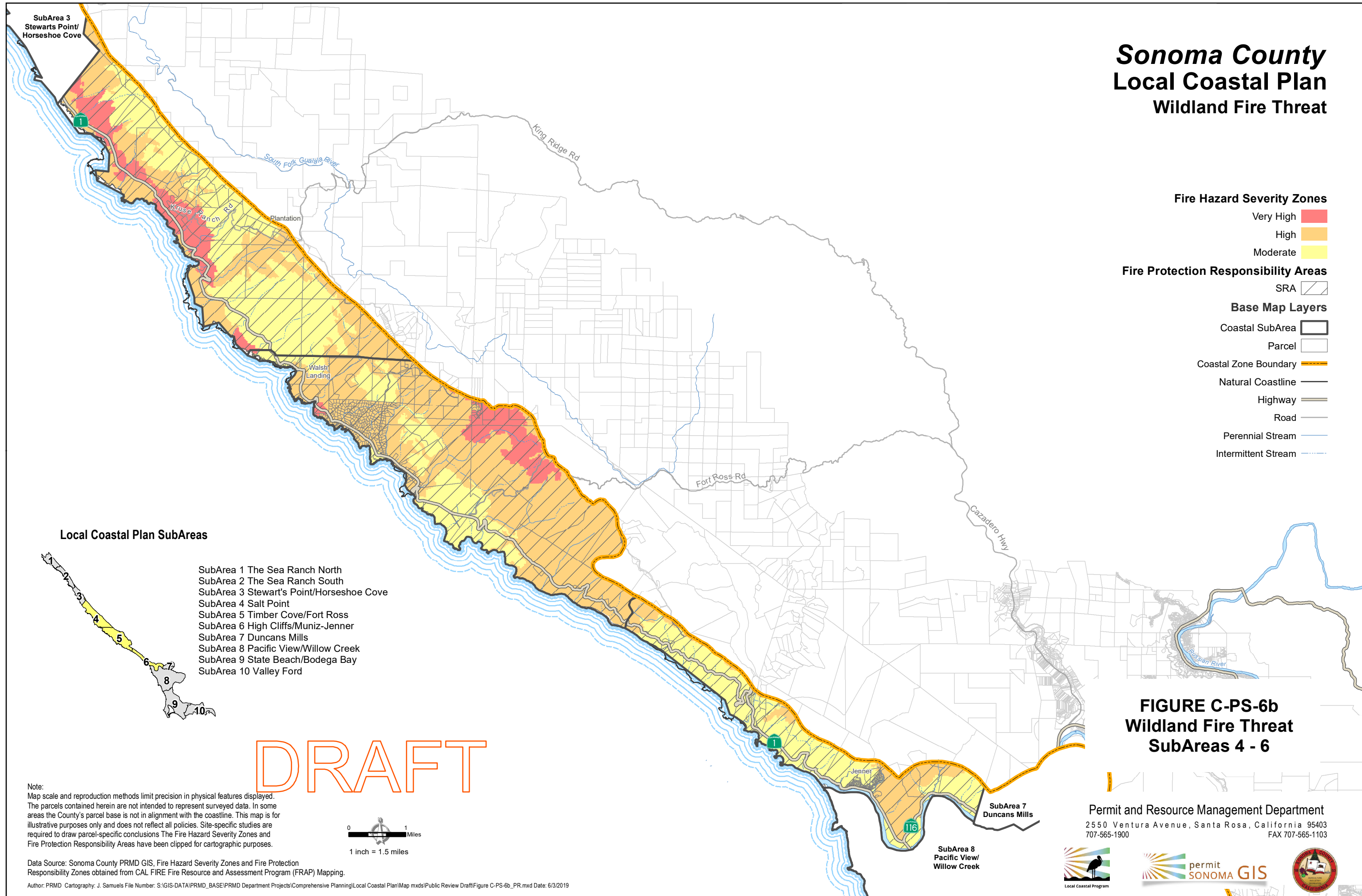
**FIGURE C-PS-6a
Wildland Fire Threat
SubAreas 1 - 3**

Permit and Resource Management Department

2550 Ventura Avenue, Santa Rosa, California 95403
707-565-1900 FAX 707-565-1103



Sonoma County Local Coastal Plan Wildland Fire Threat



Fire Hazard Severity Zones

- Very High ■
- High ■
- Moderate ■

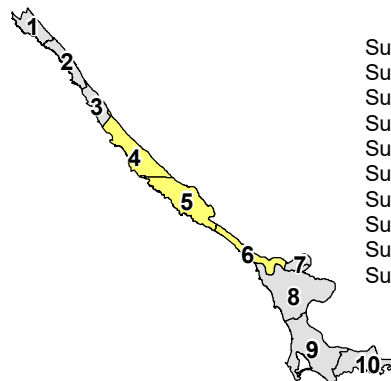
Fire Protection Responsibility Areas

- SRA

Base Map Layers

- Coastal SubArea
- Parcel
- Coastal Zone Boundary
- Natural Coastline
- Highway
- Road
- Perennial Stream
- Intermittent Stream

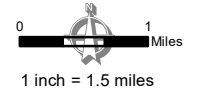
Local Coastal Plan SubAreas



- SubArea 1 The Sea Ranch North
- SubArea 2 The Sea Ranch South
- SubArea 3 Stewart's Point/Horseshoe Cove
- SubArea 4 Salt Point
- SubArea 5 Timber Cove/Fort Ross
- SubArea 6 High Cliffs/Muniz-Jenner
- SubArea 7 Duncans Mills
- SubArea 8 Pacific View/Willow Creek
- SubArea 9 State Beach/Bodega Bay
- SubArea 10 Valley Ford

DRAFT

Note:
Map scale and reproduction methods limit precision in physical features displayed. The parcels contained herein are not intended to represent surveyed data. In some areas the County's parcel base is not in alignment with the coastline. This map is for illustrative purposes only and does not reflect all policies. Site-specific studies are required to draw parcel-specific conclusions. The Fire Hazard Severity Zones and Fire Protection Responsibility Areas have been clipped for cartographic purposes.



Data Source: Sonoma County PRMD GIS, Fire Hazard Severity Zones and Fire Protection Responsibility Zones obtained from CAL FIRE Fire Resource and Assessment Program (FRAP) Mapping.
Author: PRMD Cartography: J. Samuels File Number: S:\GIS-DATA\PRMD_BASE\PRMD Department Projects\Comprehensive Planning\Local Coastal Plan\Map mxd\Public Review Draft\Figure C-PS-6b_PR.mxd Date: 6/3/2019

**FIGURE C-PS-6b
Wildland Fire Threat
SubAreas 4 - 6**

Permit and Resource Management Department
2550 Ventura Avenue, Santa Rosa, California 95403
707-565-1900 FAX 707-565-1103



Sonoma County Local Coastal Plan Wildland Fire Threat

Fire Hazard Severity Zones

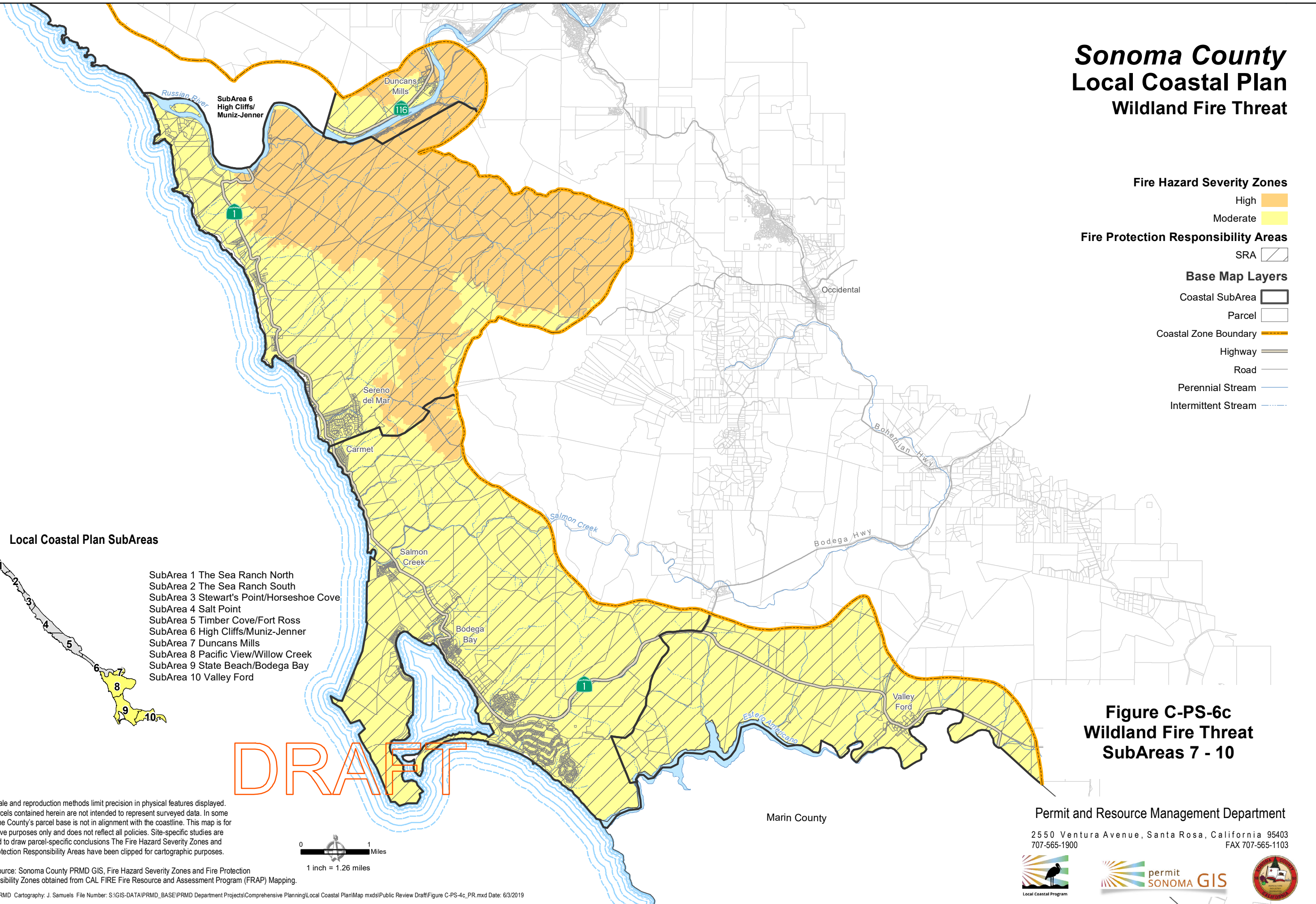
- High
- Moderate

Fire Protection Responsibility Areas

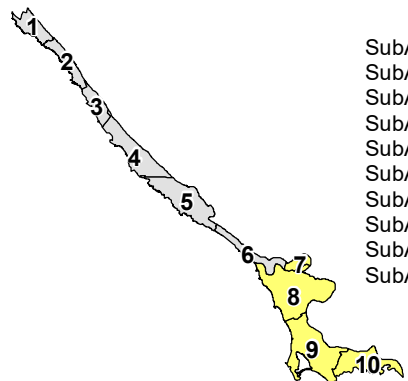
- SRA

Base Map Layers

- Coastal SubArea
- Parcel
- Coastal Zone Boundary
- Highway
- Road
- Perennial Stream
- Intermittent Stream



Local Coastal Plan SubAreas



- SubArea 1 The Sea Ranch North
- SubArea 2 The Sea Ranch South
- SubArea 3 Stewart's Point/Horseshoe Cove
- SubArea 4 Salt Point
- SubArea 5 Timber Cove/Fort Ross
- SubArea 6 High Cliffs/Muniz-Jenner
- SubArea 7 Duncans Mills
- SubArea 8 Pacific View/Willow Creek
- SubArea 9 State Beach/Bodega Bay
- SubArea 10 Valley Ford

**Figure C-PS-6c
Wildland Fire Threat
SubAreas 7 - 10**

Note:
Map scale and reproduction methods limit precision in physical features displayed. The parcels contained herein are not intended to represent surveyed data. In some areas the County's parcel base is not in alignment with the coastline. This map is for illustrative purposes only and does not reflect all policies. Site-specific studies are required to draw parcel-specific conclusions. The Fire Hazard Severity Zones and Fire Protection Responsibility Areas have been clipped for cartographic purposes.



Data Source: Sonoma County PRMD GIS, Fire Hazard Severity Zones and Fire Protection Responsibility Zones obtained from CAL FIRE Fire Resource and Assessment Program (FRAP) Mapping.

Author: PRMD Cartography: J. Samuels File Number: S:\GIS-DATA\PRMD_BASE\PRMD Department\Projects\Comprehensive Planning\Local Coastal Plan\Map mxd\Public Review Draft\Figure C-PS-6c_PR.mxd Date: 6/3/2019

Marin County

Permit and Resource Management Department

2550 Ventura Avenue, Santa Rosa, California 95403
707-565-1900 FAX 707-565-1103

