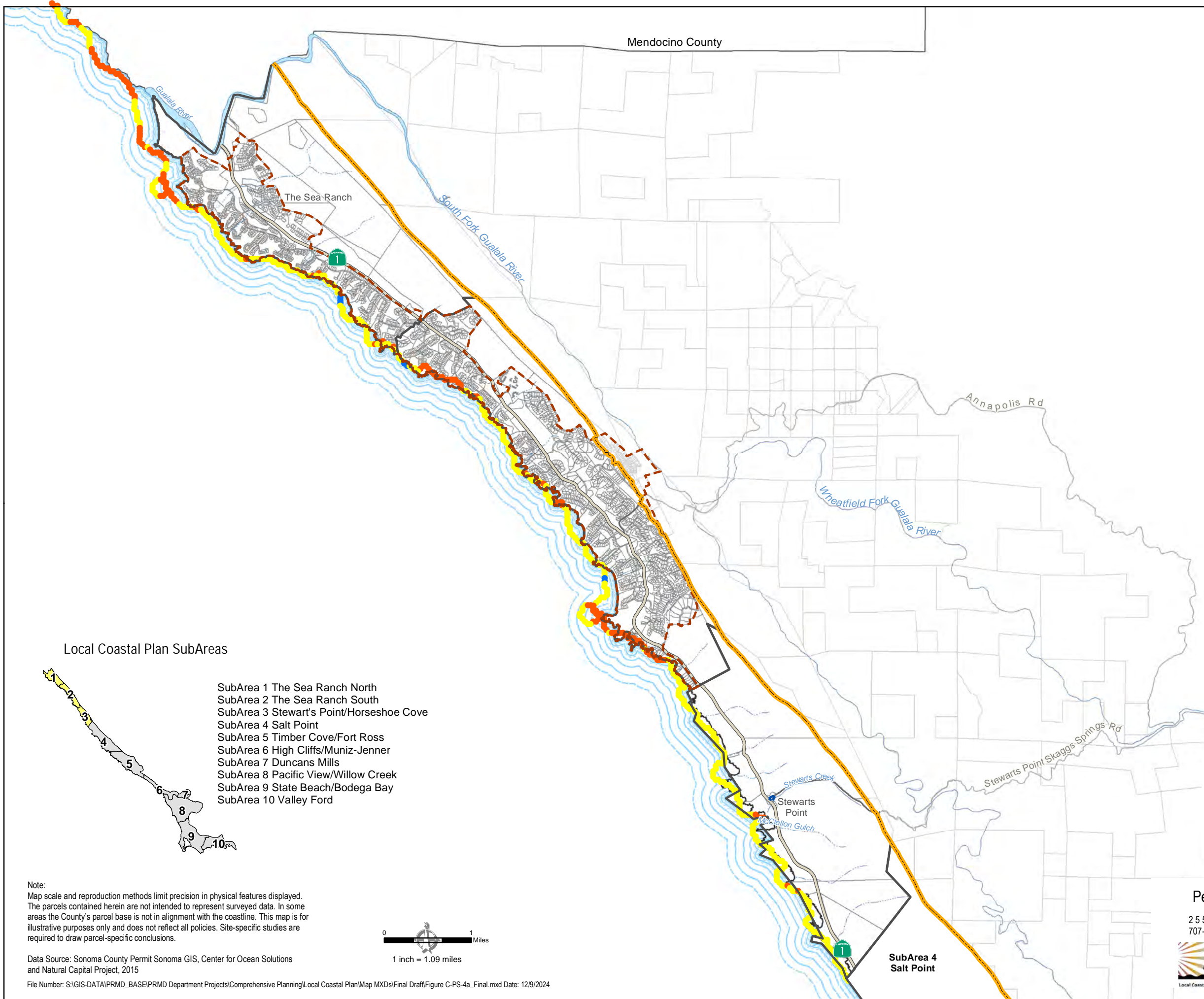


Sonoma County Local Coastal Plan Coastal Exposure Threat



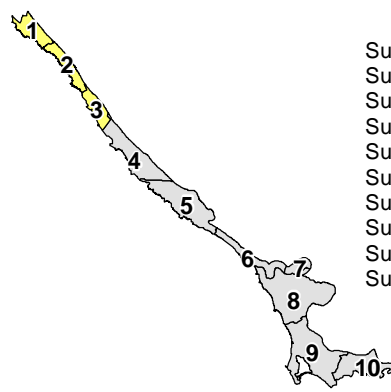
Exposure Levels

- Highest Exposure ●
- Medium Exposure ●
- Lowest Exposure ●

Base Map Layers

- Coastal SubArea
- Rural Community
- Urban Service Area
- Parcel
- Coastal Zone Boundary
- Natural Coastline
- Highway
- Road
- Perennial Stream
- Intermittent Stream

Local Coastal Plan SubAreas



- SubArea 1 The Sea Ranch North
- SubArea 2 The Sea Ranch South
- SubArea 3 Stewart's Point/Horseshoe Cove
- SubArea 4 Salt Point
- SubArea 5 Timber Cove/Fort Ross
- SubArea 6 High Cliffs/Muniz-Jenner
- SubArea 7 Duncans Mills
- SubArea 8 Pacific View/Willow Creek
- SubArea 9 State Beach/Bodega Bay
- SubArea 10 Valley Ford

**FIGURE C-PS-4a
Coastal Exposure Threat
SubAreas 1 - 3**

Note:
Map scale and reproduction methods limit precision in physical features displayed. The parcels contained herein are not intended to represent surveyed data. In some areas the County's parcel base is not in alignment with the coastline. This map is for illustrative purposes only and does not reflect all policies. Site-specific studies are required to draw parcel-specific conclusions.

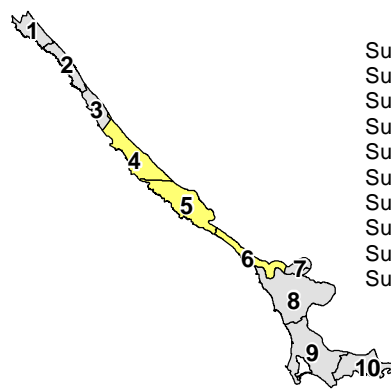


Permit and Resource Management Department
2550 Ventura Avenue, Santa Rosa, California 95403
707-565-1900 FAX 707-565-1103

Sonoma County Local Coastal Plan Coastal Exposure Threat

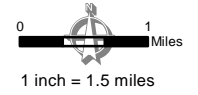
- Exposure Levels**
- Highest Exposure ●
 - Medium Exposure ●
 - Lowest Exposure ●
- Base Map Layers**
- Coastal SubArea [Solid Line]
 - Rural Community [Dashed Line]
 - Parcel [Thin Grey Line]
 - Coastal Zone Boundary [Thick Orange Line]
 - Natural Coastline [Thin Black Line]
 - Highway [Thick Grey Line]
 - Road [Thin Grey Line]
 - Perennial Stream [Blue Line]
 - Intermittent Stream [Dotted Blue Line]

Local Coastal Plan SubAreas



- SubArea 1 The Sea Ranch North
- SubArea 2 The Sea Ranch South
- SubArea 3 Stewart's Point/Horseshoe Cove
- SubArea 4 Salt Point
- SubArea 5 Timber Cove/Fort Ross
- SubArea 6 High Cliffs/Muniz-Jenner
- SubArea 7 Duncans Mills
- SubArea 8 Pacific View/Willow Creek
- SubArea 9 State Beach/Bodega Bay
- SubArea 10 Valley Ford

Note:
Map scale and reproduction methods limit precision in physical features displayed. The parcels contained herein are not intended to represent surveyed data. In some areas the County's parcel base is not in alignment with the coastline. This map is for illustrative purposes only and does not reflect all policies. Site-specific studies are required to draw parcel-specific conclusions.



Data Source: Sonoma County Permit Sonoma GIS, Center for Ocean Solutions and Natural Capital Project, 2015
File Number: S:\GIS-DATA\PRMD_BASE\PRMD Department Projects\Comprehensive Planning\Local Coastal Plan\Map MXDs\Final Dratt\Figure C-PS-4b_Final.mxd Date: 12/9/2024

**Figure C-PS-4b
Coastal Exposure Threat
SubAreas 4 - 6**

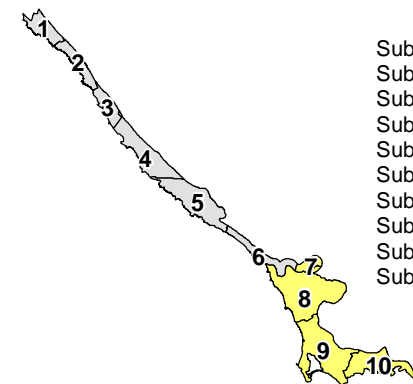
Permit and Resource Management Department
2550 Ventura Avenue, Santa Rosa, California 95403
707-565-1900 FAX 707-565-1103



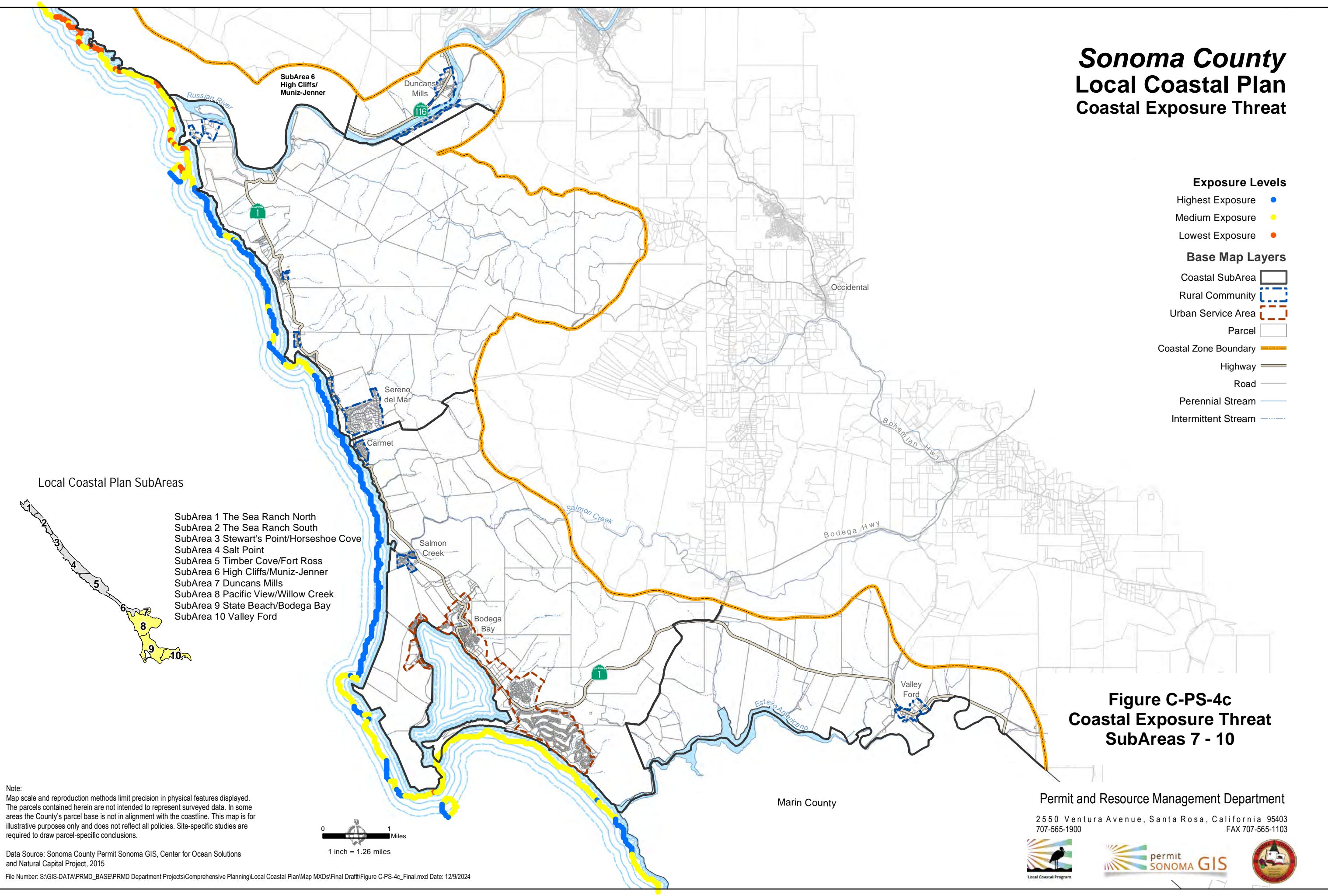
Sonoma County Local Coastal Plan Coastal Exposure Threat

- Exposure Levels**
- Highest Exposure ●
 - Medium Exposure ●
 - Lowest Exposure ●
- Base Map Layers**
- Coastal SubArea
 - Rural Community
 - Urban Service Area
 - Parcel
 - Coastal Zone Boundary
 - Highway
 - Road
 - Perennial Stream
 - Intermittent Stream

Local Coastal Plan SubAreas



- SubArea 1 The Sea Ranch North
- SubArea 2 The Sea Ranch South
- SubArea 3 Stewart's Point/Horseshoe Cove
- SubArea 4 Salt Point
- SubArea 5 Timber Cove/Fort Ross
- SubArea 6 High Cliffs/Muniz-Jenner
- SubArea 7 Duncans Mills
- SubArea 8 Pacific View/Willow Creek
- SubArea 9 State Beach/Bodega Bay
- SubArea 10 Valley Ford



**Figure C-PS-4c
Coastal Exposure Threat
SubAreas 7 - 10**

Note:
Map scale and reproduction methods limit precision in physical features displayed. The parcels contained herein are not intended to represent surveyed data. In some areas the County's parcel base is not in alignment with the coastline. This map is for illustrative purposes only and does not reflect all policies. Site-specific studies are required to draw parcel-specific conclusions.

