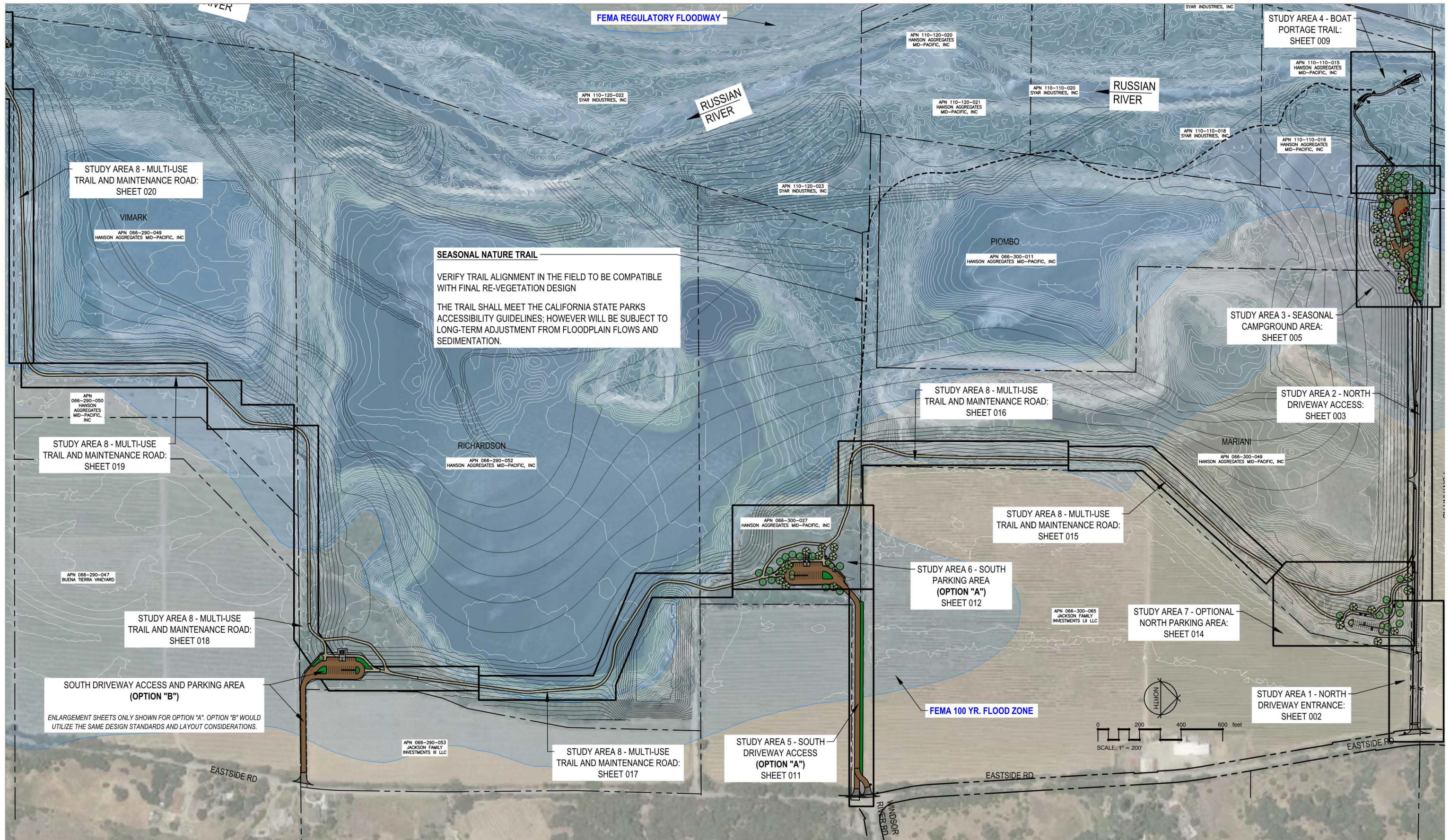


PROJECT OVERVIEW: KEY MAP



HANSON RUSSIAN RIVER ACCESS AND TRAIL PROJECT 001

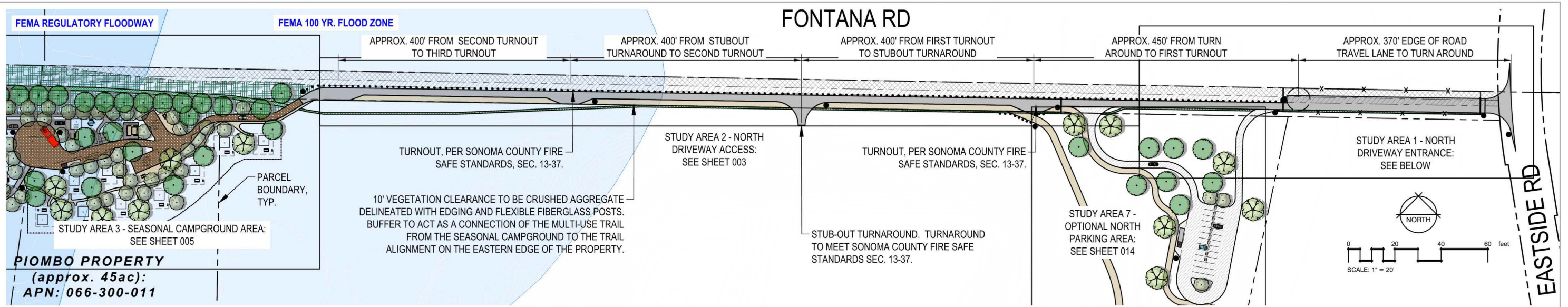
Sonoma County, California



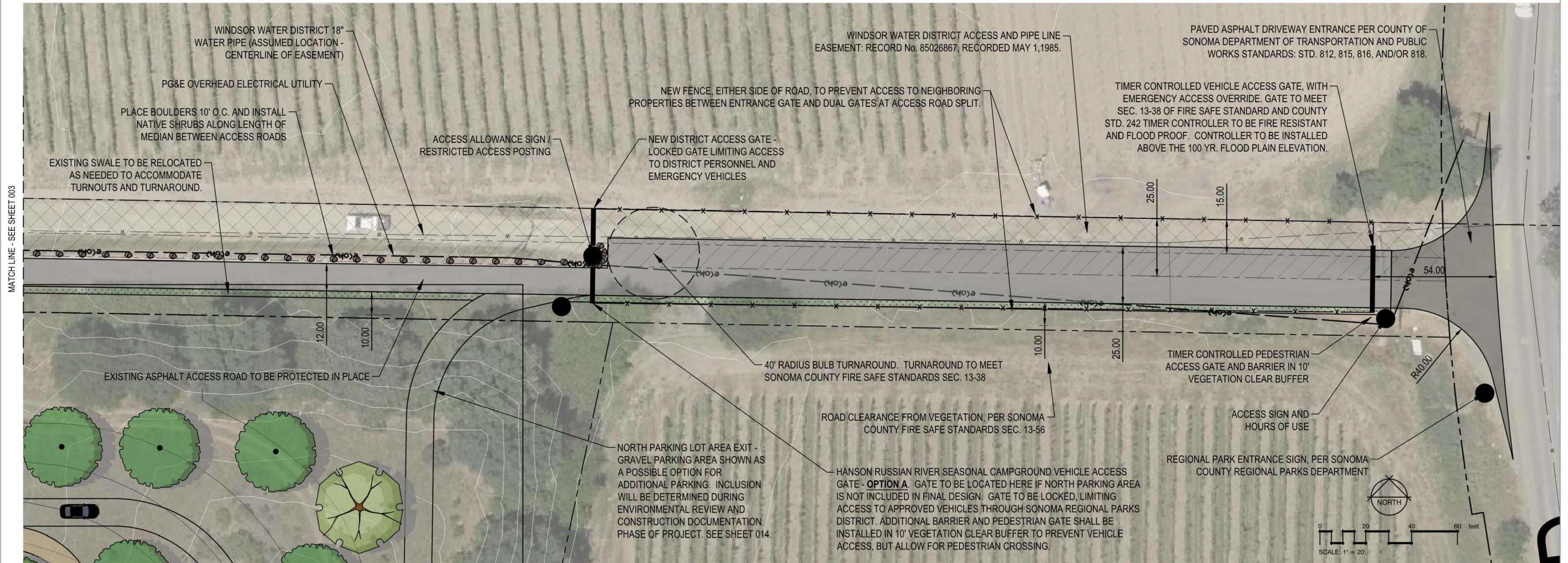
2235 Mercury Way, Suite 150
 Santa Rosa, CA 95407-5472 USA
 T 1 707-523-1010 W www.ghd.com

GHD Inc. Oct. 26, 2021 12559542_LA-CONCEPT.dwg

STUDY AREA 1: NORTH DRIVEWAY ENTRANCE



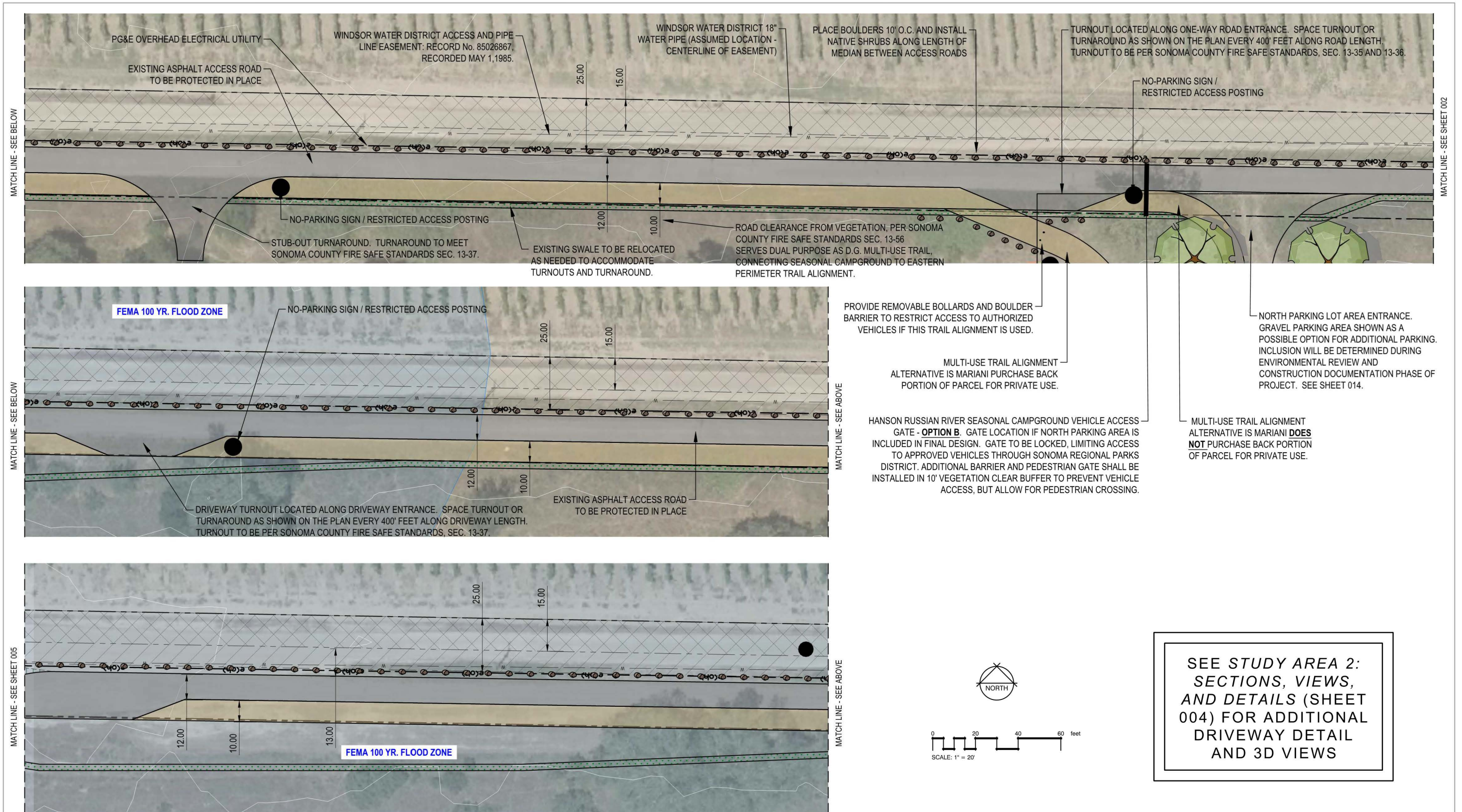
NORTH DRIVEWAY ACCESS AND SEASONAL CAMPGROUND KEY MAP / LAYOUT



HANSON RUSSIAN RIVER ACCESS AND TRAIL PROJECT 002

Sonoma County, California

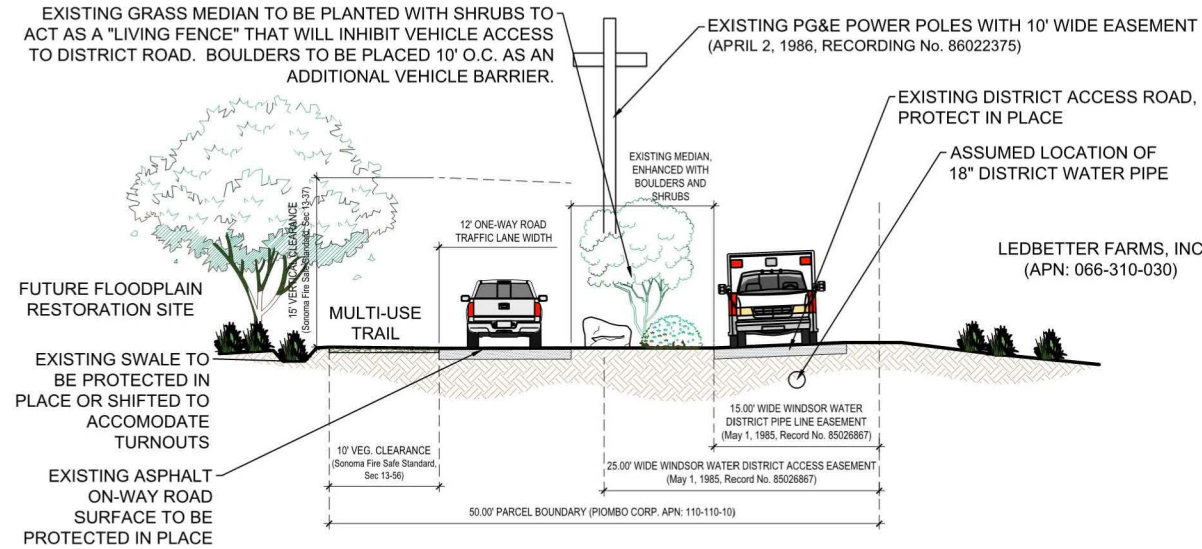
STUDY AREA 2: NORTH DRIVEWAY ACCESS



HANSON RUSSIAN RIVER ACCESS AND TRAIL PROJECT 003

Sonoma County, California

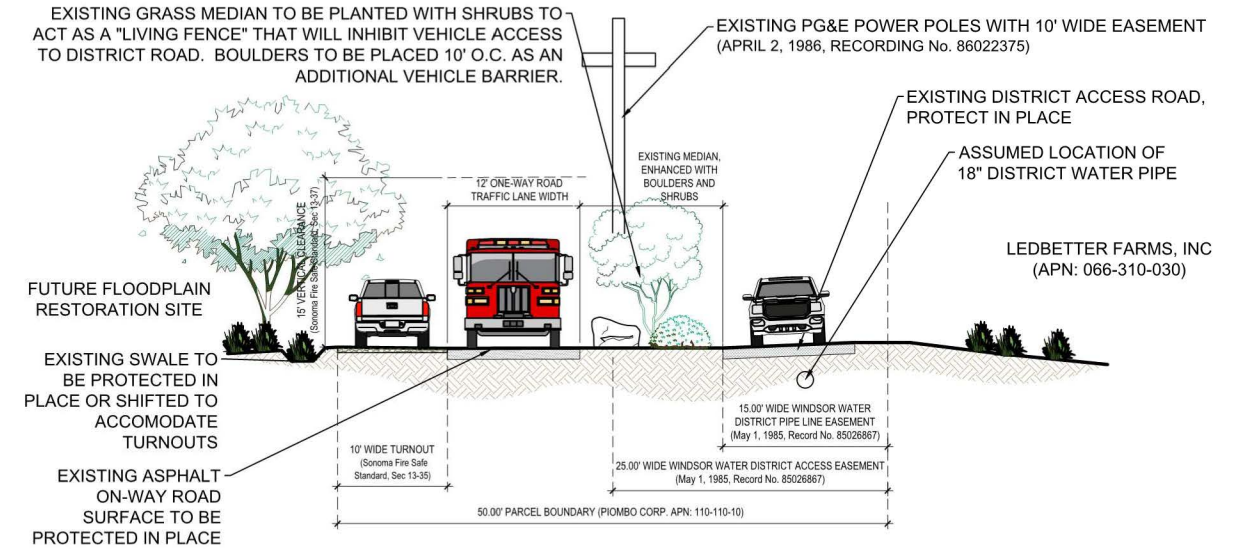
STUDY AREA 2: NORTH DRIVEWAY ACCESS - SECTIONS, VIEWS, AND DETAILS



1 NORTH ONE-WAY ROAD ACCESS - TYPICAL CROSS SECTION
1/8" = 1'-0"

P-HA-08

NORTH ONE-WAY ROAD TYPICAL CROSS SECTION



2 NORTH ONE-WAY ROAD TURNOUT - TYPICAL CROSS SECTION
1/8" = 1'-0"

P-HA-09

NORTH ONE-WAY ROAD TURNOUT TYPICAL CROSS SECTION

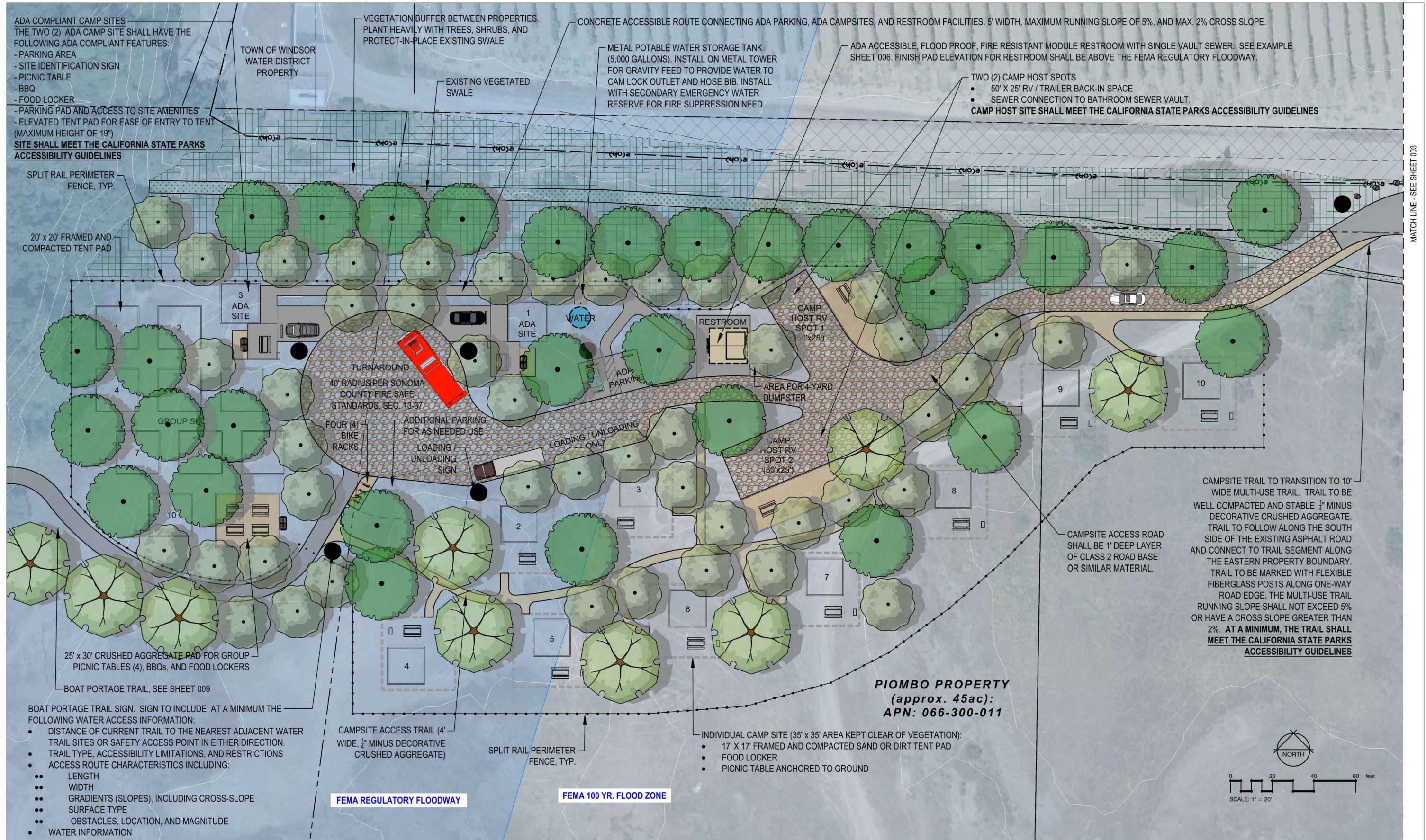


DRIVEWAY ACCESS SEPARATION VISUALIZATION



DRIVEWAY TURNOUT VISUALIZATION

STUDY AREA 3: SEASONAL CAMPGROUND



HANSON RUSSIAN RIVER ACCESS AND TRAIL PROJECT 005

Sonoma County, California

STUDY AREA 3: SEASONAL CAMPGROUND - 3D VISUALIZATIONS



SEASONAL CAMPGROUND: BIRD'S EYE VIEW



SEASONAL CAMPGROUND ENTRY



RV / HOST CAMP SITE



RESTROOM

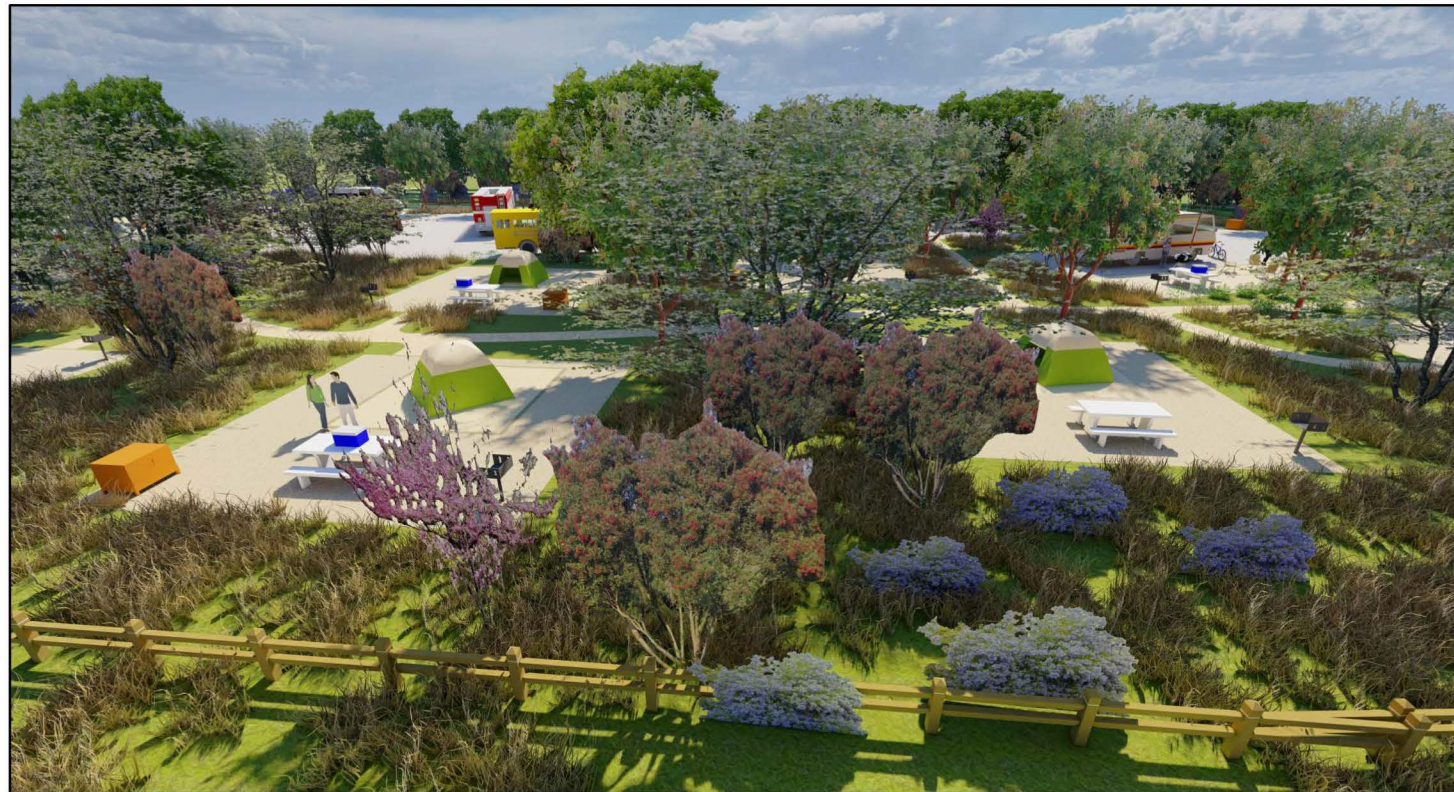
STUDY AREA 3: SEASONAL CAMPGROUND - 3D VISUALIZATIONS



VEHICLE TURNAROUND & ADA CAMP SITE



NON-MOTORIZED BOAT PORTAGE TRAIL ENTRY

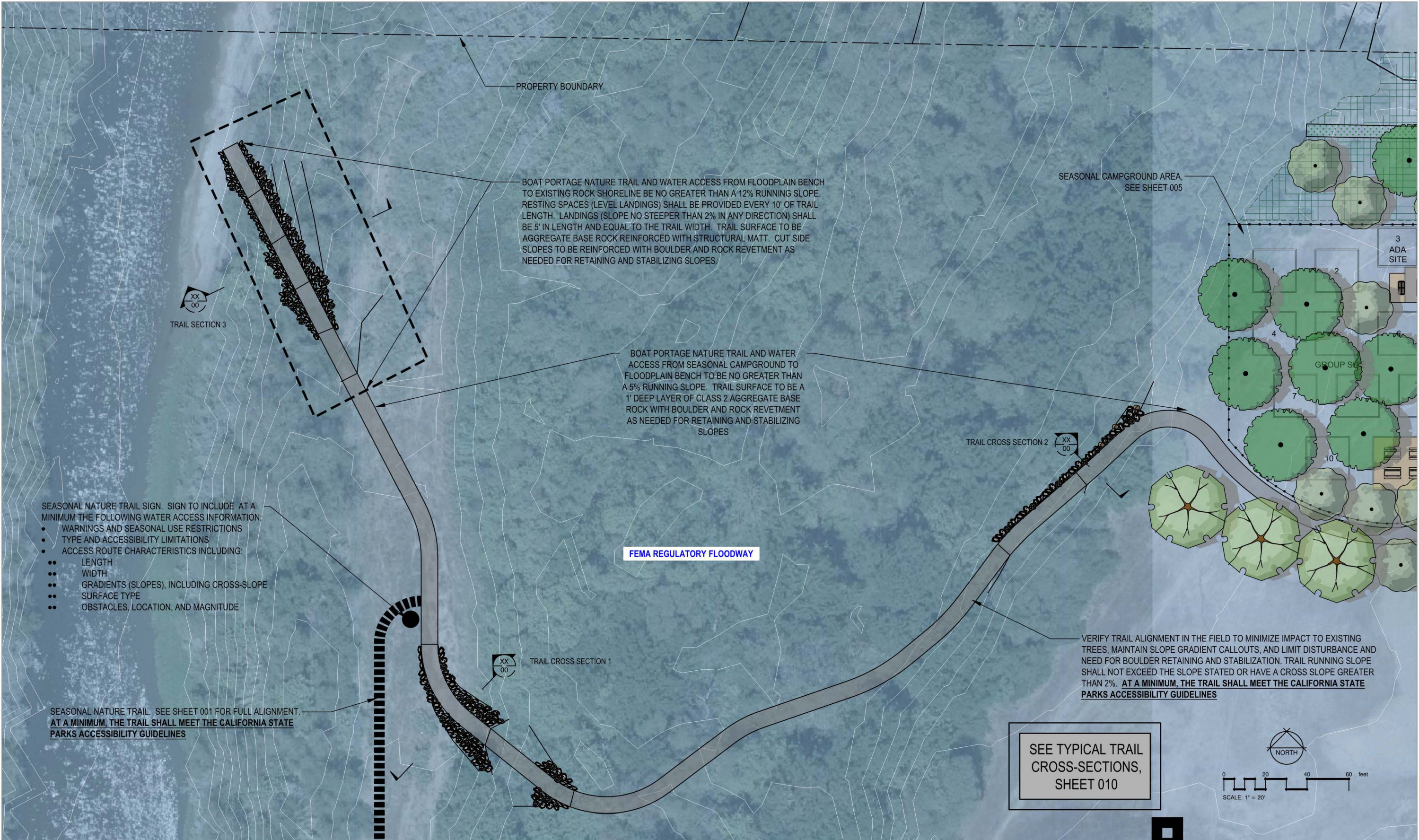


INDIVIDUAL CAMPSITES



GROUP AND ADA CAMPSITE

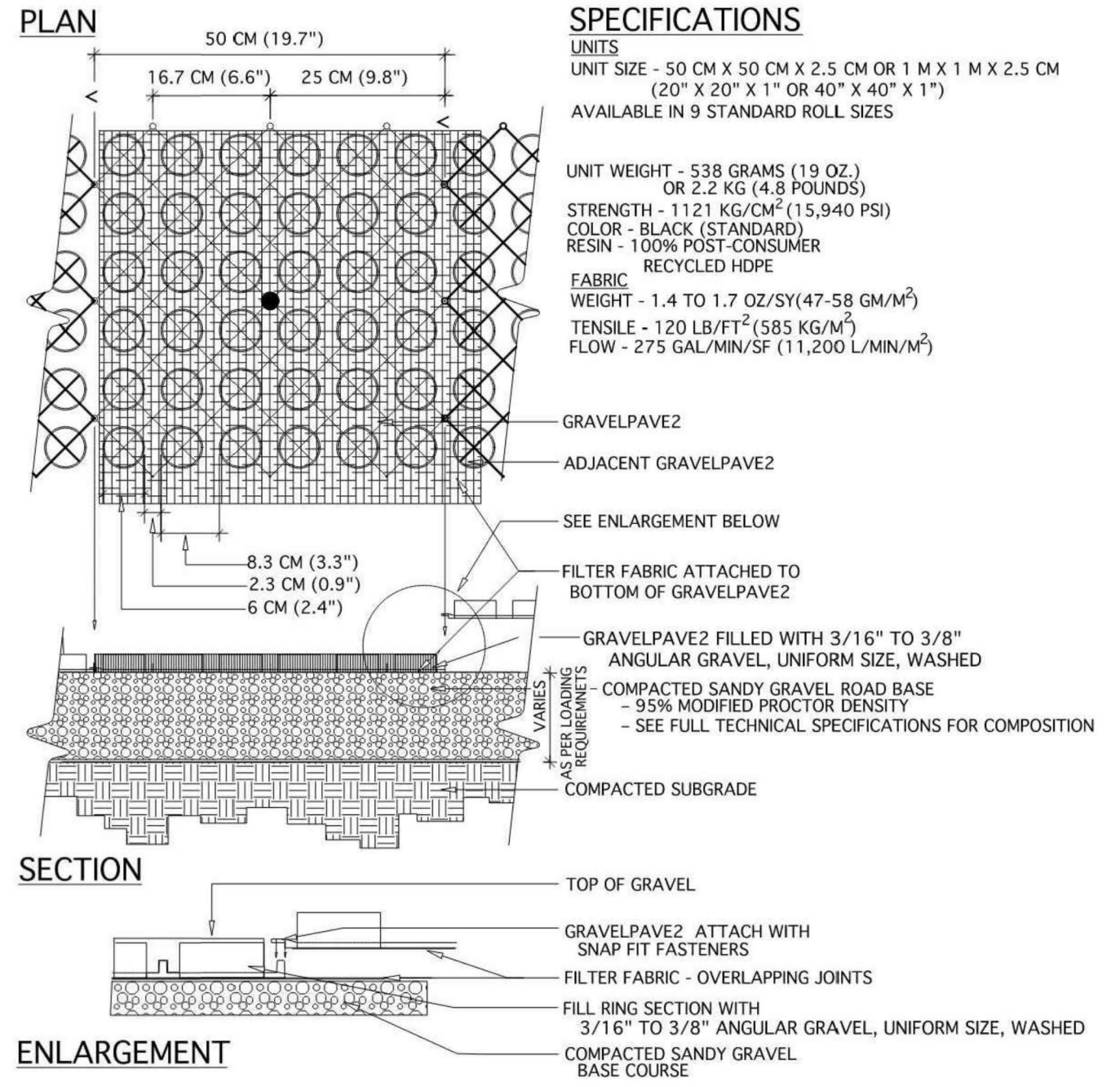
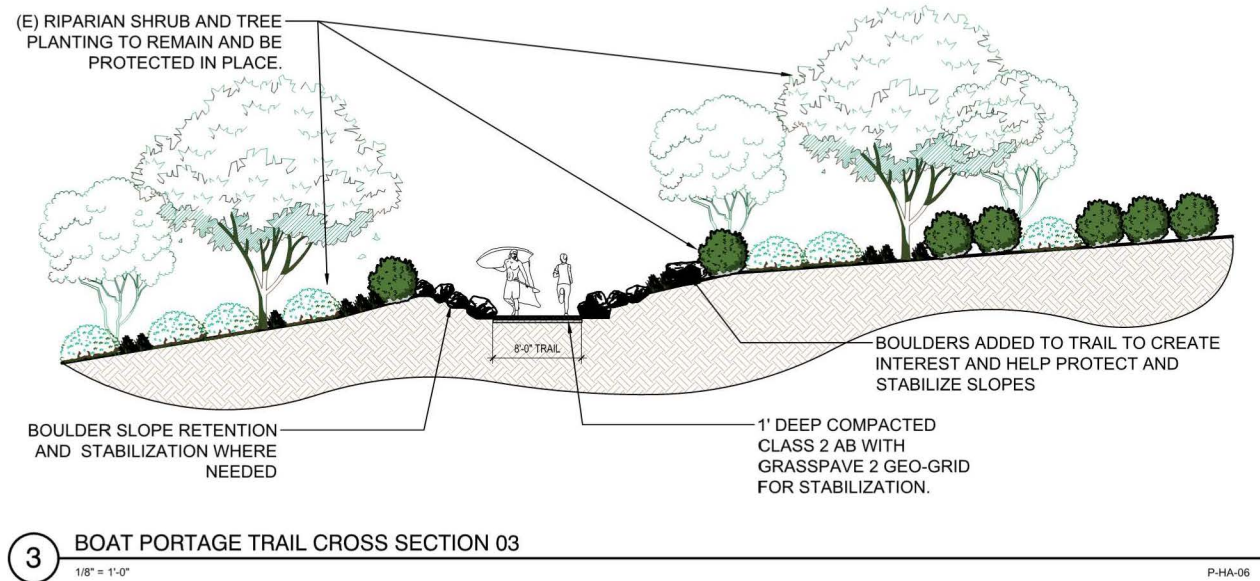
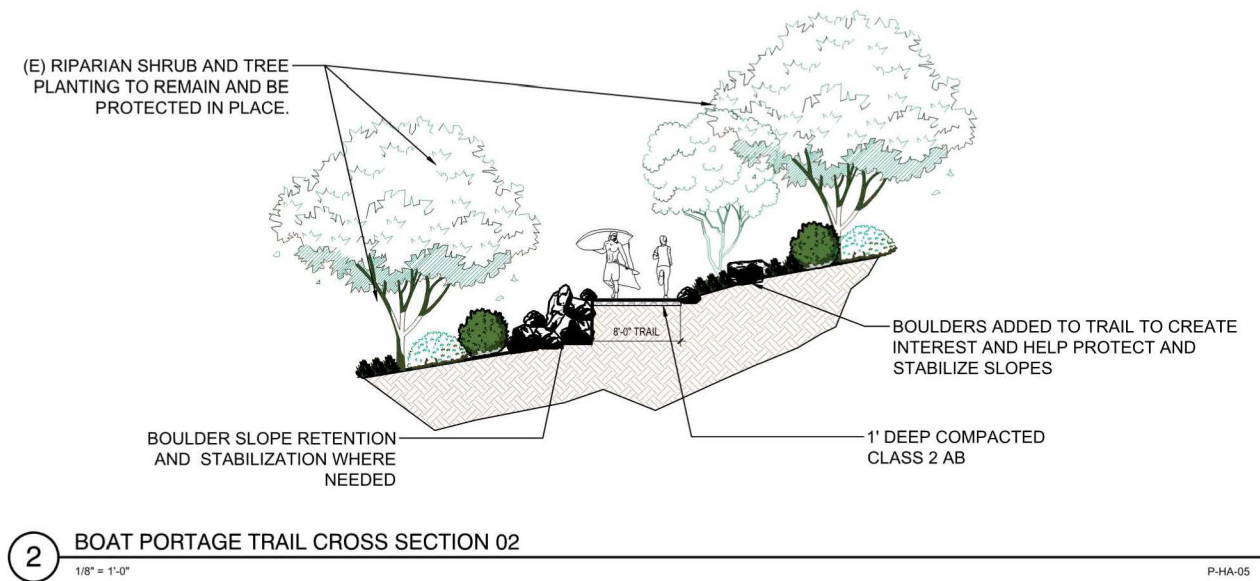
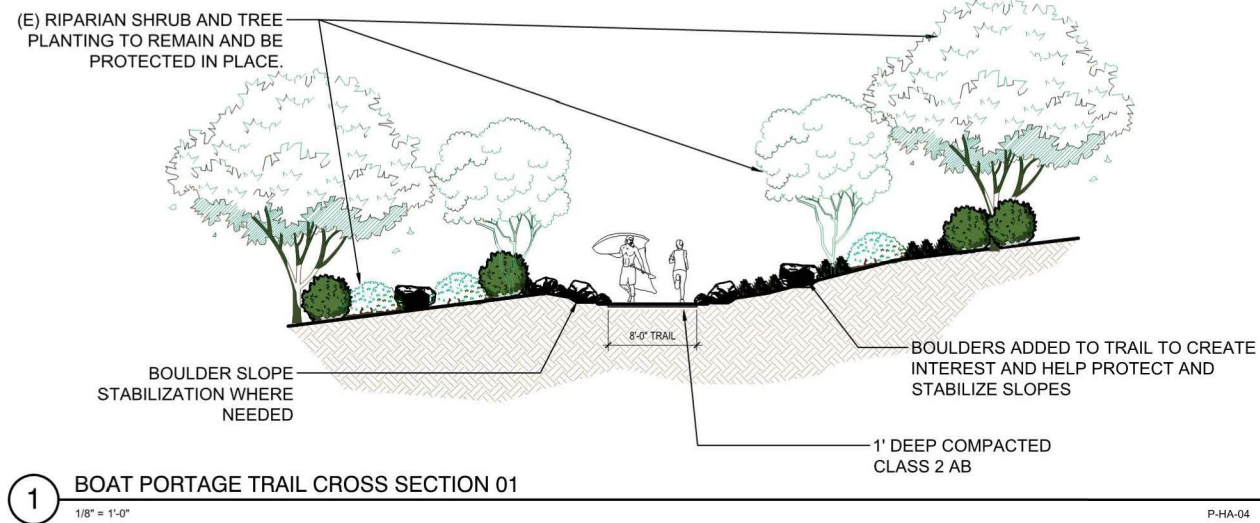
STUDY AREA 4: BOAT PORTAGE TRAIL



HANSON RUSSIAN RIVER ACCESS AND TRAIL PROJECT 009

Sonoma County, California

STUDY AREA 4: BOAT PORTAGE TRAIL - SECTIONS, VIEWS, AND DETAILS



NOT TO SCALE

TYPICAL GRAVELPAVE2 DETAIL

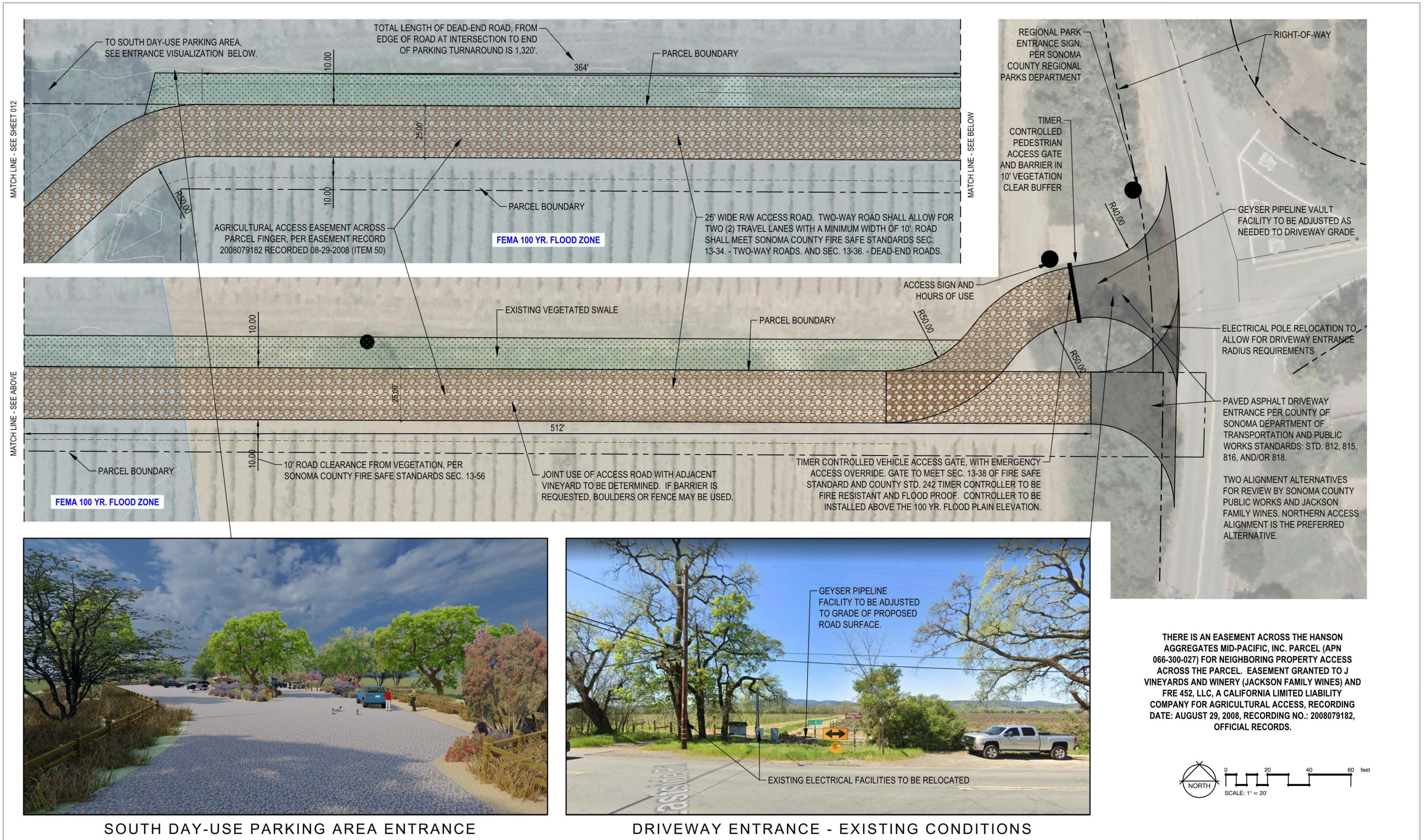
1

1 OF 1

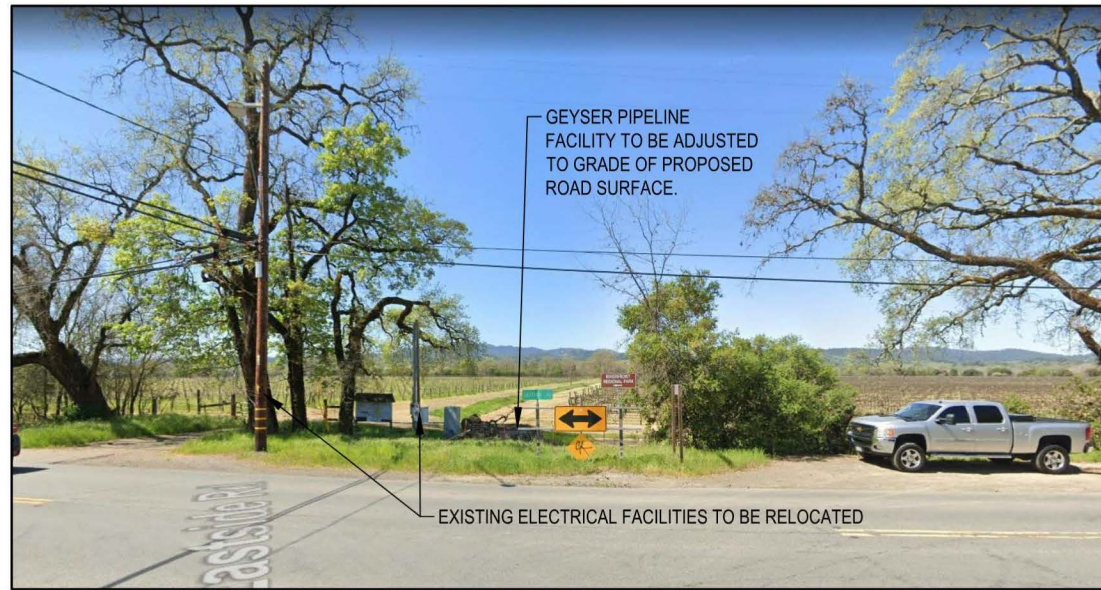


GRAVELPAVE2 REINFORCEMENT SYSTEM BY INVISIBLE STRUCTURES
EXAMPLE PRODUCT FOR USE ON LOWER EXTENT OF TRAIL

STUDY AREA 5: SOUTH DRIVEWAY ACCESS

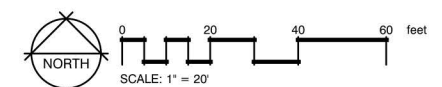


SOUTH DAY-USE PARKING AREA ENTRANCE



DRIVEWAY ENTRANCE - EXISTING CONDITIONS

THERE IS AN EASEMENT ACROSS THE HANSON AGGREGATES MID-PACIFIC, INC. PARCEL (APN 066-300-027) FOR NEIGHBORING PROPERTY ACCESS ACROSS THE PARCEL. EASEMENT GRANTED TO J VINEYARDS AND WINERY (JACKSON FAMILY WINES) AND FRE 452, LLC, A CALIFORNIA LIMITED LIABILITY COMPANY FOR AGRICULTURAL ACCESS, RECORDING DATE: AUGUST 29, 2008, RECORDING NO.: 2008079182, OFFICIAL RECORDS.



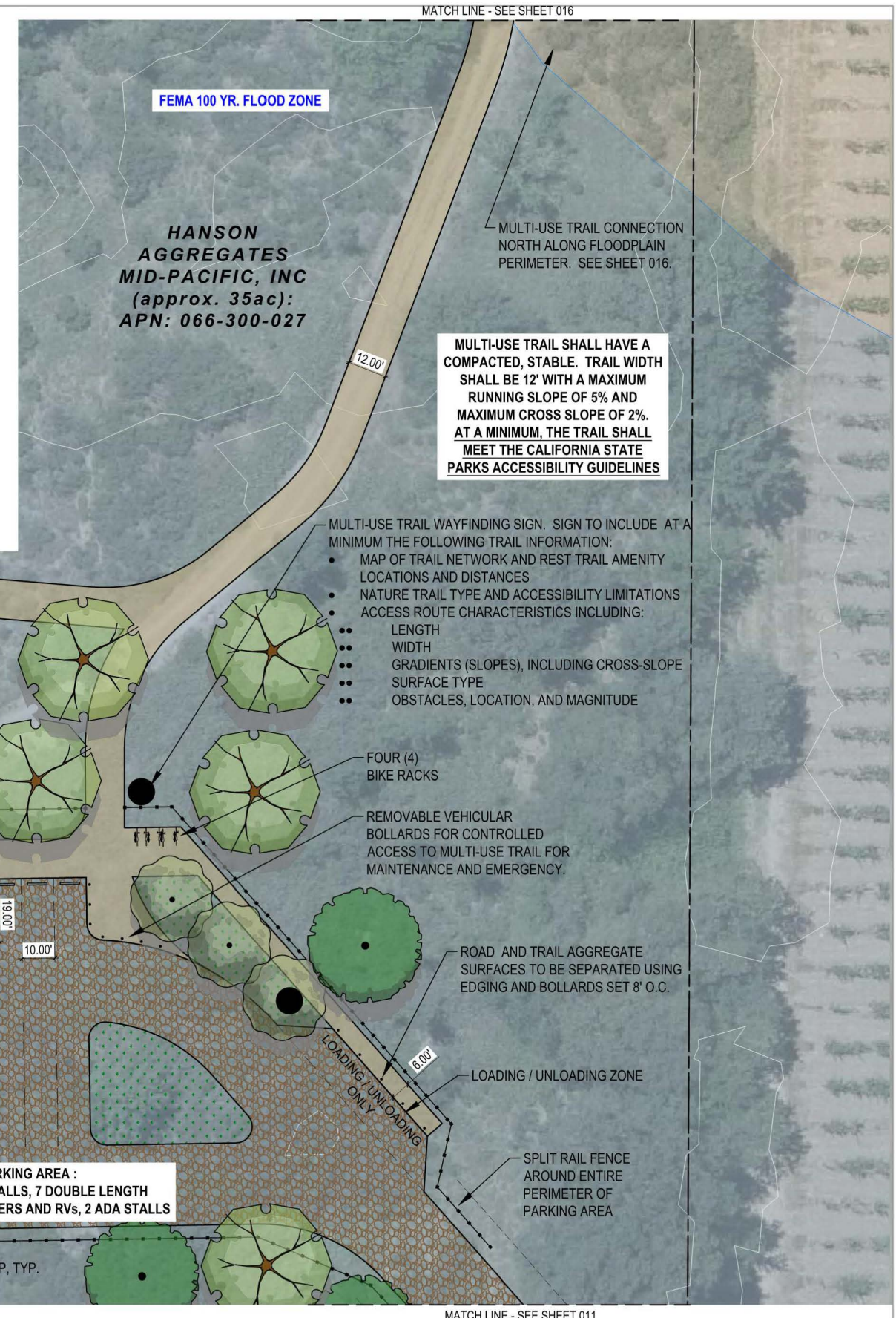
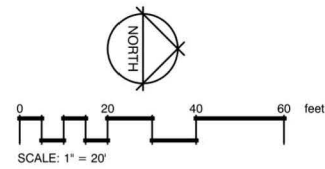
HANSON RUSSIAN RIVER ACCESS AND TRAIL PROJECT 011

Sonoma County, California

STUDY AREA 6: SOUTH DAY-USE PARKING AREA



SOUTH DAY-USE PARKING AREA OVERVIEW



ADA ACCESSIBLE, FLOOD PROOF, FIRE RESISTANT MODULE RESTROOM WITH SINGLE VAULT SEWER. SEE EXAMPLE SHEET 006. FINISH PAD ELEVATION FOR RESTROOM SHALL BE ABOVE THE FEMA REGULATORY FLOODWAY.

CONCRETE SURFACE FOR ADA ACCESSIBLE PATH TO RESTROOM.

SECONDARY BYPASS TRAIL FOR INDIVIDUALS THAT WANT TO AVOID PARKING AREA AND RESTROOM

REMOVABLE VEHICULAR BOLLARDS FOR CONTROLLED ACCESS TO MULTI-USE TRAIL FOR MAINTENANCE AND EMERGENCY.

MULTI-USE TRAIL CONNECTION SOUTH ALONG FLOODPLAIN PERIMETER. SEE SHEET 017.

TRAIL WAYFINDING SIGN

TACKED DOWN USED FIRE HOSE TO DELINEATE PARKING SPACES

CONCRETE WHEEL STOP, TYP.

FOUR (4) BIKE RACKS

REMOVABLE VEHICULAR BOLLARDS FOR CONTROLLED ACCESS TO MULTI-USE TRAIL FOR MAINTENANCE AND EMERGENCY.

ROAD AND TRAIL AGGREGATE SURFACES TO BE SEPARATED USING EDGING AND BOLLARDS SET 8' O.C.

LOADING / UNLOADING ZONE

SPLIT RAIL FENCE AROUND ENTIRE PERIMETER OF PARKING AREA

PARKING AREA :
25 PARKING STALLS, 7 DOUBLE LENGTH STALLS FOR TRAILERS AND RVs, 2 ADA STALLS

HANSON RUSSIAN RIVER ACCESS AND TRAIL PROJECT 012

Sonoma County, California

STUDY AREA 6: SOUTH DAY-USE PARKING AREA - 3D VISUALIZATIONS



NORTH TRAIL ENTRY NODE



RESTROOM AND ADA PARKING

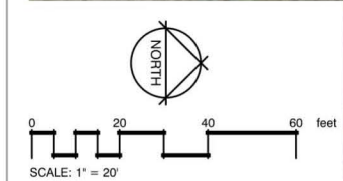
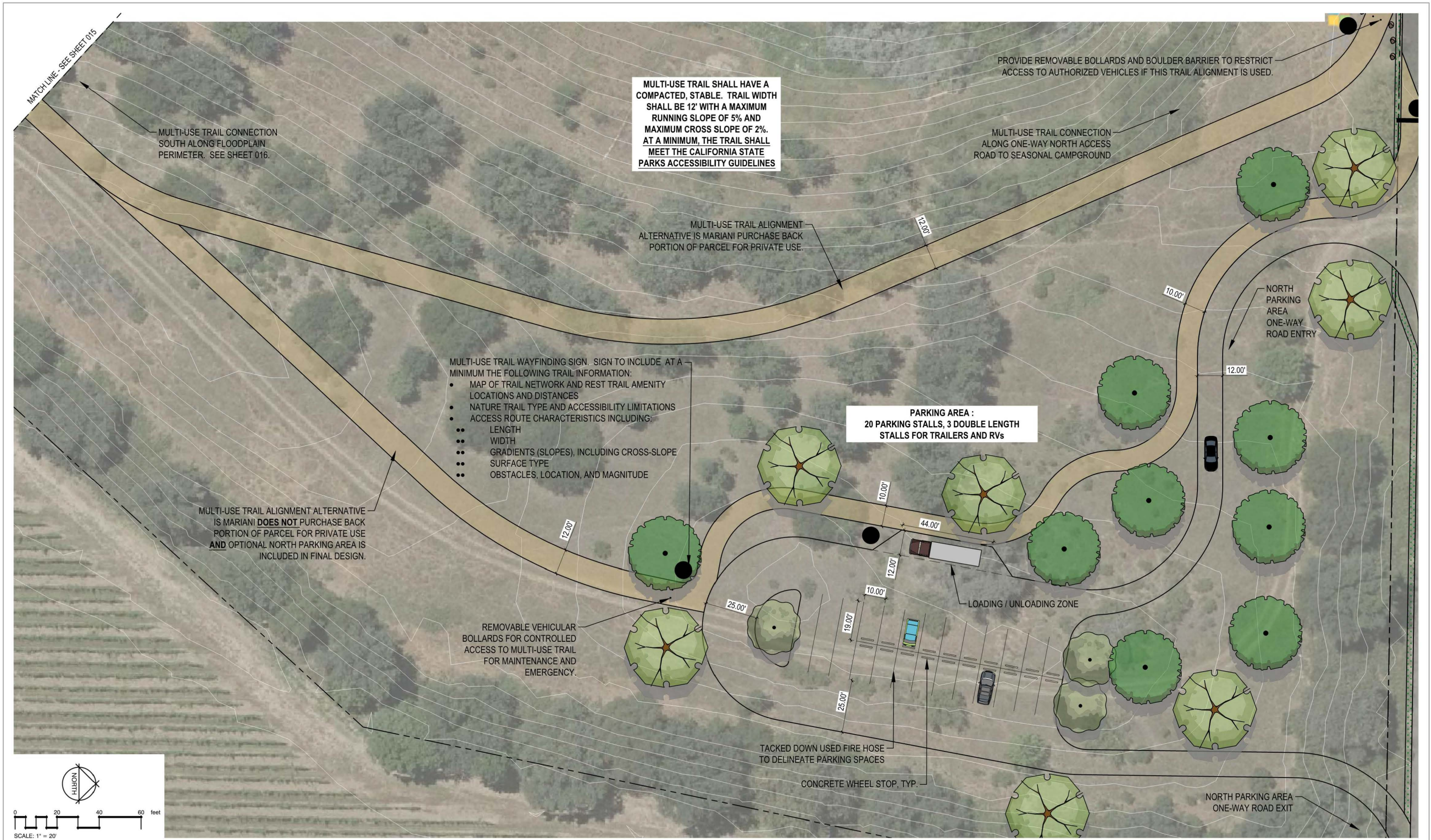


PARKING LOT AREA



SOUTH TRAIL ENTRY NODE

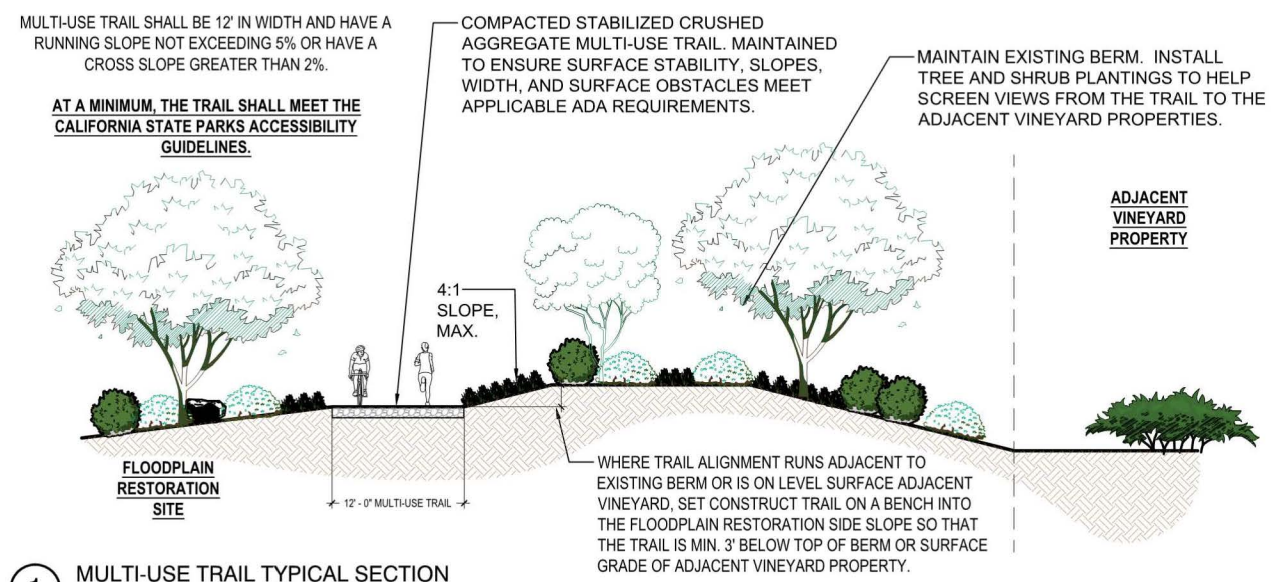
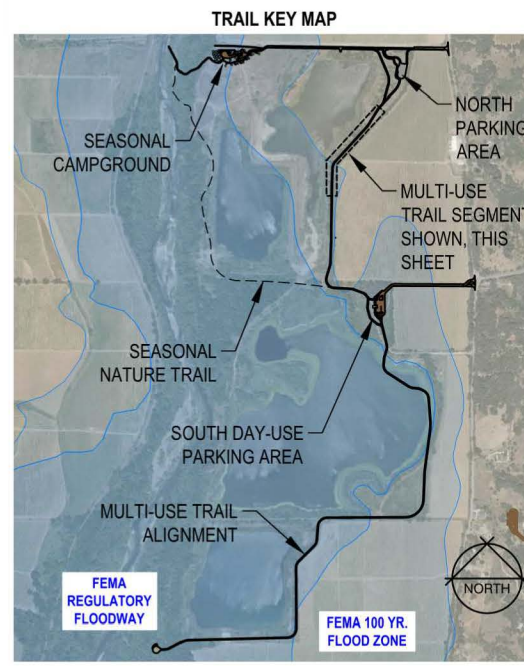
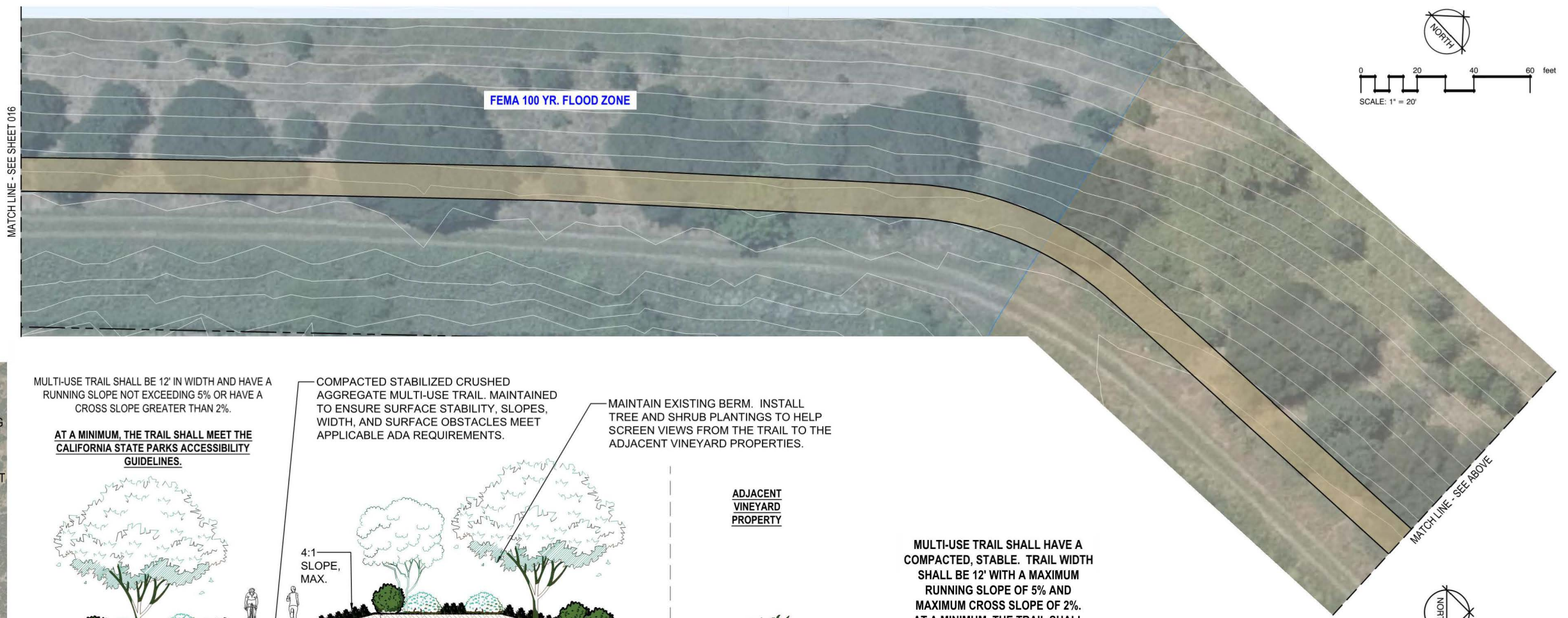
STUDY AREA 7: OPTIONAL NORTH PARKING AREA



HANSON RUSSIAN RIVER ACCESS AND TRAIL PROJECT 014

Sonoma County, California

STUDY AREA 8: MULTI-USE TRAIL



MULTI-USE TRAIL SHALL HAVE A COMPACTED, STABLE. TRAIL WIDTH SHALL BE 12' WITH A MAXIMUM RUNNING SLOPE OF 5% AND MAXIMUM CROSS SLOPE OF 2%. AT A MINIMUM, THE TRAIL SHALL MEET THE CALIFORNIA STATE PARKS ACCESSIBILITY GUIDELINES

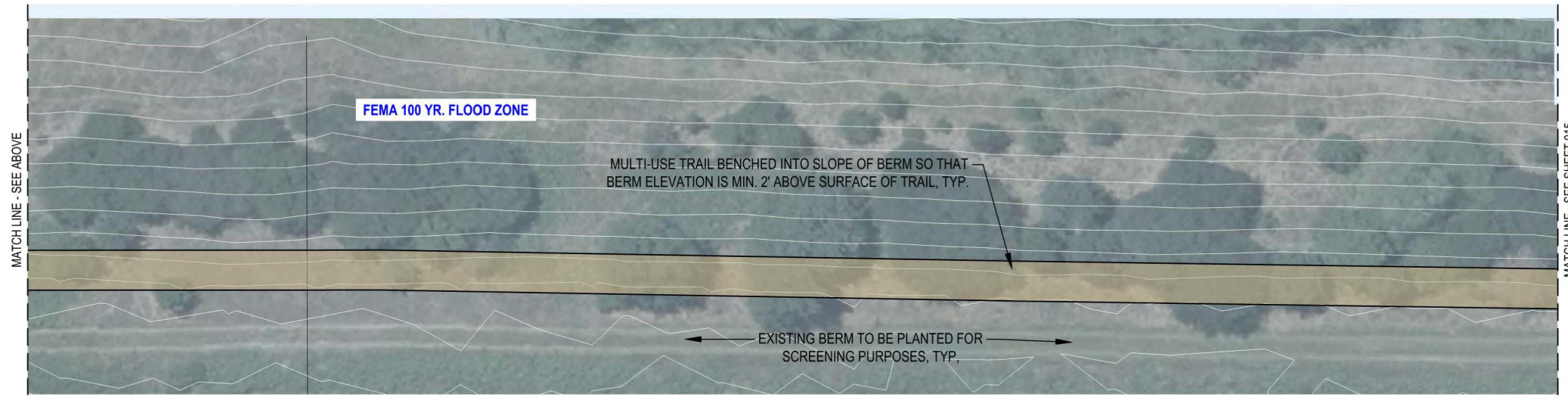
1 MULTI-USE TRAIL TYPICAL SECTION
1/8" = 1'-0"

P-HA-12

HANSON RUSSIAN RIVER ACCESS AND TRAIL PROJECT 015

Sonoma County, California

STUDY AREA 8: MULTI-USE TRAIL



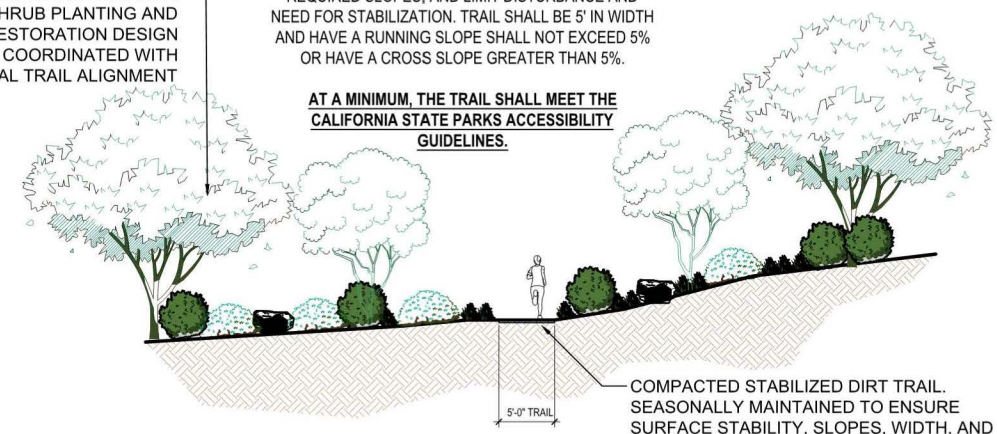
TO SOUTH DAY-USE PARKING AREA, SEE SHEET 012.

MATCH LINE - SEE SHEET 012

THE TRAIL IS ANTICIPATED TO TRAVERSE THE RIPARIAN FLOODPLAIN RESTORATION AREA. TREE AND SHRUB PLANTING AND GRADING OF RESTORATION DESIGN SHALL BE COORDINATED WITH SEASONAL TRAIL ALIGNMENT

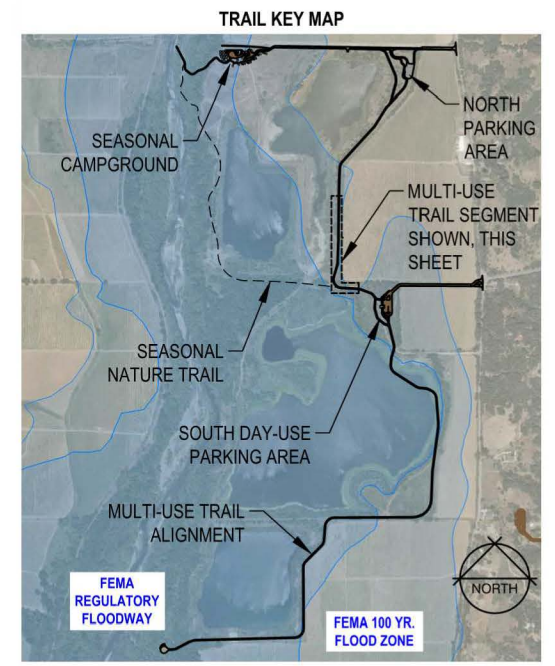
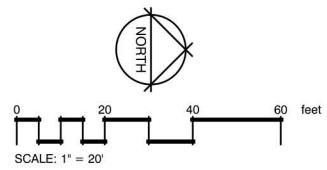
VERIFY TRAIL ALIGNMENT IN THE FIELD TO MINIMIZE IMPACT TO EXISTING TREES, MAINTAIN SLOPE REQUIRED SLOPES, AND LIMIT DISTURBANCE AND NEED FOR STABILIZATION. TRAIL SHALL BE 5' IN WIDTH AND HAVE A RUNNING SLOPE SHALL NOT EXCEED 5% OR HAVE A CROSS SLOPE GREATER THAN 5%.

AT A MINIMUM, THE TRAIL SHALL MEET THE CALIFORNIA STATE PARKS ACCESSIBILITY GUIDELINES.



1 SEASONAL NATURE TRAIL
1/8" = 1'-0"

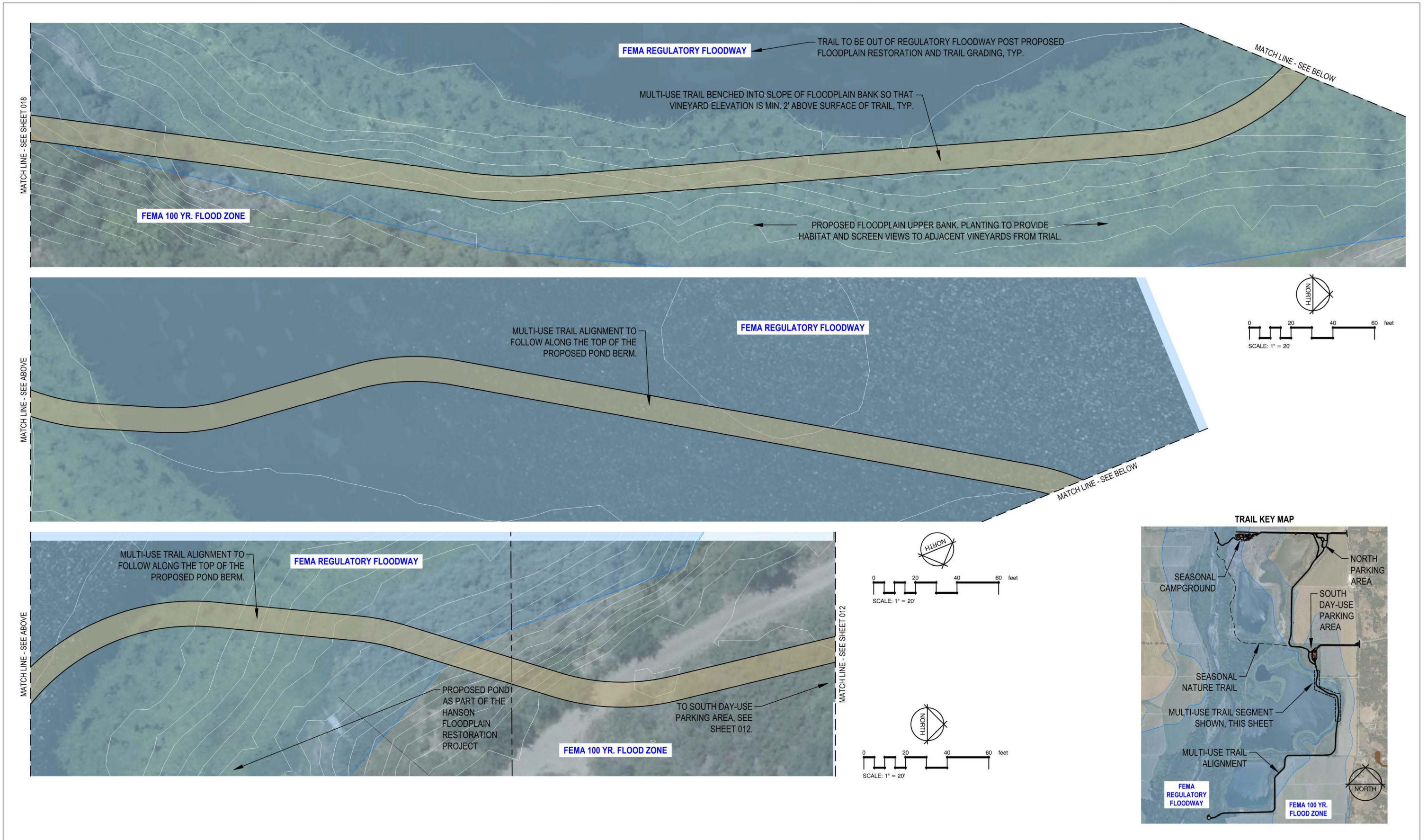
P-HA-11



HANSON RUSSIAN RIVER ACCESS AND TRAIL PROJECT 016

Sonoma County, California

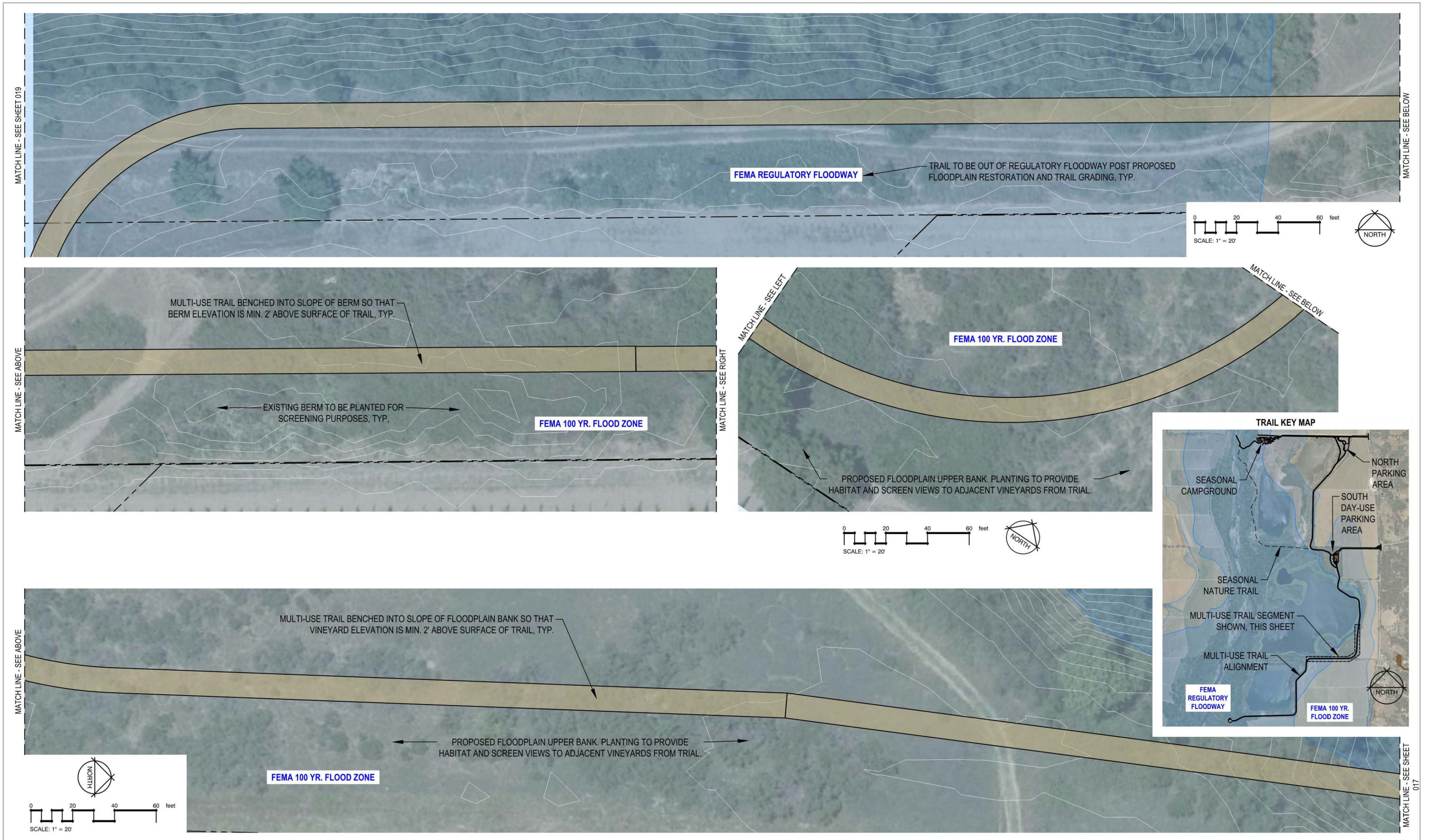
STUDY AREA 8: MULTI-USE TRAIL



HANSON RUSSIAN RIVER ACCESS AND TRAIL PROJECT 017

Sonoma County, California

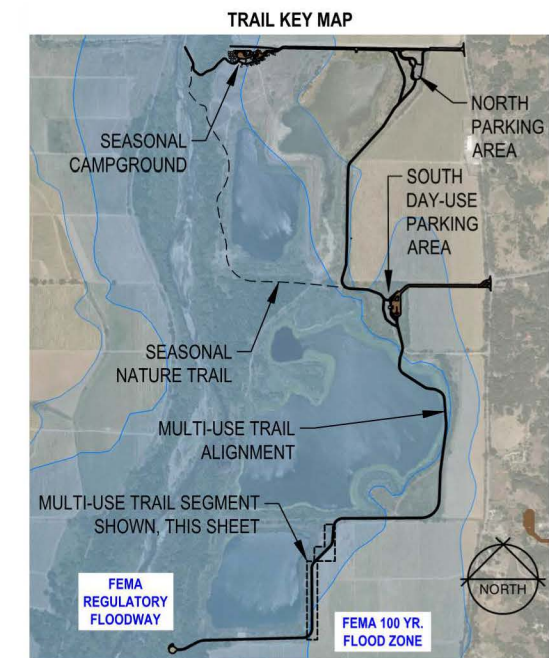
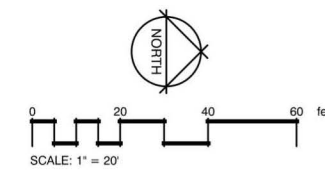
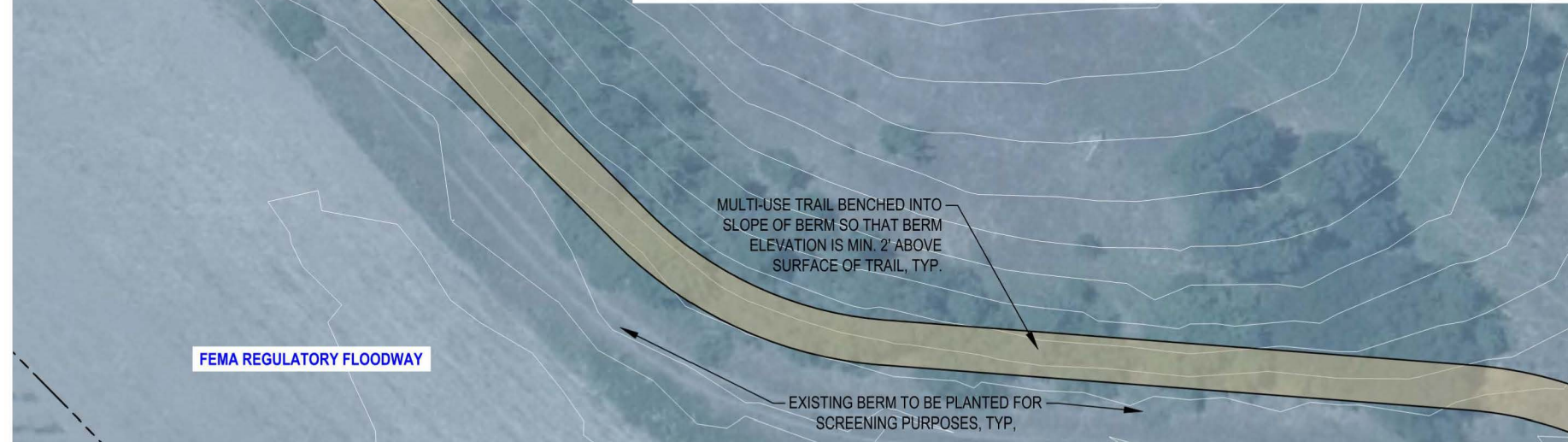
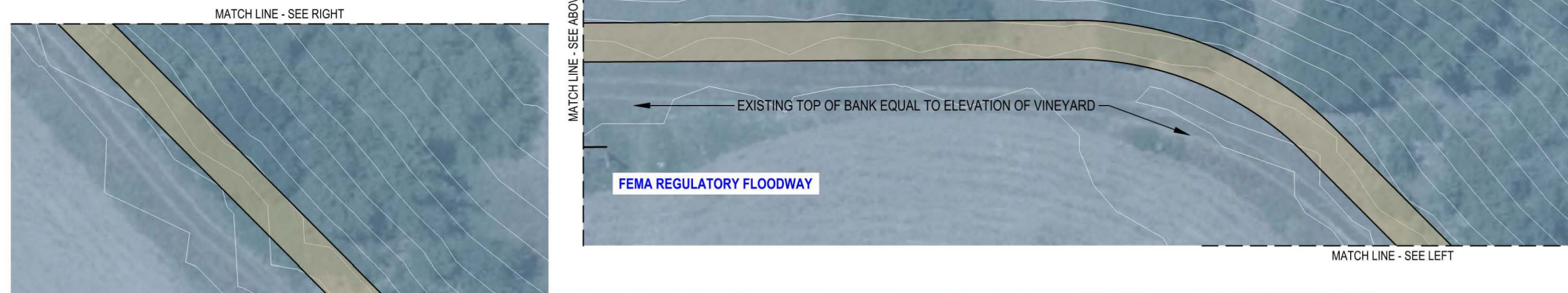
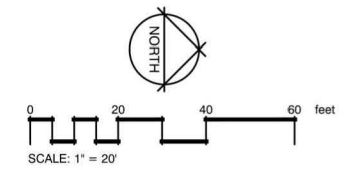
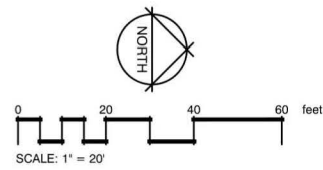
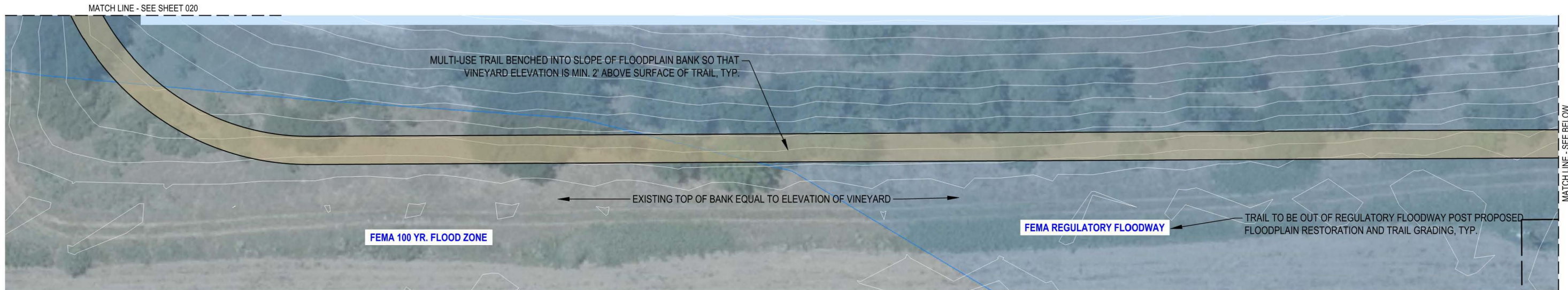
STUDY AREA 8: MULTI-USE TRAIL



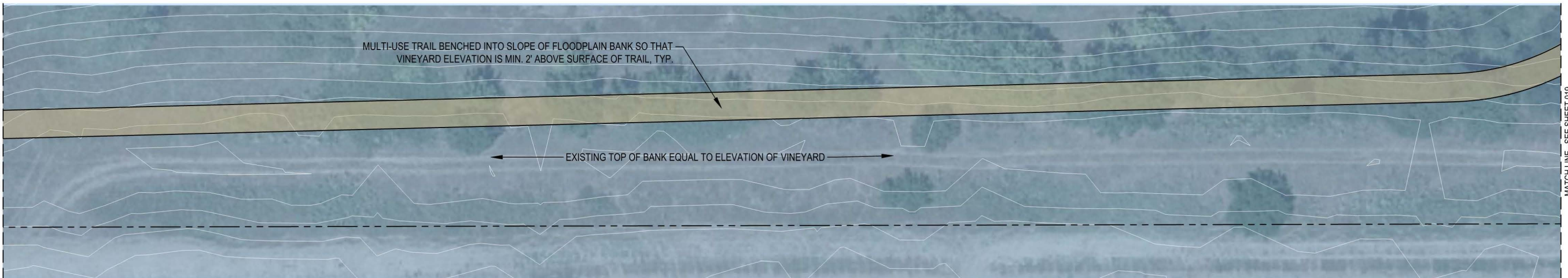
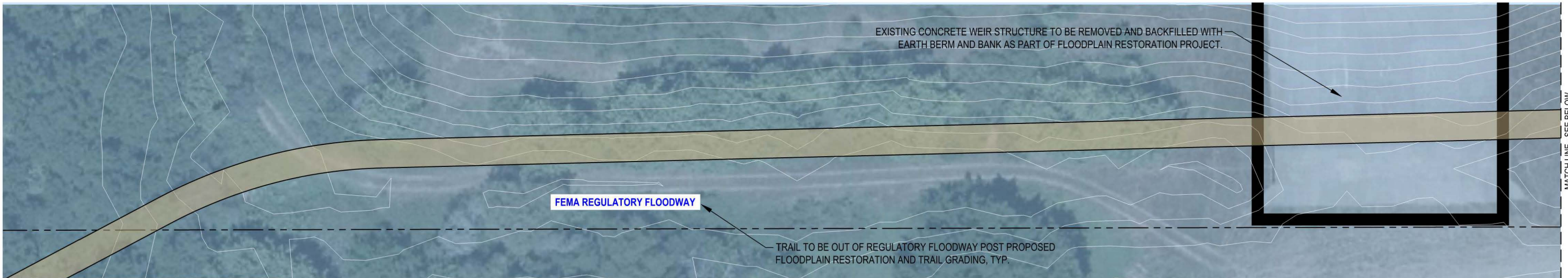
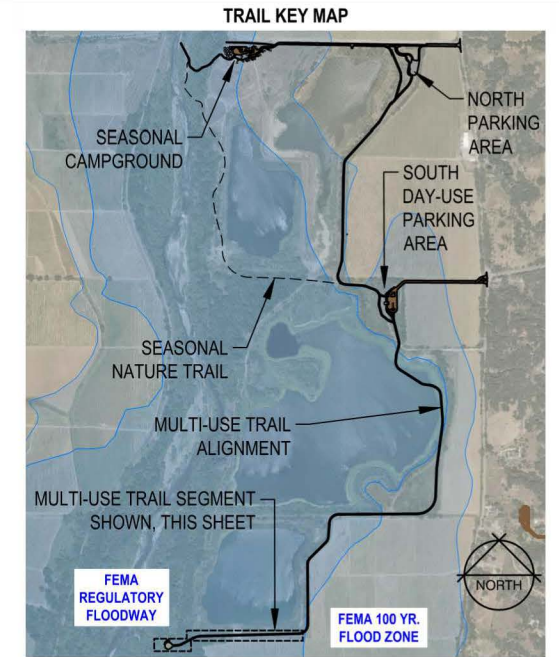
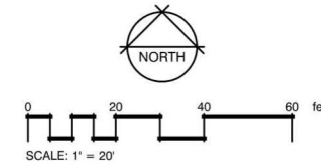
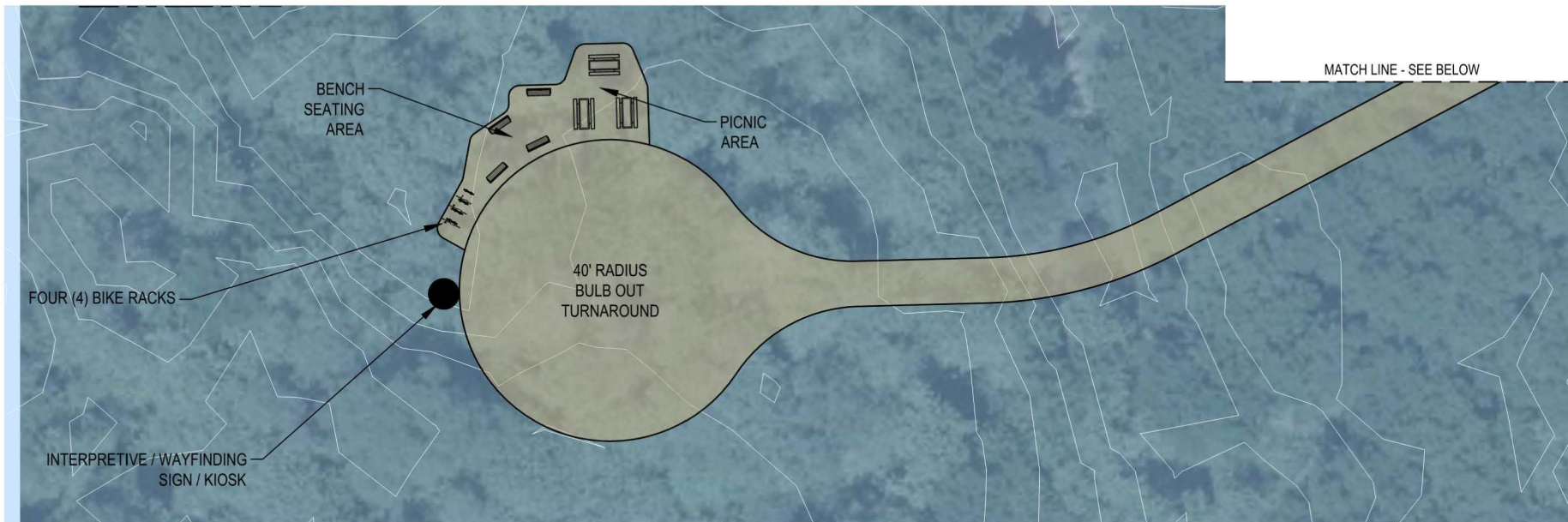
HANSON RUSSIAN RIVER ACCESS AND TRAIL PROJECT 018

Sonoma County, California

STUDY AREA 8: MULTI-USE TRAIL



STUDY AREA 8: MULTI-USE TRAIL



PRELIMINARY PLANT SCHEDULE

PRELIMINARY CONTAINER PLANT SCHEDULE

TREES

Acer negundo
 Aesculus californica
 Arbutus menziesii
 Juglans hindsii
 Quercus agrifolia
 Quercus kelloggii
 Quercus lobata
 Umbellularia californica

COMMON NAME

Box Elder
 California Buckeye
 Pacific Madrone
 California Black Walnut
 Coast Live Oak
 California Black Oak
 Valley Oak
 Bay Laurel

SHRUBS

Artemisia californica
 Baccharis pilularis
 Ceanothus cuneatus
 Corylus cornuta
 Diplacus aurantiacus
 Eriogonum nudum
 Frangula californica
 Heteromeles arbutifolia
 Lonicera hispidula
 Rhododendron occidentale
 Rosa californica
 Rubus ursinus
 Sambucus nigra
 Vaccinium ovatum
 Vitis californica

COMMON NAME

California Sagebrush
 Coyote Brush
 Buckbrush
 Western Hazelnut
 Sticky Monkeyflower
 Naked Buckwheat
 California Coffeeberry
 Toyon
 Honeysuckle
 Western Azalea
 California Wild Rose
 California Blackberry
 Black Elderberry
 Evergreen Huckleberry
 California Wild Grape

SEED MIX

HABITAT TYPE: UPLAND SEEDING AREAS

BOTANICAL NAME / COMMON NAME

DANTHONIA CALIFORNICA / CALIFORNIA OATGRASS

ELYMUS GLAUCUS / BLUE WILD RYE

MELICA CALIFORNICA / CALIFORNIA MELIC

STIPA PULCHRA / PURPLE NEEDLE GRASS

CLARKIA GRACILIS SSP. SONOMENSIS / SONOMA CLARKIA

EPILOBIUM BRACHYCARPUM / WILLOW HERB

ESCHSCHOLZIA CALIFORNICA / CALIFORNIA POPPY

LUPINUS BICOLOR / PIGMY-LEAF LUPINE

PLANT SCHEDULE IS REFLECTIVE OF THE
 FLOODPLAIN RESTORATION UPPER SLOPE "UPLAND
 RIPARIAN FOREST". SOME ADDITIONAL NATIVE
 UPLAND SPECIES HAVE BEEN ADDED TO THE
 PALETTE.