

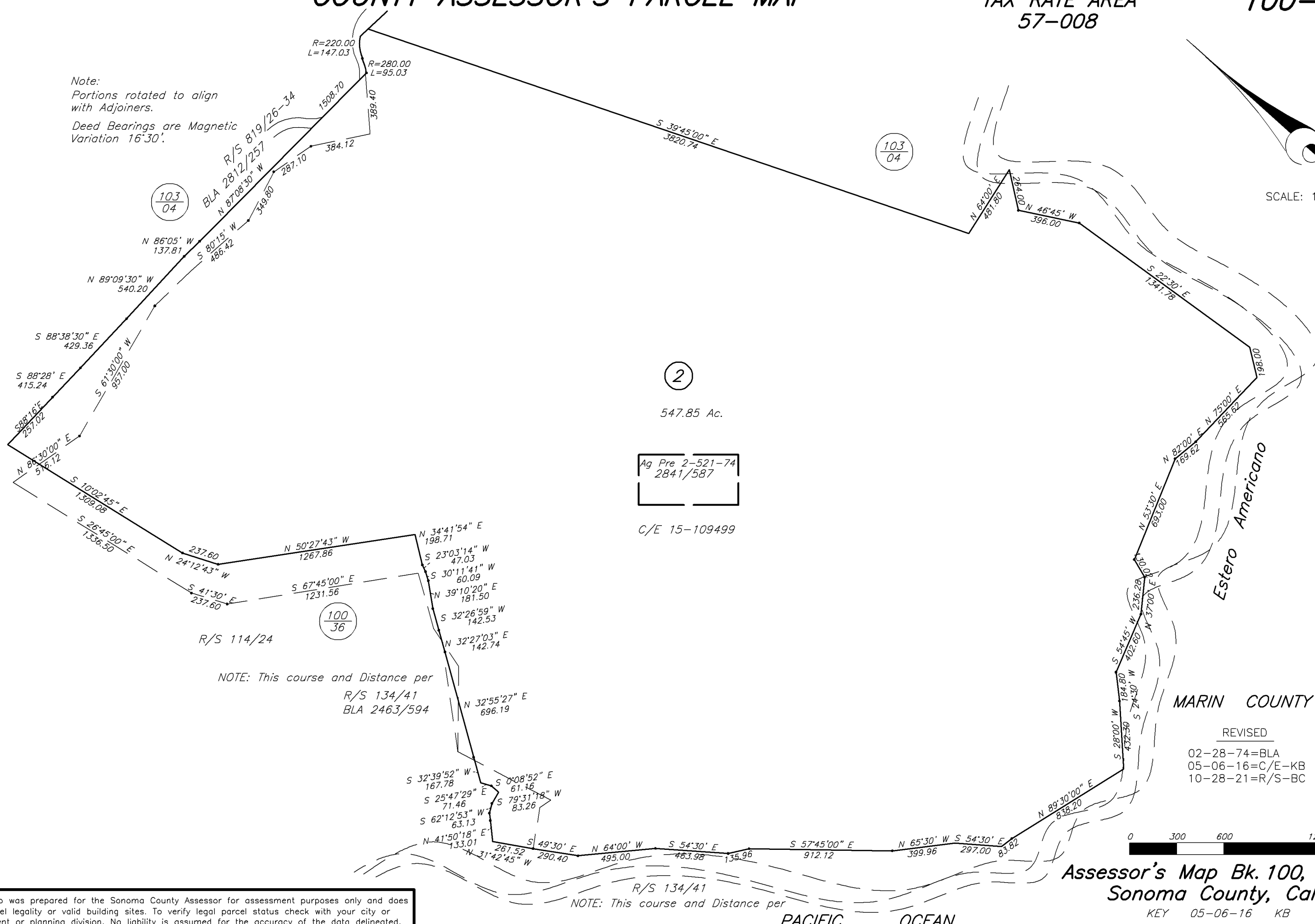
COUNTY ASSESSOR'S PARCEL MAP

TAX RATE AREA
57-008

100-16

Note:
Portions rotated to align
with Adjainers.
Deed Bearings are Magnetic
Variation 16°30'.

SCALE: 1"=600'



2
547.85 Ac.
Ag Pre 2-521-74
2841/587
C/E 15-109499

R/S 114/24
NOTE: This course and Distance per
R/S 134/41
BLA 2463/594

R/S 134/41
NOTE: This course and Distance per

MARIN COUNTY
REVISED
02-28-74=BLA
05-06-16=C/E-KB
10-28-21=R/S-BC



Assessor's Map Bk. 100, Pg. 16
Sonoma County, Calif. (ACAD)
KEY 05-06-16 KB

NOTE: This map was prepared for the Sonoma County Assessor for assessment purposes only and does not indicate parcel legality or valid building sites. To verify legal parcel status check with your city or county development or planning division. No liability is assumed for the accuracy of the data delineated.