

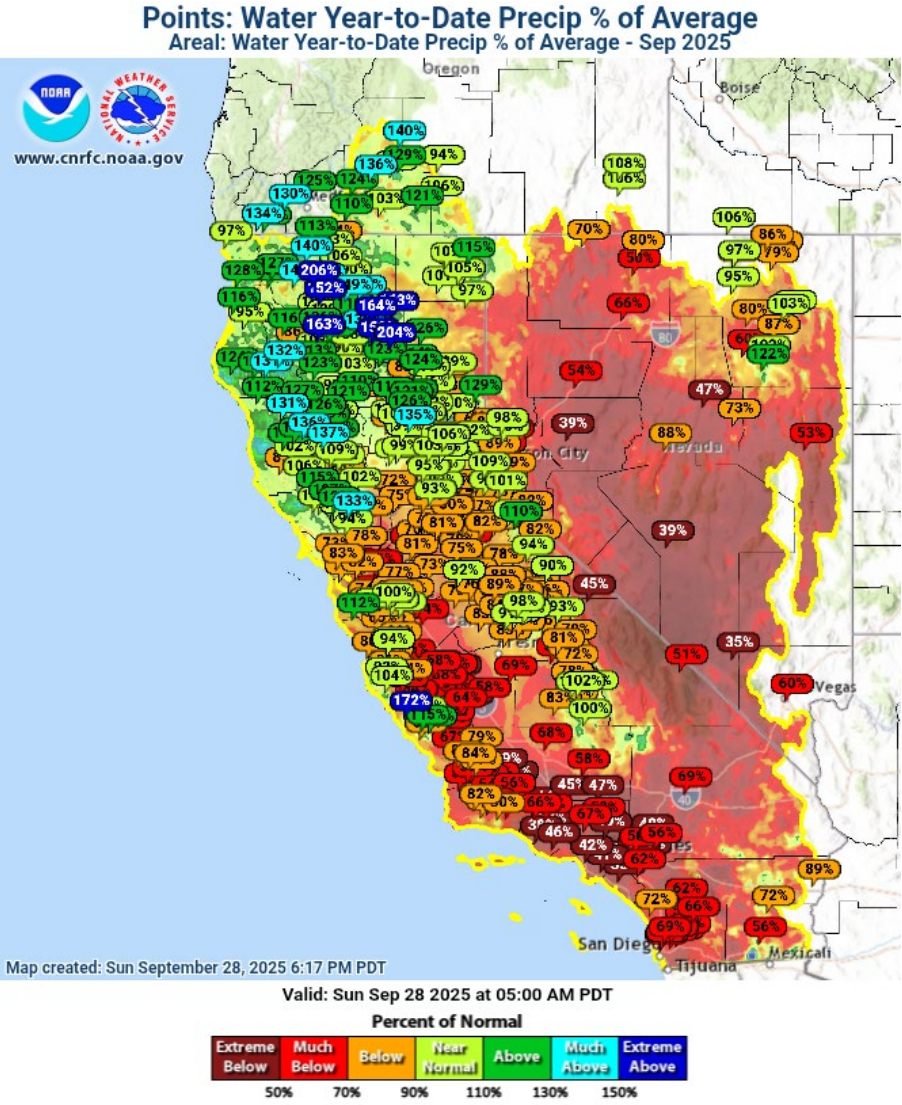


# 2025 Winter/Flood Preparedness Update

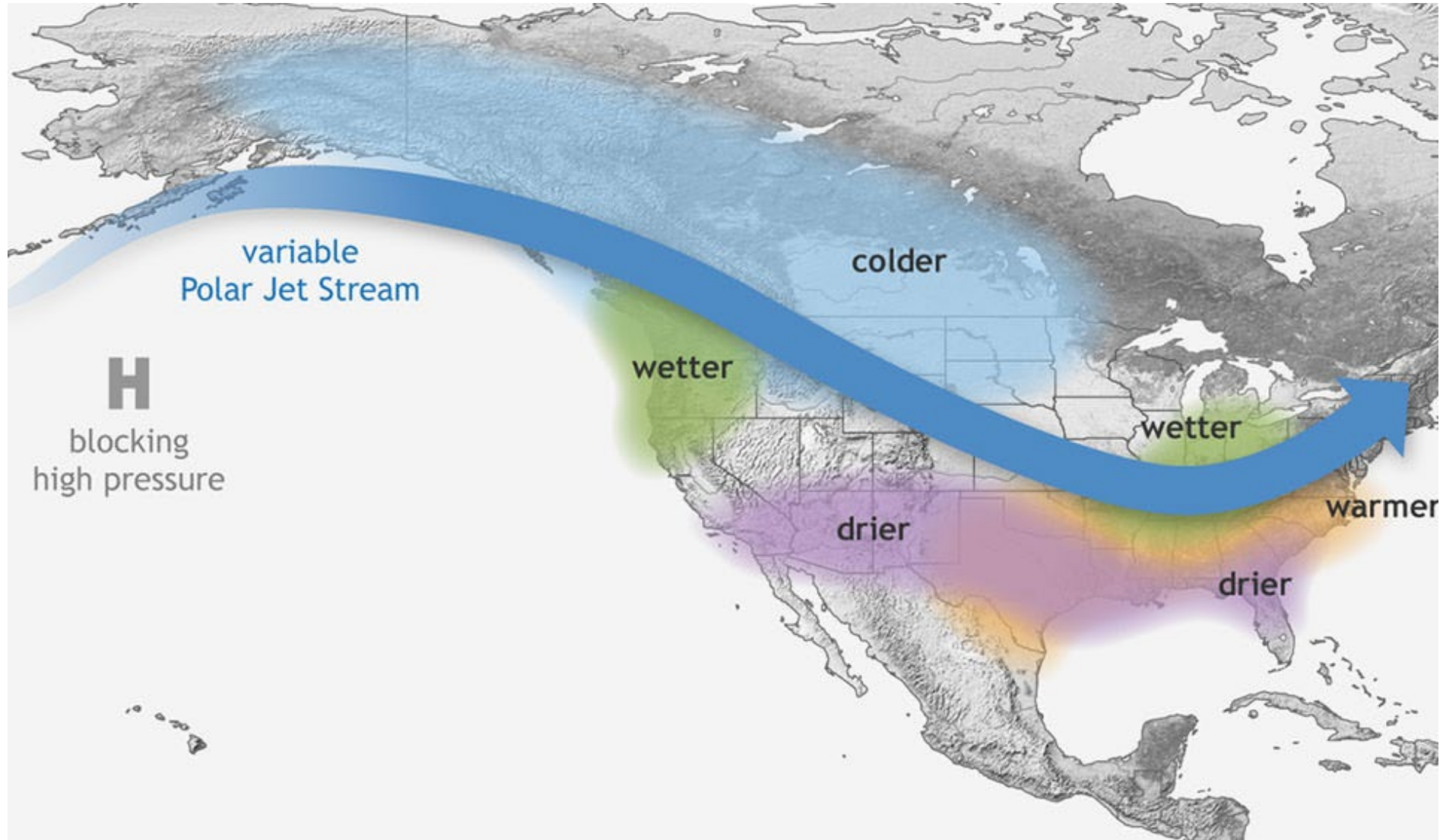
## Sonoma County Board of Supervisors

October 7th, 2025

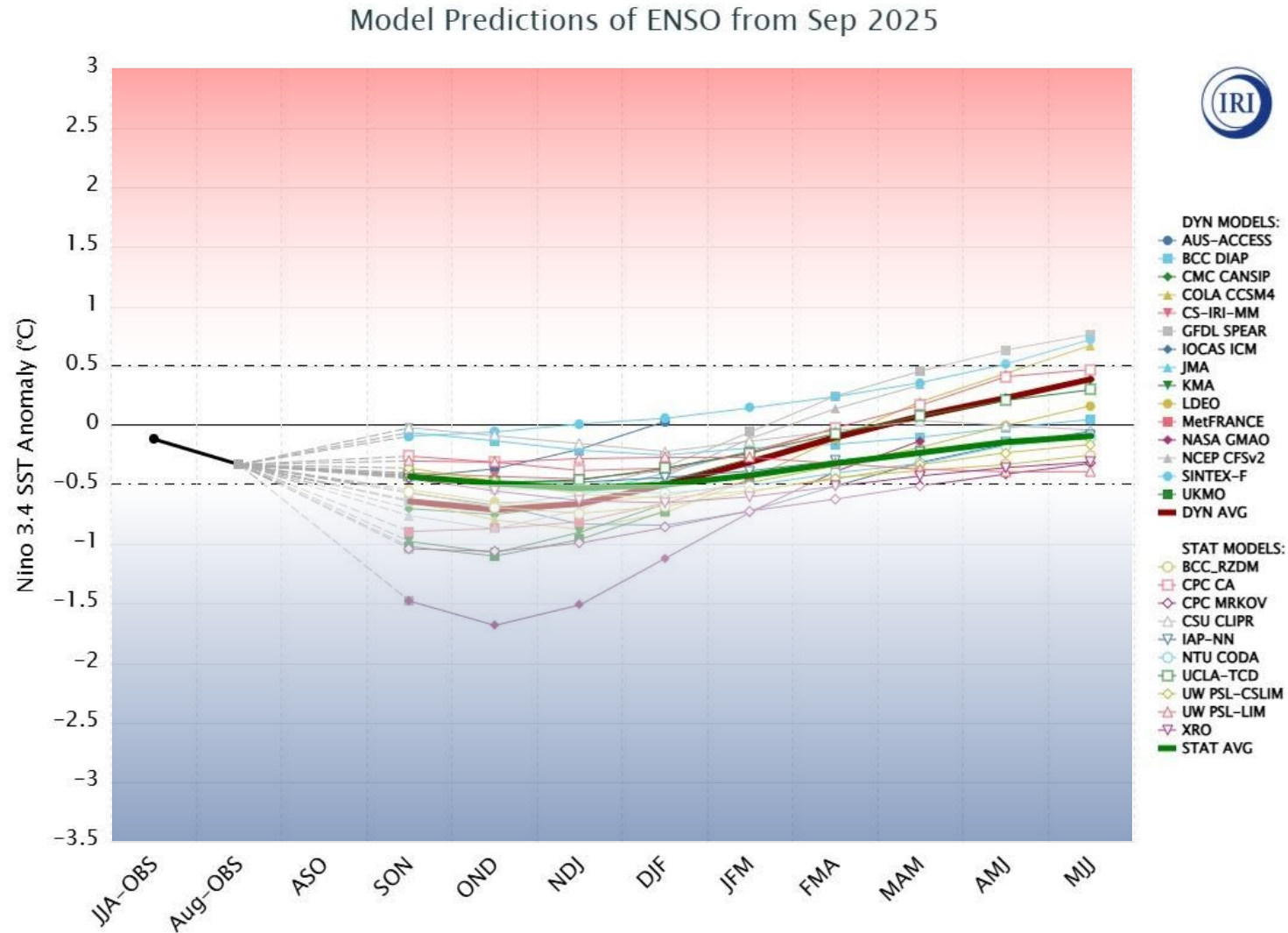
# Winter 2024 / 2025 Recap



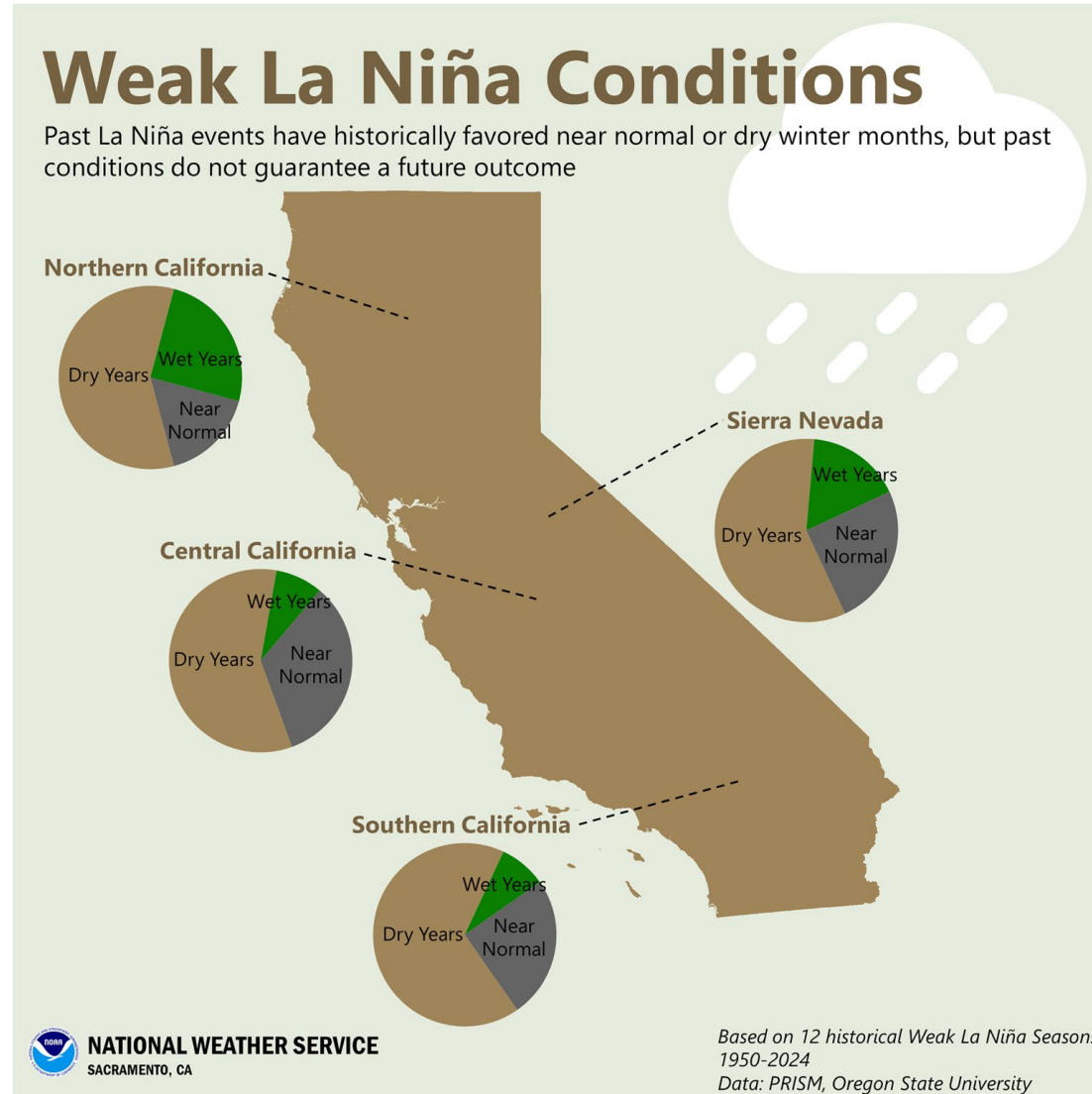
# Southern Oscillation - La Niña / El Niño (ENSO)



# Southern Oscillation - La Niña / El Niño (ENSO)



# Southern Oscillation - La Niña / El Niño (ENSO)

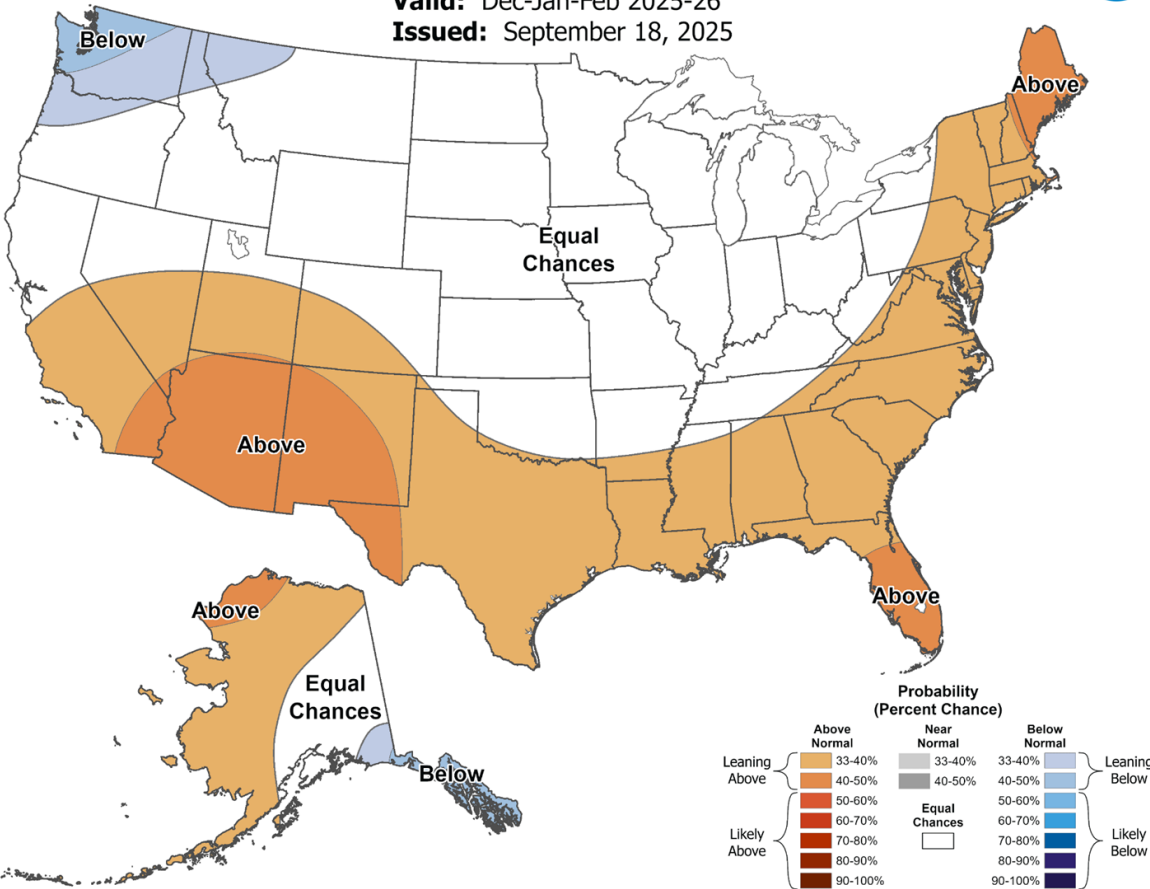


# Winter 2025 / 2026 Outlook



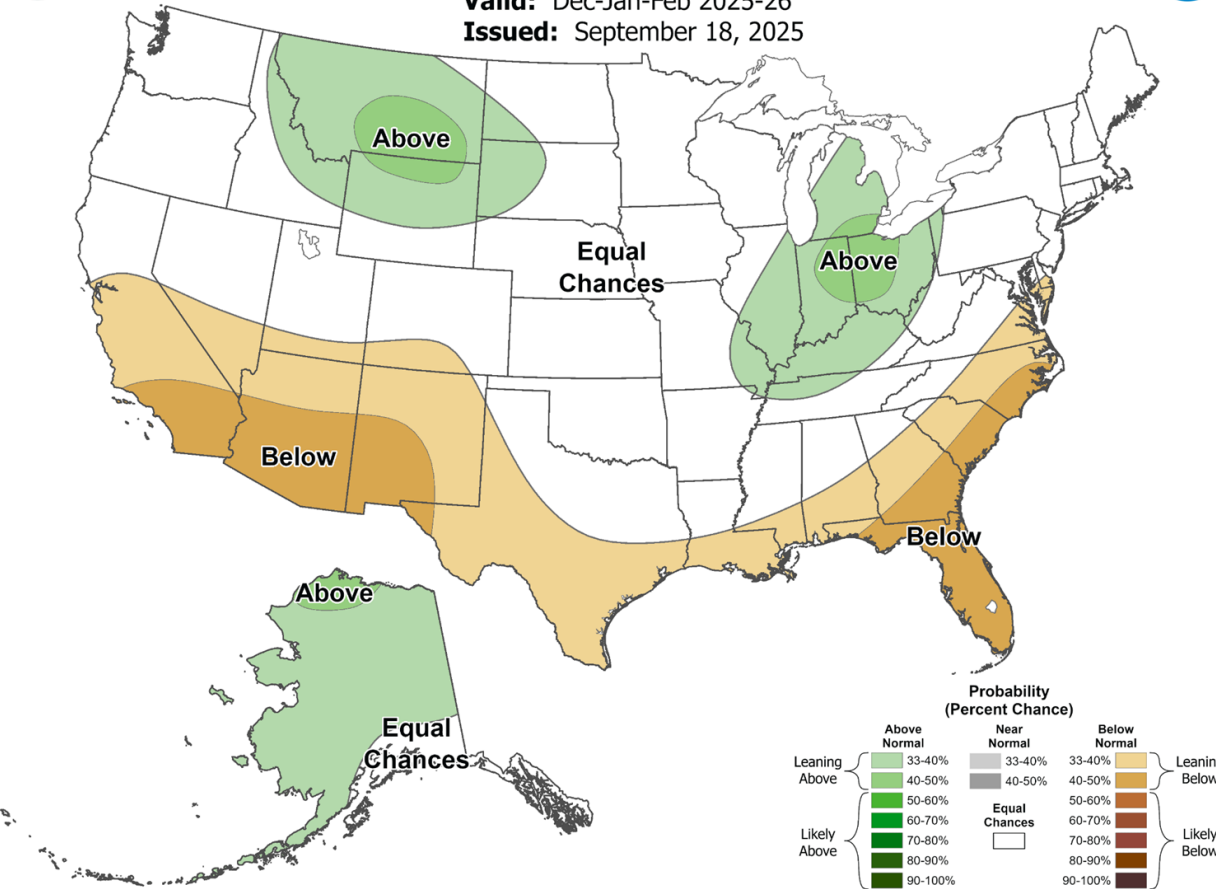
## Seasonal Temperature Outlook

**Valid:** Dec-Jan-Feb 2025-26  
**Issued:** September 18, 2025



## Seasonal Precipitation Outlook

**Valid:** Dec-Jan-Feb 2025-26  
**Issued:** September 18, 2025



# Department of Emergency Management

- 2024 & 2025 Winter Storm Recap



# Department of Emergency Management

- 2024/2025 Winter Recap
- Operational Area Partners Briefing & Overview
- Flood Incident Command Post
- EOC Training
- Community Preparedness & Engagement
- Lower Russian River MHP Engagement
- Water Hazards Program
  - Locations
  - Data Collection
  - Future Mitigation Projects
- County Hazard Mitigation Plan/Program



# Department of Emergency Management

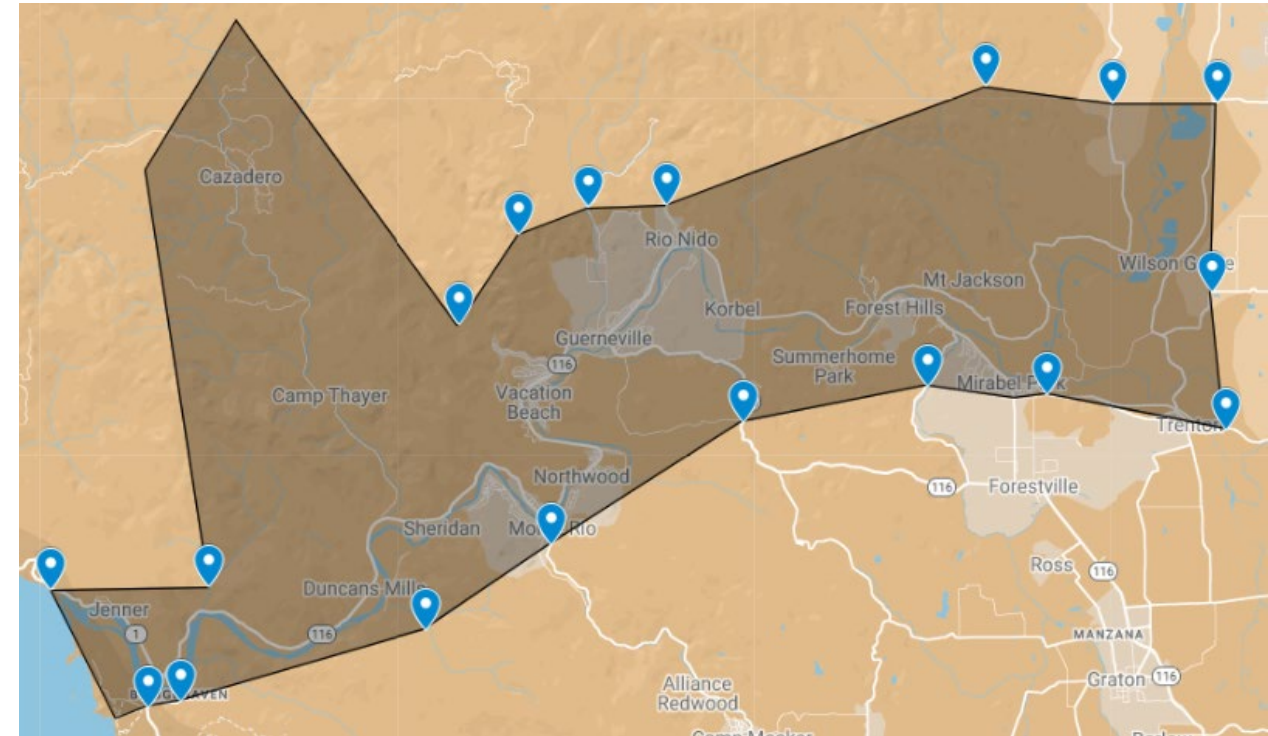
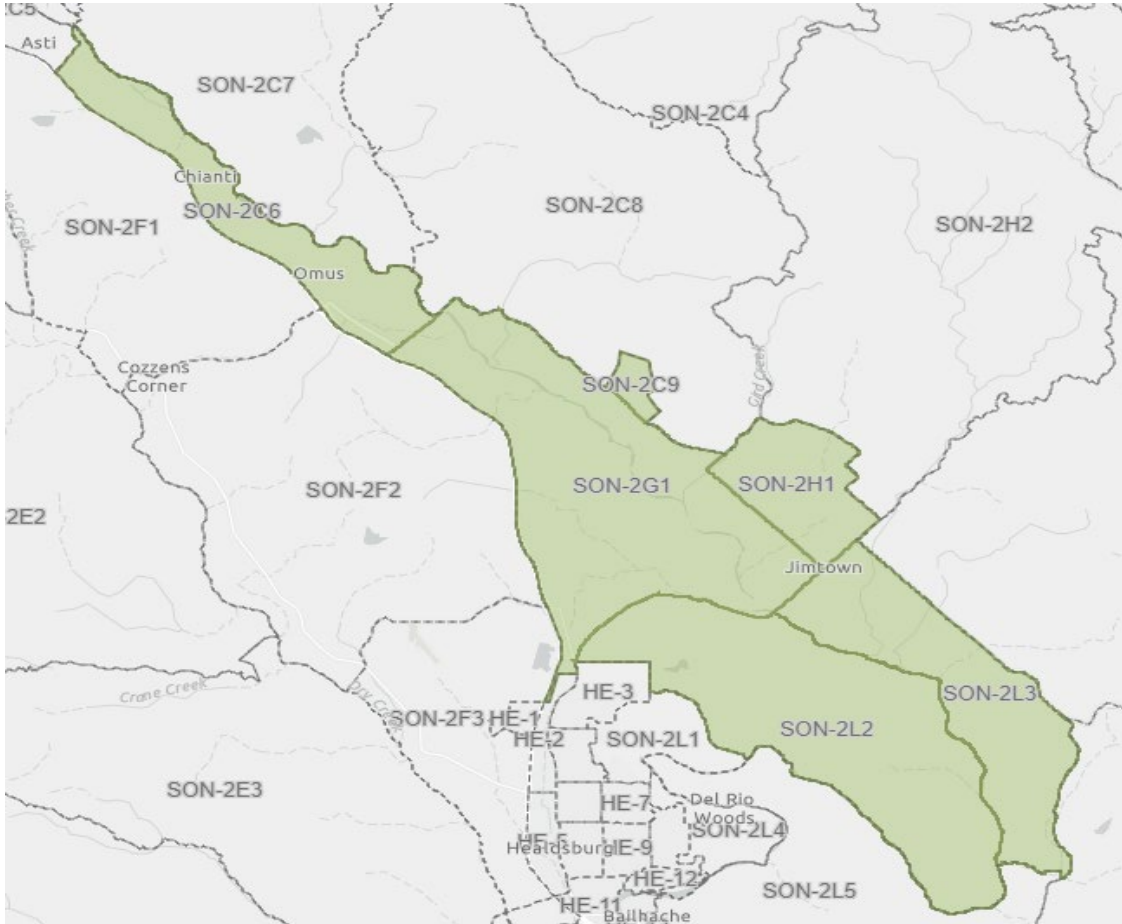
- Response-
  - Monitor
  - Coordination & Collaboration
  - Trail Camera Project
  - Storm Patrol
  - Alert & Warning
  - Activation of EOC and Flood Command Post



# Department of Emergency Management

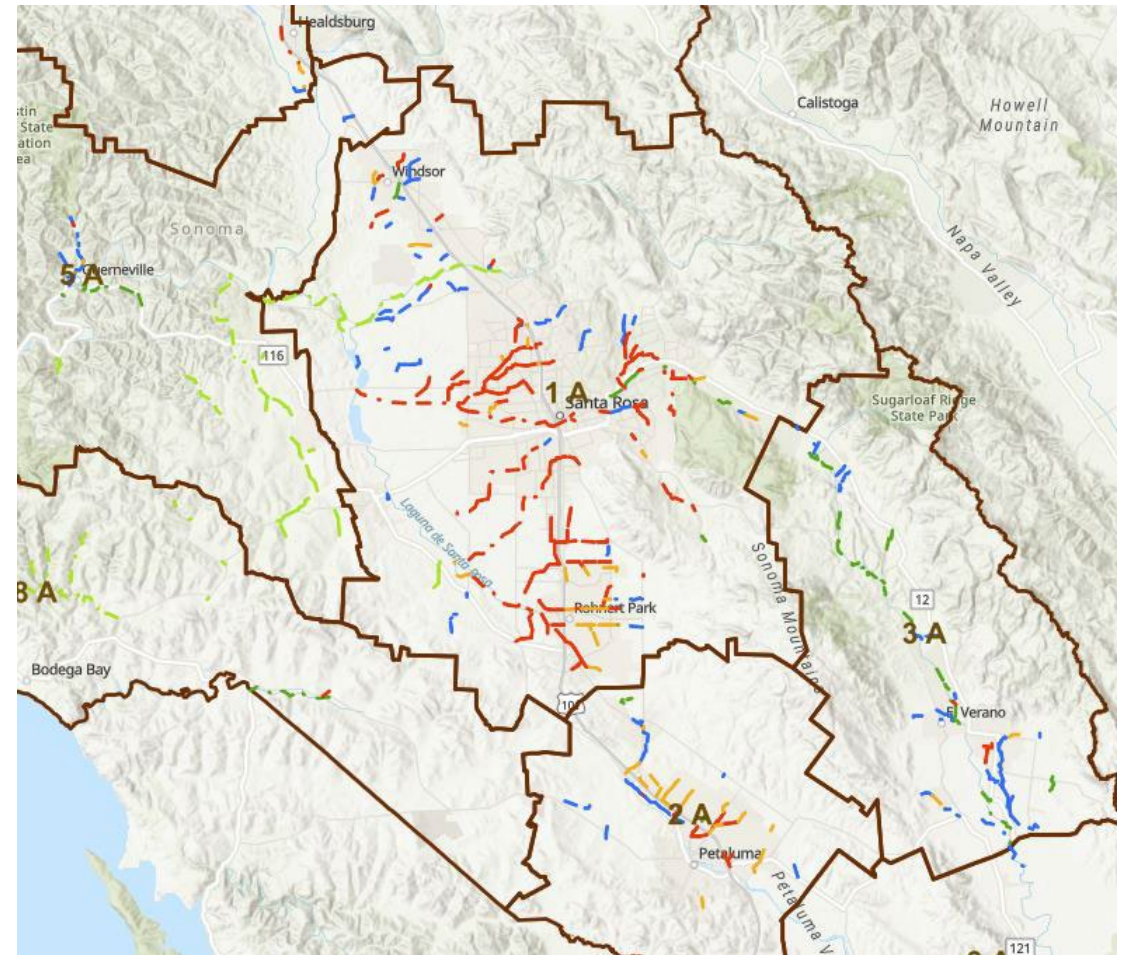
Alert & Warning

Upper & Lower Russian River



# Sonoma Water

- Stream Maintenance Program
- Flood Control Zone Based Revenue
- Central Sonoma Watershed Project
- Routine maintenance of engineered flood control channels
- Limited blockage removal in natural channels.



# Sonoma Water

- Winter 25/25 Preparation Efforts Summary to Date
- 100 Creek Projects Completed
- Vegetation Maintenance
- Sediment Removal
- Trash Clean-up



# Sonoma Water

## Key Projects Completed

- Fife Creek (Zone 5A)
- Lichau Creek (Zone 2A)
- Santa Rosa Creek Diversion (Zone 1A)
- Laguna de Santa Rosa (Zone 1A)
- Rodgers Creek (Zone 3A)
- Nathanson Creek (Zone 3A)



# Turn Around, DON'T DROWN



# Questions/Discussion

