



AG + OPEN SPACE
SONOMA COUNTY

South Sonoma Mountain

Sonoma County Agricultural Preservation and Open Space District has secured a rare opportunity to protect nearly 1,700 acres of regenerative agricultural lands in an ecologically rich, climate resilient, critical wildlife, scenic corridor.



A Historic Conservation Opportunity

Sonoma Mountain has welcomed people and wildlife for millennia. Residents and tourists from around the world are welcomed to the Valley of the Moon with their first views of the County's namesake mountain. A local and regional conservation priority for decades, South Sonoma Mountain contains some of the County's most iconic lands.

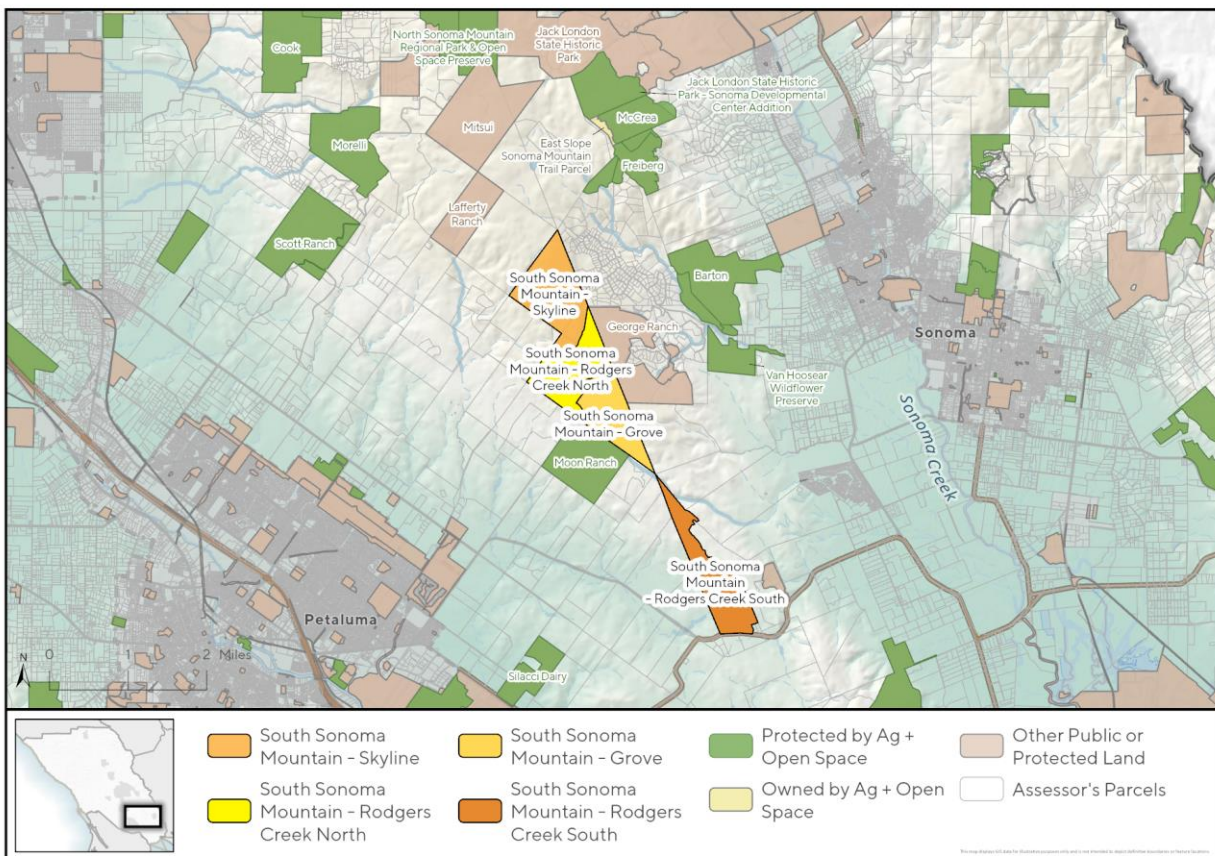
Sonoma County Agricultural and Open Space Preservation District (Ag + Open Space) has a historic opportunity to protect four contiguous sustainable agricultural properties on South Sonoma Mountain with conservation easements. Formerly known as Triangle G Ranch, each property exemplifies cherished values in Sonoma County: an agricultural way of life in harmony with wildlife, nature, and beautiful scenery. The four properties – Grove, Rodgers Creek North, Rodgers Creek South, Skyline, are currently under a grazing lease with the Sonoma Mountain Institute, a nonprofit organization at the leading edge of regenerative agriculture. Acquiring conservation easements will ensure permanent protection of these properties for their regenerative agriculture, landscape-scale critical wildlife habitat, climate resiliency, and scenic benefits.

Key Conservation Outcomes:

Conserving these significant South Sonoma Mountain properties will:

- Reduce the allowance of development. Existing zoning allows for subdivision into 26 lots for estate-style homes. Under the respective proposed CEs, one estate home may be built on each of the four properties, and Rodgers Creek North and South allow for ag worker housing.
- Continue a legacy of working land landscape-scale grazing;
- Protect existing carbon stocks and enhance carbon sequestration capacity of the landscape through implementation of climate-smart agricultural practices.
- Reduce wildfire risks in a CAL FIRE high fire hazard severity zone.
- Protect habitat for threatened and sensitive wildlife including oak woodland, freshwater marsh, and several miles of Rodgers Creek, tributary to Sonoma Creek and critical stream habitat for ESA-listed steelhead and California red-legged frog.
- Avoid fragmentation in a regionally recognized critical habitat linkage zone and sequester carbon to build climate resilience.
- Preserve an iconic ridgeline that stretches nearly six miles and is equally visible from the towns of Petaluma and Sonoma.

Ag + Open Space is seeking to protect all four properties, collectively one of the most recognized and conservation value rich agricultural properties in the North Bay. Ag + Open Space will contribute substantial reserve funds and is requesting matching funds from the Wildlife Conservation Board and the Sustainable Agricultural Lands Conservation Program.



For more information, contact PAMELA SWAN at pamela.swan@sonoma-county.org