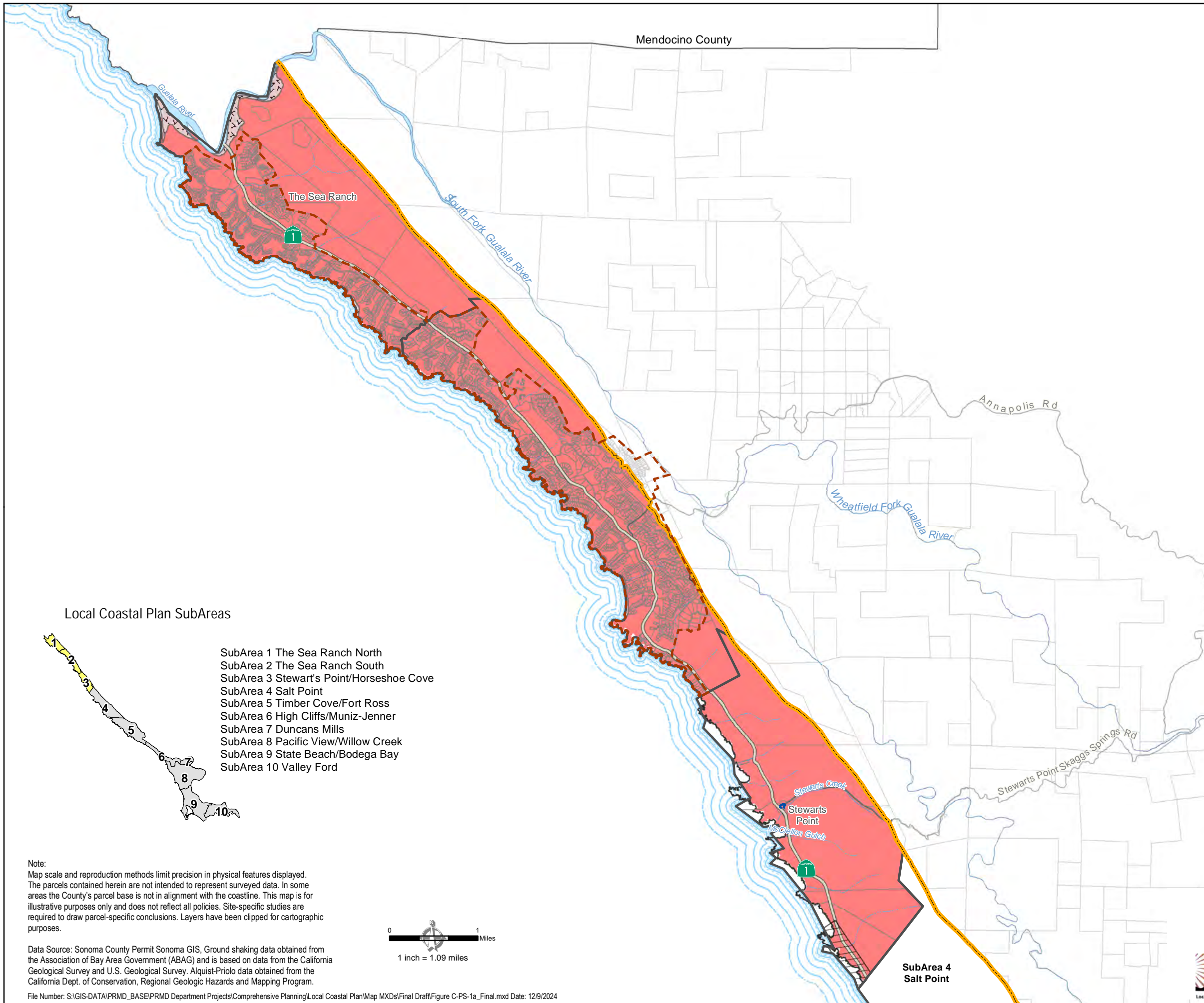


# Sonoma County Local Coastal Plan Seismic Geologic Hazards



### Modified Mercalli Index - MMI

IX - Violent ■

### Liquefaction Potential

Very High

Earthquake Fault Zone

### Base Map Layers

Coastal SubArea

Rural Community

Urban Service Area

Parcel

Coastal Zone Boundary

Natural Coastline

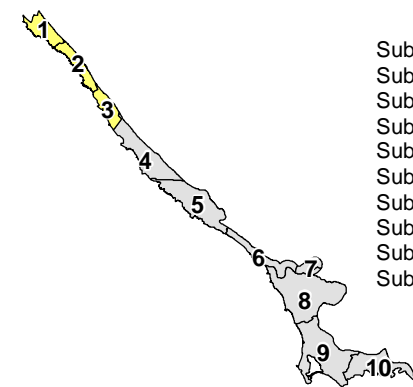
Highway

Road

Perennial Stream

Intermittent Stream

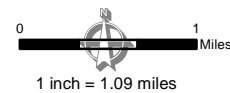
### Local Coastal Plan SubAreas



- SubArea 1 The Sea Ranch North
- SubArea 2 The Sea Ranch South
- SubArea 3 Stewart's Point/Horseshoe Cove
- SubArea 4 Salt Point
- SubArea 5 Timber Cove/Fort Ross
- SubArea 6 High Cliffs/Muniz-Jenner
- SubArea 7 Duncans Mills
- SubArea 8 Pacific View/Willow Creek
- SubArea 9 State Beach/Bodega Bay
- SubArea 10 Valley Ford

**FIGURE C-PS-1a  
Seismic Geologic Hazards  
SubAreas 1 - 3**

Note:  
Map scale and reproduction methods limit precision in physical features displayed. The parcels contained herein are not intended to represent surveyed data. In some areas the County's parcel base is not in alignment with the coastline. This map is for illustrative purposes only and does not reflect all policies. Site-specific studies are required to draw parcel-specific conclusions. Layers have been clipped for cartographic purposes.



Data Source: Sonoma County Permit Sonoma GIS, Ground shaking data obtained from the Association of Bay Area Government (ABAG) and is based on data from the California Geological Survey and U.S. Geological Survey. Alquist-Priolo data obtained from the California Dept. of Conservation, Regional Geologic Hazards and Mapping Program.

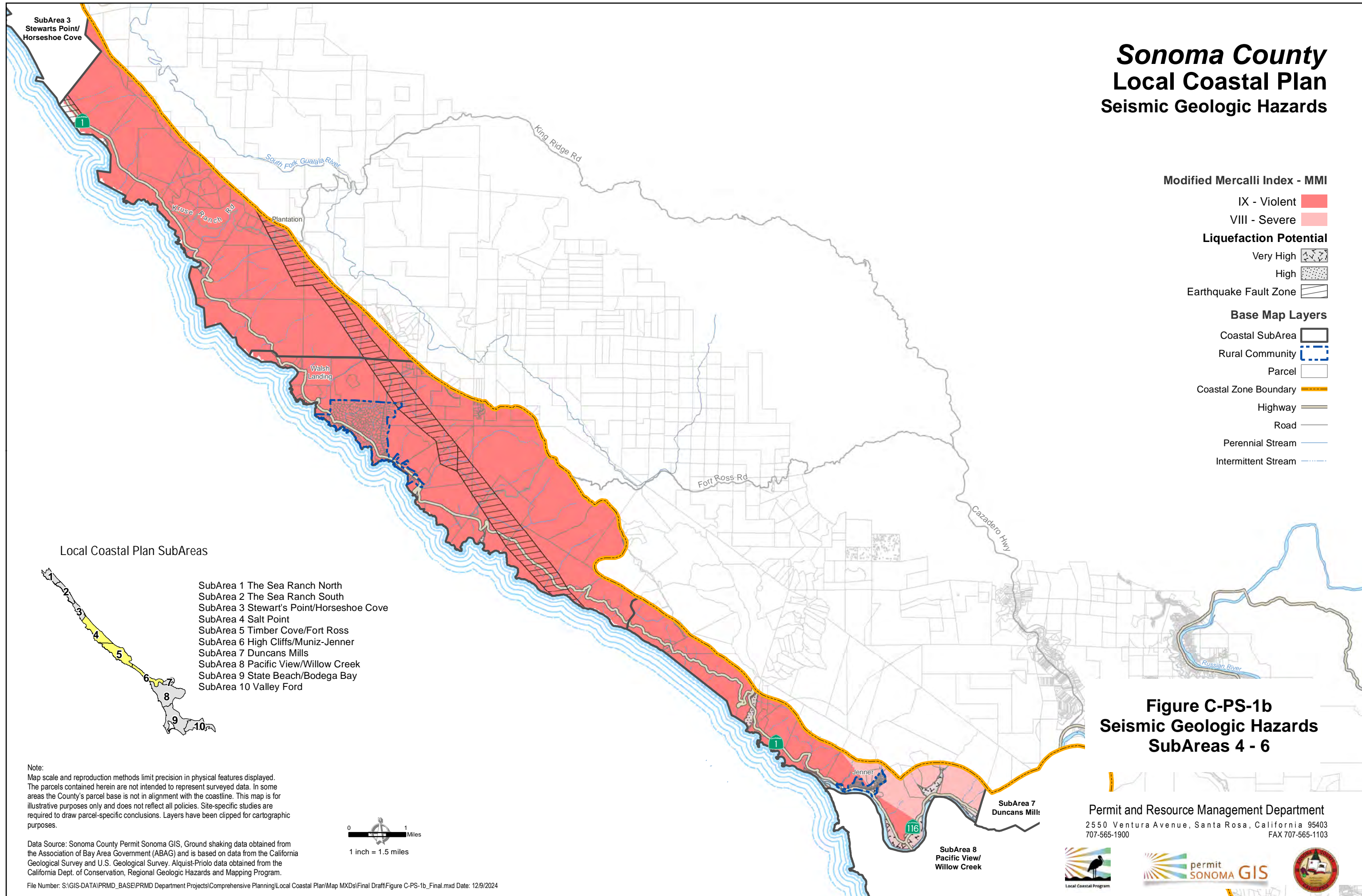
File Number: S:\GIS-DATA\PRMD\_BASE\PRMD Department Projects\Comprehensive Planning\Local Coastal Plan\Map MXDs\Final Draft\Figure C-PS-1a\_Final.mxd Date: 12/9/2024

Permit and Resource Management Department

2550 Ventura Avenue, Santa Rosa, California 95403  
707-565-1900 FAX 707-565-1103



# Sonoma County Local Coastal Plan Seismic Geologic Hazards



**Modified Mercalli Index - MMI**

- IX - Violent ■
- VIII - Severe ■

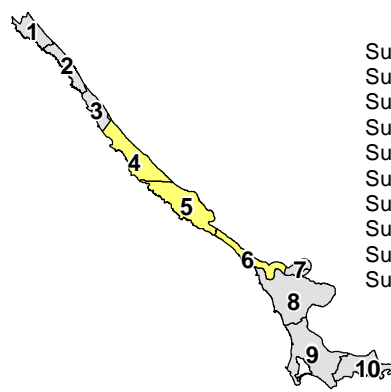
**Liquefaction Potential**

- Very High
- High
- Earthquake Fault Zone

**Base Map Layers**

- Coastal SubArea
- Rural Community
- Parcel
- Coastal Zone Boundary
- Highway
- Road
- Perennial Stream
- Intermittent Stream

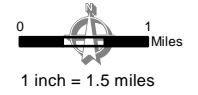
**Local Coastal Plan SubAreas**



- SubArea 1 The Sea Ranch North
- SubArea 2 The Sea Ranch South
- SubArea 3 Stewart's Point/Horseshoe Cove
- SubArea 4 Salt Point
- SubArea 5 Timber Cove/Fort Ross
- SubArea 6 High Cliffs/Muniz-Jenner
- SubArea 7 Duncans Mills
- SubArea 8 Pacific View/Willow Creek
- SubArea 9 State Beach/Bodega Bay
- SubArea 10 Valley Ford

**Figure C-PS-1b  
Seismic Geologic Hazards  
SubAreas 4 - 6**

Note:  
Map scale and reproduction methods limit precision in physical features displayed. The parcels contained herein are not intended to represent surveyed data. In some areas the County's parcel base is not in alignment with the coastline. This map is for illustrative purposes only and does not reflect all policies. Site-specific studies are required to draw parcel-specific conclusions. Layers have been clipped for cartographic purposes.



Data Source: Sonoma County Permit Sonoma GIS, Ground shaking data obtained from the Association of Bay Area Government (ABAG) and is based on data from the California Geological Survey and U.S. Geological Survey. Alquist-Priolo data obtained from the California Dept. of Conservation, Regional Geologic Hazards and Mapping Program.

File Number: S:\GIS-DATA\PRMD\_BASE\PRMD Department Projects\Comprehensive Planning\Local Coastal Plan\Map MXDs\Final Draft\Figure C-PS-1b\_Final.mxd Date: 12/9/2024

Permit and Resource Management Department  
2550 Ventura Avenue, Santa Rosa, California 95403  
707-565-1900 FAX 707-565-1103



# Sonoma County Local Coastal Plan Seismic Geologic Hazards

## Modified Mercalli Index - MMI

IX - Violent

VIII - Severe

## Liquefaction Potential

Very High

High

Earthquake Fault Zone

## Base Map Layers

Coastal SubArea

Rural Community

Urban Service Area

Parcel

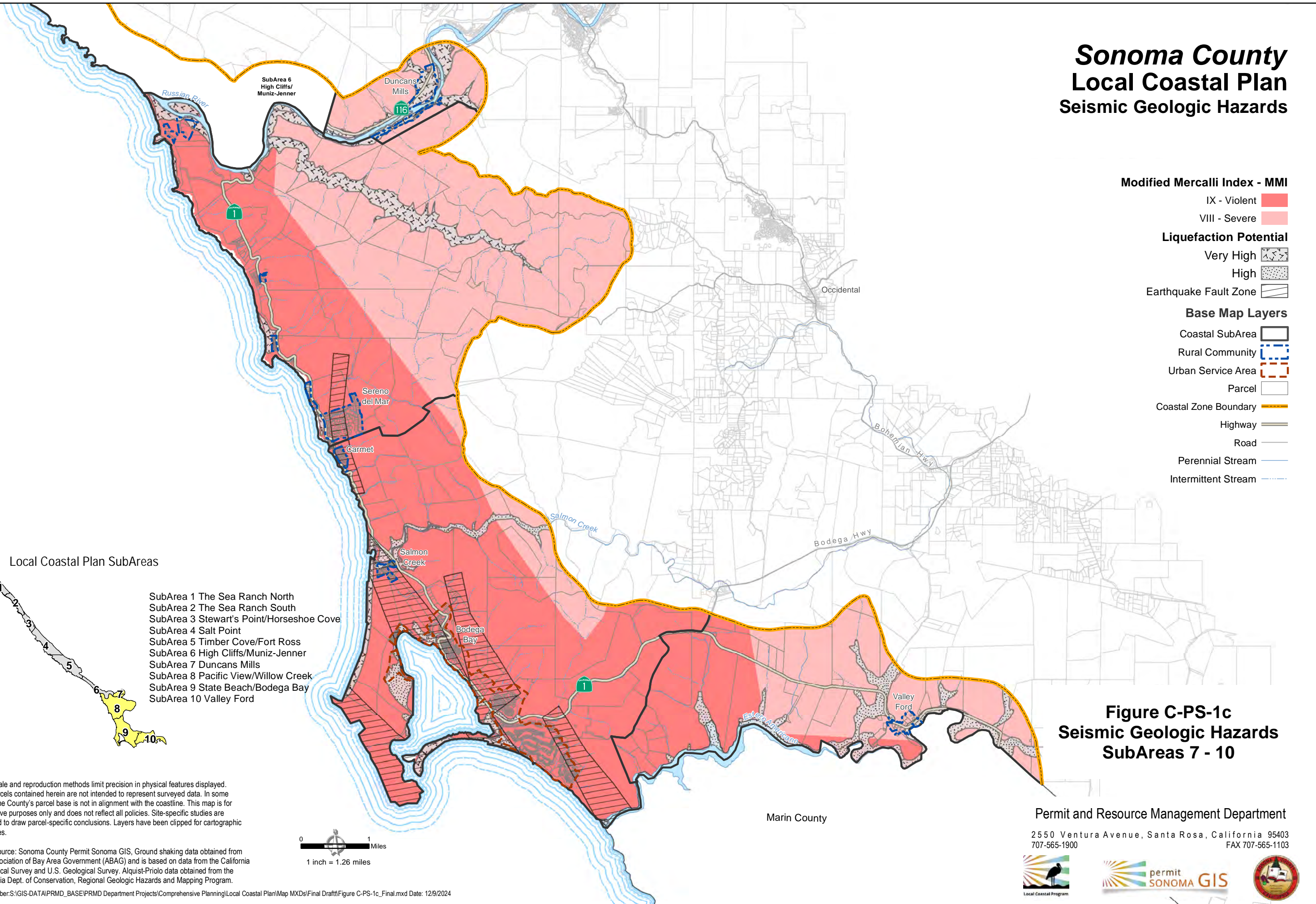
Coastal Zone Boundary

Highway

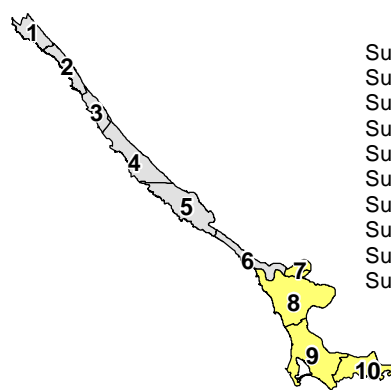
Road

Perennial Stream

Intermittent Stream



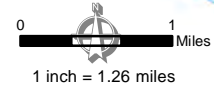
### Local Coastal Plan SubAreas



- SubArea 1 The Sea Ranch North
- SubArea 2 The Sea Ranch South
- SubArea 3 Stewart's Point/Horseshoe Cove
- SubArea 4 Salt Point
- SubArea 5 Timber Cove/Fort Ross
- SubArea 6 High Cliffs/Muniz-Jenner
- SubArea 7 Duncans Mills
- SubArea 8 Pacific View/Willow Creek
- SubArea 9 State Beach/Bodega Bay
- SubArea 10 Valley Ford

**Figure C-PS-1c  
Seismic Geologic Hazards  
SubAreas 7 - 10**

Note:  
Map scale and reproduction methods limit precision in physical features displayed. The parcels contained herein are not intended to represent surveyed data. In some areas the County's parcel base is not in alignment with the coastline. This map is for illustrative purposes only and does not reflect all policies. Site-specific studies are required to draw parcel-specific conclusions. Layers have been clipped for cartographic purposes.



Data Source: Sonoma County Permit Sonoma GIS, Ground shaking data obtained from the Association of Bay Area Government (ABAG) and is based on data from the California Geological Survey and U.S. Geological Survey. Alquist-Priolo data obtained from the California Dept. of Conservation, Regional Geologic Hazards and Mapping Program.

File Number: S:\GIS-DATA\PRMD\_BASE\PRMD Department Projects\Comprehensive Planning\Local Coastal Plan\Map MXDs\Final Draft\Figure C-PS-1c\_Final.mxd Date: 12/9/2024

Marin County

Permit and Resource Management Department

2550 Ventura Avenue, Santa Rosa, California 95403  
707-565-1900 FAX 707-565-1103

