



Strengthening Sonoma County's Homeless System of Care



Update on efforts to date

March 10, 2020

Agenda – Update on Strengthening the Homeless System of Care

- State of Homelessness in Sonoma County in Context
- Addressing Recent Concerns
 - *Review of Board's December 23, 2019 Actions*
 - *Closing of Joe Rodota Trail*
 - *Emergency Shelter - Los Guillicos Villages*
- Shared Housing and Placements and Contract Services
- Indoor-Outdoor Shelter Options
- Interim Homeless Encampment Policy
- Governor's 100 Day Challenge

Homelessness in **California**

- 151,000 Californians experiencing homelessness
- Accounts for almost half of homeless population in the country – 47%

According to the federal 2019 Annual Assessment of Homelessness Report (AHAR)

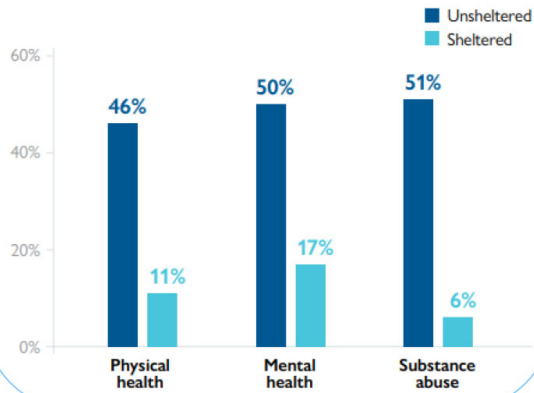
Homelessness in **Sonoma County**

- The 2019 Point-in-Time Count Sonoma County **4th largest homeless population** suburban areas Continuums of Care in U.S.
- In **2019**, Sonoma County had **2,951** people experiencing homelessness – **2% decrease** from 2018.

According to the federal 2019 Annual Assessment of Homelessness Report (AHAR)

Causes of Homelessness

Physical health conditions, mental health conditions, substance abuse-related loss of housing for sheltered and unsheltered adults



- Health
- Behavioral health care needs
- Experiences of abuse and trauma

California Policy Lab, UCLA –Health Conditions Among Unsheltered Adults in the U.S.-October 2019

Impacts on Community Systems

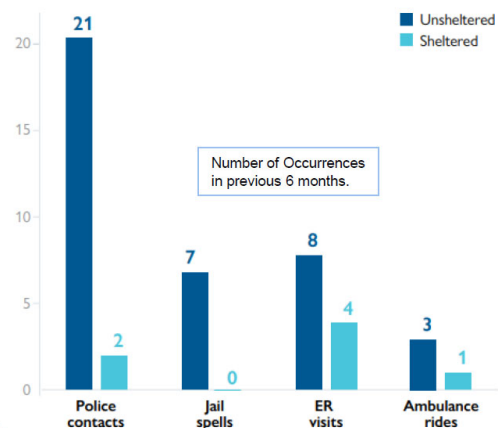
■ Law Enforcement and Criminal Justice System

- *ten times as many police contacts*
- *nine times as likely spent at least one night in jail*

■ Emergency Response and Emergency Room

- *At least one visit to an emergency room*
- *nearly three times as likely to have at least one trip in an ambulance*

Police contacts, jail spells, emergency room visits, and ambulance rides in previous six months by shelter status



California Policy Lab, UCLA –Health Conditions Among Unsheltered Adults in the U.S.-October 2019

UC Berkeley Policy Lab – Sonoma County Policy Brief

Identifies top utilizers of

- Behavioral Health
- Criminal Justice
- Housing and homeless
- Human Services

Will identify

- *Number of services used across programs and systems*
- *Intensity of Service Utilization*
- *Costs of those Services*

Update On Board Directed Actions

- December 17, 2019 Homeless Emergency Declared
- December 23, 2019, Bold Actions Directed
- January 7, 2020, deadline set to clear Joe Rodota Trail
- January 7, 2020, Emergency Shelter Los Guilicos Villages



Crisis on the Joe Rodota Trail (JRT)

- December 17, 2019, the Board declared a County emergency.
- Largest homeless encampment in Sonoma County history (250+ occupants).
- Encampment posed numerous health, environmental, and public safety hazards.
- Addressed public health, sanitation, and security concerns on the trail.



January 31, 2020 – JRT Cleared and Closed

- ACCESS Intensive Care Coordination Team outreach, assessment, and placement into services and supports.
- Cross-jurisdictional effort.
- Trail cleared without incident or arrests.

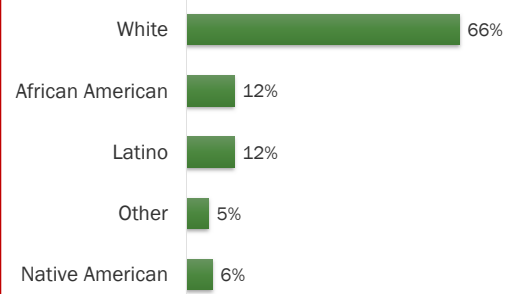
ACCESS Intensive Care Coordination Team JRT Response

December 2019-January 2020:

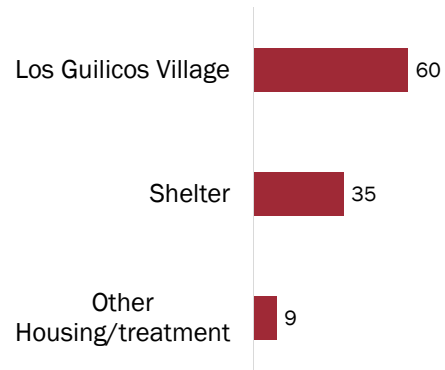
- **258** occupants received 282 consultations from the care team assessing interest in services and housing needs
- **134** occupants enrolled in ACCESS
- **104** occupants were housed and/or connected with residential treatment. 60 other occupants refused housing placements offered to them

Occupant characteristics:

- 57% male
- Median age: 48 years (range 18-77 years)



Housing Placements for Individuals on the JRT – Los Guilicos Village



Update – Emergency Shelter Los Guilicos Village

- 60 huts
 - *56 single occupancy; 4 double*
- Constructed in 11 days.
- The site is operated by St. Vincent de Paul.
- Array of services provided.
- Life changing opportunities.



Update – Emergency Shelter Los Guilicos Village

- 78 residents at Villages
 - 19 exited;
 - 9 did not return
 - 10 exited due to behavioral issues
- 59 currently on site
- Resident Needs
 - Medication support
 - Mental health and detox support
 - Economic/food assistance
 - Clothing
 - Employment training and job assistance

Available Services

Social Services

- Medi-Cal
- Cal-Fresh
- General Assistance
- SSI/SDI
- Workforce Assistance

Health Services

Mental Health Services

- Crisis Services

Substance Use Services

- Detox
- Residential Treatment

Disease Testing

Medical Services

- Primary Care
- Dental

Housing

- Permanent Supportive Housing
- Sheltering Services
- Transitional Housing

Legal Services and Support

- Probation
- Public Defender

Update – Emergency Shelter Los Guilicos Village

■ ACCESS Intensive Care Coordination Team Services

- All residents assigned care manager
- 49 connected to Medi-Cal
- 44 Cal-Fresh
- 13 SSI Applications in Process
- 5 participants have vouchers
- 36 have qualified for vouchers

■ Sonoma Applied Village Services (SAVs)

- Support residents to obtain necessary documentation for eligibility to services

Bold Actions to Strengthen the Homeless System of Care



December 23, 2019 - \$12 Million Investment

- Shared Homes/Master Leasing
- Indoor-Outdoor Shelters
- ACCESS Intensive Care Coordination Team
- Behavioral Health Services & Residential Treatment

Bold Action – Shared Housing and Master Leases

2 homes purchased; 2 homes leased – will house 18-24 individuals

- **Santa Rosa Property** – 3 units with 2 rooms per unit (6-8 residents)
 - *Occupancy for 6 units will occur in late March.*
 - *Occupancy for main home to occur at later date due to needed repairs.*
- **Cotati Property** – 3 units with 2 rooms per unit (6-8 residents).
 - *Occupancy to be determined. Relocation of existing tenants*
 - *Prioritized placement of individuals with serious mental illness.*
- **Pythian Road Properties** - 2 units with 2 rooms (6-8 residents)
 - *Prioritized vulnerable women*

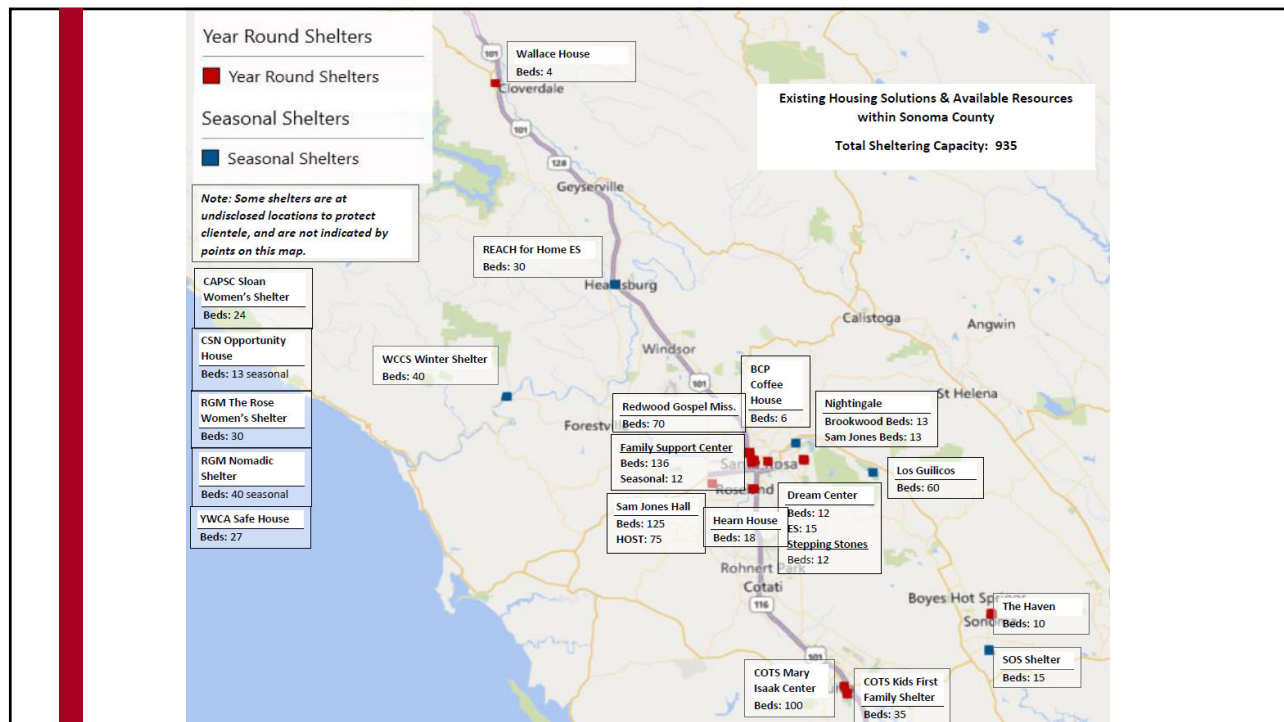
Bold Action – Mental Health and Residential Treatment

- Buckelew Programs – Awarded Contract
- Will provide intensive mental health services to individuals living in shared homes
- Additional staff will be hired by end of March
- 15 Residential treatment beds across the following providers:
Drug Abuse Alternatives Center, Helen Vines & Hilltop

Indoor-Outdoor Shelter Sites

Board direction to expand options for intermediate solutions on the path towards permanent stable housing

- Indoor-Outdoor solutions are not encampments.
- Provide semi-covered, secure environment that is directly linked to indoor shelter, food, facilities, and medical services.
- Combination of on-site structures, RV hook-ups, and safe parking
- Housing for a total of 80 individuals (40 individuals each) with support services and navigation center



Indoor-Outdoor Shelter Update - Request for Qualifications (RFQ)

- RFQ released January 10, 2020; responses due January 27, 2020.
- 3 responses were received by the deadline
- All will be considered for safe parking operations and/or indoor-outdoor shelter operations.
- No proposals included sites. Only operator proposals.
- Board Chair solicited potential sites from other jurisdictions and non-governmental organizations.

Indoor-Outdoor Shelter Update - Site Selection Criteria

Site Selection Criteria	Site Selection Criteria
Size	Walkable site
Accessible for those with mobility issues	Site configuration
Entrance access	Perimeter security
Parking on site	Potential environmental hazards
Proximity to public transportation	Proximity to services
Available utilities	Duration

Assumptions

- Using 100 square foot pallet shelters (not the existing 64 square foot shelters) to meet ADA code.
- Minimum of 1 acre for each site.
- Density of 30 units per acre.
- The Emergency declaration is in place and that Appendix O of the California Building Code applies.
- ADA applies.
- Fire codes apply.

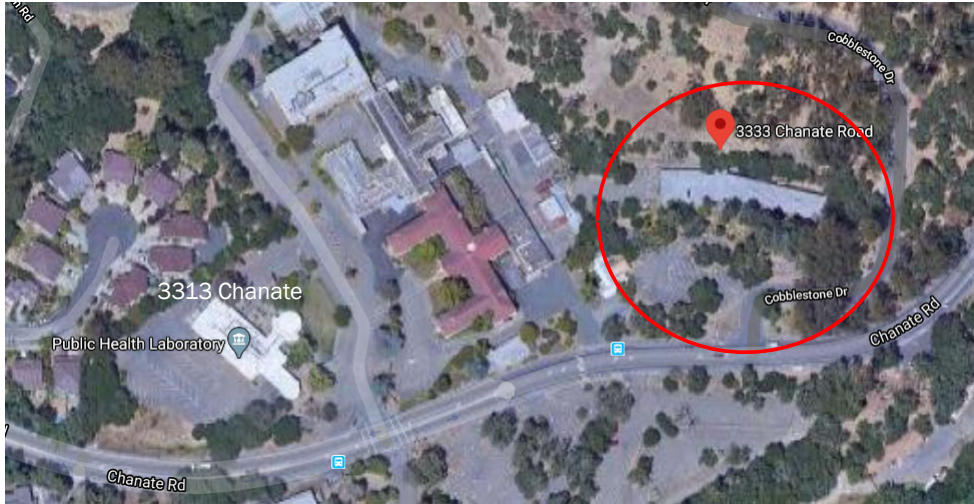
Indoor-Outdoor Shelter Update – Site List

- 3333 Chanate Hall, Santa Rosa
- 3313 Public Health Lab Chanate Rd, Santa Rosa
- County Campus Permit Sonoma Parking lot, Santa Rosa
- S. Aston Barns Fairgrounds, Santa Rosa
- 4040 Santa Rosa Avenue, Santa Rosa
- Cloverdale Rail Depot, Cloverdale

3333 Chanate Hall (1.3 acres) Indoor-Outdoor Shelter – County-Owned Sites

- **Advantages:** size, paved, accessible, use of unoccupied office space for some services
- **Disadvantages:** property scheduled to be sold, residential neighborhood

3333 Chanate Hall (1.3 acres)



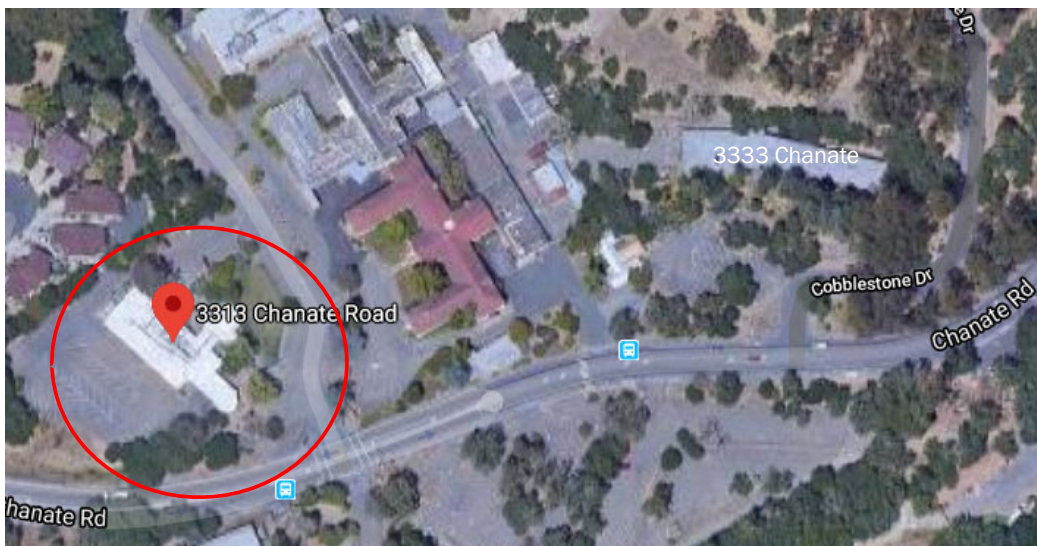
3333 Chanate Hall (1.3 acres)



3313 Chanate Public Health (PH) Lab Indoor-Outdoor Shelter – County-Owned Sites

- **Advantages:** size, paved, accessible, use of unoccupied office space for some services
- **Disadvantages:** incompatible use concerns; interrupting PH lab functions

3313 Chanate PH Lab



3313 Chanate PH Lab



County Campus Permit Sonoma Parking lot (1.8 acres) Indoor-Outdoor Shelter – County-Owned Sites

- **Advantages:** paved, size, accessible
- **Disadvantages:** currently provides 154 parking spaces for Permit Sonoma clients and employee parking, would negatively impact service delivery,

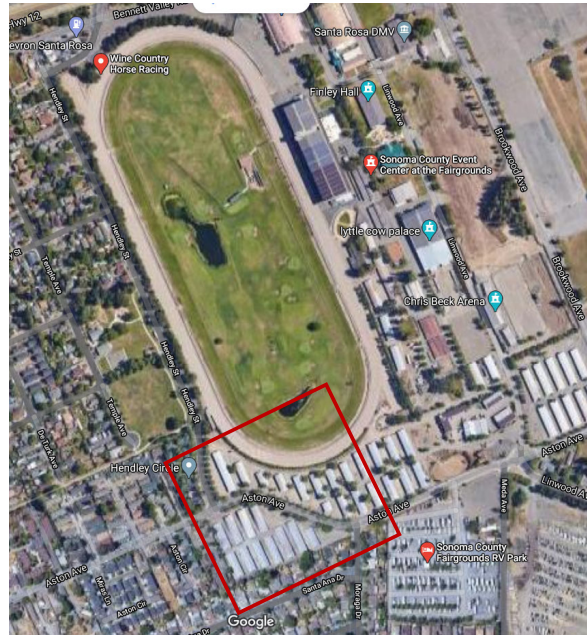
County Campus Permit Sonoma Parking lot (1.8 acres)



S. Aston Barns, Fairgrounds (3.1 acres) Indoor-Outdoor Shelter – County-Owned Sites

- **Advantages:** size, could be a permanent location
- **Disadvantages:** requires demolition of existing barns, restoration of utilities, impact on future fairgrounds development, residential neighborhood.

S. Aston Barns, Fairgrounds (3.1 acres)



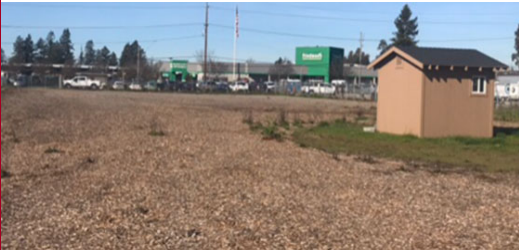
4040 Santa Rosa Avenue (2 acres) Privately Owned or Special District Owned Sites

- Advantages: size, gravel, accessible
- Disadvantages: none noted.

4040 Santa Rosa Avenue (2 acres)



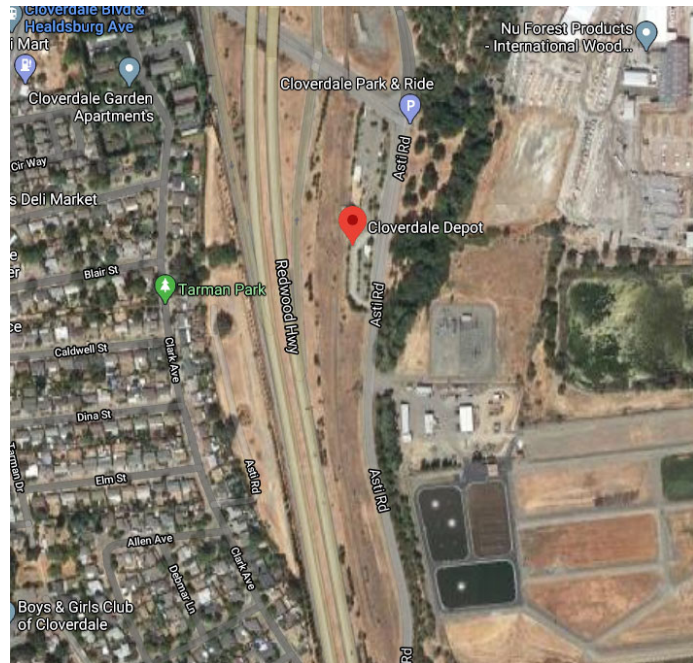
4040 Santa Rosa Avenue (2 acres)



Cloverdale Rail Depot (1 acre) Privately Owned or Special District Owned Sites

- **Advantages:** paved, accessible
- **Disadvantages:** owned by SMART, current bus thoroughfare, residential neighborhood

Cloverdale Rail Depot (1 acre) Privately Owned or Special District Owned Sites



County Interim Encampment Prevention Policy

Goal:

- Interim Policy until Home Sonoma County Leadership Council develops a countywide policy.
- Prevent encampments that create risk to environment, public safety, and public health.
- Outreach to bring the homeless into the housing and safety net service system of care.

Encampment Defined: More than 5 dwellings established by people experiencing homelessness.

County Interim Encampment Prevention Policy - Cont'd

Organizational Infrastructure

- **Executive Encampment Team (EET)** – Leadership – CAO, County Counsel, CDC, DHS, General Services, Transportation and Public Works, Permit Sonoma, law enforcement approves encampment prevention strategies.
- **Operational Encampment Team (OET)** – Coordinates the execution of encampment activities.
- **Homeless Encampment Assistance and Resource Team “HEART”** – ACCESS Intensive Care Coordination Team dedicated to outreach, assessment and offering of services.
- **Closure and Cleanup of Encampment**

County Interim Encampment Prevention Policy - Cont'd

Identification & Reporting Encampments:

- Robust Outreach
- Closure & Cleanup of Encampment
- Community Engagement

Governor's 100-day Homeless Challenge to Local Jurisdictions

- In December 2019, Gov. Newsom announced a 100-day Challenge to cities and counties to take immediate action to fight homelessness.
- DHS and CDC intend to participate in this challenge by applying for funding to fund the creation of two indoor-outdoor shelters.
- Opportunity – to receive technical assistance to assist with developing a sustainable model



Governor Newsom 10 State-owned Trailers

- County notified on February 18 it would receive 10 FEMA trailers from the State to shelter homeless individuals in Sonoma County.
- Sonoma County is one of only seven jurisdictions from five counties to receive the trailers since Gov. Newsom announced their availability last month.
- These surplus emergency trailers can house between four to six individuals per trailer.



Recommended Actions

1. Narrow down the list of potential indoor-outdoor shelter sites to 2 or 3. Staff to further evaluate, including conducting community engagement, and return to the Board on April 7, 2020 for the Board to select a site or sites.
2. Provide direction to staff to assess State sites made available by Executive Order of the Governor of the State of California as potential site to locate indoor-outdoor shelter sites.
3. Accept staff's report on the status of shared housing purchases and placements along with status of contracts for mental health and substance use services.
4. Approve staff's recommended County Interim Homeless Encampment Policy to facilitate outreach and care coordination to homeless individuals residing in encampments on County property in order to help them with their housing, health, and social safety net needs.

Recommended Actions

5. Approve Staff's recommendation to expand the ACCESS Sonoma County Initiative to add a permanent Intensive Care Team to respond to homeless encampments.
6. Adopt a resolution amending the Allocation List for the departments of Health Services and Human Services and the Community Development Commission adding 10.00 full-time limited term equivalent positions effective March 10, 2020.
7. Approve the County's participation in the Governor's 100-day Challenge to take bold action in Sonoma County to address homelessness.



Questions

